

Post-Vac Orientation Guide

Consequences of Genetic Immunization Trials (GIT) - a Guide for the General Practitioner

(Version January 20, 2024)

Based on a workshop on April 14, 2023 in Sigmaringen/Germany with

Dr. med. Wolfgang Wodarg, Prof. Dr. rer. hum. biol. Ulrike Kämmerer, Prof. Dr. med. Arne Burkhardt (†), Dr. med. Christfried Preußler, Dr. med. Anika Schaefer, Dr. med. Stefanie Ullrich-Colaiacomo, Dr. med. Heide von Lüttwitz, Dr. med. Konrad Bäuerle, Dr. med. Cornelia Morche, Dr. med. Hans-Michael Hackenberg

The remarks on the immune system and the immune pathomechanisms in respiratory tract infections are taken from the paper "Gene-based Vaccination — Quo Vadis?" by Dr. Sucharit Bhakdi, Dr. Karina Reiss, and Dr. Michael Palmer, which we were allowed to use by kind permission of the authors.¹

The guide became necessary because the side effects and long-term effects of the novel injections administered more than 190 million times in Germany to prevent Covid-19 infections (till end of March 2023) are ignored or downplayed by the official authorities and especially by the government agencies.

This guide is based on the assessment of the level of knowledge available at the time of the revision. The editorial team strives to constantly update and supplement the guide.

¹ Bhakdi S. et al. (2022) Gene-based Vaccination - Quo Vadis? Global Research

Table of contents

Consequences of Genetic Immunization Trials (GIT) - a Guide for the General Practitioner	1
Preface	5
1 Basics for Vaccinations	7
1.1 Immunity to Respiratory Viruses: Systemic Versus Mucosal Immunity	7
1.2 Role of T-lymphocytes	8
1.3 B-lymphocytes, Antibodies	9
2 Genetic Immunization Trials (GIT)	10
2.1 Definition Post-Vac / Post-GIT	10
2.2 Prevalence of Post-GIT	11
3 Key Lessons Learned from the "Pandemic"	12
4 Pathomechanisms of Genetic Immunization Trials	13
4.1 General Pathomechanisms	15
4.1.1 Danger from Gene-based Immunization Trials	15
4.1.2 Toxic Effects of Lipid Nanoparticles (LNP).	16
4.1.3 Toxic Effect of the Spike Protein	16
4.1.4 Toxic Effect of Antibodies Directed Against Spike Protein	17
4.1.5 Shedding of mRNA, Spike, Lipid Nanoparticles, Exosomes	17
4.1.6 IgG4	18
4.2 Special Pathomechanisms	18
4.2.1 Endothelitis and Lymphocytic Infiltration	18
4.2.2 Myocarditis, Endocarditis, Pericarditis	20
4.2.3 Damage to the ACE2 receptor	21
4.2.4 Misfolding of Proteins, Prion Mechanism, Amyloidosis	21
4.2.5 Psychological Effects	22
4.2.6 Induction of Hepatitis by Vector Vaccines with Adenoviruses as Carriers.	23
4.2.7 Influence on Spermatogenesis with Decrease of Sperm Count	23
4.2.8 Increased Accumulation of mod-mRNA in the Ovaries.	23
4.2.9 Spike-induced immune thrombotic thrombocytopenia (VITT)	24
4.2.10 Loss of Elastic Fibers in the Vessel Walls and in the Skin	24
4.2.11 VAIDS - Vaccine Acquired Immune Deficiency Syndrome	25
4.2.12 Reactivation of Dormant Cancer, Turbo-Cancer	25
4.2.13 Inflammatory diseases of the musculoskeletal system	26
5 Diagnostics for Suspected Post-GIT	26
5.1 Anamnesis	26

5.2 Physical Examination	27
5.3 Laboratory Tests	27
5.3.1 Symptom Related Laboratory Tests	27
5.3.2 Special Laboratory Tests	27
5.3.3 Hormonal Status	28
5.3.4 Infection Diagnostic, Virology, Bacteriology	28
5.3.5 Toxicological Tests	29
5.4 Special Diagnostics	29
5.4.1 Cardiac Examination	29
5.4.2 Neurological Examination	29
5.4.3 Orthopedic Examination	30
5.4.4 Psychiatric Examination	30
5.4.5 Ophthalmological Examination	30
5.4.6 Ear Nose Throat Examination	31
5.4.7 IMPORTANT: Deceased Person with Suspected Harm from the mod-mRNA Injection	31
6 Therapy	31
6.1 Early Stage	32
6.1.1 Degradation of mod-mRNA	32
6.1.2 Removal of Lipid Nanoparticles (LNP)	33
6.1.3 Spike and Thromboembolic Complications	33
6.1.4 Myocarditis, Endocarditis, Pericarditis, Infarction	34
6.1.5 Immuno-stimulation / Immuno-inhibition	34
6.2 Late Stage	35
6.2.1 Symptom-related Therapy	35
6.2.1.1 Endothelial damage	35
6.2.1.2 Disturbance of Microcirculation	36
6.2.1.3 Thromboembolic Complications in the Late Stage	36
6.2.1.4 Neurological Sequelae, Polyneuropathy (PNP)	36
6.2.1.5 Misfolded Proteins, Amyloid	37
6.2.1.6 Myalgic Encephalomyelitis / Chronic Fatigue, ME/CFS	37
6.2.1.7 Musculoskeletal disorders	39
6.2.2 General Therapeutics	39
6.2.2.1 Therapeutics for Strengthening	39
6.2.2.2 Support of the Intestinal Microbiome	40
6.2.2.3 Nutrition	41
6.2.3 Special Therapies	41

6.2.3.1 Immune Apheresis	41
6.2.3.2 Immune Stimulation or Immuno-modulation	41
6.2.3.3 Low-dose Naltrexone (LDN)	42
6.2.3.4 BC007	42
6.2.3.5 Psychotherapy	42
6.3 Medical Care	43
6.3.1 Family Doctor	43
6.3.2 Clinical Care	43
7 Concluding Remarks	43
7.1 Abuse of "Vaccine-injured" / Long-haul COVID sufferers.	44
7.2 What options do we have as physicians to intervene here?	44

Preface

What do we know about the medical processes to which the population has been exposed for a pretended protection against a pandemic? What knowledge-based recommendations are justifiable if further damage shall be prevented and existing suffering reduced? These and other questions are of great concern to many who have experienced with horror the irresponsible violation of essential political, scientific, and medical rules originally designed to protect our health, our freedom and our peaceful coexistence. On April 14, 2023, a multidisciplinary group of physicians therefore met on the invitation of Dr. Hans-Michael Hackenberg, MD to discuss ways, that could help to alleviate the need.

Since the beginning of 2021, billions of people have been coerced to undergo repeated genetic interventions in tissues and organs of their bodies. Modifications, that were until then not permissible for healthy people.

The justification for those genetic immunization trials (GIT) was a long planned fear campaign, supported by politics and the mass media. The threat was said to be a new coronavirus variant. This SARS-CoV-2 had been furnished with dangerous sequences in a gain of function lab in Wuhan. Even though such laboratory weapons are evolutionarily self-limiting in nature, the fear of them was immediately spread with universally enforced and misleading PCR tests. All those who took part in this campaign have made great profit from it. They were able to take advantage of an almost unanimous political support and a lack of professional or journalistic criticism.

As a result of brutal isolation and mistreatment, old and weakened people died in care homes and intensive care units in the spring and fall of 2020, providing the images that were designed to frighten us. We all remember those alarming pictures, staged in Wuhan, Bergamo, New York or Madrid. Most of those victims in 2020 did not die as a result of a new artificial virus. Its blueprint merely existed in silico, serving as a template for an artificial RNA which, when transferred into the cells of those injected, produced dangerous spike proteins. With such genetic interventions, the fearmongers pretended to immunize the population quickly and over and over again.

The politically inflated and media-fueled pandemic panic had served as a pretext for pharmaceutical investors and institutionally corrupted authorities to push aside all previously relevant safety rules for handling new biomedical strategies. The labels "emergency" and "vaccine" are still misused to justify medical sloppiness with names like "Operation WarpSpeed" or "telescoped" approval procedures. Manufacturers and government agencies are taking into account serious damage and fatalities to an unimaginable extent, without so far showing any change of strategy, precaution or regrets.

Even worse, it is becoming apparent that perpetrators in science, medicine, media and politics have made plans to be able to continue and supplement their anti-human projects for as long as possible. Thus the WHO delivered a series of new ICDs as a tool, with which disease patterns such as "Post-Covid" or "Long-Covid" were opened as new business fields for the compliant medical business. According to these new ICDs, "covid" is a disease of any patient who tested positive in a PCR test or who had typical symptoms (?) after contact with someone who had tested positive. Since the test after genetic immunization trials (GIT) is positive in fact more often than in the non-injected, more and more of the diverse and severe GIT side effects are now being accounted for and hidden as post or long covid. Also a large number of medical research moneymakers apparently think they are on the right track here and are constantly developing new business ideas. In doing so, they systematically avoid the obviously necessary differential diagnosis including GIT side effects. They behave like the devil, who avoids the holy water.

This was exactly what we wanted to change, when we met in Sigmaringen. We were especially glad, that someone like Prof. Arne Burkhardt was participating, who had shown with scientifically precise methodology how to distinguish between pathological tissue changes caused by real coronaviruses and the presently much more frequently observed toxic effects of genetically induced artificial spike proteins.

You will find here a synopsis in which – along with eight other physicians – also the medical biologist Prof. Ulrike Kämmerer has participated by zoom.

After numerous further dialogues and international contacts, Hans-Michael Hackenberg MD, assisted by regionally cooperating colleagues, has taken on the task of formulating a manual from our collected research and discussion results, which can also be understood by laypersons. Like any scientifically

developed knowledge, this must not be regarded as a final result, but rather as a status report that awaits contradiction, supplementation and comments on its content, in order to serve as diagnostic and therapeutic guidance for the many affected people and their medical caregivers.

Prof. Dr. Arne Burkhardt will always remain present in our work - despite his death, which was very painful for all of us.

Wolfgang Wodarg

1 Basics for Vaccinations

The administration of an "artificially" attenuated infectious agent is intended to trigger a defensive reaction in a healthy living organism in order to ensure later immunity against the pathogen. This is the basic idea of vaccination. The "ideal" vaccination in some way mimics the natural infection.² However, since introduction of foreign substances into the body is never completely risk-free, a prerequisite for the vaccination process is that the pathogen carries a high risk of morbidity and mortality, i.e. that it is dangerous. Furthermore, vaccination should ensure robust immunological protection against severe disease. Several traditional vaccinations such as smallpox, tetanus, diphtheria and poliomyelitis, met this requirement.

However, the most common viral diseases affect the respiratory tract and the gastrointestinal tract. These diseases are usually not associated with high mortality rates. Viremia with consequential damage to internal organs is also rare.

In addition, due to the ubiquity of these infections, there is a high level of background immunity in the population, which usually refers to entire groups of viruses due to cross-immunities. There is no real need for vaccines against such diseases.

1.1 Immunity to Respiratory Viruses: Systemic Versus Mucosal Immunity

Infection with respiratory viruses primarily challenges the immune barrier of the respiratory mucous membranes. This system is located in and under the mucous membranes of our respiratory tract and works independently of the immune cells that protect our internal organs.

Thus, there is a functional separation between mucosal and systemic immunity. This can be seen, among other, in the type of antibodies produced by plasma cells located directly under the mucous membranes. These antibodies – *secretory immunoglobulin A (sIgA)* – are released via the mucous membranes on their surface. They act directly on site against viruses that can be transmitted through the air (e.g. aerosols). In this way, they can often directly prevent these viruses from binding to the cells in the mucous membranes and infecting them. The same degree of protection also applies to the digestive tract.

In the bloodstream in contrast, *IgG* and *circulating IgA* are the most important antibodies. They cannot prevent viruses from entering cells lining the respiratory tract or intestines. They only can counteract the spread of these viruses after entering the bloodstream.

Vaccines injected into the muscle – i.e. the inside of the body's tissue – only induce *IgG* and *circulating IgA*, but **not** *secretory IgA*. This is crucial. The antibodies induced by such vaccines therefore cannot effectively protect respiratory cells from infection by airborne viruses.³ This finding is neither controversial nor new. Already 30 years ago, McGhee et al.⁴ drew the following conclusion:

"It is surprising that despite our current level of understanding of the common mucosal immune system, almost all current vaccines are given to humans by the parenteral route [i.e. by injection]. Systemic immunization is essentially ineffective for induction of mucosal immune responses. Since the majority of infectious microorganisms are encountered through mucosal surface areas, it is logical to consider the induction of protective antibodies and T cell responses in mucosal tissues."

A Middle East Respiratory Syndrome (MERS) study has confirmed the failure of intramuscular injection to induce secretory IgA.⁵ MERS, like COVID-19, is caused by a coronavirus. The experimental vaccine

² Also in terms of evolutionary mechanisms, that is, genome changes or viral gene insertion into the genome

³ Kurono, Y. (2021) *The mucosal immune system of the upper respiratory tract and recent progress in mucosal vaccines. Auris nasus larynx (preprint)*

⁴ McGhee, J.R. et al. (1992) *The mucosal immune system: from fundamental concepts to vaccine development. Vaccine 10:75-88*

⁵ Kim, M.H. et al. (2019) *Superior immune responses induced by intranasal immunization with recombinant adenovirus-based vaccine expressing full-length spike protein of Middle East respiratory syndrome coronavirus. PLoS One 14:e0220196*

used in the study, like all major vaccines currently used against COVID-19, was gene-based. Another study has also shown that the mod-mRNA COVID vaccines do not stimulate significant production of secretory IgA.⁶ For this simple reason, such injections are not expected to inhibit respiratory infection. In fact, the complete failure of vaccines to prevent SARS-CoV-2 infection is now well documented.^{7,8}

However, secretory IgA antibodies in the mucous membranes of healthy people can only block infections with respiratory viruses to a limited extent. A wall of protective antibodies can only fend off a "small attack", while greater viral load will overcome this barrier. Thus, infections with airborne viruses occur again and again in our life. The use of intranasal vaccines to stimulate sIgA production would not really change this fact, even if it would actually elicit stronger mucosal immune responses than intramuscular injection.^{4,9}

1.2 Role of T-lymphocytes

T-lymphocytes are crucial for controlling respiratory infections and indeed, this extends to viral infections in general. Attention is now turned to these cells, whereby the discussion can initially be focused on the function of cytotoxic T-lymphocytes (CTL).

Whenever a cell produces a specific protein, it will generate multiple copies of it. A few of these copies will be broken down, on purpose, into small fragments (peptides); these are then transported to the surface of the cell, together with a specific carrier molecule named MHC 1 (Major Histocompatibility Complex 1). There, the fragments become amenable for interaction with and recognition by CTL. Different fragments will be recognized by lymphocytes belonging to different "clones"; all cells of a given T-cell clone will carry the same T-cell receptors and recognize the same protein fragments, but cells belonging to different clones will differ in their antigen specificity. A T-cell which does manage to find and bind its cognate protein fragment will thereby be activated to eject deadly toxic substances onto and into the targeted cells.

If the protein whose fragments had attracted and activated those CTL was encoded by a virus, then the result will be the destruction of the virus-infected cell, which is useful and necessary for eradicating a viral infection. However, note that the process of protein fragmentation and presentation is completely general – it is not limited to viral or other "non-self" proteins, but rather applies to the body's own "self" proteins as well. It is therefore vital to prevent the activation of CTL that recognize these "self" protein-derived fragments. How is this accomplished?

Envisage the interaction between presented protein fragment and its "receptor" on the T-cell as one between lock and key. There are myriad different keys (fragments) fitting into myriad different locks (T-cell receptors). It is known that the truly incredible diversity of locks arises already during fetal development. How does this happen? Are locks molded in response to the fragments (keys) as these appear during development? Then, since the fetus is not usually exposed to any viral infections, CTL would be equipped with receptors exclusively recognizing "self" protein fragments; but these self-reactive CTL clones could hardly serve a useful purpose. If, on the other hand, the diversity of locks should arise haphazardly and by chance, without requirement for any instructing template (key), then billions of lymphocytes that recognize "non-self" – extraneous agents, including virus proteins – should be generated alongside those that recognize "self."

⁶ Meyer-Arndt, L. et al. (2022) *Cutting Edge: Serum but Not Mucosal Antibody Responses Are Associated with Pre-Existing SARS-CoV-2 Spike Cross-Reactive CD4+T Cells following BNT162b2 Vaccination in the Elderly*. *Immunol.* 208:1001-1005

⁷ Chau, N.V.V. et al. (2021) *Transmission of SARS-CoV-2 Delta Variant Among Vaccinated Healthcare Workers, Vietnam*

⁸ Singanayagam, A. et al. (2021) *Community transmission and viral load kinetics of the SARS-CoV-2 delta (B.1.617.2) variant in vaccinated and unvaccinated individuals in the UK: a prospective, longitudinal, cohort study*. *Lancet Infect. Dis.* (preprint)

⁹ Du, L. et al. (2008) *Intranasal vaccination of recombinant adeno-associated virus encoding receptor-binding domain of severe acute respiratory syndrome coronavirus (SARS-CoV) spike protein induces strong mucosal immune responses and provides long-term protection against SARS-CoV infection*. *Immunol.* 180:948-56

Intriguingly, the latter is today known to be the case.¹⁰ Wondrously, lymphocytes recognizing “self” are silenced or held in check throughout life, preventing them from attacking healthy body cells. Mishaps occasionally occur that can lead to autoimmune disease. Come T-cells out of cover that are reactive against liver proteins, come autoimmune hepatitis. Come T-cells out of cover that are reactive against the pancreatic islets, come autoimmune diabetes.

But on the other hand, immune cells reactive against essentially all non-self proteins and present at birth are ready to act whenever a challenge is issued. It is for this very reason that conventional vaccinations can successfully be performed already in early infancy. And when a Coronavirus comes around, up rises the anti-Corona CTL team. When flu comes around, up rises the anti-flu team, etc. Each bout of training strengthens the team, enabling the opponent to be more rapidly constrained and infections terminated with increasing effectiveness.

But is such acquired immunity not voided and evaded by ever new virus “variants of concern”? Not so. Here, one must note that a protein will generate many fragments that are recognized by many different CTL clones. The proteins encoded by a virus mutant may generate one or a few differing fragments, but the majority of other fragments will remain the same. For this reason, CTL-based cross-reactivity and cross-protection exists between all members of a given virus family. In connection with COVID-19 specifically, it has been noted that previously infected persons may indeed sometimes contract another infection with a new variant, but such reinfections are almost never serious.^{11,12} This is just as we should have expected; the narrative that emergence of virus mutations must be countered by development of customized vaccines has thus been fundamentally flawed right from the start.

1.3 B-lymphocytes, Antibodies

The activation of T lymphocytes – but in this case of T helper cells and not of CTL – is also coupled with the activation of B lymphocytes. Specialized antigen-presenting cells, dendritic cells, macrophages, take up antigens, fragment them and present the fragments with the help of Major Histocompatibility Complex 2 (MHC2). These MHC2 molecules selectively interact with T helper cells and activate special B lymphocytes, the plasma cells for antibody production.

A newly activated plasma cell initially produces a specific class of antibodies called immunoglobulin M (IgM). After a few weeks, however, another class of antibodies predominates, usually IgG or IgA. This **antibody class change** can be evaluated diagnostically: If mainly IgM-Antibodies are detected, the reaction that takes place must be “new”. If primarily IgG or IgA-Antibodies are present, the reaction has been going on for some time, and it may also be a secondary or memory reaction to an antigen with which the immune system had already come into contact before.

The natural infection causes the production of antibodies against various surface antigens (epitopes) of the virus, whereas the modified vaccine mRNA is only targeted at one epitope, the spike. Many people therefore have cross-reactive antibodies (IgG) against SARS-CoV-2 due to previous contact with a virus from the SARS family and for this reason also usually show only mild courses of the disease.¹³

While the CTLs recognize fragments of proteins presented on the cell surface, antibodies bind to the intact proteins (epitopes) themselves. Bound antibodies then cause the activation of another important arm of the immune system, the complement system. Complement activation triggers a variety of inflammatory events. In addition, the complement system itself attacks the cell, on the surface of which

¹⁰ Rechavi, E., Somech, R. (2017) Survival of the fetus: fetal B and T cell receptor repertoire development. *Immunopathol.* 39:577-583

¹¹ Dhar, M.S. et al. (2021) Genomic characterization and epidemiology of an emerging SARS-CoV-2 variant in Delhi, India. *Science* 374:995-999

¹² Altarawneh, H. et al. (2022) Protection afforded by prior infection against SARS-CoV-2 reinfection with the Omicron variant. *medRxiv* (preprint)

¹³ M. Dugas et al. (2021) Less severe course of COVID-19 is associated with elevated levels of antibodies against seasonal human coronaviruses OC43 and HKU1 (HCoV OC43, HCoV HKU1). *Int. J. Infect. Dis.* 105, 304–306. pmid: 33636357.

activation occurs, leading to its destruction.¹⁴

Antibodies play a crucial role in secondary infections and in viruses that can evade the action of cytotoxic T cells.

Cytotoxic T cells are effective in primary infections and in viruses that induce antibody-dependent enhancement (ADE).

ADE: If an antibody-bound virus particle is ingested by a cell, it may not be destroyed. Instead, it multiplies in this immune cell. In this case, the antibodies promote the replication of the virus and aggravate the disease up to a cytokine storm, e.g. in *Dengue fever*, but it can also occur with SARS-CoV-2.

2 Genetic Immunization Trials (GIT)

The immunization trials against SARS-CoV-2 are not carried out with common antigens. Rather, nucleic acids are introduced into human cells by lipid nanoparticles or transgenic vectors. The mRNA particles contained therein, artificially stabilized with methyl pseudouridine (modified mRNA, mod-mRNA)¹⁵, do not themselves trigger an immune reaction. They only contain the nucleic acid blueprint for a protein, but not the antigen-acting spike proteins. Therefore, these particles are absorbed by our cells regardless of existing immunity. They are virtually invisible to our immune system. In the cells, they induce protein production and only after spike production has occurred, the immune system reacts, classifying the entire cell as foreign and begins to destroy it.

Compared to previous vaccinations, the genetic immunization trials for the prevention of COVID-19 were largely bypassing necessary tests for efficacy and side effects and use experimental new technologies. However, similar experiments had already led to dangerous side effects in previous animal studies.

In fact, mRNA injection is not a vaccination, but a genetic intervention with the introduction of artificially modified nucleic acids into human cells. Neither the route of infection nor the type of antigen contacts bear any resemblance to a natural viral infection. For this reason, such interventions are questionable and highly risky.

Normal vaccines have development times of 8 to 10 years. In contrast, RNA-containing injections were developed in a greatly shortened rush procedure. In 2020, the legislator repealed many of the long-standing laws and regulations on drug safety for these substances and, for example, issued in Germany the MedBVS¹⁶. In this way, measures for quality assurance, liability rules, labeling requirements and shelf life periods could be circumvented. These processes are unique in Europe.

2.1 Definition Post-Vac / Post-GIT

The term "Post-Vac" refers to non-specific secondary diseases that have been observed in temporal relation to a genetic immunization trial (GIT). Unlike traditional vaccinations, significantly more people developed a wide range of diseases immediately or some time later after the mRNA injections, some of which were fatal. Common symptoms include chronic fatigue syndrome, diffuse pain syndromes, neurological dysfunction, autoimmune reactions, thrombosis and heart problems, especially myocarditis, endocarditis or pericarditis. In some cases, the symptoms are similar to those of so-called

¹⁴ M. Palmer et al. (2023) mRNA Vaccine Toxicity D4CE.org, <https://doctors4covidethics.org/wp-content/uploads/2023/08/mRNA-toxicity-August15b.pdf>

¹⁵ Karikó, K. et al. (2008) Incorporation of pseudouridine into mRNA yields superior nonimmunogenic vector with increased translational capacity and biological stability. *Mol. Ther.* 16 (2008), 1833-40. pmid: 18797453. doi: 10.1038/mt.2008.200

¹⁶ <https://www.gesetze-im-internet.de/medbvsv/>

Long-haul COVID¹⁷ or Post-COVID¹⁸.

The commonly used term "Post-Vac" in connection with the gene injection is also used here, but is inappropriate because this is not a vaccination. Rather, it is a matter of genetic interventions in the classical sense, applied for the first time to predominantly healthy people, which have been recommended and in some cases ordered by the health authorities. Preclinical studies were largely absent, and the extensive safety measures otherwise required for comparable gene therapy interventions were circumvented. This had been made legally possible by misleadingly labeling the introduction of nucleic acids into human cells for the prevention of infectious diseases as an exception as early as 2009 as a "vaccination".¹⁹ We avoid this trivializing equation between the introduction of nucleic acids and conventional vaccination procedures and therefore prefer to use the terms "Post-GIT or Post-GIT syndrome" or "harm caused by mod-mRNA injection".

Assessment errors due to obscuring determination of immunization status

Effects of mod-mRNA injections that occur within the first two weeks after administration are generally not attributed to the injection.²⁰ Thus, acute reactions such as anaphylaxis, but also myocarditis, cardiac arrhythmias, thrombosis, stroke, even fatal outcomes of such complications, are simply omitted. The rate of severe side effects, which often occur in the first few weeks after the injections, is therefore statistically incorrectly assigned. Such acute illnesses are incorrectly counted as cases of illness in unvaccinated²¹, although recent studies have shown that fatal side effects often occurred within the first two weeks.²²

In addition, in our health care system, long-term effects that occur later after the mod-mRNA injection but are related in time are only reported in some cases, because the reporting process to the Paul Ehrlich Institute is time-consuming and the doctors are not rewarded according to the time spent.

2.2 Prevalence of Post-GIT

By April 2023, the Paul-Ehrlich-Institut had recorded 54,879 suspected cases of serious side effects of the mod-mRNA injections in the sense of Post-Vac or Post-GIT. In the Long-haul COVID Outpatient Clinic in Marburg, the symptoms that occur in this way are defined as Post-COVID after vaccination.²³ This definition is factually incorrect even if the symptomatology is similar. "Long-haul COVID" or "Post-COVID" would be the result of a viral infection, whereas Post-Vac or "Post-GIT" would be the result of a mod-mRNA injection.

While spike proteins in SARS-CoV-2 infection act primarily in connection with whole viruses, i.e. primarily in the respiratory tract²⁴, in Post-GIT syndrome the complete spike protein is the result of the body's own production induced in the body's cells. This spike protein leads to different pathomechanisms than the natural virus spike protein, especially it refers to all accessible body cells. See [Chapter 4](#).

Therefore, the subsequent courses of the disease are also different entities, which presumably also need to be treated differently. Due to this differentiation, Long-haul or Post-COVID without GIT in contrast to symptomatology after GIT, prospective studies are to be promoted.

¹⁷ *Complaints last longer than 4 weeks; USA: longer than 12 weeks, thus corresponding to our post COVID*

¹⁸ *Impairments last longer than 12 weeks*

¹⁹ *Federal Law Gazette (2009), Part I No. 43, published on 22.07.2009, page 1991*

²⁰ *COVID-19-Protective Measures-Exception Ordinance - SchAusnahmV §2, Paragraph 3a*

²¹ *Fenton, N, Neil, M (2022) Flawed covid definitions, data and modeling, <https://wherearethenumbers.substack.com/p/flawed-covid-definitions-data-and>.*

²² *Hulscher, N. et al. (2023) A Systematic Review of Autopsy Findings in Deaths after COVID-19 Vaccination (preprint, withdrawn); https://web.archive.org/web/20230706021406/https://papers.ssrn.com/sol3/papers.cfm?abstract_id=4496137*

²³ *Interview with the head of the outpatient clinic, published on 18.01.2023, <https://www.rechtsdepesche.de/post-vac-ist-wie-long-covid/>*

²⁴ *although the cleaveable S1 subunit is likely to cause its own problems both in the hippocampus and at the ACE2 receptors*

In the meantime, the sequences of SARS-CoV-2, originally described in Wuhan, have been analyzed in more detail and clearly show high-risk coding that does not occur in nature, i.e. that it is produced by genetic manipulation (Gain of Function – GoF, bioweapons research):

- The mod mRNA used for mass application was based on the Wuhan sequences
- Prion-like sequences have been identified by several authors, which can lead to protein misfolding and thus to pathogenic protein deposits, for example, in the brain, other nervous tissues, and the heart.²⁵
- The SARS-CoV-2 virus contains a furin cleavage site for which a patent exists and whose natural origin is very unlikely. The consequence of the furin cleavage site is increased infectivity.²⁶
- In addition, a sequence was detected that is otherwise used by HIV pathogens to enter the T lymphocytes.²⁷
- In the mod-mRNA derived from the original sequence, two proline mutations are found, which lead to a stabilization of the prefusion state.^{28,29}
- The genetic modification of the mRNA used for the injections by means of methyl-pseudo-uridine prevents their rapid degradation by intracellular enzymes and thus significantly prolongs the spike protein synthesis in the infected cells (hence: modified mRNA, mod-mRNA).
- In human liver cells, the incorporation (transcription) of mod-mRNA into the genetic material (DNA) was observed in vitro.³⁰

The actual numbers of people affected by Post-Vac or Post-GIT are likely to be significantly higher than those reported in the media. Critical authors assume an order of magnitude of up to 10% of the number of people treated with mod-mRNA.

3 Key Lessons Learned from the "Pandemic"

The initial justification for mod-mRNA injection was based on the claim that SARS-CoV-2 was a completely new virus against which we humans had no defense mechanisms. However, it is disputed what spread the GoF-mutated Wuhan variant had, whose dangerously modified spike protein served the drug companies as an antigen model for SARS-CoV-2 prevention.

Viruses modified for pathogenicity in this way in the laboratory have little chance of becoming evolutionary in the wild, but limit themselves again and again during outbreaks by eliminating their hosts. In addition, it was assumed that, as a result of the β -Coronavirus infections that have been occurring sporadically during the cold season for many years, cross-immunity must have been present, which was ultimately confirmed.

The non-specific PCR tests for β -Coronaviruses, which are also used en masse in the healthy population and are inconclusive in terms of infection, disease or even contagiousness, had to lead to masses of false positive values and thus to an overestimation of an epidemic event due to their predominantly low prevalence.

When no spread of acute respiratory diseases could be detected during the mass testing, it was propagated that SARS-CoV-2 was a virus that caused vascular diseases. At the same time, in 2020 / 2021, in particular elderly people became victims of stressful therapy attempts with drugs such as

²⁵ Perez, J.-C., Moret-Chalmin, C., Montagnier, L. (2023) Towards the emergence of a new form of the neurodegenerative Creutzfeldt- Jakob disease: Twenty six cases of CJD declared a few days after a COVID-19 "vaccine" Jab " doi: 10.5281/zenodo.7540331

²⁶ Follis KE et al. (2006) Furin cleavage of the SARS coronavirus spike glycoprotein enhances cell-cell fusion but does not affect virion entry. doi: 10.1016/j.virol.2006.02.003. epub 2006 Mar 7. PMID: 16519916; PMCID: PMC7111780.

²⁷ Perez, J.-C., Montagnier, L. (2020) HIV MAN-MANIPULATED CORONAVIRUS GENOME EVOLUTION TRENDS. DOI: 10.5281/zenodo.3975589

²⁸ https://ec.europa.eu/health/documents/community-register/2021/20210106150833/anx_150833_de.pdf

²⁹ Ching-Lin, H. et al. (2020) Structure-based design of prefusion-stabilized SARS-CoV-2 spikes, doi: 10.1101/2020.05.30.125484. Preprint

³⁰ Zhang, L. et al. (2021) Reverse-transcribed SARS-CoV-2 RNA can integrate into the genome of cultured human cells and can be expressed in patient-derived tissues, doi: 10.1073/pnas.2105968118

remdesivir, overdosed hydroxychloroquine and non-indicated intensive care and mechanical ventilation.

With the help of media fear and panic campaigns, a life-threatening disease scenario was created, which in turn served as a justification for nonsensical hygiene measures, lockdowns and the allegedly necessary, widespread use of genetic engineering drugs.

The majority of the population followed this fear propaganda, and a large part of the medical profession in practices and clinics also participated, encouraged by financial incentives.

It became increasingly clear to the public that a corona infection with the pathogens, which had changed several times in the meantime, did not correspond to the propagated danger. However, various serious or long-lasting health disorders were always attributed to a SARS-CoV-2 infection when a PCR test was positive, or when someone with flu symptoms had contact with a PCR test-positive person.

Special ICD codes for COVID-19 have been created by the WHO. Since then, the diagnoses "Long-haul COVID" or "Post-Covid" or "Multi-system Inflammatory Syndrome" listed have been billed in Germany for corresponding billing figures and lump sums per case. These are extremely vague diagnoses that leave a lot of subjective room for attributions.

In SARS-CoV-2 viremia, the toxic reactions are mainly due to the spike protein of the virus. These are exactly those parts of the viruses that are to be presented by cells in the body after mod-mRNA injection. Therefore, a differential diagnostic clarification of these two sources of disease is absolutely necessary. This differentiation is also essential for further diagnostics, for counselling and for possible therapeutic measures, if necessary also for legal claims for compensation. Currently, differentiation is possible primarily by histological detection of spike by immuno-histochemical methods and simultaneous determination of virus capsid antigen in biopsy material or post mortem or by detection of spike and / or virus capsid antigen in the blood. Some laboratories offer appropriate serum / plasma tests, and cytological tests may also be suitable for this purpose.

4 Pathomechanisms of Genetic Immunization Trials

Information from BioNTech:

After administration by intramuscular injection, the BNT162b2 mRNA enters the cytosol of the cells without penetrating the nucleus or integrating into the host genome. In the cytosol, the BNT162b2 mRNA is translated from ribosomes into the non-infectious spike protein. The intracellular spike protein is processed by the host's proteasome and taken up by the molecules of the main histocompatibility complex (MHC) I and MHC II. These migrate to the cell membrane and present the processed spike protein to the immune system. This triggers a specific, T-cell-mediated immune response that targets the virus and the infected cells.

The preferred location (of the injection) is the deltoid muscle of the upper arm. ...The vaccine must not be injected intravascularly, subcutaneously or intradermally.

Proponents of gene-based vaccines assume that the active ingredients merely mimic what happens in actual viral infections. It is claimed that the expression of the foreign protein is short-lived and is mainly limited to the site of the intramuscular injection. Cell damage is also limited and serious side effects are therefore not to be expected. This view is incorrect.

The claim that LNP-packaged mod-mRNA remains at the injection site is now commonly known as an obvious falsehood. These "vaccines" spread rapidly from the injection site through the lymph nodes and into the bloodstream.³¹

Long-lasting expression in organs and tissues at a distance from the injection site has been repeated

³¹ Anonymous (2020) SARS-CoV-2 mRNA Vaccine (BNT162, PF-07302048) 2.6.4 Summary statement of the pharmacokinetic study [English translation].

documented using a number of analytical techniques.^{32,33,34} Since the "vaccine particles" can penetrate all nucleated cells, their uptake inevitably occurs rapidly in cells of the lymph nodes, in endothelial cells lining the walls of blood vessels or the heart, and in cells of any tissue they reach, including cells of the central nervous system, as the encapsulated mod-mRNA passes the blood-brain barrier. This fact distinguishes the "mRNA vaccination" from naturally occurring infections. Very few infectious agents systematically target lymphocytes or endothelial cells. The latter include dangerous viruses that cause hemorrhagic fever and also bacteria that cause life-threatening infections, such as typhoid fever and Rocky Mountain spotted fever.

According to BioNTech, distribution was observed primarily in the liver, adrenal glands, spleen, and ovaries within 48 hours of injection of the mod-mRNA, with the highest concentrations occurring 8 - 48 hours after administration. However, the mod-mRNA in lymph node germinal centers could still be detected 60 days after the injection. According to the latest findings, there is also a distribution via exosomes formed in the cells.³⁵

The mod-mRNA vaccine particles trigger self-destructive processes in the lymphatic organs and in the blood vessels throughout the body. The immense dangers of self-attacks within the immunological control network have been demonstrated.³⁶ These include reactivation of dormant infections (e.g., herpes simplex, shingles, EBV, CMV, borreliosis, tuberculosis, parasites – [VAIDS 4.2.10](#)), reduced ability to control new infections, and activation or reactivation of neoplasms.³⁷ See also [4.2.11](#)

At the same time, a concerted immune attack against the vascular walls is carried out whenever and wherever the endothelial cells are transfected. In the case of SARS-CoV-2, spike protein-specific cytotoxic T cells are known to be widely distributed in the blood of healthy individuals. This may be due to previous infection with this virus, but alternatively to immunological cross-reactivity with other, related Coronaviruses.^{38,39}

With the appearance of specific antibodies, the attack on cells carrying the foreign proteins is multiplied and amplified by the action of complement and phagocytes. Endothelial damage leads to the formation of blood clots and corresponding circulatory disorders. In the central nervous system and in the heart, ischemic cell death has irreversible consequences.

³² Bansal, S. et al. (2021) *Cutting Edge: Circulating Exosomes with COVID Spike Protein Are Induced by BNT162b2 (Pfizer-BioNTech) Vaccination prior to Development of Antibodies: A Novel Mechanism for Immune Activation by mRNA Vaccines.* *Immunol.* 207:2405-2410

³³ Röltgen, K. et al. (2022) *Immune imprinting, breadth of variant recognition and germinal center response in human SARS-CoV-2 infection and vaccination.* *Cell (preprint)*

³⁴ Yamamoto, M. et al. (2022) *Persistent varicella zoster virus infection following mRNA COVID-19 vaccination was associated with the presence of encoded spike protein in the lesion.* *Cutan. Immunol. Allergy (preprint)*

³⁵ Sennef, S, et al. (2022) *Innate immune suppression by SARS-CoV-2 mRNA vaccinations: the role of G-quadruplexes, exosomes, and MicroRNAs, (see Chapter 7 Exosomes and MicroRNAs therein).* [doi: 10.1016/j.fct.2022.113008](https://doi.org/10.1016/j.fct.2022.113008)

³⁶ Anonymous (2021) *Shots and Shingles: What Do They Tell Us?*

³⁷ Krüger, U. (2022) *COVID vaccination and turbo cancer: pathological evidence.*

³⁸ Grifoni, A. et al. (2020) *Targets of T Cell Responses to SARS-CoV-2 Coronavirus in Humans with COVID-19 Disease and Unexposed Individuals.* *Cell* 181:1489-1501.e15

³⁹ Nelde, A. et al. (2020) *SARS-CoV-2-derived peptides define heterologous and COVID-19-induced T cell recognition.* *Nature Immunology (preprint)*

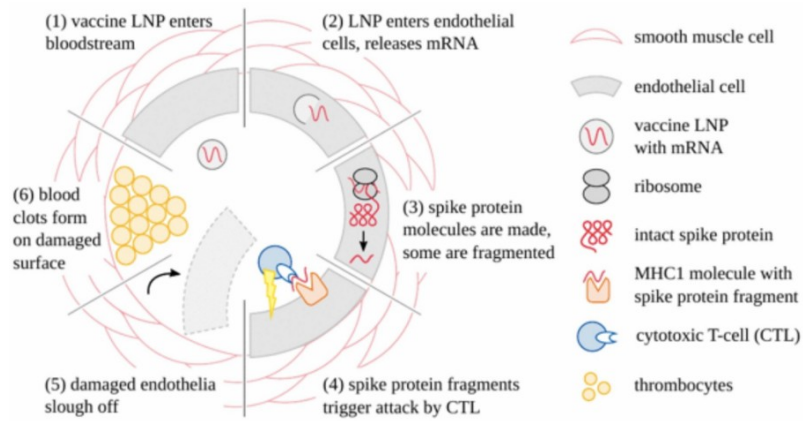


Figure 1: How COVID-19 mRNA vaccines damage blood vessels and cause clotting. After the vaccine lipid nanoparticles have entered the circulation, they are taken up by the endothelial cells, and the mRNA is released. The spike protein is then expressed; some molecules are fragmented and presented on the cell surface by a special carrier protein (MHC1). This causes the endothelial cells to be attacked by cytotoxic T-cells. Destroyed endothelial cells slough off, facilitating leakage of vaccine particles into the adjacent tissues. This also exposes the deeper layers of the vessel wall to the blood, which triggers thrombocyte aggregation and blood clotting.⁴⁰

According to the manufacturers, the mod-mRNA should preferably be administered in the deltoid muscle. In case of improper administration, for example, if the substance is accidentally injected intravascularly, which can easily happen without aspiration, the mod-mRNA is rapidly distributed directly through the blood in the body. This is a particular risk in muscular athletic young people. It is estimated that up to 5% of intramuscular injections may end up intravascularly. This may account for many of the sudden cases of cardiac arrhythmias due to endocarditis / myocarditis up to fatal outcomes (“Died suddenly”).^{41,42}

4.1 General Pathomechanisms

4.1.1 Danger from Gene-based Immunization Trials

The production of foreign antigens by our own body cells inevitably provokes inflammatory and cell-destroying processes. In the case of viral infections, this makes sense, as it leads to the elimination of infected cells. Most viruses target a limited range of tissues due to their receptor specificity, and most tissues can regenerate, allowing wounds to heal subsequently. The LNP-coated mod-mRNA, on the other hand, can be taken up in all presenting cells, as already mentioned.

A majority of people treated with mod-mRNA do not appear to get sick directly from the injection. This may be due to the composition of the injection solution of individual batches. Analyses of the ingredients by various working groups confirm this.⁴³

Incompatibilities or side effects could be due to genetic polymorphisms. The injection technique, cannula length and preparation of the so called “vaccine” could also play a role in tolerability. However, several studies suggest that only 4 - 5 % of all batches are responsible for 70 - 80 % of severe side effects, i.e. that the side effects are primarily caused by the varying ingredients of the individual batches.⁴⁴

It is now known from in vitro studies that mod-mRNA can be transcribed into DNA and even

⁴⁰ Bhakdi S. et al. (2022) Gene-based Vaccination - Quo Vadis? *Global Research*

⁴¹ <https://airtable.com/shrbaT4x8LG8EbvVG/tbl7xKsSUIOPa7Mx>

⁴² <https://goodsciencing.com/covid/athletes-suffer-cardiac-arrest-die-after-covid-shot/>

⁴³ Schmeling, M. et al. (2023) Batch-dependent safety of the BNT162b2 mRNA COVID-19 vaccine. doi: 10.1111/eci.13998

⁴⁴ How Bad is My Batch, <https://knollfrank.github.io/HowBadIsMyBatch/HowBadIsMyBatch.html>

incorporated into the cell genome.⁴⁵ Studies in spring 2023 also showed that mod-mRNA batches contained varying amounts of DNA contamination in the form of plasmids. The plasmids from the manufacturing process, some linear, some circular, contain the blueprint for the spike code and other protein codes. Circular plasmids can self-replicate not only in bacteria or yeast cells, but also in human cells. It was shown that in individual batches up to 35% of the nucleic acid material originated from such DNA plasmid contaminations.^{46,47} This may explain the long-lasting spike production resulting from individual batches and its consequences. In some cases, spike protein could still be detected in the vascular endothelium 15 months after vaccination, as well as the S1 subunit in the brain.

According to a study published in January 2024, the injection of modified mRNA can cause a ribosomal shift in the RNA code reading frame (frameshift). As a result, cells can produce "wrong" proteins that can trigger unintended immune responses. According to the authors, this happens in 25-30% of people who have received mod-mRNA.⁴⁸

4.1.2 Toxic Effects of Lipid Nanoparticles (LNP).

Unprotected mRNA, even if stabilized with N1-methyl-pseudouridine as in the case of mod-mRNA, would degrade relatively quickly in the body, possibly before it could achieve a specific effect. To prevent this, the mod-mRNA is packaged in LNPs. The LNPs, which are approximately 100 nm in size, consist of a cationic lipid that complexes the anionic mRNA. In addition, two auxiliary lipids, mostly cholesterol and polyethylene glycol (PEG), are present to stabilize the particles. The nanostructures are intended to protect the active ingredient and improve cell membrane permeability.

For the mRNA vaccines BNT162b and mRNA-1273, ALC-0315 [[[4-hydroxybutyl]azandiyl]di(hexane-6,1-diyl) bis(2-hexyldecanoate)]] and lipid H (SM-102) (9-heptadecanoyl 8-[(2-hydroxyethyl)[6-oxo-6-(undecyloxy)hexyl]amino]octanoate), are used as cationic lipids.

LNPs can cross the brain barrier, are accumulated in the liver and can induce programmed cell death (apoptosis). LNPs can cause DNA fragmentation. In cell cultures, this effect could be suppressed by the addition of a reducing agent (N-acetylcysteine), suggesting that it is mediated by reactive oxygen species (ROS). Induction of ROS or free radicals by cationic lipids has been confirmed in several studies and thus carries the risk of DNA damage. This can lead to complete cell death.⁴⁹

4.1.3 Toxic Effect of the Spike Protein

The spike protein itself also has toxic activity. From the spike protein presented on the cell surface, the spike protein fragment S1 can be cleaved and enter the bloodstream. It binds and inhibits angiotensin-converting enzyme (ACE2), which in turn builds up the substrate of ACE2, angiotensin II, which plays a

⁴⁵ Aldén, M. et al. (2022) Intracellular Reverse Transcription of Pfizer BioNTech COVID-19 mRNA Vaccine BNT162b2 In Vitro in Human Liver Cell Line. *Curr. Issues Mol. Biol.* 2022; 44(3):1115-1126. <https://doi.org/10.3390/cimb44030073>

⁴⁶ McKernan, K. (2023) *Deep sequencing of the Moderna and Pfizer bivalent vaccines identifies contamination of expression vectors designed for plasmid amplification in bacteria.*

⁴⁷ McKernan, K. (2023) *Pfizer and Moderna bivalent vaccines contain 20-35% expression vector and are transformation competent in E.coli.*

⁴⁸ Mulrone, T.E. et al. (2024) N1-methylpseudouridylation of mRNA causes +1 ribosomal frameshifting. *Nature* **625**, 189–194 (2024). <https://doi.org/10.1038/s41586-023-06800-3>

⁴⁹ Ndeupen, S. et al. (2021) *The mRNA-LNP platform's lipid nanoparticle component used in preclinical vaccine studies is highly inflammatory.* *iScience* 24:103479

key role in blood pressure regulation, and can cause an increase in blood pressure.^{50,51} The spike protein has a fusogenic effect, i.e. it can cause cell fusions⁵² and also directly activate platelets, thus triggering coagulation processes. Intracellular spike protein inhibits the DNA repair.

4.1.4 Toxic Effect of Antibodies Directed Against Spike Protein

The spike protein presented on the cell surface triggers an immune cascade that leads to the destruction of the affected cells by the cytotoxic T cells. Histologically, this is known as "endotheliitis", i.e. inflammation of the cells lining the blood vessels. As a result of the destruction of the endothelial glycocalyx, the vessel walls become permeable, blood fluid can enter the vessel wall (aneurysm formation) and perivascular edema develops. The cells detach from the vessel wall. Coagulation processes begin in the affected areas, which lead to the formation of thrombi. See also [Figure 1](#).

Antibodies are known to act against an antigen. These antigens often consist of special amino acid sequences. Occasionally, antibodies can also be directed against very similar sequences and thus cause a variety of damage in the sense of an autoimmune reaction. This is called molecular mimicry. See also [4.2.4](#).

This is probably the explanation for the multiple autoimmune reactions that can occur after mod-mRNA injection, such as glomerulonephritis triggered by anti-neutrophilic cytoplasmic antibodies (ANCA)⁵³ or post-vaccinal autoimmune encephalitis.⁵⁴

4.1.5 Shedding of mRNA, Spike, Lipid Nanoparticles, Exosomes

Mod-mRNA could be detected in breast milk within 48 h after injection.⁵⁵ Whether this form of shedding causes damage to the infant is currently not certain. However, the EU's Periodic Safety Update Reports (1-3) mention several serious sequelae in breastfed infants.⁵⁶ Due to indirect exposure, these events have not been statistically evaluated. There is a lack of knowledge about long-term consequences. It was normally assumed that the mod-mRNA is destroyed during the digestive process in the infant. However, subpopulations of "activated" exosomes with altered membrane lipids can withstand very low gastric pH with mixed digestive enzymes, allowing LNP mRNA to actually enter the infant's body cells.⁵⁷

The mod mRNA acts on a variety of body cells. With the spike production and presentation of the spike, the apoptosis of the affected cells is initiated. In this state, the cells release exosomes at an increased

⁵⁰ Angeli, F. et al. (2022) COVID-19, vaccines and deficiency of ACE2 and other angiotensinases. Closing the loop on the "spike effect". *Eur. J. Intern. Med.* 103:23-28. doi: [10.1016/j.ejim.2022.06.015](https://doi.org/10.1016/j.ejim.2022.06.015)

⁵¹ Bellavite, P. et al. (2023) Immune Response and Molecular Mechanisms of Cardiovascular Adverse Effects of Spike Proteins from SARS-CoV-2 and mRNA Vaccines. doi: [10.3390/biomedicines11020451](https://doi.org/10.3390/biomedicines11020451)

⁵² Lazebnik, Y. (2021) Cell fusion as a link between the SARS-CoV-2 spike protein, COVID-19 complications, and vaccine side effects. *Oncotarget.* 2021 Dec 7;12(25):2476-2488. doi: [10.18632/oncotarget.28088](https://doi.org/10.18632/oncotarget.28088). PMID: 34917266; PMCID: PMC8664391.

⁵³ Thammathiwat T. et al. (2023) ANCA Associated Glomerulonephritis Following SARS-CoV-2 Vaccination: A Case Series and Systematic Review. *Vaccines (Basel).* 2023 May 15;11(5):983. doi: [10.3390/vaccines11050983](https://doi.org/10.3390/vaccines11050983). PMID: 37243087; PMCID: PMC10223042.

⁵⁴ Mansour K. et al. (2023) Seronegative acute encephalitis following COVID-19 vaccines: a case series of an overlooked diagnosis with literature review. *Eur J Clin Pharmacol.* 2023 Jul;79(7):975-987. doi: [10.1007/s00228-023-03510-7](https://doi.org/10.1007/s00228-023-03510-7). epub 2023 May 26. PMID: 37231308; PMCID: PMC10212735.

⁵⁵ Hanna N. et al. (2022) Detection of Messenger RNA COVID-19 Vaccines in Human Breast Milk. *JAMA Pediatr.* 2022;176(12):1268- 1270. doi: [10.1001/jamapediatrics.2022.3581](https://doi.org/10.1001/jamapediatrics.2022.3581)

⁵⁶ https://tkp.at/wp-content/uploads/2023/01/1.PSUR_organial.pdf, <https://tkp.at/wp-content/uploads/2023/03/3.PSUR-1.pdf>

⁵⁷ Askenase, P.W. (2022) Exosome Carrier Effects; Resistance to Digestion in Phagolysosomes May Assist Transfers to Targeted Cells; II Transfers of miRNAs Are Better Analyzed via Systems Approach as They Do Not Fit Conventional Reductionist Stoichiometric Concepts. *Int J Mol Sci.* 2022 May 31;23(11):6192. doi: [10.3390/ijms23116192](https://doi.org/10.3390/ijms23116192). PMID: 35682875; PMCID: PMC9181154.

rate, which can contain mod mRNA, spike and its fragments, other cellular substances such as miRNAs, and also prions.⁵⁸ These exosomes could pass on prion proteins, even misfolded ones, from cell to cell. The spike protein itself has prionogenic properties. As part of the ongoing apoptosis, there is thus the possibility that misfolded prions spread along the nerve pathways throughout the body and also into the brain. See also [4.2.4](#)

In the shedding discussion, one must ask, where can the particles go? In the area of the epidermis and mucous membranes, foreign proteins, including spike proteins, are likely to be recognized and eliminated by the immune system. Free RNA is sooner or later destroyed by local RNAses and otherwise cannot simply penetrate the cell wall. Lipid nanoparticles with mRNA can be absorbed into the cells and trigger local spike production. Transmission into the blood can only take place by transfusion.⁵⁹

4.1.6 IgG4

People who were given two or more injections of the mod-mRNA were found to have abnormally high levels of IgG4. This was the result of research conducted in May 2023. It has been reported that HIV, malaria and pertussis vaccines also induce above-normal IgG4 synthesis. IgG4 antibodies are considered "non-inflammatory antibodies" but can lead to suppression of T cells and interferon, impairing, for example, the ability to keep cancer at bay – a possible explanation for the occurrence of "turbo cancer".

In total, there are three crucial factors that determine IgG4 antibody formation:

- antigen concentration too high,
- repeated vaccination
- type of vaccine used

Initially, it was thought that an increase in IgG4 levels could play a protective role by preventing over-activation of the immune system, similar to successful allergen-specific immunotherapy by inhibiting IgE-induced effects (desensitization). However, the new findings suggest that the reported increase in IgG4 levels detected after repeated vaccination with the mod-mRNA vaccines is unlikely to be a protective mechanism. Rather, it appears to be an immune tolerance mechanism to the spike protein. This could promote unhindered SARS-CoV2 infection and replication by suppressing natural antiviral responses, which would be a possible explanation for the more frequent occurrence of COVID and other infections in mod-mRNA patients.

Increased IgG4 synthesis due to repeated mod-mRNA vaccinations with high antigen concentrations can thus cause autoimmune diseases (autoimmune myocarditis) and promote cancer growth in susceptible individuals.⁶⁰

4.2 Special Pathomechanisms

4.2.1 Endothelitis and Lymphocytic Infiltration

The effects described in "[4 Pathomechanisms](#)" lead to characteristic and vaccine-mediated pathologies:

Vaccine-induced expression of spike protein in endothelial cells inevitably results in vasculitis.

⁵⁸ Kakarla, R. et al. (2020) Apoptotic cell-derived exosomes: messages from dying cells. *Exp Mol Med* **52**, 1–6 (2020). <https://doi.org/10.1038/s12276-019-0362-8>

⁵⁹ Banoun, H. (2022) Current state of knowledge on the excretion of mRNA and spike produced by anti-COVID-19 mRNA vaccines; possibility of contamination of the entourage of those vaccinated by these products. *Infect Dis Res.* 2022;3(4):22. doi: 10.53388/IDR20221125022.

⁶⁰ Uversky V.N. et al. (2023) IgG4 Antibodies Induced by Repeated Vaccination May Generate Immune Tolerance to the SARS-CoV-2 Spike Protein. *Vaccines (Basel)*. 2023 May 17;11(5):991. doi: 10.3390/vaccines11050991. PMID: 37243095; PMCID: PMC10222767.

Investigations by the pathologist Prof. Dr. med. Arne Burkhardt (Reutlingen) have made this clear.

A case report of a 76-year-old man who died three weeks after receiving his third COVID-19 vaccination presents additional data.⁶¹ Histopathological analyses of the brain led to evidence of multifocal vasculitis and necrotizing encephalitis. In the heart, vasculitis of small vessels and lymphocytic myocarditis were detected. Spike protein has been detected in the inflammatory foci of both the brain and the heart, especially in the endothelial cells of small blood vessels. Corresponding control experiments confirmed that the observed spike protein expression was indeed caused by the mod-mRNA injections that the patient had received, and not by an undiagnosed infection with the virus itself.

Multi-organ vasculitis with predominant small vessel involvement is now becoming a common topic underlying adverse events after COVID-19 vaccination. Impairments of the capillary vessels with thrombus formation in the brain and heart are observed again and again.^{55,62} The observed clinical picture in small and very small vessels is new and is considered by the authors to be characteristic of the effect of gene-based vaccines.

Especially in vaccinated patients after recovery from real SARS-CoV-2 infections, fulminant reactions are to be expected. Such patients have high levels of circulating IgG antibodies against the spike protein.⁶³ As a result, a complement attack on the cells transfected with the vaccine can be immediate and massive.

A case report of sudden death caused by myocarditis after the first vaccination with direct evidence of complement activation in the heart illustrates this.⁶⁴

The histological examination of various tissues from patients who died after GIT showed an almost uniform picture: lymphocytic reactions in the myocardium, epicardium and pericardium, but also in the brain and other organs in the sense of "lymphocytic predominance". In addition, pronounced damage to the large vessels, texture disorders in the vessel wall, loss of elastic fibers, aortic dissections with aneurysm formation, dissections of smaller arteries also in the brain were impressive. Almost regularly, detachments of the endothelial cells of the vessels appear, also in the examination material of biopsies. The cause can only be an immune reaction against spike-presenting cells in the sense of an autoimmune reaction, especially since the spike protein could be visualized immuno-histochemically and could be detected in almost all vascular endothelia, whereas capsid antigen (as an indication of SARS-CoV2 infection) was not detectable.^{65,66}

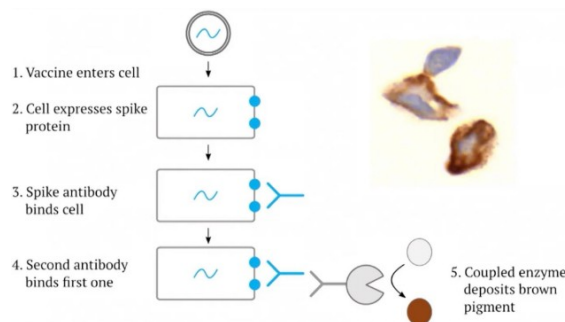


Figure 2: Immuno-histochemistry can visualize the spike protein in single cells.

⁶¹ Mörz, M. (2022) A Case Report: Multifocal Necrotizing Encephalitis and Myocarditis after BNT162b2 mRNA Vaccination against Covid-19. *Vaccines* 10:2022060308.

⁶² Prof. Dr. med. Arne Burkhardt, pathologist, Reutlingen, Germany, personal communication

⁶³ Killingley, B. et al. (2022) Safety, tolerability and viral kinetics during SARS-CoV-2 human challenge in young adults. *Med. (preprint)*

⁶⁴ Choi, S. et al. (2021) Myocarditis-induced sudden death after BNT162b2 mRNA COVID-19 vaccination in Korea: case report focusing on histopathological findings. *Korean Med Sci.* 36:e286

⁶⁵ Prof. Dr. med. Arne Burkhardt, pathologist, Reutlingen, Germany, personal communication

⁶⁶ Palmer, M., Bhakdi S. (2022) / Doctors for COVID Ethics Vascular and organ damage induced by mRNA vaccines: irrefutable proof of causality.

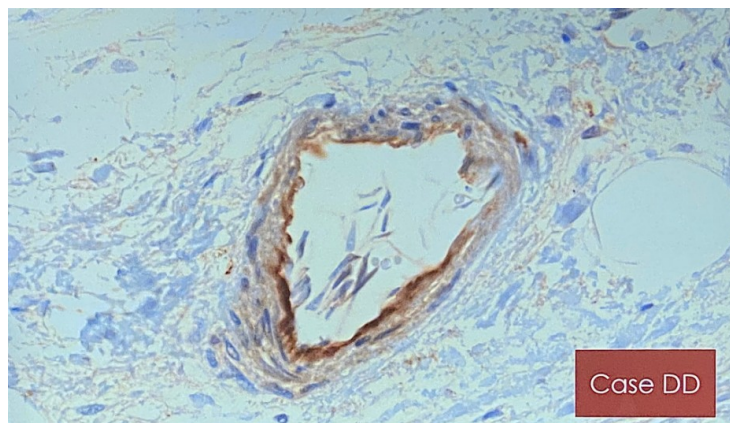


Figure 3: Spike protein (brown) in the endothelial cells of an incised vessel with detached endothelial cells, immunohistochemically stained (courtesy of Prof. Arne Burkhardt).

Thus, antigen expression in endothelium of blood vessels causes the destruction of the vessel walls. As a result of endothelial damage, microcirculatory disorders occur. Reduced blood flow causes organ damage and, in the area of the peripheral nerves or nerve plexuses, variable pain symptoms and symptoms such as polyneuropathy result.

The pathomechanism of Raynaud's symptoms, which occur in some patients, is currently unclear. Further investigations will have to show whether cold agglutinins (IgM autoantibodies) or cryoglobulins play a role here.

As pathologist Ryan Cole was able to show, an accumulation of the spike protein can also occur in the adrenal glands. This affects both the adrenal medulla and the cortex. Dysfunction of the adrenal glands could explain part of the post-vac symptoms, such as disorders of blood pressure regulation (postural orthostatic tachycardia syndrome). In addition, the overall hormone regulation can be negatively influenced (CFS/ME).

4.2.2 Myocarditis, Endocarditis, Pericarditis

In Germany, there are usually about 3,500 cases of severe myocarditis per year, with about 150 deaths. The main cause is likely to be viral infections. The incidence is estimated to be between 1/10,000 and 1/100,000.

Just as the endothelia of the blood vessels can be damaged by spike production, damage can also occur to the endothelium of the endocardium, which can then also affect the myocardium, for example, via exosomal mechanisms. In the wake of mod-mRNA administration, up to 1:5000 cases of myocarditis occurred in people under 60 years of age, depending on the study. According to a study from Hong Kong, the number in vaccinated adolescents was as high as 1:3000.⁶⁷ In contrast, there was no increased incidence of pericarditis or myocarditis in adult patients who had recovered from COVID-19 infection.⁶⁸

The correlations with an accidental intravascular injection in muscular and acute cardiac incidents have already been shown above (4 Pathomechanisms). Cardiac arrhythmias play an important prognostic role, especially in the acute phase.

Remarkably, significantly elevated levels of the full-length spike protein were detected in the plasma of individuals with myocarditis after mod-mRNA injection. This was not bound to antibodies, while no free

⁶⁷ Chua G. T. et al. (2022) Epidemiology of Acute Myocarditis/Pericarditis in Hong Kong Adolescents Following Comirnaty Vaccination, *Clinical Infectious Diseases*, Volume 75, Issue 4, 15 August 2022, Pages 673-681, <https://doi.org/10.1093/cid/ciab989>

⁶⁸ Tuvali O et al. (2022) The Incidence of Myocarditis and Pericarditis in Post COVID-19 Unvaccinated Patients—A Large Population-Based Study. *Journal of Clinical Medicine*. 2022; 11(8):2219. <https://doi.org/10.3390/jcm11082219>

spike was detected in asymptomatic vaccinated controls.⁶⁹ See also [4.1.1](#). Equally noteworthy is the fact that even asymptomatic individuals show pathological changes in the myocardium after mRNA injection, e.g., myocardial fluorine-18 (18F)-fluorodeoxyglucose (FDG) uptake on positron emission tomography (PET/CT) images is increased in asymptomatic patients vaccinated against SARS-CoV-2 compared to unvaccinated patients, suggesting latent myocardial damage.⁷⁰

Myocarditis, regardless of its cause, can never be considered harmless and does not have a favorable prognosis per se. The long-term effects depend on the degree of destruction of the myocardium. The heart muscle tissue is not regenerable. Even minor damage usually means a lifelong impairment of cardiac function.

4.2.3 Damage to the ACE2 receptor

In addition to the damage to the vascular endothelia as part of the immune reactions that take place after endogenous spike production, the spike protein also appears to directly damage the endothelial cells and in particular the ACE2 receptor. It has also been shown that spike protein activates intracellular signals to degrade ACE2 mRNA. As a result, the ACE2-dependent signaling pathway is impaired and thus the homeostasis of the renin-angiotensin system.⁷¹

4.2.4 Misfolding of Proteins, Prion Mechanism, Amyloidosis

In 2022, studies by Luc Montagnier, Jean Claude Perez and others were able to demonstrate a prion mechanism in a total of 26 patients after RNA injections.⁷²

The question arises whether the increased formation of amyloid plaques, as demonstrated in individual histological studies, should be interpreted in the same sense. Many data suggest a molecular mechanism for the possible amyloid-genesis of the SARS-CoV-2-S protein in humans, which is facilitated by endoproteolysis, for example by neutrophil elastase.^{73,74}

In terms of clinical picture, there are similarities with the so-called transthyretin amyloidosis, an acquired ATTR amyloidosis, occurring mainly in the elderly (senile systemic amyloidosis), with cardiac arrhythmias, exercise dyspnea and polyneuropathic symptoms. Transthyretin is a transport protein for thyroxine among others. In case of misfolding it is deposited in tissues like myocardium and nervous system.

In connection with a drug advertised by Pfizer (Tafamidis, annual therapy costs of 320,000 € for 61 mg daily!), this form of amyloidosis has been increasingly discussed since spring 2023, especially since it has now also been detected in younger patients. There is some evidence to suggest that this is an attempt to disguise mod-mRNA-related amyloidosis while creating a market for an overpriced drug.

⁶⁹ Yonker L.M. et al. (2023) *Circulating Spike Protein Detected in Post-COVID-19 mRNA Vaccine Myocarditis*, *Circulation*, 2023 Mar 14;147(11):867-876. doi: 10.1161/CIRCULATIONAHA.122.061025.

⁷⁰ Takehiro Nakahara et al. (2023) *Assessment of Myocardial 18F-FDG Uptake at PET/CT in Asymptomatic SARS-CoV-2-vaccinated and Non vaccinated Patients*, *Radiology* 308:3

⁷¹ Gao X et al.(2022) *Spike-mediated ACE2 down-regulation was involved in the pathogenesis of SARS-CoV-2 infection*. *J Infect.* 2022 Oct;85(4):418-427. doi: 10.1016/j.jinf.2022.06.030. Epub 2022 Jul 3. PMID: 35793758; PMCID: PMC9250808.

⁷² Perez, J.-C., Moret-Chalmin, C., Montagnier, L. (2023) *Towards the emergence of a new form of the neurodegenerative Creutzfeldt- Jakob disease: Twenty six cases of CJD declared a few days after a COVID-19 "vaccine" Jab "* doi: 10.5281/zenodo.7540331

⁷³ Nyström, S., Hammarström P. (2022) *Amyloidogenesis of SARS-CoV-2 spike protein* *Journal of the American Chemical Society* 2022 144 (20), 8945-8950 DOI: 10.1021/jacs.2c03925.

⁷⁴ Arne Burkhardt, Walter Lang, Norbert Schwarz, (2023) *trdition*, ISBN 978-3-347-96255-2, *Vom Stachel im Fleisch - Wie das Corona-„Impf“-Spikeprotein Schaden anrichtet*

It is very likely that vaccine-induced spike protein can induce misfolding or alteration of endogenous proteins, such as α -synuclein (Parkinson's), A β - and tau-prions (Alzheimer's), and tau-prions (frontotemporal lobar degeneration, FTLD). In the development of chronic fatigue syndrome (ME/CFS), such relationships should at least be discussed. See also [6.2.1.6](#).

Another pathomechanism could also be conceived as a cause:⁷⁵

There is an amino acid sequence in the spike protein that is very similar to an amino acid sequence in the C-terminal domain of prion proteins. Thus, it would be possible that it is not the spike protein that causes misfolding of prion proteins, but that the antibodies formed against the spike destroy the prion proteins as a result of molecular mimicry. The destroyed non-functional proteins would then be deposited as amyloid plaques.

The antibody hypothesis of S. *Seneff* could indeed link Long-haul COVID and Post-Vac or Post-GIT: Antibodies against the artificially modified spike are also produced in COVID, which would enable the same mimicry mechanism as in Post-Vac to destroy prion proteins.

Some studies do indeed establish a link between SARS-CoV-2 infection and Alzheimer disease, or decline in brain performance, and refer in part to spike protein. However, endogenous spike protein production after mod-mRNA injection is completely ignored.⁷⁶

4.2.5 Psychological Effects

The overall social background that brought individuals to the "Corona vaccination" in 2021 and 2022 was a very special one and not comparable to other social or medical events of recent decades. Basically, there were three large groups: People who were very afraid of the Corona virus or a Corona infection, people who went to the "vaccination" out of generally demanded "solidarity" and thirdly, people who had the mod-mRNA injection more or less voluntarily for professional and / or private ("I want to travel") reasons. In addition, there are mixed images of these groups. Now, if physical symptoms occurred after the mod-mRNA injection, they can be processed differently. Depending on the underlying personality, the existing defense mechanisms as well as pre-existing psychological burdens, coping will take place differently.

In addition, there is the overall social situation, which was and still is strongly characterized by fear and stress as well as the defense mechanisms of repression to denial, displacement, projection and dissociation. In particular, due to the more or less usual denial of possible "vaccination side effects" by most doctors, but also in the big media as well as by many people in their private lives, an affected person is subject to an extreme psychological stress situation. He has to cope with the actual physical symptoms, for which there is often no adequate medical therapy, as well as with the completely alienated reaction from his environment. Inner and outer perception do not match. This corresponds to the greatest psychological stress, an independent trauma.

It can be assumed that the entirety of corona restrictions trigger pre- or post-traumatic stress disorder (PTSD), which, together with the spike protein after mod mRNA injection, impairs hippocampal neurogenesis.⁷⁷ This has an impact on the so-called "index neurons" and on our autobiographical memory, which explains a number of psychological symptoms up to the development of dementia.⁷⁸ Indeed this mixture results in a variety of possible stress reactions, as they are well known in psychoneuroimmunology. Existing psychological stresses such as depression or anxiety disorders can intensify or recur, but the physical symptoms can also be intensified or shifted. In addition to the persistent stress situation, an intensification and chronification is to be expected. Cognitive dissonance, like "your symptom has nothing to do with the vaccination", makes psychological processing much more difficult. How these entanglements will affect classical psychosomatic processes in the long term cannot be foreseen at the moment.

⁷⁵ Stephanie Seneff, Senior Research Scientist at the Computer Science and Artificial Intelligence Laboratory at MIT, Cambridge, USA.

⁷⁶ Ceban F. et al. (2022) Fatigue and cognitive impairment in post-COVID-19 syndrome: A systematic review and meta-analysis. *Brain Behav Immun.* 2022 Mar;101:93-135. doi: 10.1016/j.bbi.2021.12.020. Epub 2021 Dec 29. PMID: 34973396; PMCID: PMC8715665.

⁷⁷ The other site of cerebral neurogenesis is the subventricular zone, an area adjacent to the cerebral ventricles

⁷⁸ Michael Nehls (2023), *Das indoktrinierte Gehirn*

The pathomechanism of an ME/CFS syndrome has also not yet been clarified in this sense, see chapter [6.2.1.6](#).

4.2.6 Induction of Hepatitis by Vector Vaccines with Adenoviruses as Carriers.

Adeno-associated virus 2 (AAV2) is now considered to be the cause of the initially unclear, sometimes life-threatening hepatitis in young children. AAV is a non-enveloped virus that can be easily manipulated to deliver RNA or DNA to target cells and plays an important role as a vector virus in vector vaccines (Astra-Zeneca, Johnson & Johnson, Janssen). These viruses are actually not capable of replication and need another adenovirus to replicate. However, it cannot be ruled out that AAV2 changes in the body through contact with other adenoviruses, which could then transmit these viruses.^{79,80,81} No study on this topic questioned whether parents / siblings of the affected infants and toddlers had been treated with an appropriate "vaccine".

4.2.7 Influence on Spermatogenesis with Decrease of Sperm Count

Histological examination of testicular tissue after death in temporal relation to mRNA injection showed marked changes in sperm production, presumably due to spike-induced autoimmune reactions in the epithelia of the testicular tubules and the Leydig and Sertoli cells of the testicle and / or endotheliitis of the supplying vessels. A decline in fertility can be assumed. Individual patients reported erectile dysfunction and decreased libido.

Disruption of the hypothalamic-pituitary-gonadotropin axis by vascular effects or deposition of pathogenic proteins may also be a pathomechanism.⁸²

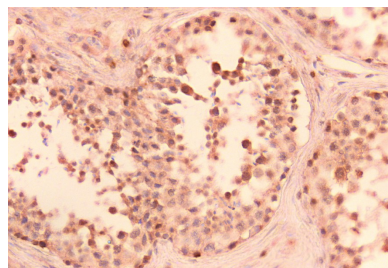


Figure 4: Spike detection (brown) in the testis of a deceased 29-year-old 134 days after the 2nd mRNA injection. Almost no sperm are detectable (courtesy of Prof. Arne Burkhardt).

4.2.8 Increased Accumulation of mod-mRNA in the Ovaries.

Pfizer and BioNTech pointed out an accumulation of mod-mRNA in the ovaries very early. A relatively

⁷⁹ Ho, A. et al. (2023) Adeno-associated virus 2 infection in children with non-A-E hepatitis. *Nature* (2023). <https://doi.org/10.1038/s41586-023-05948-2> 617, 555-563.

⁸⁰ Naso, M.F. et al. (2017) Adeno-Associated Virus (AAV) as a Vector for Gene Therapy *BioDrugs* 2017; 31(4): 317-334 doi: [10.1007/s40259-017-0234-5](https://doi.org/10.1007/s40259-017-0234-5)

⁸¹ Radukic, M.T. et al. (2021) Nucleic Acid Sequence Composition of the Oxford - AstraZeneca Vaccine ChAdOx1 nCoV-19 (AZD1222, Vaxzevria) <https://doi.org/10.21203/rs.3.rs-799338/v1> (preprint).

⁸² Gat, I. et al. (2022) Covid-19 vaccination BNT162b2 temporarily impairs semen concentration and total motile count among semen donors. *Andrology*. 2022 Sep;10(6):1016-1022. doi: [10.1111/andr.13209](https://doi.org/10.1111/andr.13209).

large number of women complain of menstrual cycle disorders and increased menstrual bleeding or postmenopausal bleeding and decline in libido after mod-mRNA injection. A study from Sweden from May 2023 confirms this.⁸³ Clarifying investigations in Germany are still pending.

Although the placental permeability of mod-mRNA has not yet been reliably demonstrated, the Periodic Safety Update Reports (1-3) of the EU describe developmental disorders of the embryo / fetus, increased miscarriages, also increased stillbirths.⁸⁴ Throughout Europe, there is a significant decline in the birth rate, especially in Germany.⁸⁵

4.2.9 Spike-induced immune thrombotic thrombocytopenia (VITT)

Endothelial damage induces coagulation processes with thrombi formation. The spike protein can also activate platelets itself, triggering not only intravascular coagulation processes, but also immune thrombocytopenia (ITP). It is also referred to as vaccine-induced thrombotic thrombocytopenia (VITT) and thrombosis-with-thrombocytopenia syndrome (TTS).

This immunothrombotic thrombocytopenia has been observed especially after administration of the Johnson and Astra-Zeneca vector vaccines. With the two mod mRNA injection solutions from Moderna and BioNTech, respectively, the risk appears to be lower, but cannot be ruled out. This can be seen, among other things, in the fact that the D-dimers in the blood are also increased in many mod mRNA vaccinated people.

Venous or arterial thrombosis may occur, especially in unusual locations, including cerebral sinus vein thrombosis (CSVT)/splanchnic thrombosis, and mild to severe thrombocytopenia. Marked thrombocytopenia and intracranial hemorrhage were associated with high mortality.⁸⁶

The clinical picture is very similar to heparin-induced thrombocytopenia type II (HIT2), in which a complex of heparin and platelet factor 4 (CXCL4), i.e. disease-causing factor, is considered. Some people develop antibodies against this complex, which lead to the clumping of platelets and the formation of thrombosis, while at the same time consuming the platelets.

4.2.10 Loss of Elastic Fibers in the Vessel Walls and in the Skin

The elastic fibers are formed by embryonic or juvenile fibroblasts and by smooth muscle cells. They are found in large numbers in the skin, elastic cartilage, vascular walls, lung tissue and vocal cords. During histological processing of tissue samples including biopsy cases of Post-Vac victims, in some cases the pathologists found a destruction of elastic fibers in arterial walls like in the aorta (with aneurysm formation), but also in the skin. The pathomechanism is unclear, explains some of the vascular problems on the one hand, and on the other hand confirms the suspicion that mod-mRNA injection leads to premature aging of the skin.⁸⁷ There might be antibodies involved through molecular mimicry, or it could be an interaction with other harmful substances in the body, such as glyphosate.⁸⁸

⁸³ Ljung R. et al. (2023) Association between SARS-CoV-2 vaccination and healthcare contacts for menstrual disturbance and bleeding in women before and after menopause: nationwide, register-based cohort study *BMJ* 2023; 381 :e074778 doi:10.1136/bmj-2023-074778

⁸⁴ <https://tkp.at/wp-content/uploads/2023/03/3.PSUR-1.pdf>

⁸⁵ Kuhbandner, C., Reitzner, M. (2023) "Estimation of Excess Mortality in Germany During 2020-2022." *Cureus* 15(5): e39371. DOI 10.7759/cureus.39371

⁸⁶ Zhang S. et al. (2020) SARS-CoV-2 binds platelet ACE2 to enhance thrombosis in COVID-19. *J Hematol Oncol* 13, 120 (2020). <https://doi.org/10.1186/s13045-020-00954-7>

⁸⁷ Prof. Dr. med. Arne Burkhardt, pathologist, Reutlingen, Germany, personal communication

⁸⁸ Stephanie Seneff (2021) *Toxic Legacy, How the Weedkiller Glyphosate is Destroying our Health and the Environment*

4.2.11 VAIDS - Vaccine Acquired Immune Deficiency Syndrome

Some authors now speak of a Vaccine Acquired Immune Deficiency Syndrome - VAIDS. They assume that as a result of mod-mRNA administration, a permanent overload of the immune system occurs with loss of function of the killer cells, decrease and functional exhaustion of T helper cells and cytotoxic T cells and shutdown of the interferon system. As a result of a disruption of the repair mechanism of the T-cell DNA, these cells are functionally weakened, resulting in a general immunodeficiency with susceptibility to infectious diseases and tumor growth.

In this sense, the reactivation of dormant viral or bacterial infections such as herpes zoster, cytomegalovirus, Epstein-Barr virus, Coxsackie virus, Lyme disease and other germs is to be understood (4 Pathomechanisms), as well as the development of turbo cancer (4.2.11).

Even germs that are purely facultatively pathogenic for humans can be activated in this way and cause diseases.

Since 2022, there has also been an increasing number of case reports of giant cell arteritis in the specialist media, even without a typically increased erythrocyte sedimentation rate or with only slightly increased CRP.⁸⁹ This suggests a general link to rheumatological diseases.

Since the beginning of 2022, case reports of autoimmune diseases, including new onset or recurrence of psoriasis, lichen planus, eczematous dermatitis, morbilliform eruptions, and some other dermatoses, have been accumulating in connection with mod-mRNA injection.^{90,91,92}

In this context, it is worth noting the autoantibodies that occur in the wake of mod-mRNA injection, which are often dramatically increased in serum, for example, ANA, ANCA, TPO, TRAK, GPCR-AK and others.

4.2.12 Reactivation of Dormant Cancer, Turbo-Cancer

Down-regulation of TL receptors and of P53 tumor suppressor genes as a result of mod-mRNA injection may accelerate carcinogenesis. In particular, there seems to be an increased reactivation of dormant cancers, sometimes with dramatic progressions. This is now referred to as *turbo cancer*.

BRCA1 (BRCA1 Breast Cancer 1) and BRCA2, are other tumor suppressor genes which play an important role in the repair of DNA double-strand breaks. In normal cells, these genes help make proteins that repair damaged DNA. Mutated versions of these genes can lead to abnormal cell growth, which can lead to breast cancer, among other organs. These two genes also seem to be impaired in their function by the action of the spike proteins and the induced antibodies. The pathologist Ute Krüger, Stockholm has dealt with this topic in particular and has recognized dramatic correlations.^{93,94}

A case report documented the development of B-cell lymphoblastic lymphoma after intravenous BNT162b2 mRNA booster in a BALB/c mouse (a lab-grown albino strain of the house mouse) and referred to the urgent need for further investigations.⁹⁵

⁸⁹ Xia C, Edwards R, Omidvar B. (2022) A Case of Giant Cell Arteritis With a Normal Erythrocyte Sedimentation Rate (ESR) Post ChAdOx1 nCoV-19 Vaccination. *Cureus*. 2022 May 27;14(5):e25388. doi: 10.7759/cureus.25388. PMID: 35774715; PMCID: PMC9236663.

⁹⁰ Aryanian, Z. et al. (2022) Morphea in two patients after being infected to and being vaccinated against SARS-CoV-2 infection. *Authorea*. March 14, 2022. *clin case rep*. 2022 Apr 18;10(4):e05667. doi: 10.1002/ccr3.5667

⁹¹ Alhammad N. et al. (2022) Morbilliform Eruption After Administration of Second Dose of Oxford/AstraZeneca Vaccine. *Cureus* 14(5): e24649. doi:10.7759/cureus.24649.

⁹² Gambichler, T. et al. (2021) Cutaneous findings following COVID-19 vaccination: review of world literature and own experience. *J Eur Acad Dermatol Venereol*. 2022 Feb;36(2):172-180. doi: 10.1111/jdv.17744. epub 2021 Nov 2. PMID: 34661927; PMCID: PMC8656409.

⁹³ <https://doctors4covidethics.org/covid-vaccination-and-turbo-cancer-pathological-evidence/>

⁹⁴ <https://tkp.at/2023/03/15/vaers-daten-belegen-turbokrebs-6-metastasen-und-uebersicht/>

⁹⁵ Eens S, et al. (2023) B-cell lymphoblastic lymphoma following intravenous BNT162b2 mRNA booster in a BALB/c mouse: A case report. *Front Oncol*. 2023 May 1;13:1158124. doi: 10.3389/fonc.2023.1158124. PMID: 37197431; PMCID: PMC10183601.

In a 2021 in vitro study from India, it was shown that human cells exposed to plasmids containing the genetic code for the spike protein release exosomes containing the spike protein along with certain specific microRNA signaling molecules. These are then taken up by microglia in the brain. The result is neurological damage and impaired immune function. MicroRNAs are short RNA sequences that act as regulatory agents and control the expression levels of many proteins. The study from India identified two specific microRNAs packed with the spike proteins in the exosomes: miRNA-148a and miRNA-590. MicroRNA-148a is overrepresented in the context of glioblastoma, the most aggressive type of brain tumor. miRNA-590 is also over-expressed in glioma cells and has been shown to be particularly abundant in glioma tissues that are resistant to radiotherapy.⁹⁶ At this point, it should also be noted that the lockdowns and restrictions 2020 - 2022 have prevented many patients from seeing a doctor or clinic if they have symptoms. It is likely that early stages of malignancies could not be diagnosed, stages where therapeutic prospects are much better than later stages. It is clear that this will be noticeable later.⁹⁷

4.2.13 Inflammatory diseases of the musculoskeletal system

Almost all post-vac patients complain of pain in the musculoskeletal system, although clinical examinations reveal few usable findings. Young, athletic people are particularly affected. A new study shows a link between mod mRNA injection and subsequent inflammatory diseases of the musculoskeletal system.⁹⁸ Thereafter, within 12 weeks of mod mRNA injection, incidences of plantar fasciitis, rotator cuff syndrome, adhesive capsulitis, herniated disc, spondylosis, bursitis, Achilles tendonitis, and De Quervain tendosynovitis increased significantly in "vaccinated" compared to the unvaccinated group. The pathogenesis is not discussed in detail in the study. As with almost all post-vac symptoms, either direct spike effects, immune or autoimmune reactions, or vascular mechanisms are likely to be responsible. See also [6.2.1.7](#)

5 Diagnostics for Suspected Post-GIT

Diagnosis of post-GIV is particularly challenging in view of the wide variation in symptoms.

5.1 Anamnesis

In addition to the usual basic medical history, it is important to determine the exact time of the mod-mRNA injections, including the batch number, the time of onset of the symptoms and whether and, if so, which therapeutic measures have already been initiated. On the basis of the batch number, it can then be checked on relevant websites whether the batch used was one in which side effects occurred frequently.⁹⁹

The psychological anamnesis is also important, whether there were previous depressive disorders or dissociative disorders. The social anamnesis can provide decisive insight into the extent to which the corona measures such as lockdowns, losses in the social environment, problems at work could have played a role in the symptoms. For example, a *nocebo effect* in those affected who have undergone vaccination under relative compulsion should be considered.

⁹⁶ Mishra, R., Banerjee A.C. (2021) SARS-CoV-2 spike targets USP33-IRF9 axis via exosomal miR-148a to activate human microglia. *Front Immunol.* 2021 Apr 14;12:656700. doi: 10.3389/fimmu.2021.656700. PMID: 33936086; PMCID: PMC8079643.

⁹⁷ <https://tkp.at/2023/04/28/krebsbombe-durch-lockdowns-schlimmer-als-covid/>

⁹⁸ Young Hwan Park et al., (2023) Correlation between COVID-19 vaccination and inflammatory musculoskeletal disorders, medRxiv preprint doi: <https://doi.org/10.1101/2023.11.14.23298544>; (preprint)

⁹⁹ How Bad is My Batch, <https://knollfrank.github.io/HowBadIsMyBatch/HowBadIsMyBatch.html>

The anamnesis of pain is of great importance, as pain is the highest level of suffering for the patients. It is medically and legally irresponsible if the anamnesis does not ask about the so-called "vaccinations", their batch numbers and the time interval between the injections and the symptoms that have occurred, and if these data are not accurately documented.

5.2 Physical Examination

In addition to the standard examinations such as blood pressure measurement, auscultation, visual inspection of skin and lymph nodes, the cardiac examination with ECG, if necessary with exercise and, in the case of unclear findings, echocardiography is part of the program. A chest X-ray may also be useful. It is important to have a neurological status, reflex status and clarification of whether sensory or motor dysfunctions are present. A repetition of the examination at intervals of several weeks is indicated to document changes.

5.3 Laboratory Tests

Standard laboratory tests are initially sufficient for a general overview: BSR or CRP, complete blood count, liver enzymes, Blood sugar, albumin, creatinine, coagulation status and urine test strips for protein.

5.3.1 Symptom Related Laboratory Tests

Depending on the symptomatology, further laboratory tests should be performed:

- D-dimers as a biomarker for fibrinolysis in intravascular coagulation and hyper-fibrinolysis
- Electrolytes: Na, K, Ca in case of cardiac arrhythmias and/or suspected disorders of the acid-base balance
- Creatine kinase (CK) in muscular complaints, suspicion of myocardial infarction
- hs-troponin for suspected endocarditis, myocarditis or pericarditis
- LDH for suspected myocardial infarction or pulmonary embolism, differentiation of possible jaundice, suspected haemolytic anaemia and for the diagnosis of organ damage (quantitative isoenzyme determination)
- Serum electrophoresis – to determine the proportions of the different proteins (protein fractions)
- Anti-glomerular basement membrane antibody for suspected autoimmune glomerulonephritis
- Thyroid levels in case of suspected autoimmune thyroiditis / Graves' disease, e.g. in connection with the use of the Johnson&Johnson vector vaccine
- Pancreatic amylase and lipase in case of suspected pancreatic involvement
- Rheumatism factors, anti-nuclear antibodies, anti-nuclear factors in case of suspected rheumatic disease or autoimmune mechanisms
- Antiphospholipid antibodies (APA) for suspected autoimmune diseases, rheumatic diseases
- phlebitis, pericarditis
- Vitamin status in case of clinically justified suspicion of deficiency symptoms

5.3.2 Special Laboratory Tests

If the suspicion of damage after mod-mRNA administration is confirmed, it should be clarified whether spike protein is still actively present in the body. It would make sense to determine the spike antigen in the plasma / serum, in addition to the virus nucleocapsid antigen in the plasma / serum. In July 2023,

such tests are still at the experimental stage and are currently only offered by a few laboratories, for example by the MMD laboratory in Magdeburg.¹⁰⁰

The much more complex biopsy with spike-AG / nucleocapsid-AG with immuno-histological staining, on the other hand, is already established but is only performed by a few pathologists in Germany (for example, Dr. med. Michael Mörz, Dresden and the new Institute of the MWGFD¹⁰¹). See also [Figure 2](#). In the absence of spike detection, it can be assumed that there is no mod-mRNA-related damage. If spike-AG is detected alone, this suggests a consequence of mod-mRNA injection, and if spike-AG plus capsid-AG is detected, a SARS-CoV-2 infection would also be conceivable as a cause. A paper published in August 2023 shows the possibility of establishing a unique signature in mod-mRNA damaged individuals in peripheral blood based on the "double proline peptide" in the spike protein. In 50% of the subjects who received a mod-mRNA injection, the "double-proline" peptide could be detected up to 187 days after injection, but in none of the 20 control patients. The methodology is in the pilot stage and seems promising.¹⁰²

In the context of the investigation of CFS/ME after mod mRNA injection, the determination of angiotensin II type 1 receptor antibodies, alpha-2B adrenergic receptor antibodies and IL-6 seems to be useful.¹⁰³ See also [6.2.1.6](#)

A rough quantitative estimation of the extent of micro-perfusion disturbance is possible with the determination of vascular endothelial growth factors (VEGF), whereby in the Post-GIT syndrome late phase, unlike in Long-haul COVID, there are usually significantly increased values.

In the case of many "possible" laboratory tests, some of which are pathophysiologically revealing, one should consider whether the results actually have therapeutic consequences, especially since some of the tests will not be paid by the patient's health insurance.

5.3.3 Hormonal Status

Indicated in case of suspected disorders of hormone production or the hypothalamic-pituitary-endocrine gland axis due to vascular effects, autoimmune mechanisms or deposition of pathogenic proteins. Thyroid levels in particular should be kept in mind, as thyroid dysfunction such as autoimmune thyroiditis or Hashimoto's thyroiditis occurred after the use of mod-mRNA injections, but also of the "vector vaccines".^{104,105}

5.3.4 Infection Diagnostic, Virology, Bacteriology

Here, the procedure depends on the clinical complaints, the clinical findings and the laboratory findings.

¹⁰⁰ MMD GmbH & Co. KG | AT ZENITH II | Brenneckestraße 20 | 39118 Magdeburg | E-mail: labor@mmd-web.de | Website: www.mmd-web.de – +49 391 5353797 – Request order form by phone

¹⁰¹ <https://www.mwgfd.org/2023/08/presseerklaerung-impfschaden-pathologie-wird-fortgesetzt-punctum/> – +4985120425681

¹⁰² Carlo Brogna et al., (2023) Detection of recombinant Spike protein in the blood of individuals vaccinated against SARS-CoV-2: Possible molecular mechanisms;

¹⁰³ Amelie Semmler et al. (2023) Chronic Fatigue and Dysautonomia following COVID-19 Vaccination Is Distinguished from Normal Vaccination Response by Altered Blood Markers, *Vaccines* 2023, 11, 1642.

¹⁰⁴ Jafarzadeh, A. et al. (2022) Thyroid dysfunction following vaccination with COVID-19 vaccines: a basic review of the preliminary evidence. *J Endocrinol Invest.* 2022 Oct;45(10):1835-1863. doi: 10.1007/s40618-022-01786-7. epub 2022 Mar 26. PMID: 35347651; PMCID: PMC8960081.

¹⁰⁵ Ruggeri R.M. et al. (2022) SARS-CoV-2 vaccine may trigger thyroid autoimmunity: real-life experience and review of the literature. *J Endocrinol Invest.* 2022 Dec;45(12):2283-2289. doi: 10.1007/s40618-022-01863-x. Epub 2022 Jul 12. PMID: 35829989; PMCID: PMC9277984.

Depending on the clinical findings, special laboratory tests must be carried out. Wide-ranging tests are not very helpful and often create more confusion than goal-oriented help, especially since there are usually no therapeutic consequences.

5.3.5 Toxicological Tests

If toxic influences are suspected, targeted toxicological tests must be carried out depending on anamnesis and clinical findings. It should be remembered that patients may have been harmed by self-medication. Especially through "self-help groups", sometimes obscure therapies are taught, which often are applied without medical care.

5.4 Special Diagnostics

In the case of inconclusive findings, specialist examinations may be necessary.

5.4.1 Cardiac Examination

Given the frequency of cardiac damage after mod-mRNA injection, careful cardiac diagnosis is essential. Classical diagnostics here include:

- ECG, if necessary stress ECG, long-term ECG
- Echocardiography
- Chest x-ray
- hs-troponin in suspected myocarditis
- Cardiac-MRI with gadolinium mapping in suspected myocarditis.

Cardiac-MRI is now performed in all major medical centers and has been confirmed as diagnostic in suspected myocarditis.¹⁰⁶

5.4.2 Neurological Examination

Neurological diseases have increased with alarming frequency since the beginning of genetic immunization experiments. In the WHO database, for example, an increase in Guillain-Barré syndrome of 270% within one year is recorded worldwide.¹⁰⁷ Typical symptoms range from muscular weakness to paralysis, usually starting in the legs. It is possible that autoimmune processes play a decisive role here.

Transverse myelitis, an otherwise very rare disease, has occurred almost 180% more frequently.¹⁰⁷ The symptoms range from muscle weakness, paralysis and even paraplegia.

There are also indications of an increase in dementia. Numerous cases of relapses or recurrences of multiple sclerosis after Corona "vaccinations" have also been described, including initial manifestations.¹⁰⁸

¹⁰⁶ <https://healthcare-in-europe.com/de/news/myokarditis-mrt-hat-hoechste-sensitivitaet-spezifitaet.html>

¹⁰⁷ <https://sciencefiles.org/2023/05/04/bis-zu-4600-daten-der-who-zeigen-dramatisches-wachstum-schwerer-erkrankungen-nach-covid-19-shot-first-systematic-evaluation-of-who-database/amp/>

¹⁰⁸ Ismail II et al. (2021) A systematic review of cases of CNS demyelination following COVID-19 vaccination. *J Neuroimmunol.* 2022 Jan 15;362:577765. doi: 10.1016/j.jneuroim.2021.577765. Epub 2021 Nov 9. PMID: 34839149; PMCID: PMC8577051.

Another neurological problem that has been reported in connection with mod-mRNA injection (Comirnaty and Spikevax) is idiopathic facial palsy (Bell's palsy, BP). It is a sudden onset of facial paralysis or paresis resulting from inflammation of the facial nerve without a disease of the central nervous system. Here, too, autoimmune mechanisms and/or microcirculatory disorders are likely to be the cause. The symptoms can last for months.

Other GIT patients, especially younger ones, express symptoms similar to polyneuropathy. In addition to reflex status, testing of sensory and motor functions, nerve conduction velocity is revealing. Occasionally, the picture of small fiber neuropathy (SFN) appears. Here, the suspected diagnosis or the differential diagnosis to other triggering factors can be clarified by punch biopsy.

In the context of neurological examination, lumbar cerebrospinal fluid puncture with the acquisition of cerebrospinal fluid cells would be particularly useful in patients with central nervous system symptoms. CSF cytology with immuno-histochemical spike detection would be innovative and informative terms of differential diagnosis. The detection of spike protein in CSF cells without the presence of viral capsid antibodies in the serum would, as in the histological examination after biopsy of other tissues, prove damage caused by the mod-mRNA, whereby the lumbar puncture would be the much simpler procedure compared to a biopsy, especially since it could also be used to clarify other inflammatory changes in the CNS. This would be a further contribution to the differentiation between Post-GIT and Long-haul COVID and would also be instructive with regard to shedding diagnostics. Unfortunately, we do not yet have any information on whether and, if so, which cytological laboratories carry out immuno-histochemical spike detection. We would be very grateful for any hints from the readers.

5.4.3 Orthopedic Examination

In the case of peripheral osseous pain, joint discomfort, muscle pain, orthopedic clarification should be carried out as part of differential diagnostics. It is primarily about the exclusion of underlying orthopedic diseases and less about therapeutic measures such as "insole prescription".

5.4.4 Psychiatric Examination

The topic is difficult because, especially during initial medical contact, many patients with unclear symptoms of illness after the mod-mRNA injection are not taken seriously by the doctors they see. Consequences of an injection are generally denied by the doctors and a psychosomatic or mental illness is very quickly conjured up.

Accordingly, it can be difficult to determine actual mental illnesses in this context, although pre-existing depression, psychosis or familial mental illnesses could well play an important role. Social status would also have to be taken into account and the question of placebo effects or primary or secondary disease gain.

5.4.5 Ophthalmological Examination

Ophthalmoscopic examination can indicate spike-related changes in the vessels at a very early stage. As is well known, the fundus of the eye is the "mirror of the blood vessels". The changes may affect arteries and/or veins in mod-mRNA-treated individuals. Papillary edema and visual field loss have also been described.

Ophthalmological diagnostics are therefore very important in the early clarification of a suspicion of

damage after GIT or "vaccine damage", especially since there is a risk of blindness.¹⁰⁹

5.4.6 Ear Nose Throat Examination

In the context of GIT, increased cases of tinnitus have been reported¹¹⁰ and sudden deafness^{111,112}, possibly as a result of micro-perfusion disorders, thromboembolic processes or autoimmune reactions. In the case of corresponding symptoms, the ENT clarification is crucial, especially with regard to possible therapeutic measures.

5.4.7 IMPORTANT: Deceased Person with Suspected Harm from the mod-mRNA Injection

Since clarifying examinations of people who had died in temporal connection with the mod-mRNA injection or the vector vaccination had been rejected by the health authorities, and in some cases even prohibited, it is now all the more important that careful autopsies are carried out with targeted immunohistochemical spike or capsid antigen proof, as the connections are becoming more and more obvious.¹¹³

Since there is a possible connection between mod-mRNA injection and protein misfolding or destruction of prion proteins, a histological examination of the brain, peripheral plexus and myocardium for amyloid plaques after Congo Red staining should be performed.

6 Therapy

Knowing the pathological changes, we must assume a multifactorial event in post-GIT. It can be assumed that the spike protein, formed in the endothelial cells, triggers the inflammatory processes (endotheliitis) and is the starting point for many subsequent reactions and complaints.

Furthermore, it may be that reactions of the immune system, which previously did not know such changes, lead to symptoms. In addition, the work of the immune system is often not successful, as the spike protein is produced continuously, so that exhaustion or incorrect reactions of the immune system can occur.

It may be that reduced blood flow in individual parts of the body, in tissues or organs, including thrombosis or embolism, leads to symptoms. This can result in organ-typical dysregulation.

It is also possible that the new types of protein or amyloid deposits lead to symptoms and that these also push the body's own regulation to its limits. Yes, even prion mechanisms have been discussed and actually proven. In this context, it would be conceivable that cryoglobulins (abnormal proteins in the

¹⁰⁹ Li, J.X. et al. (2023) Risk assessment of retinal vascular occlusion after COVID-19 vaccination. *npj Vaccines* 8, 64 (2023). <https://doi.org/10.1038/s41541-023-00661-7>

¹¹⁰ Ahmed S.H. et al (2022) SARS-CoV-2 vaccine-associated-tinnitus: A review. *Ann Med Surg (Lond)*. 2022 Mar;75:103293. doi: 10.1016/j.amsu.2022.103293. epub 2022 Jan 25. PMID: 35096388; PMCID: PMC8788157.

¹¹¹ Nieminen T.A. et al. (2023) Sudden Hearing Loss Following Vaccination Against COVID-19. *JAMA Otolaryngol Head Neck Surg*. 2023 Feb 1;149(2):133-140. doi: 10.1001/jamaoto.2022.4154. PMID: 36520464; PMCID: PMC9857204.

¹¹² Yanir Y et al (2022) Association Between the BNT162b2 Messenger RNA COVID-19 Vaccine and the Risk of Sudden Sensorineural Hearing Loss. *JAMA Otolaryngol Head Neck Surg*. 2022 Apr 1;148(4):299-306. doi: 10.1001/jamaoto.2021.4278. PMID: 35201275; PMCID: PMC8874902.

¹¹³ Banoun H. et al. (2023) Why request an autopsy after the death of a person vaccinated with a messenger RNA "vaccine" against COVID-19? https://www.researchgate.net/publication/372365662_Why_request_an_autopsy_after_the_death_of_a_person_vaccinated_with_a_messenger_RNA_vaccine_against_COVID-19

blood that show precipitation phenomena when cooled) are formed, which then trigger Raynaud's symptoms (cold-induced feeling of cold, pain, abnormal sensations and color changes in the fingers).

As if this were not enough, additional problems can arise from the nano-lipids that surround the mod-mRNA as a protective shell. It is not clear what interactions they have with normal endogenous lipids, when and how they are degraded, and what effect they have in the long term.

And finally, studies of vaccine sera have also found so-called plasmids, which are DNA building blocks that originate from the production process of mod-mRNA and contain the blueprint for the spike protein. Whether inadequately cleaned or intentionally left remains to be seen. However, these DNA fragments can ultimately trigger transcription into mRNA and translation into spike protein.

The therapeutic approach is different depending on the stage in which the patient is. Therefore, we distinguish between therapeutic measures in the early and later stages.

6.1 Early Stage

In the early stage, i.e. in the short term after the injection of the mod-mRNA, the question arises: Could the vaccination reaction / immune reaction be stopped? The answer is no, at least at this stage of research.

Even if it were possible to produce a monoclonal antibody against spike protein, for example, in the short term, there would be hardly any change in the pathomechanisms involved. The immune system would intervene one "step" later with corresponding autoimmune effects.

At present, in this phase, the immune response can only be influenced by corticosteroids and possibly antihistamines and anti-inflammatory drugs. A healing therapy is therefore not possible.

The spike protein produced cannot be specifically removed from the body. Methods of apheresis may have delivered a certain subjective success in individual cases, but the logical link to the mechanism of action is missing. Most notably, how is spike protein to be reached outside the bloodstream in this way? In addition, spike production seems to be continuing for a long time.

In the early phase, there were considerations to limit the effects of spike production, for example by drug-based competitive displacement of the S1 Spike subunit from the ACE2 receptor. However, several randomized controlled clinical trials have shown that ACE inhibitors and angiotensin receptor blockers (ARB) can even worsen clinical symptoms. In this respect, their use is not advisable, especially since the autoimmune mechanisms are not receptor-dependent.^{114,115}

6.1.1 Degradation of mod-mRNA

The LNP-coated mod-mRNA fuses with the cell surface, the mRNA stabilized with N1-methyl-pseudouridine enters the cell and causes spike protein production. It can be assumed that it can also be distributed in the body via exosomes as mod-mRNA. Since it is stabilized by N1-methyl-pseudouridine, it is only degraded with a delay by the ubiquitously present RNases.

Theoretically, mod-mRNA shedding (4.1.5) via mucosal surfaces is conceivable.

It is unclear whether LNPs can be distributed by exosomes and whether this has a damaging effect. However, it can be assumed that the DNA plasmids detected as impurities in the "vaccine" can be distributed by exosomes.

¹¹⁴ Lee M.M.Y., McMurray J.J.V. (2023) Lack of benefit of renin-angiotensin system inhibitors in COVID-19. *JAMA*. 2023;329(14):1155-1156. doi:10.1001/jama.2023.4405

¹¹⁵ Writing Committee for the REMAP-CAP Investigators (2023) Effect of Angiotensin-Converting Enzyme Inhibitor and Angiotensin Receptor Blocker Initiation on Organ Support-Free Days in Patients Hospitalized With COVID-19: A Randomized Clinical Trial. *JAMA*. 2023;329(14):1183-1196. doi:10.1001/jama.2023.4480

Most research suggests that the mod-mRNA can persist in the body for a few weeks.¹¹⁶ The original statements of the manufacturers that the "vaccine" disappeared from the body after days were clearly false.

Although the degradation of the stabilized mod-mRNA is delayed, it ultimately follows the metabolic pathway of all nucleic acids. RNAses dissolve the ribose compounds. Monomers or oligomers are formed, which can usually be used for the re-synthesis of RNA. Whether "atypical" mono- or oligomers containing N1-methyl pseudouridine are formed and whether these are further utilized is not known and not investigated. When completely degraded, uric acid is produced as the end product. It is not possible to exert a direct influence to accelerate the degradation. Therapeutic approaches to this are currently lacking.

6.1.2 Removal of Lipid Nanoparticles (LNP)

A cationic lipid consists of 3 parts

- pole head (the charged part)
- greasy hydrophobic tail (the lipid part)
- bond connecting the two parts above (either an ester or an amide bond).

The body's own enzymes attack the ester or amide bond and break it down. The cationic lipid breaks down into a charged head and a lipid tail. The question is how quickly this degradation occurs. The reverse reaction of esterification is acid ester hydrolysis. After the ester cleavage of ALC-0315, the doubly de-esterified metabolite still has a cationic effect and is lipophilic ionizable. Further metabolism is carried out by glucuronidation and subsequent excretion in the urine. Nevertheless, larger amounts of ALC-0315 were still found in the liver two weeks after administration. SM-102 and its breakdown products are excreted more quickly through the kidneys and bile.¹¹⁷

It is now clear that the cationic lipids remain in the body for up to 6 weeks and cause damage during this time. In particular, degradation and excretion of ALC-0315 are delayed, with 60% of the initial dose being concentrated in the liver and organ damage is to be expected there.¹¹⁸ With this metabolic pathway, it should also be kept in mind that other pollutants that generally have a negative effect on enzyme activities, such as glyphosate, can have a synergistic effect.¹¹⁹

Direct removal of the LNP is probably not possible, as most LNP mRNA particles attach to a cell surface relatively quickly. Therefore, the approach of H.E.L.P. apheresis or lipoprotein apheresis does not correspond to the logic, especially since there are no specific absorbers for LNP.¹²⁰

6.1.3 Spike and Thromboembolic Complications

Here, the clinically proven procedures are most likely to be used, low-dose ASA, possibly

¹¹⁶ Castruita, J.A.S. et al. (2023) SARS-CoV-2 spike mRNA vaccine sequences circulate in blood up to 28days after COVID-19 vaccination. *APMIS*. 2023 Mar;131(3):128-132. doi: 10.1111/apm.13294. epub 2023 Jan 29. PMID: 36647776; PMCID: PMC10107710.

¹¹⁷ Jørgensen A. M. et al. (2023) Biodegradable Cationic and Ionizable Cationic Lipids: A Roadmap for Safer Pharmaceutical Excipients <https://doi.org/10.1002/sml.202206968>

¹¹⁸ Yu J, Zhang H, et al. (2017) Metabolomics revealed the toxicity of cationic liposomes in HepG2 cells using UHPLC-Q-TOF/MS and multivariate data analysis. *Biomed Chromatogr*. doi: 10.1002/bmc.4036. epub 2017 Jul 17. PMID: 28664536.

¹¹⁹ Using the example of polyethylene glycol (PEG), an important component of LNP, the excretion of LNP can be addressed at least to some extent. After oral ingestion, excretion of unabsorbed PEG occurs predominantly via the faeces. Here, a shedding mechanism would be conceivable. After parenteral intake, elimination occurs mainly via urine. Low molecular weight PEGs are metabolized to low

¹²⁰ PRESS RELEASE OF THE MEDICAL SERVICE BUND Berlin/Essen, 27 April 2023 Treatment of long and post-COVID: No evidence of benefit of H.E.L.P. apheresis ("blood washing") and hyperbaric oxygen therapy

anticoagulation with the anticoagulants commonly used today.

The *Nattokinase* recommended by some colleagues in this context and the *Lumbrokinase*, which is supposedly established in China as a fibrinolytic, should be viewed rather critically. The recommendations for Nattokinase are based on one in vitro study¹²¹, according to which Nattokinase can cleave spike protein, but from which in vivo success cannot be reliably derived. In addition, the fibrinolytic activity of Nattokinase, actually a serine protease, is lower than that of the tissue-specific plasminogen activator (t-PA) or Urokinase or Streptokinase.

Ultimately, the question is whether orally administered nattokinase (362 amino acids) could achieve an effective level in the blood at all, or whether the protease is simply digested and used as mono- or oligopeptides. An injectable form is not currently available. In the case of intravenous use, as with Streptokinase, attention should be paid to allergic reactions. So far, there is no plausible explanation for an effect of nattokinase.

Similarly, the use of Bromelain, a cysteine protease derived from pineapple, should be considered in the same way.

There are no prospective clinical trials for VITT. Therapeutic recommendations are based on experience with HIT2 and non-heparin-induced autoimmune thrombotic thrombocytopenia. Heparin administration in VITT appears to worsen the problem, so anticoagulation with heparin or low molecular weight heparin (LMWH) should be avoided.

The therapy takes place mainly in the clinic. Intravenous immunoglobulin replacement therapy, IVIg is an important part of therapy, as in the case of congenital and acquired immunodeficiencies, with careful monitoring because of the risk of new clots during therapy. Otherwise, direct oral anticoagulation and/or parenteral direct thrombin inhibitors may be considered. ASA should be avoided for treatment. It is not effective in preventing platelet activation by HIT antibodies and can thus increase the risk of bleeding. Plasmapheresis is also used. For the family doctor, as a rule, the continuation of oral anticoagulation remains for a limited time (3 months).

6.1.4 Myocarditis, Endocarditis, Pericarditis, Infarction

Usually, the symptoms require treatment in the hospital. CRP apheresis appears to have a beneficial effect on infarction-scar formation. However, almost all of the underlying studies point to a conflict of interest on the part of the authors.^{122,123}

Regardless of this, infarction-specific treatment with coronary dilation or bypass surgery may be necessary.

6.1.5 Immuno-stimulation / Immuno-inhibition

A large part of the symptoms after the mod-mRNA injection seems to be the result of a pronounced exaggerated immune response. Immune stimulants are logically likely to intensify this symptomatology. Therefore, in the acute phase, immuno-suppressive substances such as glucocorticoids are more indicated. The use of immuno-stimulatory substances such as β -glucans in the acute phase after administration of the mod-mRNA is unlikely to make much sense. On the other hand, its use in the late phase can be considered.

¹²¹ Tanikawa, T. et al. (2022) Degradative Effect of Nattokinase on Spike Protein of SARS-CoV-2. *Molecules*. 2022 Aug 24;27(17):5405. doi: 10.3390/molecules27175405. PMID: 36080170; PMCID: PMC9458005.

¹²² The patient must live with reduced cardiac performance, take it easy. Long-term effects such as damage to the heart valves can only be detected by regular check-ups.

¹²³ Ries, W. et al. (2021) C-Reactive Protein Apheresis as Anti-inflammatory Therapy in Acute Myocardial Infarction: Results of the CAMI-1 Study. *Front Cardiovasc Med*. 2021 Mar 10;8:591714. doi: 10.3389/fcvm.2021.591714. PMID: 33778017; PMCID: PMC7988098.

6.2 Late Stage

A completely different approach emerges in the late phase after the mod-mRNA injection, i.e. after a period of about 4 - 6 weeks. The body will usually try to repair itself the damage manifested in the wake of the "vaccination".

It is necessary to support the body in the best possible way in the repair processes. It is important to consider the individual initial situation of the patient. An underweight patient who has continued to lose weight as part of the damage is to be treated differently than, for example, an overweight patient who may be afflicted with metabolic diseases. All in all, these can only be individual therapy attempts in which close medical care is recommended. Long-term support is essential.

In general, care must be taken to ensure that synergistic interactions with other pollutants (glyphosate, herbicides or pesticides) or with drugs are recorded and taken into account in the therapy. A topic that is currently receiving little attention.

6.2.1 Symptom-related Therapy

6.2.1.1 Endothelial damage

As long as spike production continues in the body, it is almost impossible for the body to repair the endothelial damage in the vessels. It does not matter whether the sustained spike protein production is due to repeated administration of the mod-mRNA (booster), the result of an incorporation of the genetic code for the spike into the genome after reverse transcription, or via plasmid impurities. If spike production continues, we can only hope that the body's own repair mechanisms will heal over long time.

Currently, there are no targeted therapeutic approaches.

In principle, the body is able to break down and renew the destroyed endothelia by autophagy (autophagocytosis), as in normal cell turnover, and, at least as far as micro-perfusion is concerned, to create new capillaries. In a healthy body, autophagy ensures a balance between the degradation of old cell components and the production of new cells or cell organelles.¹²⁴

Fasting or reduced food intake, especially reduced protein intake, stimulates autophagy. This may lead to an approach to accelerate the healing of endothelial damage, always taking into account the overall condition of the patient.

Spermidine, a biogenic polyamine, is found in whole grains or wheat germ, matured cheese, mushrooms, soy products and legumes, enhances autophagy and offers a therapeutic approach in this respect.¹²⁵ It is commercially available as a dietary supplement. Other substances also seem to have a beneficial influence here: flavonoids such as quercetin and other polyphenols such as resveratrol (both are dietary supplements), even coffee, and even metformin, a diabetes drug, can influence autophagy signaling.

In Post-GIT syndrome, in contrast to SARS-CoV2 infection or Long-haul COVID, the competitive blockade mechanisms of receptors such as ACE2 or neuropilin are likely to play a subordinate role, because the autoimmune process takes place primarily on the surfaces of the spike-producing cells, independent of the receptor. The use of *sartans* and *statins* should therefore be viewed rather critically. Their use would most likely be justified in the case of a mod-mRNA-induced increase in blood pressure. But even here, studies showed rather negative effects (6.1). The use of statins also carries the risk of muscle damage (rhabdomyolysis), which would be difficult to delineate in the context of the overall pain syndrome in post-vac patients.

¹²⁴ Kaufmann, A., Wollert, T. (2015) *Autophagocytosis: the multifunctional recycling system of the cell Research Report (imported)* - Max Planck Institute of Biochemistry.

¹²⁵ Hofer, S.J. et al. (2022) *Mechanisms of spermidine-induced autophagy and geroprotection. Nat Aging* **2**, 1112-1129 (2022). <https://doi.org/10.1038/s43587-022-00322-9>.

6.2.1.2 Disturbance of Microcirculation

As already discussed, many of the symptoms in Post-GIT patients are likely to be caused by microcirculatory disturbance. Even small-fiber neuropathy (SFN), a disease of the peripheral nervous system due to isolated or predominant damage to thinly myelinated A δ -fibers and / or unmyelinated C-fibers, appears to be primarily caused by micro-perfusion disorders and / or direct immune mechanisms.

When there is not enough oxygen available in the tissues, for example due to a micro-perfusion disorder, the cells produce a hypoxia-induced factor (HIF), which induces, among other things, the release of Vascular Endothelial Growth Factors (VEGF), a group of signaling molecules that promote vasculogenesis, i.e. the formation of vessels / capillaries. VEGF also promotes the production of nitric oxide (NO) in the vascular wall, which in turn leads to vasodilation and improvement of tissue blood flow, but also to a drop in blood pressure. The body thus reacts to the effects of endotheliitis. By the way, VEGF can be measured in serum, which makes it possible to estimate the approximate extent of micro-perfusion disorders.

In addition to the promotion of repair mechanisms through autophagy, measures that improve microcirculation can be considered. In a sufficiently agitated muscle, capillaries can re-form if necessary. Capillary training, such as intermittent hypoxia-hyperoxia therapy (iHHT), can be helpful here in the long term; also altitude training or training with a special mask. All this only makes sense if continuous production of Spike is excluded. And here, too, it is necessary to take into account the general condition of the patient. Excessive exercise often causes more harm than good.

Hyperbaric oxygen therapy (HBO) in the hyperbaric chamber offered by some centers may reduce ischemic reperfusion damage, but is unlikely to be helpful in Post-GIT syndrome, even considering the cost-benefit analysis.

Pentoxifylline, a xanthine derivative that allegedly improves the rheological properties of blood, is considered controversial, but is nevertheless recommended by some authors. However, there is no proof of its effectiveness.

6.2.1.3 Thromboembolic Complications in the Late Stage

Even in the late stages, anticoagulant drugs such as ASA may be useful for persistent thromboembolic complications. Their use has long been proven to improve blood flow and reduce coagulopathies. Whether long-term heparinization makes sense may have to be decided on a case-by-case basis, but it is generally not recommended. In VITT, anticoagulation is usually carried out orally for three months. For nattokinase, see [6.1.3](#)

6.2.1.4 Neurological Sequelae, Polyneuropathy (PNP)

Many complaints of by Post-GIT patients are polyneuropathic nature. The cause is unclear; whether microcirculatory disturbance or direct autoimmune processes are responsible as triggers, presumably both are the case. At least within histological diagnostics in living affected persons and post mortem immuno-histochemically spike protein could be detected in nerve cells.

Usually, vitamin B complex in high doses is used, although the effectiveness has not been proven. At least there is little risk of overdose. The B vitamins form a metabolic network. Therefore the complete complex can be used – apart from exceptional diagnoses such as pernicious anemia. An immediate improvement in PNP symptoms is not to be expected, but an acceleration of the recovery of affected neurons.

Small fiber neuropathy (SFN) is a special problem in Post-GIT patients because it has a particular impact on the quality of life. Painful paresthesias, often starting in the feet and hands, are typical,

abnormal sensations, tingling, pins and needles, disturbed sensation of cold and heat.¹²⁶ Classic painkillers have almost no response. One can try to interrupt the pain cycle with neural therapy or lidocaine patches on the pain site. A positive benefit-risk ratio for tricyclic antidepressants or calcium channel modulators such as gabapentin or pregabalin is without evidence. In particular, the side effects (drowsiness, drowsiness, confusion) must be taken into account, which partly coincide with the primary symptoms in Post-GIT (6.2.1.6). In addition, the substances can sometimes cause severe withdrawal symptoms.

In Bell's palsy, (BP) after mod-mRNA injection, the focus is on glucocorticoids. In most cases, spontaneous healing follows within months.

Treatment for Guillain-Barré syndrome and transverse myelitis is usually done in the clinic. Immunoglobulins are used therapeutically, including plasmapheresis. In transverse myelitis, improvement can be achieved by cortisone, sometimes in combination with antivirals or antibiotics.

6.2.1.5 Misfolded Proteins, Amyloid

As discussed in 4.2.4, Post-GIT syndrome leads to an increased deposition of misfolded proteins such as amyloid, especially in the central nervous system, but also in the myocardium, as histological studies have shown. There is currently no therapeutic approach.

There is currently no indication for the use of the overpriced drug Tafamidis, which is advertised by Pfizer in connection with transthyretin amyloidosis, in mod mRNA-related amyloidosis, especially since serious accidents or injuries have been registered under Tafamidis, mainly in connection with falls. A possible pathomechanism is not known. In addition, malignant tumors (mainly skin tumors) are observed more frequently.¹²⁷

Monoclonal beta-amyloid antibodies (e.g. Donanemab, approved in the USA) caused a reduction in amyloid plaques (surrogate markers), but at best only slightly improvement in symptoms in dementia or Alzheimer's disease.¹²⁸

The occasional claim that apheresis can wash out amyloid plaques is false. There are also no studies that prove that nattokinase, for example, could dissolve amyloid plaques.

The problem of misfolded proteins or destruction of prion proteins by spike antibodies after mod-mRNA injection may prove to be one of the most dramatic consequences of the so-called vaccination; the long-term consequences are not foreseeable.

6.2.1.6 Myalgic Encephalomyelitis / Chronic Fatigue, ME/CFS

ME/CFS is a chronic, complex disease that manifests throughout the system. The clinical picture has been known for a long time, but the pathomechanisms are still enigmatic.¹²⁹

ME/CFS has long-term effects on important body functions comparable to multiple sclerosis, rheumatoid arthritis or heart failure. The hallmark of ME/CFS is persistent and unexplained fatigue. Those affected are severely disrupted in their daily routine. After physical or mental exertion, the symptoms worsen significantly, while comparable stresses before the disease were easily tolerated. In addition to intense fatigue, many patients report concurrent pain symptoms, cognitive dysfunction and sleep disorders. Additional symptoms may include headache, sore throat, painful lymph nodes, muscle aches, joint pain, fever, mental health problems, allergies, and abdominal discomfort.

¹²⁶ Sachau, J., Enax-Krumova E. (2022) Small fiber neuropathies [Small fiber neuropathies]. *DGNeurology*. 2022;5(6):487-98. English. doi: 10.1007/s42451-022-00488-x. Epub 2022 Oct 13. PMID: PMC9559077.

¹²⁷ a-t-2020; 51: 67-8

¹²⁸ Pawlowski, M., Warnecke, T. (2022) Causal therapy of Alzheimer's disease: amyloid antibodies. *Internal Medicine* 63, 1000-1008.

¹²⁹ <https://www.cdc.gov/me-cfs/index.html>

Pathophysiology

It is now assumed that a large number of pathogens can trigger post-infectious symptoms that are similar to or corresponding to ME/CFS. These include both viral and bacterial pathogens such as Epstein-Barr virus, Coxiella Burnetti (Q fever), Ebola virus, SARS-CoV-1, SARS-CoV-2, influenza, Giardia and Borrelia.

What is new is the connection with mod-mRNA injection in the context of the so-called COVID vaccination. At present, we can only speculate about the pathomechanisms that take place. Multi-systemic inflammatory processes as a result of the body's own spike protein formation, autoimmune reactions, incorrect reactions of the immune system up to the deposition of misfolded proteins in the the central nervous system and in the periphery of the body, triggered by the spike protein formed in the body, antibodies formed against it and / or the lipid nanoparticles used are suspected. Immunological dysfunctions are likely, but have not yet been regularly detected. Occasionally, slightly increased titers of antinuclear antibodies, reduction of immunoglobulin subclasses, aberrations of mitogen-mediated lymphocyte proliferation, reduction of natural killer cell activity, disturbances in cytokine production and changes in T-cell metabolism were found. None of these results have been constant so far, and none of these changes can be applied to all CFS patients.

Treatment

There are no specific approved drugs to treat or cure ME/CFS. Some symptoms, especially sleep disorders and pain, can be improved by non-pharmacological therapies (such as sleep hygiene, massage, acupuncture, heat or cold packs) or herbal medications. All medications should be started at lower doses than usual and increased slowly. It was found that patients with ME/CFS are more sensitive to medication than the general population. Narcotics should be avoided.

Controlled therapeutic trials have demonstrated no significant benefit of acyclovir, fludrocortisone, galantamine, modafinil, and IV immunoglobulin for patients with ME/CFS, among others.

Post-Exertional Malaise (PEM)

Post-exertional malaise (PEM) is the worsening of symptoms after even minor physical, mental or emotional exertion. Sensory overload (light and sound) can also trigger PEM. Symptoms typically worsen 12 to 48 hours after activity or exposure and can last for days or even weeks.

Activity management, also known as *pacing*, can help balance rest and activity to avoid PEM flare-ups caused by exertion. To do this, patients must explore their individual limits of mental and physical activity and behave within these limits.

Sleep Disorders

Patients with ME/CFS usually sleep poorly and feel little refreshed after sleep in contrast to the situation before their illness. Common sleep complaints include difficulty falling asleep or staying asleep, extreme drowsiness, intense and vivid dreaming, restless legs, and nocturnal muscle cramps.

Melatonin medication can be used as a sleep aid. If this does not help, prescription sleep aids can be used, starting with the smallest dose and for the shortest possible duration of use.

Pain

People with ME/CFS often have deep-seated pain in muscles and joints, occasionally headaches (typically pressure-like) and skin pain when touched.

First, simple painkillers such as paracetamol, aspirin, or ibuprofen should be tried. Other pain management methods include stretching and movement therapies, gentle massages, warmth, and toning exercises.

Depression, Stress and Anxiety

Many patients with ME/CFS develop depression during their illness. These should be treated. Some patients may benefit from antidepressants or anti-anxiety medications. However, medications used to treat depression have side effects that can worsen ME/CFS symptoms, therefore, the use of psychotropic drugs should be restrained.

Relaxation techniques such as autogenic training, muscle relaxation according to Jacobson, MBSR (Mindfulness Based Stress Reduction), massages and exercise therapies such as stretching, yoga and tai chi can reduce stress and anxiety and promote well-being.

Dizziness, Orthostatic Complaints

In case of dizziness or orthostatic intolerance, it may be helpful to increase daily fluid and salt intake.

Memory and Concentration Problems

Occasionally, psychostimulants, typically used to treat attention-deficit / hyperactivity disorder (ADHD), are prescribed for concentration problems. Some patients with ME/CFS benefit from these and can improve concentration problems, while others can trigger a "push-and-crash" cycle and worsen symptoms. "Push-and-crash" cycles occur when patients try to do more than they would normally, only to experience a breakdown afterwards.

Diagnostic Distinction

According to a study from August 2023, there are indications that chronic fatigue syndrome in the context of post-vac disease can be differentiated from CFS/ME of other causes.¹³⁰ In the aforementioned study, this fatigue syndrome is therefore referred to as *post-acute COVID-19 vaccination syndrome (PACVS)*. Compared to mod mRNA "vaccinated" patients without symptoms, the serological vaccine response was significantly altered in PACVS, potentially allowing a distinction from the normal state after "vaccination" and other etiologies of CFS/ME. In particular, this would make it possible to differentiate from CFS/ME in long or post-COVID. There were increased angiotensin II type 1 receptor antibodies, decreased alpha-2B adrenergic receptor antibodies and increased IL-6. The conclusion is that PACVS can be considered a somatic syndrome that can be distinguished by diagnostic blood markers.

6.2.1.7 Musculoskeletal disorders

Post-vac-related inflammatory diseases of the musculoskeletal system have now been confirmed by studies. The symptoms are manifold and particularly affect the tendon insertions and muscles. Therapy is symptomatic, often protracted. Anti-inflammatory drugs and analgesics are usually not helpful. Heat / cold respond in individual cases, but usually only temporarily. In the hope that the body's own spike production will limit itself over time, time is seen as a healing factor. Careful training is advantageous in individual cases. See also [4.2.13](#)

6.2.2 General Therapeutics

6.2.2.1 Therapeutics for Strengthening

As for many chronic diseases, there are various basic programs for Post-GIT to improve body condition. Many of these therapies are empirical, partly come from homeopathy and have generally proven effective for physical weakness and weakness of the immune system. Often it is a targeted substitution with vitamins and micronutrients after appropriate laboratory tests. See also [6.2.3.2](#)

Vitamin C is often used, in high doses orally (1 to 2 grams daily), occasionally also intravenously (up to several grams daily). Caution in case of overdoses, because the risk of calcium oxalate stones in the urinary tract is increased! B vitamins are used after appropriate laboratory diagnostics, for example B12 or B1 (thiamine), or as a complex, phytopharmaceuticals such as milk thistle, dandelion, artichoke for elevated liver values, as well as magnesium, zinc and selenium, if deficiency symptoms are present here.

Vitamin D in combination with vitamins A and K has proven to stabilize the immune system.

Omega-3 fatty acids (3 grams per day) are considered important for stabilizing cell membranes and

130 Amelie Semmler et al. (2023) Chronic Fatigue and Dysautonomia following COVID-19 Vaccination Is Distinguished from Normal Vaccination Response by Altered Blood Markers, *Vaccines* 2023, 11, 1642. <https://doi.org/10.3390/vaccines11111642>

mitochondria, along with turmeric and ginger as an anti-inflammatory therapy, as well as so-called cofactors of the respiratory chain such as coenzyme Q10, biotin, creatine and carnitine. All these substances are freely available dietary supplements. However, they only should be used in consultation with the treating physician.

For the use of substances such as chlorine dioxide, we do not have valid results with regard to specific indication and dosage in GIT.^{131,132}

6.2.2.2 Support of the Intestinal Microbiome

The gut microbiome, especially the bifidobacteria and lactobacilli, have a significant and complex influence on our body's immune effectors. There is evidence that these important bacteria are negatively affected by mod-mRNA injection, most likely in combination with environmental toxins such as glyphosate, which not only in plants but also in our microbiome blocks the shikimate metabolic pathway through which phenylalanine, tryptophan and, indirectly, tyrosine formation occurs.¹³³ This can result in a deficiency of these essential amino acids with multiple effects up to reduced serotonin and melatonin production in the central nervous system.

Glyphosate and other substances contained in weed killers also destroy the delicate balance of our gut microbiome, which includes not only bacteria, but also fungi and viruses, by increasing the local pH in the gut. This can lead to an overgrowth of potentially pathogenic germs, which can damage the protective mechanisms of the intestinal wall, resulting in inflammatory bowel disease. Glyphosate harms our intestines and, above all, kills the types of bacteria we need most. These are the microorganisms that help us with everything from the digestion of food to the synthesis of substances that affect learning, memory and mood. When glyphosate and the mod-mRNA destroy endocommensals, pathogenic bacteria and pathogenic fungi thrive.¹³⁴

There is little knowledge about the effects on our ectocommensals (the skin or mucosal microbiome).¹³⁵ However, it can be assumed that this system is also influenced by the mod-mRNA in combination with glyphosate.¹³⁶ Some unvaccinated people claim that COVID vaccinated people with whom they are in close contact "smell" differently since vaccination, which could be an indication of an altered skin microbiome.

Prebiotics (substrates selectively used by host microorganisms) provide a selective nutritional base for these bacteria and can specifically influence the composition of the intestinal microbiota and rebuild it. Probiotics, preparations containing living microorganisms such as lactobacilli (functional food), can also be used.

A sensible diet, preferably without industrially produced ready-made products, preferably pesticide-free, fiber-rich food, raw vegetables, fermented vegetables such as raw sauerkraut, kimchi et cetera, natural yoghurt and β -glucan carriers such as mushrooms or oatmeal support the intestinal microbiome and thus contribute to healing.

¹³¹ Arellano-Gutiérrez G. et al. (2021) Intestinal perforation associated with chlorine dioxide ingestion: an adult chronic consumer during COVID-19 pandemic. *Clin J Gastroenterol.* 2021 Dec;14(6):1655-60. doi: 10.1007/s12328-021-01527-y

¹³² Burke, D. et al. (2014) Acute Hemolysis Following an Overdose of Miracle Mineral Solution in a Patient With Normal Glucose-6-Phosphate Dehydrogenase Levels. *Chest.* 2014;146(4_MeetingAbstracts):273A; <https://doi.org/10.1378/chest.1988668>

¹³³ Stephanie Seneff GLYPHOSATE, DEUTERIUM AND COVID-19 March 16, 2021

¹³⁴ See also slides for presentation: COVID-19, Glyphosate, Deuterium and SARS-CoV-2 Vaccines; https://people.csail.mit.edu/seneff/2021/Laszlo_August_2021.pdf.

¹³⁵ Schommer N., Gallo R. (2013) Structure and function of the human skin microbiome; doi: <https://doi.org/10.1016/j.tim.2013.10.001>

¹³⁶ Puigbò P, et al. (2022) Does Glyphosate Affect the Human Microbiota? *Life (Basel).* 2022 May 9;12(5):707. doi: 10.3390/life12050707. PMID: 35629374; PMCID: PMC9145961.

6.2.2.3 Nutrition

The quality of nutrition has declined significantly in industrialized countries in recent years. In many households, mainly ready-made products or industrially produced food are used instead of freshly prepared, fiber-rich and vitamin-rich foods. This can be seen, among other things, in the increasing body weight of the population, as well as in the deterioration of the immune reactions against infectious diseases.

The increasing contamination of our nutrients with herbicides such as glyphosate and other pesticide residues seems to have a particularly dramatic effect here, as these substances permanently disrupt the intestinal microbiome.¹³⁷

For the post-GIT patient, a low-carb and ketogenic diet seems to be particularly effective as a temporary, but not a permanent measure, as it does for cancer, as it has a positive effect on the immune system, keeps calorie intake low, and is also rich in vitamins and micronutrients.¹³⁸ At the same time, the gut microbiome is stabilized, which has proven to be beneficial in healing Post-GIT damage. It is important to make sure that only foods are used that are not contaminated.

In our opinion, special forms of nutrition such as vegan diets, gluten-free diets et cetera make little sense for Post-GIT patients, especially since these patients almost always have deficiency symptoms of important vitamins and micronutrients. In this sense, recommendations suggesting a gluten-free diet with the predominant use of spelt instead of wheat seem downright paradoxical, disregarding the fact that spelt is the grain with the highest gluten content.

6.2.3 Special Therapies

6.2.3.1 Immune Apheresis

The therapeutic idea of this expensive measure, which is usually to be paid by the patient himself, is to remove autoantibodies (AAB) from the blood after mod-mRNA administration. However, there are no specific absorbers for AAB. Thus, a non-specific flushing of immunoglobulins occurs, which can lead to a weakening of the general immune defense with an increase in susceptibility to infections. It can also be assumed that the production of AAB will not stop as a result. Therefore, the application must be assessed critically.

Apheresis with CytoSorb®, which is recommended at times, especially in severe COVID courses, but also in Long-haul COVID, which is intended to intercept cytokines from the blood, did not improve disease progression or mortality, but even increased mortality in patients with previous disease-related cardiac arrest.¹³⁹

6.2.3.2 Immune Stimulation or Immuno-modulation

Since in the chronic phase of Post-GIT syndrome there is often a weakening of the immune system due to permanent overload, stimulation of the system may be indicated.

In addition to a healthy diet (6.2.2.3), β -glucans, for example, are recommended, which, with their 1,3- and 1,6-glycosidic bonds, function as Pathogen Associated Molecular Patterns (PAMPs) and are recognized by the Pattern Recognition Receptors (PRRs) of the innate immune system. As a result, the immune system is put on alert in a non-specific manner. Infections, etc., can thus be averted more quickly. β -glucans are commercially available as dietary supplements, but are also found in mushrooms

¹³⁷ Stephanie Senef, *TOXIC LEGACY, How Weedkiller Glyphosate is Destroying our Health and the Environment*

¹³⁸ <http://keto-bei-krebs.de/wp-content/uploads/2012/09/InfoBroschuereKetogen1011.pdf>

¹³⁹ Becker, S. et al. (2023) Efficacy of CytoSorb®: a systematic review and meta-analysis. *Crit Care* 27, 215. <https://doi.org/10.1186/s13054-023-04492-9>

and oatmeal in larger quantities.

Polyphenols such as resveratrol and curcumin, antioxidant flavonoids such as quercetin, terpenoids (vitamins A, E and K), omega-3 fatty acids, some trace elements such as selenium, vitamin C, vitamin D and probiotics stabilizing the intestinal microbiome also have an immuno-stimulating effect.

6.2.3.3 Low-dose Naltrexone (LDN)

The opiate receptor antagonist naltrexone is said to have immuno-modulatory effects at low doses of 1-4.5 mg. There is some evidence that the substance inhibits inflammatory signaling pathways mediated via toll-like receptor-4, modulates macrophages and microglia, and inhibits T and B lymphocytes via as yet unknown pathways.

Individual positive effects in ME/CFS have been reported, in particular there seems to be a reduction in pain symptoms in Long-haul COVID or ME/CFS.

The studies so far have many limitations and do not allow any reliable conclusions. A specific study on efficacy in Post-GIT syndrome is not available until summer 2023. Despite the low dosage, patients reported personality changes caused by the substance. Therefore, this therapy is not recommended.

6.2.3.4 BC007

BC007 is an aptamer (short single-stranded DNA or RNA oligonucleotides, 25–70 bases) made of DNA that is said to be able to eliminate or block pathogenic autoantibodies (AAB) against G protein-coupled receptors (GPCRs) comparable to immuno-adsorption. It is in clinical tests and was developed primarily for the treatment of special forms of cardiomyopathy.

In the run-up to this, there were individual successes in ME/CFS. However, until August 2023, there are no clinical trials on therapeutic use in Post-GIT syndrome. Allegedly, these are being set up, but the information situation is vague. There are no data on possible side effects of the substance until August 2023. Most often, a case report from November 2021 is cited: Neutralization of autoantibodies targeting G protein-coupled receptors.¹⁴⁰

The substance is mainly advertised in self-help groups on the Internet. By reporting between the lines about miraculous cures of individual sufferers, one creates needs and hopes in advance that may not be able to be fulfilled.¹⁴¹

6.2.3.5 Psychotherapy

Since psychological stress plays a major role in the Post-GIT problem, especially the fear of long-term disability, job loss, social decline, among others, psychotherapeutic help can be very useful.

A therapist who excludes possible connection between symptoms and "vaccination", as it is probably often the case, is unsuitable in this case, as the therapist could even intensify the symptoms.

Finding a suitable therapist can be difficult. Assistance is provided, for example, by the therapist agency of the Association of **Mediziner und Wissenschaftler für Gesundheit, Freiheit und Demokratie**, e.V.: <https://www.mwgfd.org/therapeutenvermittlung/>

¹⁴⁰ Bettina Hohberger et al. (2021) Case Report: Neutralization of Autoantibodies Targeting G-Protein-Coupled Receptors Improves Capillary Impairment and Fatigue Symptoms After COVID-19 Infection,

¹⁴¹ https://irlstorfer.de/wp-content/uploads/2022/06/Information_AktuellerSachstand_BC007_MdBIrlstorfer_aktuell.pdf

6.3 Medical Care

6.3.1 Family Doctor

In most cases, the family doctor is the first contact for patients with Post-GIT symptoms. Even those colleagues who have "vaccinated" out of conviction should be aware that there is a large number of "vaccine induced damages", that there is a multifactorial clinical picture, and that the affected patients urgently need help. Even if the public health authorities still largely deny "vaccine damage", the patient has the right to be taken seriously.

Most patients with Post-GIT syndrome can be cared for long-term by their family doctor. Only in the initial phase can cooperation with special centers be useful. Currently (summer 2023), the existing centers in Germany are completely overcrowded. Waiting times of months to over a year are the rule.

This guide is primarily intended to help the family doctor.

6.3.2 Clinical Care

In many cases, clinical care of patients is necessary, particularly in the early phase of Post-GIT, especially when myocarditis, thromboembolic problems or autoimmune reactions create life-threatening situations.

7 Concluding Remarks

Data from the WHO database show dramatic increases in serious diseases as a result of genetic immunization trials, although it is not always clear what impact missed visits to the doctor during the lockdowns had on the numbers.¹⁴²

In any case, Post-Vac or Post-GIT syndrome has opened up a "new", extremely economical field of activity in medicine. In addition to the standard therapies for clear clinical symptoms, a variety of empirical medical methods are used, which sometimes subjectively bring an improvement, but in some cases are likely to be placebo effects, which in itself is not bad. In addition, there is a playground for charlatanry and pseudo-medical experiments. Particularly complex and cost-intensive procedures such as apheresis and hyperbaric oxygen therapy, which usually have to be paid for by the patient himself, are trying to gain a foothold in this market. None of these procedures brought a significant therapeutic breakthrough.

The human body can repair and heal a lot of damage on its own. It takes time to do so, possibly many months in the case of Post-GIT. As doctors, we can provide supportive help here, and the support also consists of encouraging those affected.¹⁴³

In view of the poor general study situation on mod-mRNA injection, clinical studies on the topic, in particular on the pathomechanisms and the resulting long-term effects, including possible therapies, are useful and urgently needed.

¹⁴² <https://sciencefiles.org/2023/05/04/bis-zu-4600-daten-der-who-zeigen-dramatisches-wachstum-schwerer-erkrankungen-nach-covid-19-shot-first-systematic-evaluation-of-who-database/amp/>

¹⁴³ Prof. Stefan Hockertz (2023) <https://www.bitchute.com/video/5sXqe7RbOGFR/>

7.1 Abuse of "Vaccine-injured" / Long-haul COVID sufferers.

Some examples are summarized below:

- In some cases, rip-offs are carried out by overpriced self-paid therapies, which are often traded under the hand as a miracle cure, without evidence
- Self-help groups collect data from those affected without informing patients about the use of the data
- Marketing of various medications via self-help groups, some without approval
- Sale and use of preparations not approved in Germany or Europe, such as DMSO, etc.
- Obscure mixed therapies bypassing the attending physician with increased risks
- Download options for so-called therapy primers carry dangerous risks, as they can be used to induce dangerous self-therapies
- Hashtag #nichtgenesen on Instagram: "400 camp beds in front of the Reichstag"; targeted cover letter to Post-GIV patients with a request for image and data submission; this could be Astroturfing¹⁴⁴
- Misuse of data within such actions is possible at any time (disclosure of data to employers, insurances; market analyses by the pharmaceutical industry, undercover studies)
- Presentation of "miracle cures" of individual patients before testing or approval of medicines, i.e. demand creation and market manipulation, e.g. BC007
- Disclosure of sensitive patient data to companies such as Pfizer, BioNTech, Moderna and others for research purposes without the patient's knowledge
- Justifying mod-mRNA injection retrospectively by rebranding Post-GIT to post-COVID or Long-haul COVID and negating vaccine damage (there is then only Post COVID)
- Market manipulation, patient manipulation by means of grassroots engagement¹⁴⁵, astroturfing, etc., in order to change of opinion and justification of vaccination, lockdown measures and enormous financial expenditure by the government

7.2 What options do we have as physicians to intervene here?

The aim of this guide is to show the treating physicians in particular the pathomechanisms of Post-GIT syndrome and to discuss the possibilities for targeted therapy. In the absence of suitable studies, we are at the very beginning in terms of knowledge. This text therefore needs to be developed consistently. It is hoped that the colleagues who started this will continue to contribute their experience to keep it up to date.

Here is a summary of the most important diagnostic measures:

- Careful basic examination with careful anamnesis also with regard to psychological aspects
- Symptom-related laboratory diagnostics, no comprehensive, wide-ranging laboratory tests, no fixation on individual borderline laboratory findings
- Avoid time-consuming technical examinations without a real indication, high error rate(!)
- Careful differential diagnosis, especially with regard to malignant diseases, familial diseases
- What self-medication / supplements does the patient take?
- Can drug interactions be present?
- Can other vaccinations be causally involved?
- Nutritional analysis, alcohol?
- Pay attention to social environment, family situation, professional situation
- Why was the vaccination done? Conviction? Pressure from outside?
- It is important to have educational discussions, information about possible data misuse in self-help

¹⁴⁴ political public relations and commercial advertising projects designed to give the impression of a spontaneous grassroots movement

¹⁴⁵ Grassroots engagement and grassroots campaigning have become increasingly important in recent years. Grassroots campaigning is the direct approach to interested parties in order to mobilize them for an issue or project. Grassroots campaigning is particularly effective on the web and in social media. There, new target groups can easily be reached and the commitment of members can be stimulated and supported.

groups (SHG), groups in social media

- Clarification of the sense or nonsense of certain therapeutic methods recommended by SHG; Prerequisite: You have to inform yourself about these methods and not just rely on medical journals
- Some of the Long-haul COVID cases are likely to have psychosocial causes, in the sense of a propaganda enhanced nocebo effect
- Primary and secondary disease gain should always be considered
- A nocebo effect is also likely to play a role in Post-GIT under certain conditions, for example, in people who have been "forced" to be vaccinated under pressure.
- No hasty fixation on the diagnosis of Long-haul COVID or Post-GIT, but the diagnosis first after careful anamnesis and diagnostics. Precise recording of the injections carried out as well as background of a possible COVID disease (symptoms? PCR test?)
- Post-GIT must always be ruled out first when someone has received the injection
- The phrase "This certainly has nothing to do with vaccination" should become obsolete.
- There are no diagnostic markers for post-GIV or Long-haul COVID, nor for ME/CFS
- It is astonishing, for example, that in some countries Long-haul COVID and ME/CFS seem not to exist, for example in Greece or Cuba (personal surveys), but mod-mRNA vaccine damage does

Many thanks to all colleagues involved, especially to Cornelia Morche, MD, Christfried Preußler, MD, and Wolfgang Wodarg, MD, for their contributions. In memoriam Arne Burkhardt.

Hans-Michael Hackenberg, MD, Sigmaringen, Germany August 2023

Mail: [orientierungshilfe\(at\)sandilu.de](mailto:orientierungshilfe(at)sandilu.de)

Learn more:

<https://www.hackenberg-hm.de/c-downloads/Viren-Angst-und-Corona-Hype.pdf> (German)

<https://www.wodarg.com> (German)

<https://doctors4covidethics.org> (English)

[Back to top](#)



This work is licensed under a **Creative Commons** (Attribution - Non-Commercial - No Derivative Works 4.0 International). You may distribute and reproduce it subject to the terms of the license