

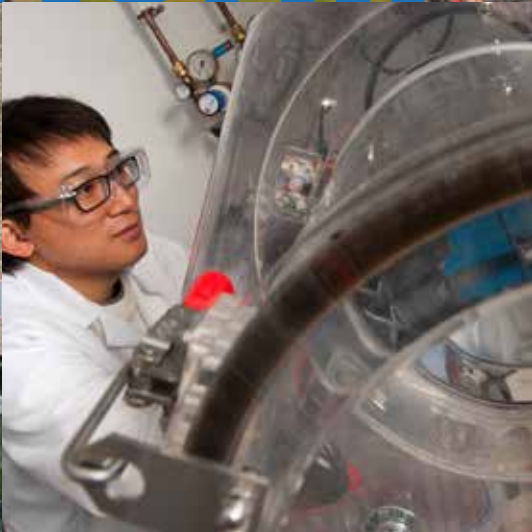
BEGBROKE SCIENCE PARK



WHERE SCIENCE AND INDUSTRY MEET



PARTNERSHIP





Welcome

to Oxford University Begbroke Science Park

We are the only science park that's wholly owned by Oxford University – the interface between start-ups, Oxford's world-leading scientific research programmes, and industrial research and process development. This makes us the location of choice, a natural base, for emerging hi-tech science businesses wanting to tap into University research to create competitive advantage and drive ground-breaking projects.

“

Begbroke Science Park provides Oxford University and high-technology companies with a unique, vibrant environment that encourages researchers and entrepreneurs to work closely together on new products and technologies. Companies benefit from the availability of leading facilities, while the University gets the chance to collaborate with some of the most innovative enterprises in the UK.

”

Professor Patrick Grant, Head of the Department of Materials, Oxford University Mathematical, Physical and Life Sciences Division

Successful partnerships have been flourishing at Begbroke since 1999 – today we're home to a growing number of businesses and research groups.

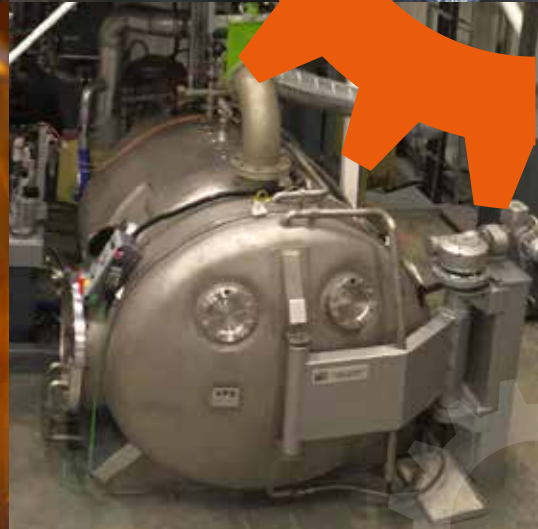
Entrepreneurs from University start-ups and spin-outs translate cutting-edge research into commercial opportunities, alongside other businesses and a vibrant mix of researchers. Research groups based here have industrial links or commercial clients and are dedicated to solving the challenges facing society in the 21st century.

Why choose Begbroke as your base?

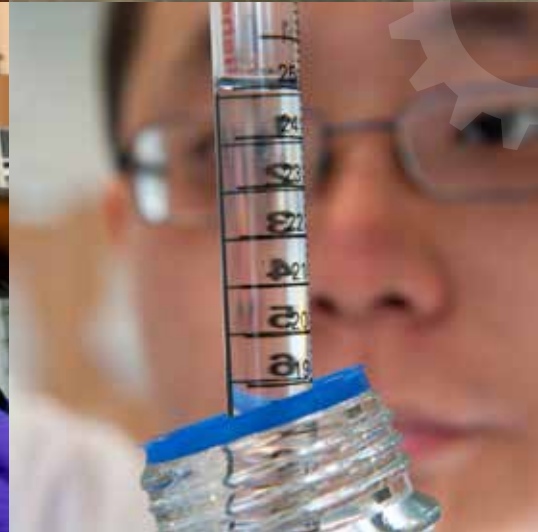
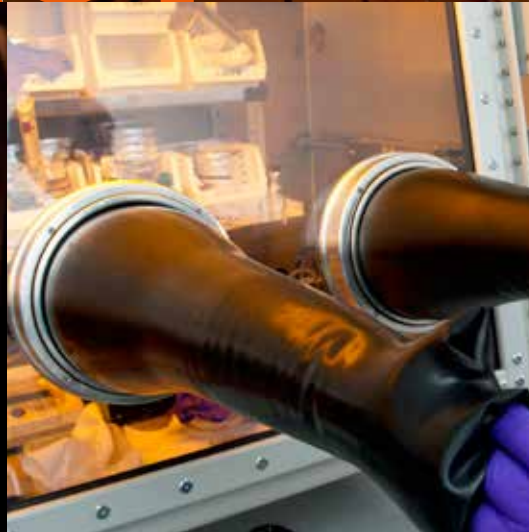
Our flexible, supportive approach to office and laboratory space is driven by the needs of your business. We listen, so we can provide everything you need to make the science possible.

- We're part of Oxford University and have unparalleled access to its research, resources, support, and specialist, state-of-the-art facilities.
- We understand scientific R&D and we design everything on site to support it.
- We're at the core of the county's innovation ecosystem and Oxfordshire's 'knowledge spine' – connecting you with the business and science community.
- Our vibrant on-site community inspires collaboration.
- We're easy to get to – just five miles from Oxford city centre.

To find out what Begbroke Science Park can do for you, call us on 01865 283700 to arrange a visit.



IMPACT





Innovation

and impact

Research that delivers real results

We can help you build the right relationships to tap into Oxford University's research, ranked number one in the UK for quality.* Research here isn't just about today's technology – it's also about shaping and defining the technologies of tomorrow: technologies that will truly transform the way society lives and works.

Begbroke-based University researchers actively seek out commercial involvement to make their work more relevant and to deliver results that have a real impact on the world. They've worked with leaders in the pharmaceutical, automotive, aerospace and engineering industries, F1 and motorsport companies, and many more – helping them develop competitive advantage in their field.

Begbroke's labs and workshop space enable cross-disciplinary research groups to tackle real global issues like sustainable energy, cheaper battery technologies, cleaner water and more effective cancer treatments. Bringing together scientific disciplines and adding a business dimension creates a collision of ideas that inspires new approaches to innovation.

We attract a broad spectrum of applied academic activity, with projects on site as diverse as solar research, the Impact Engineering Lab, and new techniques for testing graphene and carbon nanotubes.

“

Our facilities allow you to push the boundaries of technology through research and development.

”

* Research Excellence Framework 2014



Space

to evolve and grow

Flexible support services leave you free to focus on the science

As a research or science-based business, you have many requirements, which may change over time. That's why our office and laboratory space can be easily converted to meet your individual needs.

You might start in one room and, before you know it, you need a whole building. So we're flexible with our space and agreements, making it easy for you to evolve and grow. We're here to help you innovate, so if there's something you want to do differently, just ask.

We have a range of office space, alongside wet and dry laboratories, and we'll make everything straightforward for you from day one. We'll help you move in.

“

We can flex, add services, help you change direction and move at your pace.

”

We can manage everything from fitting out your space and organising furniture to putting you in touch with solicitors and other professional services.

Taking care of you on site

We'll help to keep your business running and your staff safe with all the support you'd expect – reception, office and security services, recycling, and safe storage and disposal of laboratory waste. You'll be well connected with superfast broadband and our ultramodern phone system. Our hospitality team will take care of your visitors as soon as they arrive.

There are showers to revive you after your morning cycle to work and communal spaces so you can chat and relax. Make yourself a coffee or a snack in the kitchen whenever you fancy, or choose to enjoy food freshly prepared for you in the restaurant.

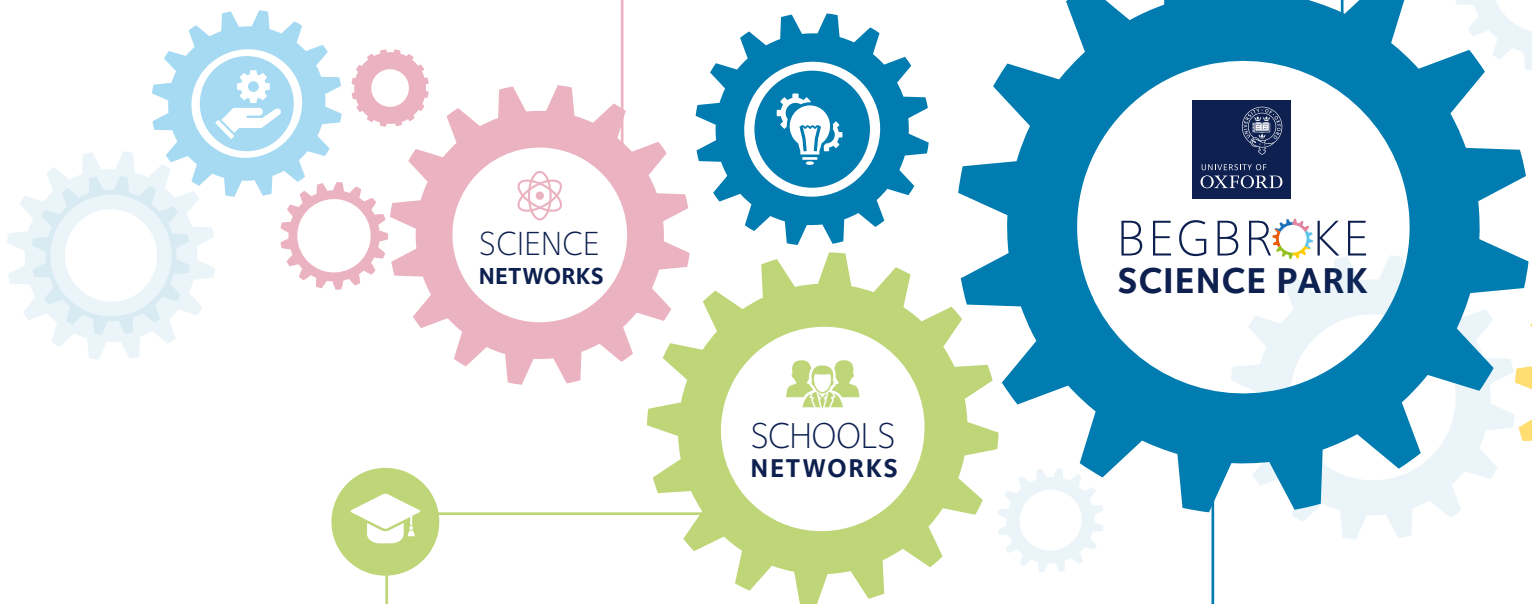
Reserve your space now - call us on 01865 283700 or email enquiries@begbroke.ox.ac.uk

WHERE SCIENCE AND INDUSTRY MEET



100+ COMPANIES
SUPPORTED
DEVELOPED
& GROWN
since we opened

OMCS OXFORD MATERIALS
CHARACTERISATION SERVICES
HAS OVER 1,000 CUSTOMERS
AND OVER **10,000**
COMPLETED CONTRACTS



OVER **50** 
TEACHERS TRAINED
IN NANOSCIENCE
BETWEEN 2013 and 2015


ANNUAL VALUE
OF RESEARCH WORK
AND **BUSINESS**
IN EXCESS OF
£30 million





85%
OF **TENANT**
COMPANIES
AND **ALUMNI**
ARE STILL IN
OXFORDSHIRE



BEGBROKE SCIENCE PARK
ALUMNI 
OXFORD NANOPORE
RAISED **£250 million**
IN R&D FUNDING
COMPANY VALUE \$3BN



**BUSINESS
NETWORKS**



**UNIVERSITY
NETWORKS**



**INTERNATIONAL
LINKS**



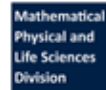
**INTERNATIONAL
VISITORS
FROM
30+
COUNTRIES**



VISITED BY 

**6 CABINET
MINISTERS**
THE DEPUTY PM
THE VICE PREMIER
OF CHINA
AND HRH
THE DUKE OF KENT

* within 12 months 2013-14



Your gateway to Oxford University's expertise

A central cog in the innovation network

Begbroke Science Park is fully embedded in Oxford's academic structure. This means that we can act as your gateway to the University's resources and expertise, and we can open doors to the people you need to know, to help your business grow.

As part of Begbroke Science Park, you'll be at the heart of an innovation ecosystem that supports entrepreneurial activity across Oxfordshire, giving you access to investors, inventors, professionals, academics and students.

As a University department, we seek out links and partnerships between businesses and the Oxford research base. The research groups at Begbroke include nanomaterials, advanced electron microscopy, photovoltaics, microbial environmental clean-up technology, engineering impact-testing and solar materials initiatives.

You'll benefit from our relationships with organisations across the University, who in turn can help you:

- Find technical and academic solutions for your business, through consultancy with academics;

- Set up research agreements or other University – business collaborations;
- Gain access to relevant University student projects, such as MBA projects or business client-focused research projects; or
- Find students who are graduating from Oxford with the skills and knowledge your business needs...and much more.

The University and its communities are a vibrant hub of entrepreneurial activity just waiting to be tapped, from Hackathons and student consultancy to investor events and Isis Innovation's Angels Network.

We're also well connected to the Oxfordshire innovation scene beyond the University, so we can introduce you to its business networks, support groups and professional advisers.

“

Whatever connection or partnership you're looking to build, we'll help you find the solution.

”







Testing facilities

Helping you compete on the global stage

Establishing your products' credibility and ensuring they perform consistently and reliably, means analysing and understanding materials. Maybe you have all the right technical skills but what if you don't have the kit you need? Imagine having a range of machines, each measuring different materials attributes. That's where Oxford Materials Characterisation Service (OMCS) can help. Part of Oxford University's Department of Materials, OMCS provides specialist services to industry, combining scientific expertise with a modern, well-maintained equipment base.

OMCS helps its customers understand materials-related issues in the lifetime of their product, from components and utilisation, to recycling and disposal. Their team works with both start-ups and multinationals, in many different sectors such as energy; automotive; aerospace; electronics; biomedical; structural materials; ecology and forensic science. You can book time on their equipment, call on their problem-solving skills for help with prototypes, and get quick, cost-effective, confidential materials analysis – giving you results you can rely on.



WORLD CLASS

You might be facing a particular challenge for the first time – but with hundreds of clients and thousands of contracts under their belts, OMCS' expert team has seen it before.

Other state-of-the-art technical services based at Begbroke include:

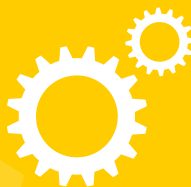
- Advanced Research Computing providing high-performance computing for research projects that are CPU intensive or need large amounts of memory;
- The Impact Engineering Laboratory – carrying out research in the aerospace, automotive and defence industries in areas such as high-velocity impact, crash-worthiness and underwater explosion; and
- The Advanced Materials Processing Laboratory – developing advanced materials and scale-up processes for manufacturing, in bespoke semi-industrial laboratories.

With financial incentives available to support small and medium enterprises from Oxfordshire's local economic partnership, world-class technical support like this is within reach of even the newest start-up.

“

Oxford Materials Characterisation Service has excellent facilities, a team of knowledgeable experts and a friendly attitude. ”

Dr Richard Heap, Faradion Limited – leading the way in high-energy density sodium-ion batteries



Space to meet

Helping you make the best first impression with your investors, suppliers and customers

Our professional meeting space combines the atmosphere of a world-leading university with access to the latest equipment and resources.

With a number of versatile rooms, we can accommodate up to 90 delegates while our spacious grounds offer scope for larger events of up to 200 guests. We can create whatever environment you choose, from ultra-modern to the elegance of our 17th-century farmhouse.

“

A friendly environment for networking – a diverse mix of business people and academics.

Robin Tyson, J A Kemp

”

Whether you're hosting an intimate meeting for five people or a full-scale product launch, our conference team will work with you to make your event a success. Our catering team provides freshly prepared food, from simple sandwiches to bespoke buffets, all made from locally sourced ingredients. And we'll take care of your guests on the day, so you can focus on getting your all-important presentation spot on.



Take a tour of the site and meet our team - call us on 01865 283700 or email enquiries@begbroke.ox.ac.uk



ENGAGE



©OUI/David Fisher



Park life

More than just a workplace, we're a collaborative working community

With around 500 people using the site, networking and making connections happens organically. Mixing up the different communities is our recipe for success. It's perfectly normal to find engineers working alongside cancer specialists, chemists rubbing shoulders with drug delivery experts, or spin-outs sharing equipment to save money when they start out. Shared passions and synergies breed an unusual state of interconnectedness.

Our networking events bring people together from across the site, the University and beyond – helping you make the contacts you need to develop your research and grow your business.

Lunchtime activities offer something for everyone, from the Begbroke Science Forum to a leisurely stroll. There's also the opportunity to play volleyball, Frisbee or table football, while our annual sports day brings out people's competitive nature (well, who doesn't want to win free ice-cream!)

Everything takes place against the backdrop of our grounds and walled garden, which are simply idyllic whether you're working hard or taking a few minutes to recharge your batteries.

Just five miles from Oxford city centre, you can reach us easily by car, bus or bike. Our regular minibus service connects you quickly and conveniently with the city and the University Science Area.

We're close to London Oxford airport and Oxford Parkway station, with direct trains to London Marylebone in less than an hour.

Located between Yarnton, Kidlington and Woodstock, you'll find handy facilities on our doorstep, including a nursery, bed and breakfast accommodation, award-winning pubs, and fitness and leisure activities.

“

A casual conversation on the bus or at a lunchtime barbeque could be the catalyst for a collaboration.

”





COMMUNITY





Reaching out

to our community and inspiring the next generation

A visit to Begbroke Science Park brings science and innovation to life. Through our schools events, we encourage the hi-tech entrepreneurs, technicians and engineers of the future.

We put science, technology, engineering and maths (STEM) subjects into a real-world context for students. We open their eyes to the wealth of opportunities in emerging technologies and help them identify career paths they might otherwise never have known existed. Events include: role-playing as an entrepreneur in our Innovation Showcase, the hands-on experiments of our Nanoscience Day, STEM

ambassador training, careers fairs and employability workshops. Our nanoscience skills training for teachers provides a glimpse of cutting-edge research, as well as resources and activities to take back to the classroom.

Schools events are just one way in which we connect with our local community. We also open our doors to our neighbours, to share news of developments at the Park. We're active members of our local business

community groups and we support business initiatives in the Cherwell district and across the county.

“

The children see classroom science as very one-dimensional – events like the Innovation Showcase allow them to see that it has a wide range of career applications.

”

Will Fosdike,
Wallingford School



GETTING HERE



Visit us - call us on 01865 283700 or email enquiries@begbroke.ox.ac.uk



UNIVERSITY OF
OXFORD



BEGBROKE SCIENCE PARK


Oxford University Begbroke Science Park
Woodstock Road

Begbroke
Oxfordshire
OX5 1PF

Telephone: 01865 283700

Email: enquiries@begbroke.ox.ac.uk

Web: www.begbroke.ox.ac.uk

 @BegbrokeScience