

State of Idaho.

Infrastructure Resource Guide 2016



Idaho Infrastructure Resource Guide

Table of Contents

Power

Electric Co-ops, Mutual and Municipalities within Idaho Map	3
Service Areas of Investor Owned Electric Utilities in Idaho Map	4
Idaho Power Directory	5-6

Telecommunications

Idaho Telephone Exchanges and Company Areas Map	7
Idaho Telephone Exchange Directory	8-9
Idaho Broadband Coverage	10

Airports

Idaho Aviation System Airports Map	11
Idaho Airport Directory	12-17

Highways

Idaho State Highway System Map	18
Idaho Highway Directory	19-21

Railroads

State of Idaho Railroad Location Map	22
Idaho Rail Directory	23

Higher Education

Idaho Higher Education Map	24
Idaho Higher Education Institutions Directory	25-27

Demographics

Idaho County Demographics	29-34
---------------------------	-------

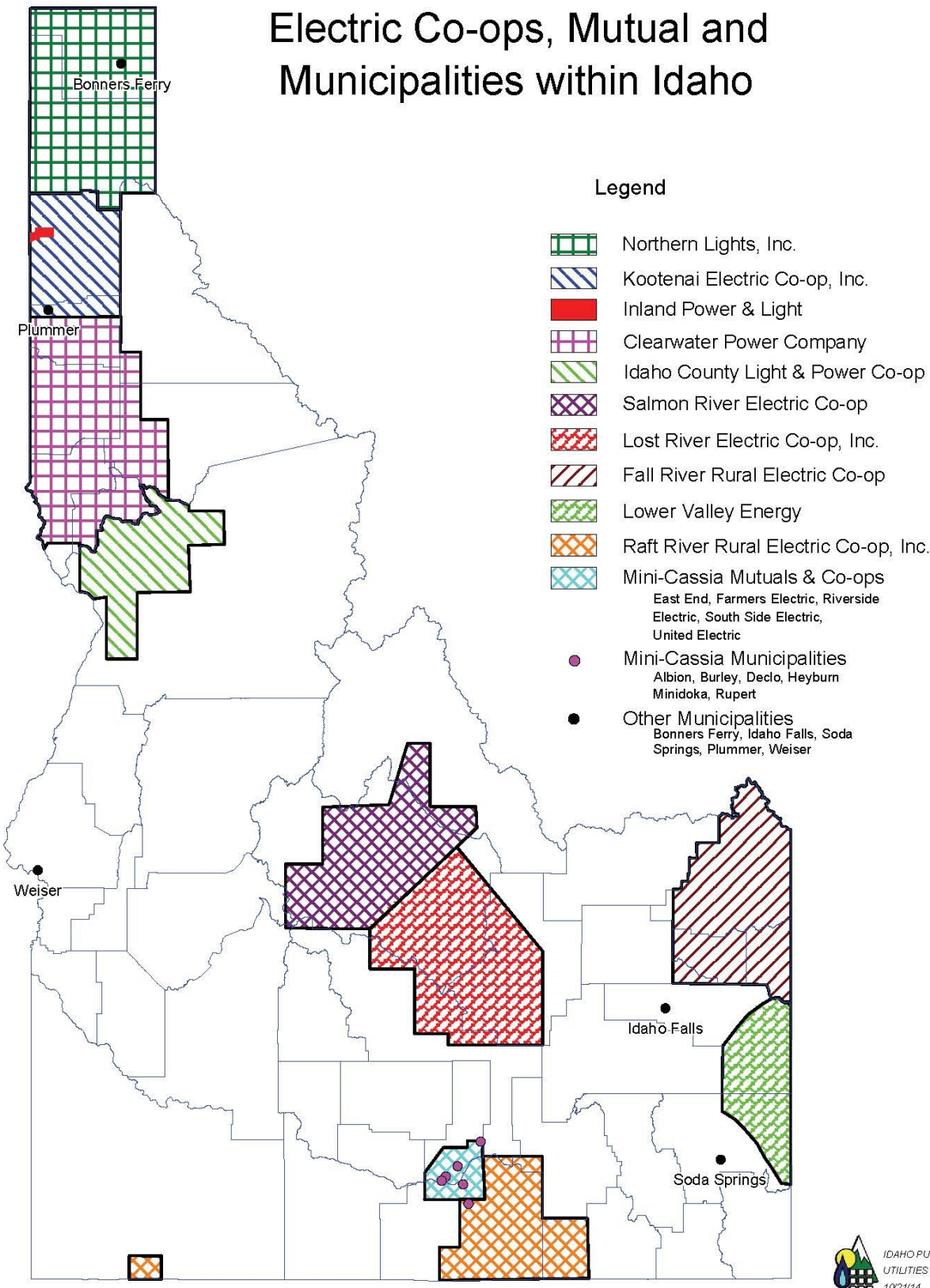
Economic Development

Economic Development Partners Map	35
Economic Development Partners Directory	36-41

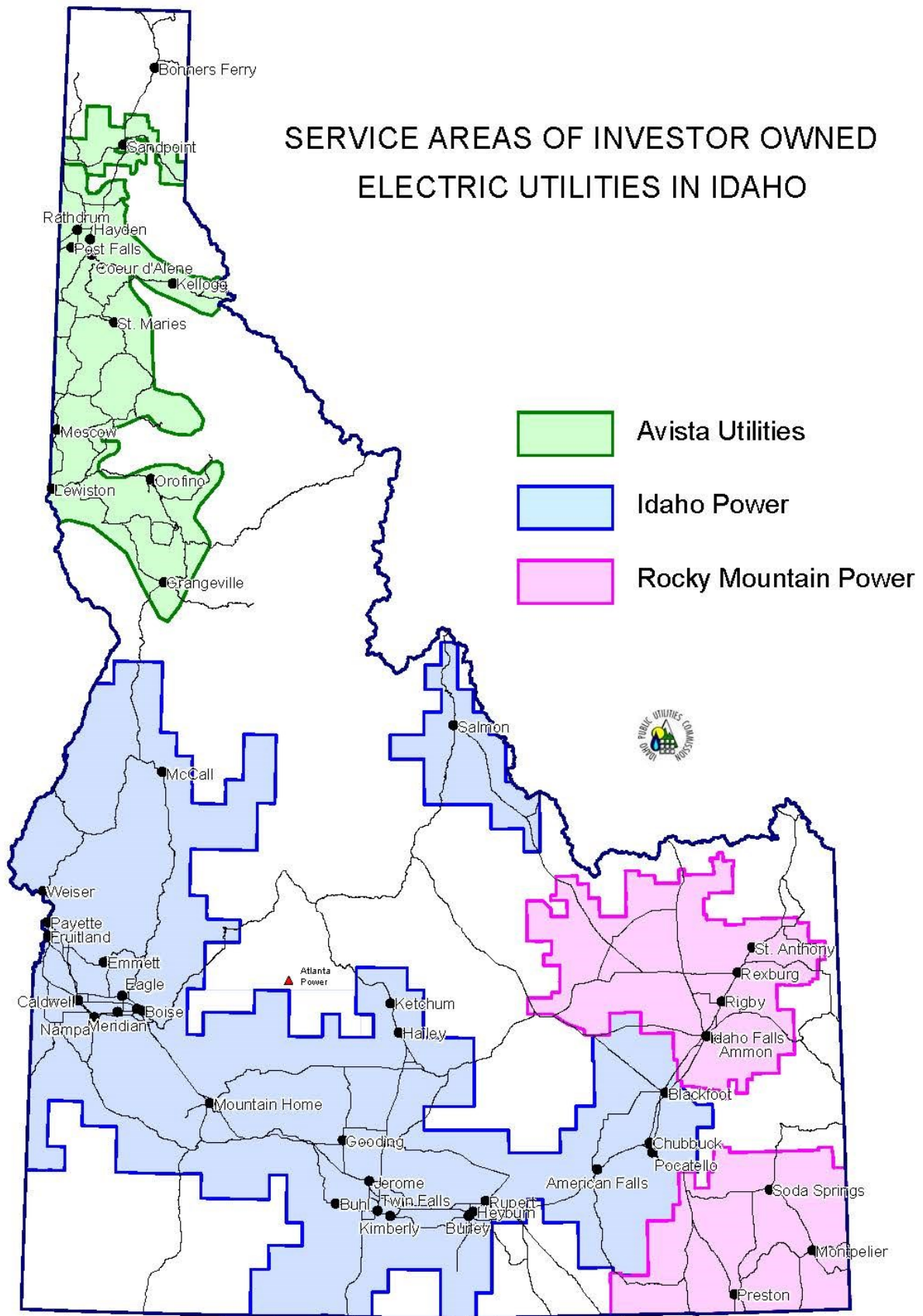
Other Maps

Idaho County Map	42
Idaho Relief Map	43
Idaho Topographical Map	44

Electric Co-ops, Mutual and Municipalities within Idaho



SERVICE AREAS OF INVESTOR OWNED ELECTRIC UTILITIES IN IDAHO



Idaho Power Directory

Investor Owned Electric Utilities

Avista Utilities P.O. Box 3727 Spokane, WA 99220-0001 800-227-9187 www.avistautilities.com askavista@avistacorp.com Area Served: Northern Idaho, including: Sandpoint, Post Falls, Coeur D'Alene, Moscow, Grangeville and Lewiston.	Rocky Mountain Power 201 South Main St. Suite 2300 Salt Lake City, UT 84111 866-870-3419 www.rockymountainpower.net (Spanish available) Area Served: Eastern Idaho including Rexburg, Idaho Falls, Ammon, Paris, and Preston.
Idaho Power 1221 W. Idaho St. Boise, ID 83702 800-488-6151, 208-388-2200 www.idahopower.com Area Served: South-central, southwest, and selected areas of southeast Idaho. Towns serviced include: Payette, Caldwell, Nampa, Boise, Meridian, Mountain Home, Jerome, Twin Falls, Rupert, Burley, Pocatello, Chubbuck, and Blackfoot.	

Electric Co-ops, Mutual Municipalities

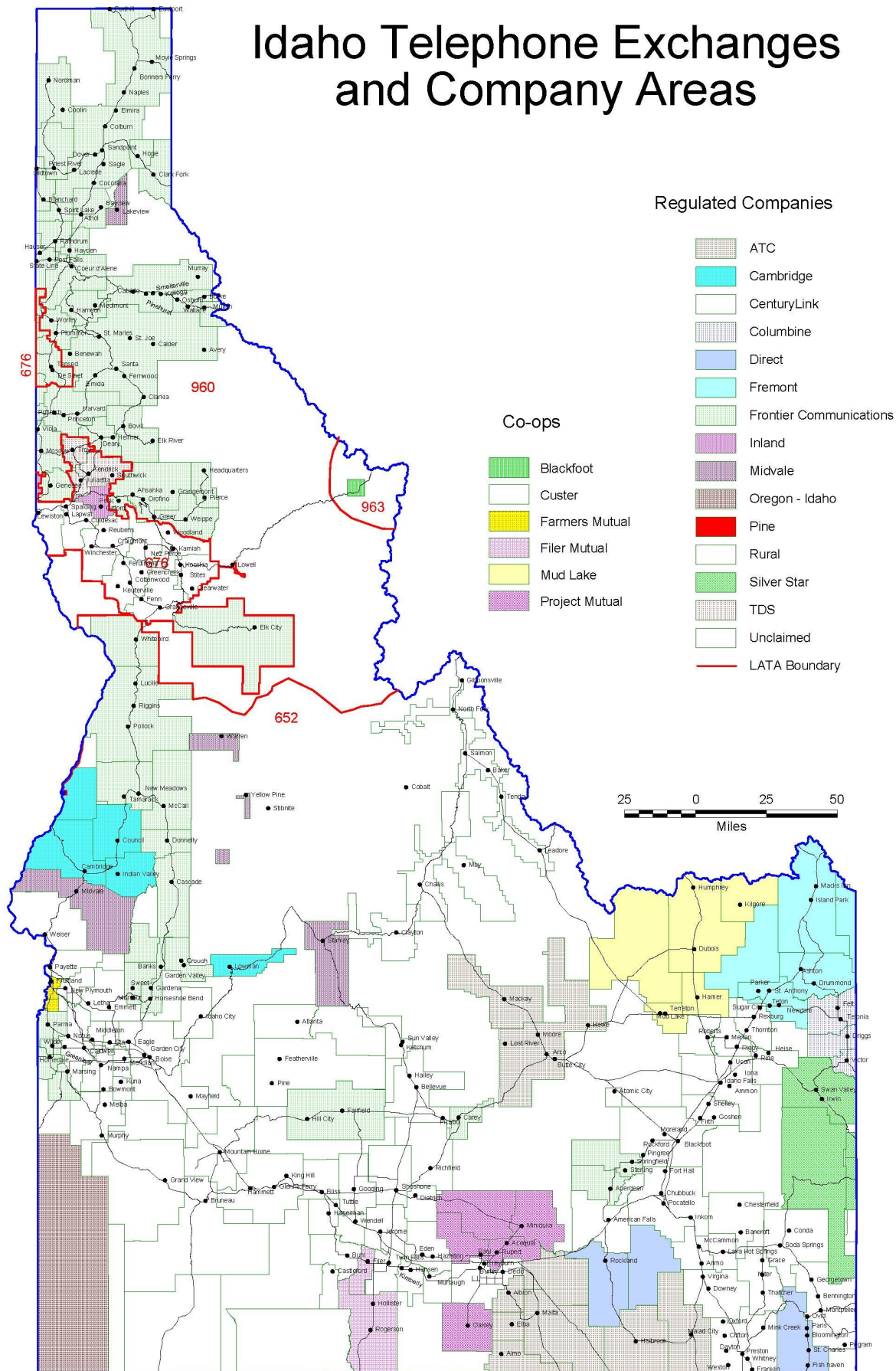
Northern Lights, Inc. PO Box 269 Sagle, ID 83860 800-326-9594, 208-263-5141 www.nli.coop info@nli.coop Area Served: Northern Idaho including Bonners Ferry	Clearwater Power Company 4230 Hatwai Road Lewiston, ID 83501 888-743-1501, 208-743-1501 www.clearwaterpower.com cpc@clearwaterpower.com Area Served: Northwest Idaho including Moscow and Lewiston
Kootenai Electric Co-op, Inc 2451 W Dakota Ave. Hayden, ID 83835 800-240-0459, 208-765-1200 www.kec.com kec@kec.com Area Served: Northwest Idaho including Plummer	Inland Power and Light 10110 W. Hallet Road Spokane, WA 99224 800-747-7151 www.inlandpower.com Area Served: Northwest Idaho

Idaho Power Directory

Electric Co-ops, Mutual Municipalities, continued

Idaho County Light and Power 1065 Hwy 13 Grangeville, ID 83530 877-212-0424 208-983-1610 www.iclp.coop iclp@iclp.coop Area Served: Northwest Idaho including Nezperce	Raft River Rural Electric Co-op, Inc. 155 N Main St Malta, ID 83346 After hours # only: 800-342-7732 208-645-2211 www.rrelectric.com Area Served: South-central Idaho including Albion
Salmon River Electric Co-op 1140 East Main Street Challis, ID 83226 208-879-2283 www.srec.org energy@srec.org Area Served: Central Idaho including Challis	Lost River Electric Co-op, Inc. PO Box 420 MacKay, ID 83251 208-588-3311 office@lrecoop.com Area Served: Central Idaho including Arco
Fall River Rural Electric Co-op 1150 N 3400 E Ashton, ID 83420 800-632-5726, 208-652-7431 www.fallriverelectric.com Area Served: Southeast Idaho including Driggs and Saint Anthony	Lower Valley Energy 4000 South Highway 89 Jackson, WY 83001 307-733-2446 www.lvenergy.com lvenergy@lvenergy.com Area Served: Southeast Idaho including Bonneville
Mini-Cassia Mutuals & Co-ops <i>East End</i> 208-436-9357 528 E St., Rupert, ID 83350 <i>Farmers Electric</i> 208-436-6384 285 W 290 Hwy 24 S, Rupert, ID 83350 <i>Riverside Electric</i> 208-436-3855 300 S 135 E, Rupert, ID 83350 <i>South Side Electric</i> 208-654-2313 12 Block S Hwy 77, Declo, ID 83323 <i>United Electric</i> 208-679-2222 1330 21st Street, Heyburn, ID 83336	Mini-Cassia Municipalities Albion 208-673-5351 Burley 208-678-2538 Declo 208-654-2124 Heyburn 208-678-8158 Rupert 208-436-9608 Other Municipalities Bonners Ferry 208-267-3105 Idaho Falls 208-529-1435 Plummer 208-686-1386 Soda Springs 208-547-2600 Weiser 208-549-1965

Idaho Telephone Exchanges and Company Areas



Idaho Telephone Exchange

Co-op Companies

Blackfoot Telecommunications Group www.blackfoot.com 1221 North Russell St., Missoula, Montana 59808 New Business Customers Call: 406-541-5000 For Service on Existing Line Call: 800- 649-4108 Internet: Broadband service available up to 15Mbps downstream/1Mbps upstream	Farmers Mutual Telephone Company www.fmtc.com 319 SW 3rd Street, Fruitland, Idaho 83619 New Business Customers Call: 208-452-4241 For Service on Existing Line Call: 208-452-4241 Internet: DSL available up to 3 Mbps
Custer Telephone Cooperative, Inc. www.custertel.net PO Box 324, Challis, Idaho 83226 New Business Customers Call: 208-879-2281 For Service on Existing Line Call: 208-879-5100 Internet: DSL available up to 512 kbps upstream/1.5 Mbps downstream. Broadband available up to 5000 kbps downstream/1000 kbps upstream	Mud Lake Telephone www.mudlake.net email: mlt@mudlake.net 59 W. Main, Dubois, Idaho 83423 New Business Customers Call: 208-374-5401 For Service on Existing Line Call: 208-374-5401 Internet: DSL available up to 4 Mbps
Filer Mutual Telephone Company www.filertel.com 400 Main Street, Filer, Idaho 83328 New Business Customers Call: 208-326-4331 For Service on Existing Line Call: 208-326-3700 Internet: DSL available up to 12 Mbp s downstream/ 1 Mbps upstream	Project Mutual Telephone www.pmt.org email: pmt@pmt.org 308 Shoshone St . E. , Twin Falls, Idaho 83301 New Business Customers Call: Twin Falls 208-933-7151 Burley 208-878-7151 For Service on Existing Line Call: 800-322-4074

Local Telecommunications Companies

Direct Communications www.directcom.com 150 S. Main Street, Rockland, ID 83271 New Business Customers Call: 208-548-2345 For Service on Existing Line Call: 800-245-4329 Internet: 10 Mbps/1 Mbps	Frontier Communications www.frontier.com 201 Lenora St., McCall, ID 83638-3845 For Service on Existing Line Call: 800-634-6120 Internet: Broadband internet service available up to 12 Mbps upstream/ 512 kbps downstream
--	--

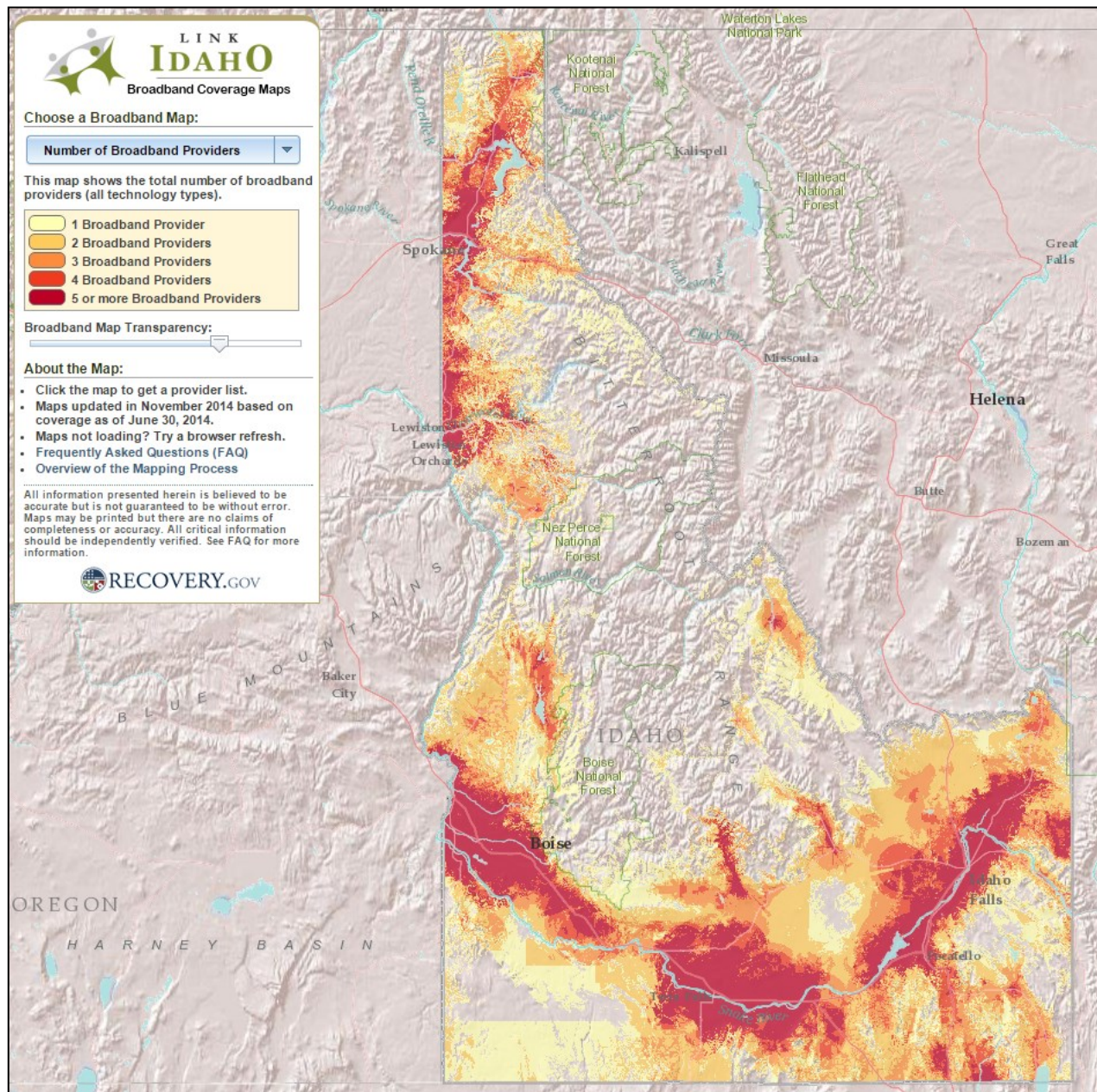
Idaho Telephone Exchange

Local Telecommunications Companies, continued

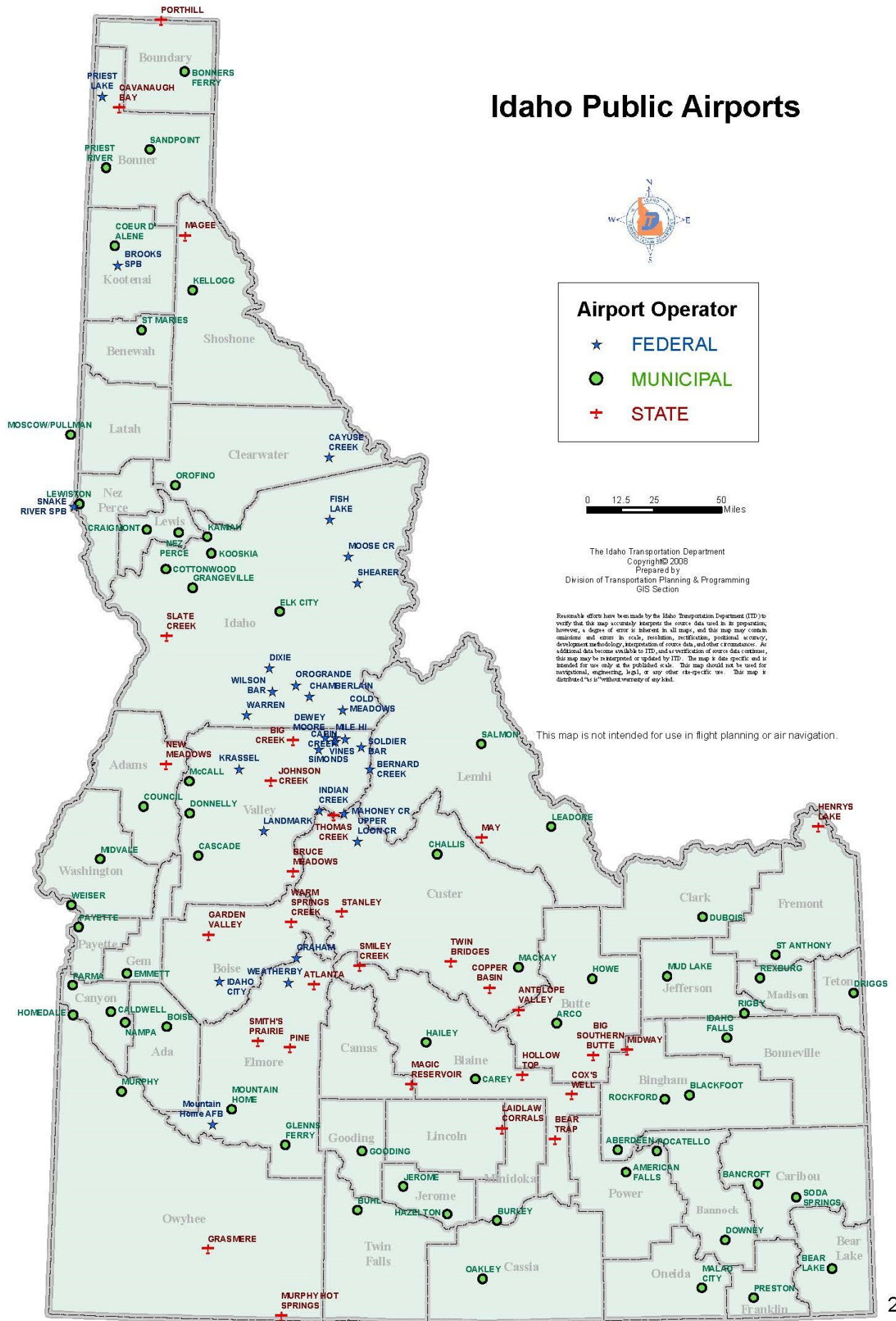
ATC Communications www.Atcnet.net 225 West North St., Albion, Idaho 83311 New Business Customers Call: 208-673-5335 For Service on Existing Line Call: 208-673-1100 Internet: DSL available up to 20 Mbps	Inland Networks www.inlandnetworks.com 103 South 2nd Street, Roslyn, Washington 98941 New Business Customers Call: 800-462-4578 For Service on Existing Line Call: 800-462-4578
Cambridge Telephone Company (CTC Telecom) www.ctcweb.net 130 Superior St., Cambridge, ID 83610 New Business Customers Call: 208-257-3314 For Service on Existing Line Call: 208-257-3314 Internet: DSL available up to 20 Mbps/2Mbps	Rural Telephone Company Website: www.rtc.net 892 W. Madison Ave., Glenns Ferry, Idaho 83623 New Business Customers Call: 208-366-2614 For Service on Existing Line Call: 888-366-7821
Fremont Communications www.fremontsolutions.com 110 E. Main St., St. Anthony, ID 83445 Business Customers Call: 208-625-7000 Residential Customers Call: 208-624-7300 Internet: Broadband service available up to 15 Mbps	Silver Star Communications (Columbine) www.silverstar.com Address: 570 S. Washington St. Afton, WY 83110 New Business Customers Call: 208-574-2500 For Service on Existing Line Call: 208-354-6200
MTE Communications www.mtecom.net Address: 2205 Keithley Cr. Road, Midvale, ID 83645 New Business Customers Call: 208-355-2211 For Service on Existing Line Call: 208-355-2211	TDS Telecom www.tds telecom.com New Business Customers Call: 866-448-0071 For Service on Existing Line Call: 866-571-6662 Internet: 25 Mbps up / 5 Mbps downstream
Oregon-Idaho Utilities, Inc. www.oiutelcom.net 1023 N Horton St., Nampa, ID 83651-1998 Business Customers Call: 800-624-0082 For Service on Existing Line Call: 800-624-0082 Internet: DSL available up to 512 kbps upstream/ 6Mbps downstream	CenturyLink www.centurylink.com 999 Main St., 11th Floor, Boise, Idaho 83702 New Business Customers Call: 1-877-720-3428 For Service on Existing Line Call: 1-877-348-9005 Internet: IGB/5Mbps, DSL and Broadband <i>CenturyLink is the third largest telecommunications provider - based on access lines - in the United States, with more than 45,000 employees. There are 340,000 access lines in Idaho and 1,180 Idaho employees</i> <i>Jim Schmit</i> <i>Vice President/General Manager Idaho Market</i> <i>(208) 385-2628</i>
Verizon Website: www.verizonwireless.com P.O. Box 96082, Bellevue, WA 98009-9682 New Business Customers Call: 877-297-7816 For Service on Existing Line Call: 800-621-9900	

Idaho Broadband Coverage

- Broadband Coverage Maps are available through Link Idaho at <http://map.link.idaho.gov/> (also displayed below)
- A National Broadband Availability map is available at <http://idaho.maps.arcgis.com/home/webmap/viewer.html?webmap=c87fa7ef245a43478df7536f2735448f>



Idaho Public Airports



Idaho Airport Directory

Primary Service

Commercial Service Airports that have more than 10,000 passengers a year

Airport	Location	Code	Charter Service?	Runway Length	Paved	Passenger Airlines Served	Cargo
Boise Air Terminal	Boise	BOI	Yes	10,000ft	Yes	Alaska Airlines Allegiant Delta/SkyWest Southwest United US Airways	FedEx UPS
Idaho Falls	Idaho Falls	IDA	Yes	9,000ft	Yes	Allegiant Air Delta/SkyWest Frontier United	-
Friedman Memorial	Hailey	SUN	Yes	6,600ft	Yes	Alaska Airlines Delta/SkyWest United	-
Lewiston-Nez Perce County	Lewiston	LWS	Yes	6,500ft	Yes	Alaska Airlines Delta/SkyWest	-
Pocatello Regional	Pocatello	PIH	Yes	9,000ft	Yes	Delta/SkyWest	-
Pullman-Moscow	Moscow	VOR	Yes	6,731ft	Yes	Alaska Airlines	-
Magic Valley Regional	Twin Falls	TWF	Yes	8,700ft	Yes	Delta/SkyWest	UPS Fedex

Idaho Airport Directory

General Aviation

Privately owned, public use airports that have 2,500 or more passengers annually and receive scheduled airline service

Airport	Location	Code	Runway Length	Paved?
Aberdeen Municipal	Aberdeen	U36	3,600 ft.	yes
Arco-Butte Co.	Arco	KAOC	6,600 ft.	yes
Bear Lake	Paris		5,700 ft.	yes
Blackfoot	Blackfoot	U02	4,300 ft.	yes
Bonnors Ferry	Bonnors Ferry		4,000 ft.	yes
Buhl	Buhl	U03	3,900 ft.	yes
Burley	Burley	BYI	4,000 ft.	yes
Cascade	Cascade	U70	4,300 ft.	yes
Challis	Challis	CHL	4,600 ft.	yes
Coeur d'Alene	Coeur d'Alene	COE	7,400 ft.	yes
Council	Council	U82	3,600 ft.	yes
Craigmont	Craigmont	S89	2,800 ft.	yes
Driggs	Driggs	U59	7,300 ft.	yes
Gooding	Gooding	GNG	4,700 ft.	yes
Grangeville	Grangeville	S80	5,100 ft.	yes
Homedale	Homedale	S66	2,900 ft.	yes
Jerome	Jerome	KJER	5,000 ft.	yes
Kamiah	Kamiah	S73	3,000 ft.	no
Kellogg	Kellogg	S83	5,500 ft.	yes
McCall	McCall	MYL	6,100 ft.	yes
Mountain Home AFB	Mountain Home	MUO	13,500 ft.	yes
Nampa	Nampa	S67	5,000 ft.	yes
Orofino	Orofino	S68	2,500 ft.	yes
Picabo	Picabo		3,000 ft.	no
Preston	Preston	U10	3,400 ft.	yes
Priest River	Priest River		2,900 ft.	yes
Rexburg	Rexburg	KRXE	4,200 ft.	yes
Sandpoint	Sandpoint	KSZT	5,500 ft.	yes
Salmon	Salmon	SMN	5,100 ft.	yes
St. Maries	St. Maries	S72	4,200 ft.	yes
Weiser	Weiser	S87	4,000 ft.	yes

Idaho Airport Directory

Reliever

Airports designed to relieve congestion at commercial service airports and provide improved aviation access to the community

Airport	Location	Code	Runway Length	Paved?
Caldwell Industrial	Caldwell	KEUL	5,500ft	Yes

Backcountry

Airports that poses higher than normal danger due to its runway surface, length, location and/or high altitude

Airport	Location	Code	Runway Length	Paved?
Cabin Creek	Big Creek Station	108	1,700 ft.	no
Chamberlain	Chamberlain	U79	4,100 ft.	no
Cold Meadows	Cold Meadows	U81	4,500 ft.	no
Dixie	Dixie		4,500 ft.	no
Fish Lake	Fish Lake	S92	2,600 ft.	no
Graham	Altanta	U45	2,900 ft.	no
Idaho City	Idaho City	U98	3,400 ft.	no
Indian Creek	Indian Creek	S81	4,600 ft.	no
Krassel	McCall		1,500 ft.	no
Mahoney Creek	Mahoney Creek		2,100 ft.	no
Moose Creek	Moose Creek		4,100 ft.	no
Priest River	Priest River		2,900 ft.	yes
Shearer	Shearer		2,000 ft.	no
Soldier Bar	Soldier Bar		1,600 ft.	no
Upper Loon Creek	Challis	Y72	2,500 ft.	no
Warren	Warren		2,700 ft.	no
Weatherby	Atlanta		2,200 ft.	no

Idaho Airport Directory

Community

Airports owned by local entity such as a city or municipality

Airport	Location	Code	Runway Length	Paved?
American Falls	American Falls	U01	4,900 ft.	yes
Bancroft	Bancroft	U51	3,200 ft.	no
Brooks SPB	Coeur d'Alene	S76	15,000 ft.	no
Carey	Carey	U65	2,600 ft.	no
Cottonwood	Cottonwood	S84	3,100 ft.	yes
Downey	Downey	U58	3,500 ft.	yes
Dubois	Dubois	U41	4,600 ft.	no
Elk City	Elk City	S90	2,600 ft.	no
Emmett	Emmett	S78	3,300 ft.	yes
Fairfield	Fairfield	U86	2,900 ft.	no
Glenns Ferry	Glenns Ferry	U89	3,000 ft.	yes
Hazelton	Hazelton	U94	2,800 ft.	yes
Howe	Howe	U97	3,800 ft.	no
Kooskia	Kooskia	S82	1,900 ft.	no
Leadore	Leadore	U00	3,500 ft.	yes
Mackay	Mackay	U62	4,400 ft.	yes
Malad City	Malad City	MLD	4,900 ft.	yes
Midvale	Midvale		3,200 ft.	no
Mud Lake	Mud Lake		3,300 ft.	yes
Murphy	Murphy		2,500 ft.	yes
Nez Perce	Nez Perce		2,400 ft.	yes
Oakley	Oakley		3,800 ft.	no
Parma	Parma		2,700 ft.	yes
Payette	Payette	S75	3,000 ft.	yes
Rigby	Ribgy	U56	3,500 ft.	yes
Rockford	Rockford		2,800 ft.	yes
Snake River SPB	SW of Lewiston	78U	3,000 ft.	no
Soda Springs	Soda Springs	U78	3,500 ft.	yes
St. Anthony	St. Anthony	U12	4,500 ft.	yes

Idaho Airport Directory

State Owned

Airports owned by the state and maintained by the division of aeronautics

Airport	Location	Code	Runway Length	Paved?
Antelope Valley	Grouse	U92	3,400 ft.	no
Atlanta	Atlanta		2,500 ft.	no
Bear Trap	Minidoka		2,200 ft.	no
Big Creek	Big Creek	U60	3,500 ft.	no
Big Southern Butte	Atomic City	U46	2,600 ft.	no
Bruce Meadows	Stanley	U63	5,000 ft.	no
Cavanaugh Bay	Coolin		3,100 ft.	no
Copper Basin	Mackay		4,700 ft.	yes
Cox's Well	Atomic City	U48	2,700 ft.	no
Garden Valley	Garden Valley	U88	3,800 ft.	no
Grasmere	Grasmere	U91	2,700 ft.	no
Henry's Lake	N of Island Park	U53	4,600 ft.	no
Hollow Top	S of Martin	OU7	2,500 ft.	no
Johnson Creek	Yellow Pine		3,400 ft.	no
Laidlaw Corrals	Kimama	U99	2,200 ft.	no
McGee	Coeur d'Alene	S77	2,400 ft.	no
Magic Reservoir	Hailey	U93	4,000 ft.	no
May	May		4,900 ft.	no
Midway	Atomic City	U37	3,800 ft.	no
Murphy Hot Springs	Three Creek		5,200 ft.	no
New Meadows	New Meadows		2,400 ft.	no
Pine	Pine		2,300 ft.	no
Porthill	Porthill		3,600 ft.	no
Slate Creek	Slate Creek		2,600 ft.	no
Smiley Creek	NW of Galena	U87	4,900 ft.	no
Smith Prairie	Prairie		5,400 ft.	no
Stanley	Stanley		4,300 ft.	no
Thomas Creek	Stanley		2,100 ft.	no
Twin Bridges	Ketchum	U61	4,400 ft.	no
Warm Springs Creek	E of Lowman	U01	2,850 ft.	no

Idaho Airport Directory

Wilderness

Airports owned by the US Forest Service physically located within the boundaries of designated wilderness areas

Airport	Location	Code	Runway Length	Paved?
Cayuse Creek	NE of Pierce		1,800 ft.	no
Dewey Moore	NE of McCall		700 ft.	no
Mile Hi	NE of Yellow Pine		560 ft.	no
Simonds	NE of Yellow Pine		900 ft.	no
Vines	SE of Warren		1,100 ft.	no

Idaho State Highway System

Interstate

US Highway

State Highway

County Boundary

0
50

Miles

The Idaho Transportation Department
Copyright © 2014
Prepared by
GIS Section

Reasonable efforts have been made by the Idaho Transportation Department (ITD) to verify that this map accurately represents the source data used in its preparation; however, a degree of error is inherent in all maps, and this map may contain omissions and errors in scale, resolution, rectification, positional accuracy, development methodology, interpretation of source data, and other circumstances. As additional data become available to ITD, and as verification of source data continues, this map may be reinterpreted or updated by ITD. The map is data specific and is intended for use only at the published scale. This map should not be used for navigational, engineering, legal, or any other site-specific use. This map is distributed "as is" without warranty of any kind.

Idaho Highway Directory

Interstate

Interstate 15	200 Miles in Length; Traverses through Pocatello, Blackfoot, and Idaho Falls
Interstate 84	Crosses through the southern portion of the state, through Boise and Twin Falls
Interstate 86	Stretches from I-84 in Heyburn to I-15 in Pocatello
Interstate 90	73 miles in length; Passes through the Idaho panhandle
Interstate 184	Connects I-84 travelers to downtown Boise

US Highways

US Highway 2	Intersects Idaho Route 57 in the town of Priest River, then intersects U.S. 95 in the town of Sandpoint
US Highway 12	Follows the Clearwater River from Lewiston to Orofino, continuing up the middle fork of the river to Lowell
US Highway 20	Crosses into Idaho from Oregon Northwest of Parma. Joins Route 95 to Caldwell
US Highway 26	From Wyoming proceeds to Idaho Falls and joins Interstate 15. Travels through Blackfoot, Bliss, and Mountain Home
US Highway 30	Enters Idaho from Oregon, travels through Fruitland, New Plymouth, Bliss, Twin Falls, Burley, Pocatello, and McCammon
US Highway 89	Partially circumnavigates Bear Lake
US Highway 91	Passes through Cache Valley, Pocatello, then follows the original route of the Yellowstone Park Highway until it reaches Idaho Falls
US Highway 93	Enters Idaho from Nevada north of Jackpot. Travels through Twin Falls, Shoshone, Arco, Challis, and Salmon
US Highway 95	Enters Idaho from Oregon through Weiser, proceeds north through Homedale to Coeur D'Alene

Idaho Highway Directory

State Highways

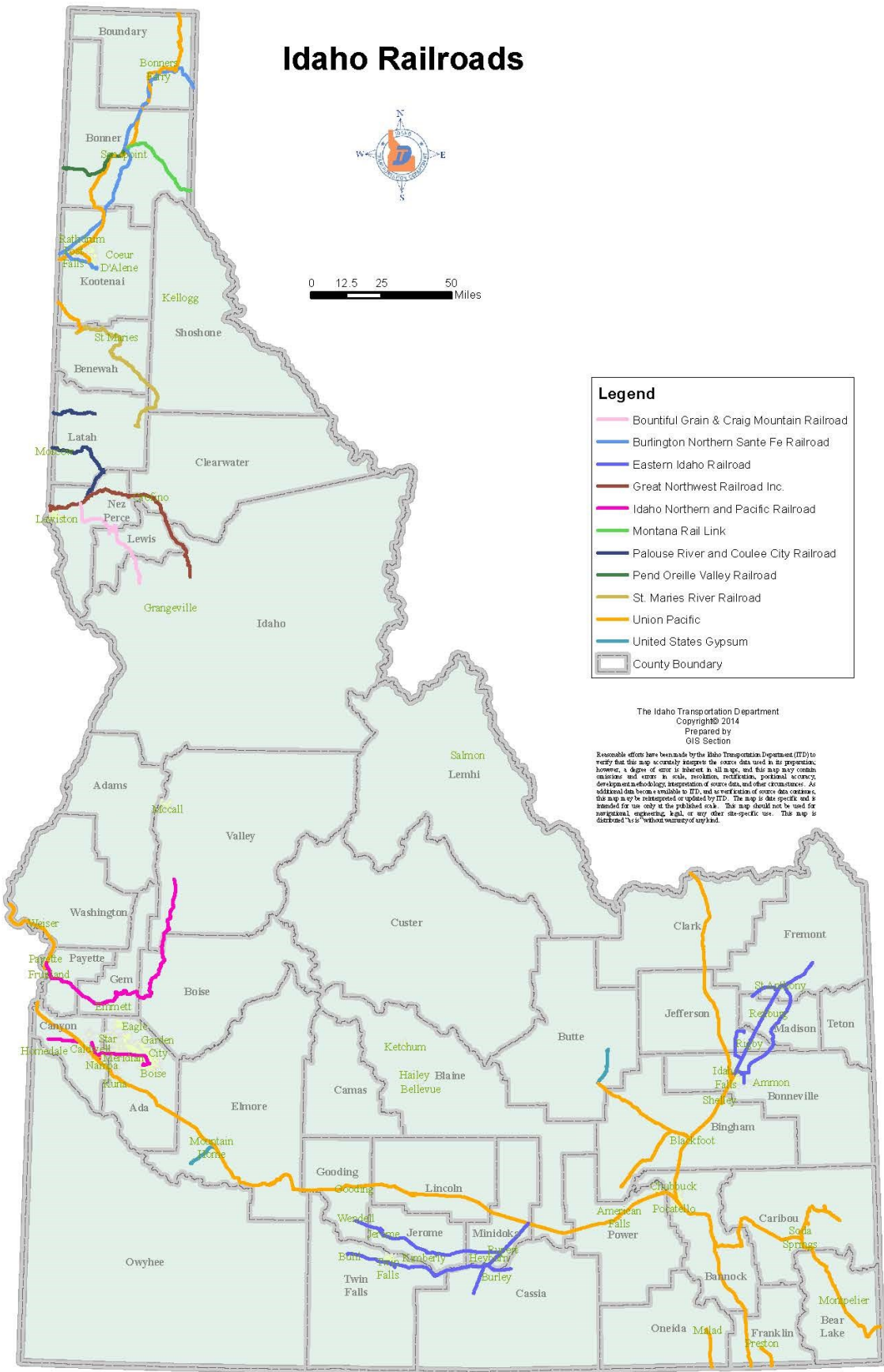
State Highway 1	Connects US-95 to the Canadian Border at Porthill	State Highway 29	From Leadore to the Montana border
State Highway 3	Runs from Nez Perce County to I-90 in Kootenai County	State Highway 31	Goes from Swan Valley to Victor, in eastern Idaho
State Highway 5	From Plummer to St. Maries	State Highway 32	In eastern Idaho, from Ashton to Teton
State Highway 6	Connects State Highway 3 to the Washington border near Potlatch	State Highway 33	Runs from Butte County to the Wyoming border
State Highway 7	Serves the communities of Orofino and Ahsahka	State Highway 34	Goes from Preston to the Wyoming border
State Highway 8	Runs from the Washington border at Moscow to Elk River	State Highway 36	Travels from Ovid through Preston to I-15
State Highway 9	Connects State Highway 6 at Princeton to State Highway 8 at Deary	State Highway 37	Connects Holbrook to I-86 at American Falls
State Highway 11	Through Weippe and Pierce in Clearwater County	State Highway 38	Runs from Holbrook to Malad City and I-15
State Highway 13	Runs from Kooskia to downtown Grangeville	State Highway 39	From Blackfoot to American Falls
State Highway 14	In Idaho County, connecting Grangeville to Elk City	State Highway 41	Runs from Post Falls to the Washington border
State Highway 16	Route from US Highway 20/26 to Emmett	State Highway 44	Cuts through the Treasure Valley from I-84 to Garden City
State Highway 19	Connects Caldwell to the Oregon border near Homedale	State Highway 45	Connects State Highway 78 to downtown Nampa
State Highway 21	Travels from the east end of Boise to Stanley	State Highway 46	Runs from Camas County to Wendell
State Highway 22	Goes through Dubois to Butte County, where it joins State Highway 33	State Highway 47	Travels from Fremont County to Ashton
State Highway 24	In south-central Idaho, from Burley to Shoshone	State Highway 48	A route from Roberts to Ririe
State Highway 25	Near I-84, from Jerome to the Declo area	State Highway 51	From Mountain Home to the Nevada border
State Highway 27	Connects Oakley to Burley and Paul	State Highway 52	Runs from Horseshoe Bend to the Oregon border at Payette
State Highway 28	Runs from Salmon to I-15	State Highway 53	Runs from Rathdrum to the Washington border

Idaho Highway Directory

State Highways

State Highway 54	Between Spirit Lake and Bayview	State Highway 71	Connects Cambridge to the Oregon border near Brownlee Dam
State Highway 55	From Marsing, runs east to Meridian, turns to New Meadows	State Highway 75	From Shoshone, through Sun Valley, to Challis
State Highway 57	From Priest River to Nordman	State Highway 77	Connects US Highway 30 to Malta
State Highway 58	Continuation of WA-278	State Highway 78	From Marsing to Hammett
State Highway 60	From US Highway 95 near Plummer to the Washington border	State Highway 81	From Malta to Burley
State Highway 62	Runs from Craigmont to Nezperce	State Highway 87	From US Highway 20, near Henrys Lake, to the Montana border
State Highway 64	Runs from Nezperce to Kamiah and US Highway 12	State Highway 97	From Harrison to I-90
State Highway 66	From US-95 near Viola to the Washington border	State Highway 99	From Troy to Kendrick
State Highway 67	Between Grandview and Mountain Home	State Highway 162	From Nezperce to Kamiah
State Highway 69	From Kuna to I-84 in Meridian	State Highway 200	Pend Oreille Scenic Byway, from Poderay to the Montana border

Idaho Railroads

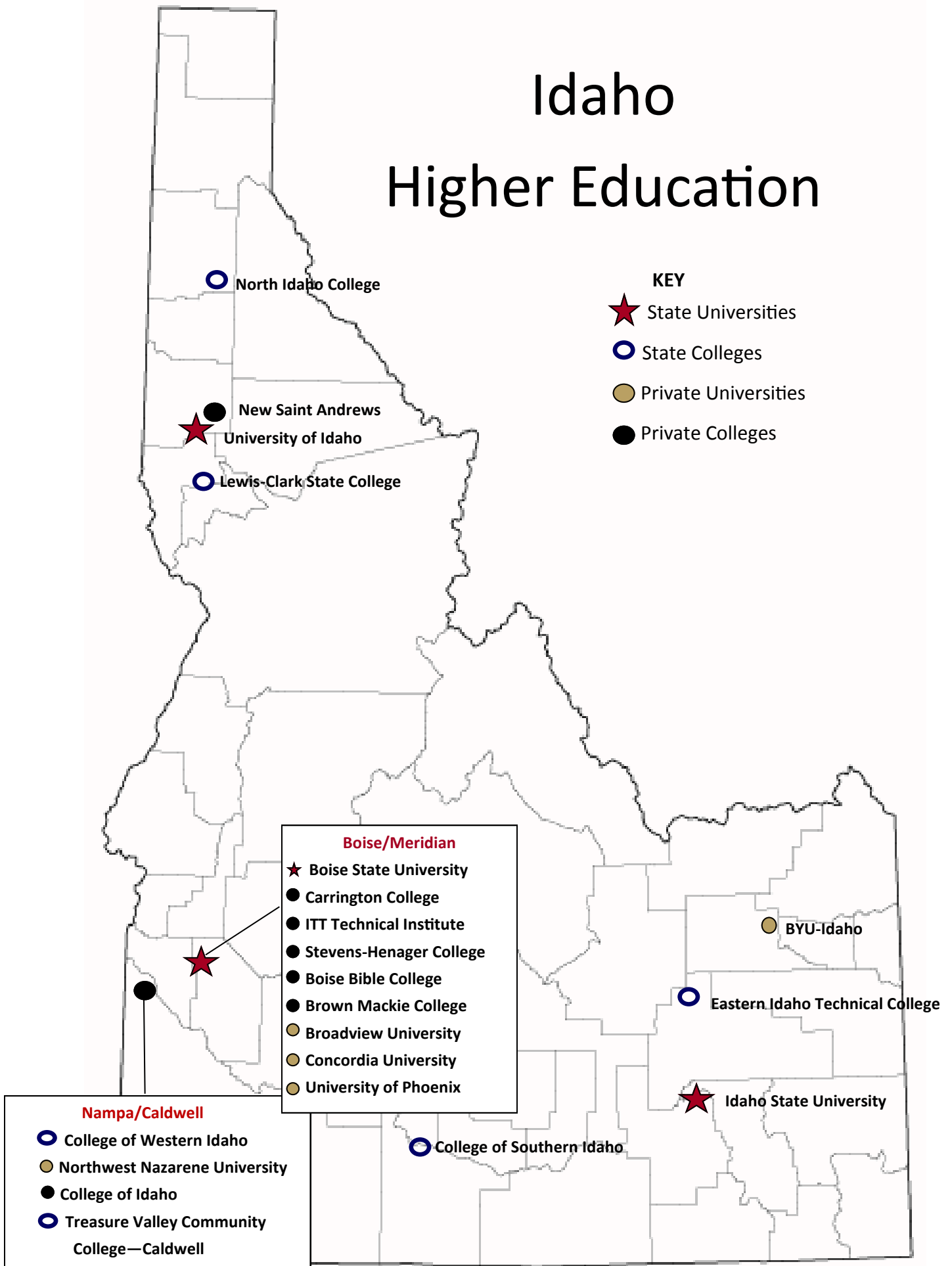


Idaho Rail Directory

Bountiful Grain & Craig Mountain (BG & CM) Contact: 816-470-7069 Rail Mileage: 52 miles Freight Service: yes Passenger Service: no Route: Through Lewiston to Spalding	Palouse River and Coulee City Railroad (PCC) Contact: 509-397-9014 Freight Service: yes Passenger Service: no Route: E/W, Through Princeton and Potlatch
BNSF Railway (BNSF) Contact: 800-832-5452 Rail Mileage: 194 miles Freight Service: yes Passenger Service: yes Route: E/W N/S, Through Sandpoint, Bonners Ferry and Kootenai	Pend Oreille Valley Railroad (POVA) Contact: 208-437-0324 Rail Mileage: 26 miles Freight Service: yes Passenger Service: yes Route: Old Town to Dover
Great Northwest Railroad (GNWR) Contact: 208-733-4686 ext.12 Rail Mileage: 77 miles Freight Service: yes Passenger Service: no Route: E/W From Lewiston through Orofino, leads west to Riparia, Washington	St. Maries River Railroad (STMA) Contact: 208-245-4531 Rail Mileage: 71 miles Freight Service: yes Passenger Service: no Route: Plummer to St. Maries to Bovill
Eastern Idaho Railroad (EIRR) Contact: 208-734-4644 Rail Mileage: 267 miles Freight Service: yes Passenger Service: no Route: E/W, N/S through Newdale, Menan, St. Anthony, and Ashton. Separate line through Buhl, Burley, Rupert, and Wendell	Union Pacific Railroad (UP) Contact: 888-877-7267 Rail Mileage: 848 miles Freight Service: yes Passenger Service: yes Route: E/W N/S, Through Boise, Shoshone, American Falls, Rigby. And N/S from Spokane to Eastport
Idaho Northern and Pacific Railroad (INPR) Contact: 208-365-6353 Rail Mileage: 102 miles Freight Service: yes Passenger Service: no Route: Lines through Fruitland, New Plymouth, Emmett, Horseshoe Bend, and Cascade	Montana Rail Link (MRL) Contact: 800-338-4750 Rail Mileage: 84 miles Freight Service: yes Passenger Service: no Route: E/W, Sandpoint to Spokane

Idaho

Higher Education



Idaho Higher Education

State Universities



BOISE STATE UNIVERSITY

Location: Boise
Student Population: 22,678
Majors: 185+
Average Class Size: 27
Faculty/Student Ratio: 1/20
Contact: 208-426-1156
Established: 1932
www.boisestate.edu

Idaho State UNIVERSITY

Location: Pocatello
Student Population: 14,500
Majors: 275
Average Class Size: 21
Faculty/Student Ratio: 1/17
Contact: 208-282-2475
Established: 1901
www.isu.edu

Location: Idaho Falls
Student Population: 2,500
Majors: 16
Faculty/Student Ratio: 1/16
Contact: 208-282-7800
www.isu.edu/idahofalls/

Location: Meridian
Majors: 6
Contact: 208-373-1700
www.isu.edu/meridian/

Location: Twin Falls
Majors: 5
Contact: 208-736-2101
www.isu.edu/twinfalls/

University of Idaho

Location: Moscow
Student Population: 12,500
Majors: 135
Faculty/Student Ratio: 1/18
Contact: 888-884-3246
Established: 1889
www.uidaho.edu

Location: Boise
Student Population: 1,260
Majors: 18
Average class size: 12
Faculty/Student Ratio: 1/11
Contact: 208-334-2999
Established: 1910
www.uidaho.edu/boise

Idaho Higher Education

State Colleges



College of Southern Idaho

Location: Twin Falls
Student Population: 9,100
Majors: 120
Avg. Class: Academic: 21
Avg. Class: Technical: 13
Faculty/Student Ratio: 1/23
Contact: 208-732-6221
Established: 1965
www.csi.edu



Lewis-Clark State College

Location: Lewiston
Student Population: 4,500
Majors: 90+
Average Class Size: 25-30
Faculty/Student Ratio: 1/14
Contact: 800-933-5272
Established: 1893
www.lcsc.edu



Eastern Idaho Technical College

Location: Idaho Falls
Student Population: 1,360
Majors: 14
Average Class Size: 15
Faculty/Student Ratio: 1/15
Contact: 208-524-3000
Established: 1969
www.eitc.edu



North Idaho College

Location: Coeur d'Alene
Student Population: 6,570
Majors: 80
Average Class Size: 17
Faculty/Student Ratio: 1/16
Contact: 208-769-3311
Established: 1933
www.nic.edu



College of Western Idaho

Location: Nampa
Student Population: 9,000
Majors: 51
Avg. Class: Academic: 24
Avg. Class: Technical: 11
Faculty/Student Ratio: 1/22
Contact: 208-562-3000
Established: 2008
www.cwidaho.cc



Treasure Valley Community College - Caldwell

Location: Caldwell
Student Population: 1,000
Majors: 31
Avg. Class Size: 19
Faculty/Student Ratio: 1/16
Contact: 208-454-9911
Established: 2003
www.tvcc.cc/caldwell

Idaho Higher Education

Private Universities



Brigham Young University—Idaho

Location: Rexburg
Student Population: 15,000
Majors: 92
Average Class Size: 25
Faculty/Student Ratio: 1/25
Contact: 208-496-1300
Established: 1923
www.byui.edu



Northwest Nazarene University

Location: Nampa
Student Population: 1,300
Majors: 60+
Average Class Size: 12
Faculty/Student Ratio: 1/13
Contact: (208)467-8000
Established: 1913
www.nnu.edu



Location: Meridian
Majors: 14
Contact: 208-577-2900
www.broadviewuniversity.edu/



Location: Meridian
Student Population: on-line
Majors: 64
Average Class Size: on-line
Faculty/Student Ratio: on-line
Contact: 208-898-2000
Established: 1976
www.phoenix.edu



School of Law

Location: Boise
Contact: 208-639-5401
Student population: 100
Faculty/Student ratio: 1/8
Majors: 1
Established: 2012
www.concordialaw.com

Idaho Higher Education

Private Colleges



Location: Caldwell
Student Population: 1,120
Majors: 27
Average Class Size: 13
Faculty/Student Ratio: 1/12
Contact: 800-224-3246
Established: 1891
www.collegeofidaho.edu



Location: Boise
Student Population: 210
Majors: 12
Average Class Size: 18
Faculty/Student Ratio: 1/17
Contact: 208-376-7731
Established: 1945
www.boisebible.edu



Location: Boise
Majors: 8
Contact: 208-377-8080
Established: 2004
www.carrington.edu



Location: Boise, Idaho Falls, Nampa
Majors: 15
Contact: 800-622-2640
Established: 2004
www.stevenshenager.edu



Location: Boise
Student Population: 458
Majors: 25
Average Class Size: 28
Faculty/Student Ratio: 1/19
Contact: 208-322-8844
Established: 1962
www.itt-tech.edu



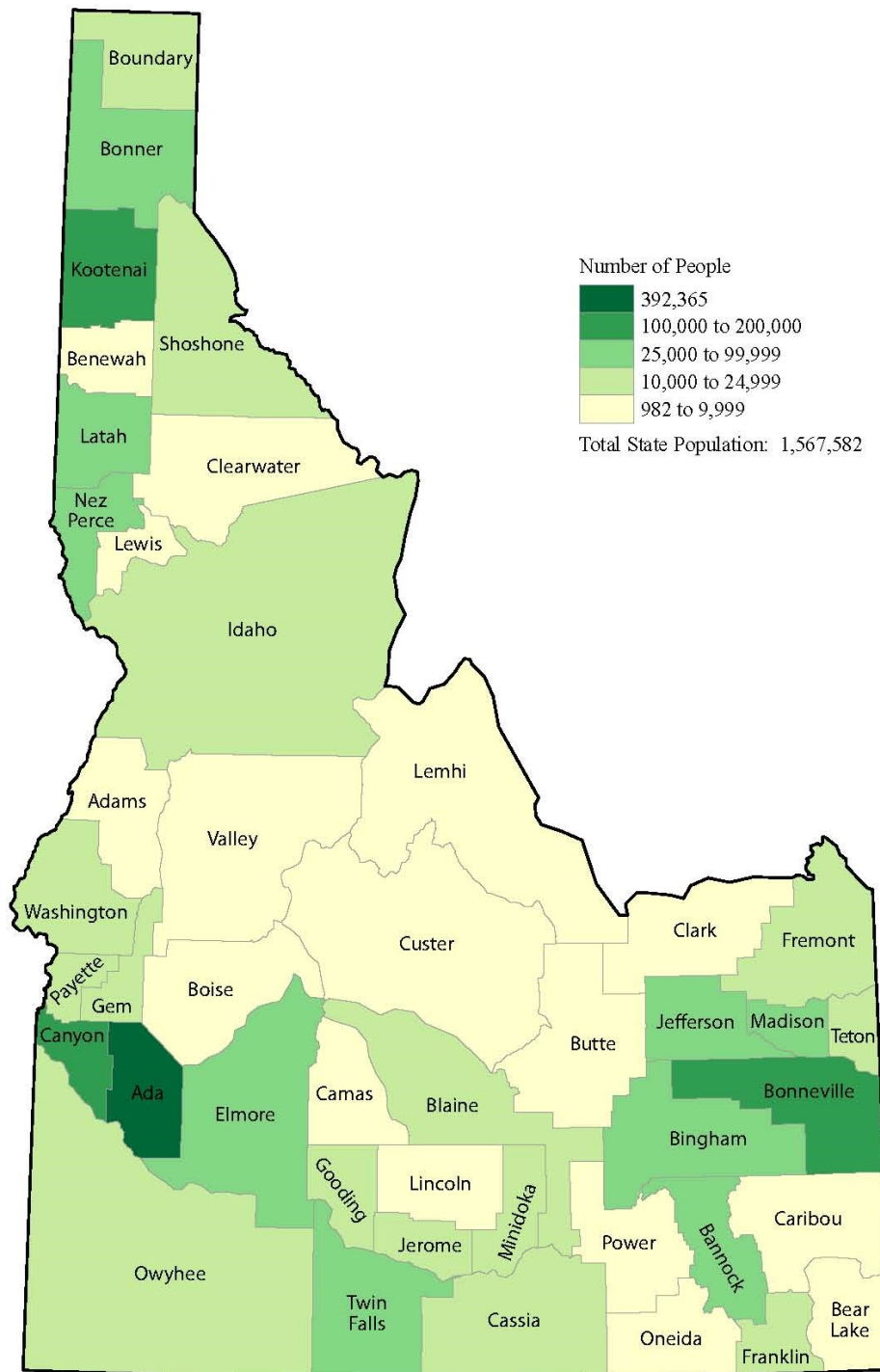
Location: Boise
Contact: 877-953-7745
Student population: 387
Faculty/Student Ratio: 1/20
Majors: 8
Established: 2008
www.brownmackie.edu/



Location: Moscow
Majors: 3
Contact: 208-882-1566
Student Population: 175
Established: 1994
www.nsa.edu

IDAHO - 2010 Census Results

Total Population by County



Source: U.S. Census Bureau, 2010 Census Redistricting Data Summary File
For more information visit www.census.gov.

United States™
Census
Bureau

Idaho County Demographics

www.commerce.idaho.gov/site-selection/demographics-and-business-information

Population over 105,000

Ada County Seat: Boise City Population: 416,464 Population Per Sq. Mile: 395.7 Median Age: 35.8 Per Capita Income: \$41,338 Median House Price: \$196,131 Educational Level: Bachelors +: 35.3% High School +: 93.3%	Canyon County Seat: Caldwell Population: 198,871 Population Per Sq. Mile: 338.6 Median Age: 32.7 Per Capita Income: \$25,050 Median House Price: \$136,369 Educational Level: Bachelors +: 16.6% High School +: 82.5%
Kootenai County Seat: Coeur d'Alene Population: 144,265 Population Per Sq. Mile: 116.0 Median Age: 39.8 Per Capita Income: \$35,164 Median House Price: \$204,350 Educational Level: Bachelors +: 23.8% High School +: 92.2%	Bonneville County Seat: Idaho Falls Population: 107,517 Population Per Sq. Mile: 57.6 Median Age: 32.2 Per Capita Income: \$37,183 Median House Price: \$159,807 Educational Level: Bachelors +: 26.5% High School +: 91.0%

Population Between 50,000-105,000

Bannock County Seat: Pocatello Population: 83,249 Population Per Sq. Mile: 74.9 Median Age: 32.8 Per Capita Income: \$30,411 Median House Price: \$145,298 Educational Level: Bachelors +: 27.2% High School +: 91.8%	Twin Falls County Seat: Twin Falls Population: 79,957 Population Per Sq. Mile: 41.6 Median Age: 34.7 Per Capita Income: \$33,824 Median House Price: \$152,502 Educational Level: Bachelors +: 16.0% High School +: 83.6%
---	---

Idaho County Demographics

Population Between 30,000-50,000

Bingham County Seat: Blackfoot Population: 45,290 Population Per Sq. Mile: 21.6 Median Age: 32.9 Per Capita Income: \$31,201 Median House Price: \$137,183 Educational Level: Bachelors +: 17.4% High School +: 84.9%	Bonner County Seat: Sandpoint Population: 40,699 Population Per Sq. Mile: 23.5 Median Age: 47.7 Per Capita Income: \$34,243 Median House Price: \$231,238 Educational Level: Bachelors +: 21.5% High School +: 90.5%
Latah County Seat: Moscow Population: 38,078 Population Per Sq. Mile: 35.4 Median Age: 28.6 Per Capita Income: \$35,114 Median House Price: \$192,580 Educational Level: Bachelors +: 42.9% High School +: 94.6%	Madison County Seat: Rexburg Population: 37,450 Population Per Sq. Mile: 79.8 Median Age: 23.1 Per Capita Income: \$21,892 Median House Price: \$174,114 Educational Level: Bachelors +: 31.9% High School +: 94.9%
Nez Perce County Seat: Lewiston Population: 39,915 Population Per Sq. Mile: 47.1 Median Age: 41.2 Per Capita Income: \$37,766 Median House Price: \$170,968 Educational Level: Bachelors +: 20.8% High School +: 89.5%	

Idaho County Demographics

Population Between 10,000-30,000

Blaine County Seat: Hailey Population: 21,329 Population Per Sq. Mile: 8.1 Median Age: 42.1 Per Capita Income: \$62,451 Median House Price: \$410,831 Educational Level: Bachelors +: 44% High School +: 90.5%	Boundary County Seat: Bonners Ferry Population: 10,853 Population Per Sq. Mile: 8.6 Median Age: 44.6 Per Capita Income: \$27,967 Median House Price: \$176,752 Educational Level: Bachelors +: 14.2% High School +: 83.8%	Cassia County Seat: Burley Population: 23,331 Population Per Sq. Mile: 9.1 Median Age: 32.2 Per Capita Income: \$36,171 Median House Price: \$126,527 Educational Level: Bachelors +: 16.1% High School +: 77.8%
Elmore County Seat: Mountain Home Population: 26,170 Population Per Sq. Mile: 8.5 Median Age: 30.8 Per Capita Income: \$37,046 Median House Price: \$144,080 Educational Level: Bachelors +: 15.3% High School +: 85%	Franklin County Seat: Preston Population: 12,854 Population Per Sq. Mile: 19.4 Median Age: 33.0 Per Capita Income: \$29,674 Median House Price: \$165,388 Educational Level: Bachelors +: 18% High School +: 91.8%	Fremont County Seat: St. Anthony Population: 12,927 Population Per Sq. Mile: 6.9 Median Age: 36 Per Capita Income: \$28,810 Median House Price: \$144,587 Educational Level: Bachelors +: 19.1% High School +: 87%
Gem County Seat: Emmett Population: 16,686 Population Per Sq. Mile: 29.7 Median Age: 44.7 Per Capita Income: \$28,511 Median House Price: \$157,778 Educational Level: Bachelors +: 14.2% High School +: 84.4%	Gooding County Seat: Gooding Population: 15,080 Population Per Sq. Mile: 20.7 Median Age: 36.0 Per Capita Income: \$43,292 Median House Price: \$129,266 Educational Level: Bachelors +: 12.4% High School +: 76.3%	Idaho County Seat: Grangeville Population: 16,116 Population Per Sq. Mile: 1.9 Median Age: 49.5 Per Capita Income: \$30,518 Median House Price: \$150,574 Educational Level: Bachelors +: 14.8% High School +: 87.8%
Jefferson County Seat: Rigby Population: 26,914 Population Per Sq. Mile: 24.6 Median Age: 31.1 Per Capita Income: \$30,474 Median House Price: \$161,836 Educational Level: Bachelors +: 21.2% High School +: 88.6%	Jerome County Seat: Jerome Population: 22,514 Population Per Sq. Mile: 37.7 Median Age: 32.2 Per Capita Income: \$33,632 Median House Price: \$138,499 Educational Level: Bachelors +: 14.8 % High School +: 70.9%	Minidoka County Seat: Rupert Population: 20,292 Population Per Sq. Mile: 26.8 Median Age: 35.4 Per Capita Income: \$33,382 Median House Price: \$109,176 Educational Level: Bachelors +: 10.3% High School +: 74.9%
Owyhee County Seat: Murphy Population: 11,472 Population Per Sq. Mile: 1.5 Median Age: 37.5 Per Capita Income: \$32,909 Median House Price: \$131,498 Educational Level: Bachelors +: 8.7% High School +: 74.9%	Payette County Seat: Payette Population: 22,610 Population Per Sq. Mile: 55.6 Median Age: 38.0 Per Capita Income: \$30,983 Median House Price: \$125,963 Educational Level: Bachelors +: 14.8% High School +: 83.2%	Shoshone County Seat: Wallace Population: 12,690 Population Per Sq. Mile: 4.8 Median Age: 46.8 Per Capita Income: \$35,331 Median House Price: \$140,833 Educational Level: Bachelors +: 13.7% High School +: 84.9%
Teton▶ County Seat: Driggs Population: 10,275 Population Per Sq. Mile: 22.9 Median Age: 35.5 Per Capita Income: \$29,385	Teton continued Median House Price: \$229,919 Educational Level: Bachelors +: 33.3% High School +: 88.1%	

Idaho County Demographics

Population Between 5,000-10,000

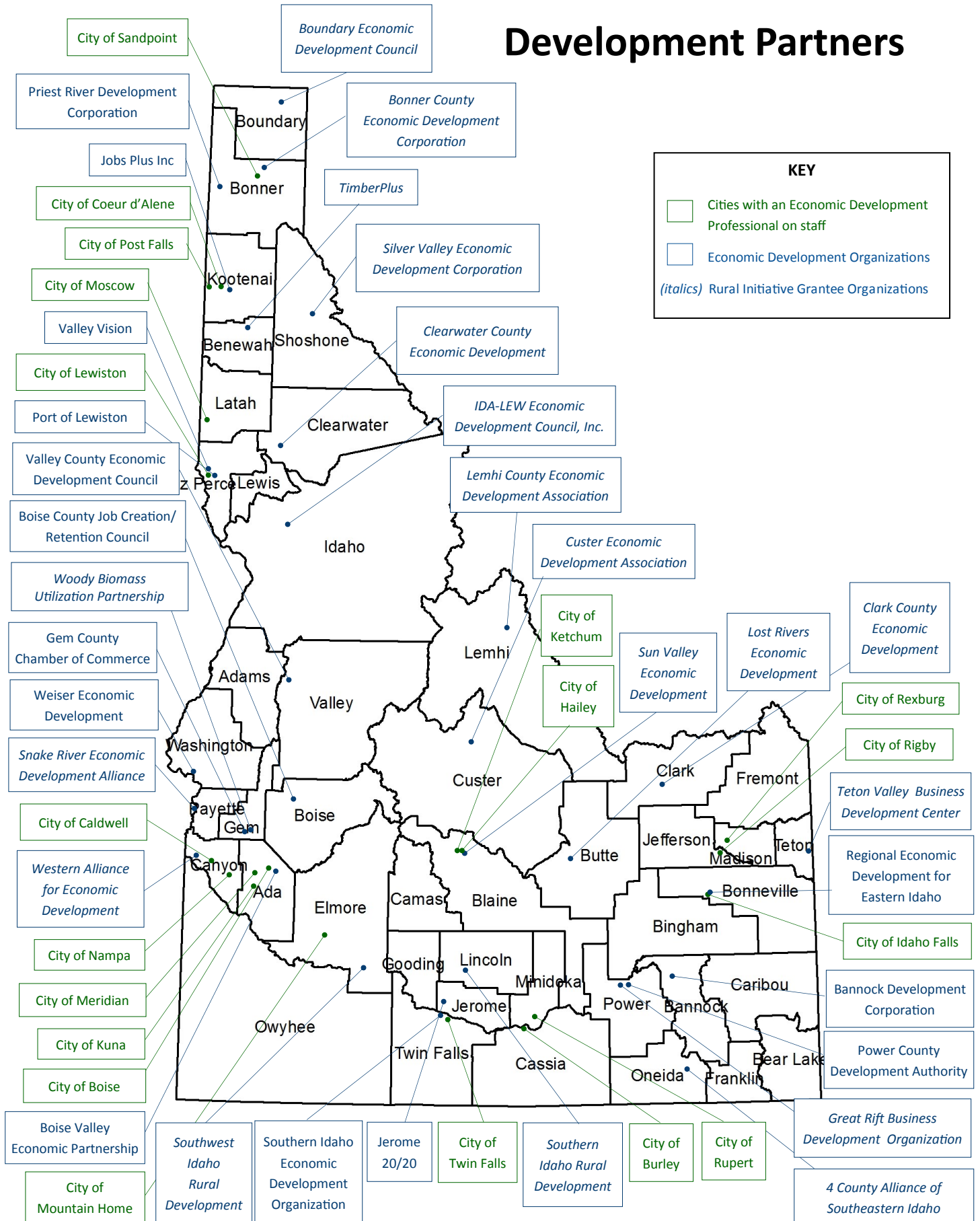
Bear Lake County Seat: Paris Population: 5,943 Population Per Sq. Mile: 6.1 Median Age: 39.4 Per Capita Income: \$33,647 Median House Price: \$133,528 Educational Level: Bachelors +: 13.8% High School +: 90.5%	Clearwater County Seat: Orofino Population: 8,577 Population Per Sq. Mile: 3.5 Median Age: 50.4 Per Capita Income: \$32,561 Median House Price: \$143,065 Educational Level: Bachelors +: 15.0% High School +: 86.2%
Benewah County Seat: St. Maries Population: 9,044 Population Per Sq. Mile: 11.6 Median Age: 46.5 Per Capita Income: \$35,731 Median House Price: \$125,816 Educational Level: Bachelors +: 13.2% High School +: 87.6%	Lemhi County Seat: Salmon Population: 7,712 Population Per Sq. Mile: 1.7 Median Age: 52.2 Per Capita Income: \$34,380 Median House Price: \$185,478 Educational Level: Bachelors +: 20.1% High School +: 90.3%
Boise County Seat: Idaho City Population: 6,795 Population Per Sq. Mile: 3.6 Median Age: 51.2 Per Capita Income: \$38,697 Median House Price: \$198,668 Educational Level: Bachelors +: 21.4% High School +: 87.5%	Caribou County Seat: Soda Springs Population: 6,808 Population Per Sq. Mile: 3.9 Median Age: 37.1 Per Capita Income: \$39,936 Median House Price: \$115,771 Educational Level: Bachelors +: 14.6% High School +: 90.2%
Lincoln County Seat: Shoshone Population: 5,315 Population Per Sq. Mile: 4.4 Median Age: 33.4 Per Capita Income: \$ 32,551 Median House Price: \$128,353 Educational Level: Bachelors +: 12.1% High School +: 73.9%	Power County Seat: American Falls Population: 7,719 Population Per Sq. Mile: 5.5 Median Age: 33.9 Per Capita Income: \$39,346 Median House Price: \$149,965 Educational Level: Bachelors +: 15.0% High School +: 82.2%
Valley County Seat: Cascade Population: 9,606 Population Per Sq. Mile: 2.6 Median Age: 49.4 Per Capita Income: \$40,837 Median House Price: \$247,777 Educational Level: Bachelors +: 34.4% High School +: 91.9%	Washington County Seat: Weiser Population: 9,944 Population Per Sq. Mile: 6.8 Median Age: 44.9 Per Capita Income: \$30,152 Median House Price: \$136,369 Educational Level: Bachelors +: 15.8% High School +: 80.2%

Idaho County Demographics

Population Under 5,000

Adams County Seat: Council Population: 3,828 Population Per Sq. Mile: 2.8 Median Age: 52.7 Per Capita Income: \$32,341 Median House Price: \$144,993 Educational Level: Bachelors +: 19.4% High School +: 89.5%	Butte County Seat: Arco Population: 2,642 Population Per Sq. Mile: 1.2 Median Age: 43.8 Per Capita Income: \$34,252 Median House Price: \$113,945 Educational Level: Bachelors +: 17.9% High School +: 91.5%
Camas County Seat: Fairfield Population: 1,042 Population Per Sq. Mile: 1.0 Median Age: 45.1 Per Capita Income: \$40,980 Median House Price: \$167,823 Educational Level: Bachelors +: 21.6% High School +: 81.7%	Clark County Seat: Dubois Population: 867 Population Per Sq. Mile: 0.5 Median Age: 35.9 Per Capita Income: \$50,137 Median House Price: \$85,433 Educational Level: Bachelors +: 12.7% High School +: 66.1%
Custer County Seat: Challis Population: 4,249 Population Per Sq. Mile: 0.9 Median Age: 50.1 Per Capita Income: \$33,640 Median House Price: \$156,763 Educational Level: Bachelors +: 25.9% High School +: 89.2%	Lewis County Seat: Nez Perce Population: 3,902 Population Per Sq. Mile: 8.1 Median Age: 47.2 Per Capita Income: \$45,337 Median House Price: \$119,931 Educational Level: Bachelors +: 16.2% High School +: 88.4%
Oneida County Seat: Malad Population: 4,275 Population Per Sq. Mile: 3.6 Median Age: 40.3 Per Capita Income: \$31,105 Median House Price: \$122,772 Educational Level: Bachelors +: 12.1% High School +: 91.7%	

Idaho Economic Development Partners



Idaho Economic Development Directory

Economic Development Partners

4 County Alliance of Southeastern Idaho ED Covers Bear Lake, Caribou, Franklin, and Oneida Counties Kathy Ray P.O. Box 32, Malad, ID 83252 P: 208-317-1827 F: 208-766-2448 fourcasi@hotmail.com	Bannock Development Corporation Covers Bannock County John Regetz 1651 Alvin Ricken Drive, Ste A, Pocatello, ID 83201 www.bannockdevelopment.org P: 208-233-3500 F: 208-233-0268 john@bannockdevelopment.org
Boise County Job Creation/Retention Council Covers Boise County John Cottingham P.O. Box 802, Garden Valley, ID 83622 P: 208-462-3178 cottinghmj@aol.com	Boise Valley Economic Partnership Covers Ada, Boise, Canyon, Gem, and Owyhee Counties Jana Jones 250 S. 5th Street, Ste 800, Boise, ID 83701 http://www.bvep.org/ P: 208-472-5246 F: 208-472-5201 jjones@bvep.org
Bonner County Economic Development Corporation Covers Bonner County Paul Kusche 231 N 3rd Ave, Ste 107, Sandpoint ID 83864 http://bonnercountyedc.com/ P: 208-265-6402 F: 208-263-7623 prkusche@bonnercountyedc.com	Boundary Economic Development Council Covers Boundary County <i>To be filled</i> P.O. Box 149, Bonners Ferry, ID 83805 boundaryedc.com P: 208-267-0352 F: 208-267-4375
City of Boise Economic Development Office Nic Miller 150 N Capitol Blvd, Boise, ID 83701 www.cityofboise.org P: 208-384-4421 F: 208-384-4420 nmiller@cityofboise.org	City of Burley Doug Manning P.O. Box 1090, Burley, ID 83318 burleyidaho.org/business-relocation P: 208-878-2224 F: 208-878-4436 dcmanning@pmt.org
City of Caldwell Steve Fultz P.O. Box 1177, Caldwell, ID 83606 www.cityofcaldwell.org P: 208-615-6135 sfultz@cityofcaldwell.org	City of Coeur d'Alene Troy Tymesen 710 E. Mullan Avenue, Coeur d'Alene, ID 83814 www.cdavid.org P: 208-769-2221 troy@cdavid.org

Idaho Economic Development Directory

Economic Development Partners, continued

City of Hailey Lisa Horowitz 115 Main St. S., Hailey, ID 83333 www.haileycityhall.org P: 208-788-9815 x13 F: 208-788-2924 Lisa.horowitz@haileycityhall.org	City of Idaho Falls Dana Briggs 308 Constitution Way, Idaho Falls, ID 83402 www.idahofallsidaho.gov P: 208-612-8777 F: 208-612-8560 DBriggs@idahofallsidaho.gov
City of Ketchum Micah Austin 480 E. Ave. N., Ketchum, ID 83340 www.ketchumidaho.org P: 208-726-3841 F: 208-726-7812 maustin@ketchumidaho.org	City of Kuna Wendy Howell 763 W. Avalon, Kuna, ID 83634 www.kunacity.id.gov P: 208-387-7721 F: 208-922-5989 whowell@kunaID.gov
City of Lewiston Economic Development / Planning Jacqui Gilbert P.O. Box 617, Lewiston, ID 83501 P: 208-746-1318 x7261 F: 208-746-5595 jgilbert@cityoflewiston.org	City of Meridian Brenda Sherwood 33 E. Broadway, Meridian, ID 83642 www.meridiancity.org P: 208-489-0537 F: 208-884-8119 bsherwood@meridiancity.org
City of Moscow/Moscow Urban Renewal Agency Gary Riedner 206 E. 3rd St., Moscow, ID 83843 P: 208-883-7006 F: 208-883-7018 griedner@ci.moscow.id.us	City of Mountain Home Economic Development Paula Riggs 150 S. 3rd E., Mountain Home, ID 83647 www.mountain-home.us/cityhall P: 208-587-2173 F: 208-587-2175 priggs@mountain-home.us
City of Nampa - Economic Development Beth Ineck 411 3rd Street S., Nampa, ID 83651 www.whynampa.com P: 208-468-5488 ineckb@cityofnampa.us	City of Post Falls Shelly Enderud 408 N. Spokane St., Post Falls, ID 83854 www.postfallsidaho.org P: 208-773-3511 F: 208-773-8362 senderud@postfallsidaho.org

Idaho Economic Development Directory

Economic Development Partners, continued

City of Rexburg Economic Development Scott Johnson 35 North 1st East, Rexburg, ID 83440 rexburg.org P: 208-359-3020 scott.johnson@rexburg.org	City of Rigby John Bingham 158 W Fremont, Rigby, ID 83442 www.cityofrigby.com P: 208-745-8111 planningzoning@fybercom.net
City of Rupert Jeff McCurdy P.O. Box 246 (624 F St.), Rupert, ID 83350 www.rupert-idaho.com P: 208-436-9600 F: 208-436-9920 Jeff.mccurdy@rupert.id.us	City of Sandpoint Planning and Community Development Aaron Qualls 1123 Lake Street, Sandpoint, ID 83864 www.cityofsandpoint.com P: 208-255-2747 F: 208-263-3678 aqualls@sandpointidaho.gov
City Of Twin Falls <i>To be filled</i> P.O. Box 1907, Twin Falls, ID 83303 www.tfid.org P: 208-735-7240 F: 208-736-2296	Clark County Economic Development Covers Clark County Susanna Mizell P.O. Box 205, Dubois, ID 83423 www.clark-cty-wi.org P: 208-374-5808 Clark.coedo@mudlake.net
Clearwater County Economic Development Covers Clearwater County Chris St. Germaine P.O. Box 1826, Orofino, ID 83544 www.clearwatercounty.org/departments/economic_development P: 208-476-9829 F: 208-476-3634 cstgermaine@clearwatercounty.org	Custer Economic Development Association Covers Custer County including the City of Challis Jolie Turek P.O. Box 758 (411 Clinic Road), Challis, ID 83226 www.custereda.org P: 208-879-6861 info@custereda.org
Gem County Chamber of Commerce <i>To be filled</i> 1022 S Washington Ave, Emmett, ID 83617 www.emmettidaho.com P: 208.365.3485 chamber@emmettidaho.com	Great Rift Business Development Organization Covers Power County and the City of Aberdeen Kristen Jensen 550 N. Oregon Trail, American Falls, ID 83211-1800 greatriftbusinessdevelopment.com P: 208-380-1719 F: 208-226-2548 kristenrjensen@gmail.com

Idaho Economic Development Directory

Economic Development Partners, continued

<p>IDA-LEW Economic Development Council, Inc. Covers Idaho County and Lewis County Melisa Bryant 300 West Main St. Suite 201, Grangeville, ID 83530 www.ida-lew.org P: 208-983-8302 melisa@ida-lew.org</p>	<p>Jerome 20/20 Inc. Covers the City and County of Jerome Larry D. Hall 104 W. Main Street, Ste. 103, Jerome, ID 83338 P: 208-324-8982 lhall@jerome2020.com</p>
<p>Jobs Plus Inc/Kootenai County Covers Kootenai County Gynii Gilliam 210 Sherman Ave Suite 102, Coeur d'Alene, ID 83814 www.relocatetoidaho.org/northidaho P: 208-667-4753 F: 208-765-9349 gynii@relocatetoidaho.org</p>	<p>Lemhi County Economic Development Association Covers Lemhi County Tammy Stringham 803 Monroe St., Salmon, ID 83467 lceda.net P: 208-756-1567 F: 208-756-1506 director@lceda.net</p>
<p>Lost Rivers Economic Development—South Custer County Covers South Custer County Rod Michaelson P.O. Box 66, Mackay, ID 83251 Lostrivervalley.com/lost-river-valley P: 208-681-2631 Rodapm2@gmail.com</p>	<p>Lost Rivers Economic Development—Butte County Covers Butte County Chandos Gamett 3060 W. 2500 N., Arco, ID 83213 Lostrivervalley.com/lost-river-valley P: 208-680-9689 gamettchand@yahoo.com</p>
<p>Port of Lewiston Serves Intermountain and Midwest States David Doeringsfeld 1626 6th Av. N., Lewiston, ID 83501 www.portoflewiston.com P: 208-743-5531 portdave@portoflewiston.com</p>	<p>Power County Development Authority Covers Power County Valorie Watkins P.O. Box 621, American Falls, ID 83211 www.co.power.id.us P: 208-238-1278 watkins50@cableone.net</p>
<p>Priest River Development Corporation Covers the Priest River area Amy Emmons P.O. Box 400, Priest River, ID 83856 www.priestriveredc.com P: 208-448-1312 F: 208-448-2905 amyprdc@gmail.com</p>	<p>Regional Economic Development - Eastern Idaho Covers Bonneville and Bingham Counties; Assists Ban- nock, Bear Lake, Butte, Caribou, Clark, Franklin, Fremont, Jefferson, Madison, Oneida, Power and Teton Counties Jan Rogers P.O. Box 51564, Idaho Falls ID 83405 901 Pier View Dr. Suite 204, Idaho Falls ID www.easternidaho.org P: 208-534-1318 info@easternidaho.org</p>

Idaho Economic Development Directory

Economic Development Partners, continued

<p>Silver Valley Economic Development Corporation Covers Shoshone County and the Cities of Mullan, Wallace, Osburn, Kellogg, Wardner, Smelterville and Pinehurst Loren Whitten-Kaboth 703 Cedar Street, Wallace, ID 83873 www.silvervalleyedc.com P: 208-752-5511 F: 208-752-7741 director@silvervalleyedc.com</p>	<p>Snake River Economic Development Alliance Covers the Counties of Payette and Washington in Idaho and Malheur County in Oregon Kit Kamo 650 College Blvd., Ontario, OR 97914 www.snakerivereda.com P: 208-230-5214 kkamo@tvcc.cc</p>
<p>Southern Idaho Economic Development Organization Covers the Cities of Twin Falls, Jerome, Kimberly, Filer, Gooding, Wendell, Glenns Ferry, Burley, Heyburn, Paul, and Rupert Jeff Hough P.O. Box 1238, Twin Falls, ID 83303 www.southernidaho.org P: 208-731-9996 jeffh@southernidaho.org</p>	<p>Southern Idaho Rural Development Covers rural communities of Gooding, Lincoln, and Twin Falls Counties Julia Oxarango-Ingram 210 West C Street, Shoshone, ID 83352 https://sird4u.wordpress.com/ P: 208-309-3090 sird4u@gmail.com</p>
<p>Southwest Idaho Rural Development Covers Elmore County except Mountain Home Bonnie Layton P.O. Box 910, Glenns Ferry, ID 83623 P: 208-724-2624 economicdevelopment@rtci.net</p>	<p>Sun Valley Economic Development Covers Blaine County Harry Griffith PO Box 3893, Sun Valley, ID 83340 www.sunvalleyeconomy.org P: 208-721-7847 harry@sunvalleyeconomy.org</p>
<p>Teton Valley Business Development Center Covers the Teton Valley Brian McDermott P.O. Box 1557, Driggs, ID 83422 www.madeintetonvalley.com P: 208-354-1008 tetonvalleybusiness@gmail.com</p>	<p>TimberPlus Covers Benewah County Kim Schwanz P.O. Box 338 / 906 Main St., Maries, ID 83861 www.timberplus.org P: 208-245-2239 F: 208-245-2007 timberplus@smgazette.com</p>
<p>Valley County Economic Development Council Covers Valley County and the City of New Meadows Sherry Maupin PO Box 2365, McCall, ID 83638 www.valleycountyedc.org P: 208-630-2025 F: 208-630-2026 admin@valleycountyedc.org</p>	<p>Valley Vision Covers the Lewis Clark Valley Doug Mattoon and Debbie Baker 111 Main Street, Ste 130, Lewiston, ID 83501 www.lewis-clarkvalley.org P: 208-799-9083 F: 208-799-9082 doug@lewiston.com; debbie@lewiston.com</p>

Idaho Economic Development Directory

Economic Development Partners, continued

Weiser Economic Development Covers the City of Weiser Diana Thomas 55 E. Idaho, Weiser, ID 83672 www.cityofweiser.com P: 208-549-1965 mayor@cityofweiser.com	Western Alliance for Economic Development Covers Owyhee and rural Canyon County Tina Wilson P. O. Box 41, Wilder, ID 83676 www.westernallianceed.org P: 208-615-6083 tina@westernallianceed.org
Woody Biomass Utilization Partnership Covers Adams, Boise, Gem, and Valley County Rick Brenneman 1805 Hwy 16, Emmett, ID 83617 energy.idaho.gov/renewableenergy/wbup.htm P: 208-861-9847 rbrenneman@idahorcd.org	

Idaho County Map

This map displays the 44 counties of Idaho, each with a unique color. The counties are labeled as follows:

- Boundary** (Orange)
- Bonner** (Yellow)
- Kootenai** (Orange)
- Benewah** (Orange)
- Latah** (Yellow)
- Nez Perce** (Orange)
- Lewis** (Yellow)
- Shoshone** (Green)
- Clearwater** (Orange)
- Idaho** (Green)
- Adams** (Orange)
- Valley** (Yellow)
- Lemhi** (Orange)
- Washington** (Yellow)
- Gem** (Orange)
- Boise** (Green)
- Custer** (Orange)
- Clark** (Orange)
- Fremont** (Orange)
- Jefferson** (Green)
- Teton** (Green)
- Madison** (Yellow)
- Butte** (Yellow)
- Bingham** (Orange)
- Bonneville** (Orange)
- Caribou** (Yellow)
- Power** (Yellow)
- Bannock** (Orange)
- Franklin** (Orange)
- Oneida** (Green)
- Jerome** (Green)
- Lincoln** (Orange)
- Camas** (Yellow)
- Elmore** (Orange)
- Ada** (Yellow)
- Owyhee** (Orange)
- Twin Falls** (Yellow)
- Cassia** (Orange)
- Minidoka** (Orange)
- Blaine** (Green)
- Hailey** (Green)
- Gooding** (Orange)
- Jerome** (Green)
- Idaho Falls** (Orange)
- Rigby** (Green)
- Blackfoot** (Orange)
- Pocatello** (Orange)
- American Falls** (Orange)
- Soda Springs** (Orange)
- Paris** (Green)
- Malad City** (Green)
- St. Anthony** (Orange)
- Dubois** (Orange)
- Rexburg** (Orange)
- Driggs** (Orange)
- Murphy** (Orange)
- Caldwell** (Orange)
- Emmett** (Orange)
- Payette** (Orange)
- Weiser** (Orange)
- Council** (Orange)
- Cascade** (Yellow)
- Challis** (Orange)
- Salmon** (Orange)
- Grangeville** (Green)
- Orofino** (Orange)
- Lewiston** (Orange)
- Nezperce** (Orange)
- Wallace** (Orange)
- St. Maries** (Orange)
- Coeur d'Alene** (Orange)
- Sandpoint** (Yellow)
- Bonniers Ferry** (Orange)

Legend:

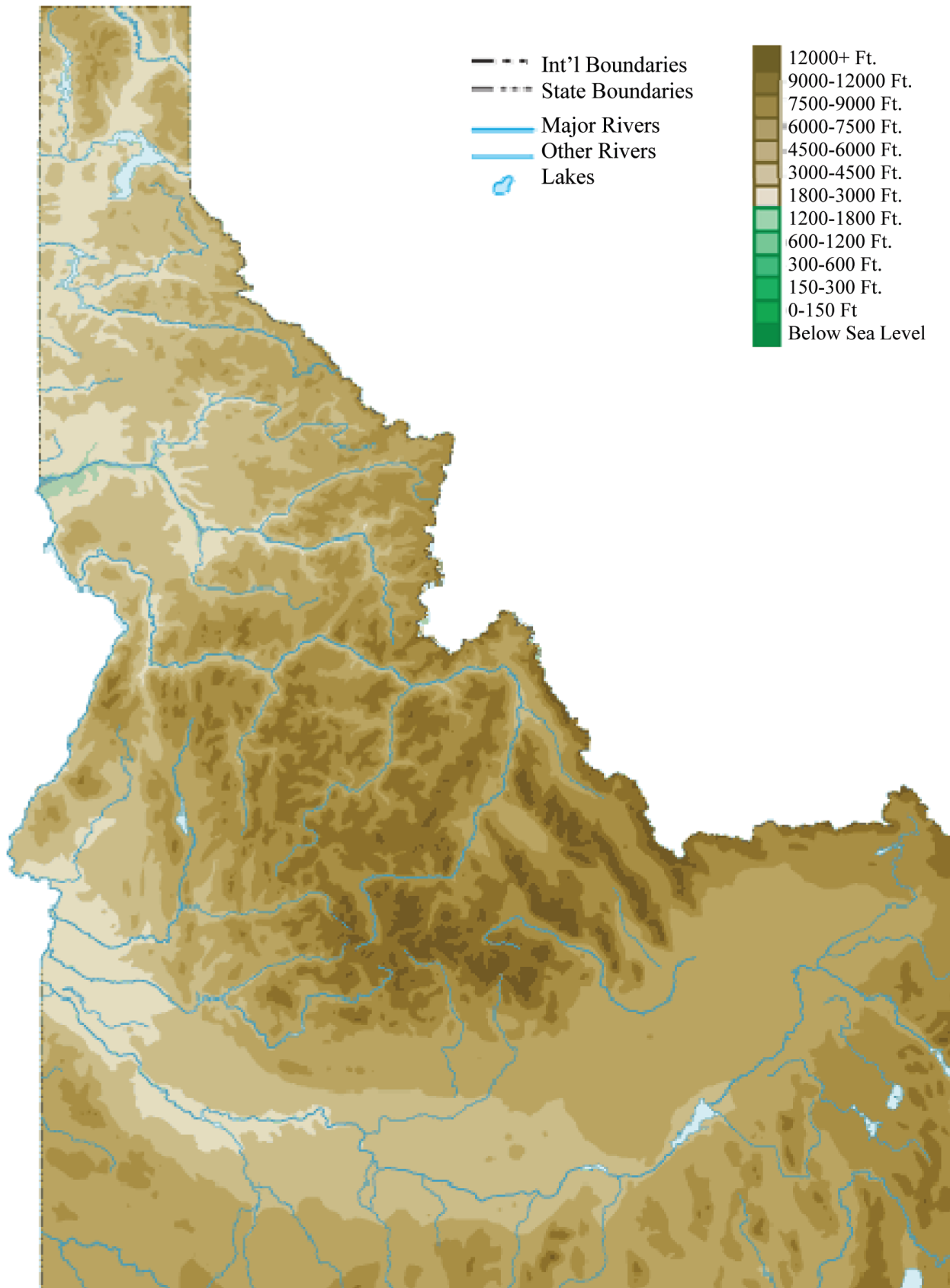
- County Seat

© geology.com

Idaho Relief Map



Idaho Topographical Map





commerce.idaho.gov