

YOUR ULTIMATE

WILD GUIDE

Wild Wadi Waterpark™ is located on Jumeirah Beach Road between Burj Al Arab Jumeirah and Jumeirah Beach Hotel. Experience unforgettable aquatic adventures in one of Dubai's most iconic waterparks.

Thrilling rides. Shops. Restaurants. Parking. Cashless payment. Sun beds. Available for birthday packages, corporate and group outings.

Wild Wadi

WATERPARK

Jumeirah™

Connect with us to get our latest updates and promotions



wildwadi.com





TABLE OF CONTENT



WILD WADI MAP

RULES & TIMINGS

EXCLUSIVE OFFERS

ALL DAY DINING

CASHLESS SYSTEM

LOCKER SYSTEM



SAFETY AWARENESS

SWIMWEAR POLICY

WEIGHT REQUIREMENTS

THRILL RIDE METER



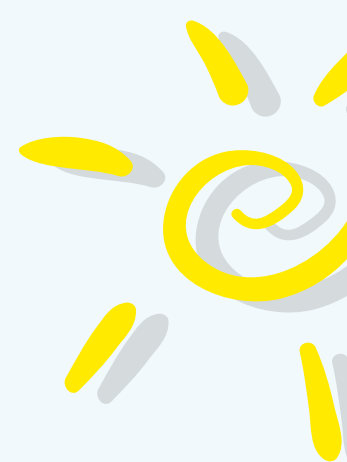


WILD WADI MAP

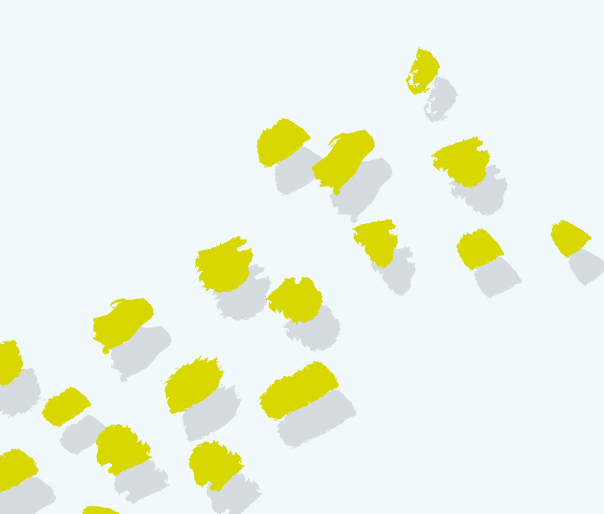
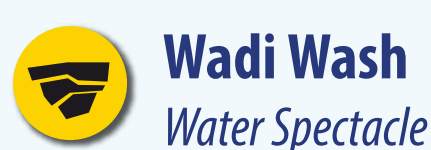


Map Legend

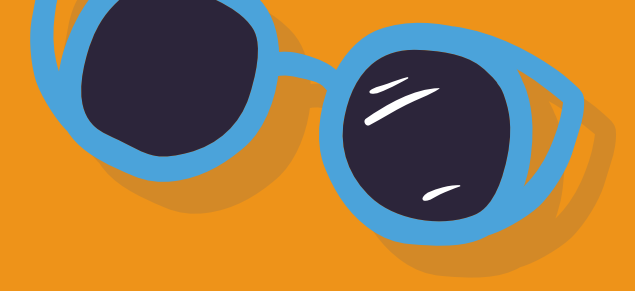
Rides and Attractions



Food, Shops and First Aid



BACK



STAY INFORMED

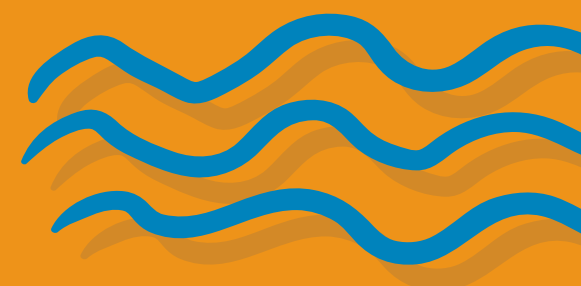
HARD RULES FOR PUBLIC HEALTH

- Hand sanitisers are placed around the waterpark
- Guests should follow personal hygiene and etiquette before, during and after using the rides. i.e. no spitting in the water, regular washing of hands, cover sneezes and coughs, and shower before getting on the slides
- Don't share items such as food, equipment, and supplies that are difficult to clean with guests from other households
- Parents/Minders/Caretakers are responsible and accountable for their childrens' behaviour in the waterpark area and children must be supervised by an adult at all times to ensure social distancing on the rides
- Outside food and beverages, or any glass items are not permitted in Wild Wadi
- Wild Wadi Waterpark™ management reserves the right to enforce/change the rules and regulations under the guidance of the government at any time

WILD WADI HOURS

**Park opens from Monday to Sunday
from 10:00 to 18:00**

To know more about our daily closing timings
please visit wildwadi.com.



BACK



EXCLUSIVE EVENTS



FLOWRIDER EXCLUSIVE

You can book the awesome Flowrider and surf how you like.

For bookings, please contact us:

Tel: +971 4 348 4444 | Email: wwinfo@jumeirah.com

FEEL SPECIAL!



Book your own VIP Cabana and enjoy your personal:

**Fast Pass to Wipeout Flow Rider,
Flood River Flyer and White
Water Wadi**

**Selection of complimentary
drinks**

4 premium sun loungers

Dining table and chairs

Exclusive waiter service

Exclusive shaded area

8 complimentary towels

Please note the new Jumeirah Marsa Al Arab resort continues its development adjacent to the north side of Jumeirah Beach Hotel. While this is a visible construction project, every effort is being made to minimise guest disruption.

BACK

DINE ALL DAY



Wild Wadi's main restaurants are serving fast food favorites, enjoy a variety of burgers, and hotdogs, as well as some more healthy options like salads.

Monday to Sunday: From 10:00 - 18:00



Watch our animated chefs cook your freshly made pizza in a traditional brick oven with fresh ingredients and great flavours to satisfy your hunger after a fun time at Wild Wadi.

Monday to Sunday: From 12:00 - 18:00



Serving tasty favorites like the chicken wrap, shawarmas, fried chicken tenders and roasted chicken, as well as some more healthy options like salads.

Monday to Sunday: From 10:00 - 18:00



Wave View Café provides quick-serve snacks like nachos, popcorn, ice cream and of course, cool beverages to beat the heat.

Monday to Sunday: From 12:00 - 18:00

LAST RESTAURANTS MEAL ORDER 5:30 PM

FOOD ALLERGIES?

Please inform us if you have any allergic inquiries 48 hours before your visit, email info@wildwadi.com




[BACK](#)



GO CASHLESS!

No need to carry wet money, no need to carry it at all! Avoid the risk of losing your money on our exciting rides! Keep your money on your wristband.

It's simple and so much fun.
Let us tell you how...

- 1 Ask the cashier when you are buying your entrance ticket.**
 - 2 When you decide to buy something, the money will be deducted.**
 - 3 You can check your balance at any of our 'Readers' at our outlets.**
 - 4 If you need to add more money to your wristband, you can do this at any cash register.**
 - 5 Money left on the wristband can be refunded from any retail shop.**
- 



[BACK](#)

USING YOUR LOCKER

1

Load Money
on wristband
point of sale



2

Choose the locker

Select the locker with green light and place your wristband to open it



3

Place your belongings
inside the locker



4

To lock your locker

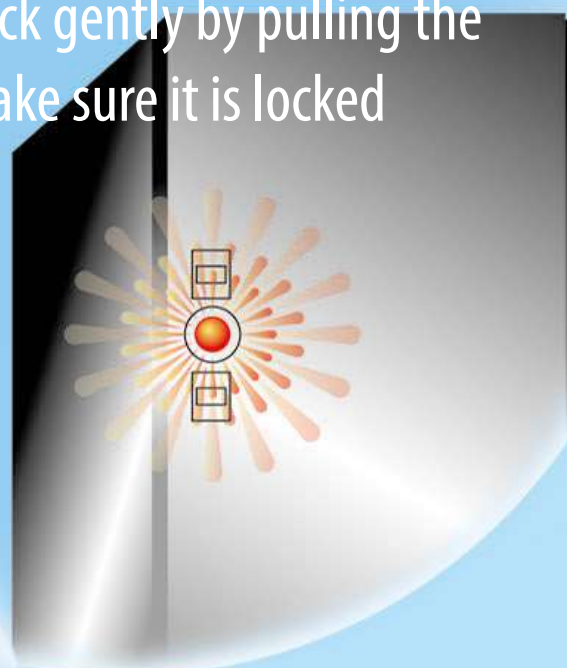
close the locker door and place your wristband against the green light.*



5

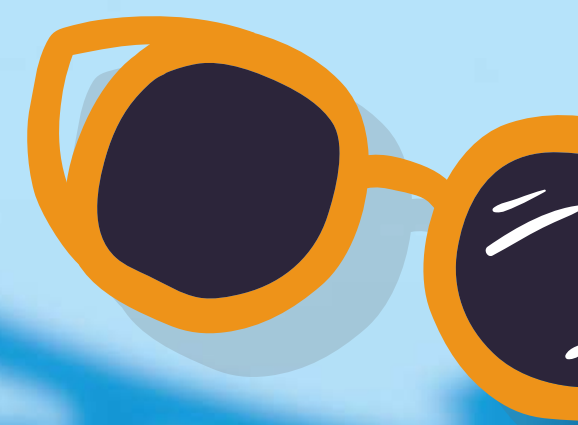
Check if light is on

The locker will beep and will turn to red light indicating it has locked, kindly check gently by pulling the door to make sure it is locked



6

To un-lock your locker place your wristband against the red light.



- Please make sure you remember your selected locker.
- Once you select your locker it will be the only applicable to use for the whole day therefore you will not be able to select a new locker after.
- One locker per wristband.
- If you couldn't lock and unlock your locker, please reach out to our security team.

For any assistance, please contact one of our security officers.

BACK

STAY INFORMED



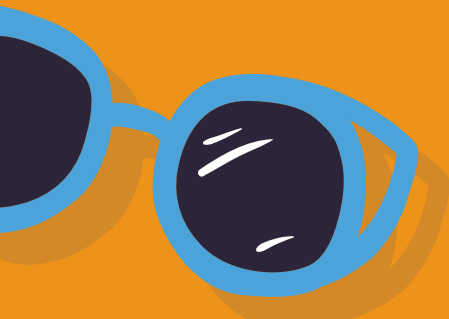
SAFETY AWARENESS

- Appropriate swimwear is required
- Follow our lifeguard instructions at all times
- Running and diving is not permitted
- Certain attractions have a 1.1m height requirement
- Hold on to the tube handles at all times
- Keep hydrated, drink lots of fluids
- Use no less than a factor 30 SPF sunscreen
- Don't drink the pool water
- Babies and toddlers must wear special diapers (available for free, please ask the team)
- Look at the ride and decide if you can safely participate as you are the best judge of your limitations
- Guests with medical conditions may be restricted to ride on some of the attractions
- Pregnant guests may be restricted to ride on some of the attractions and will be asked to sign "No Liability Letter"
- If you are not a confident swimmer please wear a life jacket, available at the Wavepool and Action River for free

BABY ON BOARD?

- Babies and toddlers must wear special diapers (available for free, please ask our Lifeguards)
- 'Regular Diapers' and swimming 'naked' is not permitted
- Changing of diapers is prohibited in and around any pool area
- Changing facilities are located in all of our changing rooms
- Swim diapers are available all around the waterpark
- Please do not swim when you or any member of your family have diarrhea (this is especially important for babies and toddlers wearing diapers)
- Please inform your family not to swallow pool water
- Appropriate swimwear **MUST** be worn at all times
- Management reserves the right to determine whether or not swimwear is appropriate

[BACK](#)





FOLLOW THE CODE

Our park is a great place to have fun but we still have some rules regarding our swimwear. Please follow the below park swimwear guides.



PERMITTED SWIMWEAR



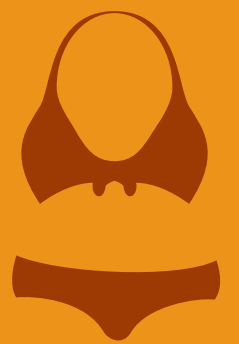
Swimming Suits



Board Shorts



Wet/Body Suit



Bikini



Rash vest or rash guard



Goggles
(not on Jumeirah Sceirah ride)



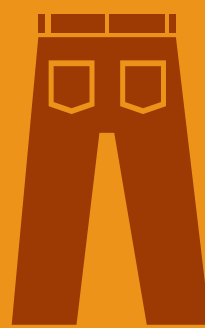
Full Body Swimwear



NON-PERMITTED SWIMWEAR



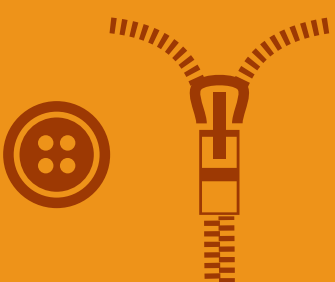
Undergarments



Jeans



Jackets



Clothes with buttons & zippers



Abaya on the rides



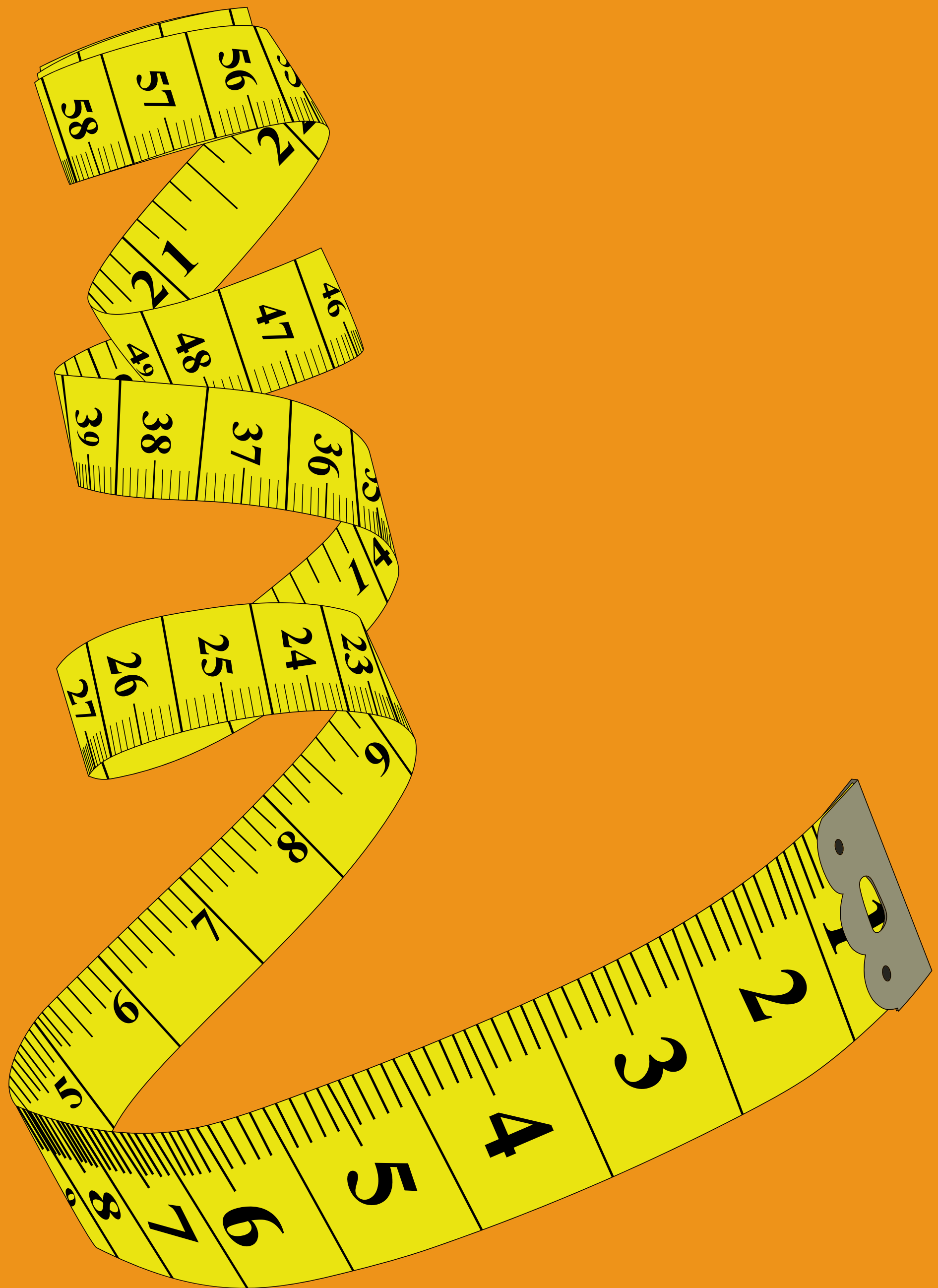
Cotton Fabric

[BACK](#)

STAY INFORMED

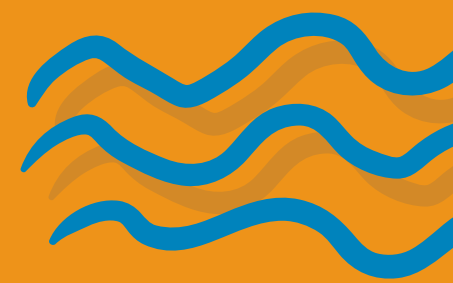
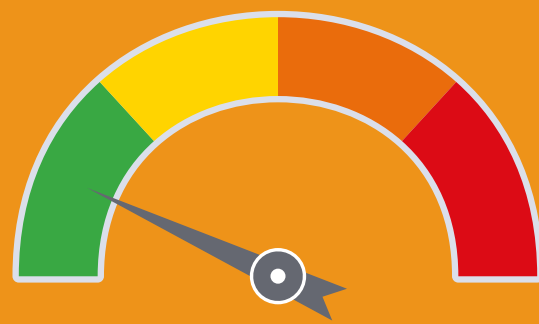
WEIGHT REQUIREMENTS

To ensure the safety of our guests some of our attractions and slides have height and weight guidelines. These are placed at the entrance of each ride and we request you to please read these carefully before entering the ride queue. Should you have any questions please check with one of our lifeguards or team members for further assistance.



[BACK](#)

THRILL RIDE METER



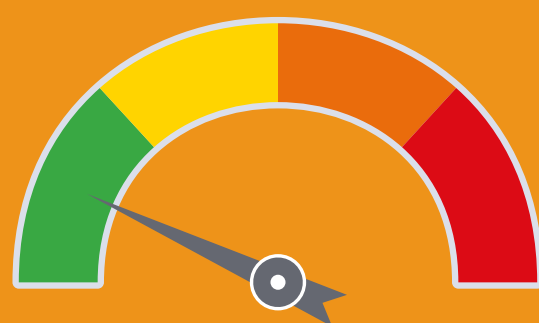
LOW SPEED AND/OR SHALLOW WATER ATTRACTIONS.

Offering water fun for those who just want to get wet and relax. Suitable for supervised youngsters, seniors, disabled or partially health limited guests.



MODERATE THRILL RIDES AND/OR WATER DEPTH UP TO 1.1M.

For inexperienced riders, beginner swimmers and partially supervised disabled persons. Some rider control and maneuvering is required.



THRILL AND/OR HIGHLY ACTIVE RIDE ACTION.

Requires rider control and strong swimming skills. Not for guests who have health or medical limitations. Deep water or moderate to high speeds may be encountered. Physical activity may be strenuous.



INTENSE THRILL AND/OR DEEP WATER ATTRACTIONS.

Requires great rider control, good swimming skills and good physical condition. Can be stressful to those who fear heights, high speeds, and/or enclosed spaces. Not for guests who have health/medical limitations.

[BACK](#)