

Wellington II Pump Station Rehabilitation

Project No. WW-000001-019
Mount Vernon District

Department of Public Works and Environmental Services
Working for You!



A Fairfax County, VA, publication
February 10, 2023

Project Details

Project Description:

The Wellington II Pump Station Rehabilitation included the replacement of two pneumatic ejector pumps with two submersible grinder pumps and rehabilitation of the existing 8-inch gravity sewer and manholes. Two 410-LF 2-inch parallel force mains and temporary bypass pumping system that were originally proposed with this project were installed in November 2020 as part of the Wellington II Force Main Emergency. This project was substantially complete on October 31, 2022.

Project Overview:

- Removed existing submersible grinder pumps and associated equipment, including demolition of existing electrical, concrete, and asphalt pavement at the pump station.
- Existing stand-by generator was removed and stored offsite until new concrete generator pad was constructed. The generator was then reinstalled on the new concrete pad.
- Converted existing dry well into a new wet well by removing the intermediate floor and installing new concrete grout fill and cast-in-place concrete wet well top slab with access hatch.
- Installed new cast-in-place concrete valve vault with access hatch.
- Installed new submersible grinder pumps, piping and fittings, valves, flow meters, electrical equipment enclosure, associated electrical equipment, pump controls, and scout dialer.
- Installed cured-in-place lining in existing 8-inch gravity sewer and epoxy lined existing manholes.
- Installed cured-in-place lining in the existing 4-inch DIP pipes between the pump station wet well and the upstream manhole.
- Removed temporary bypass pumping system following completion of the pump station rehabilitation work.
- In addition to new landscaping and fencing, site restoration included installation of stormwater drainage to direct excessive runoff away from the pump station.

Project Team:

- Natasha H. Schmidt, P.E., Wastewater Design and Construction Division
- Amy Linderman, P.E., Wastewater Collection Division
- A/E Consultant: Rummel, Klepper & Kahl, LLP
- Contractor: Flippo Construction Company, Inc.



Mount Vernon District, Tax Map No. 102-2, 7615A Southdown Road



Wellington II Pump Station Rehabilitation Pre-Construction
Pre-Construction Photo of Pump Station



Wellington II Pump Station Rehabilitation Demolition

Demolition of Old Pump Station



Demolition of Old Pump Station



Wellington II Pump Station Rehabilitation Construction

Wet Well Top Slab Construction



Valve Vault Construction



Epoxy Rehab of Wet Well



Piping Installation Inside Wet Well and Valve Vault



8-inch Cured-in-Place-Pipe Installation Inside Existing 8-inch Gravity Sewer



Wellington II Pump Station Rehabilitation Equipment Installation

Electrical Equipment Installation



Manhole Rehabilitation

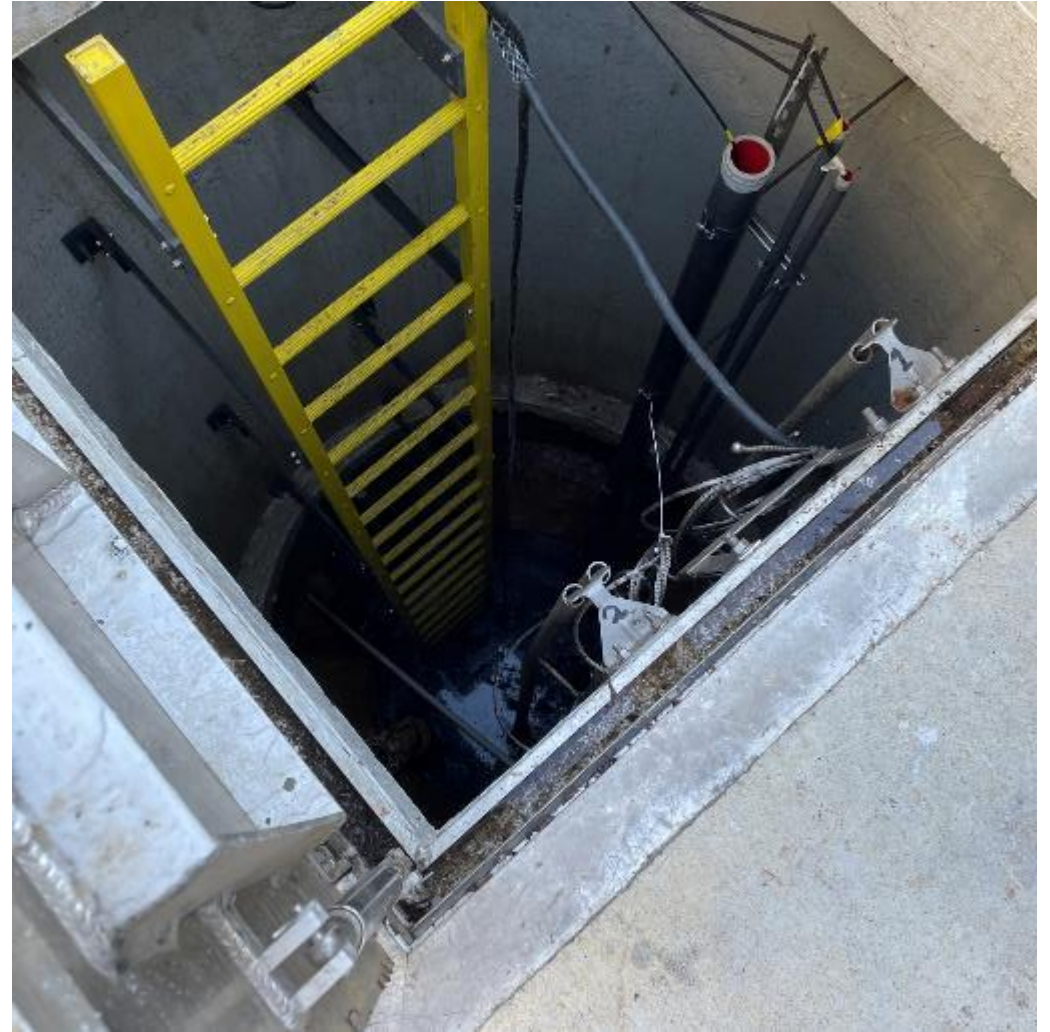


Site Restoration



Wellington II Pump Station Rehabilitation Completion

Substantial Completion Photos



Wellington II Pump Station Rehabilitation of Valve Vault

Substantial Completion Photos



Wellington II Pump Station Rehabilitation Comparison Photos Before and After Pictures

Before



After



Additional Information

For additional information, please contact

Sharon North, M.A., Section Chief, Communications
703-324-8455, TTY 711
Sharon.North@fairfaxcounty.gov

www.fairfaxcounty.gov/publicworks

