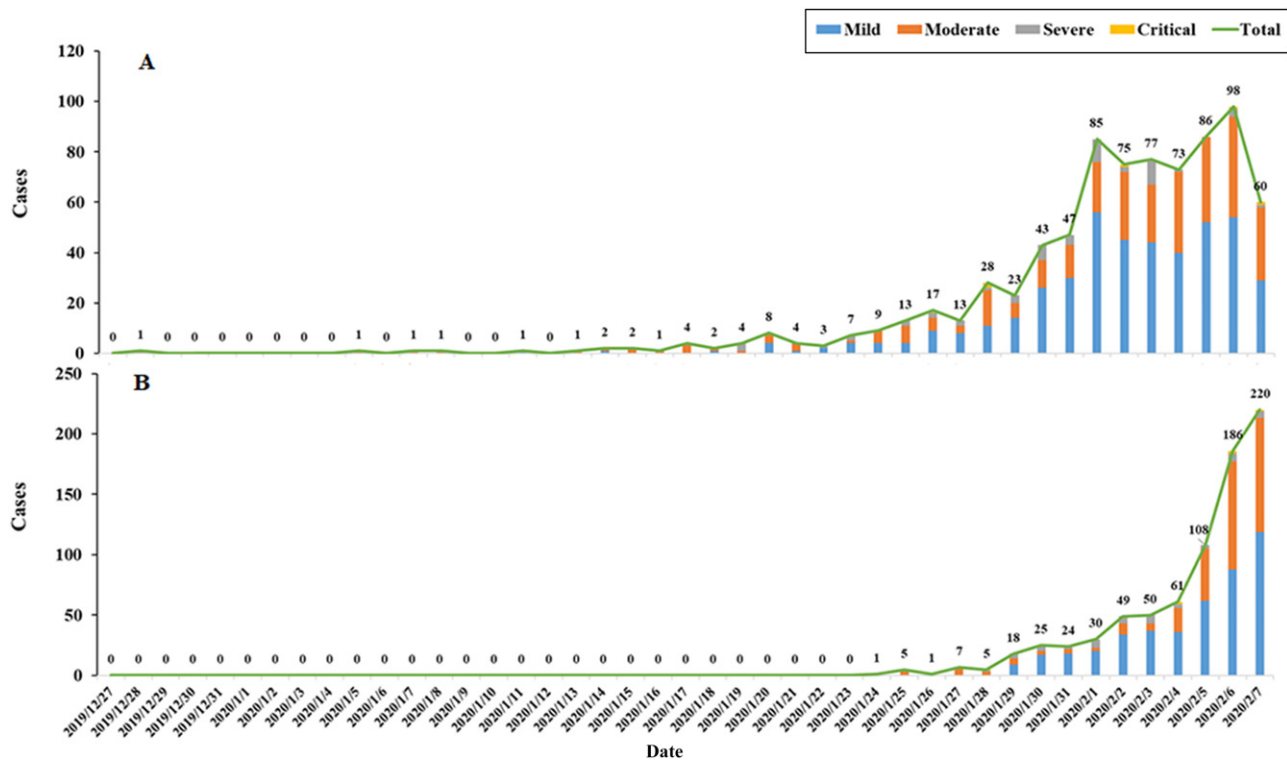
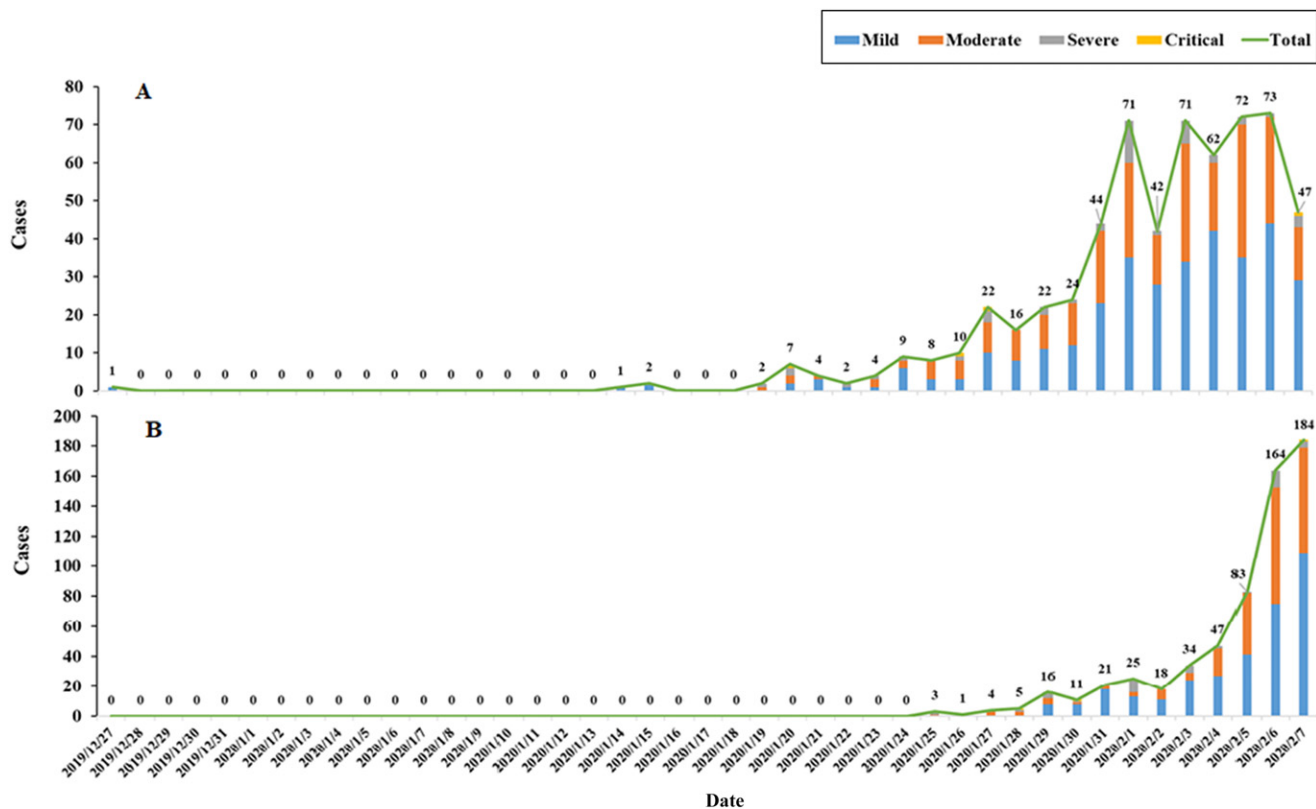


## Supplemental Information



### SUPPLEMENTAL FIGURE 6

Onset and diagnosis dates of 790 suspected male children's COVID-19 cases in China. A, Onset date. B, Diagnosis date.



**SUPPLEMENTAL FIGURE 7**

Onset and diagnosis dates of 617 suspected female children's COVID-19 cases in China. A, Onset date. B, Diagnosis date.

**Supplemental Table 3** Severity by Age, Restricted Only to Confirmed Cases

Age Group, y <sup>a</sup>	Asymptomatic	Mild	Moderate	Severe	Critical	Total
<1	7	51	20	5	2	85 (11.7)
1–5	15	58	61	3	0	137 (18.8)
6–10	30	76	62	1	0	169 (23.2)
11–15	27	70	81	2	0	180 (24.8)
>15	15	59	74	7	1	156 (21.5)
Total	94 (12.9)	314 (43.2)	298 (41.0)	18 (2.5)	3 (0.4)	727 (100)

Data are presented as *n* (%).

<sup>a</sup> One case had missing values.