

1 **Type of manuscript:** Original article

2

3 **Title:** Rapid diagnosis of SARS-CoV-2 infection by detecting IgG and IgM antibodies  
4 with an immunochromatographic device: a prospective single-center study

5

6 **Running title:** Rapid serologic test to diagnose SARS-CoV-2 infection

7

8 **Authors:** Felipe Pérez-García 1, ¥, \*, Ramón Pérez-Tanoira 1, ¥, Juan Romanyk 1,2,  
9 Teresa Arroyo 1, Peña Gómez-Herruz 1, Juan Cuadros-González 1,2

10

11 (\*), Correspondence: [felipe.perez.garcia.87@gmail.com](mailto:felipe.perez.garcia.87@gmail.com) (FPG)

12 (¥), Both authors contributed equally to this study.

13

14 **Authors affiliations:**

15 (1), Departamento de Microbiología Clínica, Hospital Universitario Príncipe de Asturias,  
16 Madrid, Spain.

17 (2), Departamento de Biomedicina y Biotecnología, Facultad de Medicina, Universidad  
18 de Alcalá de Henares, Spain.

19

20 **Correspondence author:** Felipe Pérez-García; Hospital Universitario Príncipe de  
21 Asturias. Servicio de Microbiología Clínica. Carretera de Alcalá, s/n, 28805 Meco  
22 (Madrid); Telf.: + 34 91 87 81 00; e-mail: [felipe.perez.garcia.87@gmail.com](mailto:felipe.perez.garcia.87@gmail.com)

23

24 **Alternative correspondence author:** Ramón Pérez-Tanoira; Hospital Universitario  
25 Príncipe de Asturias. Servicio de Microbiología Clínica. Carretera de Alcalá, s/n, 28805  
26 Meco (Madrid); Telf.: + 34 91 87 81 00; e-mail: [ramontanoira@hotmail.com](mailto:ramontanoira@hotmail.com)

27

28

29 **Abstract**

30 **Objectives:**

31 SARS-CoV-2 infection diagnosis is challenging in patients from 2-3 weeks after the  
32 onset of symptoms, due to the low positivity rate of the PCR. Serologic tests could be  
33 complementary to PCR in these situations. The aim of our study was to analyze the  
34 diagnostic performance of one serologic rapid test in COVID-19 patients.

35 **Methods:**

36 We evaluated an immunochromatographic test (*AllTest COVID-19 IgG / IgM*) which  
37 detects IgG and IgM antibodies. We validated the serologic test using serum samples  
38 from 45 negative patients (group 1) and 55 patients with COVID-19 confirmed by PCR  
39 (group 2). Then, we prospectively evaluated the test in 63 patients with clinical  
40 diagnosis of pneumonia of unknown etiology that were COVID-19 negative by PCR  
41 (group 3).

42 **Results:**

43 All 45 patients from group 1 were negative for the serologic test (specificity = 100%).  
44 Regarding group 2 (PCR-positive), the median time from their symptom onset until  
45 testing was 11 days. For these 55 group-2 patients, the test was positive for either IgM  
46 or IgG in 26 (overall sensitivity = 47%), and in patients tested 14 days or more after the  
47 onset of symptoms, the sensitivity was 74%. Regarding the 63 group-3 patients,  
48 median time after symptom onset was 17 days, and the test was positive in 56 (89%  
49 positivity).

50 **Conclusions:** Our study shows that serologic rapid tests could be used as a  
51 complement of PCR to diagnose SARS-CoV-2 infection after 14 days from the onset of  
52 symptoms and in patients with pneumonia and negative PCR for SARS-CoV-2.

53

54 **Keywords:**

55 SARS-CoV-2; COVID-19; immunocromatography; serologic rapid test; pneumonia;

56 diagnosis

57

## 58 **Introduction**

59 The pandemic due to SARS-CoV-2 that started in Wuhan four months ago (1,2) has  
60 caused until April 8, 2020, a total of 1,353,361 cases and 79,235 deaths worldwide (3).  
61 Spain is the country of the European region that has been most affected by the  
62 infection, accounting for 140,510 cases and 13,798 deaths by April 8 (3). From the  
63 beginning of the pandemic, one of the main concerns was the complexity and  
64 excessive time to results of the diagnostic test, based on polymerase chain reaction  
65 (PCR) (4,5). Few clinical microbiology laboratories were prepared at this time to  
66 process such a massive volume of samples that grew exponentially. In our hospital,  
67 which is a medium-sized center (490 beds), from March 5 to April 6, a total of 7,453  
68 respiratory samples (the vast majority nasopharyngeal exudates) were processed for  
69 SARS-CoV-2 PCR, reaching a positivity rate between 20 and 40%. Another problem  
70 was the low positivity rate of nasopharyngeal samples in patients presenting a clinical  
71 syndrome compatible with COVID-19 in the second and third week of infection (1,6-8),  
72 which is generally the period in which patients are admitted to the hospital (1). Besides,  
73 most patients presented a non-productive cough (9), and this fact, together with the  
74 high risk of generating aerosols in bronchoscopies explains that most respiratory  
75 samples came from the upper respiratory tract, where the virus concentration is lower  
76 beyond the first week after the onset of symptoms (8,10). As a consequence, the  
77 positivity rate of the PCR in these patients could be lower than expected and many of  
78 them were hospitalized with a provisional diagnosis of pneumonia of unknown etiology  
79 and possible COVID-19.

80

81 These limitations have led to development of different microplate ELISA tests (11,12).  
82 Recently published studies confirm the usefulness of combining PCR in  
83 nasopharyngeal exudates with the detection of IgM and IgG antibodies in the blood  
84 (13). The combination of molecular and serologic techniques allowed some authors to

85 achieve a sensitivity of 97% for diagnosis of SARS-CoV-2 infection (12). However,  
86 those time-consuming tests based on ELISA are not as suitable for clinical use as rapid  
87 tests and, as a matter of fact, cannot be included in the management algorithms in  
88 emergency departments (12-15).

89 Since the beginning of the epidemic in Spain, information emerged about the  
90 availability of rapid serological diagnostic kits that detected IgG and IgM antibodies  
91 using immunochromatographic (ICT) tests. However, there are very few published  
92 studies about the clinical application of these kits (15). Our aim was to evaluate the  
93 diagnostic performance of one of these serologic rapid tests, first by a validation of the  
94 test in negative control patients and confirmed cases of COVID-19, and then by a  
95 prospective evaluation in patients with pneumonia of unknown etiology and a clinical  
96 diagnosis of COVID-19 with negative PCR for SARS-CoV-2.

97

## 98 **Methods**

### 99 **Population and study period:**

100 We included three groups of patients in our study:

101 Group 1 (healthy controls): a randomly selected group of 55 patients who had a serum  
102 sample taken for other serologic studies, from October 1 to November 30, 2019 (before  
103 the first cases of COVID-19 were reported).

104 Group 2 (confirmed cases of SARS-CoV-2 infection): 55 patients admitted to the  
105 Emergency department between March 1 and April 6, 2020, with suspicion of COVID-  
106 19. The PCR was positive for SARS-CoV-2 for all of them.

107 Group 3 (pneumonia of unknown etiology): 63 patients admitted for at least 5 days  
108 between February 9 and April 2, 2020, with a clinical and radiological diagnosis of  
109 pneumonia of unknown etiology, in which the PCR for SARS-CoV-2 was negative.  
110 They were prospective studied after the validation of the serologic test.

### 111 **Diagnostic methods:**

112 Molecular techniques: Two automatic extractors were used to obtain viral RNA from  
113 clinical samples: *MagCore HF16* (RBC bioscience, Taipei, Taiwan) and *Hamilton*  
114 *Microlab Starlet* (Hamilton Company, Bonaduz, Switzerland). RNA amplification was  
115 made using two real-time PCR platforms: *VIASURE SARS-CoV-2 Real Time PCR*  
116 *Detection Kit* (Certest Biotech, Zaragoza, Spain) and *Allplex 2019-nCoV assay*  
117 (Seegene, Seoul, South Korea). All equipments were used according to the  
118 manufacturer's instructions for both the handling and the interpretation of the results.

119 Serology: we applied the *AllTest COV-19 IgG / IgM kit* (AllTest Biotech, Hangzhou,  
120 China) for the serological diagnosis. This test is a qualitative membrane-based  
121 immunoassay (immunochromatography) for the detection of IgG and IgM antibodies  
122 against SARS-CoV-2 in whole blood, serum or plasma samples. We used 10 $\mu$ L of  
123 serum for the performance of the test. For the negative control group (group 1),  
124 cryopreserved archive samples were obtained, which were previously defrosted and  
125 tempered to room temperature before analysis. The performance of the test and the  
126 interpretation of the results were done according to the manufacturer's instructions.

127 **Clinical data:**

128 Demographic and clinical variables of the study population were obtained from the  
129 medical records (age and sex). The time from the onset of symptoms was calculated  
130 in groups 2 and 3 from the day of onset of symptoms to the day of the extraction of the  
131 sample of serum.

132 **Serologic test validation:**

133 The serologic test was evaluated on clinical samples from groups 1 and 2 in order to  
134 assess the sensitivity and specificity of the test:

135 Group 1 (negative controls): they were used to evaluate the specificity of the  
136 serological test. 45 aliquots of cryopreserved sera, corresponding to 45 different  
137 controls, were recovered from the serum archive.

138 Group 2: (patients with positive PCR for SARS-CoV-2): they were used to evaluate the  
139 sensitivity of the serological test, using PCR as a gold standard. A total of 55 confirmed

140 cases of SARS-CoV-2 infection were included, and cryopreserved aliquots of serum of  
141 those patients were used. Those aliquots were previously obtained from samples sent  
142 to the laboratory to carry out other serologies.

#### 143 **Diagnostic performance of the serologic test:**

144 The assessment was performed on patients from group 3 (pneumonia of unknown  
145 etiology with negative PCR for SARS-CoV-2). Fresh serum samples from 63 patients  
146 were studied.

#### 147 **Statistical analysis:**

148 We considered a positive result for samples in which IgG, IgM or both of them were  
149 detected. Continuous variables are expressed as median and interquartile range (IQR)  
150 and categorical variables as proportions. Comparisons between categorical variables  
151 were made using the Chi-squared or Fisher's exact two-tailed test and the Mantel-  
152 Haenszel test for linear trends. For these comparisons, a  $p$  value less than or equal to  
153 0.05 was considered significant. Statistical analysis was performed with SPSS v20.0  
154 (IBM Corp., Armonk, NY, USA).

155

## 156 **Results**

157 A total of 163 patients were studied. Median age was 62 years (IQR: 51-74); 107  
158 (65.6%) were males. The overall serologic results from the three groups of patients are  
159 summarized in **Table 1**.

#### 160 **Serologic test validation:**

161 All patients included in group 1 (negative controls) showed negative results for  
162 serological tests. Thus, the serological test presented a specificity of 100%. The overall  
163 sensitivity of the test was 47.3% compared to PCR (**Table 1**). The sensitivity increased  
164 within the first 2 weeks both for IgM and IgG ( $p=0.008$  and  $p<0.001$ , respectively, **Table**  
165 **2**), reaching a sensitivity of 73.9% after 14 days from the onset of symptoms. **Figure 1**  
166 shows the evolution in the positivity rates of the test in group 2: for IgM antibodies, the

167 positivity increased to a maximum level of 66.7% that was reached approximately 13 to  
168 18 days after the onset of symptoms and then began to decrease until reaching its  
169 minimum at 31 to 36 days. IgG positivity rates increased up to 100% at 31 to 36 days  
170 after the onset of symptoms.

171

#### 172 **Diagnostic performance of the serologic test:**

173 We assessed the serologic test in the group 3 patients (patients with pneumonia of  
174 unknown etiology and negative PCR). Antibodies against SARS-CoV-2 were detected  
175 in 56 out of 63 patients (88.9%), being all of them positive for IgG antibodies. Twenty-  
176 five patients (39.7%) were also positive for IgM antibodies (**Table 1**). No patient had  
177 less than 7 days from onset of symptoms and the positivity rate increased from 7-13  
178 days (83.3%) to  $\geq 14$  days (91.1%), but this difference was not statistically significant for  
179 IgM or IgG ( $p=1.000$  and  $p=0.397$ , respectively, **Table 3**). We observed a similar  
180 pattern in the evolution of the percentages of positivity for IgM in these patients  
181 compared with those belonging to group 2 (**Figure 2**). However, group 3 patients  
182 exhibited a sustained higher positivity rate for IgG from days 13 to 30 after the onset of  
183 symptoms.

184

185

186

187

188

189

190

191

192

193

194



195

196

197 **Table 1. Overall serologic results from the three groups of patients**

<b>Group of patients</b>	<b>Group 1 (negative controls)</b>	<b>Group 2 (PCR positive)</b>	<b>Group 3 (pneumonia of unknown etiology and negative PCR)</b>
<b>No. patients</b>	45	55	63
<b>Age (years)</b>	55 (34-66)	63 (50-79)	67 (57-74)
<b>Sex (male)</b>	27 (60.0%)	33 (60.0%)	47 (74.0%)
<b>Time from onset of symptoms (days)</b>	Not applicable	11 (7-23)	17 (13-22)
<b>IgG positive</b>	0 (0%)	23 (41.8%)	56 (88.9%)
<b>IgM positive</b>	0 (0%)	12 (21.8%)	25 (39.7%)
<b>Positive result</b>	0 (0%)	26 (47.3%)	56 (88.9%)

198 **Statistics:** values are expressed as median (interquartile range) and absolute count  
 199 (percentage). A positive serologic result was defined for samples that resulted positive  
 200 for either IgM or IgG antibodies.

201

202 **Table 2. Serologic results in group 2 patients (PCR positive) according to the**  
 203 **time from the onset of symptoms**

<b>Time from onset of symptoms</b>	<b>&lt; 7 days</b>	<b>7-13 days</b>	<b>≥ 14 days</b>	<b>p-value</b>
<b>No. patients</b>	8 (14.5%)	24 (43.6%)	23 (41.8%)	-
<b>IgG positive</b>	1 (12.5%)	6 (25.0%)	16 (69.6%)	<b>&lt;0.001</b>
<b>IgM positive</b>	0 (0%)	3 (12.5%)	9 (39.1%)	<b>0.008</b>
<b>Positive result</b>	1 (12.5%)	8 (33.3%)	17 (73.9%)	<b>&lt;0.001</b>

204 **Statistics:** values are expressed as absolute count (percentage). A positive serologic  
205 result was defined for samples that resulted positive for either IgM or IgG antibodies. P-  
206 values were calculated by the Mantel-Haenszel test for linear trend. Significant  
207 differences are shown in bold. **Abbreviations:** PCR: polymerase chain reaction.

208

209 **Table 3. Serologic results in group 3 patients (pneumonia of unknown etiology**  
210 **and negative PCR) according to the time from the onset of symptoms**

<b>Time from onset of symptoms</b>	<b>&lt;7 days</b>	<b>7-13 days</b>	<b>≥ 14 days</b>	<b>p-value</b>
<b>No. patients</b>	0 (0%)	18 (28.6%)	45 (71.4%)	-
<b>IgG positive</b>	0 (0%)	15 (83.3%)	41 (91.1%)	0.397
<b>IgM positive</b>	0 (0%)	7 (38.9%)	18 (40.0%)	1.000
<b>Positive result</b>	0 (0%)	15 (83.3%)	41 (91.1%)	0.397

211 **Statistics:** values are expressed as absolute count (percentage). A positive serologic  
212 result was defined for samples that resulted positive for either IgM or IgG antibodies. P-  
213 values were calculated by Fisher's exact two-tailed test. Significant differences are  
214 shown in bold. **Abbreviations:** PCR: polymerase chain reaction.

215

## 216 **Discussion**

217 Our study shows that immunochromatographic tests are a reliable tool to diagnose  
218 SARS-CoV-2 infection from 14 days of onset of symptoms and are especially useful in  
219 hospitalized patients with pneumonia of unknown etiology with 14 or more days from  
220 the onset of symptoms and in whom the PCR has been negative.

221 The current situation of the COVID-19 pandemic requires an urgent and coordinated  
222 answer to the inherent problems of the PCR-based diagnosis: on the one hand the low  
223 capacity to carry out PCR techniques in some laboratories and also the low sensitivity  
224 of PCR test in nasopharyngeal samples, specially from the second week of infection  
225 (2,6). This study shows that the *AllTest COVID-19 IgG / IgM* rapid test for the detection

226 of IgG and IgM is very specific (100%) and reaches a sensitivity of 73.9% from day 14  
227 of onset of symptoms in patients with previous positive PCR in a nasopharyngeal  
228 exudate. There is increasing evidence on the usefulness of serology for diagnosis of  
229 SARS-CoV-2 infection, but most of these studies are based on microplate ELISA tests  
230 to detect IgA, IgM and IgG antibodies (12,13). These techniques have shown high  
231 sensitivity and specificity, but they also require special equipment, trained personnel  
232 and take several hours to perform. Due to this, there is an increasing interest about the  
233 usefulness of serologic rapid tests, but there is scarce information about their  
234 diagnostic performance. In a recently published study, Liu *et al.* (10) performed a  
235 multicenter evaluation of a serologic rapid test that the authors had developed. In their  
236 study, the overall sensitivity was 88.7% and the specificity was 90.6%. However,  
237 although they achieved a higher sensitivity than that obtained in our study, these  
238 authors did not present any data about the time after the onset of symptoms except  
239 from 58 out of 525 patients enrolled in the study. Moreover, for this subgroup of  
240 patients they only described that the time from the onset of symptoms was 8 to 33  
241 days. Maybe there was a selection bias in the enrolled patients and most of the  
242 recruited cases had long evolution times, possibly leading to these results in sensitivity.  
243 To the best of our knowledge, our study is the first evaluation of this serologic rapid test  
244 which has complete data on the time from the onset of symptoms. As this is a  
245 serological test, this kind of information is key in order to interpret properly the  
246 sensitivity and specificity results. Additionally, in our experience, the use of these tests  
247 allowed diagnosis of COVID-19 infection in 91.1% of a group of 63 patients admitted  
248 with a clinical diagnosis of COVID-19 pneumonia and negative PCR in nasopharyngeal  
249 exudate. According to our data, the vast majority of patients seroconvert from day 21  
250 and this is a key aspect in the management of health care personnel (16) and in  
251 population immunity studies related to pandemic control (17).

252 Our study is subject to some limitations. First, it has been conducted in a single  
253 hospital. Further multicenter studies are necessary to reinforce our findings. Second,

254 patient selection was made according to the diagnostic needs of our hospital.  
255 Consequently, group 3 patients were all patients with negative PCR patients with  
256 clinical and radiological criteria of pneumonia and because of that, our results could not  
257 be generalized to other patients with COVID-19 and other clinical syndromes.  
258 Additionally, group 3 patients also presented a longer evolution time than group 2  
259 patients. This probably explains that the overall positivity rates of the serological test  
260 are better than in group 3 (88.9% vs 47.3% in group 2). However, when we focus on  
261 patients with 14 or more days from onset of symptoms, the sensitivity and positivity rate  
262 increased for groups (91.1% for group 3 and 73.9% for group 2 patients). Because all  
263 of these limitations, further studies including all kinds of clinical presentations are  
264 needed in order to reinforce our conclusions.  
265 The question about the reliability of serologic rapid tests is still under debate  
266 (18,19) and more research is needed on this topic. We think that our study may help to  
267 point out the usefulness of these rapid tests.

268  
269

### **Acknowledgements**

270 We want to thank Carolyn Brimley Norris, from the University of Helsinki Language  
271 Services for her help with the preparation of the manuscript.

272

### **Funding**

274 This research received no specific grant from any funding agency in the public,  
275 commercial, or not-for-profit sectors.

276

### **Compliance with Ethical Standards**

#### **Conflict of interest**

279 The authors declare that they have no conflicts of interest.

#### **Informed consent**

281 Since the present study is retrospective, informed consent was not required.

## 282 **Ethical approval**

283 The study was conducted according to the ethical requirements established by the  
284 Declaration of Helsinki. The Ethics Committee of Hospital Universitario Príncipe de  
285 Asturias (Madrid) approved the study.

286

## 287 **Author contributions**

288 Study concept and design: FPG, RPT and JCG

289 Patients' selection and clinical data acquisition: FPG, RPT, JR, TA, PGH and JCG

290 Sample processing: JR, TA and PGH

291 Statistical analysis and interpretation of data: FPG and RPT

292 Writing of the manuscript: FPG, RPT, JR and JCG

293 Critical revision of the manuscript for relevant intellectual content: JR, JCG

294 Supervision and visualization: JCG

295 All authors read and approved the final manuscript.

## 296 **References**

297 (1) Guan W, Ni Z, Hu Y, Liang W, Ou C, He J, et al. Clinical Characteristics of

298 Coronavirus Disease 2019 in China. *New England Journal of Medicine* 2020 February

299 28;0(0):null.

300 (2) Omer SB, Malani P, Rio Cd. The COVID-19 Pandemic in the US: A Clinical Update.

301 *JAMA* 2020 /04/06.

302 (3) Novel Coronavirus (2019-nCoV) situation reports. Available at:

303 <https://www.who.int/emergencies/diseases/novel-coronavirus-2019/situation-reports>.

304 Accessed Apr 9, 2020.

305 (4) Tang Y, Schmitz JE, Persing DH, Stratton CW. The Laboratory Diagnosis of

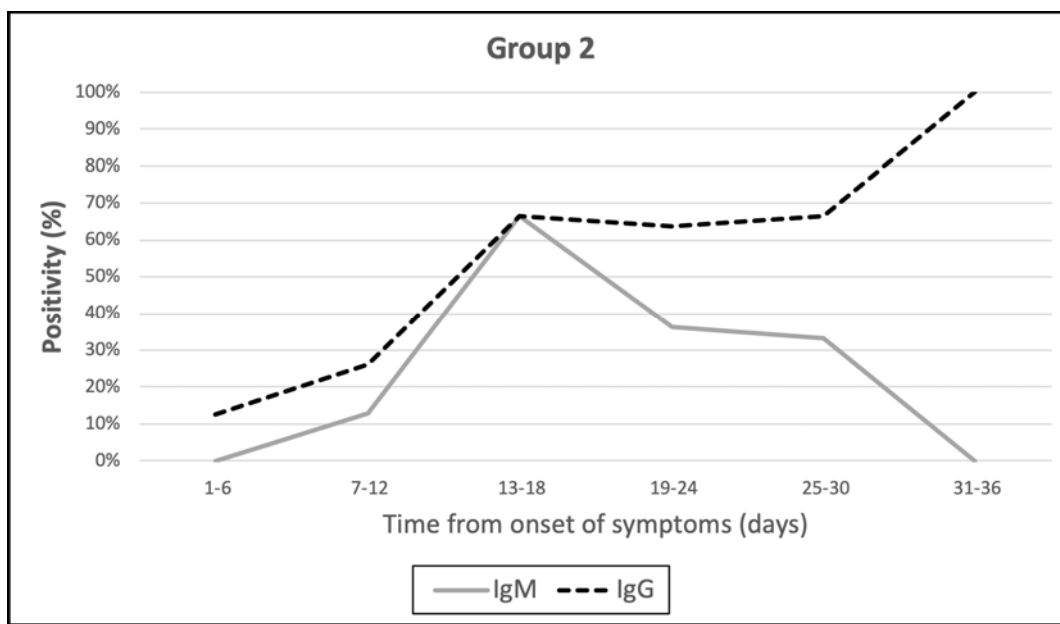
306 COVID-19 Infection: Current Issues and Challenges. *J Clin Microbiol* 2020.

- 307 (5) Vashist SK. No title. In Vitro Diagnostic Assays for COVID-19: Recent Advances  
308 and Emerging Trends 2020.
- 309 (6) Wölfel R, Corman VM, Guggemos W, Seilmaier M, Zange S, Müller MA, et al.  
310 Virological assessment of hospitalized patients with COVID-2019. *Nature* 2020:1-10.
- 311 (7) To KK, Tsang OT, Leung WS, Tam AR, Wu TC, Lung DC, et al. Temporal profiles  
312 of viral load in posterior oropharyngeal saliva samples and serum antibody responses  
313 during infection by SARS-CoV-2: an observational cohort study. *Lancet Infect Dis* 2020  
314 March 23.
- 315 (8) Pan Y, Zhang D, Yang P, Poon LL, Wang Q. Viral load of SARS-CoV-2 in clinical  
316 samples. *The Lancet Infectious Diseases* 2020;20(4):411-412.
- 317 (9) Yang W, Cao Q, Qin L, Wang X, Cheng Z, Pan A, et al. Clinical characteristics and  
318 imaging manifestations of the 2019 novel coronavirus disease (COVID-19):A multi-  
319 center study in Wenzhou city, Zhejiang, China. *Journal of Infection* 2020 Apr;80(4):388-  
320 393.
- 321 (10) Liu W, Liu L, Kou G, Zheng Y, Ding Y, Ni W, et al. Evaluation of Nucleocapsid and  
322 Spike Protein-based ELISAs for detecting antibodies against SARS-CoV-2. *J Clin*  
323 *Microbiol* 2020.
- 324 (11) Okba NM, Muller MA, Li W, Wang C, GeurtsvanKessel CH, Corman VM, et al.  
325 SARS-CoV-2 specific antibody responses in COVID-19 patients. *medRxiv* 2020.
- 326 (12) Guo L, Ren L, Yang S, Xiao M, Chang D, Yang F, et al. Profiling Early Humoral  
327 Response to Diagnose Novel Coronavirus Disease (COVID-19). *Clinical Infectious*  
328 *Diseases* 2020.
- 329 (13) Zhao J, Yuan Q, Wang H, Liu W, Liao X, Su Y, et al. Antibody responses to  
330 SARS-CoV-2 in patients of novel coronavirus disease 2019. 2020.
- 331 (14) Jin Y, Wang M, Zuo Z, Fan C, Ye F, Cai Z, et al. Diagnostic value and dynamic  
332 variance of serum antibody in coronavirus disease 2019. *Int J Infect Dis* 2020 April 03.

- 333 (15) Li Z, Yi Y, Luo X, Xiong N, Liu Y, Li S, et al. Development and Clinical Application  
334 of A Rapid IgM&#x2013;IgG Combined Antibody Test for SARS&#x2013;CoV&#x2013;2 Infection  
335 Diagnosis. J Med Virol 2020.
- 336 (16) Xiang Y, Jin Y, Wang Y, Zhang Q, Zhang L, Cheung T. Tribute to health workers  
337 in China: A group of respectable population during the outbreak of the COVID-19. Int J  
338 Biol Sci 2020;16(10):1739-1740.
- 339 (17) Pang J, Wang MX, Ang IYH, Tan SHX, Lewis RF, Chen JI, et al. Potential rapid  
340 diagnostics, vaccine and therapeutics for 2019 novel coronavirus (2019-nCoV): a  
341 systematic review. Journal of clinical medicine 2020;9(3):623.
- 342 (18) Advice on the use of point-of-care immunodiagnostic tests for COVID-19.  
343 Available at: [https://www.who.int/news-room/commentaries/detail/advice-on-the-use-of-](https://www.who.int/news-room/commentaries/detail/advice-on-the-use-of-point-of-care-immunodiagnostic-tests-for-covid-19)  
344 [point-of-care-immunodiagnostic-tests-for-covid-19](https://www.who.int/news-room/commentaries/detail/advice-on-the-use-of-point-of-care-immunodiagnostic-tests-for-covid-19). Accessed Apr 11, 2020.
- 345 (19) Cassaniti I, Novazzi F, Giardina F, Salinaro F, Sachs M, Perlini S, et al.  
346 Performance of VivaDiag COVID-19 IgM/IgG Rapid Test is inadequate for diagnosis of  
347 COVID-19 in acute patients referring to emergency room department. J Med Virol 2020  
348 March 30.

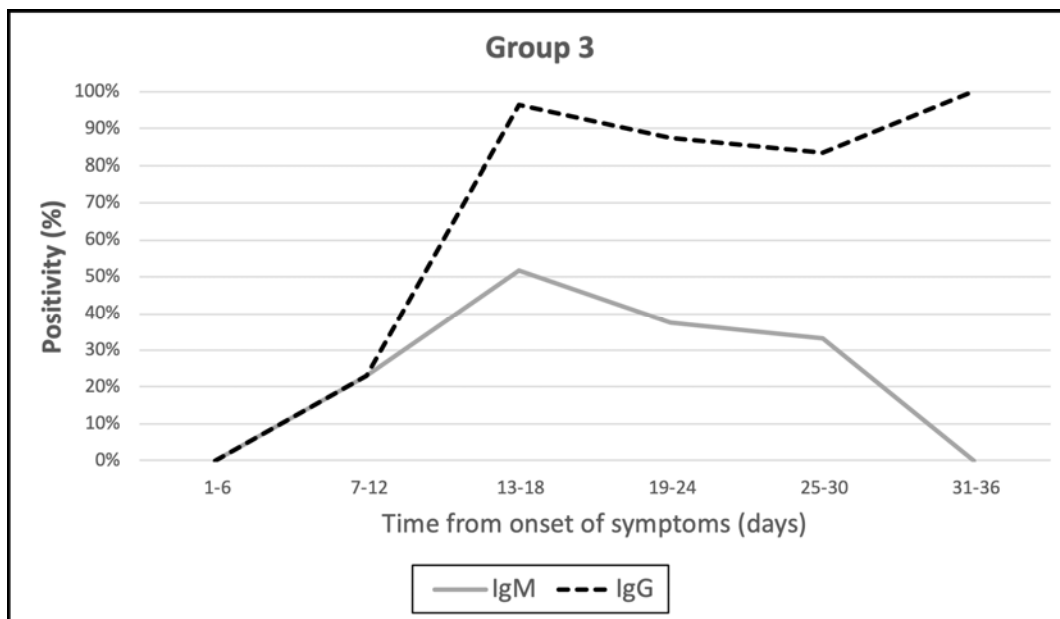
### 349 **Figure captions**

350 **Figure 1. Temporal evolution of the percentage of positivity for IgM and IgG**  
351 **antibodies in group 2 patients (PCR positive)**



352

353 **Figure 2. Temporal evolution of the percentage of positivity for IgM and IgG**  
354 **antibodies in group 3 patients (pneumonia of unknown etiology with negative**  
355 **PCR)**



356