

MX7000 IOM/Root Admin Setup

Revisions

Date	Description
Jan 2019	Initial release

Acknowledgements

This paper was produced by the following members of the Dell EMC storage engineering team:

Author:

Table of contents

Revisions.....	2
Acknowledgements.....	2
IOM Root/Admin User Setup	4

IOM Root/Admin User Setup

The purpose of this document is to give a rundown of how to determine the administrative password for any manageable I/O Modules that may be installed in your MX7000 chassis.

The new Dell MX7000 chassis allows the user flexibility in choosing the IO connectivity options for the sleds installed in the chassis. This flexibility comes from the ability to install various I/O Modules (IOMs) into the chassis. The IOMs install in the rear of the chassis and connect to matching mezzanine cards on each server sled. There are various IOMs available, from pass-through modules for networking like MX7116n, MX 25GbE PTM, and MX 10GbT PTM, storage IOMs like MX5000s, as well as sophisticated network switch modules like MX5108n, MX9116n, and MXG610s.

Some I/O Modules have very sophisticated management interfaces that are exposed via Web UIs or via serial access, while other modules, such as the MX5000s or network pass-through modules, do not have management capabilities.

When an IOM has a public management interface that allows users to log into the IOM, it has a pre-configured default root/admin privileged user and password that ships with the IOM. User can use this username and password to log in and configure the IOMs. This will be not applicable for IOMs that do not support a public management interface like MX5000s

DEFAULT ROOT/ADMIN USER NAME

Different IOMs may have different default root/admin user name. Please refer to vendors' documents for the default root/admin user name and its default password. The following are some of the IOM default root/admin privileged user names.

- MX5108n, MX9116n – linuxadmin
- MXG610s – admin

TYPES OF THE DEFAULT ROOT/ADMIN USER PASSWORD

There are 3 types of default root/admin user passwords that can be configured and applied to the IOM. Some of the passwords may or may not be set, but there is a distinct priority ordering by which they are applied. The passwords are

Vendor Default Root/Admin Password: When an IOM is shipped from the IOM vendor, the IOM will have a default password of the default root/admin privileged user. This is the Vendor Default Root/Admin Password.

Chassis Default Factory Root/Admin Password: The default password for the chassis, as shipped from the Dell factory. This password is printed on the chassis pull out information card, and this password is used to log into the chassis management module. This password will be pushed to IOM when IOM is booted if it is configured, and will override the vendor default password. There are special ordering options to order without a factory default password, and in these cases, the password will be left unset (or "NULL").

User Assigned Root/Admin Password: This is the password selected and programmed by the user via the chassis GUI or IOM CLI. This password will override both the factory default password as well as the vendor default password.

DEFAULT ROOT/ADMIN USER PASSWORD PRIORITIES

The password priority of the default root/admin privileged user are:

- First Priority: User Assigned Root/Admin Password
 - Once a user has configured a root/admin password for this IOM, the other two types of password will be ignored.
 - **If configured, this password will be still be applicable even when the IOM is rebooted or moved from chassis to chassis.**
 - This password can be reset only by Dell service technicians.
- Second Priority: Chassis Unique Default Root/Admin Password
 - If password will take effect only when the users has never configured the “User Assigned Root/Admin Password” at this IOM and it is not NULL.
 - Chassis may or may not have chassis Unique Default Root/Admin Password configured. If this has been configured, the chassis will push this password to IOM every time when the IOM is booted. Note: by default, all chassis have a unique default root/admin password assigned at the factory. To get a chassis without this password set requires special ordering procedures.
 - This password can be reset only by Dell service technicians.
- Lowest Priority: Vendor Assigned Default Root/Admin Password
 - This password will only take effect when user has not modified any root/admin password and Chassis Unique Default Root/Admin Password has not been configured at Chassis.

Here is the password diagram about how an IOM decides which password of the default root/admin privileged user will take effect when an IOM is booted.

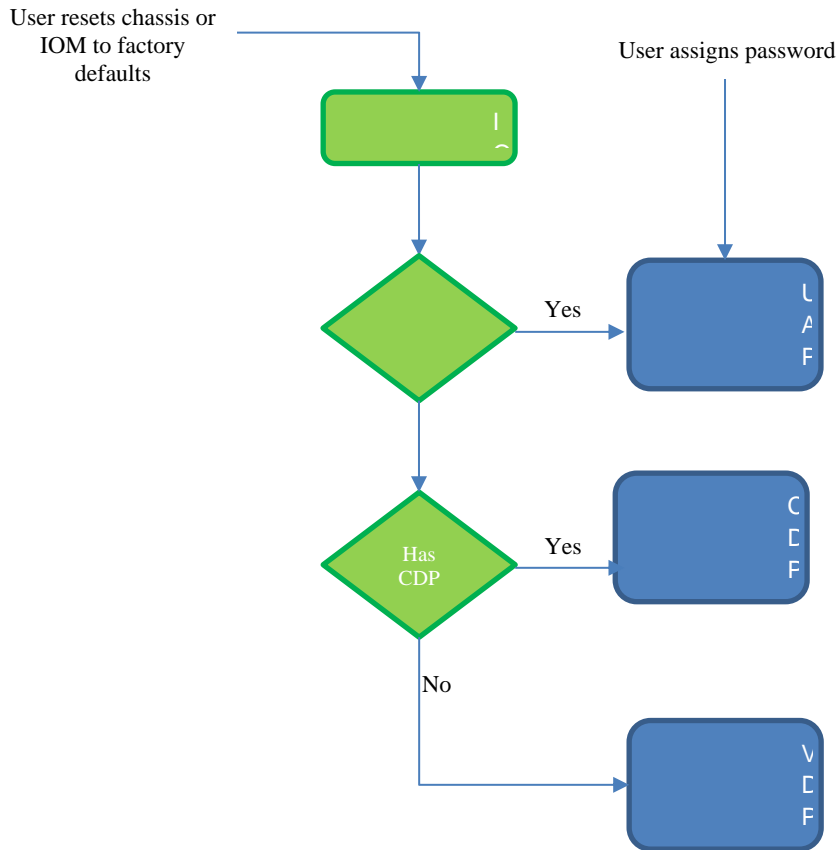


Figure 1 Root/Admin passwords Diagram

USERS ASSIGN PASSWORD

User can use the IOM CLI directly to change the password of default root/admin privileged user or use the OpenManage Enterprise Modular web UI as in the following dialog “Root Password” field.

IOM Root/Admin User Setup

The screenshot shows a web browser window with the URL `https://10.255.2.141/msm/console/console.html#/msm/device/device/device_po...`. The page title is "OpenManage Enterprise Modular". The main content area displays "IOM-A2" with status indicators: Health: ✔ Ok, State: ⏻ On, IP: 10.255.3.27, and Service Tag: LESERV123. Below this are navigation tabs: Overview, Hardware, Firmware, Alerts, and Settings (which is selected). A sidebar on the left shows a tree view with "Network" expanded and "Management" selected. The "Management" section contains two input fields: "Host Name" with the value "OS10" and "Root Password" with masked characters ".....". Below these fields are two buttons: "Apply" and "Discard".

Figure 2 User Assigns Root/Admin Password