



# Change Over Time

## Earthshots Cards

# Earthshots

Aral Sea, Kazakhstan and Uzbekistan



## Aral Sea, Kazakhstan and Uzbekistan 1977-2013

The Aral Sea was once the 4th largest lake in the world. Beginning in the 1960s, the water from the two major rivers that flow into the Aral Sea has been diverted to irrigate cotton and rice farms. Consequently, the volume of the Aral Sea has reduced dramatically.

Date	Satellite	Bands	Res	Path	Row
Sept. 1–3, 1977	Landsat 2 MSS	5,7,4	79 m	172–174	27–30
June/July 2013	Landsat 8 OLI	6,5,4	30 m	160–162	27–30

### Earthshots: Satellite Images of Environmental Change

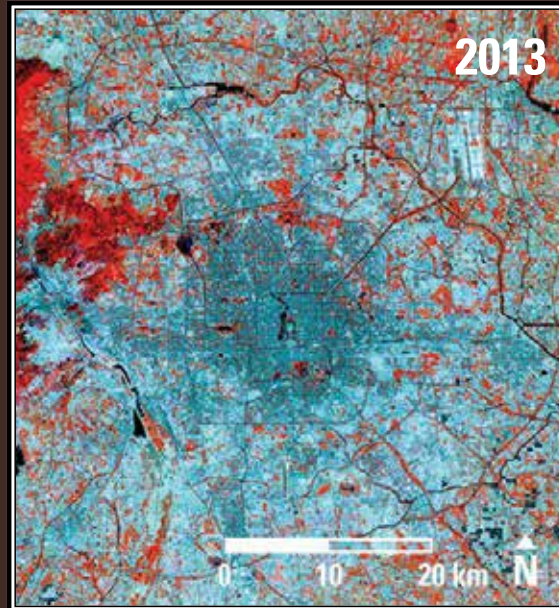
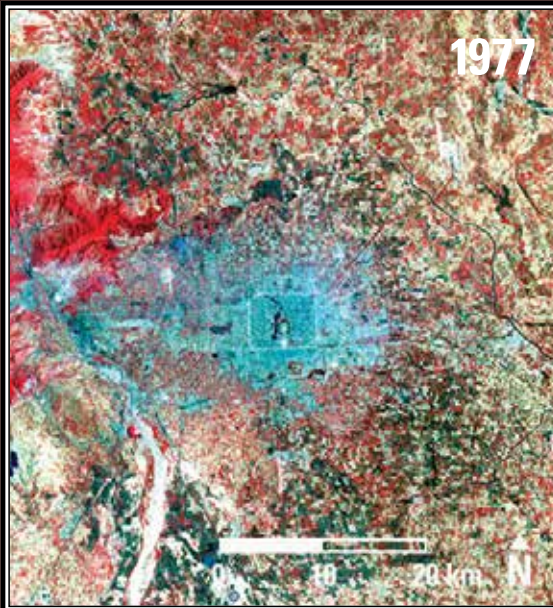
The U.S. Geological Survey Earth Resources Observation and Science (EROS) Center archives data from the Landsat satellites (1972–present). Earthshots presents environmental changes using Landsat images.





# Earthshots

Beijing, China



## Beijing, China 1977-2013

Beijing has changed remarkably in recent decades. The blue and gray tones in the images represent buildings and pavement spreading outward, replacing the red tones of natural and agricultural vegetation. The city has grown far beyond its traditional core around the Inner City, visible as a clear rectangle in the center.

Date	Satellite	Bands	Res	Path	Row
June 17, 1977	Landsat 2 MSS	6,5,4	79 m	132	32
May 12, 2013	Landsat 8 OLI	5,4,3	30 m	123	32

### Earthshots: Satellite Images of Environmental Change

The U.S. Geological Survey Earth Resources Observation and Science (EROS) Center archives data from the Landsat satellites (1972–present). Earthshots presents environmental changes using Landsat images.



<http://earthshots.usgs.gov>

# Earthshots

Chernobyl, Ukraine



## Chernobyl, Ukraine 1986-2013

A nuclear accident devastated the region near Chernobyl, Ukraine, on April 26, 1986. Farm fields are the bright green and tan shapes in the 1986 image. Those farms have converted to natural vegetation, the flat gray-green in the 2013 image.

Date	Satellite	Bands	Res	Path	Row
Apr. 29, 1986	Landsat 5 TM	7,5,3	30 m	182	24
Aug. 13, 2013	Landsat 8 OLI	7,6,4	30 m	182	24

### Earthshots: Satellite Images of Environmental Change

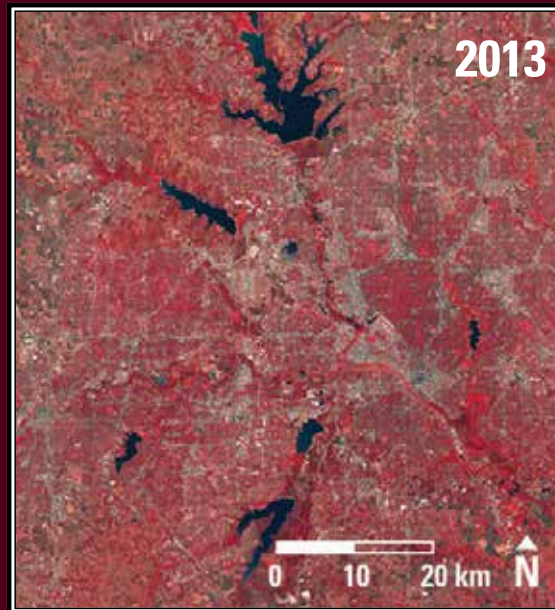
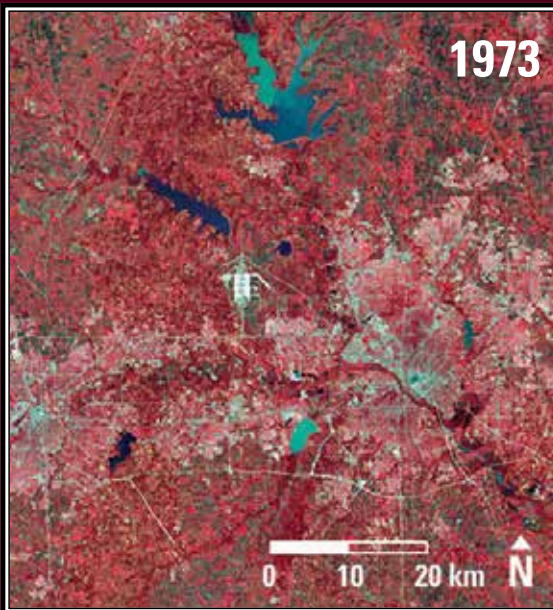
The U.S. Geological Survey Earth Resources Observation and Science (EROS) Center archives data from the Landsat satellites (1972–present). Earthshots presents environmental changes using Landsat images.





# Earthshots

Dallas, Texas, USA



## Dallas, Texas, USA 1973-2013

These images show the Dallas–Fort Worth metropolis in northeastern Texas. Over the last few decades, Dallas’ urban and suburban areas have expanded rapidly in almost every direction. Joe Pool Lake, in the bottom center of the 2013 image, is not present in the 1973 image.

Date	Satellite	Bands	Res	Path	Row
Oct. 19, 1973	Landsat 1 MSS	7,5,4	79 m	29	37
Aug. 31, 2013	Landsat 8 OLI	5,4,3	30 m	27	37

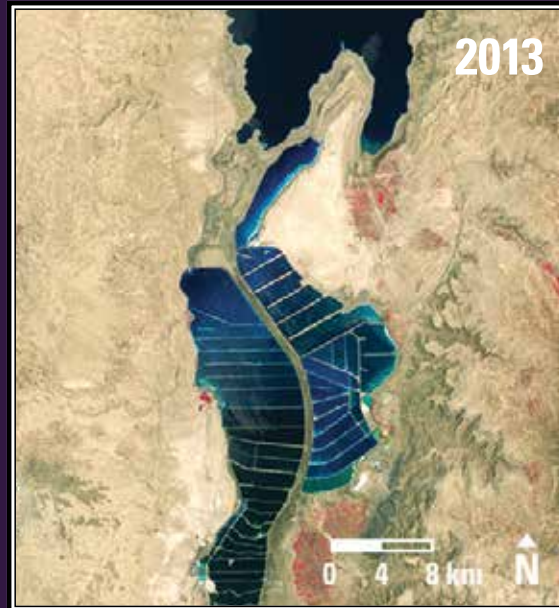
### Earthshots: Satellite Images of Environmental Change

The U.S. Geological Survey Earth Resources Observation and Science (EROS) Center archives data from the Landsat satellites (1972–present). Earthshots presents environmental changes using Landsat images.



# Earthshots

Dead Sea, Israel, Jordan, West Bank



## Dead Sea, Israel, Jordan, West Bank 1973-2013

The Dead Sea has no outlet. The only way water exits the sea is by evaporation. When the water evaporates, it leaves behind dissolved minerals, making the water even saltier. The salt and potash industries use water from the southern part of the sea in evaporation ponds.

Date	Satellite	Bands	Res	Path	Row
Jan. 1, 1973	Landsat 1 MSS	7,5,4	79 m	187	38
June 18, 2013	Landsat 8 OLI	5,4,3	30 m	174	38

### Earthshots: Satellite Images of Environmental Change

The U.S. Geological Survey Earth Resources Observation and Science (EROS) Center archives data from the Landsat satellites (1972–present). Earthshots presents environmental changes using Landsat images.



# Earthshots

Escondida Mine, Chile



## Escondida Mine, Chile 1989-2013

Isolated in Chile's Atacama Desert, the open-pit Escondida Mine is the world's largest source of copper. To conserve water and minimize environmental impacts, Escondida created a tailings impoundment that has expanded along with its mining operations.

Date	Satellite	Bands	Res	Path	Row
Oct. 27, 1989	Landsat 4 TM	4,3,2	30 m	233	77
Aug. 18, 2013	Landsat 8 OLI	5,4,3	30 m	233	77

### Earthshots: Satellite Images of Environmental Change

The U.S. Geological Survey Earth Resources Observation and Science (EROS) Center archives data from the Landsat satellites (1972–present). Earthshots presents environmental changes using Landsat images.





# Earthshots

Filchner Ice Shelf, Antarctica



## Filchner Ice Shelf, Antarctica 1973-1986

Ice shelves form where glaciers flow into the ocean. In 1986, an area the size of Connecticut broke off the Filchner Ice Shelf, forming several large icebergs that traveled as far as South America. These images show near-infrared reflectance, which discriminates well between ice and water.

Date	Satellite	Bands	Res	Path	Row
Nov. 11, 1973	Landsat 1 MSS	7	79 m	194	117
Nov. 10, 1986	Landsat 5 MSS	4	79 m	187	116

### Earthshots: Satellite Images of Environmental Change

The U.S. Geological Survey Earth Resources Observation and Science (EROS) Center archives data from the Landsat satellites (1972–present). Earthshots presents environmental changes using Landsat images.

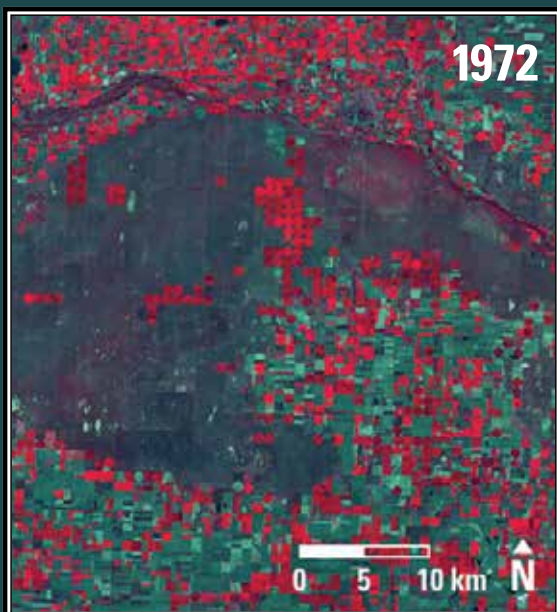


<http://earthshots.usgs.gov>



# Earthshots

Garden City, Kansas, USA



## Garden City, Kansas, USA 1972-2013

These images feature the significant growth in the use of center-pivot irrigation—enormous sprinkler systems—in Kansas between 1972 and 2013. Much of the former shortgrass prairie of western Kansas is now irrigated cropland. Common crops in this area are corn, wheat, and sorghum and are shown as bright red circles.

Date	Satellite	Bands	Res	Path	Row
Aug. 16, 1972	Landsat 1 MSS	7,5,4	79 m	32	34
Aug. 4, 2013	Landsat 8 OLI	5,4,3	30 m	30	34

### Earthshots: Satellite Images of Environmental Change

The U.S. Geological Survey Earth Resources Observation and Science (EROS) Center archives data from the Landsat satellites (1972–present). Earthshots presents environmental changes using Landsat images.



<http://earthshots.usgs.gov>

# Earthshots

Great Salt Lake, Utah, USA



## Great Salt Lake, Utah, USA 1972-1987

Great Salt Lake is shallow for its size—about 70 miles long and 30 miles wide, but only about 40 feet deep. Even a small rise in water level means large changes in the surface area of the lake. Rainy weather in the 1980s brought the lake to high levels.

Date	Satellite	Bands	Res	Path	Row
Sept. 13, 1972	Landsat 1 MSS	7,5,4	79 m	42	31
Dec. 18, 1987	Landsat 5 MSS	4,2,1	79 m	39	31

### Earthshots: Satellite Images of Environmental Change

The U.S. Geological Survey Earth Resources Observation and Science (EROS) Center archives data from the Landsat satellites (1972–present). Earthshots presents environmental changes using Landsat images.



# Earthshots

Gulf of Fonseca, Honduras



## Gulf of Fonseca, Honduras 1987-2011

Honduras is one of Latin America's top producers of cultured shrimp. Huge areas around the Gulf of Fonseca delta have been converted to shrimp farms. When active and filled, the ponds appear dark. When drained, the ponds are pink.

Date	Satellite	Bands	Res	Path	Row
Jan. 6, 1987	Landsat 5 TM	7,5,3	30 m	17	51
Jan. 8, 2011	Landsat 5 TM	7,5,3	30 m	17	51

### Earthshots: Satellite Images of Environmental Change

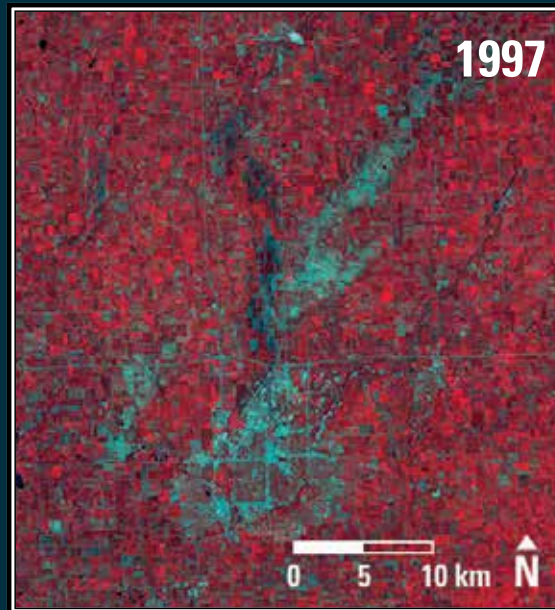
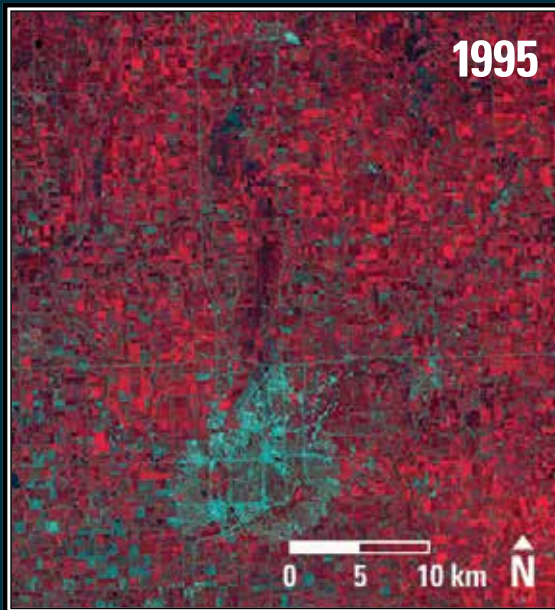
The U.S. Geological Survey Earth Resources Observation and Science (EROS) Center archives data from the Landsat satellites (1972–present). Earthshots presents environmental changes using Landsat images.





# Earthshots

Hailstorm, Sioux Falls, SD, USA



## Hailstorm, Sioux Falls, SD, USA 1995-1997

On Sunday, July 13, 1997, an unusually severe hailstorm just missed Sioux Falls, SD. But it pounded the surrounding cropland with baseball- to softball-sized hail. Healthy crops appear bright red. Some of these fields turned gray where the hailstorm converted the cropland into bare soil.

Date	Satellite	Bands	Res	Path	Row
July 27, 1995	Landsat 5 TM	4,3,2	30 m	29	30
July 16, 1997	Landsat 5 TM	4,3,2	30 m	29	30

### Earthshots: Satellite Images of Environmental Change

The U.S. Geological Survey Earth Resources Observation and Science (EROS) Center archives data from the Landsat satellites (1972–present). Earthshots presents environmental changes using Landsat images.



<http://earthshots.usgs.gov>

# Earthshots

Huang He Delta, China



## Huang He Delta, China 1979-2010

China's second longest river, the sediment-choked Huang He (Yellow River), is one of the muddiest rivers on earth. The sediments it carries are deposited at the river's mouth, where the beak-shaped delta protrudes into the sea.

Date	Satellite	Bands	Res	Path	Row
May 27, 1979	Landsat 3 MSS	6,7,4	79 m	130	34
Sept. 11, 2010	Landsat 5 TM	7,5,3	30 m	121	34

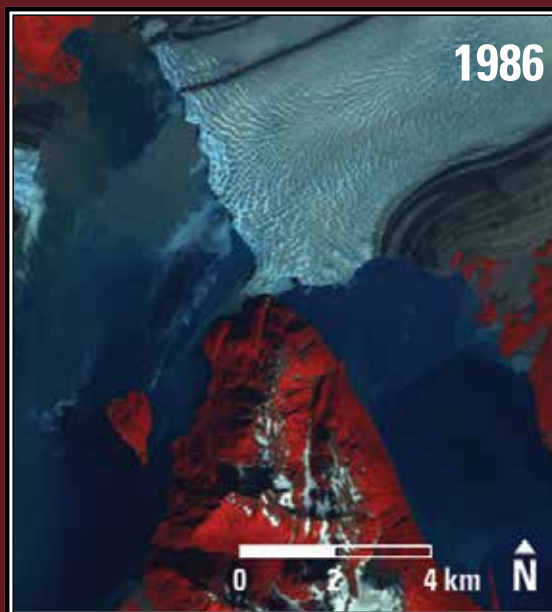
### Earthshots: Satellite Images of Environmental Change

The U.S. Geological Survey Earth Resources Observation and Science (EROS) Center archives data from the Landsat satellites (1972–present). Earthshots presents environmental changes using Landsat images.



## Earthshots

Hubbard Glacier, Alaska, USA



### Hubbard Glacier, Alaska, USA 1985-1986

An unusual event on the coast of Alaska was observed with satellite imagery in 1986. A glacier slid down a valley and blocked a fiord from the rest of the bay. The fiord then turned into a temporary lake. The water's level rose 25 meters before the glacier dam gave way a few months later.

Date	Satellite	Bands	Res	Path	Row
Aug. 7, 1985	Landsat 5 TM	4,3,2	30 m	62	18
Sept. 11, 1986	Landsat 5 TM	4,3,2	30 m	62	18

#### Earthshots: Satellite Images of Environmental Change

The U.S. Geological Survey Earth Resources Observation and Science (EROS) Center archives data from the Landsat satellites (1972–present). Earthshots presents environmental changes using Landsat images.



<http://earthshots.usgs.gov>



# Earthshots

Iguazú, South America



## Iguazú, South America 1973-2013

Iguazú National Park is the bright green in the lower right of these images. Deforestation begins in the 1973 image with the fishbone pattern in the upper left. The reservoir seen in the 2013 image formed behind the Itaipú Dam in 1982.

Date	Satellite	Bands	Res	Path	Row
Feb. 23, 1973	Landsat 1 MSS	7,5,4	79 m	240	78
Aug. 19, 2013	Landsat 8 OLI	7,5,3	30 m	224	78

### Earthshots: Satellite Images of Environmental Change

The U.S. Geological Survey Earth Resources Observation and Science (EROS) Center archives data from the Landsat satellites (1972–present). Earthshots presents environmental changes using Landsat images.



# Earthshots

IJsselmeer, Netherlands



## IJsselmeer, Netherlands 1973-2010

The IJsselmeer is a lake on the coast of the Netherlands (pronounced EYE-ssel-mare). People in the Netherlands have been using various strategies to control water levels for centuries. The south-central part of the images has converted from just drained to covered with active farming. Amsterdam can be seen in the lower left.

Date	Satellite	Bands	Res	Path	Row
Mar. 23, 1973	Landsat 1 MSS	7,5,4	79 m	214	23
Sept. 6, 2010	Landsat 5 TM	4,3,2	30 m	198	23,24

### Earthshots: Satellite Images of Environmental Change

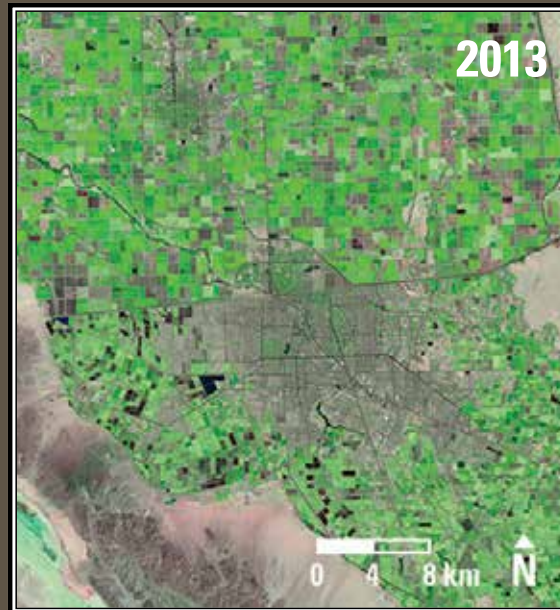
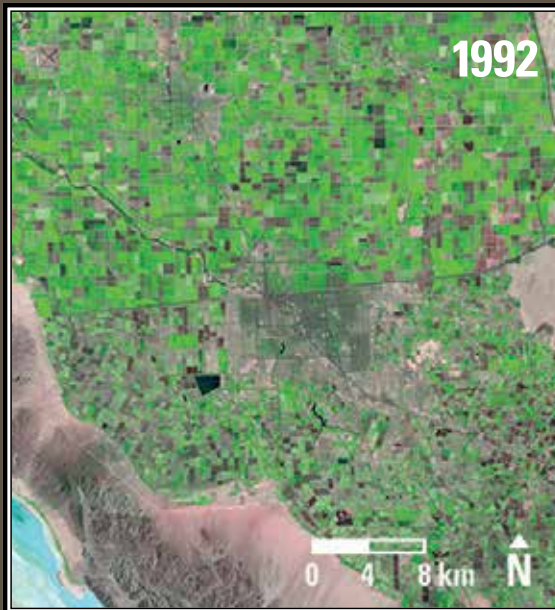
The U.S. Geological Survey Earth Resources Observation and Science (EROS) Center archives data from the Landsat satellites (1972–present). Earthshots presents environmental changes using Landsat images.



<http://earthshots.usgs.gov>

# Earthshots

Imperial Valley, California, USA



## Imperial Valley, California, USA 1992-2013

The Imperial Valley lies on the border of California and Mexico. The international border is visible because of the different intensity of vegetation, shown in bright green. The dark area in the upper left is the Salton Sea. The lower part of the images shows the growing cities of El Centro, Calexico, and Mexicali.

Date	Satellite	Bands	Res	Path	Row
June 30, 1992	Landsat 4 TM	7,4,2	30 m	39	37
June 16, 2013	Landsat 8 OLI	7,5,3	30 m	39	37

### Earthshots: Satellite Images of Environmental Change

The U.S. Geological Survey Earth Resources Observation and Science (EROS) Center archives data from the Landsat satellites (1972–present). Earthshots presents environmental changes using Landsat images.



<http://earthshots.usgs.gov>



# Earthshots

Isahaya Bay, Japan



## Isahaya Bay, Japan 1993-2010

The controversial Isahaya Bay Reclamation Project has been blamed for recent reduced harvests of fish and seaweed (nori). The 1993 image shows the bay before a sea wall was built. In the 2010 image, reclaimed land extends into the area lying behind the 7-km (4-mile) wall.

Date	Satellite	Bands	Res	Path	Row
May 15, 1993	Landsat 5 TM	7,5,3	30 m	113	37
Sept. 3, 2010	Landsat 5 TM	7,5,3	30 m	113	37

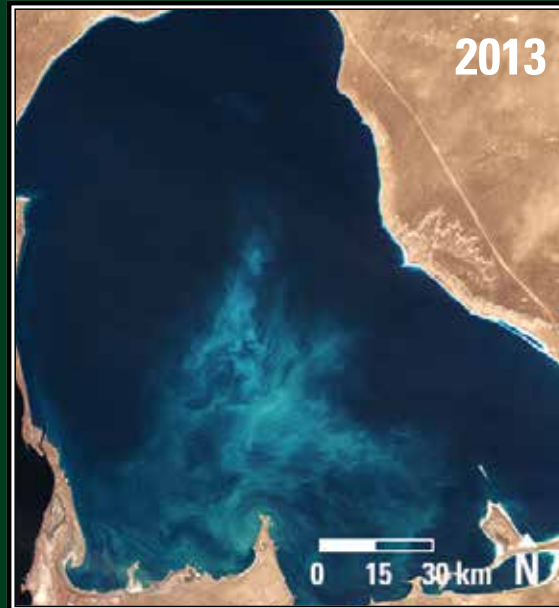
### Earthshots: Satellite Images of Environmental Change

The U.S. Geological Survey Earth Resources Observation and Science (EROS) Center archives data from the Landsat satellites (1972–present). Earthshots presents environmental changes using Landsat images.



# Earthshots

Kara-Bogaz-Gol, Turkmenistan



## Kara-Bogaz-Gol, Turkmenistan 1987-2013

This shallow lagoon of the Caspian Sea is called the Kara-Bogaz-Gol. Its water is far saltier than the Caspian, and its water level changes over time. The 1987 image shows the lagoon with little water, the light blue color indicating dry or shallowly covered salt beds. The 2013 image shows it full of water.

Date	Satellite	Bands	Res	Path	Row
Sept. 25, 1987	Landsat 5 TM	4,3,2	30 m	164	31,32
Aug. 31, 2013	Landsat 8 OLI	5,4,3	30 m	164	31,32

### Earthshots: Satellite Images of Environmental Change

The U.S. Geological Survey Earth Resources Observation and Science (EROS) Center archives data from the Landsat satellites (1972–present). Earthshots presents environmental changes using Landsat images.



<http://earthshots.usgs.gov>

# Earthshots

Lake Chad, West Africa



## Lake Chad, West Africa 1973-2013

Lake Chad lies between Chad, Niger, Nigeria, and Cameroon in West Africa. This area's prolonged drought and increased water use have shrunk the lake from about 25,000 km<sup>2</sup> in 1963 to less than 2,000 km<sup>2</sup> today. Old dunes are again uncovered, and wetlands (shown as green) have replaced open water.

Date	Satellite	Bands	Res	Path	Row
Jan. 1973	Landsat 1 MSS	5,7,4	79 m	198-199	50-51
May 2013	Landsat 8 OLI	7,5,4	30 m	184-186	50-52

### Earthshots: Satellite Images of Environmental Change

The U.S. Geological Survey Earth Resources Observation and Science (EROS) Center archives data from the Landsat satellites (1972-present). Earthshots presents environmental changes using Landsat images.



<http://earthshots.usgs.gov>



# Earthshots

Lake Hamoun, Iran



## Lake Hamoun, Iran 1976-2013

Lake Hamoun lies near the Iran-Afghanistan border. This closed basin receives most of its water from Afghanistan's Helmand River. In the mid-1970s, when rivers in Afghanistan were flowing well, the lake was full. But recent droughts have kept the lake nearly dry for the past decade.

Date	Satellite	Bands	Res	Path	Row
Nov. 14, 1976	Landsat 2 MSS	6,5,4	79 m	169	38,39
July 13, 2013	Landsat 8 OLI	5,4,3	30 m	157	38,39

### Earthshots: Satellite Images of Environmental Change

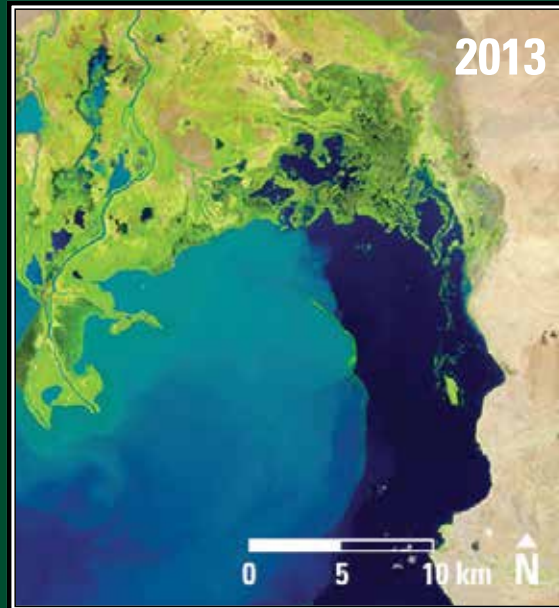
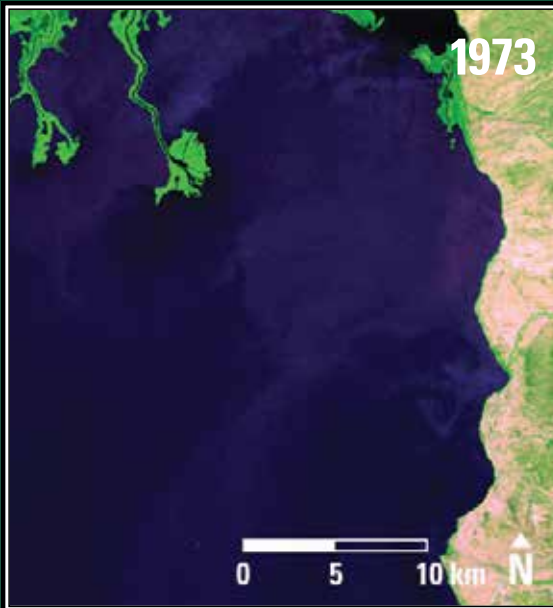
The U.S. Geological Survey Earth Resources Observation and Science (EROS) Center archives data from the Landsat satellites (1972–present). Earthshots presents environmental changes using Landsat images.



<http://earthshots.usgs.gov>

# Earthshots

Lake Turkana, Kenya and Ethiopia



## Lake Turkana, Kenya and Ethiopia 1973-2013

Lake Turkana lies in the Rift Valley of East Africa. These images show the delta of the Omo River, which provides more than 80% of the water to the lake. Bright green indicates aquatic vegetation on the Omo River delta. The delta expands and shrinks in response to the high rainfall variability in the region.

Date	Satellite	Bands	Res	Path	Row
Feb. 1, 1973	Landsat 1 MSS	5,7,4	79 m	182	57
July 1, 2013	Landsat 8 OLI	6,5,4	30 m	169	57

### Earthshots: Satellite Images of Environmental Change

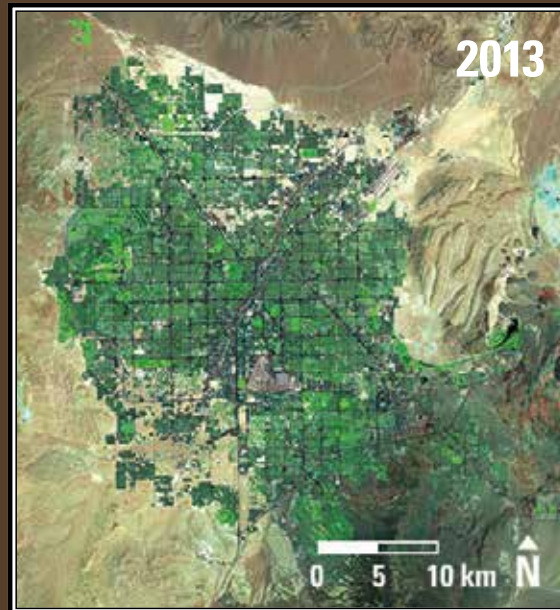
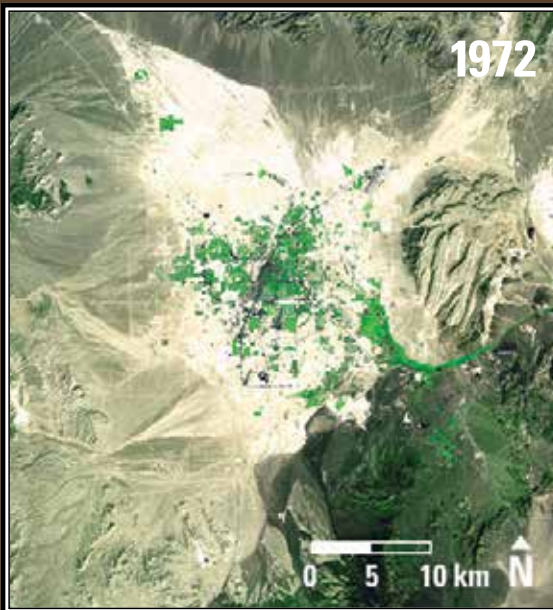
The U.S. Geological Survey Earth Resources Observation and Science (EROS) Center archives data from the Landsat satellites (1972–present). Earthshots presents environmental changes using Landsat images.



<http://earthshots.usgs.gov>

# Earthshots

Las Vegas, Nevada, USA



## Las Vegas, Nevada, USA 1972-2013

Between 1972 and 2013, the population of Las Vegas grew from 273,000 to over 2 million. Spurred by expansion of the gaming and tourism industries, Las Vegas is one of the fastest growing metropolitan areas in the United States. The urban growth is steadily infringing on the arid ecosystems surrounding the city.

Date	Satellite	Bands	Res	Path	Row
Sept. 13, 1972	Landsat 1 MSS	5,7,4	79 m	42	35
June 16, 2013	Landsat 8 OLI	7,5,4	30 m	39	35

### Earthshots: Satellite Images of Environmental Change

The U.S. Geological Survey Earth Resources Observation and Science (EROS) Center archives data from the Landsat satellites (1972–present). Earthshots presents environmental changes using Landsat images.

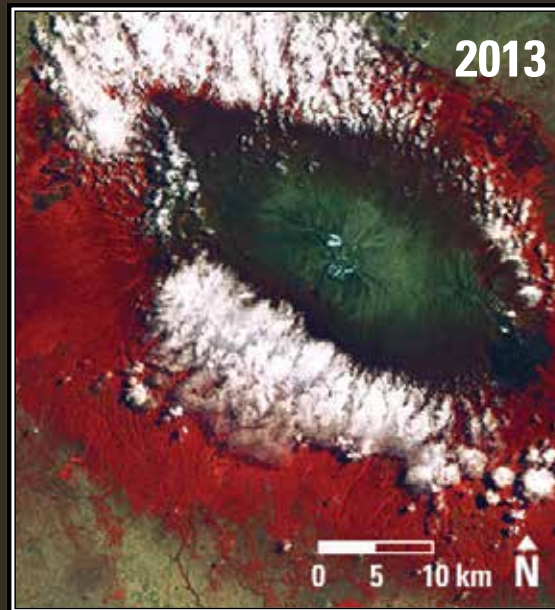


<http://earthshots.usgs.gov>



# Earthshots

Mount Kilimanjaro, Tanzania



## Mount Kilimanjaro, Tanzania 1976-2013

Though only about 200 miles from the equator, Mount Kilimanjaro has been capped by glaciers and snow for 11,000 years. Those glaciers are now shrinking. In these false-color images, vegetation appears red, and glaciers and snow bright white. White clouds surround the mountain in the 2013 image.

Date	Satellite	Bands	Res	Path	Row
Jan. 24, 1976	Landsat 2 MSS	7,5,4	79 m	180	62
Aug. 27, 2013	Landsat 8 OLI	5,4,1	30 m	168	62

### Earthshots: Satellite Images of Environmental Change

The U.S. Geological Survey Earth Resources Observation and Science (EROS) Center archives data from the Landsat satellites (1972–present). Earthshots presents environmental changes using Landsat images.



<http://earthshots.usgs.gov>

# Earthshots

Mount St. Helens, Washington, USA



## Mount St. Helens, Washington, USA 1973-1983

The eruption of Mount St. Helens on May 18, 1980, destroyed 150 square miles of forest, blew ash 15 miles into the air, and killed 60 people. The mountain's elevation dropped from 9,677 feet to 8,364 feet. Forest appears red; ash and mud appear gray. Ice and snow are white, and water is black.

Date	Satellite	Bands	Res	Path	Row
Sept. 15, 1973	Landsat 1 MSS	7,5,4	79 m	49	28
May 22, 1983	Landsat 4 MSS	4,2,1	79 m	46	28

### Earthshots: Satellite Images of Environmental Change

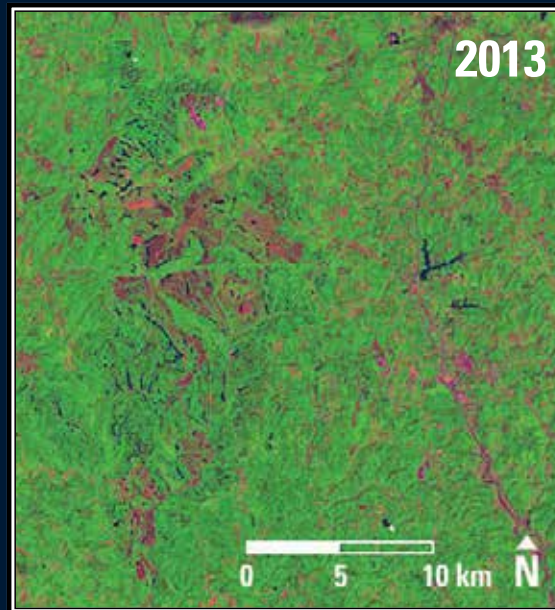
The U.S. Geological Survey Earth Resources Observation and Science (EROS) Center archives data from the Landsat satellites (1972–present). Earthshots presents environmental changes using Landsat images.



<http://earthshots.usgs.gov>

# Earthshots

Muskingum Mines, Ohio, USA



## Muskingum Mines, Ohio, USA 1985-2013

Strip mines in eastern Ohio show up as pink in these images. The reclaimed land is replanted as grassland or forest. In the 2013 image, some of the reclaimed former coal mines are distinguishable from the surrounding vegetation as mottled maroon and green.

Date	Satellite	Bands	Res	Path	Row
July 18, 1985	Landsat 5 TM	5,4,3	30 m	18	32
July 15, 2013	Landsat 8 OLI	7,5,1	30 m	18	32

### Earthshots: Satellite Images of Environmental Change

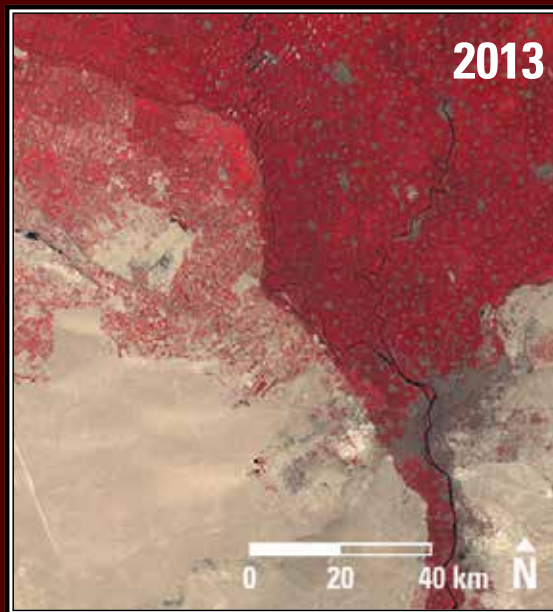
The U.S. Geological Survey Earth Resources Observation and Science (EROS) Center archives data from the Landsat satellites (1972–present). Earthshots presents environmental changes using Landsat images.





# Earthshots

Nile River Delta, Egypt



## Nile River Delta, Egypt 1972-2013

These images show the dramatic urban growth within the Nile River Delta and the expansion of agriculture into adjoining desert areas. Red indicates vegetation, and the contrast is clear between the lush vegetation of irrigated fields and the white or tan barren desert. Cairo is the gray expanse near the lower right.

Date	Satellite	Bands	Res	Path	Row
Aug. 31, 1972	Landsat 1 MSS	7,5,4	79 m	190	39
Aug. 3 and 10, 2013	Landsat 8 OLI	5,4,3	30 m	176,177	39

### Earthshots: Satellite Images of Environmental Change

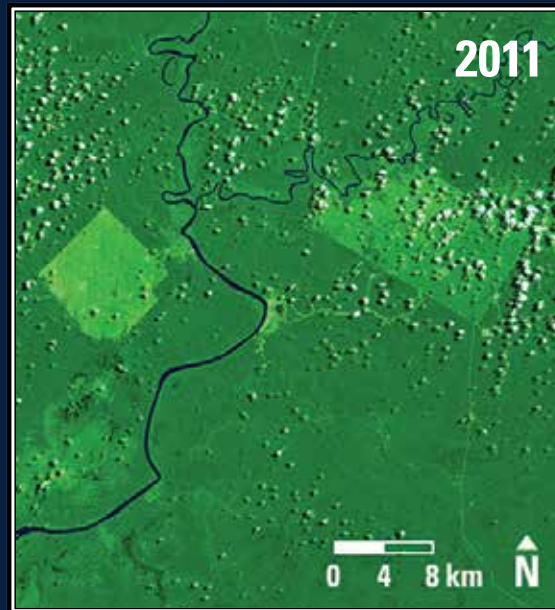
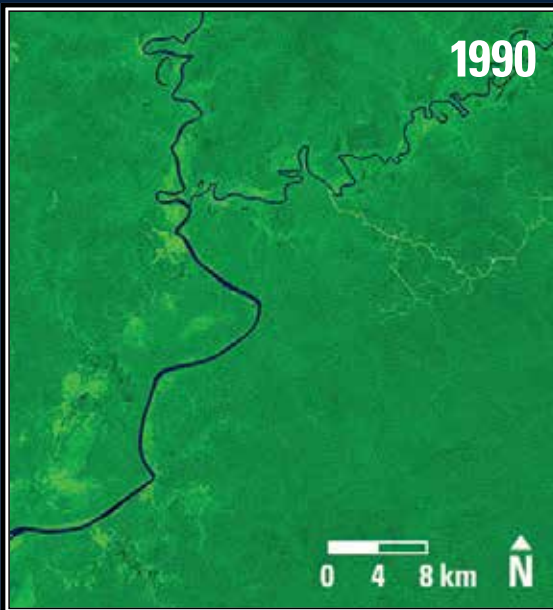
The U.S. Geological Survey Earth Resources Observation and Science (EROS) Center archives data from the Landsat satellites (1972–present). Earthshots presents environmental changes using Landsat images.



<http://earthshots.usgs.gov>

# Earthshots

Papua, Indonesia



## Papua, Indonesia 1990-2011

Papua is a province of Indonesia, which produces a little over half of the world's palm oil. The palm oil plantations show up clearly in Landsat images as the light green blocks in the middle of the undisturbed rain forest.

Date	Satellite	Bands	Res	Path	Row
Nov. 20, 1990	Landsat 5 TM	7,5,3	30 m	100	65
Apr. 4, 2011	Landsat 5 TM	7,5,3	30 m	100	65

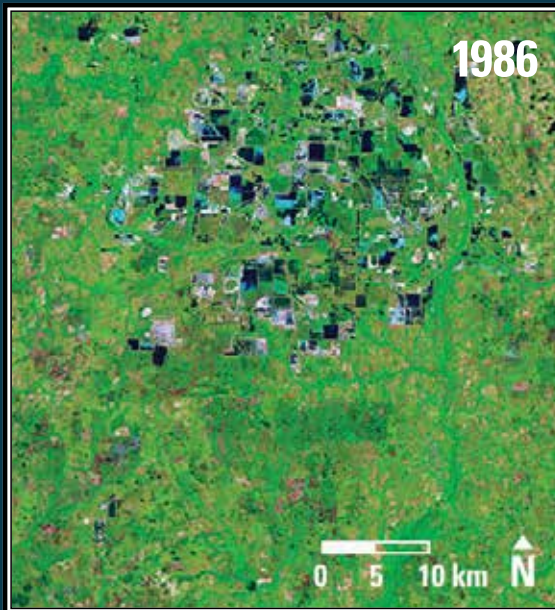
### Earthshots: Satellite Images of Environmental Change

The U.S. Geological Survey Earth Resources Observation and Science (EROS) Center archives data from the Landsat satellites (1972–present). Earthshots presents environmental changes using Landsat images.



# Earthshots

Phosphate Mines, Florida, USA



## Phosphate Mines, Florida, USA 1986-2013

The world's most productive source of phosphate, a critical nutrient for modern agriculture, lies south of Orlando, FL. These images show the expansion of the mined area. As the mines shift southward, the land is reclaimed and returns to green.

Date	Satellite	Bands	Res	Path	Row
Apr. 2, 1986	Landsat 5 TM	7,4,1	30 m	16	41
May 14, 2013	Landsat 8 OLI	7,5,1	30 m	16	41

### Earthshots: Satellite Images of Environmental Change

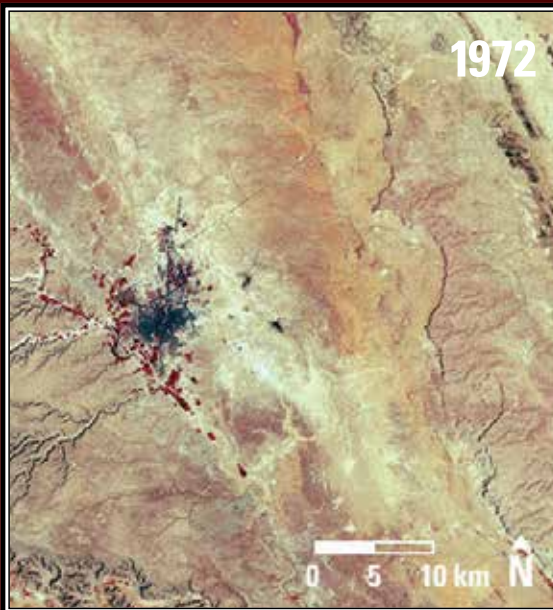
The U.S. Geological Survey Earth Resources Observation and Science (EROS) Center archives data from the Landsat satellites (1972–present). Earthshots presents environmental changes using Landsat images.





# Earthshots

Riyadh, Saudi Arabia



## Riyadh, Saudi Arabia 1972-2013

These images of Saudi Arabia’s capital show its rapid growth. The city grew from under a half million people in 1972 to over 5 million people in 2013. The street patterns appear as dark grids, and vegetation appears red.

Date	Satellite	Bands	Res	Path	Row
Sept. 24, 1972	Landsat 1 MSS	7,5,4	79 m	178	43
June 3, 2013	Landsat 8 OLI	5,4,3	30 m	165	43

### Earthshots: Satellite Images of Environmental Change

The U.S. Geological Survey Earth Resources Observation and Science (EROS) Center archives data from the Landsat satellites (1972–present). Earthshots presents environmental changes using Landsat images.



# Earthshots

Rondônia, Brazil



## Rondônia, Brazil 1975-2013

These images show tropical forest in western Brazil, where land has been cleared for farming and grazing. Cutting starts along roads and fans out to create a “fishbone” pattern. Deforested land and urban areas appear pink; healthy vegetation appears green.

Date	Satellite	Bands	Res	Path	Row
June 19, 1975	Landsat 2 MSS	6,7,5	79 m	249	67
Aug. 27, 2013	Landsat 8 OLI	7,6,4	30 m	232	67

### Earthshots: Satellite Images of Environmental Change

The U.S. Geological Survey Earth Resources Observation and Science (EROS) Center archives data from the Landsat satellites (1972–present). Earthshots presents environmental changes using Landsat images.



# Earthshots

San Antonio, Texas, USA



## San Antonio, Texas, USA 1974-2013

Suburban expansion is visible from space as shown on the western side of San Antonio, Texas. New residential areas push beyond outer loop highways. New retail development can be seen as small bright white shapes along these highways.

Date	Satellite	Bands	Res	Path	Row
Sept. 8, 1974	Landsat 1 MSS	6,5,4	79 m	29	40
Aug. 31, 2013	Landsat 8 OLI	5,4,3	30 m	27	40

### Earthshots: Satellite Images of Environmental Change

The U.S. Geological Survey Earth Resources Observation and Science (EROS) Center archives data from the Landsat satellites (1972–present). Earthshots presents environmental changes using Landsat images.





# Earthshots

Santa Cruz, Bolivia



## Santa Cruz, Bolivia 1975-2013

In a few decades, the lowlands surrounding Santa Cruz were transformed from dense forest into a grid-patterned expanse of agricultural lands. Many of these rectangular, light-colored fields are soybeans cultivated for export.

Date	Satellite	Bands	Res	Path	Row
June 17, 1975	Landsat 2 MSS	5,7,4	79 m	247	72
July 28, 2013	Landsat 8 OLI	7,5,3	30 m	230	72

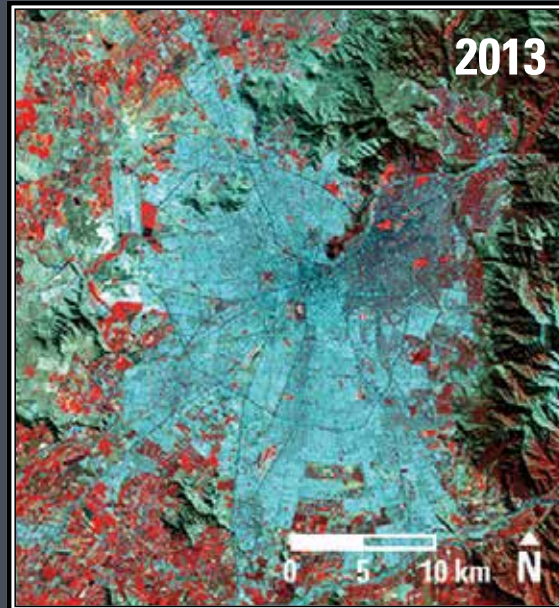
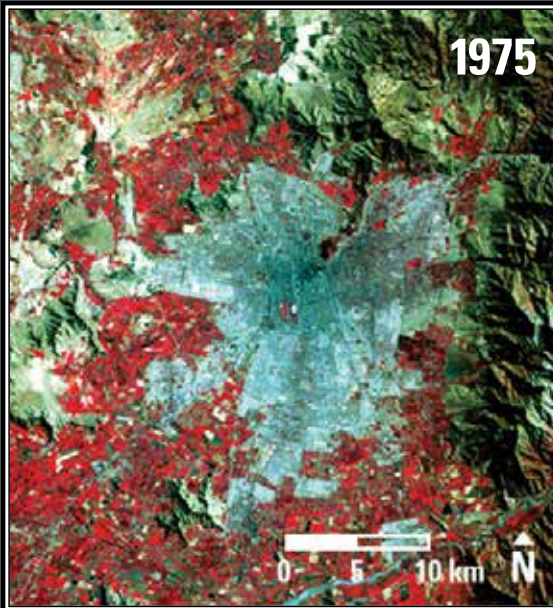
### Earthshots: Satellite Images of Environmental Change

The U.S. Geological Survey Earth Resources Observation and Science (EROS) Center archives data from the Landsat satellites (1972–present). Earthshots presents environmental changes using Landsat images.



# Earthshots

Santiago, Chile



## Santiago, Chile 1975-2013

From 1975 to 2013, Santiago's population increased from under 3.5 million to about 6 million. After World War II, Chile's population urbanized earlier than many other countries, already 68% urban by 1960 and 89% by 2010. Agricultural lands west and south of the city are shown in bright red. The Andes Mountains are to the east.

Date	Satellite	Bands	Res	Path	Row
Mar. 22, 1975	Landsat 2 MSS	6,5,4	79 m	250	83
Apr. 12, 2013	Landsat 8 OLI	5,4,3	30 m	233	83

### Earthshots: Satellite Images of Environmental Change

The U.S. Geological Survey Earth Resources Observation and Science (EROS) Center archives data from the Landsat satellites (1972–present). Earthshots presents environmental changes using Landsat images.



<http://earthshots.usgs.gov>

# Earthshots

Selkirk Island, Chile



## Selkirk Island, Chile 1999

These swirling clouds appeared over Selkirk Island in the southern Pacific Ocean. The island's highest point is nearly a mile (1.6 km) above sea level. Wind-driven clouds flow around this obstacle and form these large, spinning eddies. The second image is a closer look at the well-defined swirls nearest to the island.

Date	Satellite	Bands	Res	Path	Row
Sept. 15, 1999	Landsat 7 ETM+	7,4,1	30 m	6	83

### Earthshots: Satellite Images of Environmental Change

The U.S. Geological Survey Earth Resources Observation and Science (EROS) Center archives data from the Landsat satellites (1972–present). Earthshots presents environmental changes using Landsat images.



<http://earthshots.usgs.gov>



# Earthshots

## Singapore



### Singapore 1973-2009

These images show the island-nation of Singapore, where new land is being created for airports, shipping, and oil refineries. Vegetation is green and water is blue-black. Bare soil and pavement look almost pale or pink. Singapore is often cloudy; these images are among the clearest in the archive.

Date	Satellite	Bands	Res	Path	Row
Oct. 17, 1973	Landsat 1 MSS	6,7,5	79 m	134	59
Feb. 8, 2009	Landsat 5 TM	7,5,3	30 m	125	59

### Earthshots: Satellite Images of Environmental Change

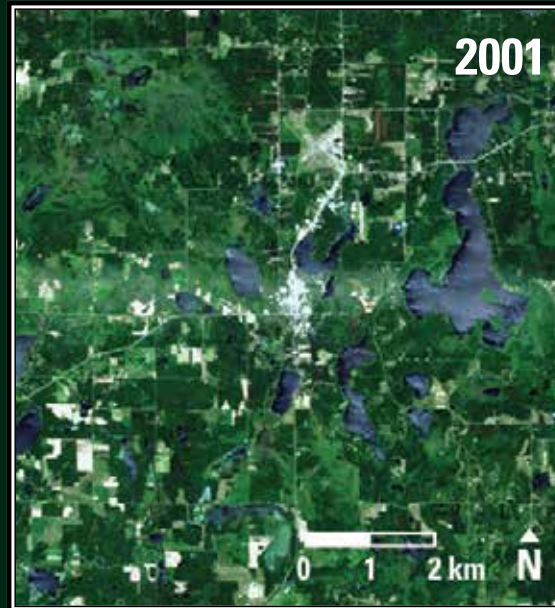
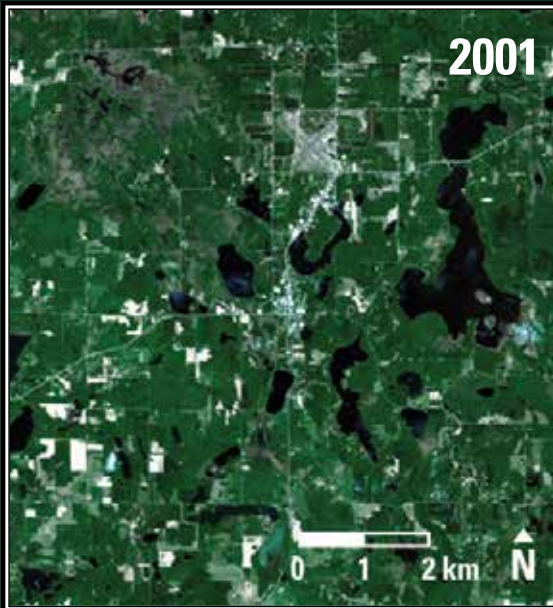
The U.S. Geological Survey Earth Resources Observation and Science (EROS) Center archives data from the Landsat satellites (1972–present). Earthshots presents environmental changes using Landsat images.



<http://earthshots.usgs.gov>

# Earthshots

Siren, Wisconsin, USA



## Siren, Wisconsin, USA 2001

An F3 tornado struck Siren, WI, on June 18, 2001. The tornado cut a west-to-east swath half a mile wide and more than 20 miles long. These images are shown in simulated natural color. The lakes look brighter on June 19 than on May 18, most likely from the sun glinting off waves.

Date	Satellite	Bands	Res	Path	Row
May 18, 2001	Landsat 7 ETM+	3,2,1	30 m	27	28
June 19, 2001	Landsat 7 ETM+	3,2,1	30 m	27	28

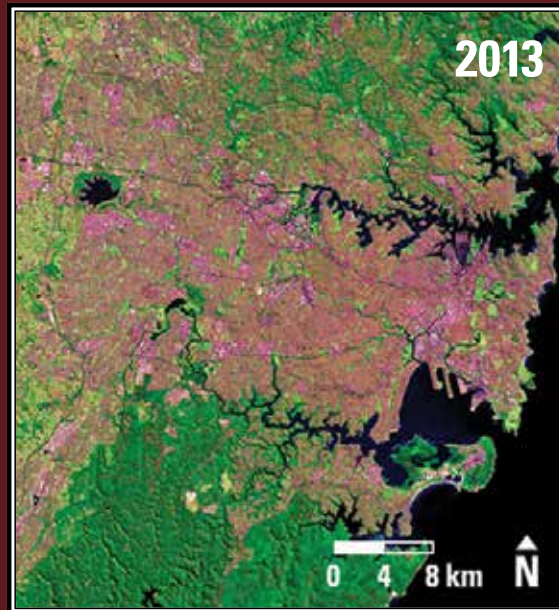
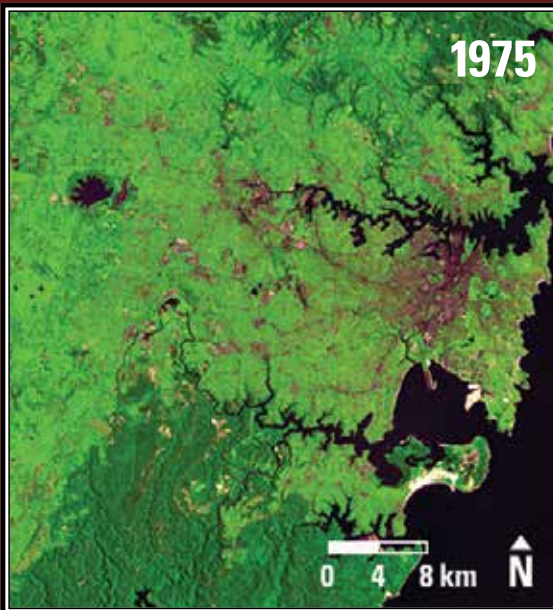
### Earthshots: Satellite Images of Environmental Change

The U.S. Geological Survey Earth Resources Observation and Science (EROS) Center archives data from the Landsat satellites (1972–present). Earthshots presents environmental changes using Landsat images.



# Earthshots

Sydney, Australia



## Sydney, Australia 1975-2013

With over 4.5 million people, Sydney is Australia's largest city. Except for the shoreline to the east, national parks and preserves surround Sydney on all sides. Over the past several decades, Sydney's expansion has been mostly westward, toward the Blue Mountains.

Date	Satellite	Bands	Res	Path	Row
Oct. 12, 1975	Landsat 2 MSS	5,7,4	79 m	95	84
Aug. 17, 2013	Landsat 8 OLI	7,5,3	30 m	89	84

### Earthshots: Satellite Images of Environmental Change

The U.S. Geological Survey Earth Resources Observation and Science (EROS) Center archives data from the Landsat satellites (1972–present). Earthshots presents environmental changes using Landsat images.





# Earthshots

Toshka Project, Egypt



## Toshka Project, Egypt 2001-2013

Egypt's Toshka Project diverted water from the Nile River to the Sahara Desert. The project's lofty goal was to cultivate a half million acres of land and create a "second Nile Valley." The Toshka lakes formed in 1998 and reached a peak in size in 2001. Since then, the lakes have been shrinking.

Date	Satellite	Bands	Res	Path	Row
Aug. 19 and 26, 2001	Landsat 7 ETM+	7,4,2	30 m	175,176	44
Aug. 19 and 28, 2013	Landsat 8 OLI	7,5,3	30 m	175,176	44

### Earthshots: Satellite Images of Environmental Change

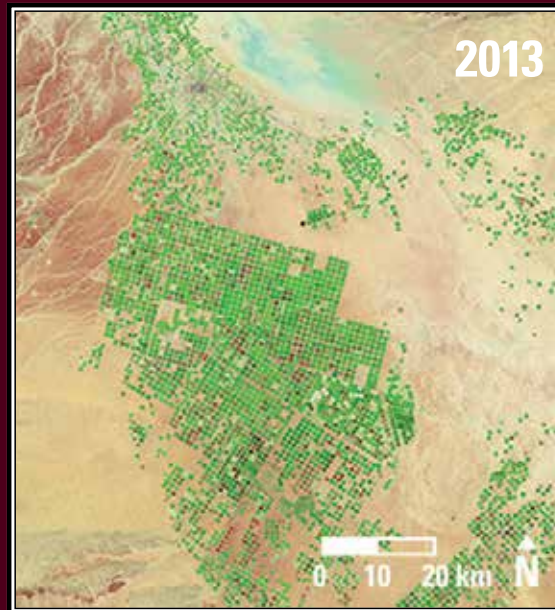
The U.S. Geological Survey Earth Resources Observation and Science (EROS) Center archives data from the Landsat satellites (1972–present). Earthshots presents environmental changes using Landsat images.



<http://earthshots.usgs.gov>

# Earthshots

Wadi As-Sirhan Basin, Saudi Arabia



## Wadi As-Sirhan Basin, Saudi Arabia 1986-2013

These two images reveal the effects of center-pivot irrigation systems in Saudi Arabia's desert region known as Wadi As-Sirhan. This landscape has been transformed from wasteland into cropland covered with circular green fields. The fields are watered with groundwater, which in this arid region is a nonrenewable resource.

Date	Satellite	Bands	Res	Path	Row
Feb. 2, 1986	Landsat 5 TM	7,4,2	30 m	172	39
Aug. 23, 2013	Landsat 8 OLI	7,5,3	30 m	172	39

### Earthshots: Satellite Images of Environmental Change

The U.S. Geological Survey Earth Resources Observation and Science (EROS) Center archives data from the Landsat satellites (1972–present). Earthshots presents environmental changes using Landsat images.



<http://earthshots.usgs.gov>

# Earthshots

Wyperfeld National Park, Australia



## Wyperfeld National Park, Australia 2000-2003

Native shrubland—the Australian “bush”—appears deep red and distinguishes Wyperfeld National Park in western Victoria, Australia. Fires sweep the park almost yearly. The age of the burn scars can be estimated by their color; old scars are almost as darkly red as the bush, partially regrown areas are lighter red, and the newest scars are bright.

Date	Satellite	Bands	Res	Path	Row
June 13, 2000	Landsat 7 ETM+	4,3,2	30 m	95	85
Apr. 3, 2003	Landsat 7 ETM+	4,3,2	30 m	95	85

### Earthshots: Satellite Images of Environmental Change

The U.S. Geological Survey Earth Resources Observation and Science (EROS) Center archives data from the Landsat satellites (1972–present). Earthshots presents environmental changes using Landsat images.

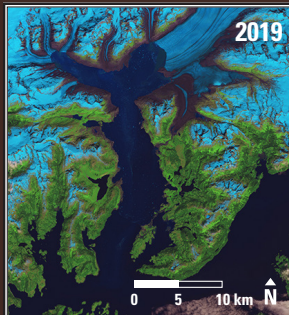
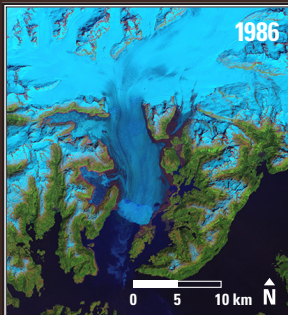


<http://earthshots.usgs.gov>



## Earthshots

Columbia Glacier, Alaska, USA



### Columbia Glacier, Alaska, USA 1986–2019

Since 1980, the terminus of Columbia Glacier has retreated 20 kilometers, making it one of the most rapidly changing glaciers in the world. A 300-meter deep fjord now replaces the portion of the valley once occupied by the glacier.

Date	Satellite	Bands	Res	Path	Row
June 26, 1986	Landsat 5 TM	7,4,2	30 m	67	17
June 21, 2019	Landsat 8 OLI	7,5,3	30 m	67	17

#### Earthshots: Satellite Images of Environmental Change

The U.S. Geological Survey Earth Resources Observation and Science (EROS) Center archives data from the Landsat satellites (1972–present). Earthshots presents environmental changes using Landsat images.

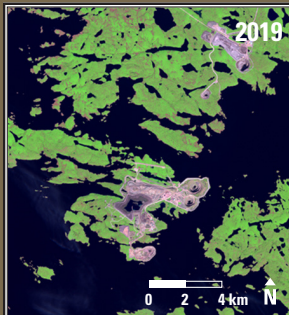
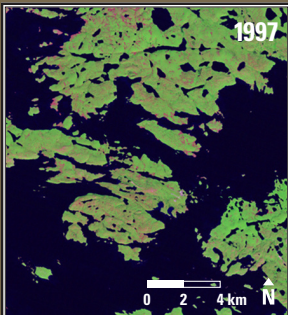


<http://earthshots.usgs.gov>

09/20

## Earthshots

Diamond Mines, Northwest Territories, Canada



### Diamond Mines, Northwest Territories, Canada 1997–2019

Diamonds are created under intense heat and pressure, yet they are mined in the frozen tundra of northern Canada. Some of the diamond ore is under Lac de Gras, so these mine pits of the Diavik Mine were built in the lake.

Date	Satellite	Bands	Res	Path	Row
Aug. 17, 1997	Landsat 5 TM	7,4,2	30 m	45	15
July 29, 2019	Landsat 8 OLI	7,5,1	30 m	45	15

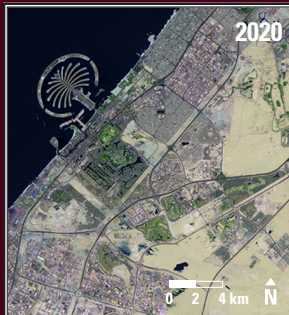
#### Earthshots: Satellite Images of Environmental Change

The U.S. Geological Survey Earth Resources Observation and Science (EROS) Center archives data from the Landsat satellites (1972–present). Earthshots presents environmental changes using Landsat images.



## Earthshots

Dubai, United Arab Emirates



### Dubai, United Arab Emirates 1984–2020

As Dubai expands, roads, buildings, and irrigated fields spread out over the desert. But the most prominent project in Dubai, and an impressive engineering feat, is the artificial islands built off its coast. The islands were built from sand dredged from the sea floor.

Date	Satellite	Bands	Res	Path	Row
Apr. 29, 1984	Landsat 5 TM	7,4,2	30 m	160	43
June 19, 2020	Landsat 8 OLI	7,6,4	30 m	160	43

#### Earthshots: Satellite Images of Environmental Change

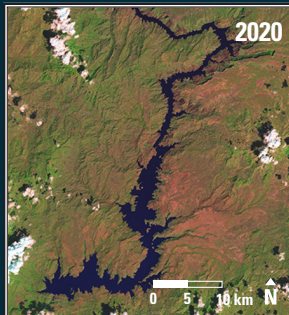
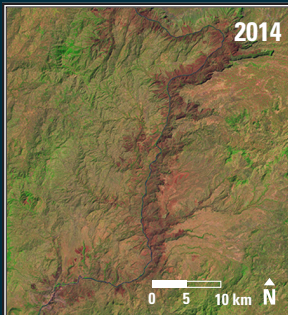
The U.S. Geological Survey Earth Resources Observation and Science (EROS) Center archives data from the Landsat satellites (1972–present). Earthshots presents environmental changes using Landsat images.





## Earthshots

Gibe III Dam, Ethiopia



### Gibe III Dam, Ethiopia 2014–2020

Large hydropower projects can have a massive effect on the landscape. At nearly 244 meters tall, Gibe III is Africa’s tallest dam and the continent’s third largest hydroelectric plant. The reservoir, now 155 kilometers long, began filling in February 2015. The reservoir fills the entire canyon that the river flowed through.

Date	Satellite	Bands	Res	Path	Row
Jan. 25, 2014	Landsat 8 OLI	7,5,4	30 m	169	55
Jan. 10, 2020	Landsat 8 OLI	7,5,4	30 m	169	55

#### Earthshots: Satellite Images of Environmental Change

The U.S. Geological Survey Earth Resources Observation and Science (EROS) Center archives data from the Landsat satellites (1972–present). Earthshots presents environmental changes using Landsat images.



<http://earthshots.usgs.gov>

09/20

## Earthshots

Hurricane Katrina, New Orleans, Louisiana, USA



### Hurricane Katrina, New Orleans, Louisiana, USA 2005

Hurricane Katrina was one of the most intense and costliest hurricanes to hit the United States. It made landfall the morning of August 29, 2005, as a strong category 3 storm with sustained winds of 125 miles per hour. These Landsat images show the region of storm damage. The flooded areas are dark, giving the city a bruised appearance.

Date	Satellite	Bands	Res	Path	Row
Aug. 22, 2005	Landsat 5 TM	5,4,3	30 m	22	39
Sept. 7, 2005	Landsat 5 TM	5,4,3	30 m	22	39

#### Earthshots: Satellite Images of Environmental Change

The U.S. Geological Survey Earth Resources Observation and Science (EROS) Center archives data from the Landsat satellites (1972–present). Earthshots presents environmental changes using Landsat images.

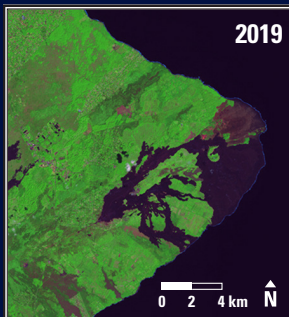
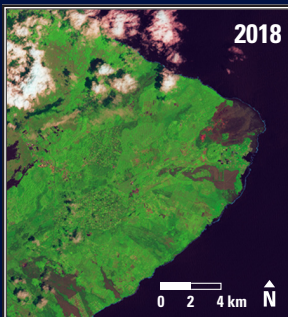


<http://earthshots.usgs.gov>

09/20

## Earthshots

Kīlauea, Hawaii, USA



### Kīlauea, Hawaii, USA 2018–2019

In 2018, Hawaii was in the news as fresh lava covered 13.7 square miles (35.5 km<sup>2</sup>) of the eastern tip of the Big Island. The lava flows were from Kīlauea, one of the world's most active volcanoes. This eruptive event started April 30, 2018, and ended on August 4, 2018.

Date	Satellite	Bands	Res	Path	Row
Mar. 27, 2018	Landsat 8 OLI	7,5,4	30 m	62	47
Feb. 26, 2019	Landsat 8 OLI	7,5,4	30 m	62	47

#### Earthshots: Satellite Images of Environmental Change

The U.S. Geological Survey Earth Resources Observation and Science (EROS) Center archives data from the Landsat satellites (1972–present). Earthshots presents environmental changes using Landsat images.



<http://earthshots.usgs.gov>

09/20



## Earthshots

Salar de Atacama, Chile



### Salar de Atacama, Chile 1991–2020

This desolate salt flat is one of the world's largest sources of lithium, a key ingredient in rechargeable batteries. The rectangular shapes are evaporation ponds, which vary in color because of varying amounts of salts in the water. The brighter ponds contain more concentrated salts, and the deep blue ponds indicate more water content.

Date	Satellite	Bands	Res	Path	Row
Dec. 28, 1991	Landsat 5 TM	4,3,1	30 m	233	76
Jan. 26, 2020	Landsat 8 OLI	5,4,1	30 m	233	76

#### Earthshots: Satellite Images of Environmental Change

The U.S. Geological Survey Earth Resources Observation and Science (EROS) Center archives data from the Landsat satellites (1972–present). Earthshots presents environmental changes using Landsat images.

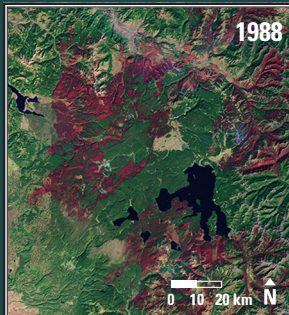
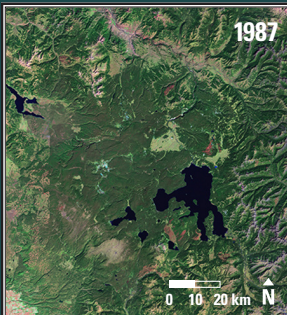


<http://earthshots.usgs.gov>

09/20

## Earthshots

Yellowstone National Park, USA



### Yellowstone National Park, USA 1987–1988

Dry conditions, along with dry cold fronts that brought lightning but no rain, created extreme fire danger in the summer of 1988. These images show old forest as dark green, occasionally broken up by lighter green grassy meadows or plains. Land just burned is dark red. More than 793,000 acres, or 36% of the park, burned that summer.

Date	Satellite	Bands	Res	Path	Row
Sept. 22, 1987	Landsat 5 TM	7,4,2	30 m	38	29
Oct. 10, 1988	Landsat 5 TM	7,4,2	30 m	38	29

#### Earthshots: Satellite Images of Environmental Change

The U.S. Geological Survey Earth Resources Observation and Science (EROS) Center archives data from the Landsat satellites (1972–present). Earthshots presents environmental changes using Landsat images.



<http://earthshots.usgs.gov>

