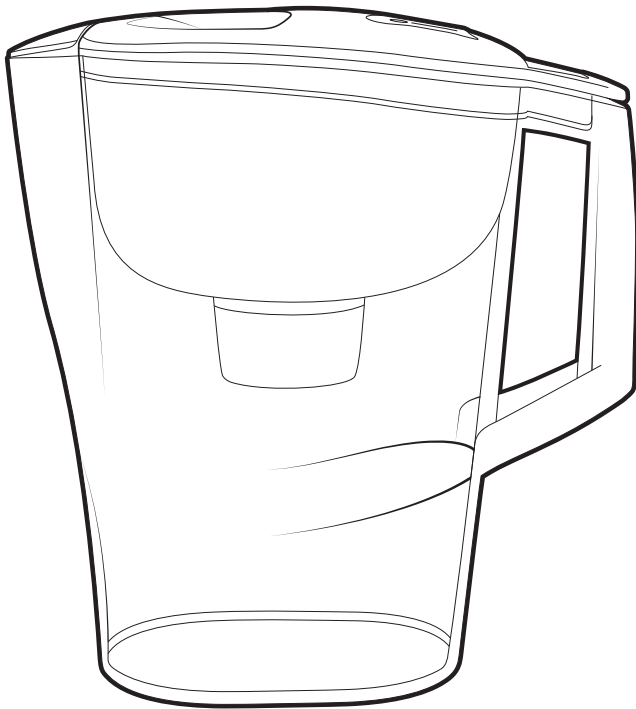


amazonbasics



10-Cup Water Pitcher with Filter

Pichet de 10 Tasses Muni d'Un Filtre

Jarro de Agua De 10 Tazas Con Filtro

B07YT18P21

English	3
Français	11
Español	20

IMPORTANT SAFEGUARDS



Read these instructions carefully and keep them for future use. If this product is passed to a third party, then these instructions must be included.



When using the product, basic safety precautions should always be followed to reduce the risk of injury including the following:

- The water filter system is designed for use only with microbiologically and chemically safe drinking water (municipally treated tap water or water from private supplies which has been tested as safe to drink). Do not use with water that is microbiologically unsafe or of unknown quality without adequate disinfection before or after the system. If an instruction is received from authorities that water must be boiled, the filtered water must also be boiled. When the instruction to boil water is no longer in force, the entire system must be properly cleaned and a new cartridge inserted.
- Filter cold water only (maximum temperature: 85 °F / 29 °C, minimum temperature: 33 °F / 0.6 °C).
- For certain groups of people (e.g. those with impaired immunity and for babies), it is generally recommended that tap water should be boiled; this also applies to filtered water. Irrespective of the water used, you should use utensils with stainless steel, such as kettles and saucepans, to boil the water. In particular, people who are sensitive to nickel should use appliances made of stainless steel or kettles with concealed elements.
- The filter has been specially treated with silver to preserve the filter media and inhibit the growth of bacteria that may affect the filter media. The antimicrobial properties of the treated filter media do not protect users or others against bacteria, viruses, germs or other disease organisms. A very small amount of silver may be transferred to the water. This transference would be within the World Health Organization (WHO) guidelines.
- During the filtering process, there may be a slight increase in potassium content. Note that 0.26 gallons (1 liter) of filtered water contains less potassium than an apple or banana. However, if you have kidney disease and/or follow a potassium-restricted diet, we recommend that you consult your doctor before using a water filter.
- Like any natural product, the consistency of activated carbon is subject to natural variance. This can lead to a slight abrasion of small carbon particles into your filtered water, noticeable as black bits. These particles have no negative health effects and are not harmful if consumed. In case you observe carbon particles, we recommend flushing the filter several times until the black bits disappear.

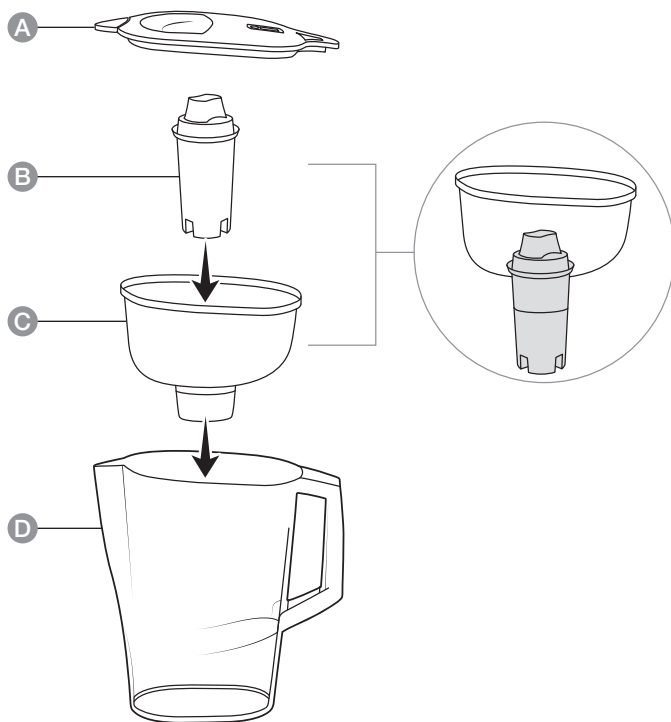
SAVE THESE INSTRUCTIONS



Intended Use

- This product is intended for household use only. It is not intended for commercial use.
- No liability will be accepted for damages resulting from improper use or non-compliance with these instructions.

Product Description



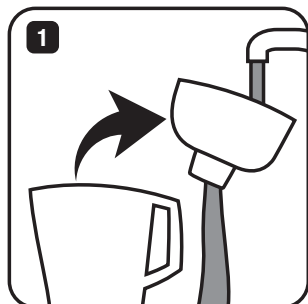
- | | | | |
|----------|----------------------------------|----------|-----------|
| A | Lid with filter-change indicator | C | Reservoir |
| B | Water filter cartridge | D | Pitcher |

Before First Use

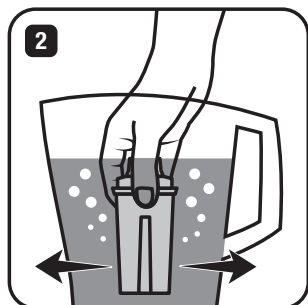
- Check the product for transport damages.
- Remove all the packing materials.
- Clean the product before first use.

⚠ DANGER Risk of suffocation! Keep any packaging materials away from children – these materials are a potential source of danger, e.g. suffocation.

Instructions For Use



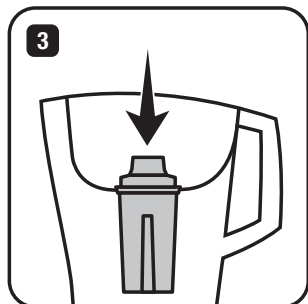
Clean the lid, pitcher and reservoir with a mild detergent, not an abrasive cleaner. The pitcher and the reservoir may be washed in the dishwasher (max. 122 °F / 50 °C). The lid is not dishwasher-safe and must be hand-washed.



To prepare your water filter cartridge, remove the protective wrapper.

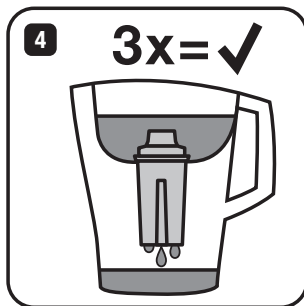
NOTICE The new filter may be damp from the steam treatment process.

Immerse the filter cartridge in cold water for a few seconds and shake it gently to remove any air bubbles.



Place the filter cartridge in the hollow of the reservoir and press firmly down. Ensure the cartridge is placed squarely in the holder.



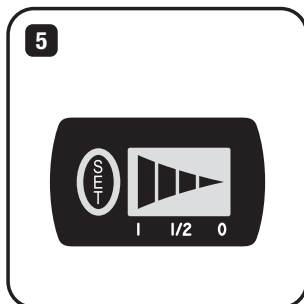


Fill the reservoir with cold tap water and allow the water to filter through. Discard the first two fillings. These first two fillings are used to flush and prepare the filter cartridge. Now re-fill the reservoir and the system is ready for use.

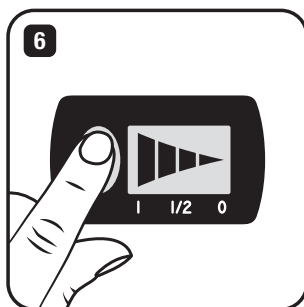
Filter replacement

- For optimum performance, replace the filter after 40 gallons / 151 liters or approximately once every 2 months for an average family. You may need to change your filter cartridge more often depending on the amount of water you consume and/or the degree of water hardness. AmazonBasics Replacement Filters are available as B07YT16TMS (3-pack) and B07YT1NTCX (6-pack)

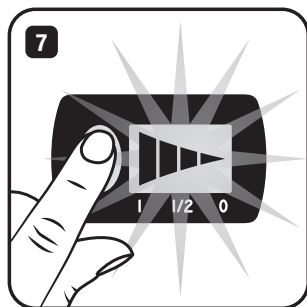
Starting/resetting the electronic filter change indicator



The electronic filter-change indicator measures the recommended time of use of your filter cartridge and automatically reminds you when to change it. The indicator needs to be reset every time a new filter cartridge is inserted.



To start the indicator, press and hold down the **SET** button until all four bars appear in the display and flash twice. The indicator is now set.



After 15 days/filter one bar will disappear to show the remaining cartridge life. Change the cartridge when all the bars have disappeared after approximately 2 months (60 days). A new filter cartridge should be prepared and inserted and the indicator reset as above.

- At the end of the indicator life, remember that it is an electronic device and to dispose of it according to all applicable provisions and regulations. To remove the exhausted indicator, place the screwdriver in the notch next to the indicator and push it out.

NOTICE The indicator should not be removed for any other reason than to dispose of it.

Cleaning and Maintenance

- Keep your water filter system out of sunlight and away from heating elements, e.g. oven, stove, coffee machine. We recommend you store your water filter in a cool and dry place.
- Consume filtered water within 1 day.
- Wash the parts of your filter system regularly in warm soapy water, at least every time you change the filter cartridge. Do not use any abrasive cleaners.

NOTICE The jug and the reservoir may be washed in the dishwasher (max. 122 °F / 50 °C). The lid must not be washed in the dishwasher due to the electronic filter-change indicator.

- Should your system not be in use for a prolonged period (e.g. vacation), we recommend that you take out the filter cartridge, discard any water left inside the water filter and insert the filter again. Before using the water filter again, repeat steps 1 to 4 in “Instructions For Use”.
- If your water filter pitcher has been in contact with food that is likely to cause discoloration (e.g. tomato ketchup, mustard), clean your pitcher promptly. To avoid possible discoloration of your pitcher, do not include it in a dishwasher containing dirty dishes from such foods.





Specifications / Performance Data Sheet

AmazonBasics 10-Cup Water Pitcher with Filter Model # 1038354 ASIN B07YT18P21

AmazonBasics Replacement Filters: available models #1038346 ASIN B07YT16TMS (3-pack), #1038349 ASIN B07YT1NTCX (6-pack)

These products are for markets of the US and Canada.

Rated capacity:	40 gallons (151 L)
Recommended use:	2 gallons (7.6 L) per day
Rated service flow:	2gd
Recommended filter replacement:	every 2 months

You may need to change your filter cartridge more often depending on the amount of water you consume and/or the degree of water hardness.

NOTICE Read this performance data sheet and compare the capabilities of this unit with your actual water treatment needs. It is recommended that, before purchasing a water treatment unit, you have your water supply tested to determine your actual needs.

System is tested and certified by the WQA against NSF/ANSI 42 and 53 for the reduction of: Chlorine taste and odor, copper, mercury and benzene. Reduction of limescale is internally tested and not certified by WQA. The concentration of the indicated substances in water entering the system was reduced to a concentration less than or equal to the permissible limit for water leaving the system, as specified in NSF/ANSI 42 and 53.

Substance	Max. Permissible Product Water Concentration [mg/L]	Avg. Influent Concentration [mg/L]
Standard 42 Aesthetic Effects		
Chlorine Taste & Odor	reduction \geq 50%	2.13
Standard 53 Health Effects		
Copper 6.5	1.3	3.10
Copper 8.5	1.3	3.00
Mercury 6.5	0.002	0.0062
Mercury 8.5	0.002	0.0062
Benzene	0.005	0.0161

Substance	Max. Effluent Concentration [mg/L]	Avg. Effluent Concentration [mg/L]
Standard 42 Aesthetic Effects		
Chlorine Taste & Odor	0.38	0.17
Standard 53 Health Effects		
Copper 6.5	0.86	0.73
Copper 8.5	0.82	0.54
Mercury 6.5	0.00048	0.00033
Mercury 8.5	0.00072	0.00059
Benzene	0.0023	0.00182

Substance	Lowest % Reduction [%]	Avg. % Reduction [%]
Standard 42 Aesthetic Effects		
Chlorine Taste & Odor	86.57	92.0
Standard 53 Health Effects		
Copper 6.5	72.1	76.1
Copper 8.5	73.1	82.3
Mercury 6.5	92.3	94.6
Mercury 8.5	88.3	90.4
Benzene	85.9	88.7

Refer to “Cleaning and Maintenance” and “Instructions For Use” in this user manual for general use and care instructions.

This system conforms to NSF/ANSI 42 and 53 for the specific performance claims as verified and substantiated by test data. While testing was performed under standard laboratory conditions, actual performance may vary. The contaminants or other substances removed or reduced by this water treatment system are not necessarily in your water.

System tested and certified by the WQA against NSF/ANSI Standard 42 and 53.

Replacement filters are available at www.amazon.com



C US



Feedback and Help

Love it? Hate it? Let us know with a customer review.

AmazonBasics is committed to delivering customer-driven products that live up to your high standards. We encourage you to write a review sharing your experiences with the product.



amazon.com/review/review-your-purchases#



amazon.com/gp/help/customer/contact-us

amazonbasics

amazon.com/AmazonBasics

MADE IN POLAND
FABRIQUÉ EN POLOGNE
HECHO EN POLONIA

V05-12/19