

# SPECIALIZED USER MANUAL

## CHARGER (SBC-C04 / SBC-C05 / SBC-C06 / SBC-C07)



THIS BRIEF USER MANUAL CONTAINS IMPORTANT SAFETY INFORMATION. PLEASE READ CAREFULLY AND STORE IN A SAFE PLACE.

This user manual is specific to your Specialized Turbo (e-bike) charger. It contains important safety, performance, and technical information, which you should read before your first use and keep for reference. You should also read the entire user manual specific to your Specialized Turbo bicycle, including instructions and information regarding the battery and the charging thereof, and the [Specialized Bicycle Owner's Manual](#) ("Owner's Manual"), because they have additional important general information and instructions which you should follow. If you do not have a copy of these documents, you can download them at no cost at [www.specialized.com](http://www.specialized.com), or obtain them from your nearest Authorized Specialized Retailer or Specialized Rider Care.

When reading this manual, you will note various important symbols and warnings, which are explained below:



**WARNING!** The combination of this symbol and word indicates a potentially hazardous situation which, if not avoided, could result in serious injury or death. Many of the Warnings say "you may lose control and fall." Because any fall can result in serious injury or even death, we do not always repeat the warning of possible injury or death.



**CAUTION:** The combination of the safety alert symbol and the word CAUTION indicates a potentially hazardous situation, which, if not avoided, may result in minor or moderate injury, or is an alert against unsafe practices.

The word **CAUTION** used without the safety alert symbol indicates a situation which, if not avoided, could result in serious damage to the bicycle or the voiding of your warranty.



**INFO:** This symbol alerts the reader to information which is particularly important.

### INSTRUCTIONS PERTAINING TO THE RISK OF FIRE OR ELECTRIC SHOCK

**ALWAYS ADHERE TO THE FOLLOWING INSTRUCTIONS WHEN HANDLING OR CHARGING THE BATTERY:**

- Only use Specialized chargers with specialized batteries that fit into Specialized Turbo bicycles. Do not use Specialized chargers with any other bicycle or any other charger with Specialized Turbo bicycles, even if it fits. Refer to the table in the BATTERY TECHNICAL DATA section to ensure compatibility of your charger and battery.
- Turn off the battery, unplug the charger from the battery and remove the battery from the bicycle before performing work of any kind on the bicycle (e.g. maintenance, repair, cleaning) or during transportation.
- Only use the Specialized charger supplied with the bicycle or other chargers approved by Specialized.
- Do not leave the charger connected to the battery overnight or after the battery has reached full charge.
- Make sure the charging socket and plug are clean and dry before connecting and charging the battery.
- Regularly inspect the charger before every use for possible damage to the charger itself, the cable, or the charging plug. Never use a charger which you suspect is damaged or know is broken.
- Only use the supplied charger cord. Ensure the cord plug is fully inserted in the charger before plugging the charger into a power outlet.
- Always turn the bicycle off before connecting or disconnecting the charger from the charge port.
- Refer to your bicycle's user manual for instructions and information regarding your battery.
- To reduce the risk of injury, close supervision is necessary when the product is used near children.
- Do not modify, open, or disassemble the charger. Modification or disassembly may result in a short circuit, fire, or malfunction.
- Do not allow the charger to overheat.
- Protect the battery from excessive sun exposure.
- Do not expose the charger to an open fire or radiator heat.
- Do not submerge the charger in water.
- Do not expose to rain or snow. This charger is designed for indoor use only.
- Do not use this charger on non-rechargeable batteries.
- Do not use this product if the flexible power cord or output cable is frayed, has broken insulation, or any other signs of damage.
- The hardwired charger cable cannot be replaced. If the cable is damaged, the charger must be replaced in its entirety.

**Non EU Countries:**

- This appliance is not intended for use by persons (including children) with reduced physical, sensory or mental capabilities, or lack of experience and knowledge, unless they have been given supervision or instruction concerning the use of the appliance by a person responsible for their safety. Children should be supervised to ensure that they do not play with the appliance.

**EU Countries:**

- This appliance can be used by children aged from 8 years and above and persons with reduced physical, sensory or mental capabilities or lack of experience and knowledge if they have been given supervision or instruction concerning the use of the appliance in a safe way and understand the hazards involved. Children shall not play with the appliance. Cleaning and user maintenance shall not be made by children without supervision.



**WARNING!** Failure to follow the instructions in this section may result in damage to electrical components on your bicycle and will void your warranty, but, most importantly, may result in serious personal injury or death. If your battery or charger exhibits any signs of damage, do not use it and immediately bring it to your Authorized Specialized Retailer for inspection.

## CLEANING AND MAINTENANCE

- Always remove the charger from the charge port and wall socket before cleaning the charger.
- Do not use alcohol, solvents, or abrasive cleaners to clean the charger. Instead, use a dry or slightly damp cloth.
- Make sure connectors are dry and clean before reconnecting and riding. Ask your Authorized Specialized Retailer for additional information about cleaning your bicycle.

## DISPOSAL



Batteries and chargers must not be disposed of in your household trash! All batteries and chargers must be disposed of in an environmentally friendly manner, in accordance with the battery disposal regulations in your country or state. Ask your Authorized Specialized Retailer for information about how to dispose of a battery or charger and any applicable take-back program.

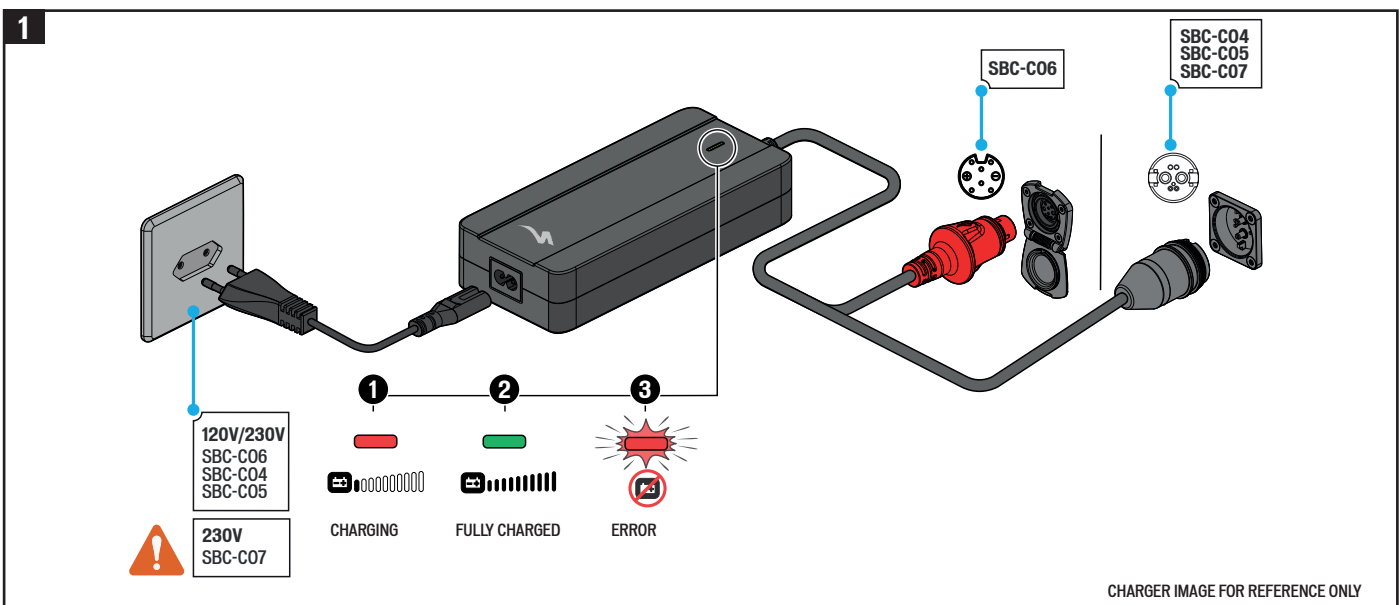
## BATTERY AND CHARGER LABEL

**WARNING!** Before using the charger, read the label / information on the charger itself, the battery, and the relevant sections in the manuals supplied with your bicycle.

## SAFETY SYMBOLS

Read instruction manual		Dispose the charger via the designated take-back system		Class II appliance, does not require a safety connection to ground	
Indoor use only		CE: checkmark, device is compliant to European standards		Device contains T 2.5A fuse for overcurrent protection	
For your own protection and for the protection of your charger pay attention to all parts of the text that are marked with this symbol!					

## INSTALLATION AND OPERATION OF THE CHARGER



- Plug the charger power cable into the socket on the charger, then plug the charger's plug into an outlet using the appropriate plug for the country's standards. Never use extension cords.
- Power off your Turbo bicycle then insert the charging plug into the charging socket on your Turbo bicycle.
- For more information specific to your Specialized Turbo bicycle, such as charging socket location, how to maintain, operate, and charge your Turbo bicycle, please refer to the bicycle user manual specific to your Specialized Turbo bicycle.
- During the charging process, the LED light on the charger will glow red. When the battery is fully charged, the LED light on the charger will turn green.
- When charging is complete, disconnect the charging plug from the charging socket and unplug the charger from the wall socket.



**INFO:** The battery can be charged whether installed in the bicycle or not. Refer to the appropriate instructions regarding removing and installing the battery. Only charge the battery at an ambient temperature as listed in the charger technical data table. If the battery is too hot, it will not charge.



**WARNING!** Place the charger (and battery if removed from the frame) on a stable, level surface unaffected by heat. You should charge the battery in a dry, well ventilated area and make sure the charger is uncovered during the charging process. Ensure that the battery and charger are not exposed to any flammable or dangerous substances. Plug the charger's plug into an outlet, using the appropriate plug for the country's standards, then connect the charging plug with the charging socket on the battery. Specialized recommends charging the battery in an area with a smoke detector.



**CAUTION:** If the red LED flashes during the charging process (fig.1), a charging error has occurred. In that case, immediately remove the charger from the socket, discontinue use of the motor support and contact your Authorized Specialized Retailer.

### CHARGER TECHNICAL DATA

DESCRIPTION	UNIT	SPECIFICATION			
		SBC-C04	SBC-C05	SBC-C06	SBC-C07
CHARGING VOLTAGE (DC)	VOLT	42	42	54	42
RATED VOLTAGE (AC)	VOLT	100 - 240	100 - 240	100 - 240	230 - 240
CHARGING CURRENT	AMP	4	2	3	4
FREQUENCY	Hz	50/60	50/60	50/60	50 / 60
WEIGHT	Kg	1	1	1	1
OPERATING TEMPERATURE	°C	0 - +40	0 - +40	0 - +40	-10 - +40
	°F	+32 - +104	+32 - +104	+32 - +104	14 - +104
STORAGE TEMPERATURE	°C	-20 - +65	-20 - +65	-20 - +65	-20 - +70
	°F	-4 - +149	-4 - +149	-4 - +149	-4 - +158
DIMENSIONS	MM	177 x 78 x 38.5	177 x 78 x 38.5	177 x 78 x 38.5	179 x 86 x 50.5



### BATTERY TECHNICAL DATA

DESCRIPTION	UNIT	BATTERY																			
		SBC-B01	SBC-B02	SBC-B03	SBC-B04	SBC-B05	SBC-B06	SBC-B07	SBC-B08	SBC-B09	SBC-B10	SBC-B11	SBC-B12	SBC-B13	SBC-B15	SBC-B16	SBC-B17	SBC-B19	SBC-B20	SBC-B21	SBC-B22
OPERATING VOLTAGE	VOLT	36	36	36	36	36	36	36	36	36	36	36	36	36	48	48	36	36	36	36	36
RATED CAPACITY	AH	11	14	13	15	19	11.5	12.5	14	16.8	14	12.5	14	19.5	7	3.5	11.5	14.7	19.6	13.4	19
ENERGY	WH	396	504	468	562	691	400	460	500	600	500	460	500	700	320	160	400	530	710	500	700
NUMBER OF CELLS		50	50	50	60	40	40	40	40	40	40	40	40	40	26	13	40	30	40	40	40
CHARGE TIME (SBC-C04)	HRS	3:00	3:50	3:35	4:20	5:20	3:15	3:30	3:50	4:35	3:50	3:30	3:50	5:15	X	X	3:15	4	5	3.5	5:15
CHARGE TIME (SBC-C05)	HRS	6:00	7:40	7:10	8:40	10:40	6:30	7:00	7:40	9:10	7:40	7:00	7:40	10:30	X	X	6:30	4	5	3.5	5:15
CHARGE TIME (SBC-C06)	HRS	X	X	X	X	X	X	X	X	X	X	X	X	X	2:35	3:20	X	X	X	X	X
CHARGE TIME (SBC-C07)	HRS	3:00	3:50	3:35	4:20	5:20	3:15	3:30	3:50	4:35	3:50	3:30	3:50	5:15			3:15	4	5	3.5	5:15

### WARRANTY

Please refer to the written warranty provisions provided with your bicycle, or visit [www.specialized.com](http://www.specialized.com). A copy is also available at your Authorized Specialized Retailer.

## EC - DECLARATION OF CONFORMITY

The manufacturer:	
Specialized Bicycle Components Inc. 15130 Concord Circle Morgan Hill, CA 95037, USA Tel: +1 408 779-6229	
<b>Hereby confirms for the following products:</b>	
<b>Product description:</b>	Li-ion Battery Charger
<b>Model designation:</b>	SBC-C04 / SBC-C05 / SBC-C06 / SBC-C07
<b>Comply with all of the relevant requirements of the directives:</b>	Electromagnetic Compatibility (2004/108/EC) Low Voltage (2014/35/EU)
<b>The following standards were applied to the product:</b>	EN 55014-1 Electromagnetic compatibility - Requirements for household appliances, electric tools and similar apparatus Part 1: Emission Part 2: Immunity EN 61000-3-2 Electromagnetic compatibility (EMC) Part 3-2: Limits - Limits for harmonic current emissions Part 3-3: Limits - Limitation of voltage changes, voltage fluctuations and flicker in public low-voltage supply systems EN 60335-1 Household and similar electrical appliances - safety EN 60335-2-29 Safety of household and similar appliances Part 1: General requirements Part 2: Particular requirements for battery chargers
<b>Serial number:</b>	Printed on the decal located on the charger body
<b>Technical documentation by:</b>	Specialized Europe GmbH Werkstattgasse 10 6330 Cham, Switzerland
Signature: 	Jan Talavasek (Sr. Director Turbo)
Specialized Europe GmbH, 6330 Cham, Switzerland, April 1st, 2021	

NOTE: THIS DECLARATION OF CONFORMITY APPLIES ONLY TO BICYCLES SOLD IN COUNTRIES FOLLOWING THE CE MARKING DIRECTIVES.