

1 **Symptomatic SARS-CoV-2 re-infection of a health care worker in a**
2 **Belgian nosocomial outbreak despite primary neutralizing antibody**
3 **response.**

4 Philippe SELHORST^{a,d,*}, Sabrina VAN IERSSEL^g, Jo MICHIELS^a, Joachim MARIËN^{b,d}, Koen
5 BARTHOLOMEEUSEN^a, Eveline DIRINCK^h, Sarah VANDAMME^f, Hilde JANSENS^{e,f}, Kevin
6 K. ARIËN^{a,c}

7
8 **Affiliations:**

9 *^a Department of Biomedical Sciences, Institute of Tropical Medicine, Antwerp, Belgium*

10 *^b Department of Clinical Sciences, Institute of Tropical Medicine, Antwerp, Belgium*

11 *^c University of Antwerp, Antwerp, Belgium*

12 *^d The Outbreak Research Team, Institute of Tropical Medicine, Antwerp, Belgium*

13 *^e Department of Infection Prevention, Antwerp University Hospital, Edegem, Belgium*

14 *^f Department of Microbiology, Antwerp University Hospital, Edegem, Belgium*

15 *^g Department of General Internal Medicine, Infectious diseases and Tropical Medicine, Antwerp
16 University Hospital, Edegem, Belgium*

17 *^h Department of Endocrinology, Diabetology and Metabolic Disease, Antwerp University
18 Hospital, Edegem, Belgium*

19
20 *corresponding author

21 pselhorst@itg.be +32(0)32476546 Nationalestraat 155 2000 Antwerpen BELGIUM

22

23 **Abstract**

24 **Background.** It is currently unclear whether SARS-CoV-2 re-infection will remain a rare event,
25 only occurring in individuals who fail to mount an effective immune response, or whether it will
26 occur more frequently when humoral immunity wanes following primary infection.

27 **Methods.** A case of re-infection was observed in a Belgian nosocomial outbreak involving 3
28 patients and 2 health care workers. To distinguish re-infection from persistent infection and
29 detect potential transmission clusters, whole genome sequencing was performed on
30 nasopharyngeal swabs of all individuals including the re-infection case's first episode. IgA, IgM,
31 and IgG and neutralizing antibody responses were quantified in serum of all individuals, and
32 viral infectiousness was measured in the swabs of the reinfection case.

33 **Results.** Re-infection was confirmed in a young, immunocompetent health care worker as viral
34 genomes derived from the first and second episode belonged to different SARS-CoV-2 clades.
35 The symptomatic re-infection occurred after an interval of 185 days, despite the development of
36 an effective humoral immune response following symptomatic primary infection. The second
37 episode, however, was milder and characterized by a fast rise in serum IgG and neutralizing
38 antibodies. Although contact tracing and virus culture remained inconclusive, the health care
39 worker formed a transmission cluster with 3 patients and showed evidence of virus replication
40 but not of neutralizing antibodies in her nasopharyngeal swabs.

41 **Conclusion** If this case is representative of most Covid-19 patients, long-lived protective
42 immunity against SARS-CoV-2 might not be likely.

43 **Keywords**

44 SARS-CoV-2, re-infection, humoral immunity, coronavirus, COVID-19, whole genome
45 sequencing

46 **Introduction**

47 The mechanism, extent, and duration by which primary SARS-CoV-2 infection provides
48 immunity against re-infection are currently unclear. For common cold coronaviruses, loss of
49 immunity and re-infection with the same virus have been reported to occur frequently 12 months
50 after primary infection [1]. For SARS-CoV-2, persistent viral shedding can occur over prolonged
51 periods of time following clinical recovery [2]. To confirm genuine re-infection, whole-genome
52 sequencing is required. Since the start of the SARS-CoV-2 pandemic 11 months ago, only 8
53 published and confirmed cases of re-infection were reported in Hong Kong [3], the USA [4,5],
54 Belgium [6], the Netherlands [7], Ecuador [8], and India [9]. These cases likely are an
55 underestimate due to the limited detection of asymptomatic cases. In fact many more cases were
56 reported in the media and on preprint servers [2,10–12]. Hence, it remains to be seen whether
57 these re-infection cases represent the tail end of the distribution with many more to come or
58 whether SARS-CoV-2 re-infection remains a rare event.

59 One hypothesis could be that re-infections occurs as a result of immune evasion by another
60 variant of SARS-CoV-2. However, the genomic variations seen across SARS-CoV-2 sequences
61 are limited and likely the result of neutral evolution, rather than adaptive selection, and although
62 the D614G mutation in Spike has become consensus, there is no evidence that this mutation is
63 linked to host immune pressure [13,14].

64 Another hypothesis could be that these re-infections only occur in individuals that do not develop
65 an effective immune response during primary infection. Indeed, not all Covid-19 patients
66 seroconvert [15,16] and not all who seroconvert develop neutralizing antibodies [17].
67 Furthermore, disease severity seems to correlate with higher IgG [18–20] and neutralizing
68 antibody titers [19,20]. Unfortunately, in only two of all reported re-infection cases antibody

69 testing was reported after the first episode. In the Hong Kong case, IgGs but no neutralizing
70 antibodies were detected 10 and 43 days pso [3,21] whereas in the Ecuador case, IgMs but no
71 IgGs were detected by rapid test 4 days pso [8]. Neutralizing antibodies were not measured.
72 Hence, it is currently unclear whether these re-infection cases were able to mount an effective
73 immune response after primary infection.

74 Finally, it is not known whether immunity prevents onward transmission from those who are re-
75 infected. Most reported re-infection cases [3,4,6-8,11] showed nasopharyngeal samples with
76 high RT-qPCR Ct values, from which virus is usually unculturable. Five Indian health care
77 workers however, displayed high viral loads during their secondary infection but no viral culture
78 was performed to determine the infectiousness of their virus [9,12].

79 Here we describe a case of symptomatic re-infection in a health care worker despite having
80 developed a neutralizing antibody response following symptomatic primary infection. The re-
81 infection occurred with an interval of 185 days during a nosocomial outbreak involving 5
82 individuals. Whole genome sequencing was performed, and humoral immune responses and viral
83 infectiousness were quantified.

84

85

86

87

88 **Materials & Methods**

89 *Sample collection and diagnosis*

90 Sample collection and clinical evaluation were performed in view of diagnosis and standard of
91 care and approved by the hospital's ethical committee (EC/PM/nvb/2020.084). Oral consent was
92 obtained from all patients before sampling followed by written consent prior to publication.
93 Initial SARS-CoV-2 diagnosis was performed at the hospital on nasopharyngeal swabs using the
94 Xpert Xpress SARS-CoV-2 test on the GeneXpert® Platform (Cepheid, USA) as per
95 manufacturer's instructions or by in-house PCR [22] with extraction on NucliSens EasyMag®
96 (Biomérieux, France) and amplification on Cobas LightCycler® (Roche, Switzerland). Complete
97 blood counts were performed on XN-9100® (Sysmex) and biochemistry parameters on
98 Atellica® (Siemens, Germany).

99

100 *RNA extraction and RT-qPCR on nasopharyngeal samples*

101 At the Institute of Tropical Medicine Antwerp, RNA was extracted from UTM or eSwab
102 medium after inactivation at 56°C with proteinase K using a Maxwell RSC Instrument. RNA
103 from phocine distemper virus was added to all samples as an internal extraction and PCR
104 inhibition control [23]. A SARS-CoV-2-specific RT-qPCR was then performed to amplify a 112
105 bp fragment of the E gene as previously described [22] with 5 µL RNA in a 25 µL reaction using
106 the Bioline SensiFAST mix, Reverse Transcriptase and RiboSafe RNase inhibitor. To determine
107 the presence of SARS-CoV-2 replicase activity, a negative strand RT-qPCR was performed as
108 previously described [24] with FWD-Tag-primer-1 (catacgcacggataaa-
109 GCAAGAGATGGTTGTGTTC), Tag-primer-1 (catacgcacggataaa), REV-primer-1

110 (GTAAATGTTGTACCATCACACG) and FAM-labeled negative-strand-probe-1
111 (CAGCAGCCAAACTAATGGTTGTCATA).

112 *Whole genome sequencing using MinION*

113 Whole genome sequencing was performed on an Oxford Nanopore MinION device using R9.4
114 flow cells (Oxford Nanopore Technologies, UK) after a multiplex PCR with an 800bp SARS-
115 CoV-2 primer scheme as previously described [25]. Sequence reads were basecalled in high
116 accuracy mode and demultiplexed using the Guppy algorithm v3.6. Reads were aligned to the
117 reference genome Wuhan-Hu-1 (MN908947.3) with Burrows-Wheeler Aligner (BWA-MEM)
118 and a majority rule consensus was produced for positions with $\geq 100x$ genome coverage, while
119 regions with lower coverage, were masked with N characters.

120

121 *Phylogenomic analysis*

122 All SARS-CoV-2 genomes were compared at the nucleotide and amino acid level to the
123 reference genome Wuhan-Hu-1. Clade assignment was performed using NextClade v0.7.2 [26].
124 BLAST+ was used to extract the top 15 matches for each of our sequences from the
125 msa_0929.fasta file downloaded from GISAID (Global Initiative on Sharing All Influenza Data).
126 In addition, we included the most recent (Aug 16-31, 2020) Belgian sequences and all Belgian L,
127 O, V clade sequences collected between March 1-16, 2020. Sequence alignment was performed
128 using MAFFT v7 and a maximum likelihood phylogenetic tree was inferred with IQ-TREE
129 v1.6.12., using the TIM2+F+I model and 500 nonparametric bootstraps, and visualized in
130 FigTree v1.4.4.

131

132 *SARS-CoV-2 specific antibody detection tests*

133 The Elecsys electrochemiluminescence immunoassay on the Cobas 8000® analyzer (Roche
134 Diagnostics, Belgium) was used for the qualitative detection of total antibodies against the
135 Nucleocapsid (N) antigen of SARS-CoV-2. A signal threshold ≥ 1 was defined as positive. For
136 the separate quantification of IgM, IgG, and IgA antibodies, we used a Luminex bead-based
137 assay [27]. In short, recombinant receptor binding domain (RBD) and N protein
138 (BIOCONNECT, The Netherlands) were coupled to 1.25×10^6 paramagnetic MAGPLEX COOH-
139 microspheres from Luminex Corporation (Texas, USA). After incubation of beads and diluted
140 sera (1/300 for IgG and IgM, 1/100 for IgA), a biotin-labeled anti-human IgG, IgA, and IgM
141 (1:125) and streptavidin-R-phycoerythrin (1:1000) conjugate was added. Beads were read using
142 a Luminex® 100/200 analyzer with 50 μ L acquisition, DD gat 5000 - 25000 settings, and high
143 PMT option. Results were expressed as crude median fluorescent intensities (MFI). Samples
144 were considered positive if $MFI > 3 \times SD + \text{mean of negative controls}$ (n=16).

145

146 ***SARS-CoV-2 viral neutralization test and virus isolation***

147 Serial dilutions (1/50 - 1/1600) of heat-inactivated (30 min at 56°C) serum or nasopharyngeal
148 samples were incubated with 3x TCID₅₀ of a SARS-CoV-2 primary isolate (2019-nCoV-Italy-
149 INMI1) for 1h at 37°C / 7% CO₂ and subsequently added to 18.000 Vero cells per well for a
150 further 5 days incubation. Assay medium consisted of EMEM (Lonza, Belgium) supplemented
151 with 2 mM L-glutamine, 2% fetal bovine serum, and penicillin - streptomycin (Lonza). After
152 incubation, cytopathic effect caused by viral growth was scored microscopically. 50% (NT50) or
153 90% (NT90) neutralization titers were calculated using the Reed-Muench method. Similarly,
154 virus isolation was attempted by incubating a serial dilution of nasopharyngeal samples on

155 VeroE6-TMPRSS2 cells after 2 hours of spinoculation at 2500g and 25°C and following up
156 cytopathic effect.

157

158 **Results**

159 **Clinical evolution of the outbreak**

160 In September 2020, a nosocomial outbreak occurred at an internal medicine ward in a Belgian
161 hospital. A man in his seventies (PAT1) developed influenza-like symptoms of cough, low grade
162 fever and general malaise and tested positive for SARS-CoV-2. Three days later a woman, also
163 in her seventies, (PAT2) tested positive after developing gastro-intestinal symptoms and general
164 malaise (Table 1). In response to this outbreak all patients and health care workers on the ward
165 were tested revealing 1 additional asymptomatic man in his eighties (PAT3) and 2 infected
166 health care workers (HCW1 & HCW2) showing mild symptoms. All individuals recovered
167 completely. HCW1, a woman in her thirties, had already been infected with SARS-CoV-2 in
168 March 2020. During this first episode she had a protracted mild illness with cough, dyspnea,
169 headache, fever and general malaise. Her hematological and biochemical parameters were
170 consistent with viral infection showing decreased white blood cell counts and mildly elevated
171 CRP (Supplementary table 1). She was managed as an outpatient and slowly resumed work after
172 1 month. During the second episode her clinical presentation was milder, and she resumed work
173 10 days after diagnosis although she experienced dyspneic spells for up to 3 weeks. A blood
174 sample and a second swab were taken 7 days after symptom onset. This time no laboratory
175 abnormalities were found (Supplementary table 1).

176

177 **Whole genome sequencing revealing transmission cluster**

178 To distinguish re-infection from persistent infection and detect potential transmission clusters,
179 whole genome sequencing was performed on all nasopharyngeal swabs taken from the 3 patients
180 and 2 health care workers, including the swab taken from HCW1 during her first episode. 99.6%

181 of the SARS-CoV-2 genome (nucleotide 55–29823) was recovered at an average mean depth of
182 771-fold (Supplementary table 2). Analysis of these sequences (EPI_ISL_582127–32) revealed
183 that the virus which infected HCW1 in September belonged to a different SARS-CoV-2 clade (G
184 clade) than the virus causing her first COVID-19 episode in March (V clade) (Figure 1). A total
185 of 18 nucleotide differences, of which only one shared (i.e. G11083T defining the V clade from
186 which clade G emerged), could be observed between the 2 strains (Figure 2). This confirms their
187 distinct nature and is within the range of 9-24 nucleotide differences reported for other re-
188 infections. Interestingly, the 3 infected patients shared the same virus and hence constitute a
189 recent transmission cluster with HCW1. None of the amino acid mutations in the S gene of the
190 reinfecting virus were previously reported to confer resistance to convalescent plasma or RBD-
191 specific monoclonal antibodies [28]. Finally, the viral sequence derived from HCW2 differed by
192 27 nucleotides from HCW1’s virus and belonged to GISAID’s GH clade (Figure 1 and 2). This
193 suggests that HCW2 was infected by an external transmission source which corresponds with the
194 fact that one of her relatives also tested positive for SARS-CoV-2. As the phylogenetic analysis
195 and visualization provided by Nextstrain [29] only uses a subsample of publicly available SARS-
196 CoV-2 genomes, we performed a blast search to include the most closely related known
197 sequences in our analysis. As expected, the genomes from HCW1, PAT13, and HCW2 in
198 September were closely related to Belgian sequences obtained in July-September whereas the
199 virus from HCW1’s March episode was identical to Belgian sequences collected in that same
200 month (Supplementary figure 1).

201

202

203

204 **Assessment of SARS-CoV-2 specific humoral response and neutralizing antibodies**

205 We then measured the presence of total SARS-CoV-2 specific antibodies as well as individual
206 IgA, IgM, and IgG titers in the serum of the 4 individuals in the transmission cluster using all
207 available samples. As antibody kinetics can depend on the antigen [20], we measured responses
208 against the N protein and the RBD of the Spike protein. In addition, we performed *in vitro* viral
209 neutralization tests on serum and swab samples to determine whether these antibodies have
210 neutralizing capacity. HCW1 clearly seroconverted because 3 months after primary infection,
211 she still displayed high serum IgG titers as well as neutralizing antibodies (200 NT50) at levels
212 higher than those of the 3 patients 2 weeks post diagnosis (Table 1). As expected, serum IgM and
213 IgA could not be detected at this timepoint. Since antibody testing was not available during the
214 first wave of the pandemic in Belgium, and no baseline sample was taken upon re-infection, we
215 could not evaluate whether her neutralization titers had been higher closer to primary infection or
216 disappeared closer to re-infection. However, during re-infection, a rapid rise in neutralizing
217 antibodies could be observed within 7 days pso (1309 NT50) which further increased 14 days
218 later (>1600 NT50) in line with the high IgG titers and somewhat lower IgA and IgM titers at
219 these timepoints (Table 1). PAT2 showed full seroconversion 13 days post symptom onset (pso)
220 and displayed high IgA, IgM and IgG titers as well as a low neutralizing antibody response (75
221 NT50). For PAT1 however, who was first to develop symptoms, IgM levels were below the cut-
222 off 17 days pso although IgA and IgG were clearly present as well as neutralizing antibodies
223 (100 NT50). Finally, for PAT3 only low IgA titers and very low levels of neutralizing antibodies
224 (<50 NT50) were detected 12 days post diagnosis which corresponds with his asymptomatic
225 disease and high Ct values upon diagnosis (Table 1). No neutralizing antibodies were detected in
226 any of the nasopharyngeal swabs including those of HCW1 taken at day 0 and day 7 pso.

227 **Potential onward transmission from the re-infection case**

228 How transmission exactly occurred within this cluster of 4 individuals as well as its origin
229 remain unclear. The identical genomes and timelines would suggest one index patient who
230 infected the others. All 3 patients tested negative for SARS-CoV-2 upon admission to the
231 hospital with a diabetic foot problem 4 to 6 weeks prior to this outbreak (Table 1). They were put
232 on compulsory bed rest, stayed in private rooms, and only received a maximum of 1 visitor a day
233 as per hospital rules. It is unlikely that HCW1 contracted the virus and transmitted it to the 3
234 patients as HCW1 developed symptoms 4 days after PAT1 and did not nurse PAT1. One
235 explanation could be that an asymptomatic visitor of PAT1 infected both PAT1 and HCW1 who
236 then transmitted the virus while nursing PAT2 and PAT3. However, none of the close contacts of
237 HCW1, PAT1, and PAT3 tested positive for SARS-CoV-2, although cases could have been
238 missed. PAT2 reported symptomatic SARS-CoV-2 infection in one of her relatives 2 days after
239 her diagnosis, but is unlikely to be the index patient (and rather infected the visitor) as PAT2
240 developed symptoms 3 days after PAT1 who she did not have contact with. Finally,
241 nasopharyngeal swabs taken from HCW1 at diagnosis and 6 days later showed high viral loads
242 (Avg Ct 19 and 25 respectively), but lower than at diagnosis of primary infection (Avg Ct 13),
243 and contained replicating virus as indicated by RT-qPCR for negative strand RNA (Avg Ct 25.5
244 and 28.5 respectively). Yet, we were unable to culture virus from these swabs, but this might be
245 because we had to dilute the otherwise cytotoxic swab medium to a level where virus isolation
246 can fail.

247

248 **Discussion**

249 One of the key questions in understanding SARS-CoV-2 immunity and predicting the course of
250 the pandemic is for how long and how frequently primary infection protects against re-infection.
251 Eight cases of re-infection have now been described showing intervals between episodes from 48
252 to 142 days. In this study, we describe another genuine case of SARS-CoV-2 re-infection with an
253 interval of 185 days. The viral genomes from the first and second episode belonged to different
254 SARS-CoV-2 clades and phylogenomic analysis showed that the closest relatives to these 2
255 genomes were strains collected mostly from Belgium around the same period.

256 We then quantified the humoral immune response in HCW1 after her first and second SARS-
257 CoV-2 episode as it was suggested that asymptomatic and mild primary infections might not
258 protect against re-infection. The fact that HCW1 fully seroconverted and even had significant
259 levels of serum neutralizing antibodies 3 months after primary infection, suggests that she wasn't
260 an exceptional patient unable to mount a humoral immune response. The re-infecting virus also
261 didn't harbor any known Spike mutations that could have enabled escape from neutralizing
262 antibodies induced during primary infection. The durability of the humoral immune response on
263 the other hand, remains a debated issue. Although some early studies reported a rapid loss of
264 humoral immunity [14,30] within 2-3 months in up to 40% of patients with mild disease [18],
265 more recent evidence shows that neutralizing antibodies and IgGs actually reach a stable nadir
266 after an initial decline [20,31], which persists for at least 5 to 7 months, presumably as short-
267 lived plasma cells are replaced with long-lived antibody secreting cells [20]. However, as no
268 blood sample was taken from HCW1 right before or at day 0 of the second episode, we could not
269 reliably determine whether neutralizing antibodies persisted or whether a further loss allowed for

270 the re-infection. Of note, neutralizing antibodies are only a marker of immunity and the antibody
271 level needed to confer protection to SARS-CoV-2 is currently unknown.

272 The slightly milder clinical disease course of HCW1's secondary infection with normal
273 physiological parameters, is likely the result of the patient's adaptive immunity being primed by
274 the first infection. This corresponds with the lower viral loads and the strong and fast rise in
275 serum IgG, and neutralizing antibody responses observed after re-infection while IgA and IgM
276 levels remained rather low. Unfortunately, we were unable to compare these antibody levels to
277 similar time points after the first episode.

278 It seems likely that HCW1 played a role in the spread of this outbreak as she provides the only
279 link between some of the patients. Furthermore, although virus culture remained inconclusive,
280 HCW1's nasopharyngeal swabs contained replicating virus but no neutralizing antibodies which
281 suggests the re-infecting virus was fully capable of onward transmission. However, none of her
282 contacts tested positive, which might be reassuring.

283 In conclusion, we describe a case of SARS-CoV-2 re-infection in a young, immunocompetent
284 patient who, in contrast to the Hong Kong case, developed an effective humoral response after
285 primary infection. If cases like this substantially increase over the next few months, long-lived
286 protective immunity against SARS-CoV-2 will not be likely, which would be in line with other
287 human coronaviruses, and might impact current vaccine development strategies which are based
288 on eliciting neutralizing antibody responses.

289

290

291 **Acknowledgements**

292 PS and JM are members of the Institute of Tropical Medicine's Outbreak Research Team which
293 is financially supported by the Department of Economy, Science and Innovation (EWI) of the
294 Flemish government. Part of the research was covered by the Flemish Research Foundation
295 [grant number FWO-G0G4220N to KA]. We thank Odin Goovaerts and Wim Adriaensen for
296 carefully reading the manuscript as well as all sequence contributors to the GISAID database.

297

298 **References**

- 299 1. Edridge AWD, Kaczorowska J, Hoste ACR, et al. Seasonal coronavirus protective
300 immunity is short-lasting. *Nat Med* **2020**;
- 301 2. Raddad LJA, Chemaitelly H, Malek JA, et al. Assessment of the risk of SARS-CoV-2
302 reinfection in an intense re-exposure setting. *medRxiv* **2020**;
- 303 3. To KK-W, Hung IF-N, Ip JD, et al. COVID-19 re-infection by a phylogenetically distinct
304 SARS-coronavirus-2 strain confirmed by whole genome sequencing. *Clin Infect Dis* **2020**;
- 305 4. Tillett RL, Sevinsky JR, Hartley PD, et al. Genomic evidence for reinfection with SARS-
306 CoV-2: a case study. *Lancet Infect Dis* **2020**;
- 307 5. Larson D, Brodniak SL, Voegtly LJ, et al. A case of early re-infection with SARS-CoV-2.
308 *Clin Infect Dis* **2020**; ciaa1436.
- 309 6. Van Elslande J, Vermeersch P, Vandervoort K, et al. Symptomatic SARS-CoV-2
310 reinfection by a phylogenetically distinct strain. *Clin Infect Dis* **2020**; ciaa1330.
- 311 7. Mulder M, van der Vegt DSJM, Oude Munnink BB, et al. Reinfection of SARS-CoV-2 in
312 an immunocompromised patient: a case report. *Clin Infect Dis* **2020**; ciaa1538.
- 313 8. Prado-Vivar B, Becerra-Wong M, Guadalupe JJ, et al. COVID-19 Re-infection by a
314 phylogenetically distinct SARS-CoV-2 variant, first confirmed event in South America.
315 *SSRN Electron J* **2020**;
- 316 9. Gupta V, Bhojar RC, Jain A, et al. Asymptomatic reinfection in two healthcare workers
317 from India with genetically distinct SARS-CoV-2. *Clin Infect Dis* **2020**; ciaa1451.
- 318 10. BNO. Covid-19 reinfection tracker. 2020. Available at:
319 <https://bnonews.com/index.php/2020/08/covid-19-reinfection-tracker/>. Accessed 27
320 October 2020.

- 321 11. Goldman JD, Wang K, Roltgen K, et al. Reinfection with SARS-CoV-2 and failure of
322 humoral immunity: a case report. *medRxiv* **2020**;
- 323 12. Shastri J, Parikh S, Agarwal S, et al. Whole genome sequencing confirmed SARS-CoV-2
324 reinfections among healthcare workers in India with increased severity in the second
325 episode. *SSRN Electron J* **2020**;
- 326 13. Dearlove B, Lewitus E, Bai H, et al. A SARS-CoV-2 vaccine candidate would likely
327 match all currently circulating variants. *Proc Natl Acad Sci U S A* **2020**; 117:23652–
328 23662.
- 329 14. Beaudoin-Bussièrès G, Laumaea A, Anand SP, et al. Decline of humoral responses against
330 SARS-CoV-2 spike in convalescent individuals. *MBio* **2020**; 11.
- 331 15. Fill Malfertheiner S, Brandstetter S, Roth S, et al. Immune response to SARS-CoV-2 in
332 health care workers following a COVID-19 outbreak: a prospective longitudinal study. *J*
333 *Clin Virol* **2020**; 130:104575.
- 334 16. Pollán M, Pérez-Gómez B, Pastor-Barriuso R, et al. Prevalence of SARS-CoV-2 in Spain
335 (ENE-COVID): a nationwide, population-based seroepidemiological study. *Lancet* **2020**;
336 396:535–544.
- 337 17. Robbiani DF, Gaebler C, Muecksch F, et al. Convergent antibody responses to SARS-
338 CoV-2 in convalescent individuals. *Nature* **2020**; 584:437–442.
- 339 18. Long QX, Tang XJ, Shi QL, et al. Clinical and immunological assessment of
340 asymptomatic SARS-CoV-2 infections. *Nat Med* **2020**; 26:1200–1204.
- 341 19. Ko J-H, Joo E-J, Park S-J, et al. Neutralizing antibody production in asymptomatic and
342 mild COVID-19 patients, in comparison with pneumonic COVID-19 patients. *J Clin Med*
343 **2020**; 9:2268.

- 344 20. Ripperger TJ, Uhrlaub JL, Watanabe M, et al. Orthogonal SARS-CoV-2 serological
345 assays enable surveillance of low prevalence communities and reveal durable humoral
346 immunity. *Immunity* **2020**;
- 347 21. Chan PKS, Lui G, Hachim A, et al. Serologic responses in healthy adult with SARS-CoV-
348 2 reinfection, Hong Kong, August 2020. *Emerg Infect Dis* **2020**; 26.
- 349 22. Corman VM, Landt O, Kaiser M, et al. Detection of 2019 novel coronavirus (2019-nCoV)
350 by real-time RT-PCR. *Eurosurveillance* **2020**; 25:2000045.
- 351 23. Clancy A, Crowley B, Niesters H, Herra C. The development of a qualitative real-time
352 RT-PCR assay for the detection of hepatitis C virus. *Eur J Clin Microbiol Infect Dis* **2008**;
353 27:1177.
- 354 24. Huits R, De Smet B, Grard G, et al. Detection of Zika virus replication in human semen
355 by reverse-transcription polymerase chain reaction targeting of antisense ribonucleic acid.
356 *J Infect Dis* **2020**; 222:319–323.
- 357 25. Pirnay JP, Selhorst P, Cochez C, et al. Study of a SARS-CoV-2 outbreak in a Belgian
358 military education and training center in Maradi, Niger. *Viruses* **2020**; 12:949.
- 359 26. NextClade v0.7.2. Available at: <https://clades.nextstrain.org/>.
- 360 27. Ayouba A, Thaurignac G, Morquin D, et al. Multiplex detection and dynamics of IgG
361 antibodies to SARS-CoV2 and the highly pathogenic human coronaviruses SARS-CoV
362 and MERS-CoV. *J Clin Virol* **2020**; 129:104521.
- 363 28. Weisblum Y, Schmidt F, Zhang F, et al. Escape from neutralizing antibodies by SARS-
364 CoV-2 spike protein variants. *bioRxiv* **2020**;
- 365 29. Hadfield J, Megill C, Bell SM, et al. Nextstrain: real-time tracking of pathogen evolution.
366 *Bioinformatics* **2018**; 34:4121–4123.

- 367 30. Ibarondo FJ, Fulcher JA, Goodman-Meza D, et al. Rapid decay of anti-SARS-CoV-2
368 antibodies in persons with mild Covid-19. *N. Engl. J. Med.* 2020; 383:1085–1087.
- 369 31. Isho B, Abe KT, Zuo M, et al. Persistence of serum and saliva antibody responses to
370 SARS-CoV-2 spike antigens in COVID-19 patients. *Sci Immunol* **2020**; 5:eabe5511.
- 371

372 **Figure Captions**

373 **Figure 1. SARS-CoV-2 clade assignment of 6 genomes recovered from 3 patients (PAT) and**
374 **2 health care workers (HCW).** Sequences were aligned to a representation of the global SARS-
375 CoV-2 genetic diversity using a banded Smith-Waterman algorithm with an affine 160 gap-
376 penalty and subsequently visualized using NextClade v0.7.2. Colors represent the different
377 GISAID clades. The 6 genomes and their clades are marked by respectively arrows and grey
378 text. D = days post symptom onset / diagnosis; Mar = March; Sep = September

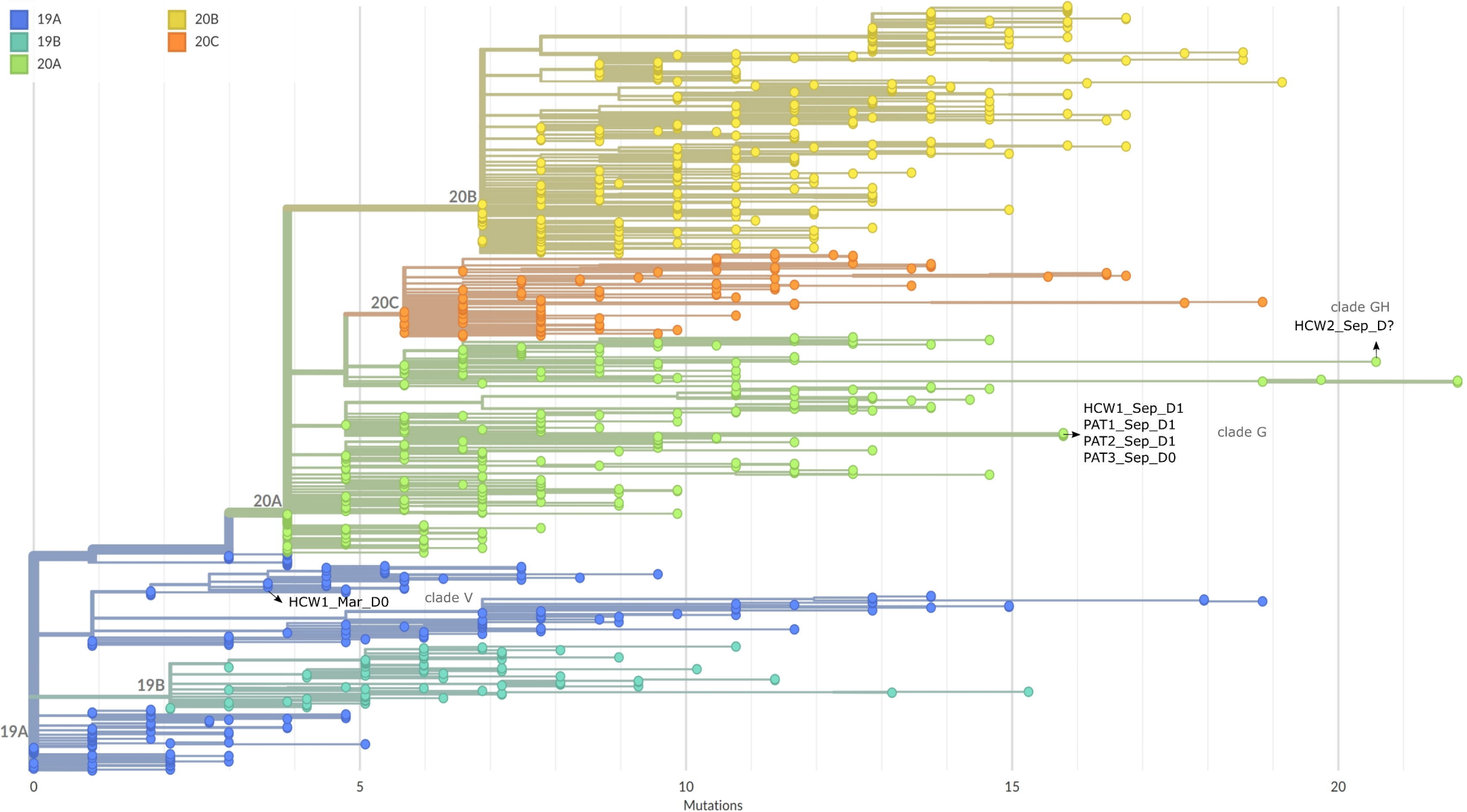
379
380 **Figure 2. Nucleotide and amino acid comparison of the nosocomial SARS-CoV-2 genomes**
381 **to the reference genome Wuhan-Hu-1.** * Mutations defining GISAID's G clade; + Mutations
382 defining GISAID's V clade; □ Mutation defining GISAID's GH clade, # Nt = number of
383 nucleotide changes compared to Wuhan-Hu-1; # AA = number of amino acid changes compared
384 to Wuhan-Hu-1; Clade = respectively Nextstrain (19A; 20A); GISAID (V; G; GH); and Pangolin
385 (B.1; B.2) nomenclature; PAT = patient; HCW = health care worker; ORF = open reading frame;
386 M = membrane; S = Spike; N = Nucleocapsid; D = days post symptom onset / diagnosis; Mar =
387 March; Sep = September

388
389 **Supplementary figure 1. Phylogenomic analysis of 6 genomes recovered from 3 patients**
390 **(PAT) and 2 health care workers (HCW) within a panel of most closely related SARS-CoV-**
391 **2 sequences.** A maximum likelihood phylogenetic tree (TIM2+F+I model) was inferred with IQ-
392 TREE v1.6.12 using 500 nonparametric bootstraps and the -czb option to collapse near zero
393 branch length and rooted using Wuhan-Hu-1 (MN908947.3) as outgroup. Leaf labels contain the
394 country of origin, sequence name, GISAID accession ID, date, and region. The genomes of the

395 first and second infection of HCW1, patients, and HCW2 are depicted in respectively red, blue
396 and green text. The scale bar represents the average number of nucleotide substitutions per site.

Phylogeny

Clade ^



| | | | ORF1a | | | | | | | | | ORF1b | | | | | | | S | | | ORF3a | | | | | M | | N | | | | ORF10 | | | | | |
|-------------------|------------------|-----|--------|-------|------|--------|------|------|---------------------|------|--------------------|-------|-------|-------|-------|--------|--------|-------|-------|-------|--------|-------|-------------------|--------|-------|--------------------|-------|--------------------|-------|--------------------|-------|-------|-------|-------|-------|-------|-------|--|
| Sequence name | Clade | #Nt | 241* | 3037* | 3602 | 4543 | 5629 | 6941 | 6968 | 9526 | 11083 ⁺ | 11497 | 13993 | 14408 | 14805 | 15324 | 15766 | 16889 | 17019 | 17247 | 18877 | 21855 | 22992 | 23403* | 25505 | 25563 [†] | 25710 | 25906 | 25996 | 26144 ⁺ | 26735 | 26876 | 28651 | 28869 | 28975 | 29399 | 29625 | |
| | | #AA | | | | | | | | | | | | | | | | | | | | | | | | | | | | | | | | | | | | |
| HCW1 Mar D0 C5182 | 19A V B.2 | 4 | | | | | | | | | | | | | | | | | | | | | | | | | | | | | | | | | | | | |
| | | 2 | C | C | C | C | G | C | C | G | T | C | G | C | T | C | G | A | G | C | C | C | G | A | A | G | C | G | G | T | C | T | C | C | G | G | C | |
| HCW1 Sep D1 C5183 | 20A G B.1 | 16 | T | T | T | C | G | T | T | G | T | C | G | T | C | T | G | A | G | T | C | T | G | G | G | C | C | T | G | C | T | T | T | G | G | T | | |
| PAT1 Sep D1 C5184 | | | T | T | T | C | G | T | T | G | T | C | G | T | C | T | G | A | G | T | C | T | G | G | G | C | C | T | G | C | T | T | T | G | G | T | | |
| PAT2 Sep D1 C5185 | | 10 | T | T | T | C | G | T | T | G | T | C | G | T | C | T | G | A | G | T | C | T | G | G | G | C | C | T | G | C | T | T | T | G | G | T | | |
| PAT3 Sep D0 C5186 | | | T | T | T | C | G | T | T | G | T | C | G | T | C | T | G | A | G | T | C | T | G | G | G | G | C | C | T | G | C | T | T | T | G | G | T | |
| HCW2 Sep D? C5188 | 20A GH B.1 | 21 | T | T | C | T | T | C | C | T | G | T | T | T | C | C | T | G | T | T | T | C | A | G | A | T | T | G | G | G | T | C | C | C | C | A | T | |
| | | 12 | T | T | C | T | T | C | C | T | G | T | T | T | C | C | T | G | T | T | T | C | A | G | A | T | T | G | G | G | T | C | C | C | C | A | T | |
| Amino acid change | | | H1113Y | | | M3087I | | | L3606F ⁺ | | | A176S | P314L | | V767L | K1141R | E1184D | | S98F | S477N | D614G* | Q38R | Q57H [†] | | G172R | V202L | | G251V ⁺ | | | P199L | M234I | A376T | S23F | | | | |

Table 1. Epidemiological and serological data on the 3 patients and 2 health care workers involved in the nosocomial outbreak

| Patient | Sex | Age | Condition | COVID-19 contacts | Symptoms | Swab collection | Avg Ct | Swab NT50 | Serum collection | Serum total Ig (COI) | Serum IgA (MFI) | | Serum IgM (MFI) | | Serum IgG (MFI) | | Serum NT50 |
|---------|-----|-------|-----------|-------------------|-----------------------------------|-----------------|--------|-----------|---------------------|----------------------|-----------------|--------------|-----------------|------------|-----------------|-------------|------------|
| | | | | | | | | | | | RBD | N | RBD | N | RBD | N | |
| HCW1 | F | 35-40 | Healthy | None | Cough; rhinitis; sore throat | Mar D0 | 13 | Neg | Jun D94 | 90.5 | Neg | Neg | Neg | Neg | 12774 | 23259 | 200 |
| | | | | | | Sep D1 | 19 | Neg | Jun D105 | 102.0 | - | - | - | - | - | - | - |
| | | | | | | Sep D7 | 25 | Neg | Sep D7 | 47.4 | 2578 | 349 | 811 | 799 | 24170 | 26301 | 1309 |
| | | | | | | | | | Sep D21 | 51.6 | 2312 | Neg | 952 | 714 | 24532 | 25862 | >1600 |
| PAT1 | M | 75-80 | Diabetic | None | Cough; low fever; malaise | Sep D1 | 14 | Neg | Sep D17 | Neg | 2774 | 20522 | Neg | Neg | 2783 | 1882 | 100 |
| PAT2 | F | 75-80 | Diabetic | Relative | Gastro-intestinal issues; malaise | Sep D1 | 21 | Neg | Sep D-13 Sep D13 | Neg Neg | Neg 986 | Neg 18216 | Neg 4043 | Neg 535 | Neg 21274 | Neg 1016 | Neg 75 |
| PAT3 | M | 85-90 | Diabetic | None | None | Sep D0 | 29 | Neg | Sep D12 | Neg | 768 | 292 | Neg | Neg | Neg | Neg | <50 |
| HCW2 | F | 25-30 | Healthy | Relative | ? | Sep D? | 30 | Neg | n/d | n/d | n/d | n/d | n/d | n/d | n/d | n/d | n/d |

HCW = health care worker; PAT = patient; F = female; M = male; n/a = not applicable; Avg Ct = average cycle threshold; NT50 = 50% neutralization antibody titer; Ig= immunoglobuline; RBD = receptor binding domain; MFI = median fluorescent intensity; COI = cutoff index, >1 = reactive; n/d = not done; Neg = negative; N = nucleoprotein; D = days post symptom onset / diagnosis; Mar = March; Sep = September; Jun = June