

Sudoku Mild No 14,874

								1
		9	2	6				
7						5	2	3
	1	3		5		7		4
					9			
	7	8		4		6		5
8						1	3	7
		5	1	7				
								9

Difficult No 14,875 **Super fiendish No 14,876**

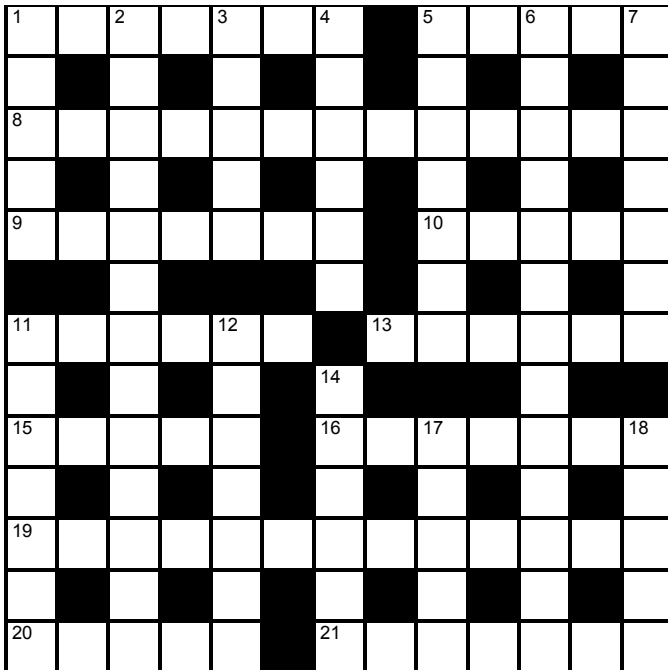
6					4			3
		4					7	
	1			2				
			3			2		9
		7			9	1		6
3				5			4	8
			7	1			8	
	7				5	9		
5			9	3	8			

					9	3		
			4	8	7			
								8
							7	2
1	8			9			4	
2		9					1	
7	6		8					
3	4	2		5				
	9	8	7	3				

© PUZZLER MEDIA

Cluelines Stuck on Sudoku, Killer or KenKen? Call 0901 293 6263 before midnight to receive four clues for any of today's puzzles. Calls cost £1 plus your telephone company's network access charge. SP: Spoke, 0333 202 3390 (Mon-Fri 9am-5.30pm).

The Times Quick Cryptic No 2663 by Joker



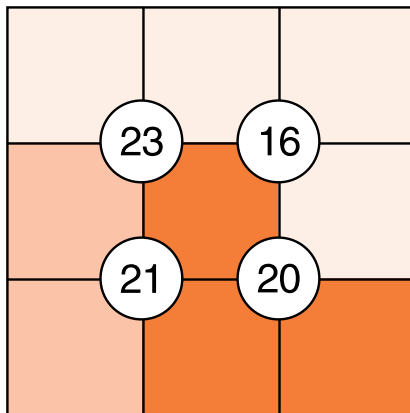
Across

- 1 He-cat, eh? Possibly (7)
- 5 Type of book work embraced by young boxer? (3-2)
- 8 Home game in Congo university takes cunning so as to stand out? (13)
- 9 Type of sugar in cola set to change (7)
- 10 Brick for building half done in Lincoln? (5)
- 11 Red-faced state is never-ending (6)
- 13 Hate side losing openers before cricket match (6)
- 15 What's initially curtailing run after muscle pain? (5)
- 16 Praise article by Conservative right (7)
- 19 Team spilling the beans is hilarious (4-9)
- 20 Area yielded a variety of succulent (5)
- 21 Other ranks trapped by river in spate (7)

Down

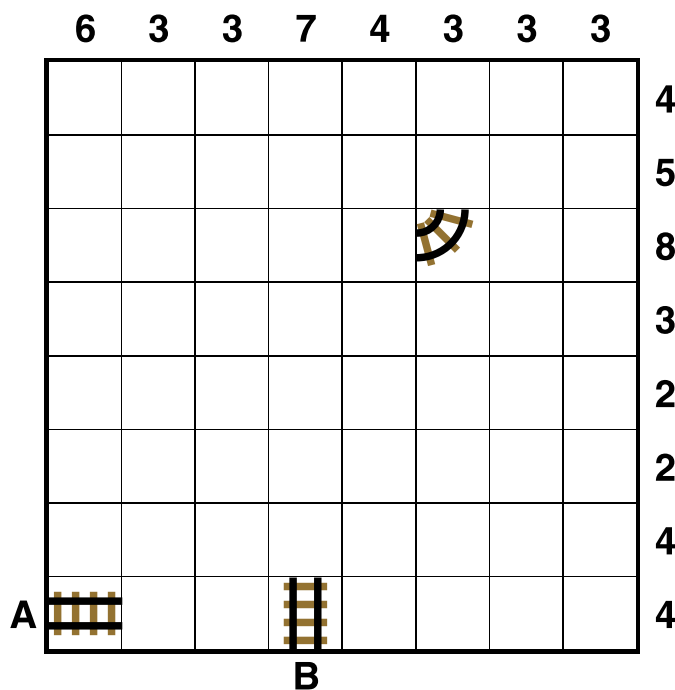
- 1 Unwell after cold hotel — could be this (5)
- 2 Book making new use of cyclopean idea? (13)
- 3 Dance from part of east Angola (5)
- 4 Queen perhaps ordered throne (6)
- 5 Blasphemous university academic article on ecstasy (7)
- 6 After classical show musical mostly returns, just having left theatre (4-9)
- 7 Reward any temp might work for? (7)
- 11 Garden plant type of yucca hospital regularly wanted (7)
- 12 Deadlock that is broken by politician: fool! (7)
- 14 Whisky adulterated by the French? With this one may get hammered (6)
- 17 Provide food consumed in common room initially (5)
- 18 Power oared boat using mass for energy (5)

Suko No 4103



Place the numbers 1 to 9 in the spaces so that the number in each circle is equal to the sum of the four surrounding spaces, and each colour total is correct

Train Tracks No 2232



Lay tracks to enable the train to travel from village A to village B. The numbers indicate how many sections of track go in each row and column. There are only straight sections and curved sections. The track cannot cross itself.

Word watch David Parfitt

Ustulation

- a An instance of breaking out in spots
- b The picking of hops
- c The act of burning

Platband

- a A series of flat-topped hills
- b A troupe of marching musicians
- c A border of flowers in a garden

Shamble

- a A strong metal chain
- b A dense thorny thicket
- c A butcher's market stall

Tetonor Easy No 461

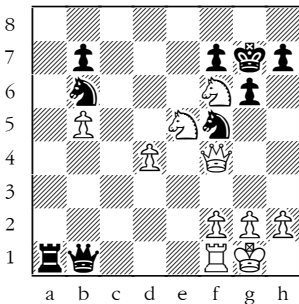
390	41	280	51
38	270	18	230
65	43	330	37
33	286	35	306

5	10	11	13	13	15	17	18	26	28	30
---	----	----	----	----	----	----	----	----	----	----

When complete, the strip below the grid can be split into eight pairs of numbers. Adding the numbers in a pair gives one of the 16 numbers in the grid. Multiplying them gives a different number in the grid. For example, a 4 and 6 in the strip could be paired to make 10 (4+6) and 24 (4x6) in the grid. Enter each sum below the corresponding number in the grid. The blanks in the strip must be deduced, bearing in mind the numbers are listed in ascending order.

The next Tetonor puzzle will appear on Thursday

Winning Move



White to play.
This position is from Secheres-Lupulescu, Bucharest 2024.

This is a tricky position. Black has powerful threats along the back rank and 1... Rxb1+ and mate next move. As the black queen cannot be captured White would like to protect the f1-rook but this does not seem possible. Nevertheless, White can maintain the balance with a clever sequence. Can you find it?

Codeword No 5202

18	22	17	22	8	2		22		15	10	1	17
9		22		6		22	7	1	14			9
13	20	25	10	20	13		14		4	20	1	15
6				9		14		17		12		15
14	23	9	10	25	22	26	1	14		3	14	1
		13				26		8		22		14
1	20	10	25	14	12		4	5	10	13	14	12
20		15		18		20				21		
6	20	20		18	14	15	20	1	10	22	13	25
2		12		24		15		20				14
19	9	17	11		22		9	13	14	16	14	13
22			20	9	8	25		14		22		6
4	10	1	25		8		26	12	9	13	6	5

A B C D E F G H I J K L M N O P Q R S T U V W X Y Z

1	2	3	4	5	6	7	8	9	10	11	12	13
14	15	16	17	18	19	20	21	22	23	24	25	26

Every letter in this crossword-style grid is represented by a number from 1 to 26. Each letter of the alphabet appears in the grid at least once. Use the letters already provided to work out the identity of further letters. Enter letters in the main grid and the smaller reference grid until all 26 letters of the alphabet have been accounted for. Proper nouns are excluded. *Yesterday's solution, right*

Cluelines **Stuck on Codeword?** To receive 4 random clues call 0901 293 6262 or text TIMECODE to 64343. Calls cost £1 plus your telephone company's network access charge. Texts cost £1 plus your standard network charge. For the full solution call 0905 757 0142. Calls cost £1 per minute plus your telephone company's network access charge. SP: Spoke, 0333 202 3390 (Mon-Fri, 9am-5.30pm).

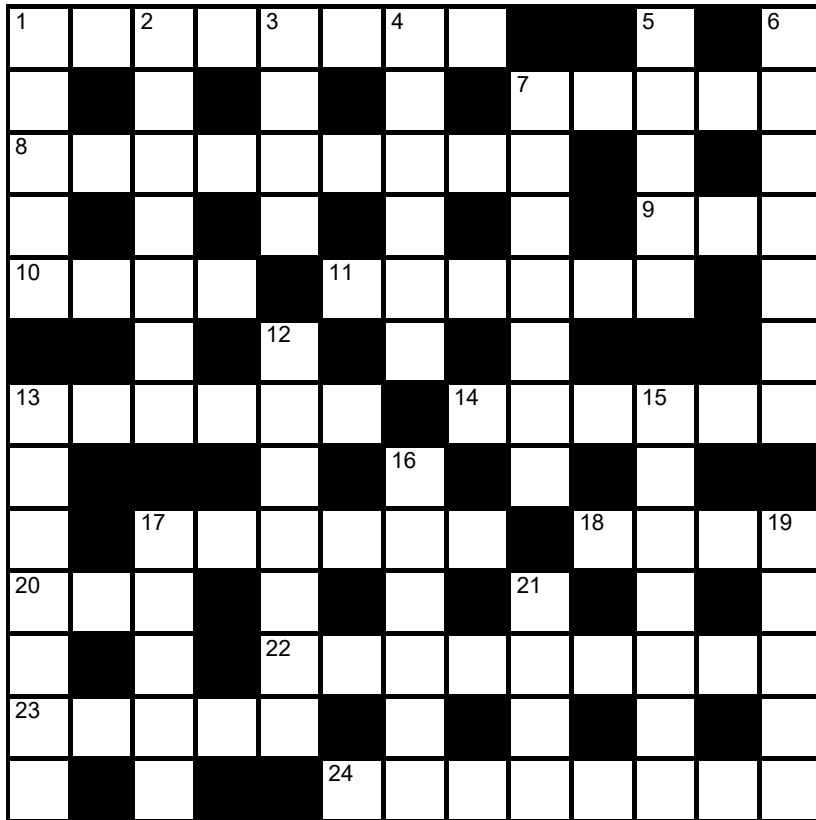
Lexica Easy No 7381

Hard No 7382

...	●	O	G	R	L	Y	D	E	A	O	L	E	...
...	●						●						...
...	N						M	C					...
...	P						U	E					...
...	D						N	B					...
...	L						C	I					...
...	U						H	T					...
...
...	U	A	●	E	U	G	O	R	I	I	D	N	...

Slide the letters either horizontally or vertically back into the grid to produce a completed crossword. Letters are allowed to slide over other letters

times2 Crossword No 9518



Across

- 1 Children's leisure period (8)
- 7 Fierce fire (5)
- 8 White ornamental variety of gypsum (9)
- 9 Everyone (3)
- 10 Thin, svelte (4)
- 11 Accident-prone (6)
- 13 Marzipan ingredient (6)
- 14 Brave, spirited (6)

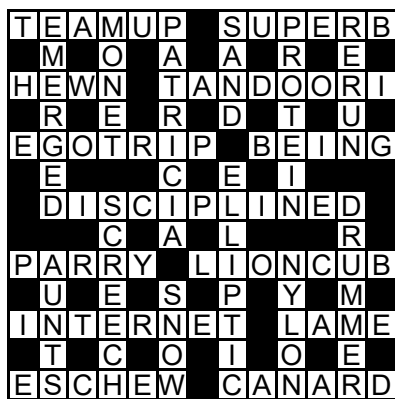
- 17 Shoe without laces (4-2)

- 18 Applaud (4)
- 20 Variety, kind (3)
- 22 In another place (9)
- 23 Dainty in appearance (5)
- 24 Drifting microorganisms (8)

Down

- 1 Mountain summits (5)
- 2 Reversion to ancestral traits (7)
- 3 Urban rail vehicle (4)
- 4 Courage, resolve (6)
- 5 SE Asian language (5)
- 6 Earth science (7)
- 7 Blackberry bush (7)
- 12 Animate (7)
- 13 Deposit of rock holding usable water (7)
- 15 Accumulate (items in a set) (7)
- 16 Titbit (6)
- 17 Small boat (5)
- 19 Maintain feathers (5)
- 21 Long-necked bird (4)

Solution to Crossword 9517



Need help with today's puzzle? Call 0905 757 0143 to check the answers. Calls cost £1 per minute plus your telephone company's network access charge. SP: Spoke, 0333 202 3390 (Mon-Fri 9am-5.30pm).

KenKen Medium No 6194

12×	14+			8+	
	3-	3-	5-		
12×			2÷	2÷	
	10+			15+	3
		1-			2-
2-		6×			

All the digits 1 to 6 must appear in every row and column. In each thick-line "block", the target number in the top left-hand corner is calculated from the digits in all the cells in the block, using the operation indicated by the symbol.

© 2010 KENKEN PUZZLE & TIM NEXTOV, DIST. BY UPS, INC. WWW.KENKEN.COM

Futoshiki No 4742

1		>		
			>	
			^	
		∇		∇
	>	3		

Fill the blank squares so that every row and column contains each of the numbers 1 to 5 once only. The symbols between the squares indicate whether a number is larger (>) or smaller (<) than the number next to it.

Kakuro No 3701

	12	35	23	4		6	39		19	14
20						4			16	
36						8			4	
15				27					29	
7			6			27				
	13					14			16	
	13	27	16			10				26
27						6			8	
					7				7	
33								12		
16			33					13		
8			4							

© PUZZLER MEDIA

Fill the grid using the numbers 1 to 9 only. The numbers in each horizontal or vertical run of white squares add up to the total in the triangle to its left or above it. The same number may occur more than once in a row or column, but not within the same run of white squares.

Quintagram®

Solve all five cryptic clues using each letter underneath once only

1 Ruin siege weapon after retreating (3)

— — —

2 Style of new dome (4)

— — — —

3 Sailor with paddle finally found on the ship (6)

— — — — — —

4 Caught docile or wild animal (9)

— — — — — — — —

5 A hypocritical talk about nobleman's book-keeper (10)

— — — — — — — — — —

A	A	A	A	A	B	C	C
C	C	D	D	D	E	E	I
L	M	M	N	N	O	O	O
O	O	R	R	R	T	T	U

Brain Trainer

EASY	14	x 3	+ 12	50% OF IT	+ 6	÷ 3	+ 17	³ / ₄ OF IT	- 4	x 4	ANSWER	
MEDIUM	35	+ 79	x 3	¹ / ₂ OF IT	x 3	- 98	60% OF IT	+ 71	90% OF IT	- 94	ANSWER	
HARDER	129	x 7	+ 885	¹ / ₄ OF IT	+ 744	x 2	⁵ / ₆ OF IT	40% OF IT	- 778	x 5	ANSWER	

Polygon



From these letters, make words of **three** or more letters, always including the central letter. Answers must be in the *Concise Oxford Dictionary*, excluding capitalised words, plurals, conjugated verbs (past tense etc), adverbs ending in LY, comparatives and superlatives.
How you rate 14 words, average; 19, good; 24, very good; 30, excellent

Yesterday's answers

cha, chant, chat, halt, hat, haul, haunt, hula, hunt, hut, lah, latch, lath, launch, lunch, natch, nautch, nth, nuchal, tach, than, uhlan, unlatch

Cell Blocks No 5085

2	3	2			4
			2		2
		5			
	2		2		2
	4		2		
				6	
5	6				

Divide the grid into square or rectangular blocks, each containing one digit only. Every block must contain the number of cells indicated by the digit inside it.

Set Square No 3704

	÷		×	8	= 32
+		+		-	
	×		-		= 49
-		×		+	
	×		×	3	= 42
=		=		=	
6		14		6	

Enter each of the numbers from 1 to 9 in the grid, so that the six sums work. We've placed two numbers to get you started. Each sum should be calculated left to right or top to bottom.

Please note, BODMAS does not apply

Killer Moderate No 9442

19	9		14	6	12	3	8	22
	10	14						
			10	16	5		15	
					9	17		12
13		16	4					
6			20	14		4		13
9	17	3		8	13		6	
					12			4
12		5		10		15		

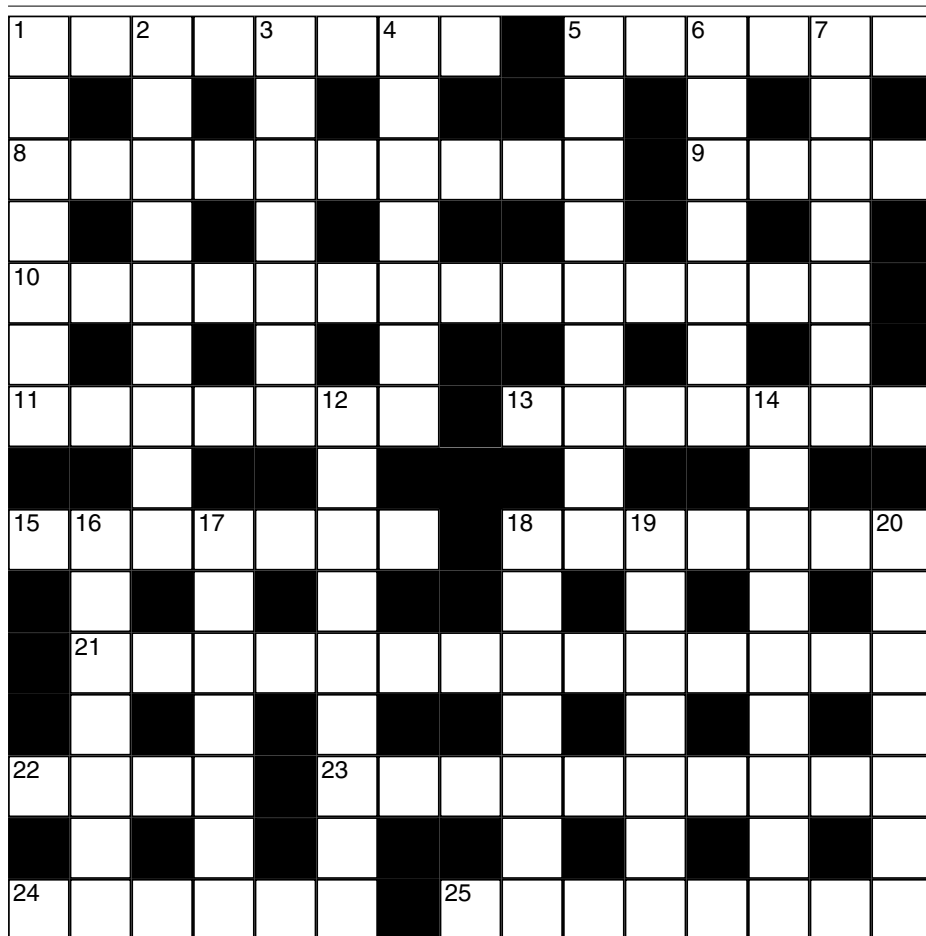
Killer Tough No 9443

20		21	7		15			
7					23			
		7		22			18	
16	17			18		26	20	
		29						
18			19				8	
					5	7		30
21		24						
					7			

As with standard Sudoku, fill the grid so that every column, every row and every 3x3 box contains the digits 1 to 9. Each set of cells joined by dotted lines must add up to the target number in its top-left corner. Within each set of cells joined by dotted lines, a digit cannot be repeated.

Cluelines Stuck on Sudoku, Killer or KenKen? Call 0901 293 6263 before midnight to receive four clues for any of today's puzzles. Calls cost £1 plus your telephone company's network access charge. SP: Spoke, 0333 202 3390 (Mon-Fri 9am-5.30pm).

Times Crossword 28,904



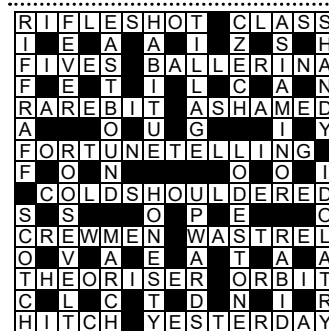
ACROSS

- 1 Tribal conflict involving northern part of UK (8)
- 5 Blank-looking worker on short holiday (6)
- 8 South American couple bearing a lot of intense pain (10)
- 9 Amphibian wife found in trap (4)
- 10 Wise director initially hailed in new autobiographical book (5,4,5)
- 11 Chemically analyse it in time and degree (7)
- 13 It may remove dirt rapidly at first with hot water (7)
- 15 Aquatic bird priest caught boarding vessel (7)
- 18 Casual workers conserving extremely large places of worship (7)
- 21 Survey originally catching on in period of revival (14)
- 22 Feint bringing endless disgrace (4)
- 23 Lingering sensation provided by different star at fete (10)
- 24 Cross sequence of letters from tetchy bridegroom (6)
- 25 The French woman ultimately wielding supreme power (8)

DOWN

- 1 Mimic law enforcer unknown on twin-hulled vessel (7)
- 2 For treatment, attain old type of drug? (9)
- 3 State of trap set up on river to the north (7)
- 4 Dawn's salary hike supporting daily (7)
- 5 Priest originally taking grain round large chamber (9)
- 6 In place of wedding feast, a way to serve game (7)
- 7 What the unsuccessful might get currently in this place? (7)
- 12 Old militia do what a conductor might do (9)
- 14 Carelessly lose pay in Pacific island group (9)
- 16 Worldly Liberal wearing blue? (7)
- 17 Earnings right for a new resident (7)
- 18 Reportedly hear military engineers constructing an ancient warship (7)
- 19 Small bagpipe group has broken making no sound (7)
- 20 Italian citizen's former nurse disturbed by current directions (7)

Yesterday's solution 28,903



Check today's answers by ringing 0905 757 0141 by midnight. Calls cost £1 per minute plus your telephone company's network access charge. SP: Spoke 0333 202 3390.

Solutions

Quick Cryptic 2662

C	J	C	I	P	U	T
H	E	A	T	H	E	N
U	S	I	T	E	B	U
T	O	P	I	C	A	I
Z	E	C	I	N	L	S
P	I	R	O	U	E	T
A	N	R	E	R	E	A
H	A	M	S	U	R	R
Y	E	A	R	I		
C	U	R	T	A	I	N
R	I	L	K	A	W	O
A	G	A	V	E	L	A
G	D	D	E	E	R	E

Codeword 5201

E	D	I	T	O	R	O	A	S	T
A	I	R	E	X	A	S			
M	U	F	T	I	W	H	I	T	L
I	F	C	O	D	S	O			
T	R	U	C	K	E	R	I	M	A
Y	S	F	E	T	C	H	F	E	N
G	O	I	O	S					
L	U	P	I	N	S	Q	U	A	L
O	I	J	L	N	L	L			
B	R	A	V	U	R	A	T	H	U
E	N	R	N	I	D	H			
O	O	Z	E	D	I	E	S	E	L

Kakuro 3700

8	7	9	2	4	1	9	7
1	2	8	9	6	5	3	8
3	1	6	2	4		9	7
9	5		1	3		8	3
			5	9	8	7	6
7	4	1	3	8	6	9	
9	8	6		7	9		9
	9	7		5	6	8	1
2	1		8	7	4	2	6
1	3		4	2	1		9

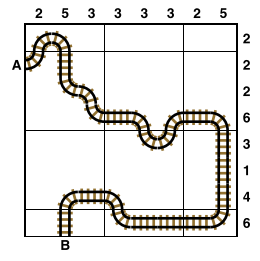
Sudoku 14,871

7	2	9	1	4	5	3	8	6
6	3	1	7	8	2	4	5	9
4	5	8	3	6	9	1	2	7
3	7	6	4	2	1	8	9	5
8	1	5	9	7	6	2	4	3
2	9	4	8	5	3	6	7	1
1	4	3	5	9	8	7	6	2
5	8	2	6	3	7	9	1	4
9	6	7	2	1	4	5	3	8

GK Crossword 231

F	L	A	U	T	I	S	T	P	R	A	W	N	S
I	Z	H	A	S	E	H	T						
L	O	U	S	E	M	A	T	T	P	R	I	O	R
L	R	F	O	Y	U	T	A						
M	E	R	A	S	I	A	L	B	R	E	N	T	
O	M	E	E	L	R	A							
R	I	F	K	I	N	D	S	A	I	G	O	N	
E	R	S											
F	I	S	H	E	S	P							
M	C	E	L	A	N	L							
E	L	A	N	D	A	U	T	O	P	I	S	T	
R	S	R	L	E	A	I	R						
C	A	S	T	O	R	O	I	L	R	O	M	E	O
I	E	A	M	L	T	B	E						
A	G	E	N	D	A	M	A	R	I	A	N	D	

Train Tracks 2231



Sudoku 14,872

2	6	4	7	8	3	5	1	9
9	1	8	5	2	6	3	4	7
5	3	7	1	9	4	6	8	2
6	8	3	2	1	5	7	9	4
4	7	9	6	3	8	1	2	5
1	5	2	9	4	7	8	6	3
3	9	6	8	5	2	4	7	1
8	4	1	3	7	9	2	5	6
7	2	5	4	6	1	9	3	8

Cell Blocks 5084

3			4		
7					
	3		4		
9			3		
			6	2	
					3
	3		2		

Set Square 3703

4	x	9	-	7
÷		x		÷
2	x	6	÷	1
+		x		+
5	+	8	+	3

Lexica 7379

T	R	Y	I	N	G
H		I		O	
E	V	E		D	
O		L			
R	U	D	E		
Y					

Sudoku 14,873

5	6	4	8	7	3	2	9	1
1	3	7	4	9	2	6	5	8
2	9	8	1	6	5	4	7	3
7	8	1	3	2	9	5	6	4
3	5	2	6	4	1	7	8	9
9	4	6	7	5	8	1	3	2
4	2	9	5	3	6	8	1	7
6	1	3	2	8	7	9	4	5
8	7	5	9	1	4	3	2	6

Futoshiki 4741

4	>	2	5	3	1
5	3	<	4	1	2
3	1	2	4	5	
2	4	1	5	3	
1	5	3	2	<	4

KenKen 6193

6	5	3	2	4	1
3	6	4	5	1	2
2	3	5	1	6	4
5	2	1	4	3	6
1	4	2	6	5	3
4	1	6	3	2	5

Lexica 7380

B	O	I	L	E	D
R			I		A
O			N		T
A	R	R	I	V	E
D			N		D
			G		

Today's solutions

Killer 9440

6	3	7	2	9	1	8	4	5
1	8	4	7	5	3	9	6	2
2	5	9	6	8	4	3	7	1
3	9	8	1	4	5	7	2	6
4	2	5	8	7	6	1	9	3
7	6	1	3	2	9	4	5	8
5	7	2	9	1	8	6	3	4
9	1	3	4	6	2	5	8	7
8	4	6	5	3	7	2	1	9

Killer 9441

3	7	4	9	6	5	2	1	8
9	5	1	4	2	8	7	6	3
6	2	8	3	7	1	9	4	5
7	4	2	5	9	6	8	3	1
5	3	9	1	8	4	6	2	7
1	8	6	7	3	2	5	9	4
2	9	3	8	4	7	1	5	6
4	1	7	6	5	9	3	8	2
8	6	5	2	1	3	4	7	9

Cryptic Quintagram

- 1 Mar
- 2 Mode
- 3 Aboard
- 4 Crocodile
- 5 Accountant

Suko 4103

9	2	1
7	5	8
6	3	4

Brain Trainer

- Easy 68
- Medium 194
- Harder 6,040

Word watch

- Ustulation** (c) The act of burning or roasting (*OED*)
- Platband** (c) A border of flowers in a garden (*Collins*)
- Shamble** (c) A butcher's market stall (*Chambers*)

Chess – Winning Move

1 Nh5+! saves the day. If 1 ... gxf5 then 2 Qg5+ Kf8 3 Qd8+ Kg7 4 Qg5+ leads to a perpetual check draw. After the alternative 1 ... Kf8 White can regroup with 2 Ng3! protecting the rook on f1 and preventing 2 ... Nxf3 due to 3 Qxf7 mate. After 2 Ng3 Black's best is 2 ... Qb2, when the position is complicated but equal

Samurai medium

Fill each grid so that every column, every row and every 3x3 box contains the digits 1 to 9. Where the puzzles overlap, the rows and columns do not go beyond their usual length.

			4	6				3				4	6				8	6							
8			4			9								3	9			5	8						
			7			2			9				8					3	4						
			7	8	4	5						2			5										
		6	2									9			4										
		4					9	7					6	1			7	2							
		5			1	3			6	3					1			4	6						
				3			5					6					4			7					
7			9							9	7							1							
					3							1	6												
			1			4	2	6	9	5															
			6	8							2														
					9			7	5							9					5				
2					7					8					3	9									
4	6					9					4	6			1	7			4						
5	7			1	3							8	7					9							
6					8											8	1								
		2					4											4							
7	4							2																	
3	2			8	9																				
		9			7																				

Futoshiki

Fill the blank squares so that every row and column contains each of the numbers 1 to 5 once only. The symbols between the squares indicate whether a number is larger (>) or smaller (<) than the number next to it.

□	□	□	>	□	□	
□	□	□		□	□	
^		^				
□	5	□		□	□	
□	>	□	>	□	4	
					v	
□	□	□		□	<	□

Train Tracks

Lay tracks to enable the train to travel from village A to village B. The numbers indicate how many sections of track go in each row and column. There are only straight sections and curved sections. The track cannot cross itself.

	5	4	2	1	2	7	5	7	
A	□	□	□	□	□	□	□	□	1
	□	□	□	□	□	□	□	□	4
	□	□	□	□	□	□	□	□	5
	□	□	□	□	□	□	□	□	4
	□	□	□	□	□	□	□	□	5
	□	□	□	□	□	□	□	□	6
	□	□	□	□	□	□	□	□	5
	□	□	□	□	□	□	□	□	3
								B	

Sudoku fiendish

				2	
	2	7	3		9
	5		6		4
2			4	3	9
	3	5	8		4
		1	7	5	
8		4	5		3
	3	6			

Killer tricky

Fill the grid so that every column, every row and every 3x3 box contains the digits 1 to 9. Each set of cells joined by dotted lines must add up to the target number in its top-left corner. Within each set of cells joined by dotted lines, a digit cannot be repeated.

14	23			15		20		
		17			9			
12			7		17		14	
		6		15		10	22	
12	7	12		9	10			
		13					17	
7	17	8	9		12			19
			20			15	4	
	13							

Suko

17	12	
25	16	

15	9	21
----	---	----

Place the numbers 1 to 9 in the spaces so that the number in each circle is equal to the sum of the four surrounding spaces, and each colour total is correct

Codeword

Every letter in the crossword-style grid, right, is represented by a number from 1 to 26. Each letter of the alphabet appears in the grid at least once. Use the letters already provided to work out the identity of further letters. Enter letters in the main grid and the smaller reference grid until all 26 letters of the alphabet have been accounted for. Proper nouns are excluded.

	17	24	9	22	5	17	25		17	12	17	10
1		17				19		22		17		14
10	26	2	14	19	6	13		26	15	2	26	25
19		14		6		19		8		16		25
7	23	6	21	14		5	14	19	25	7	9	
23				10		6		26		17		5
22	17	20	26	13	9		17	6	9	4	17	9
11		23		11		24		13				22
	17	10	7	14	19	10		23	6	22	26	13
1		22		7		23		17		26		26
25	14	13	13	14		7	26	25	23	18	26	10
19		25		15		21				26		9
22	13	9	26		22	S	26	23	3	19	10	26

A B C D E F G H I J K L M N O P Q R S T U V W X Y Z

1	2	3	4	5	6	7	8	9	10	11	H	12	13
14	15	16	17	18	19	20	21	22	S	I	24	25	26

Mini Sudoku

Fill in the grid so that every column, every row and every 3x2 box contains the digits 1 to 6

	1			5	
5	6			2	4
	5			3	
	4	2	5	6	
	3	5	2	4	

Solutions in tomorrow's Times2

THE  TIMES

MindGames Tuesday April 30 2024
Brain boost puzzles

Yesterday's solutions

SAMURAI

3	6	2	5	9	1	8	7	4	6	5	3	2	7	1	9	8	4			
7	5	1	2	8	4	6	3	9	1	8	9	4	6	3	7	2	5			
4	8	9	6	3	7	1	5	2	4	2	7	9	5	8	6	3	1			
5	9	4	7	6	8	3	2	1	3	9	4	7	8	2	1	5	6			
1	2	8	4	5	3	7	9	6	2	1	5	6	3	9	4	7	8			
6	7	3	1	2	9	4	8	5	8	7	6	5	1	4	2	9	3			
8	4	5	9	7	6	2	1	3	9	5	6	7	4	8	3	2	6	5	1	9
2	3	6	8	1	5	9	4	7	3	8	2	5	6	1	8	9	7	3	4	2
9	1	7	3	4	2	5	6	8	7	4	1	9	3	2	1	4	5	8	6	7
						6	9	2	1	7	4	3	8	5						
						4	3	5	2	6	8	1	7	9						
						7	8	1	5	9	3	6	2	4						
8	1	2	6	7	4	3	5	9	4	2	7	8	1	6	2	4	5	3	9	7
6	5	9	1	2	3	8	7	4	6	1	9	2	5	3	8	7	9	6	4	1
7	4	3	9	8	5	1	2	6	8	3	5	4	9	7	3	6	1	2	8	5
1	3	8	4	5	6	2	9	7				6	2	1	7	9	4	5	3	8
5	2	6	8	9	7	4	1	3				9	8	4	5	2	3	1	7	6
9	7	4	2	3	1	5	6	8				3	7	5	1	8	6	4	2	9
3	6	5	7	4	2	9	8	1				7	4	2	6	5	8	9	1	3
4	8	1	5	6	9	7	3	2				5	3	8	9	1	2	7	6	4
2	9	7	3	1	8	6	4	5				1	6	9	4	3	7	8	5	2

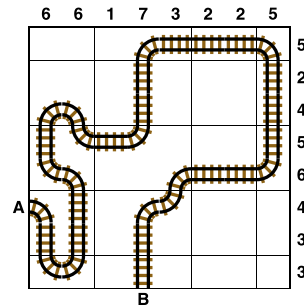
SUKO

6	1	7
20	17	
8	5	4
18	20	
3	2	9

MINI SUDOKU

1	2	6	3	4	5
3	5	4	2	1	6
5	6	1	4	2	3
4	3	2	5	6	1
2	1	5	6	3	4
6	4	3	1	5	2

TRAIN TRACKS



FUTOSHIKI

3	5	2	>	1	4	
		^				
1	4	>	3	2	<	5
5	2	4	>	3	1	
4	3	1	5	2		
		v				
2	1	5	4	3		

SUDOKU

6	9	3	5	4	7	8	1	2
4	1	8	6	2	3	5	7	9
5	2	7	8	1	9	6	3	4
8	3	6	2	9	1	4	5	7
9	7	1	4	5	6	3	2	8
2	5	4	7	3	8	1	9	6
7	8	9	1	6	5	2	4	3
1	6	2	3	7	4	9	8	5
3	4	5	9	8	2	7	6	1

KILLER

9	5	2	3	8	6	4	1	7
1	4	6	5	9	7	3	8	2
3	8	7	4	2	1	6	9	5
7	2	9	1	4	3	5	6	8
4	1	8	6	5	2	7	3	9
6	3	5	9	7	8	1	2	4
8	7	1	2	3	4	9	5	6
5	6	4	8	1	9	2	7	3
2	9	3	7	6	5	8	4	1

CODEWORD

W	O	R	T	H	L	E	S	S	U	A		
I	E	A	U	S	T							
C	L	E	R	I	C	A	L		M	J		
C	R	Q	K	I	M	O	N	O				
G	A	L	A	U	Y			S				
N		P	E	E	L	A	S	T	E	R		
P		I	R	L	Q					N		
O	Z	O	N	E	T	O	F	U		S		
S	B		C	B	E	A	C	H				
T	H	O	U	G	H	E	L	R				
B	I				U	N	L	O	C	K	E	
O	U	S			R	I	H	E				
X	T				U	N	V	A	R	I	N	G