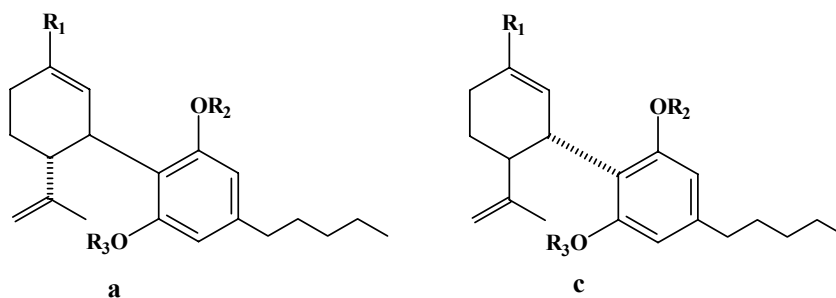
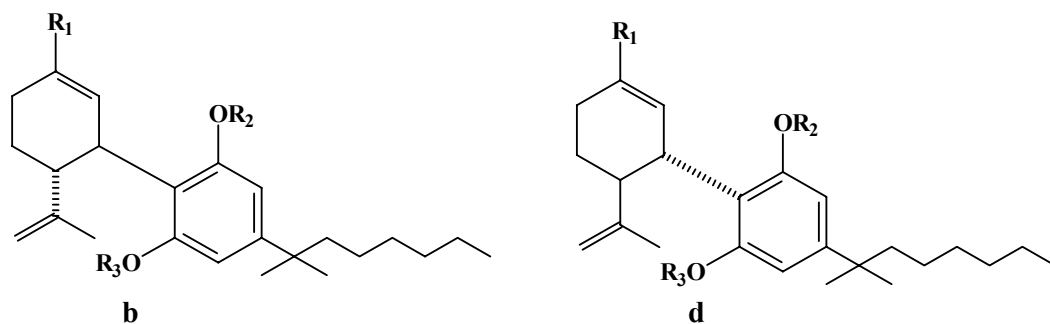


**Table S1. Binding of (-)- and (+)-CBD and their derivatives to the central (CB<sub>1</sub>) and peripheral (CB<sub>2</sub>) cannabinoid receptors.**



compound	R <sub>1</sub>	R <sub>2</sub>	R <sub>3</sub>	CB <sub>1</sub> (K <sub>i</sub> , nM)	CB <sub>2</sub> (K <sub>i</sub> , nM)
4a	CH <sub>3</sub>	H	H	> 10000	> 10000
4c	CH <sub>3</sub>	H	H	842 ± 36	203 ± 16
5a	CH <sub>3</sub>	CH <sub>3</sub>	CH <sub>3</sub>	> 10000	> 10000
5c	CH <sub>3</sub>	CH <sub>3</sub>	CH <sub>3</sub>	> 10000	> 10000
12a	CH <sub>2</sub> OH	H	H	> 10000	> 10000
12c	CH <sub>2</sub> OH	H	H	5.3 ± 0.5	101.0 ± 5.1
18a	COOH	H	H	> 10000	> 10000
18c	COOH	H	H	13.2 ± 0.4	321.8 ± 15.8

**Table S2. Binding of (-)- and (+)-CBD-DMH and their derivatives to the central (CB<sub>1</sub>) and peripheral (CB<sub>2</sub>) cannabinoid receptors.**



compound	R <sub>1</sub>	R <sub>2</sub>	R <sub>3</sub>	K <sub>i</sub> (nM)/CB <sub>1</sub>	K <sub>i</sub> (nM)/CB <sub>2</sub>
4b	CH <sub>3</sub>	H	H	> 10000	1800
4d	CH <sub>3</sub>	H	H	17.4 ± 1.8	211 ± 23
5b	CH <sub>3</sub>	CH <sub>3</sub>	CH <sub>3</sub>	> 10000	> 10000
5d	CH <sub>3</sub>	CH <sub>3</sub>	CH <sub>3</sub>	> 10000	< 10000
12b	CH <sub>2</sub> OH	H	H	4400	671 ± 12
12d	CH <sub>2</sub> OH	H	H	2.50 ± 0.03	44.0 ± 3.1
18b	COOH	H	H	> 1000	< 10000
18d	COOH	H	H	5.8 ± 0.7	155.5 ± 5.3