

In the format provided by the authors and unedited.

Widespread intronic polyadenylation inactivates tumour suppressor genes in leukaemia

Shih-Han Lee^{1,5}, Irtisha Singh^{2,3,5}, Sarah Tisdale¹, Omar Abdel-Wahab⁴, Christina S. Leslie² & Christine Mayr^{1*}

¹Cancer Biology and Genetics Program, Memorial Sloan Kettering Cancer Center, New York, NY, USA. ²Computational and Systems Biology Program, Memorial Sloan Kettering Cancer Center, New York, NY, USA. ³Tri-I Program in Computational Biology and Medicine, Weill Cornell Graduate College, New York, NY, USA. ⁴Human Oncology and Pathogenesis Program, Memorial Sloan Kettering Cancer Center, New York, NY, USA. ⁵These authors contributed equally: Shih-Han Lee, Irtisha Singh. *e-mail: mayrc@mskcc.org

Figure 2a

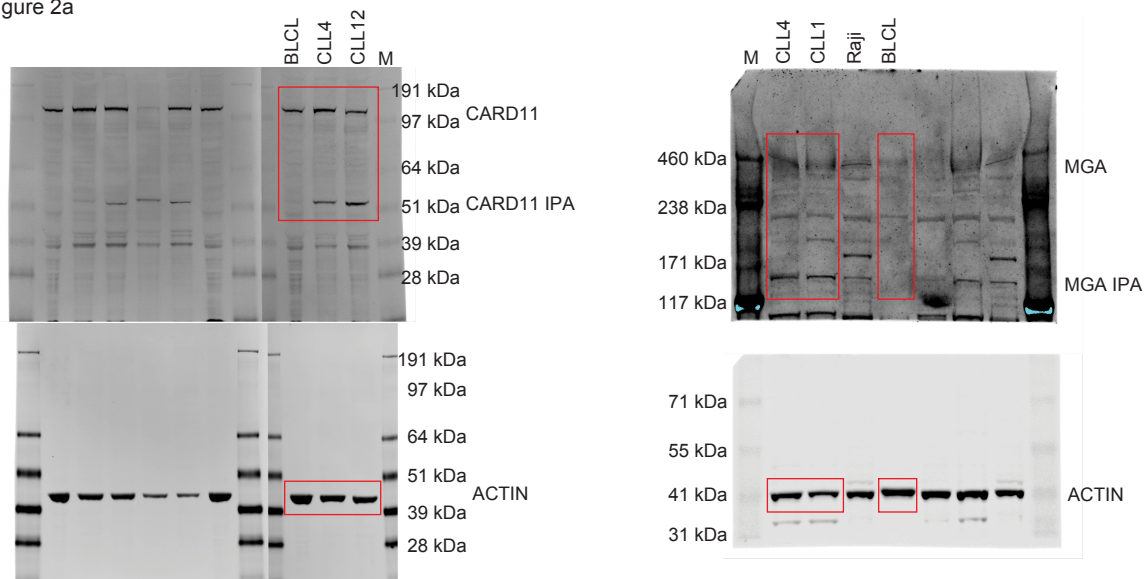
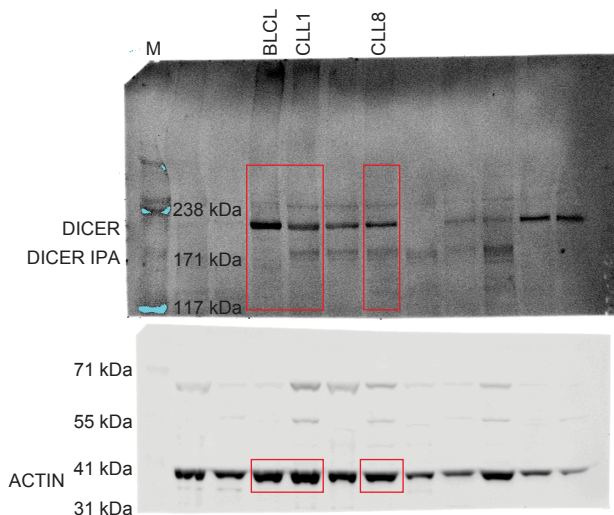
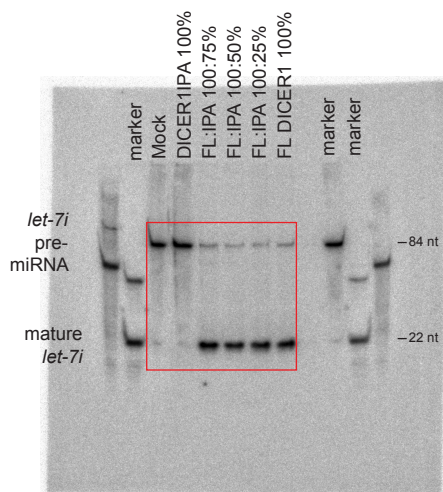


Figure 2d



For all Western blot gels, the loading control (ACTIN) is from the same gel as the experimental one

Figure 2e

Individual P values obtained from two-sided t-test for independent samples of values shown in Fig. 2e.

	MGA IPA vs GFP	MGA FL vs GFP	Equal variance
MYC	0.88	0.33	yes
TP53	0.70	0.07	yes
BLK	1E-4	6E-5	yes
ATF4	4E-8	0.003	yes
CDKN1B	1E-4	2E-5	yes
NME1	0.25	0.003	yes
HNRNPA1	0.21	8E-5	yes
MCM5	0.03	0.02	yes
CDC25A	0.03	9E-6	yes
BAX	0.04	0.02	yes
CDK4	0.003	0.01	yes
MCM4	0.008	9E-6	yes

Figure 3b

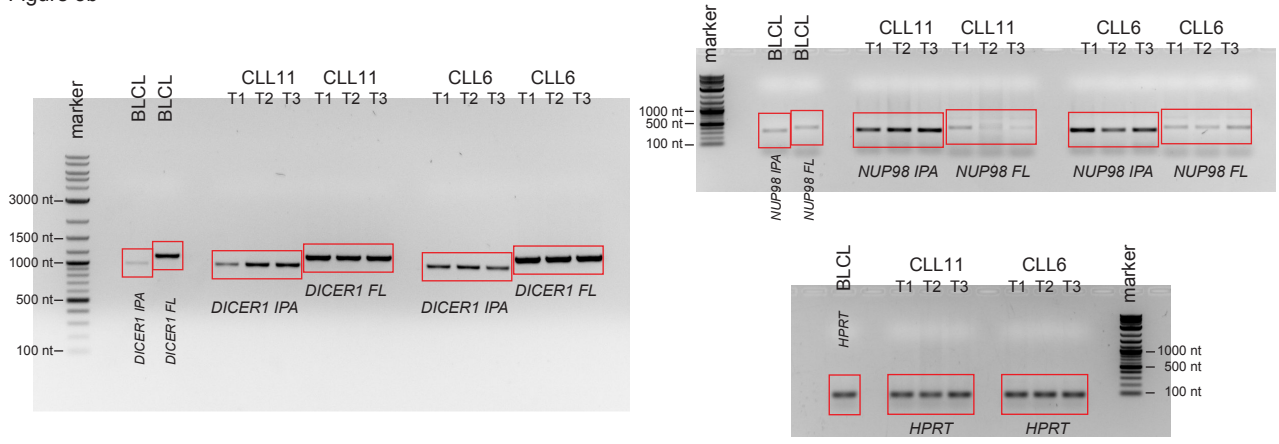
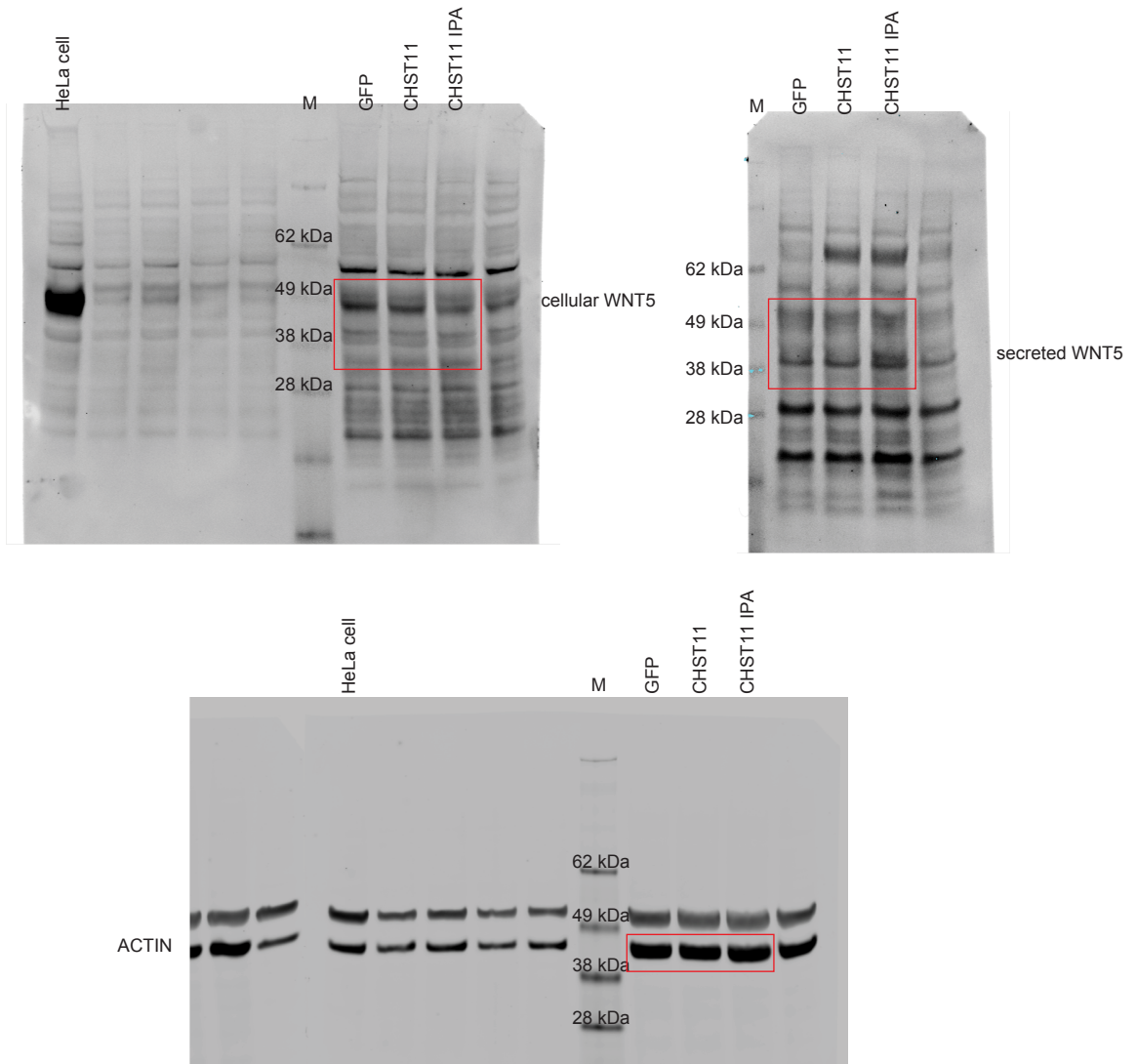
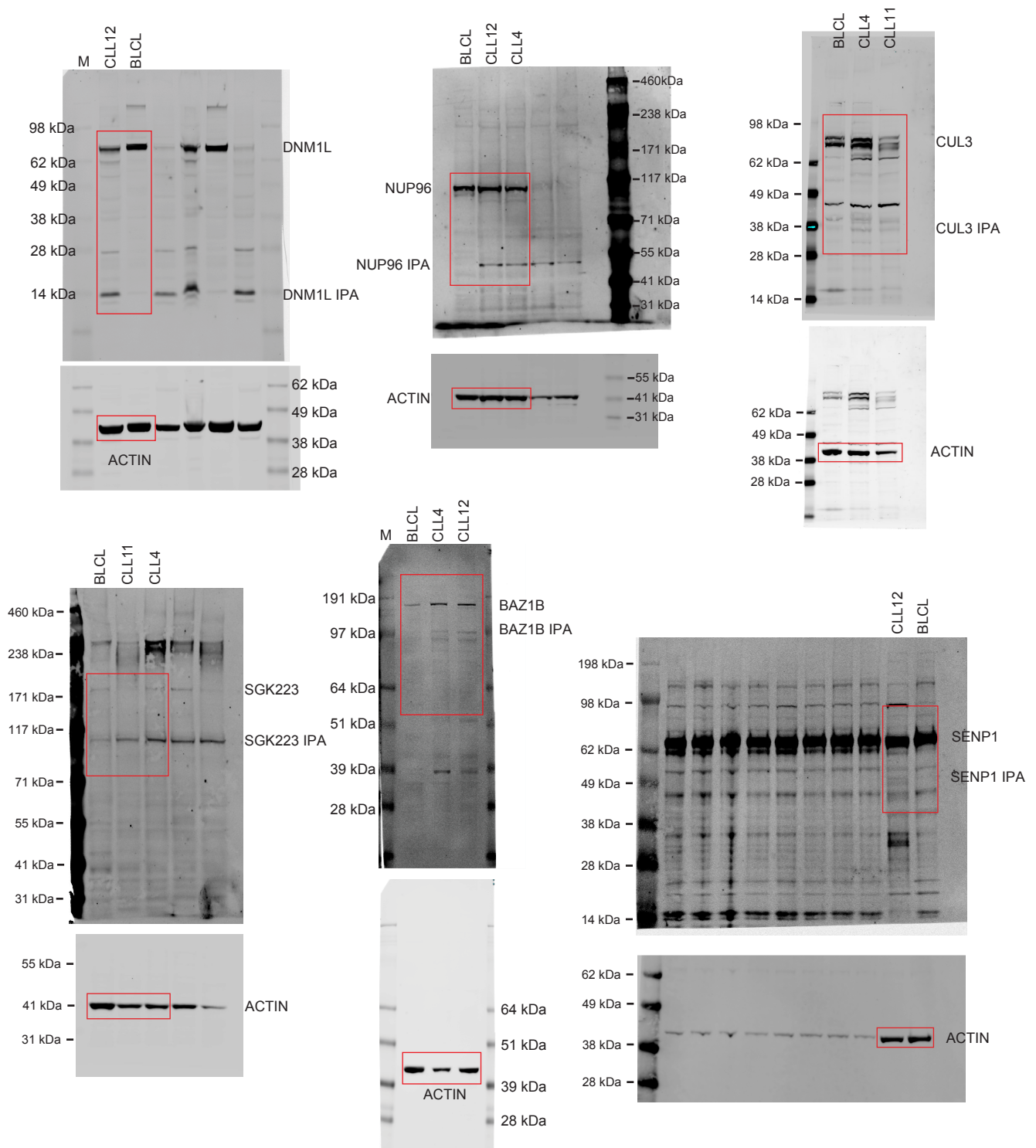


Figure 4f



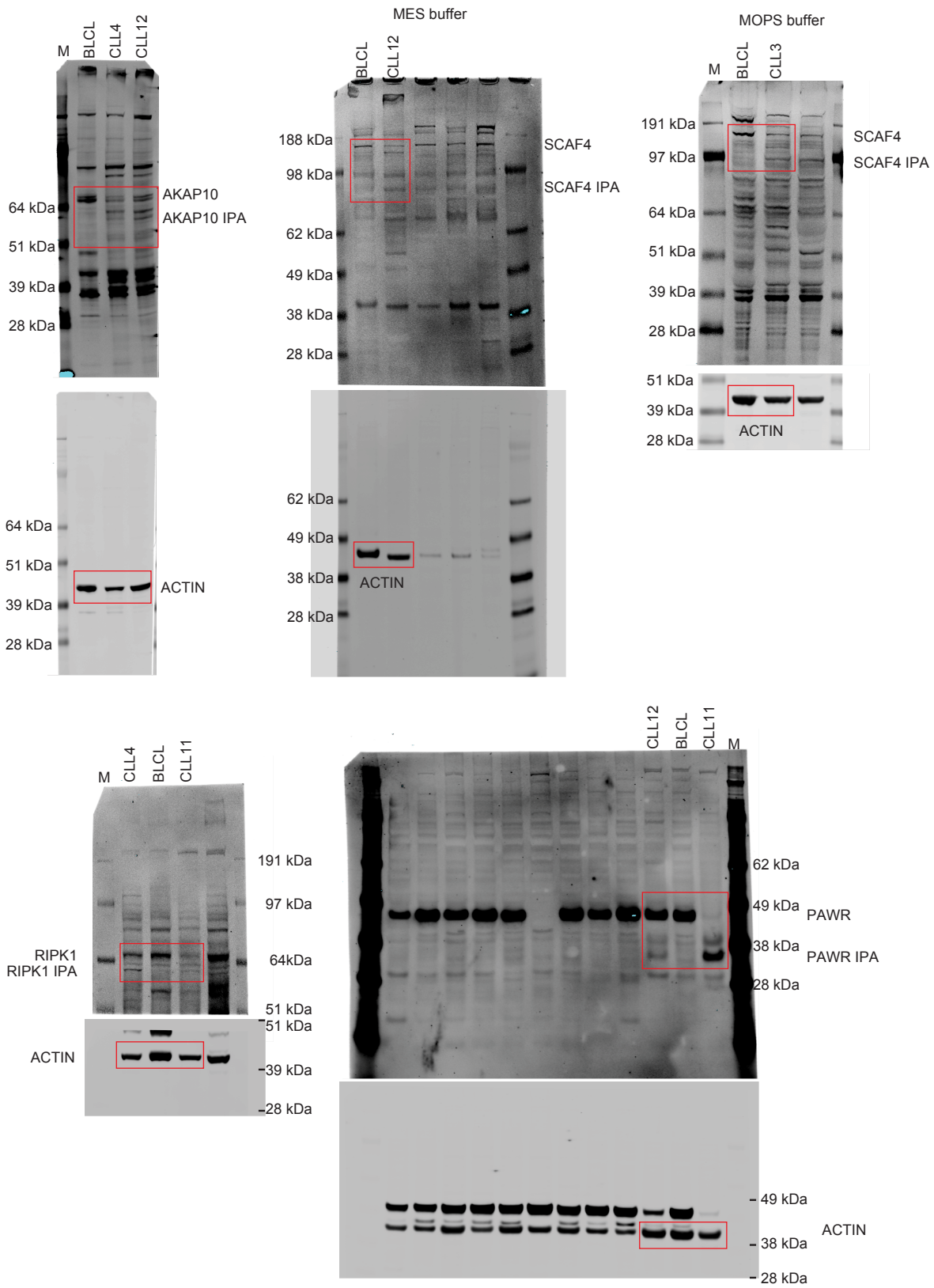
For all Western blot gels, the loading control (ACTIN) is from the same gel as the experimental one.

Extended Data Figure 4



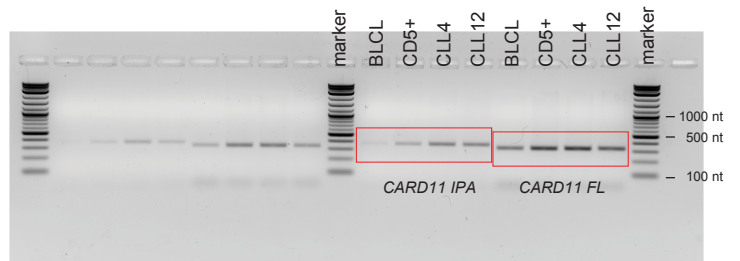
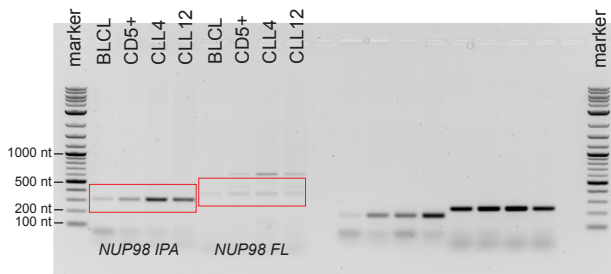
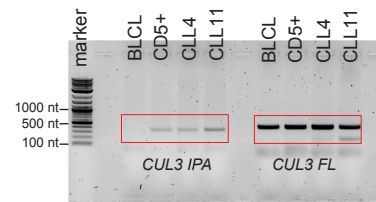
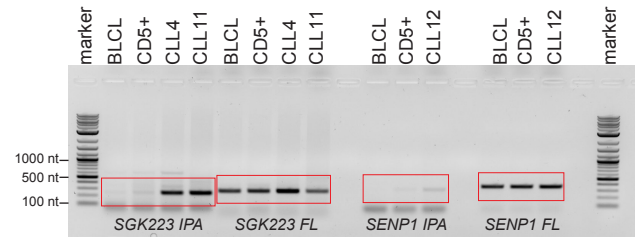
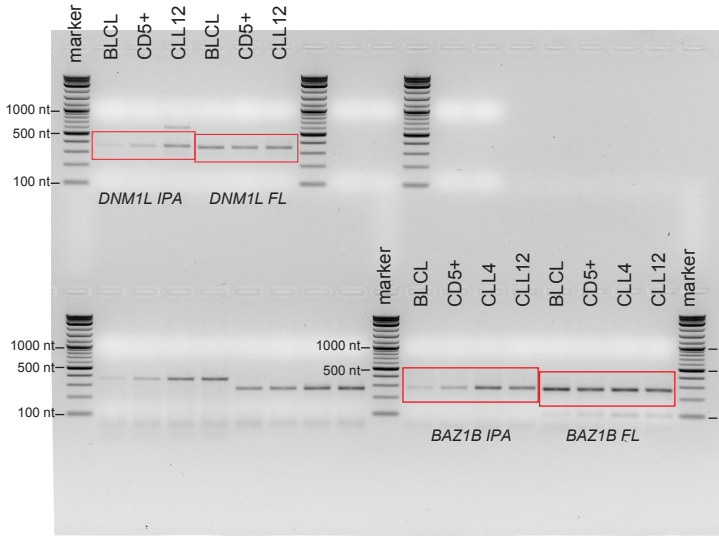
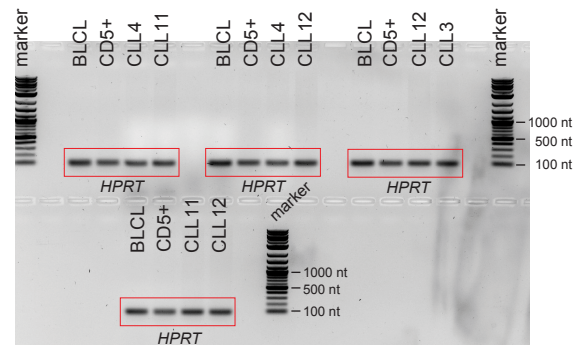
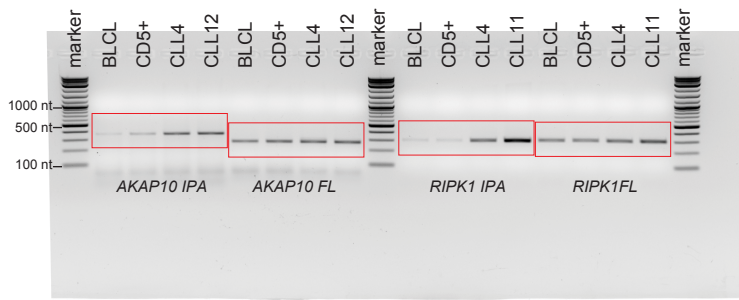
For all Western blot gels, the loading control (ACTIN) is from the same gel as the experimental one.

Extended Data Figure 4

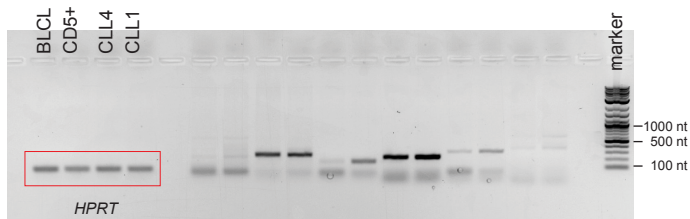
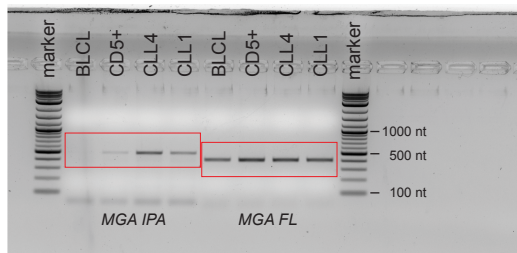
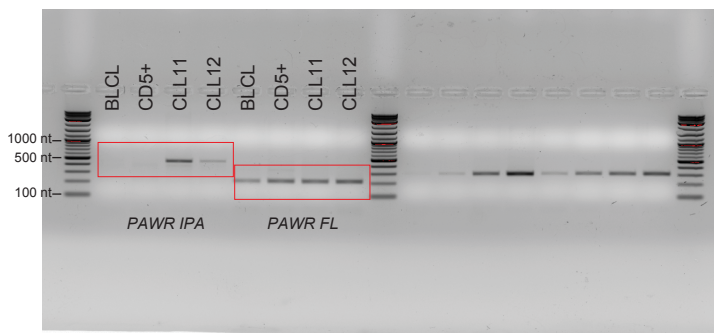
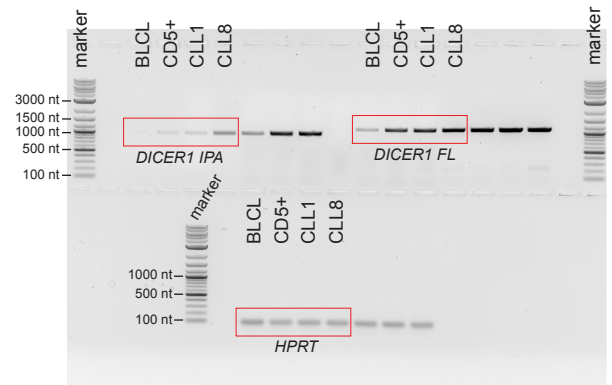
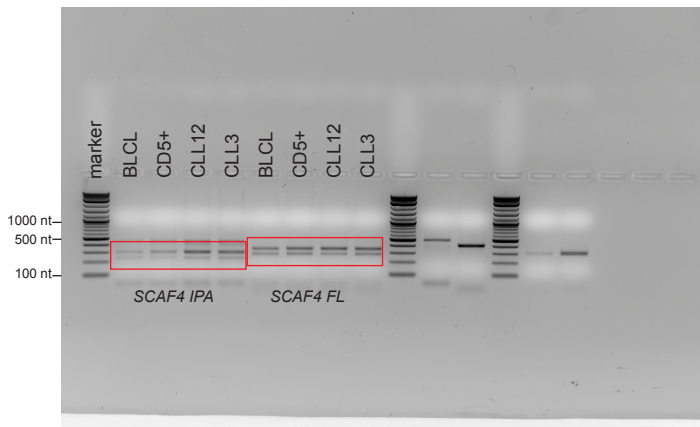


For all Western blot gels, the loading control (ACTIN) is from the same gel as the experimental one.

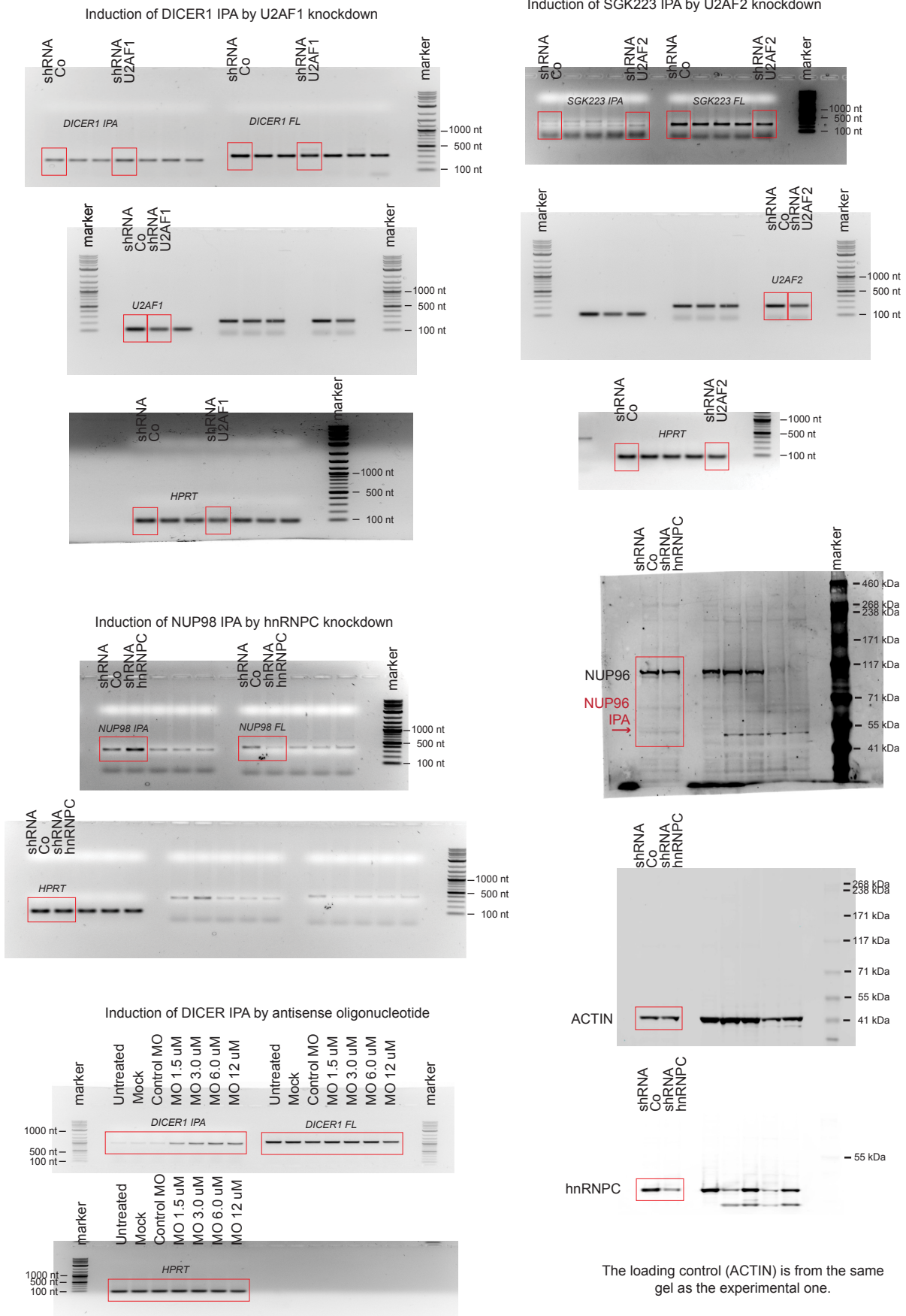
Extended Data 5a



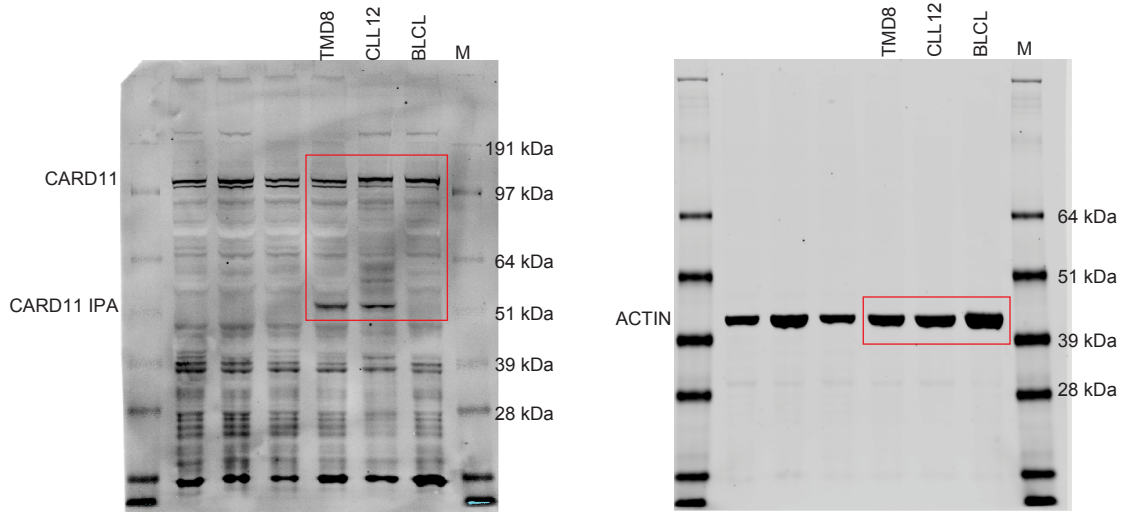
Extended Data 5a



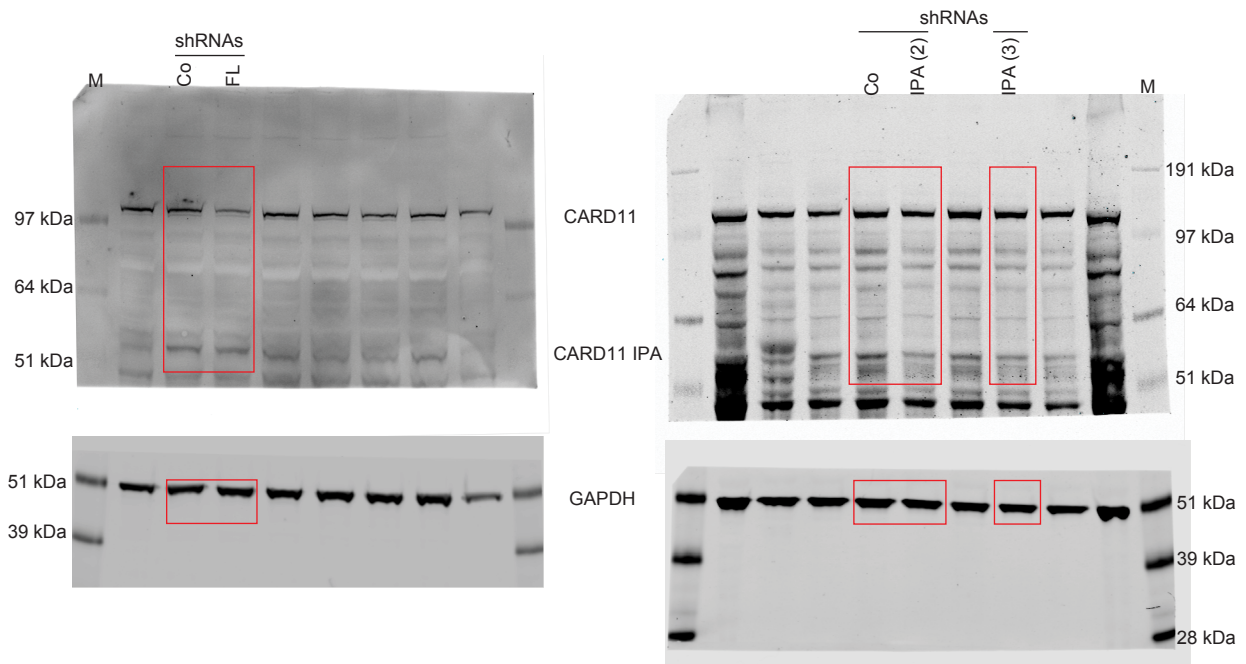
Extended Data Figure 5b



Extended Data Figure 5b

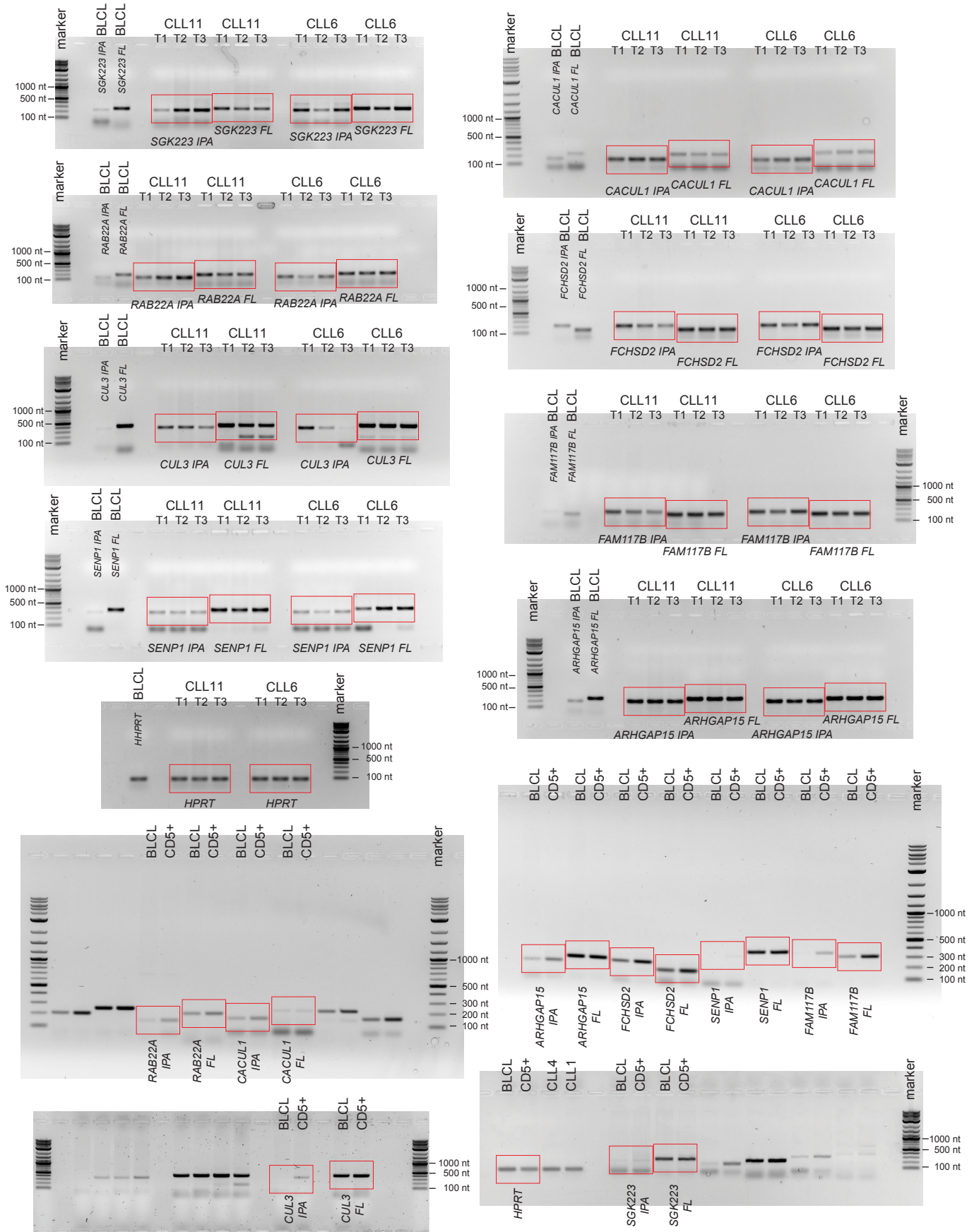


Extended Data Figure 5c

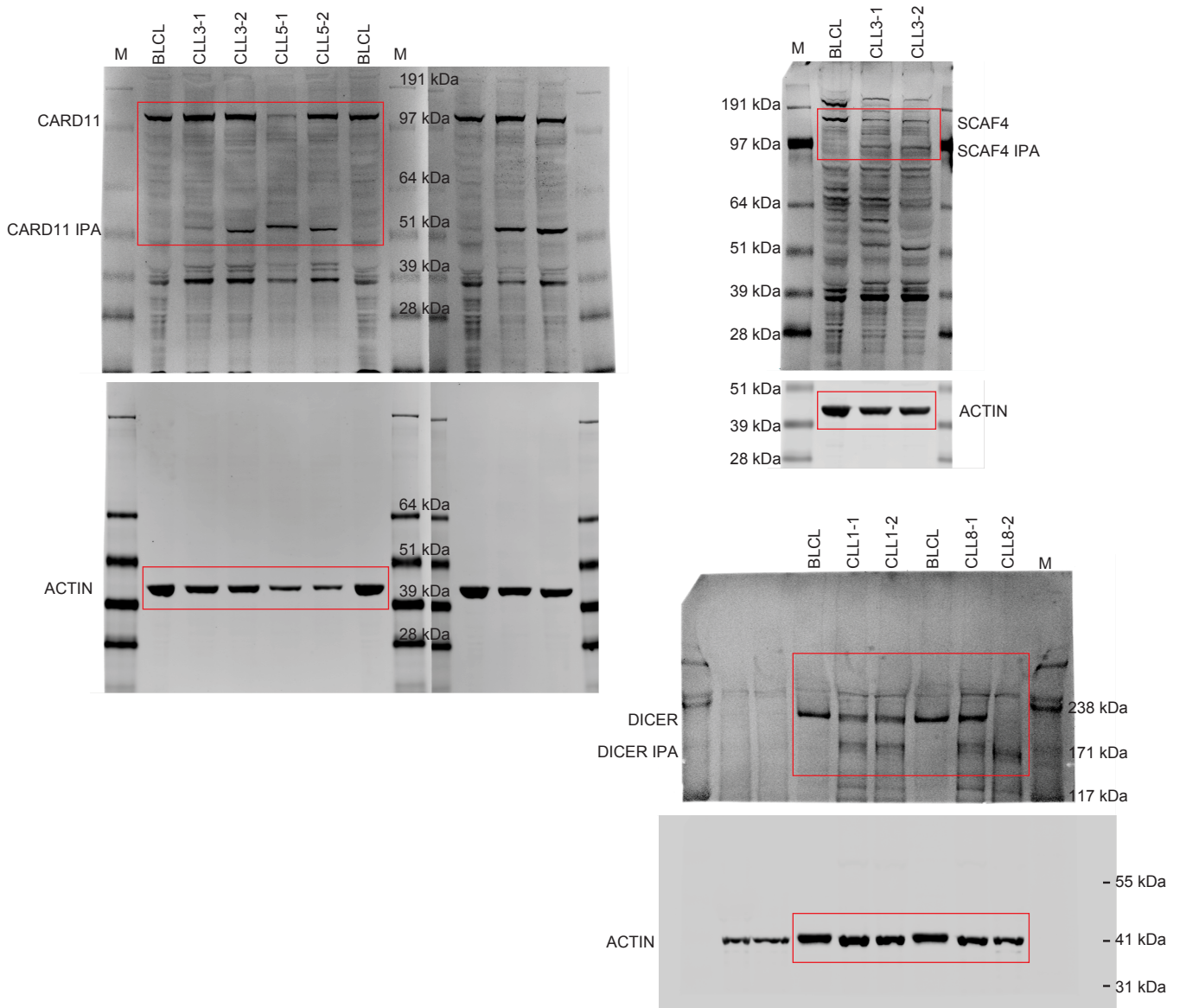


For all Western blot gels, the loading control (ACTIN/GAPDH) is from the same gel as the experimental one.

Extended Data Figure 5c

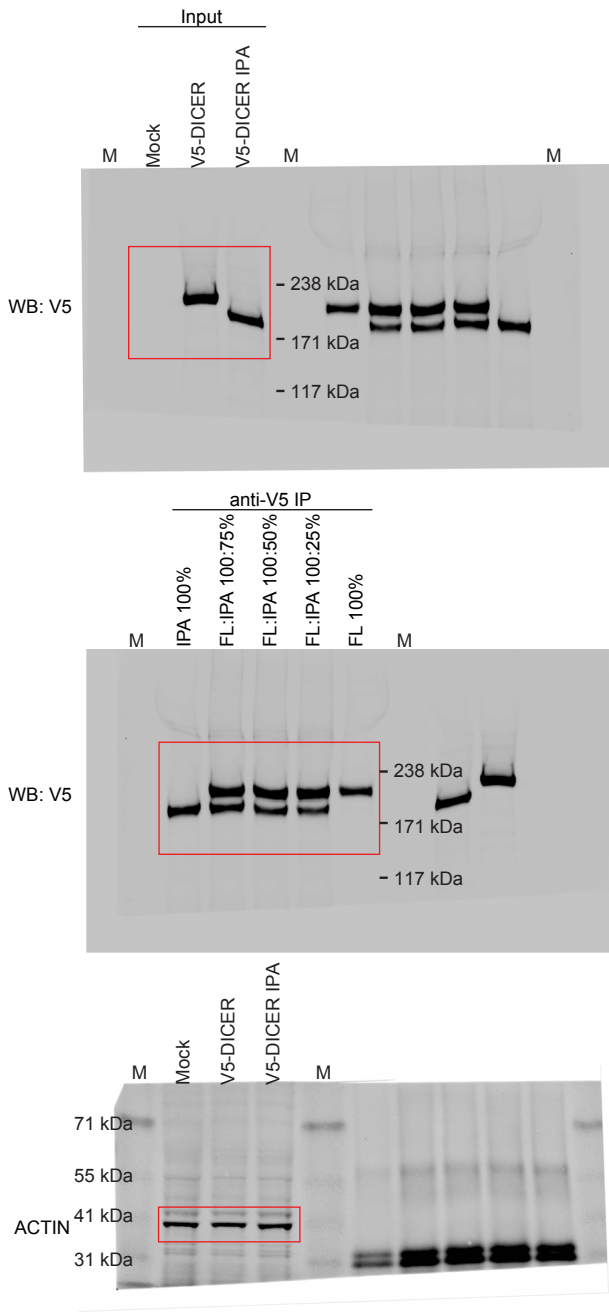


Extended Data Figure 5d



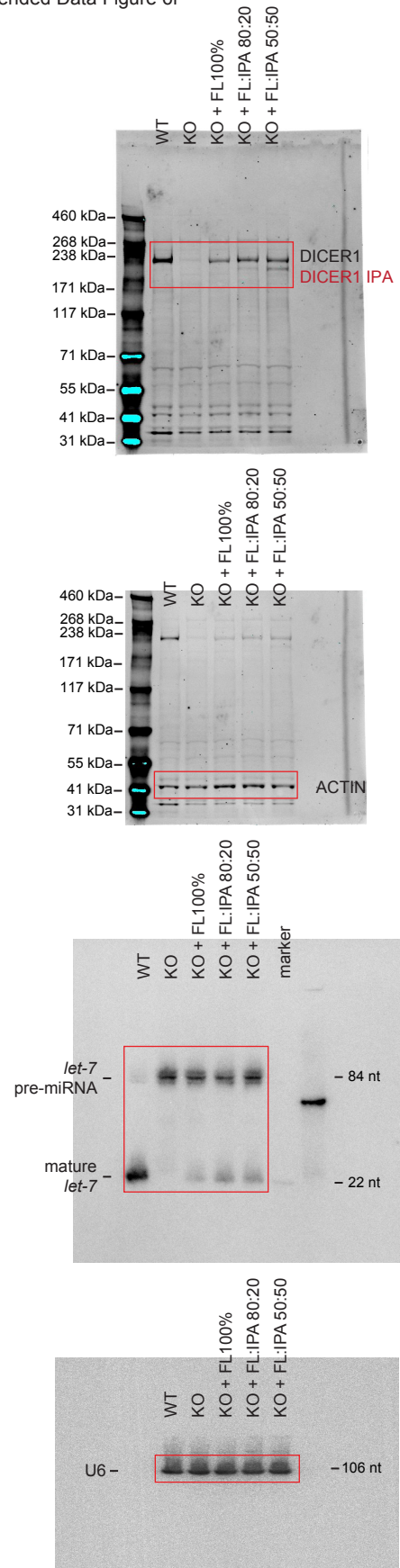
For all gels, the loading control (ACTIN) is from the same gel as the experimental one above it.

Extended Data Figure 6e

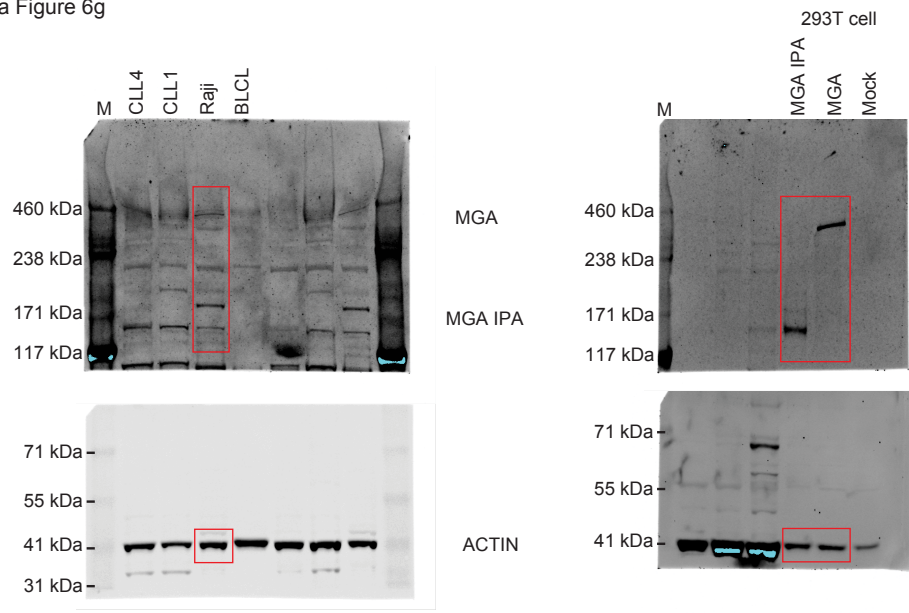


For all Western blot gels, the loading control (ACTIN) is from the same gel as the experimental one.

Extended Data Figure 6f

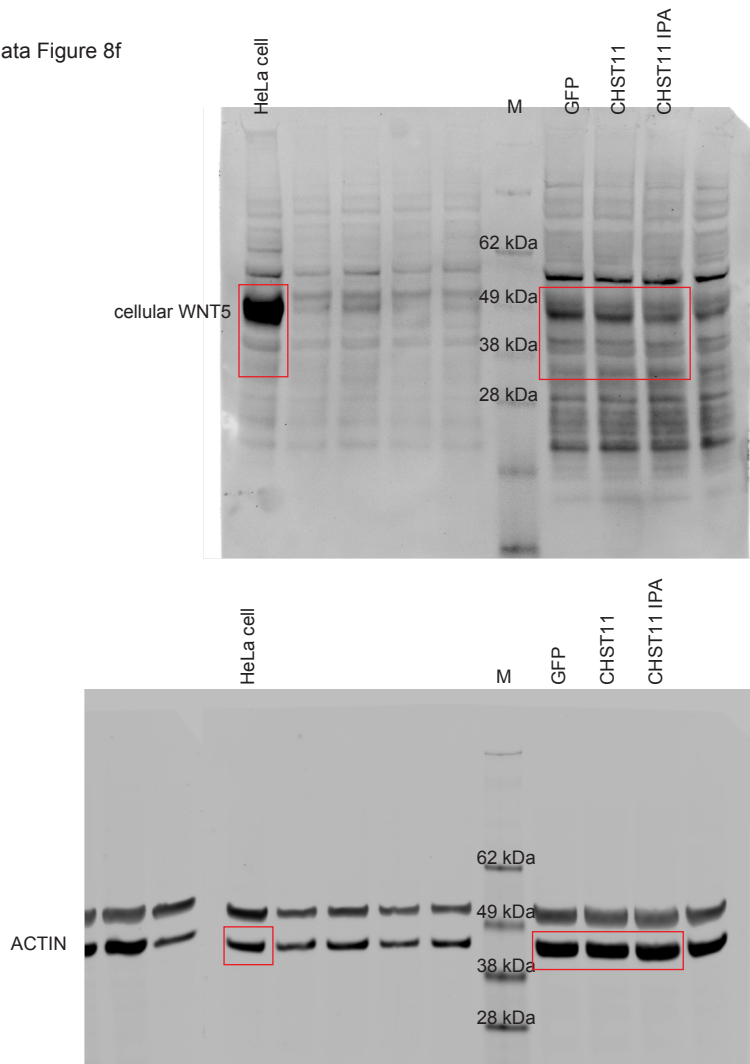


Extended Data Figure 6g



For all Western blot gels, the loading control (ACTIN) is from the same gel as the experimental one.

Extended Data Figure 8f



For all Western blot gels, the loading control (ACTIN) is from the same gel as the experimental one.