






## Review Article

# A Data Mining-Based Analysis of Medication Rules in Treating Bone Marrow Suppression by Kidney-Tonifying Method

Xing You,<sup>1,2</sup> Yinkun Xu ,<sup>1,2</sup> Jin Huang ,<sup>1</sup> Yaofeng Zhi ,<sup>1,2</sup> Fengzhen Wu,<sup>3</sup> Fuping Ding,<sup>4</sup> Jiaying Liang ,<sup>1,2</sup> Zhihui Cui,<sup>1</sup> Jingyan Xu,<sup>1</sup> and Jin Zhang <sup>1,2</sup>

<sup>1</sup>School of Basic Medicine, Guangzhou University of Chinese Medicine, Guangzhou, Guangdong Province, 510006, China

<sup>2</sup>The Research Center of Basic Integrative Medicine, Guangzhou University of Chinese Medicine, Guangzhou, Guangdong Province, 510006, China

<sup>3</sup>School of Medical Information Engineering, Guangzhou University of Chinese Medicine, Guangzhou, Guangdong Province, 510006, China

<sup>4</sup>School of Nursing, Guangzhou University of Chinese Medicine, Guangzhou, Guangdong Province, 510006, China

Correspondence should be addressed to Jin Zhang; zhjin@gzucm.edu.cn

Received 7 September 2018; Revised 9 December 2018; Accepted 20 December 2018; Published 3 February 2019

Guest Editor: Hwan-suck Chung

Copyright © 2019 Xing You et al. This is an open access article distributed under the Creative Commons Attribution License, which permits unrestricted use, distribution, and reproduction in any medium, provided the original work is properly cited.

**Objective.** To investigate the rule of kidney-tonifying method in Chinese medicine for the treatment of bone marrow suppression (BMS), in order to provide evidence and references for the clinical application of herbs and formulae. **Design.** Collecting and sorting the information about the treatment of BMS related to kidney-tonifying (Bushen) method in Chinese medicine literatures on databases including Chinese National Knowledge Infrastructure (CNKI), and Chinese Biomedical Literature Database (CBM), establishing a database of BMS treating formulae after radiotherapy and chemotherapy with traditional Chinese medicine (TCM) kidney-tonifying method, and finally applying the relevant theories and techniques of data mining to analyze the medication rules of it. **Results.** A total of 239 formulae and 202 herbs were included in this database, in which the herbs occurred 2,602 times in general. The high frequency herbs included Astragali Radix (Huangqi), Atractylodis Macrocephalae Rhizoma (Baizhu), and Ligustri Lucidi Fructus (Nvzhenzi). The main herb categories were deficiency-tonifying herbs, blood-activating herbs, dampness-draining diuretic herbs, heat-clearing herbs, and digestant herbs. Deficiency-tonifying herbs accounted for 64.60% of the total number. A total of 8 clustering formulae are summarized according to cluster analysis and 26 herb suits association rules are identified by Apriori algorithm. **Conclusion.** The treatment of BMS is mainly based on the method of invigorating the spleen and tonifying the kidney and liver to strengthen healthy qi, supplementing with blood-activating herbs, and dampness-draining diuretic herbs to eliminate pathogenic factors.

## 1. Introduction

BMS is one of the major side effect that is produced during the treatment of cancer patients with radiation, chemotherapy and drugs, which affect seriously patients' radio- and chemotherapeutic process and even led to treatment failure, which has become a major and difficult problem in clinical practice [1, 2]. According to its syndrome manifestation, BMS belongs to consumptive disease or blood deficiency problem in TCM, and the corresponding curative effects have been achieved by using the methods of invigorating kidney qi, strengthening and replenishing spleen qi, and

activating blood and eliminating pathogenic factors [3, 4]. In particular, the kidney-reinforcing method based on the theoretical basis of traditional Chinese medicine, which is "kidney domains bone and produces marrow" and has been widely used due to its remarkable clinical effects, about which a large amount of clinical and experimental literatures are accumulated. Therefore, it is possible to apply data mining technology to analyze more effectively the mode of herbal prescription from the literatures, to explore the key herbs and common ones, and to discover the potential associations of them, which may benefit the diagnosis, treatment, and provision of BMS [5, 6].

## 2. Materials and Methods

**2.1. Data Source and Normalization.** By collecting and collating the literatures on the databases including CNKI, CBM, VIP database, and WANFANG database about the treatment of BMS after radiotherapy and chemotherapy in Chinese medicine and inputting them to the NoteExpress literature management software and eliminating the literatures which do not meet the requirements, such as reviews, thin sample or not representative cases, and proven reports and animal experiments, this study established a data information collection form and entered the filtered prescription information into it. When the data was collected and sorted, a total of 621 effective formulae were gained to build a database of Chinese medicine treatment of BMS. By inputting the keyword *kidney-tonifying*, 239 related formulae were retrieved, upon which a database of BMS formulae was established and was standardized and classified according to the standard name and Chinese medicine classification of *People's Republic of China Pharmacopoeia* (2015 Edition) [7] and *Chinese Medicine Dictionary* [8].

**2.2. Data Processing and Analysis.** A database of BMS treatment with kidney-tonifying formulae was established with the application of Excel 2013 and was converted into the format required by the data mining software. Programming and modelling the data with R language are done according to the data characteristics of Chinese medicine medication rules, within which the core herbs were clustered by Hierarchical clustering algorithm. For example, Vania M. Youroukova et al. analyzed the phenotype of severe bronchial asthma by using cluster analysis and obtained four clusters that provided reference for clinical treatment [9]. The Apriori algorithm in R language data mining software is used to analyze the association rules of core herbs, which is similar to Mateen Shaikh's applying association rule replacement test to test the relationship between genotype and phenotype, and deduced the genotype of candidate population [10].

## 3. Results

### 3.1. Descriptive Analysis Results

**3.1.1. Herb Frequency and Analysis.** Among the 239 formulae included in the analysis, there were 202 herbs of Chinese medicine included, and their occurrence frequency was 2,602 times. Of the highest frequency was the herb *Astragali Radix* (Huangqi), which occurs 184 times, with a frequency rate of 7.07%. The second was *Atractylodis Macrocephalae Rhizoma* (Baizhu), whose frequency was 129 times (4.96%); the *Ligustri Lucidi Fructus* (Nvzhenzi) ranked the third with 125 times and (4.80%). And the top-nine herbs, respectively, are *Astragali Radix* (Huangqi), *Atractylodis Macrocephalae Rhizoma* (Baizhu), *Lucidi Fructus* (Nvzhenzi), *Angelicae Sinensis Radix* (Danggui), *Lycii Frucyus* (Gouqizi), *Codonopsis Radix* (Dangshen), *Poria* (Fuling), *Rehmanniae Radix Praepapata* (Shudihuang), and *Spatholobi Caulis* (Jixueteng), whose frequencies all exceed 95 times, with their frequency rate higher than 3.65%, and their cumulative frequency

reached 41.12%. Herbs with a frequency more than 18 times are shown in Table 1, their properties were mainly warm and mild, and the cumulative frequency of formulae was 66.83%. The tastes of the herbs were mainly sweet, bitter, and pungent. The frequency of herbs meridian tropism into the spleen, kidney, and liver meridians surpassed 30%, among which the frequency of the spleen meridian was of the highest, which was 47.58%. The details of herbs properties distribution are shown in Table 2, and the herbs flavors details are shown in Table 3, and herbs meridian tropism is shown in Table 4.

**3.1.2. Frequency and Analysis of Herb Categories.** One hundred and eight high-frequency herbs with a frequency of 9 or more were categorized in this study. The details of herb categories and frequency are shown in Table 5, in which the top seven herb categories for treating BMS are deficiency-tonifying herbs, blood-activating herbs, dampness-draining herbs, heat-clearing herbs, digestant herbs, astringent herbs, and qi-regulating herbs, of which the cumulative frequency reached 80.46%, and deficiency-tonifying herbs occurred 1681 times which counts for 64.60% of the total number of uses and topped the list.

**3.2. Cluster Analysis Results.** Thirty-eight core herbs mentioned above were clustered by Hierarchical clustering algorithm in R language and were divided into 4-10 classes by system clustering. Considering Chinese medicine theory, 8 categories are more appropriate in this study, and they were named as cluster one to eight subsequently. The clustering details are shown in Figure 1.

**3.3. Results of Association Rules Analysis.** In this study, the R language data mining software was applied for modeling, and the Apriori algorithm was used to analyze the association rules of the core herbs above. The parameters were set as support degree  $\geq 20\%$  and confidence level  $\geq 85\%$  [11], upon which a total of 26 herb pairs and suits association rules were obtained, and the details of the association rules are shown in Table 6. The correlation rules are shown in Figure 2 and the combination matrix is shown in Figure 3, and visualization is shown in Figure 4. In Table 6,  $\{\text{Atractylodis Macrocephalae Rhizoma}(\text{Baizhu})\} \Rightarrow \{\text{Astragali Radix}(\text{Huangqi})\}$  is of the highest degree of support, which is 47.06%.  $\{\text{Codonopsis Radix}(\text{Dangshen}), \text{Poria}(\text{Fuling})\} \Rightarrow \{\text{Atractylodis Macrocephalae Rhizoma}(\text{Baizhu}), \text{Spatholobi Caulis}(\text{Jixueteng})\} \Rightarrow \{\text{Astragali Radix}(\text{Huangqi})\}$  is of the highest confidence, which is 94.44% and  $\{\text{Codonopsis Radix}(\text{Dangshen}), \text{Poria}(\text{Fuling})\} \Rightarrow \{\text{Atractylodis Macrocephalae Rhizoma}(\text{Baizhu})\}$  is of the highest degree of promotion, which is 1.68.

## 4. Discussion

**4.1. Strengthening the Spleen and Tonifying the Kidney and Supplementing the Liver and Kidney Are the Main Therapeutic Methods.** (1) The method of strengthening the spleen and tonifying the kidney is the most common method for treating BMS in kidney-tonifying method. The herbs used in the

TABLE 1: Herbs used over 40 times in prescriptions.

No.	Herb	Frequency	Rate (%)	Cumulative Frequency	Property	Flavor	Meridian	Tropism
1	Astragali Radix(Huangqi)	184	7.07%	7.07%	warm	sweet	spleen, lung	
2	Atractylodis Macrocephalae Rhizoma(Baizhu)	129	4.96%	12.03%	warm	Sweet, bitter	spleen, stomach	
3	Ligustri Lucidi Fructus(Nvzhenzi)	125	4.80%	16.83%	cool	Sweet, bitter	liver, kidney	
4	Angelicae Sinensis Radix(Danggui)	120	4.61%	21.44%	warm	Sweet, pungent	liver, heart, spleen	
5	Lycii Frucyus(Gouqizi)	119	4.57%	26.02%	mild	Sweet	liver, kidney	
6	Codonopsis Radix (Dangshen)	101	3.88%	29.90%	mild	Sweet	spleen, lung	
7	Poria(Fuling)	99	3.80%	33.70%	mild	Sweet, tasteless	heart, lung, spleen, kidney	
8	Rehmanniae Radix Praepapata(Shudihuang)	97	3.73%	37.43%	warm	Sweet	liver, kidney	
9	Spatholobi Caulis(Jixueteng)	96	3.69%	41.12%	warm	Bitter, Sweet	liver, kidney	
10	Glycyrrhizae Radix Et Rhizoma(Gancao)	90	3.46%	44.58%	mild	Sweet	heart, lung, spleen, stomach	
11	Psoraleae Fructus(Buguzhi)	80	3.07%	47.65%	warm	Pungent, bitter	kidney, spleen	
12	Corni Frucyus(Shanzhuyu)	55	2.11%	49.77%	warm	Sour, astringent	liver, kidney	
13	Aisni Corii Colla(Ejiao)	50	1.92%	51.69%	mild	Sweet	lung, liver, kidney	
14	Cuscutae Semen(Tusizi)	50	1.92%	53.61%	mild	Pungent, Sweet	liver, kidney, spleen	
15	Citri Reticulatae Pericarpium(Chenpi)	47	1.81%	55.42%	warm	Bitter, pungent	spleen, lung	
16	Polygoni Multiflori Radix(Heshouwu)	45	1.73%	57.15%	warm	Bitter, Sweet, astringent	liver, heart, kidney	
17	Polygonati Rhizoma(Huangjing)	45	1.73%	58.88%	mild	Sweet	spleen, lung, kidney	
18	Dioscoreae Rhizoma(Shanyao)	45	1.73%	60.61%	mild	Sweet	spleen, lung, kidney	
19	Epimedii Folium(Yinyanghuo)	45	1.73%	62.34%	warm	Pungent, Sweet	spleen, lung, kidney	
20	Pseudostellariae Radix(Taizishen)	37	1.42%	63.76%	mild	Sweet, bitter	liver, kidney	
21	Paeoniae Radix Alba(Baishao)	35	1.35%	65.10%	cold	Bitter, sour	spleen, lung	
22	Jujubae Fructus(Dazao)	33	1.27%	66.37%	warm	Sweet	liver, spleen	
23	Antler glue (Lujiaojiao)	30	1.15%	67.52%	warm	Sweet, salty	spleen, stomach, heart	
24	Pinelliae Rhizoma(Banxia)	29	1.11%	68.64%	warm	pungent	kidney, liver	
25	Ginseng Radix Et Rhizoma(Renshen)	26	1.00%	69.64%	warm	Sweet, bitter	spleen, lung, heart, kidney	
26	Crataegi Fructus(Shanzha)	25	0.96%	70.60%	warm	Sour, Sweet	spleen, stomach, liver	
27	Amomi Fructus(Sharen)	24	0.92%	71.52%	warm	pungent	spleen, stomach, kidney	
28	Rehmanniae Radix(Shengdihuang)	21	0.81%	72.33%	cold	Sweet	heart, liver, kidney	
29	Coicis Semen(Yiyiren)	21	0.81%	73.13%	cool	Sweet, tasteless	spleen, stomach, lung	
30	Eucommiae Cortex(Duzhong)	20	0.77%	73.90%	warm	Sweet	liver, kidney	
31	Ecliptae Herba(Mohanlian)	20	0.77%	74.67%	cold	Sweet, sour	kidney, liver	
32	Gigerii Endothelium Corneum(Jineijin)	18	0.69%	75.36%	mild	Sweet	spleen, stomach, small intestine, urinary bladder	

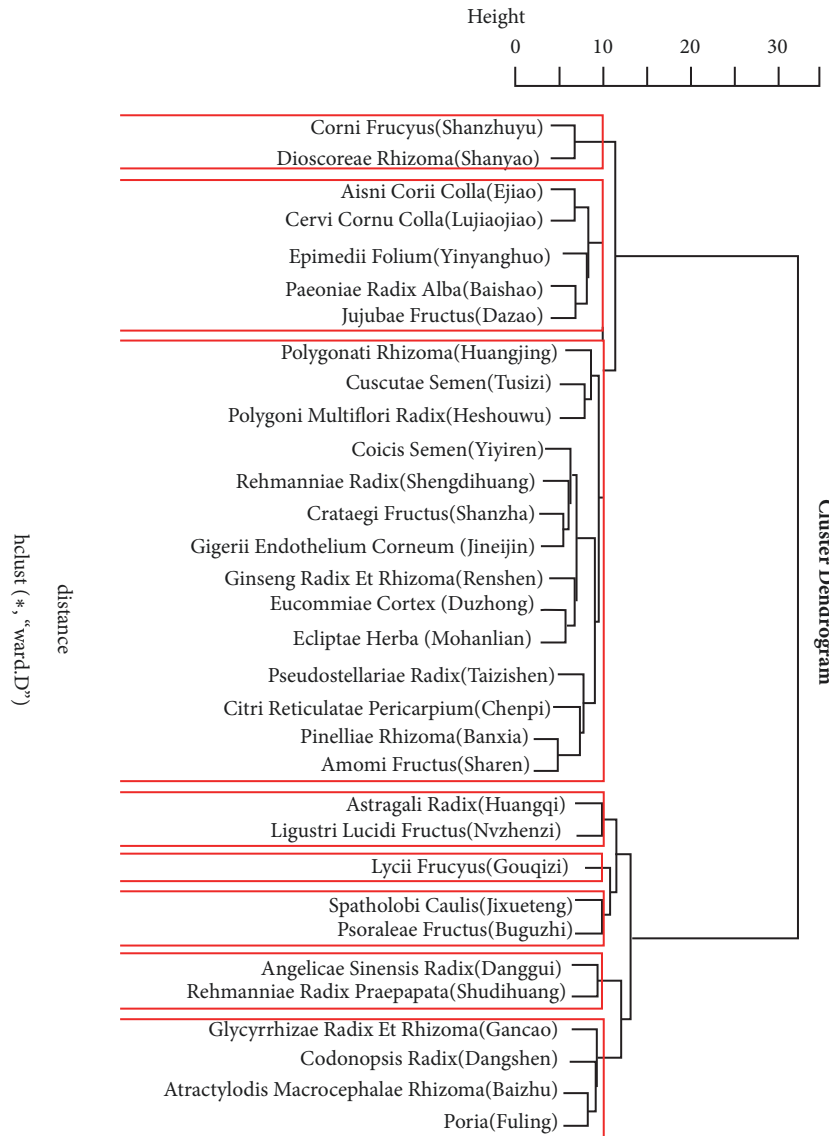


FIGURE 1: Cluster analysis tree diagram.

TABLE 2: Properties of herbs.

Property	Quantity	Categories (%)	Frequency of Occurrence in Formulae(%) <sup>*</sup>
warm	17	7 (53.85)	1085 (41.70)
mild	10	3 (23.08)	654 (25.13)
cold	3	2 (15.38)	76 (2.92)
cool	2	2 (15.38)	146 (5.61)

tip: <sup>\*</sup> a single Chinese herb may involve multiple properties, so it is repeated to count the herb quantity and frequency.

TABLE 3: Five flavors of herbs.

Flavors	Quantity	Categories (%)	Frequency of Occurrence in Formulae (%) <sup>*</sup>
sweet	26	5 (38.46)	169 (64.99)
bitter	9	3 (23.08)	620 (23.83)
pungent	7	4 (30.77)	395 (15.18)
sour	4	3 (23.08)	135 (4.42)
salty	1	1 (7.70)	30 (1.15)

tip: <sup>\*</sup> a single Chinese herb may involve multiple tastes, so it is repeated to count the herb quantity and frequency.

tonifying kidney are mainly sweet, bitter, and pungent, rather than salty which is the corresponding flavor of the kidney in Chinese medicine theory and is different from the general idea that herbs salt in flavor are mainly used

in kidney-reinforcing therapies and is more practical for clinical use [12]. The herbs enter spleen meridian topping the list, following the herbs to kidney and liver meridians.

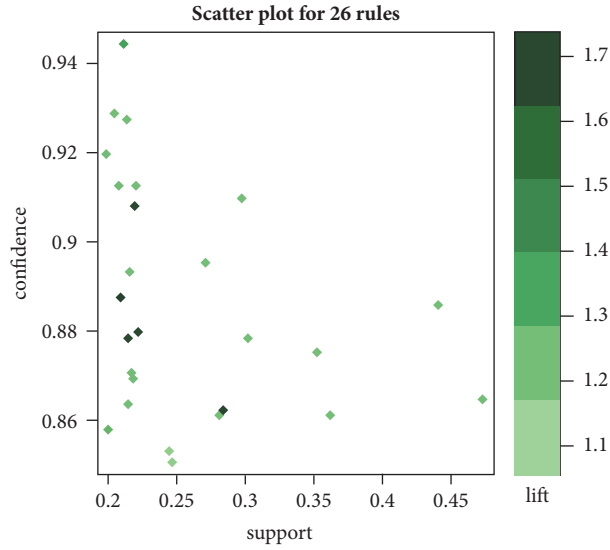


FIGURE 2: Association rule scatter plot.

TABLE 4: Meridian tropism of herbs.

Meridian Tropism	Quantity	Categories (%)	Frequency of Occurrence in Formulae (%)
spleen	20	6 (46.15)	1238 (47.58)
kidney	19	6 (46.15)	1092 (41.97)
liver	16	5 (38.46)	953 (36.63)
lung	12	4 (30.77)	774 (29.75)
heart	7	3 (23.08)	434 (16.68)
stomach	9	5 (38.46)	369 (14.18)
urinary bladder	1	1 (7.69)	18 (0.69)
small intestine	1	1 (7.69)	18 (0.69)

tip: a single Chinese herb may involve multiple meridian tropisms, so it is repeated to count the herb quantity and frequency.

And all the association rules contain qi-invigorating herbs of the deficiency-tonifying category, whose main function is replenishing spleen and invigorating qi, which shows that tonifying spleen and kidney in kidney-tonifying method is most commonly used in treating BMS. Chinese medicine believes that the spleen and stomach are the postnatal basis of human body, in which ingesting food transforms it into essence to the body. The kidney is the congenital foundation which stores the essence and is in charge of yin and yang generation and transformation. The congenital and acquired essence mutually assist each other, thus tonifying the spleen and kidney can achieve an indirect effect of kidney-tonifying. Compared to simply tonifying kidney, the method to tonifying both spleen and kidney provides a flexible way in Chinese medicine clinical prescription formulation and compatibility, and herbs in the cluster group 4 and 8 are referred in the method according to the database. The cluster group 4 consisted of qi-invigorating and spleen meridian entry herb *Astragalus Radix* (*Huangqi*) [13] and yin-nourishing and liver

and kidney meridian entry herb *Lucid Fructus* (*Nvzhenzi*) [14], with the effects of invigorating the spleen and kidney, tonifying qi and nourishing yin. The herbs in cluster group 8 are the main herbs in *Sijunzi* formula, a commonly used formula for clinical treatment of BMS in TCM. For example, Chen Jiaojiao et al. used the modified *Sijunzi* formula to treat BMS after lung cancer chemotherapy and achieved significant therapeutic effects [15]. (2) Tonifying the liver and kidney is another important treatment method for BMS in kidney-tonifying method. Both kidney and liver belong to the lower Jiao of human body, in which the kidney stores essence and liver stores blood, and the essence and blood mutually generate the counterpart; thus there is a saying in TCM that essence and blood are of the same source. Therefore, tonifying the liver and kidney can achieve the effect of tonifying the kidney directly compared to tonify the spleen and kidney. It can be seen from the clustering formulae that the formulae for tonifying liver and kidney can be divided into the general formulae for tonifying qi, blood, yin, and yang and the small formulae with less herbs and specific effects, from which we can see the two different perspectives of Chinese medicine in prescription of the kidney-tonifying method. One is applying the general formulae with various herbs of strong flavors to treat both the primary and secondary problems at one move, such as in cluster group 2 and cluster group 3 there are mainly deficiency-tonifying herbs which and tonify qi, blood, yin and yang. There are differences between the two. Cluster group 2 supplements without eliminating and is suitable for diseases of deficiency without pathogenic factor pattern, while in group 3, the deficiency-tonifying herbs are the basis and combined with herbs that eliminate pathogenic factors and promoting digestion and regulate qi to treat heat-toxin and phlegm-dampness and can be prescribed for patients whose symptom was defined as intermingled excess and deficiency. The second is based on the theory of yin and yang harmony. Kidney belongs to Shaoyin meridian, which is characterized as the governor of human body. It is believed

TABLE 5: Frequency of herb categories.

No.	Herb Category (quantity)	Frequency	Rate(%)	Cumulative Frequency(%)
1	deficiency-tonifying herbs (37)	1681	64.6	64.6
2	blood-activating and stasis-resolving herbs (6)	147	5.64	70.24
3	dampness-draining diuretic herbs (5)	139	5.34	75.58
4	digestant herbs (5)	78	3	78.58
5	heat-clearing herbs (5)	72	2.77	81.35
6	Astringent herbs (2)	66	2.54	83.89
7	qi-regulating herbs (2)	63	2.42	86.31
8	dampness-resolving medicina (2)	29	1.11	87.42
9	cough-suppressing and panting-calming herbs (1)	29	1.11	88.53
10	interior-warming herbs (2)	27	1.04	89.57
11	Exterior-releasing herbs (2)	13	0.5	90.07
12	Hemostatic herbs (1)	13	0.5	90.57
13	Nerve-soothing herbs (1)	5	0.19	90.76

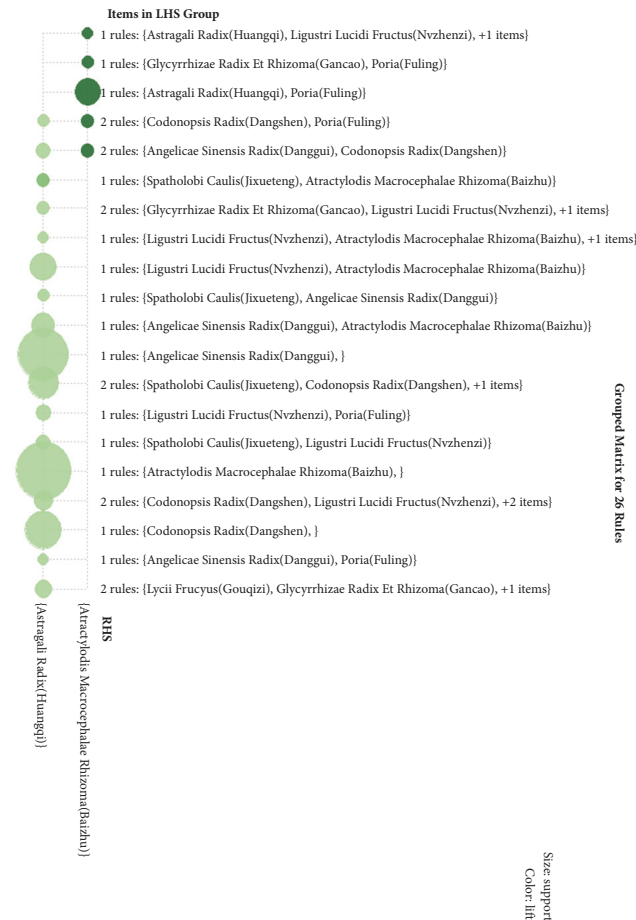


FIGURE 3: Association rule combination matrix.

that disease of this meridian could be treated by using less herbs in kinds and weight. For example, the cluster group 1 consisted of Corni Frucyus (Shanzhuyu) and Dioscoreae Rhizoma (Shanyao), with the functions of replenishing liver

and kidney, nourishing essence, and bone marrow. There is only one herb Lycii Frucyus (Gouqizi) in cluster group 5, which is a common food in China, and the glutinous polysaccharide (LBP) contained in it has a therapeutic effect on BMS [16, 17]; thus the herb itself can be regarded as kidney-tonifying herb and food.

4.2. The Application of Eliminating Methods, Including Dampness-Draining Method and Blood-Activating and Stasis-Removing Method. The top nine frequent herbs are all deficiency-tonifying herbs apart from Poria (Fuling), the dampness-draining diuretic herb and Spatholobi Caulis (Jixueteng), the blood-activating herb. Although the two herbs are not classified as deficiency-tonifying herbs, they are often used in combination with deficiency-tonifying herbs to prevent the stagnation caused by deficiency-tonifying herbs. A former study shows that alfalfa polysaccharides and their derivatives have the effects of anticancer, anti-inflammatory, antioxidant, and antiviral activity biological activities and are good for health [18]. In in vitro and in vivo zebrafish embryo angiogenesis studies, Spatholobus suberectus extract can improve the cytotoxicity and angiogenesis of human umbilical vein endothelial cells induced by VRI (tyrosine kinase inhibitor II) [19]. In the treatment of BMS by kidney-tonifying formulae, apart from the deficiency tonifying herbs, the top herbs include blood-activating and stasis-removing herbs, dampness-draining herbs, digestant herbs, heat-clearing herbs, astringent herbs, and qi-regulating herbs. The herbs categories involved in the herb pairs and suits under association rules are deficiency-tonifying herbs, dampness-draining diuretic herbs and blood-activating, and stasis-removing herbs. Therefore, it can be concluded that, in the process of treating BMS after radiotherapy and chemotherapy, the main therapeutic methods are the kidney-tonifying method combined with dampness-draining and blood-activating method and add up with digestant, qi-regulating, and heat-clearing herbs. It can be clear that when tonifying healthy qi, kidney-tonifying method also combines

TABLE 6: Association rules of herbs in BMS formulae.

No.	Herbal Suits	Support (%)	Confidence (%)	Lift
1	{Atractylodis Macrocephalae Rhizoma(Baizhu)} => {Astragali Radix(Huangqi)}	47.06	86.82	1.12
2	{Angelicae Sinensis Radix(Danggui)} => {Astragali Radix(Huangqi)}	44.54	88.33	1.16
3	{Codonopsis Radix (Dangshen)} => {Astragali Radix(Huangqi)}	36.13	86	1.13
4	{Spatholobi Caulis(Jixueteng)} => {Astragali Radix(Huangqi)}	35.29	87.5	1.14
5	{Atractylodis Macrocephalae Rhizoma(Baizhu), Ligustri Lucidi Fructus(Nvzhenzi)} => {Astragali Radix(Huangqi)}	29.83	91.03	1.19
6	{Atractylodis Macrocephalae Rhizoma(Baizhu), Codonopsis Radix (Dangshen)} => {Astragali Radix(Huangqi)}	29.41	87.5	1.14
7	{Atractylodis Macrocephalae Rhizoma(Baizhu), Poria(Fuling)} => {Astragali Radix(Huangqi)}	29	86.25	1.13
8	{Poria(Fuling), Astragali Radix(Huangqi)} => {Atractylodis Macrocephalae Rhizoma(Baizhu)}	28.99	86.25	1.59
9	{Atractylodis Macrocephalae Rhizoma(Baizhu), Angelicae Sinensis Radix(Danggui)} => {Astragali Radix(Huangqi)}	27.73	89.19	1.17
10	{Atractylodis Macrocephalae Rhizoma(Baizhu), Glycyrrhizae Radix Et Rhizoma(Gancao)} => {Astragali Radix(Huangqi)}	23.95	85.07	1.11
11	{Atractylodis Macrocephalae Rhizoma(Baizhu), Lycii Frucus(Gouqizi)} => {Astragali Radix(Huangqi)}	23.95	85.07	1.11
12	{Poria(Fuling), Ligustri Lucidi Fructus(Nvzhenzi)} => {Astragali Radix(Huangqi)}	22.69	87.1	1.14
13	{Spatholobi Caulis(Jixueteng), Ligustri Lucidi Fructus(Nvzhenzi)} => {Astragali Radix(Huangqi)}	22.29	86.88	1.14
14	{Angelicae Sinensis Radix(Danggui), Codonopsis Radix (Dangshen)} => {Astragali Radix(Huangqi)}	22.27	91.38	1.19
15	{Atractylodis Macrocephalae Rhizoma(Baizhu), Spatholobi Caulis(Jixueteng)} => {Astragali Radix(Huangqi)}	21.43	94.44	1.24
16	{Codonopsis Radix (Dangshen), Poria(Fuling)} => {Atractylodis Macrocephalae Rhizoma(Baizhu)}	21.43	91.07	1.68
17	{Angelicae Sinensis Radix(Danggui), Codonopsis Radix (Dangshen)} => {Atractylodis Macrocephalae Rhizoma(Baizhu)}	21.43	87.93	1.62
18	{Angelicae Sinensis Radix(Danggui), Ligustri Lucidi Fructus(Nvzhenzi)} => {Astragali Radix(Huangqi)}	21.43	92.72	1.21
19	{Angelicae Sinensis Radix(Danggui), Spatholobi Caulis(Jixueteng)} => {Astragali Radix(Huangqi)}	21.01	90.91	1.19
20	{Poria(Fuling), Glycyrrhizae Radix Et Rhizoma(Gancao)} => {Atractylodis Macrocephalae Rhizoma(Baizhu)}	21.01	87.72	1.62
21	{Glycyrrhizae Radix Et Rhizoma(Gancao), Ligustri Lucidi Fructus(Nvzhenzi)} => {Astragali Radix(Huangqi)}	21.01	92.59	1.21
22	{Codonopsis Radix (Dangshen), Poria(Fuling)} => {Astragali Radix(Huangqi)}	21.01	89.29	1.17
23	{Codonopsis Radix (Dangshen), Ligustri Lucidi Fructus(Nvzhenzi)} => {Astragali Radix(Huangqi)}	21.01	86.21	1.13
24	{Angelicae Sinensis Radix(Danggui), Poria(Fuling)} => {Astragali Radix(Huangqi)}	20.17	85.71	1.12
25	{Atractylodis Macrocephalae Rhizoma(Baizhu), Poria(Fuling), Ligustri Lucidi Fructus(Nvzhenzi)} => {Astragali Radix(Huangqi)}	20.17	92.31	1.21
26	{Poria(Fuling), Astragali Radix(Huangqi), Ligustri Lucidi Fructus(Nvzhenzi)} => {Atractylodis Macrocephalae Rhizoma(Baizhu)}	20.17	88.89	1.64

with eliminating herbs to expel pathogenic factors, which conforms to relative clinical reports [20]. The reinforcing and reducing method in TCM are mutual benefiting and corresponds to the law of unity and opposition of yin and yang, it works to achieve the effect of tonifying and eliminating, and reflects the therapeutic principles of strengthening healthy qi and eliminating pathogenic factors.

## 5. Conclusions

According to the relevant techniques and theories of data mining and the analysis of medication rules of applying kidney-tonifying method in treating BMS after chemoradiotherapy, it is revealed that this kind of treatment is based on the method of strengthening spleen and tonifying kidney,

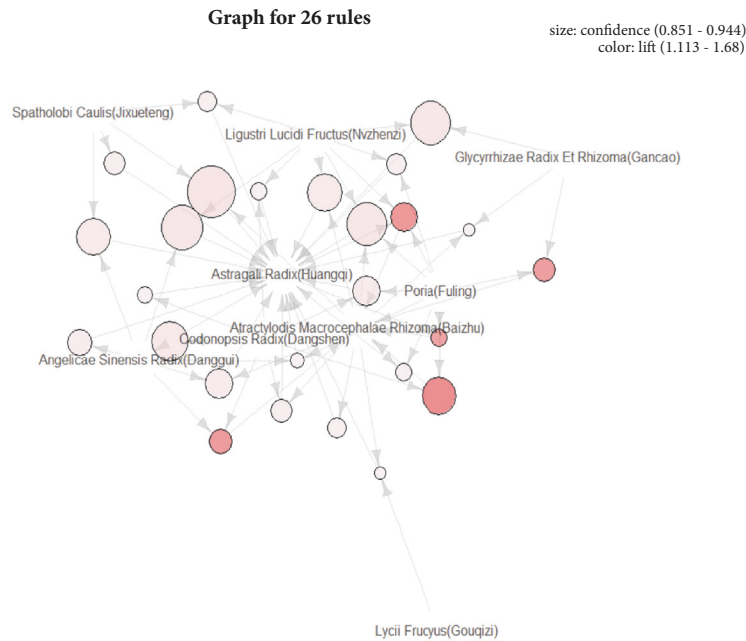


FIGURE 4: Association rule diagram.

replenishing liver and kidney and combined with invigorating healthy qi, and also applied methods include dampness-draining and blood-activating to eliminate pathogenic factors. With the help of data mining techniques and theories, this study has summarized the medication rules of kidney-tonifying method in treating BMS after radiotherapy and chemotherapy, which can facilitate TCM diagnosis, treatment, and experimental research, and would be helpful for BMS patients.

### Conflicts of Interest

The authors declare that there are no conflicts of interest regarding the publication of this article.

### Authors' Contributions

Xing You and Yinkun Xu contributed equally to this study.

### Acknowledgments

This work was supported by the training project of Top-Notch Creative Talents of GZUCM (BKBJCX2018001), the Innovation and Entrepreneurship Training Program for College Students of GZUCM (201810572002), GZUCM Science Fund for Creative Research Groups (2016KYTD10), and GZUCM Torch Program (A1-AFD015142Z08) to Jin Zhang. The authors are sincerely grateful for all the help provided by the members of Beijing University of Chinese Medicine (Tingyao Hu) and Guangzhou University of Chinese Medicine (Yuzhuo Zhang, Jiayi Chen, Lin Huang, Guangyao Li, Shichao Xu, Zhicun Zhang, Yifang Wang, Ziyuan Li, Jiacheng Zhong, Jiaqian Huang and Xin He) and Jiangxi University of Traditional Chinese Medicine (Yun Xiao, Yue Zhu, Dinghua Zhang, Jian Zhang).

### References

- [1] Z. Wenchao, L. Jiawei, L. Ran et al., "Efficacy and safety of iodine-125 radioactive seeds brachytherapy for advanced non-small cell lung cancer-A meta-analysis," *Brachytherapy*, vol. 17, no. 2, pp. 439–448, 2018.
- [2] M. Ohira, N. Kubo, Y. Yamashita et al., "Impact of chemoradiation-induced myelosuppression on prognosis of patients with locally advanced esophageal cancer after chemoradiotherapy followed by esophagectomy," *Anticancer Research*, vol. 35, no. 9, pp. 4889–4896, 2015.
- [3] X. Min, *Clinical observation of Zhizhi Zhenyuan Capsule in the Treatment of Bone Marrow Suppression after Chemotherapy in Non-Small Cell Lung Cancer*, Guangzhou University of Chinese Medicine, Guangzhou, China, 2008.
- [4] B. Hou, R. Liu, Z. Qin, D. Luo, Q. Wang, and S. Huang, "Oral chinese herbal medicine as an adjuvant treatment for chemotherapy, or radiotherapy, induced myelosuppression: A systematic review and meta-analysis of randomized controlled trials," *Evidence-Based Complementary and Alternative Medicine*, vol. 2017, Article ID 3432750, 13 pages, 2017.
- [5] X. Guanglei, *Research on Data Mining Technology in the Inheritance of Famous Traditional Chinese Medicine Experience*, Nanjing University of Science and Technology, Nanjing, China, 2008.
- [6] L. E. Friberg, M. Sandström, and M. O. Karlsson, "Scaling the time-course of myelosuppression from rats to patients with a semi-physiological model," *Investigational New Drugs*, vol. 28, no. 6, pp. 744–753, 2010.
- [7] National Pharmacopoeia Commission, *Pharmacopoeia of the People's Republic of China*, China Medical Science and Technology Press, 2015 edition, 2010.
- [8] Nanjing University of Chinese Medicine, *Dictionary of Traditional Chinese Medicine*, Shanghai Science and Technology Press, 2006.



- [9] V. M. Youroukova, D. G. Dimitrova, A. D. Valerieva et al., "Phenotypes determined by cluster analysis in moderate to severe bronchial asthma," *Folia Medica*, vol. 59, no. 2, pp. 165–173, 2017.
- [10] S. Mateen and B. Joseph, "Testing genotypes-phenotype relationships using permutation tests on association rules," *Statistical Applications in Genetics and Molecular Biology*, vol. 14, no. 1, pp. 83–92, 2015.
- [11] X. Wei and C. Huange, *SPSS Modeler Data Mining Method and Application*, Electronic Industry Press, 2014.
- [12] L. Shuchun, L. Yang, Z. Xiaowei et al., "Excavation analysis of traditional Chinese medicine for tonifying kidney and its compatibility based on prescription data," *Chinese Journal of Experimental Formulaology*, vol. 21, no. 20, pp. 208–212, 2015.
- [13] Z. M. Ismail, N. M. Amin, M. F. Yacoub et al., "Myelo-enhancement by astragalus membranaceus in male albino rats with chemotherapy myelo-suppression. Histological and immunohistochemical study," *International Journal of Stem Cells*, vol. 7, no. 1, pp. 12–22, 2014.
- [14] Q. Li, Y.-S. Fan, Z.-Q. Gao, K. Fan, and Z.-J. Liu, "Effect of Fructus Ligustri Lucidi on osteoblastic like cell-line MC3T3-E1," *Journal of Ethnopharmacology*, vol. 170, pp. 88–95, 2015.
- [15] C. Jiaojiao, H. Lingjing, Z. Guobiao et al., "Mechanism of the application of Sijunzi Decoction on bone marrow suppression of lung cancer chemotherapy," *Journal of Experimental Traditional Medical Formulae*, vol. 24, no. 2, pp. 180–185, 2018.
- [16] H. Gong, P. Shen, L. Jin et al., "Therapeutic effects of Lycium barbarum polysaccharide (LBP) on irradiation or chemotherapy-induced myelosuppressive mice," *Chinese Journal of Information on Tcm*, vol. 20, no. 2, pp. 155–162, 2005.
- [17] G. Haiyang, S. Ping, J. I. Li et al., "Therapeutic effects of Lycium barbarum polysaccharide (LBP) on mitomycin C (MMC)-induced myelosuppressive mice," *Journal of Experimental Therapeutics & Oncology*, vol. 4, no. 3, pp. 181–187, 2004.
- [18] Y. Sun, "Biological activities and potential health benefits of polysaccharides from *Poria cocos* and their derivatives," *International Journal of Biological Macromolecules*, vol. 68, pp. 131–134, 2014.
- [19] Z.-Y. Zhou, L.-Y. Huan, W.-R. Zhao, N. Tang, Y. Jin, and J.-Y. Tang, "Spatholobi Caulis extracts promote angiogenesis in HUVECs in vitro and in zebrafish embryos in vivo via up-regulation of VEGFRs," *Journal of Ethnopharmacology*, vol. 200, pp. 74–83, 2017.
- [20] S. Jing and D. Haibin, "Research progress in the treatment of bone marrow suppression after chemotherapy with traditional Chinese medicine therapy," *Contemporary Medicine*, vol. 36, no. 32, pp. 41–44, 2018.



Hindawi

Submit your manuscripts at  
[www.hindawi.com](http://www.hindawi.com)

