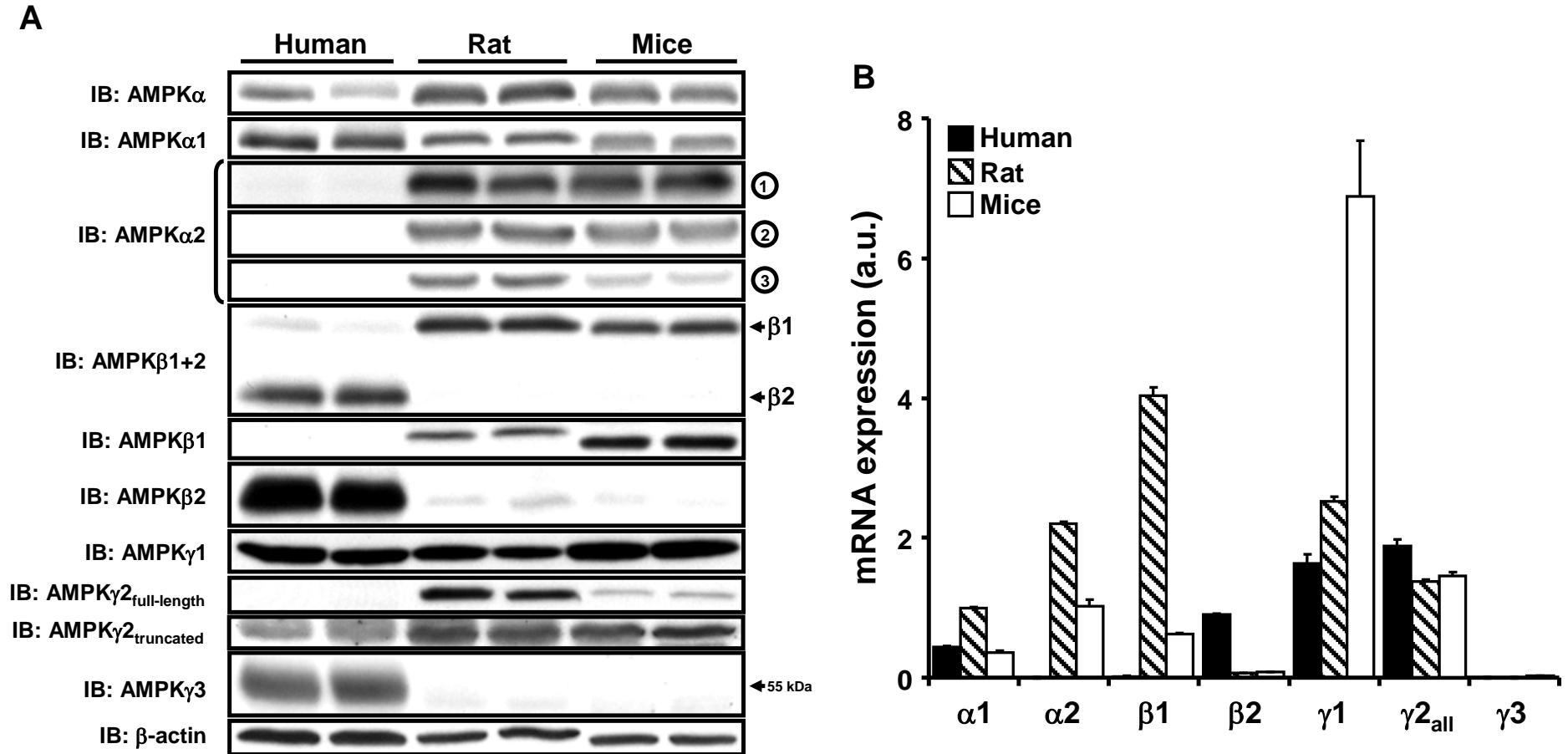


ESM Figure 1



Supplementary Figure 1: Proteins and mRNA gene expression of AMPK subunits in human, rat and mouse whole livers. Proteins (A) and mRNA gene expression (B) were determined in whole livers from human (black bars), rat (hatched bars) or mouse (open bars) by western blot and RT-qPCR, respectively. Western blot analysis is representative of 2 separate experiments. The results from RT-qPCR were corrected for *Gapdh* and expressed as means \pm SEM (n=3).