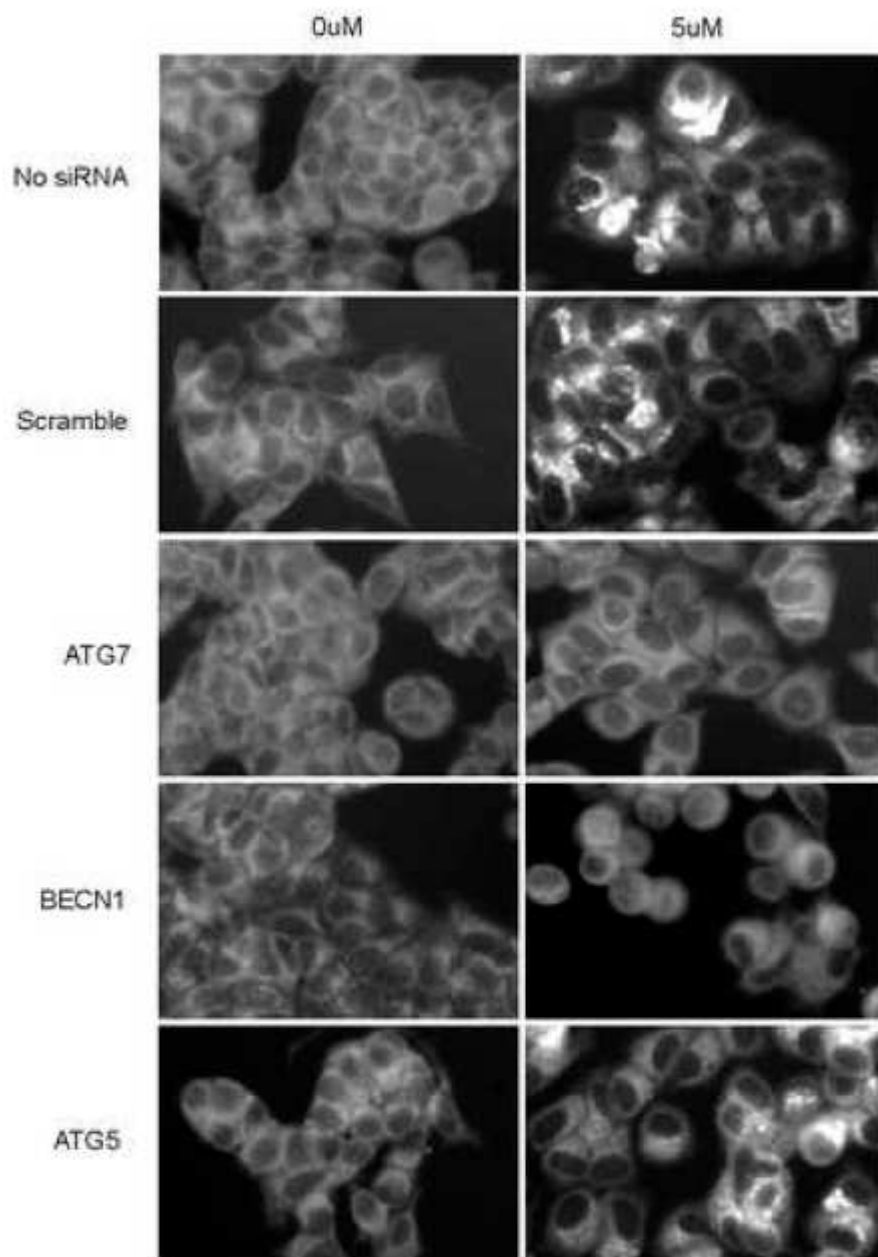
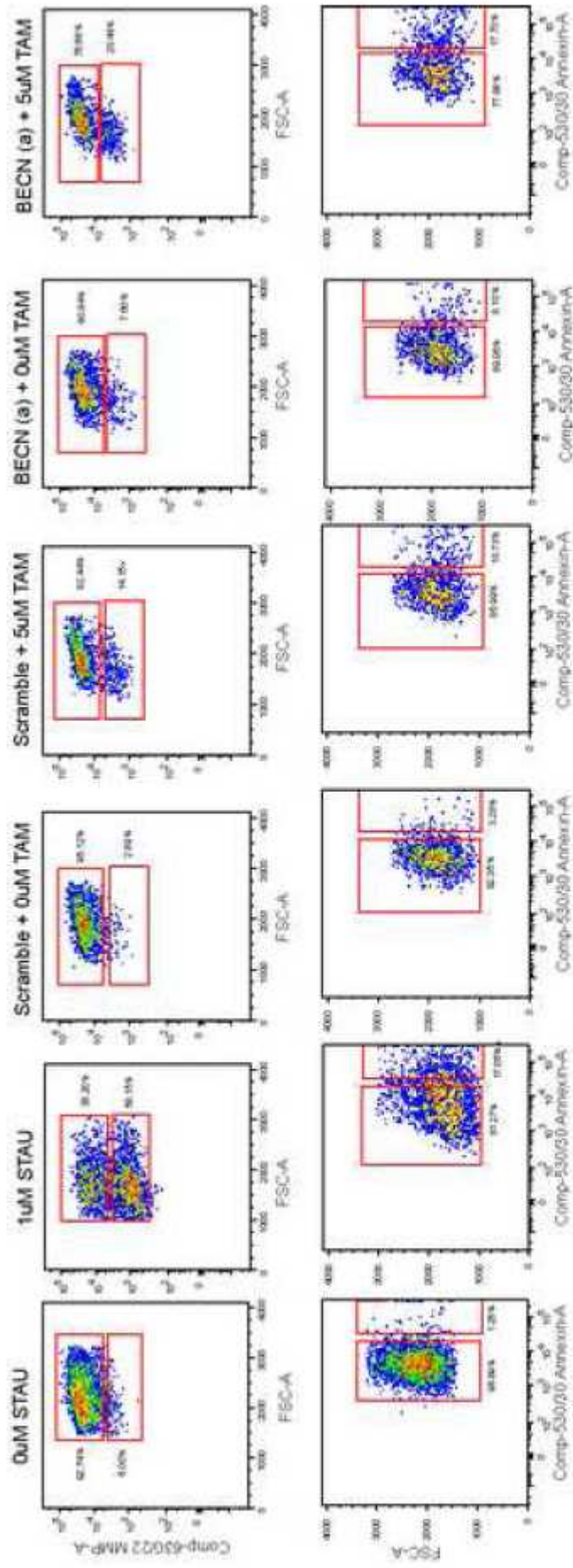


Supplementary Figure 1. Representative bright field images of MCF7 cells in the absence (0 uMTAM) or presence (5 uMTAM) of tamoxifen and the indicated siRNAs (day3).



Supplementary Figure 2. Representative images of MDC-stained MCF7 cells in the absence (0 uM TAM) or presence (5 uM TAM) of tamoxifen and the indicated siRNAs (day 3).



Supplementary Figure 3. Scatter plots for flow cytometry analysis of mitochondrial membrane potential (MMP) (top panel; Y axis) and Annexin-V (bottom panel; X axis) staining of MCF7 cells. Gates used to distinguish MMP positive/negative and Annexin-V positive/negative cells are shown in red, and the percentage of cells in each gate is indicated. STAU = staurosporine control; other samples shown correspond to the indicated siRNAs in the absence (0uM TAM) or presence (5uM TAM) of tamoxifen.