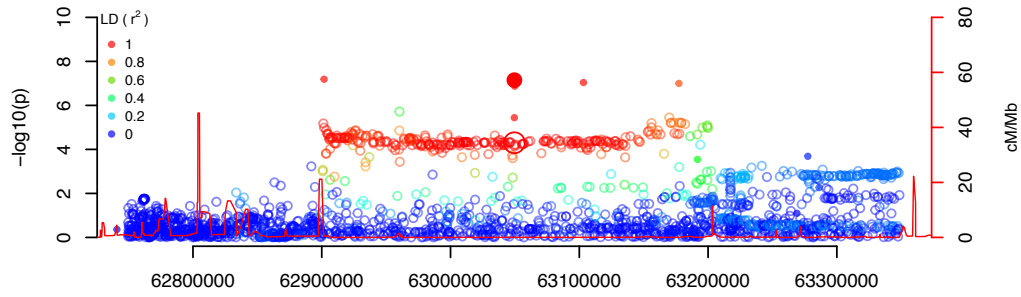


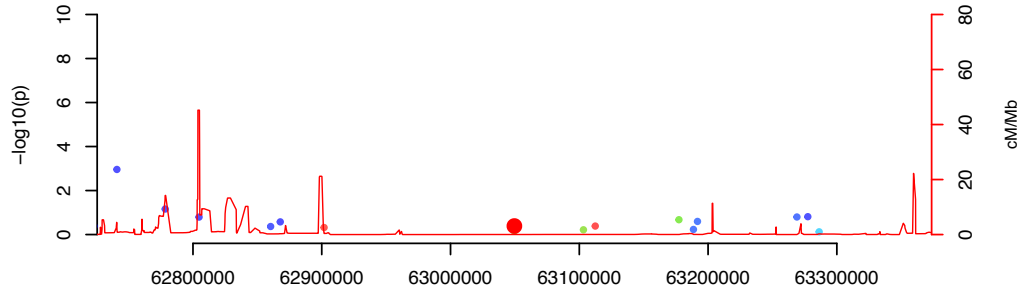
**Supplementary Figure 7.** Regional association plots of novel risk loci.

At each locus, the phenotype with the largest MANTRA  $\log_{10}BF$  is represented. The first four panels represent the per-population association signals. In Europeans, this consisted of a GWAS + ImmunoChip meta-analysis, while non-Europeans include only ImmunoChip samples. In the European panel, when an associated locus does not reside in an ImmunoChip high density region, association results from just the GWAS are plotted as hollow circles. The lead SNP in each region is represented by the large red circle. LD ( $r^2$ ) values relative to the lead SNP were estimated directly from the controls in each population separately. The fifth panel represents the MANTRA meta-analysis results. Recombination rates were obtained from the International HapMap Project Phase II. Gene positions were obtained from GENCODE Release 19.

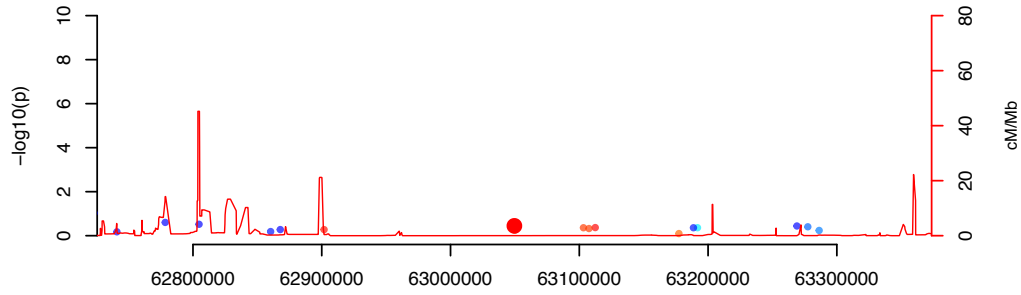
EUR: rs1748195 CD



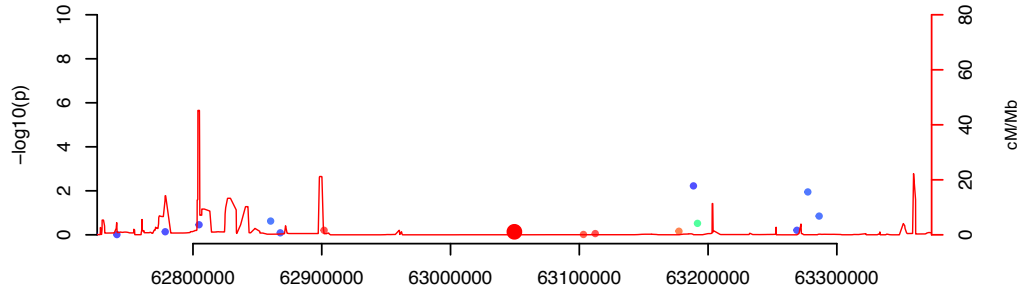
EAS: rs1748195 CD



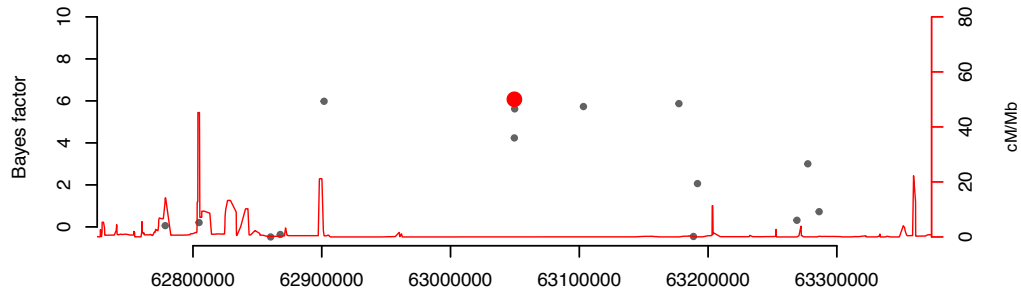
IND: rs1748195 CD



IRA: rs1748195 CD



MANTRA meta-analysis: rs1748195 CD



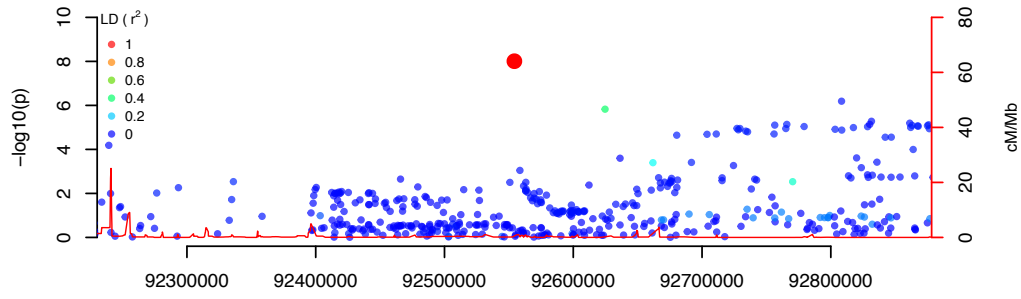
||||| KANK4

||||| USP1

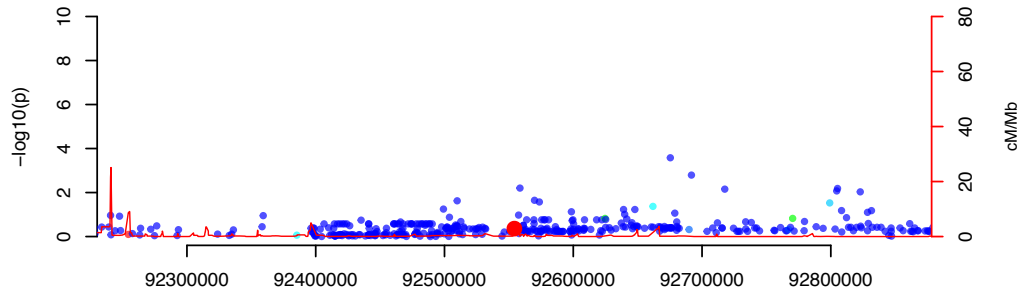
||| ANGPTL3  
| AL138847.1  
| DOCK7

||| ATG4C

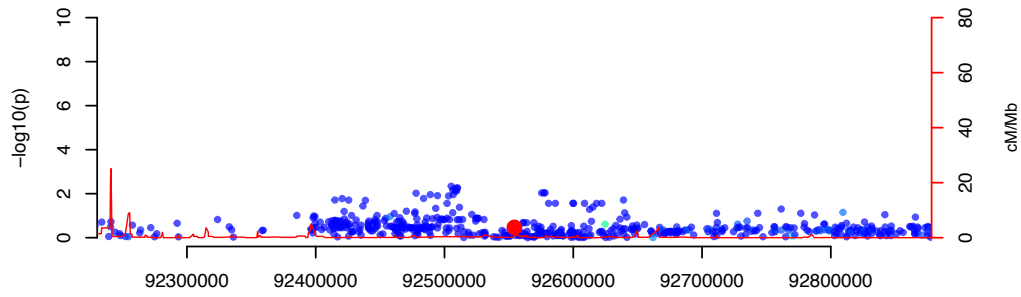
EUR: rs34856868 IBD



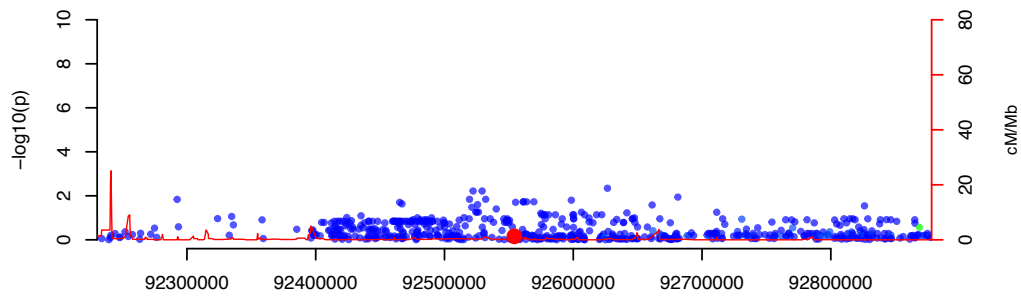
EAS: rs34856868 IBD



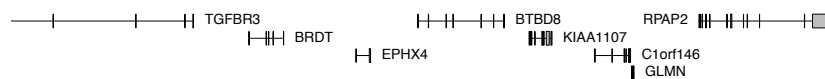
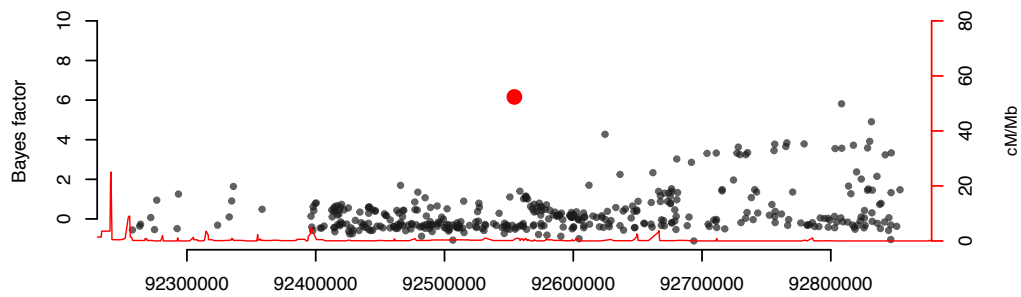
IND: rs34856868 IBD



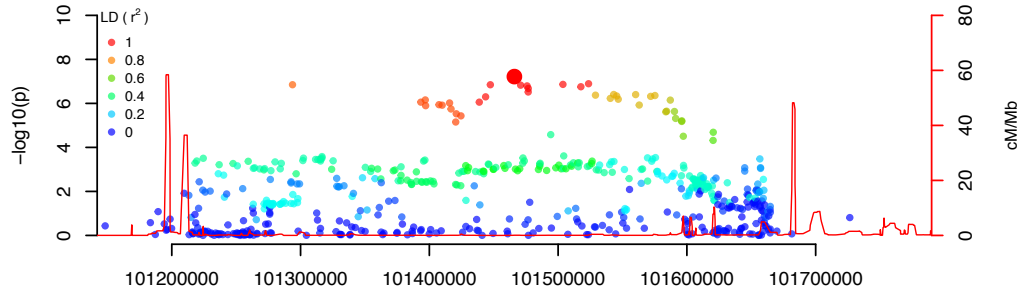
IRA: rs34856868 IBD



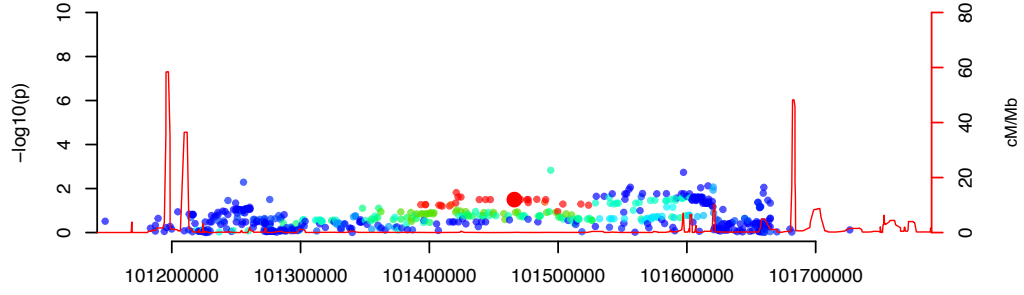
MANTRA meta-analysis: rs34856868 IBD



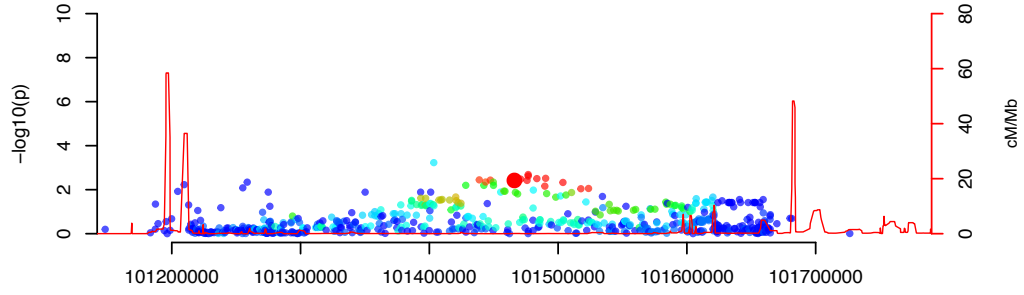
EUR: rs11583043 UC



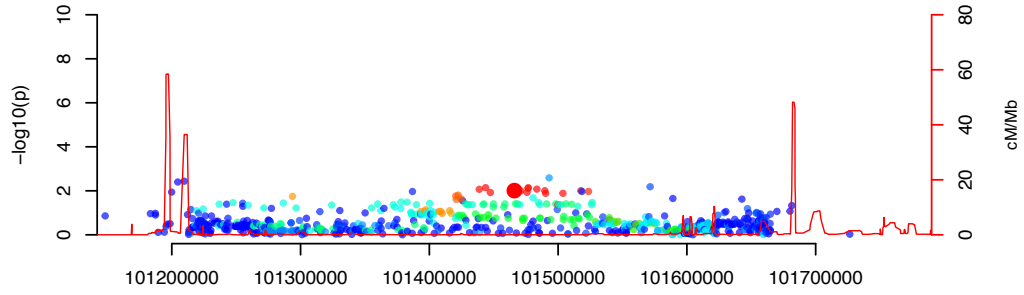
EAS: rs11583043 UC



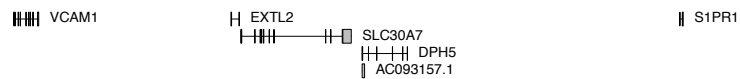
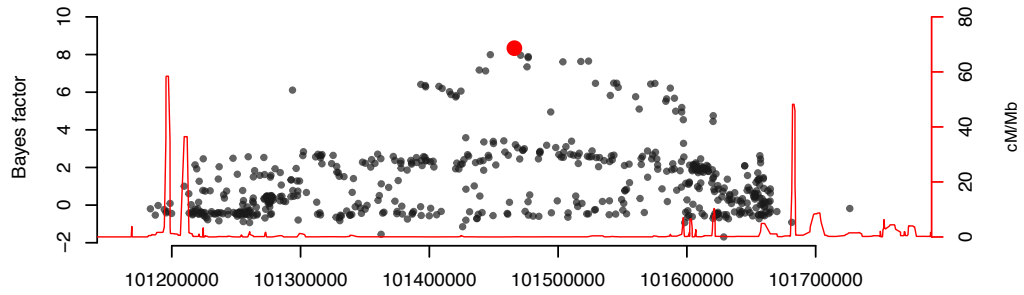
IND: rs11583043 UC



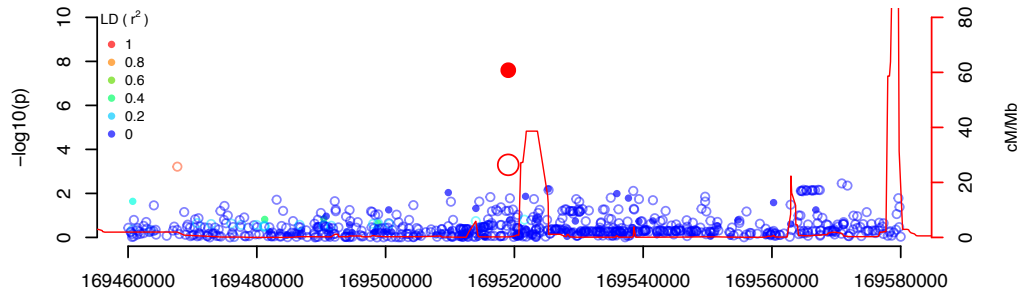
IRA: rs11583043 UC



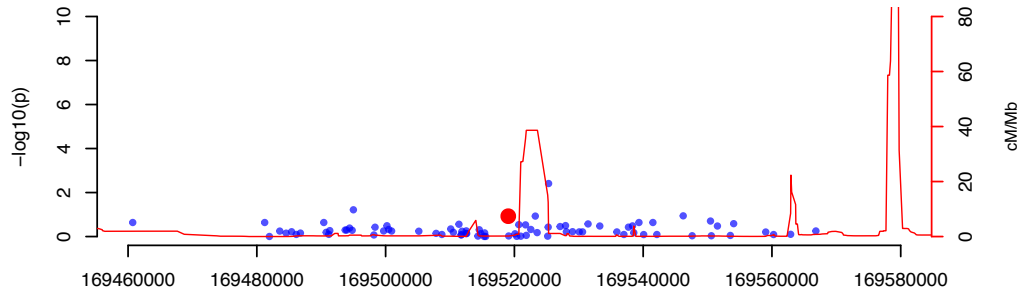
MANTRA meta-analysis: rs11583043 UC



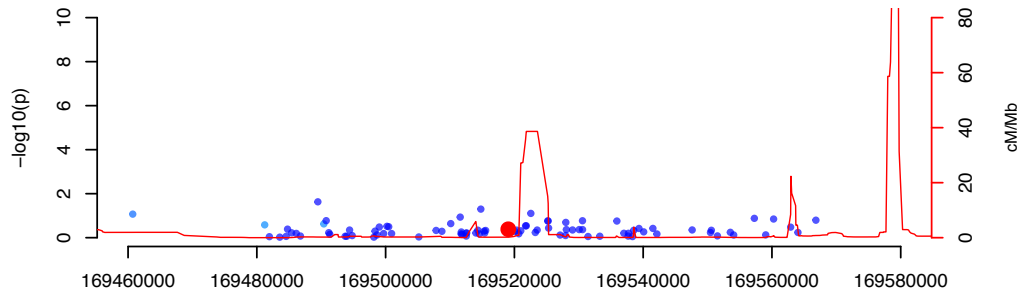
EUR: rs6025 IBD



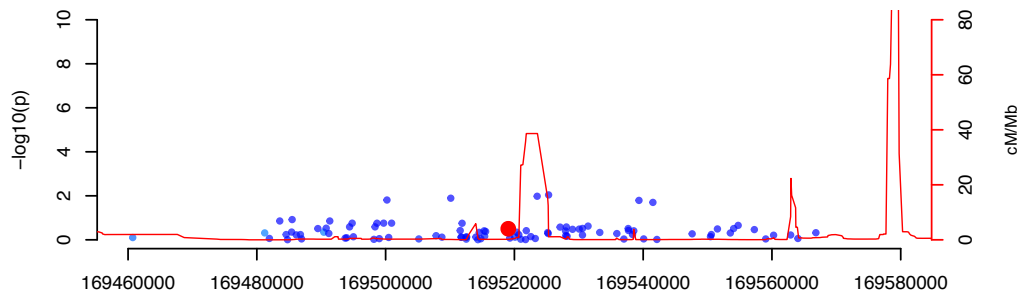
EAS: rs6025 IBD



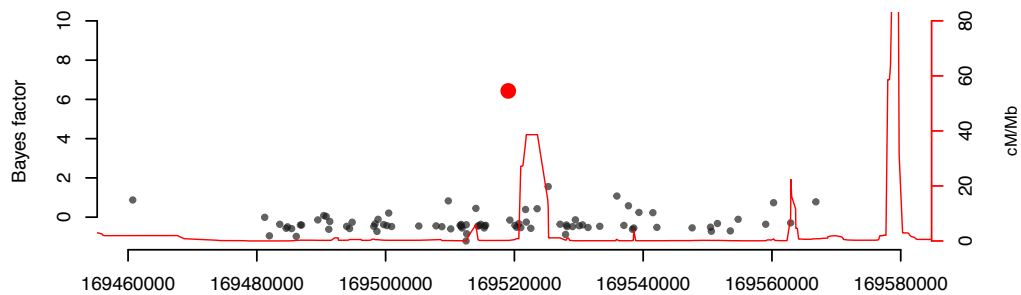
IND: rs6025 IBD



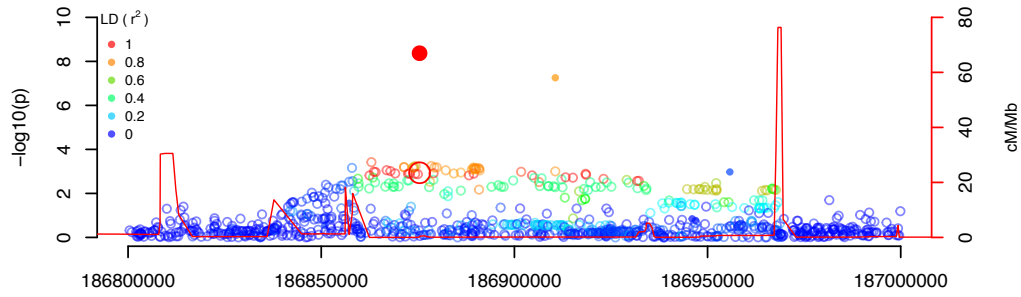
IRA: rs6025 IBD



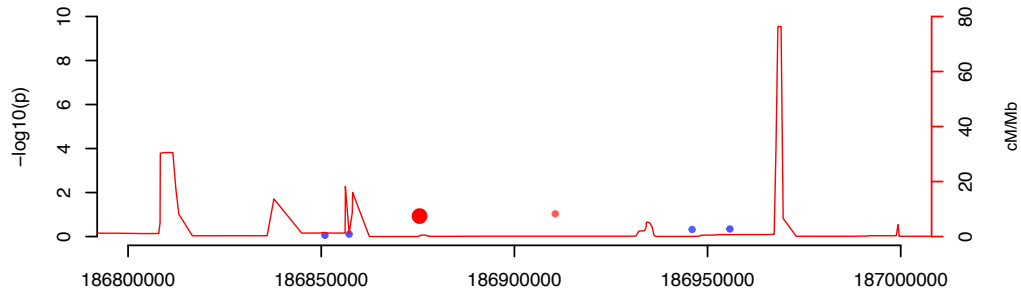
MANTRA meta-analysis: rs6025 IBD



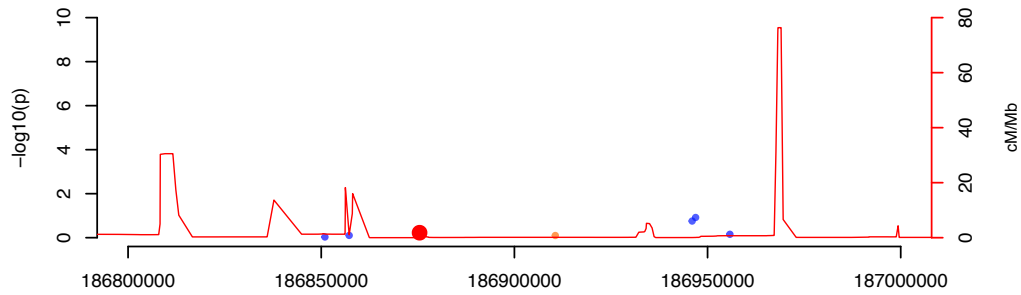
EUR: rs10798069 CD



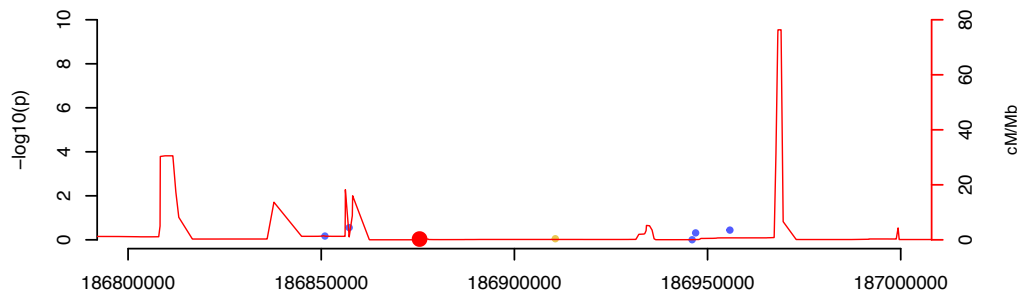
EAS: rs10798069 CD



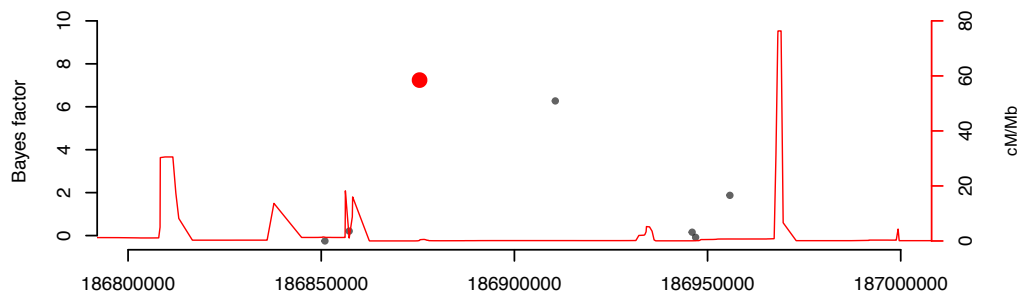
IND: rs10798069 CD



IRA: rs10798069 CD

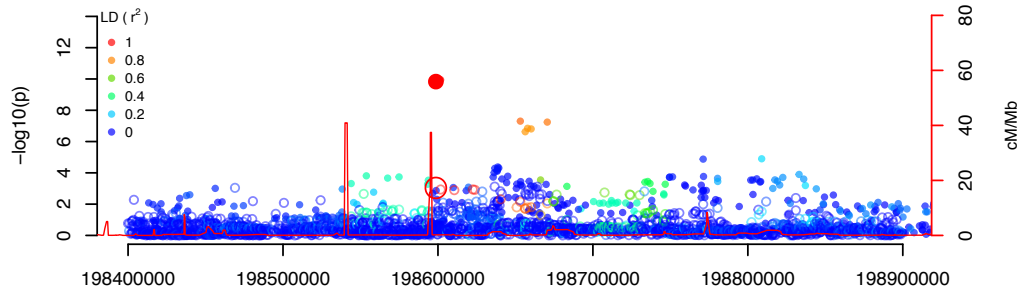


MANTRA meta-analysis: rs10798069 CD

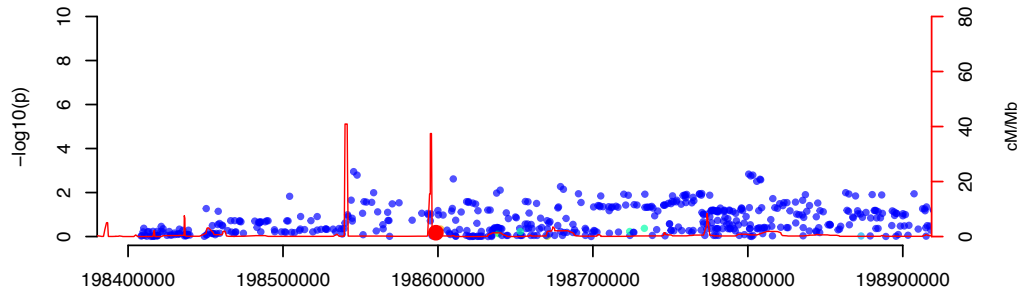


PLA2G4A

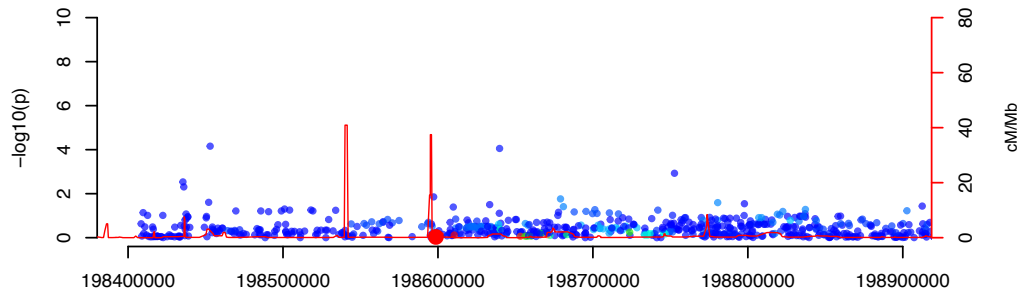
EUR: rs7555082 CD



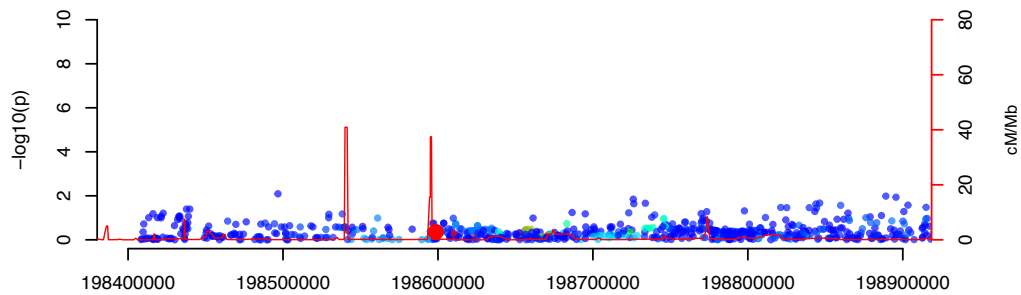
EAS: rs7555082 CD



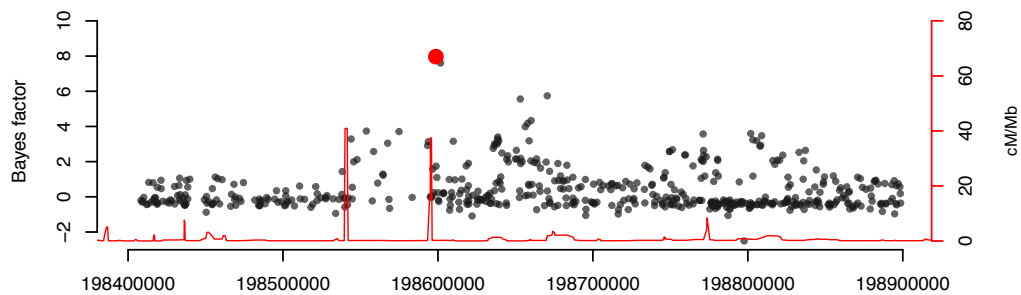
IND: rs7555082 CD



IRA: rs7555082 CD

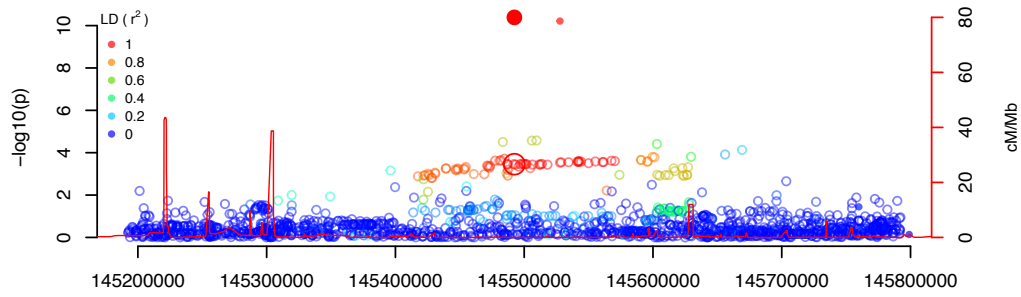


MANTRA meta-analysis: rs7555082 CD

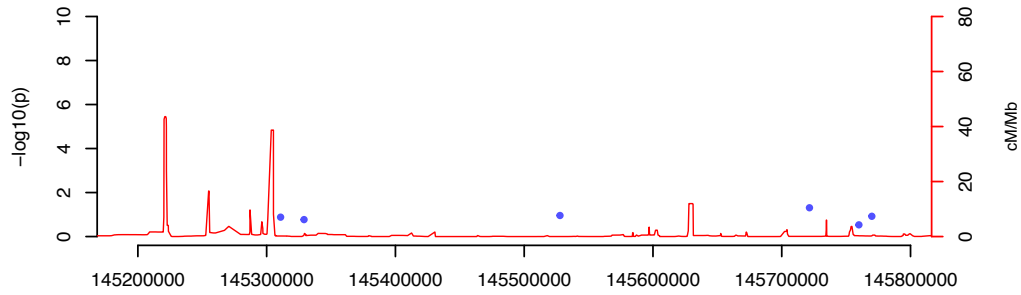


||| ATP6V1G3 |-----| PTPRC

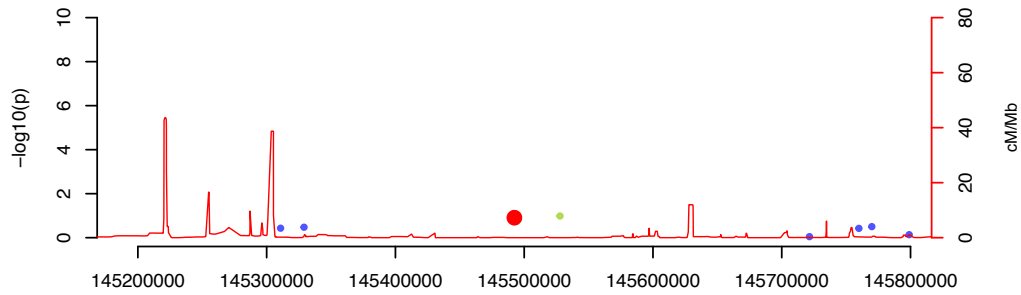
EUR: rs11681525 CD



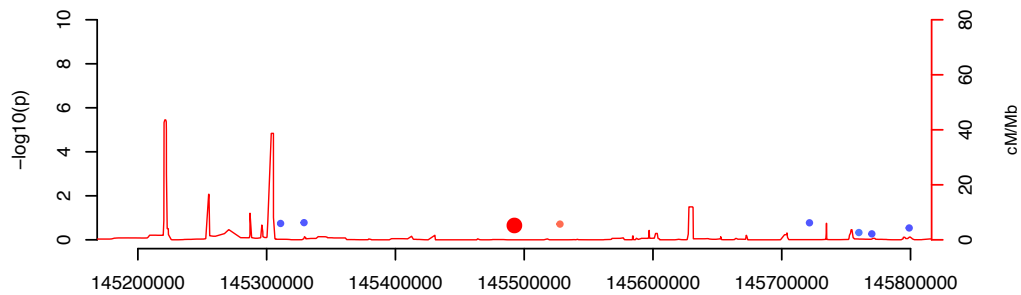
EAS: rs11681525 CD



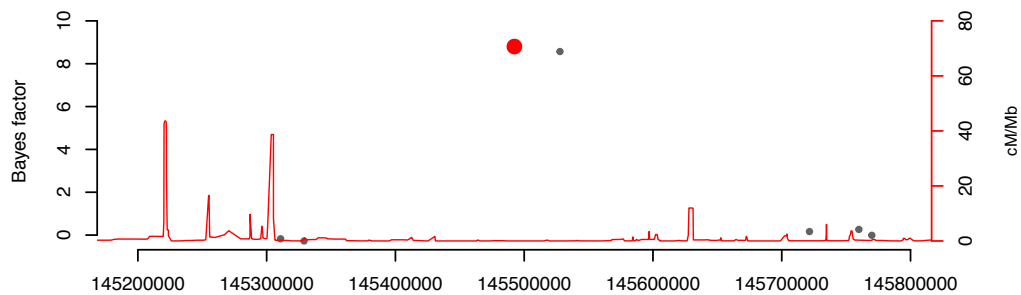
IND: rs11681525 CD



IRA: rs11681525 CD



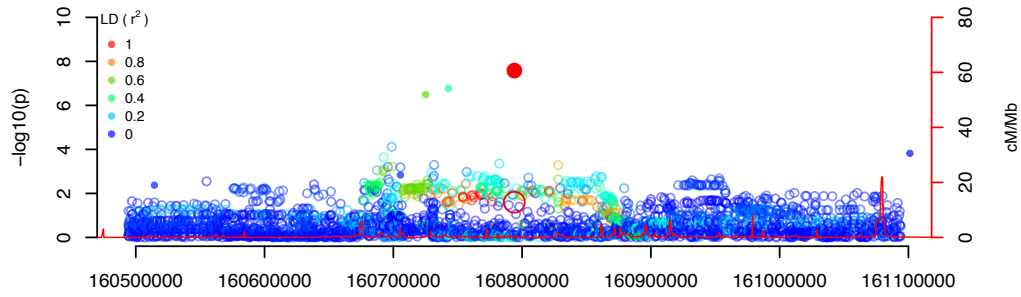
MANTRA meta-analysis: rs11681525 CD



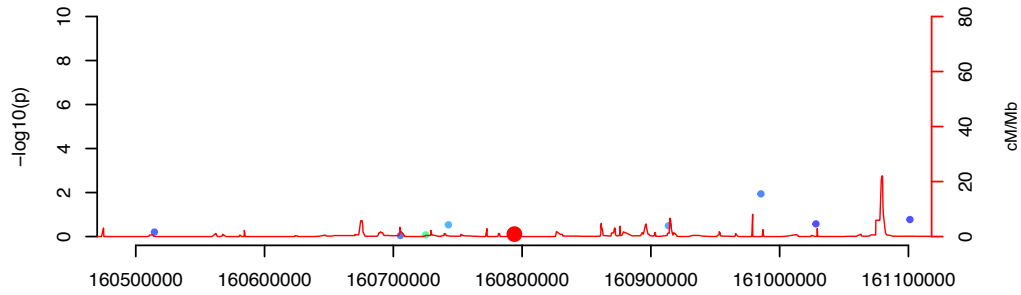
ZEB2



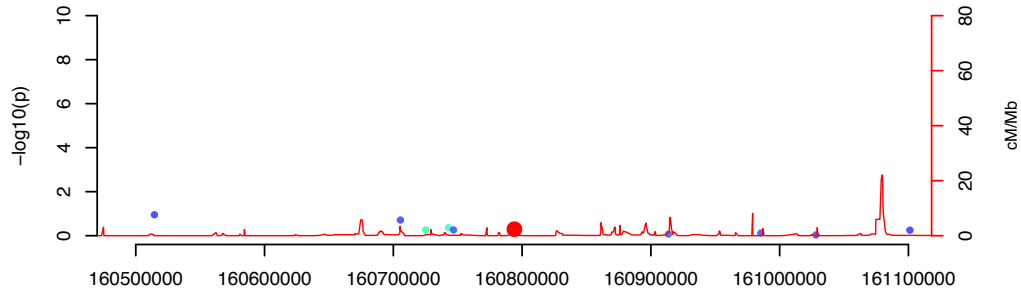
EUR: rs4664304 IBD



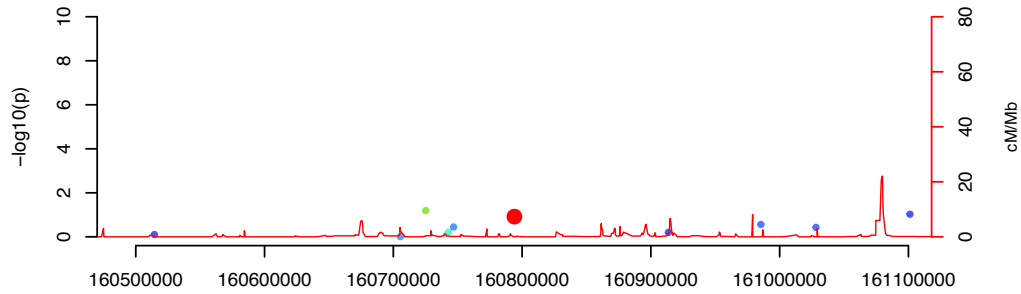
EAS: rs4664304 IBD



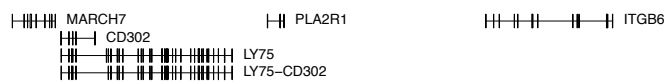
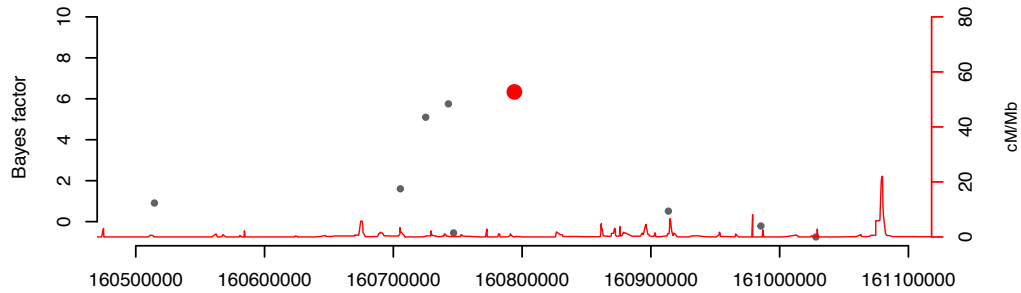
IND: rs4664304 IBD



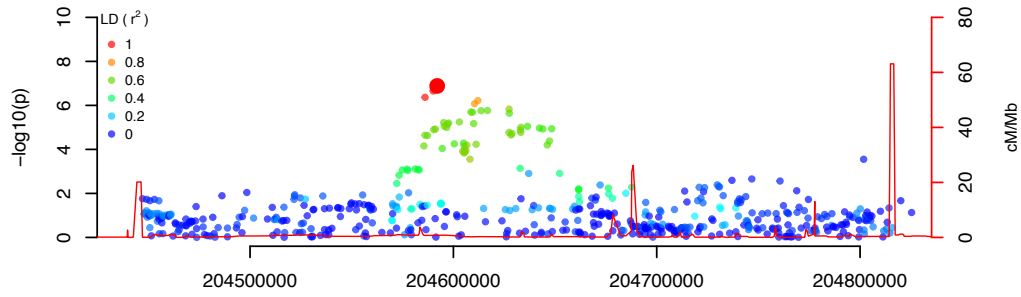
IRA: rs4664304 IBD



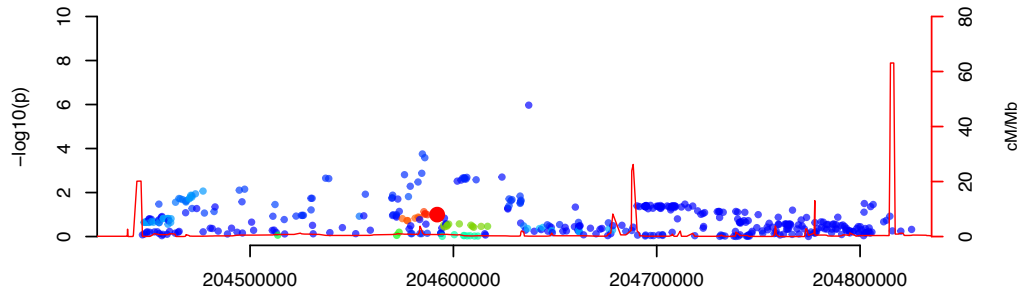
MANTRA meta-analysis: rs4664304 IBD



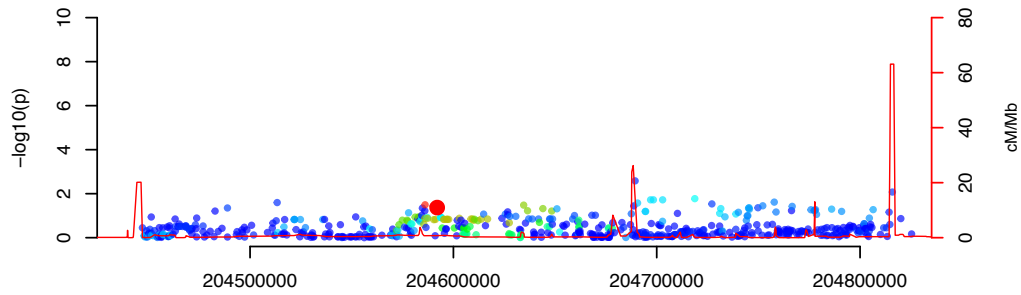
EUR: rs3116494 UC



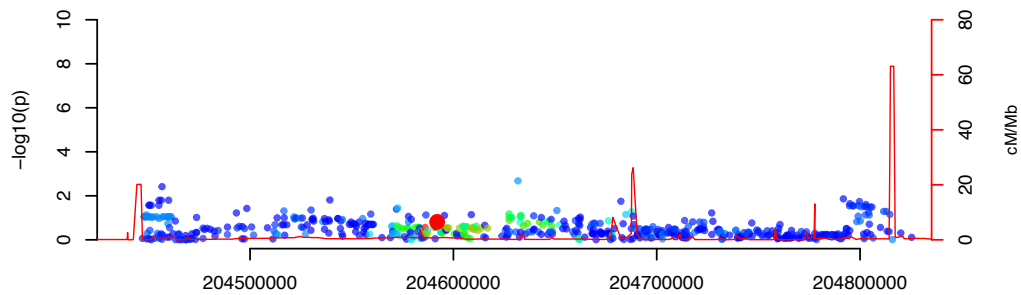
EAS: rs3116494 UC



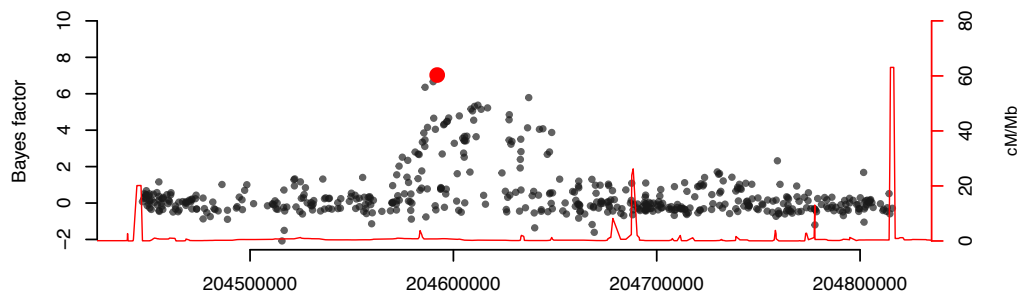
IND: rs3116494 UC



IRA: rs3116494 UC



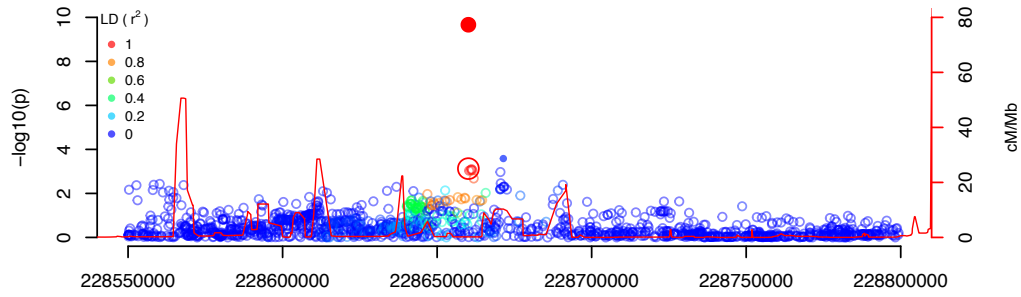
MANTRA meta-analysis: rs3116494 UC



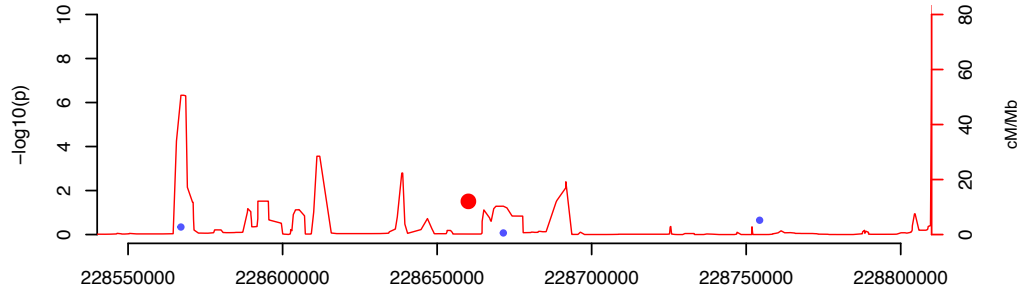
CD28

CTLA4 ICOS

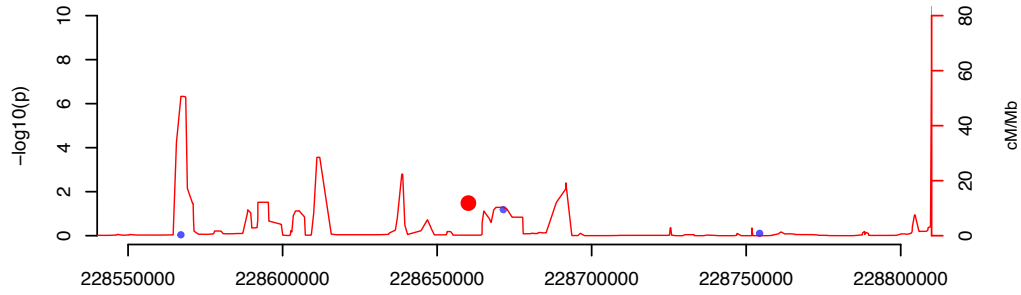
EUR: rs111781203 IBD



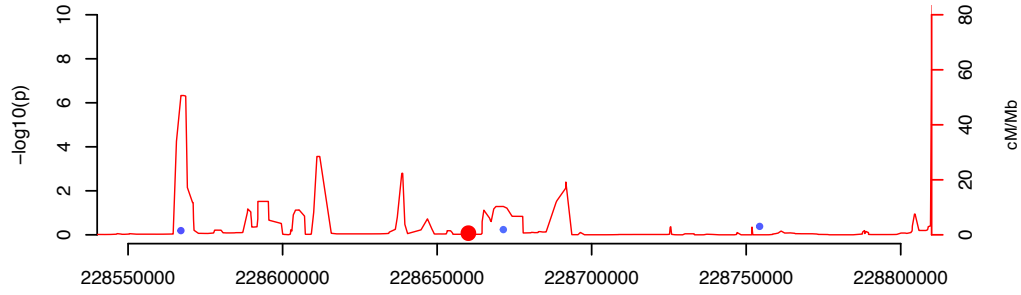
EAS: rs111781203 IBD



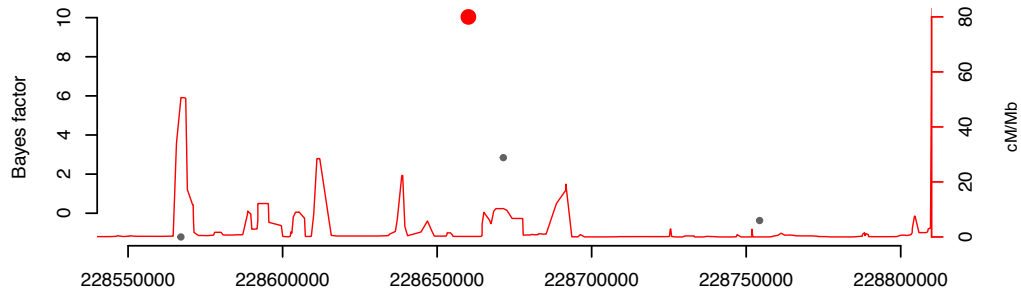
IND: rs111781203 IBD



IRA: rs111781203 IBD



MANTRA meta-analysis: rs111781203 IBD

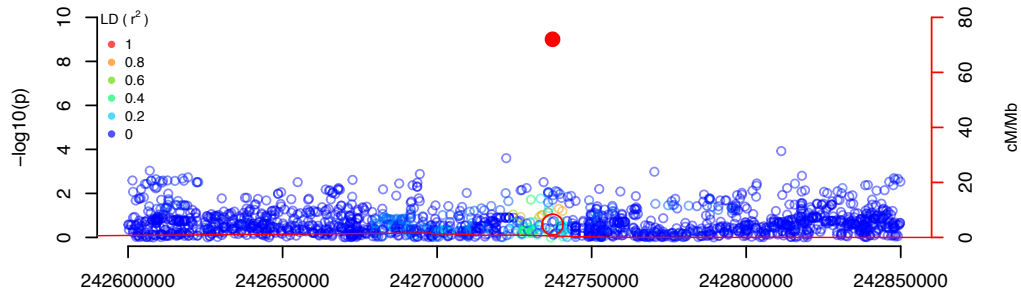


SLC19A3

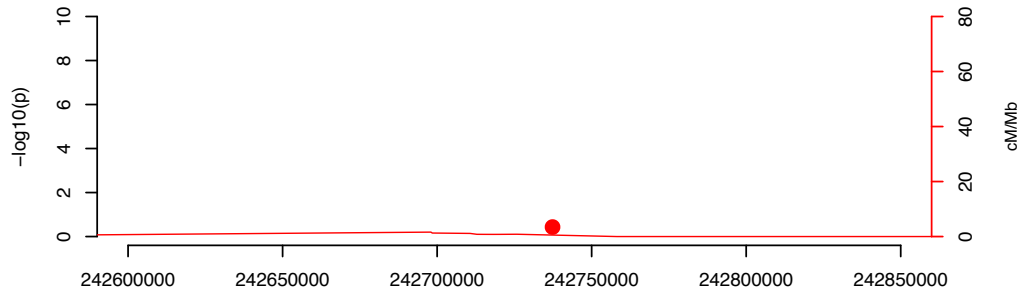
CCL20

DAW1

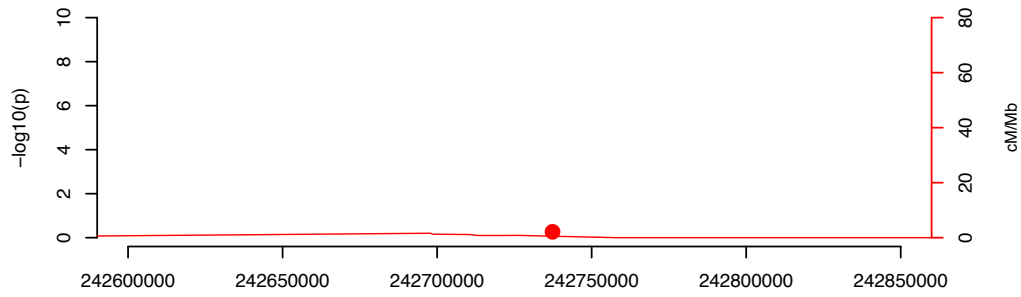
EUR: rs35320439 CD



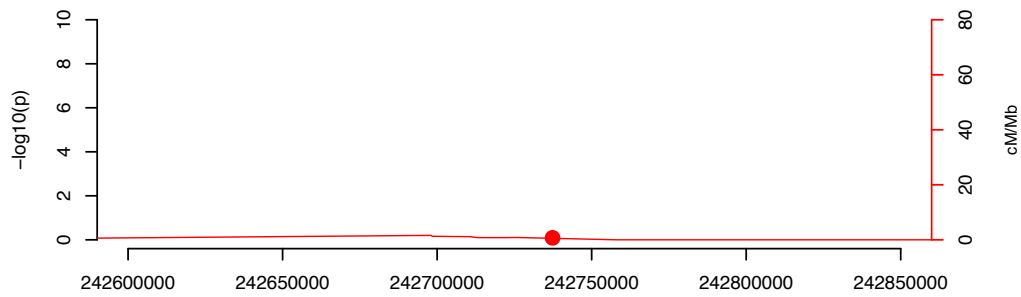
EAS: rs35320439 CD



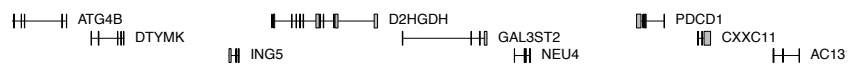
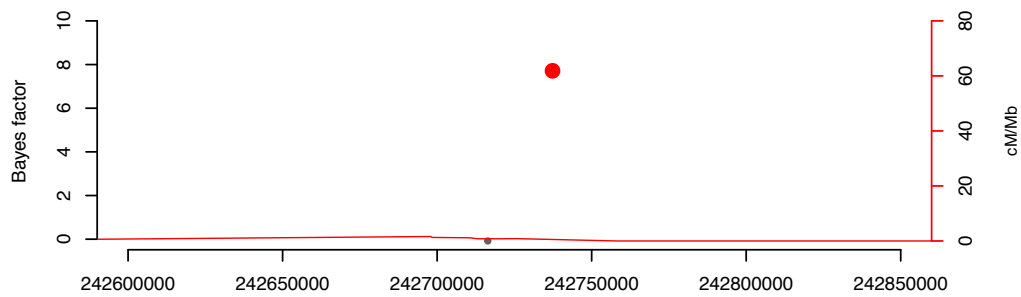
IND: rs35320439 CD



IRA: rs35320439 CD

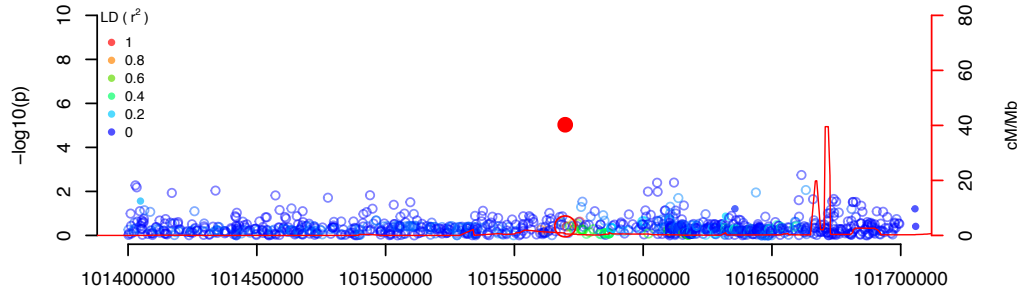


MANTRA meta-analysis: rs35320439 CD

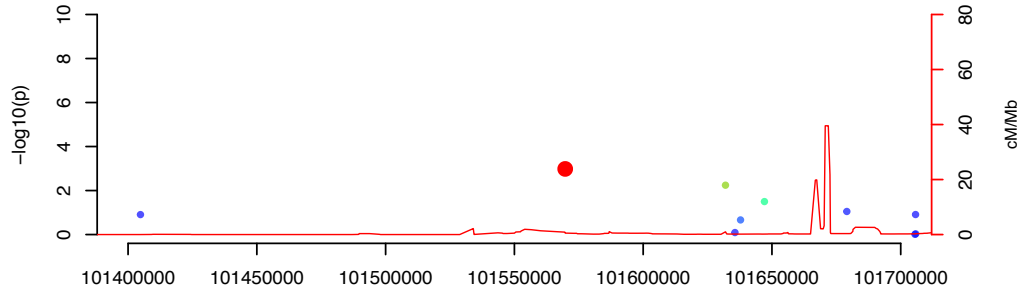




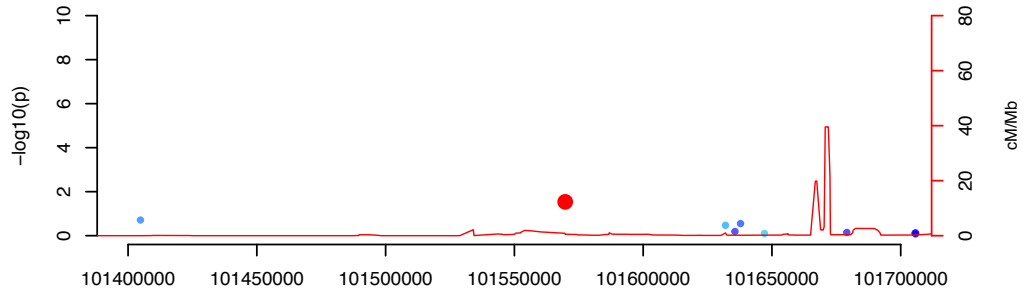
EUR: rs616597 UC



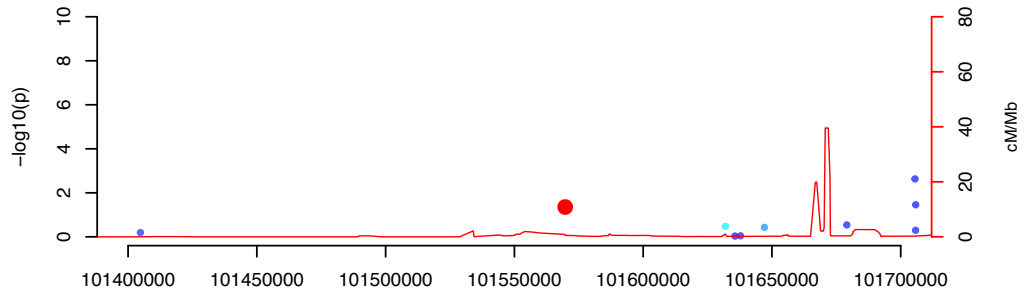
EAS: rs616597 UC



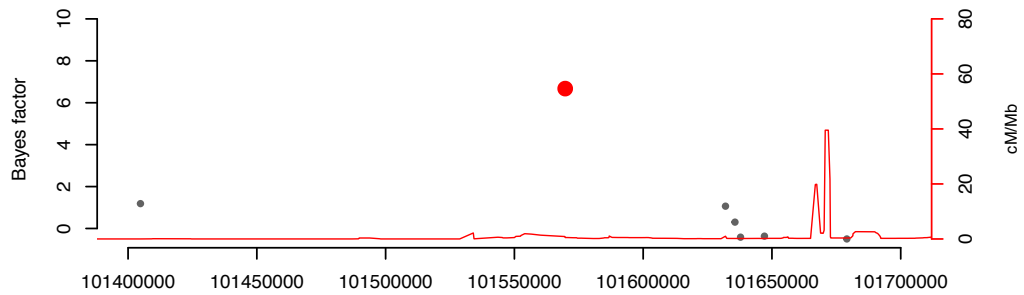
IND: rs616597 UC



IRA: rs616597 UC

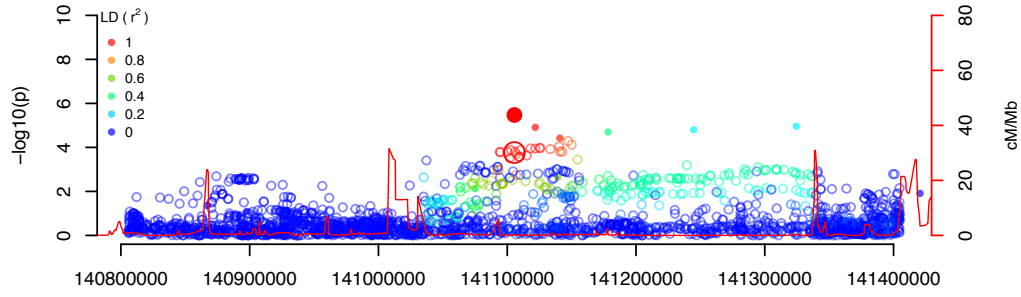


MANTRA meta-analysis: rs616597 UC

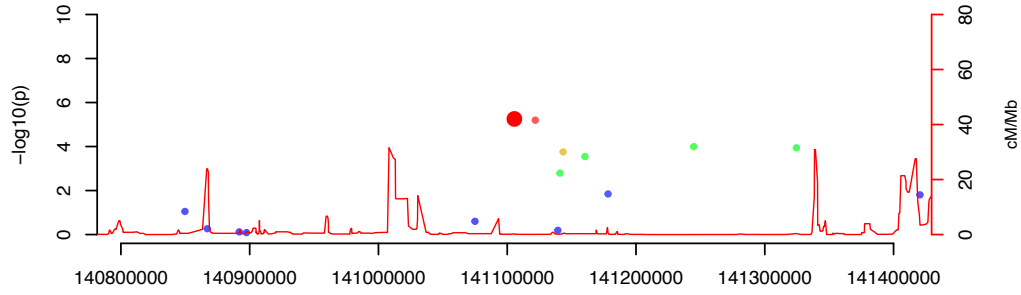


RPL24 CEP97 NFKBIZ  
NXPE3

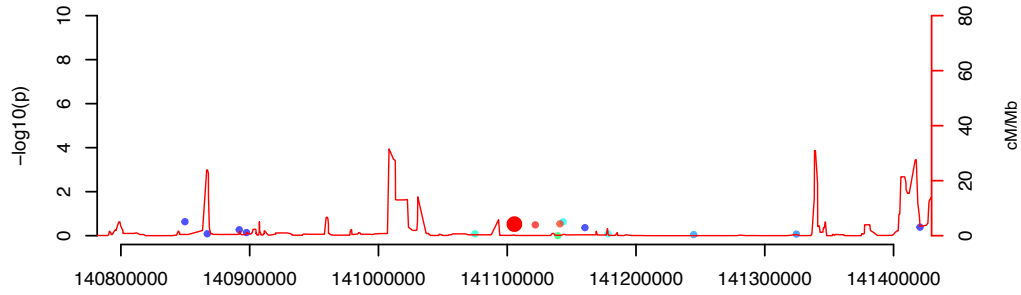
EUR: rs724016 CD



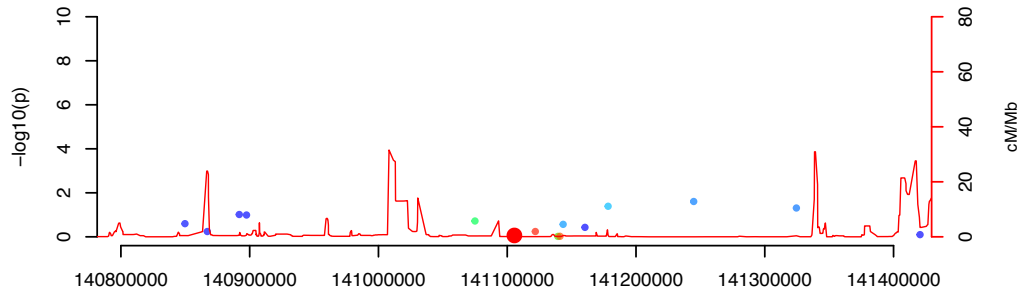
EAS: rs724016 CD



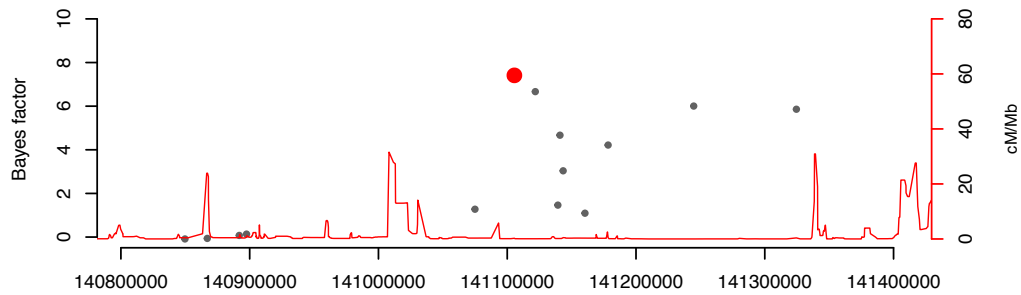
IND: rs724016 CD



IRA: rs724016 CD

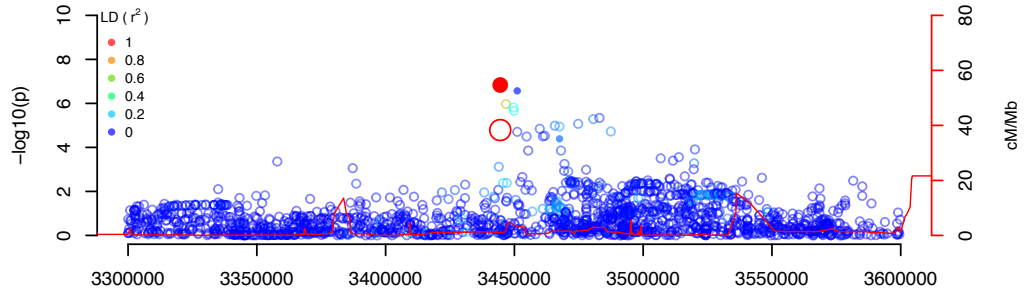


MANTRA meta-analysis: rs724016 CD

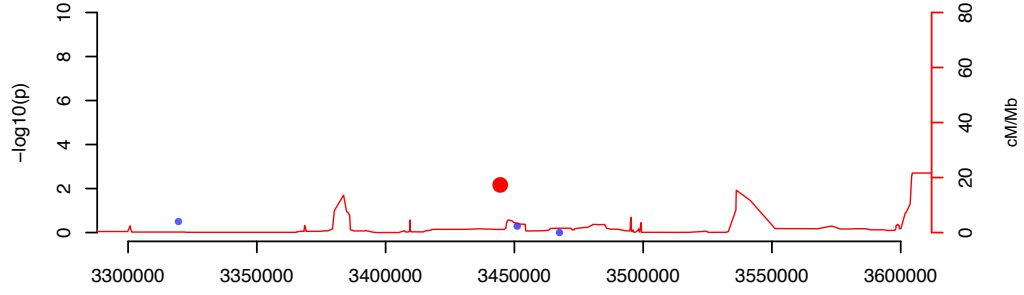


SPSB4 ACPL2 ZBTB38 RASA2

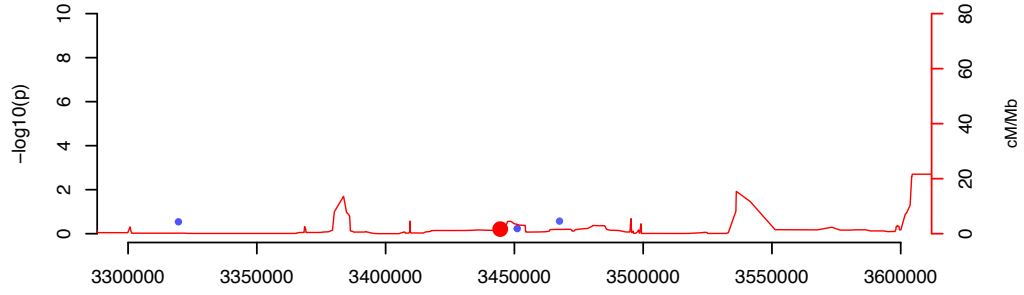
EUR: rs2073505 IBD



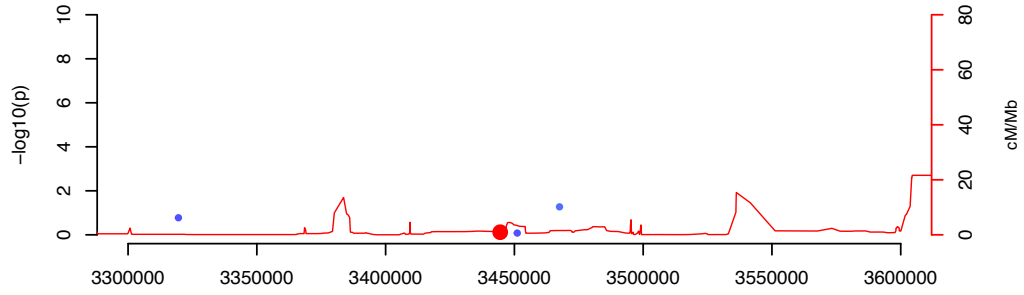
EAS: rs2073505 IBD



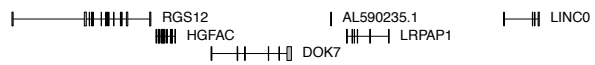
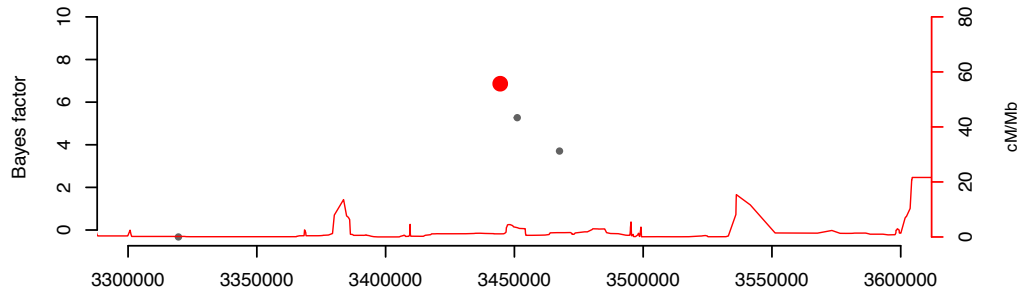
IND: rs2073505 IBD



IRA: rs2073505 IBD

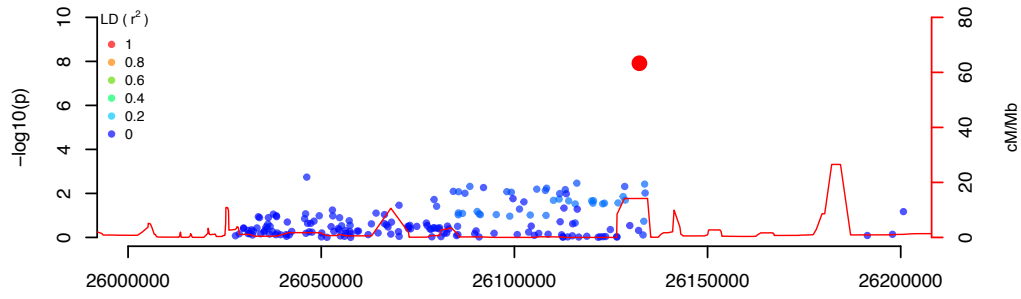


MANTRA meta-analysis: rs2073505 IBD

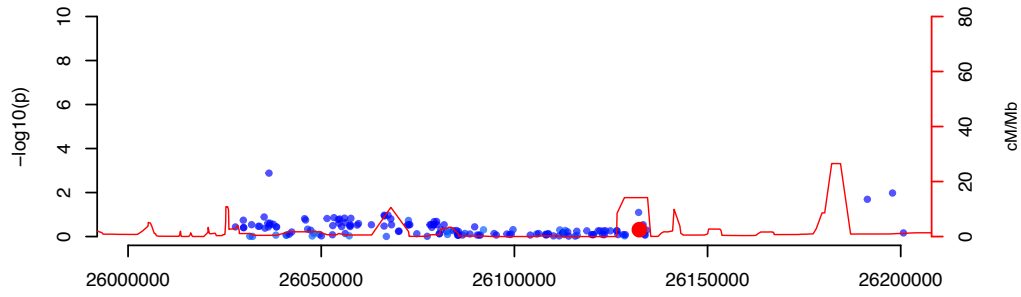




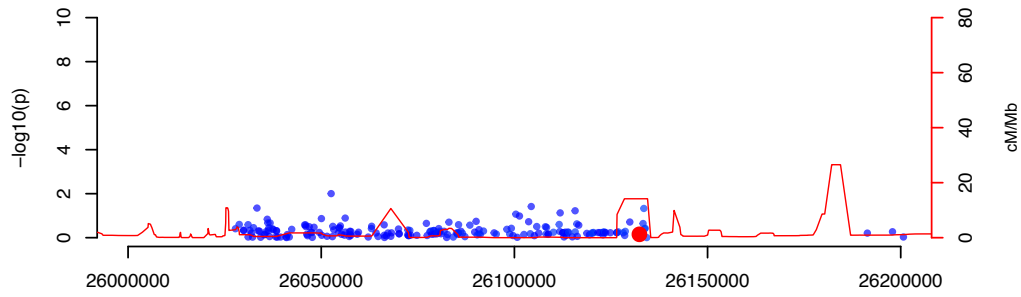
EUR: rs4692386 IBD



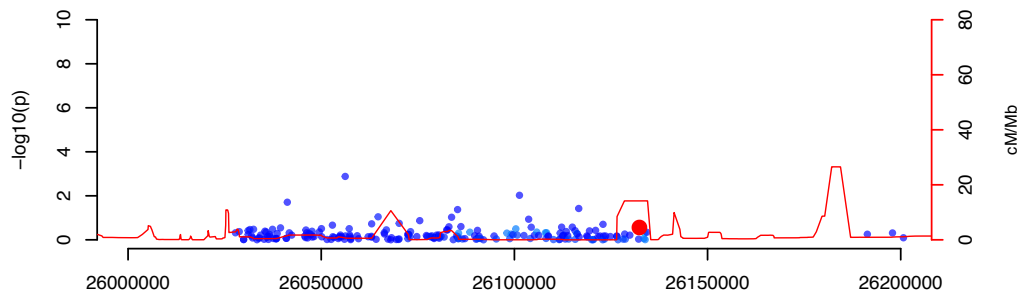
EAS: rs4692386 IBD



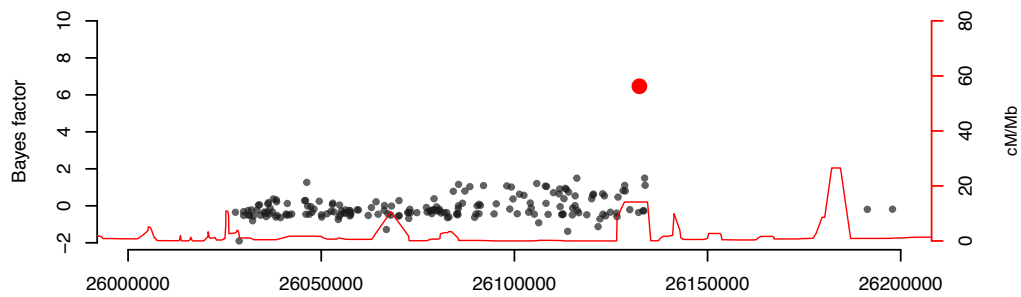
IND: rs4692386 IBD



IRA: rs4692386 IBD

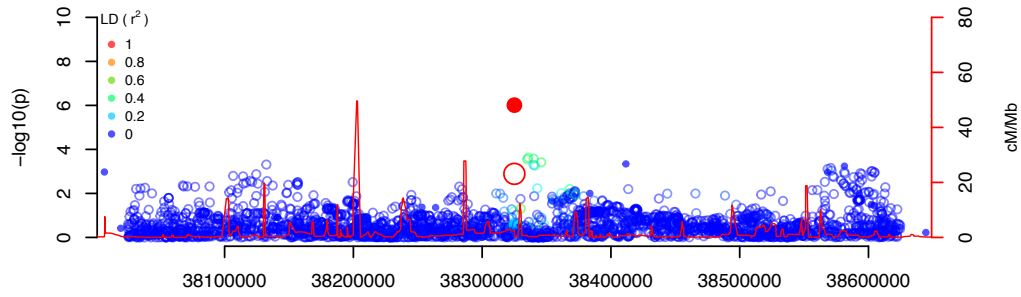


MANTRA meta-analysis: rs4692386 IBD

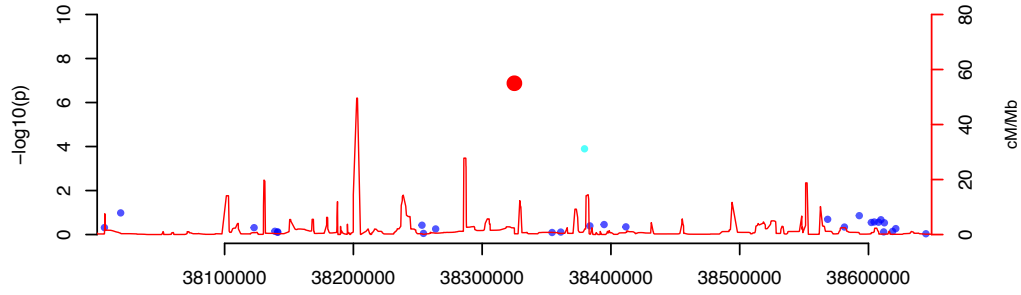


RBPJ |

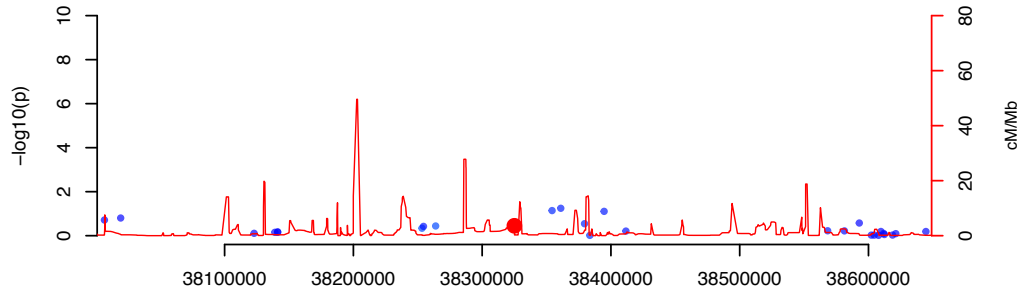
EUR: rs6856616 IBD



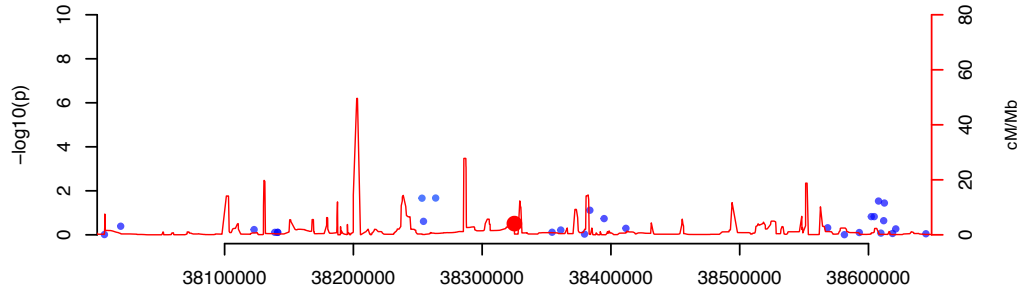
EAS: rs6856616 IBD



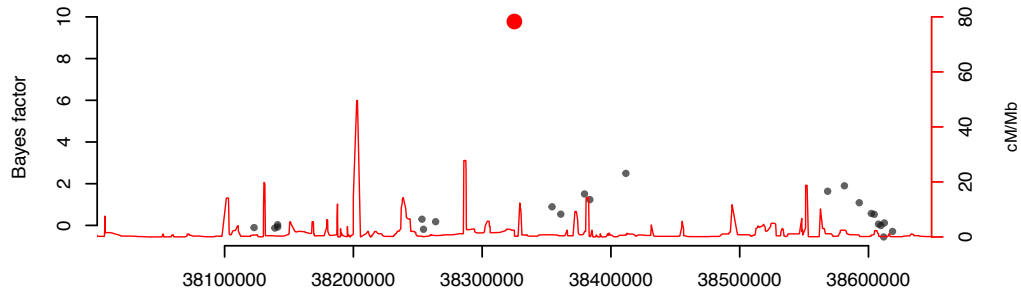
IND: rs6856616 IBD



IRA: rs6856616 IBD



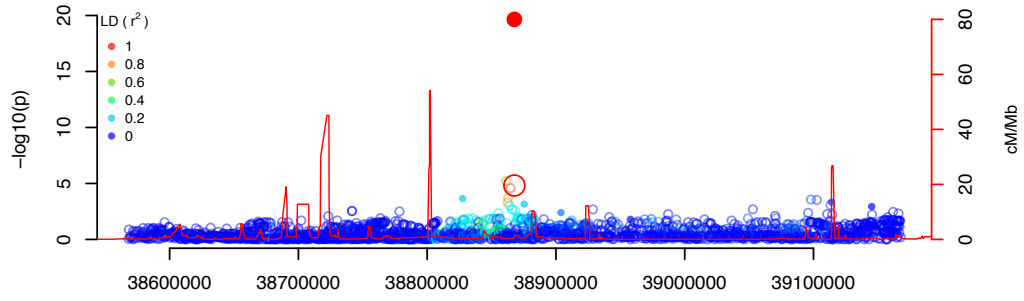
MANTRA meta-analysis: rs6856616 IBD



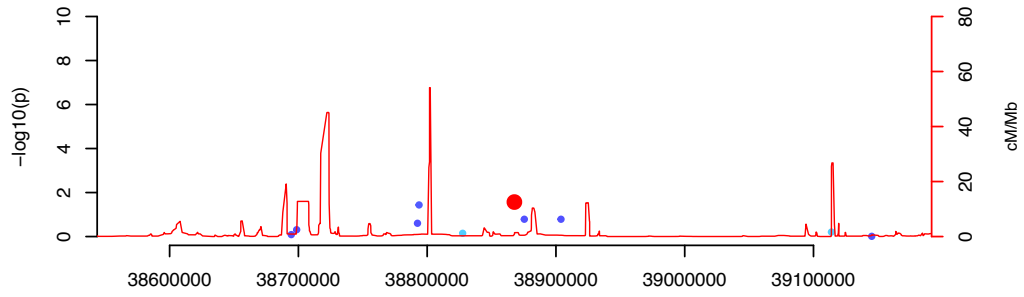
||| TBC1D1



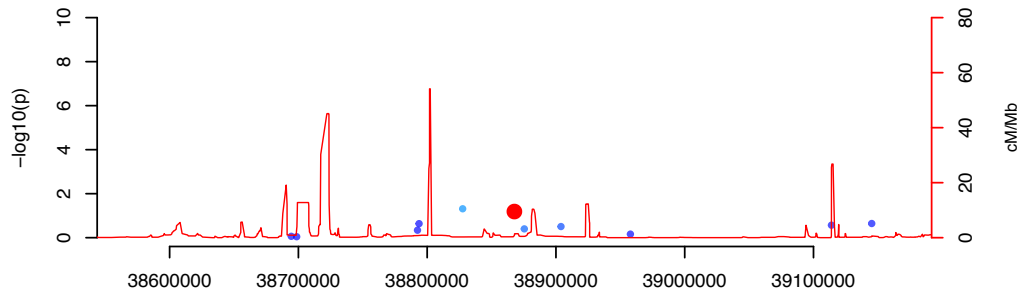
EUR: rs395157 IBD



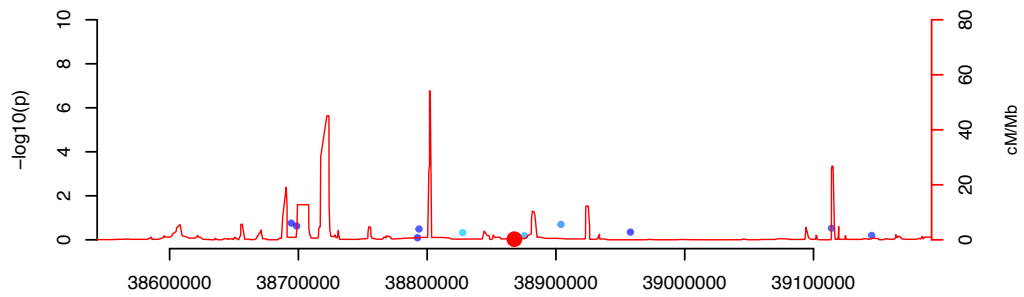
EAS: rs395157 IBD



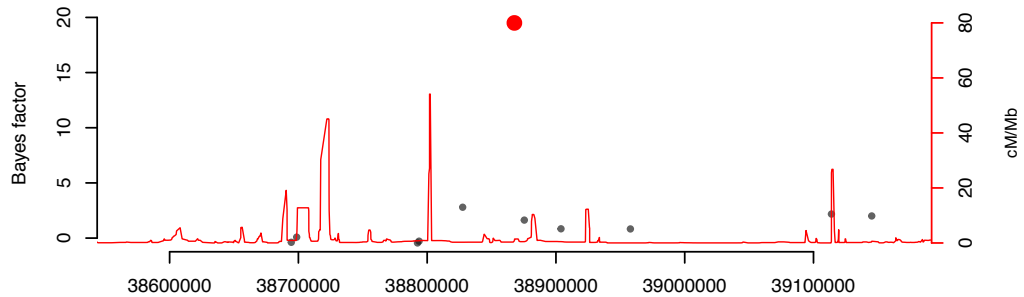
IND: rs395157 IBD



IRA: rs395157 IBD



MANTRA meta-analysis: rs395157 IBD

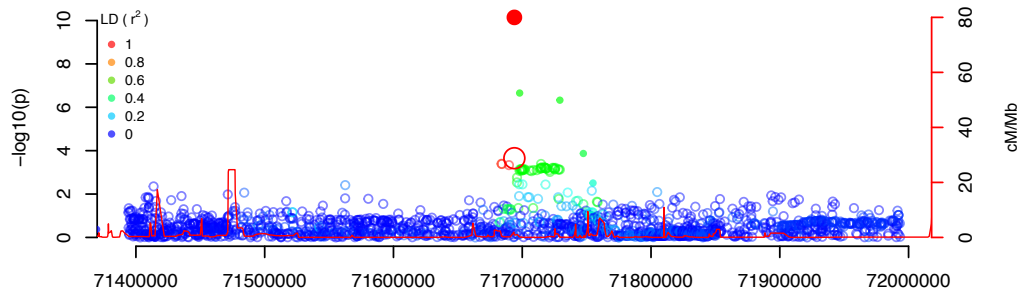


—| LIFR

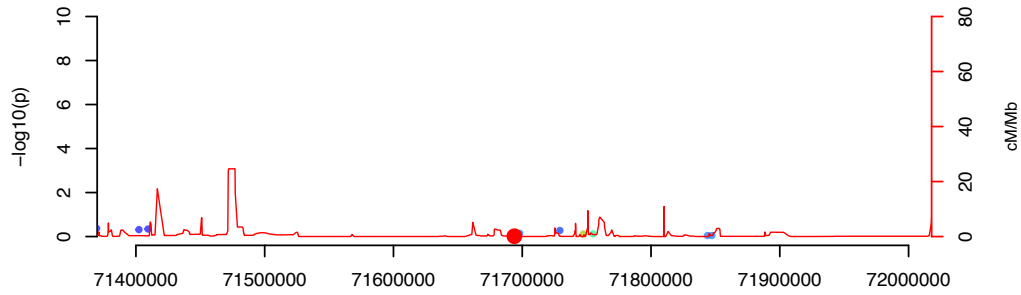
—| OSMR  
—| RICTOR

—| AC008964.1  
—| FYB —|

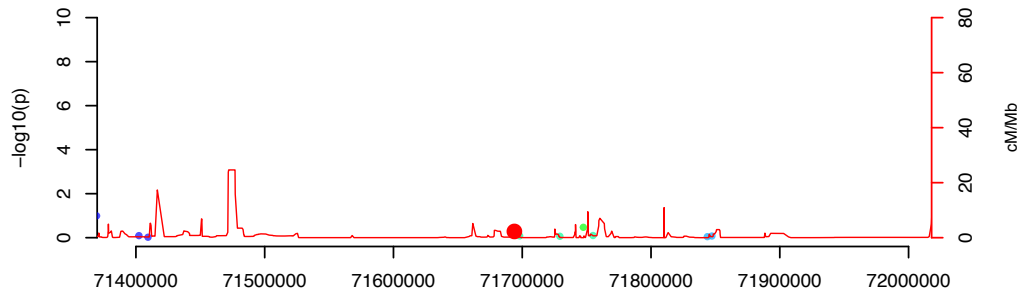
EUR: rs4703855 IBD



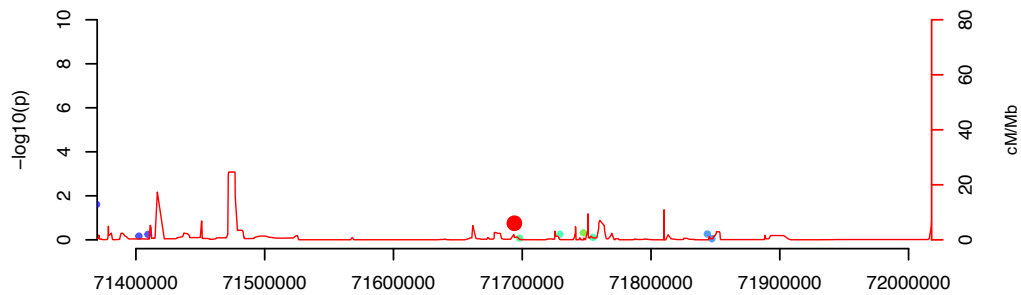
EAS: rs4703855 IBD



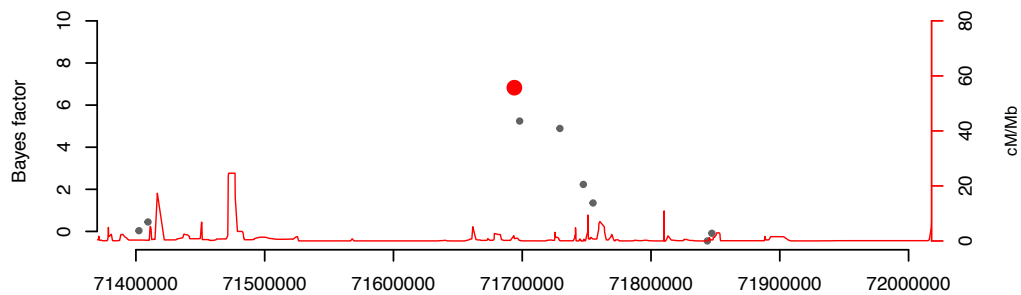
IND: rs4703855 IBD



IRA: rs4703855 IBD



MANTRA meta-analysis: rs4703855 IBD

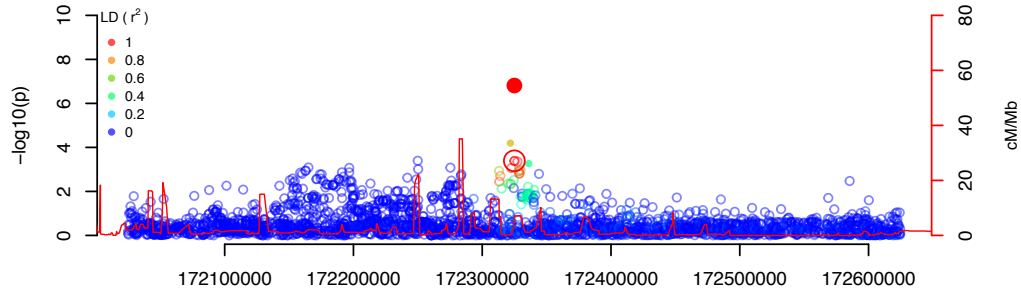


MAP1B

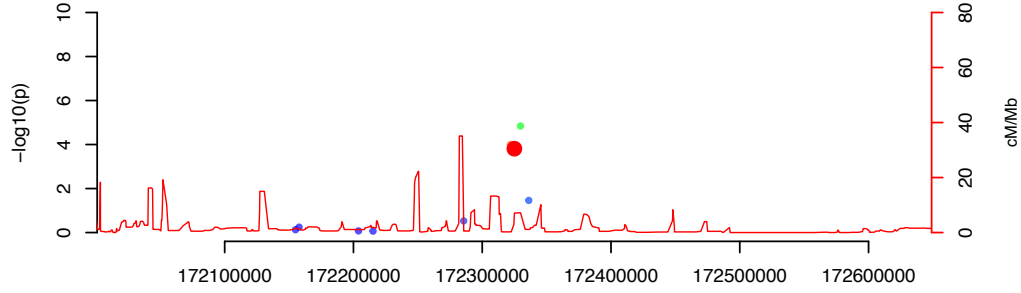
MRPS27  
PTCD2

ZNF366

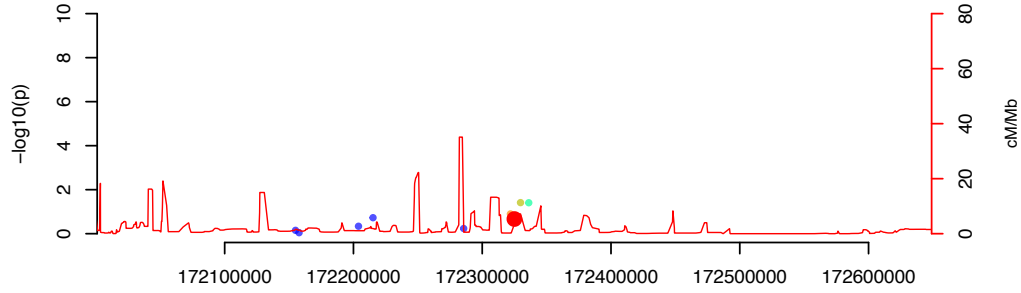
EUR: rs564349 IBD



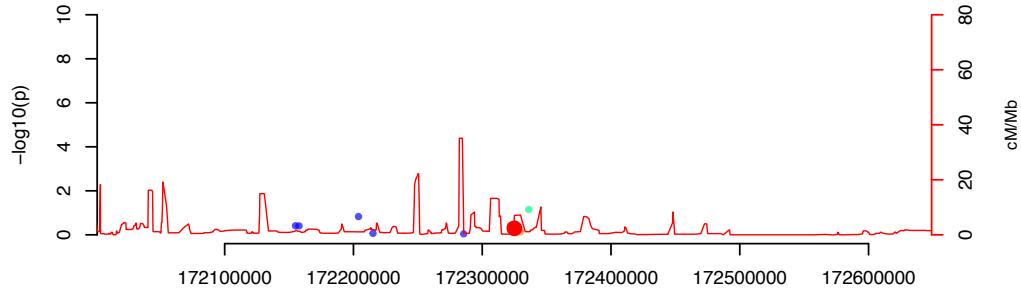
EAS: rs564349 IBD



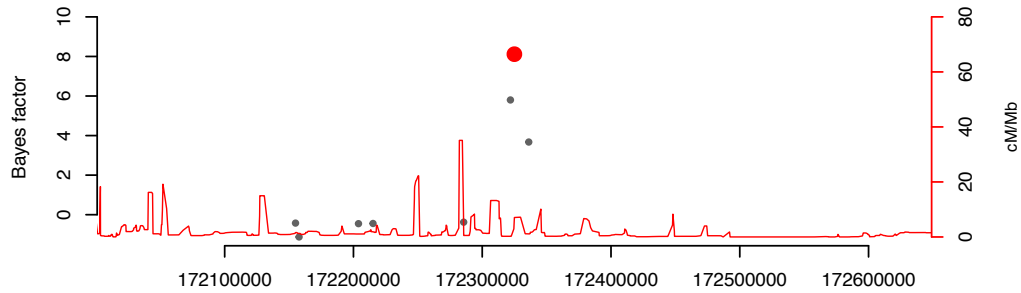
IND: rs564349 IBD



IRA: rs564349 IBD

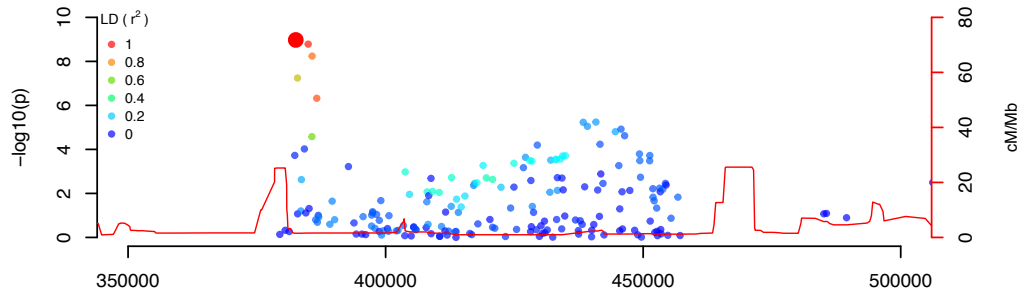


MANTRA meta-analysis: rs564349 IBD

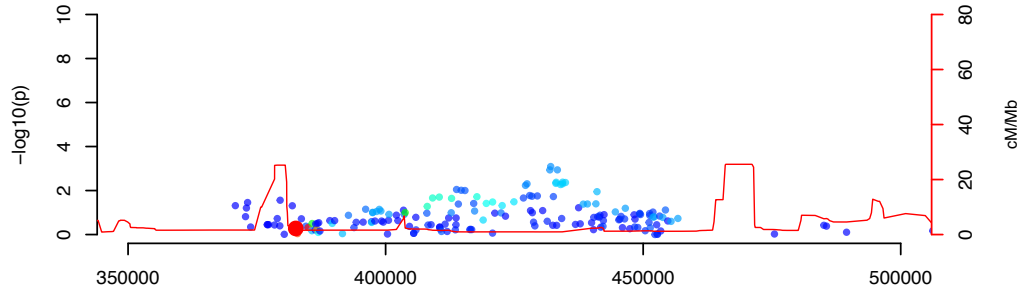


AC027309.1 | NEURL1B | DUSP1 | ERGIC1 | CREBRF | RPL26L1 | ATP6V0E1 | BNIP1

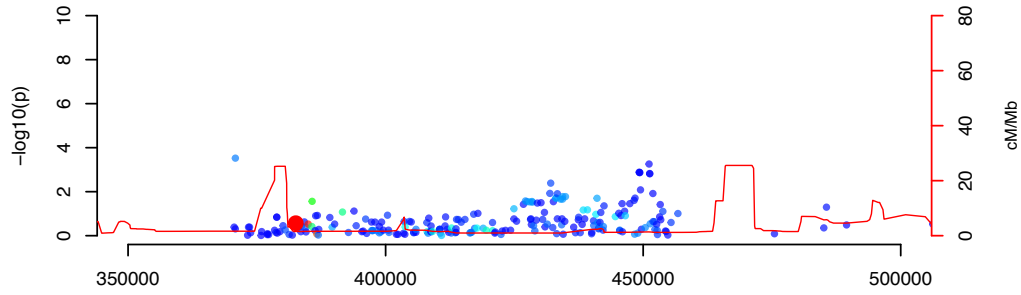
EUR: rs7773324 CD



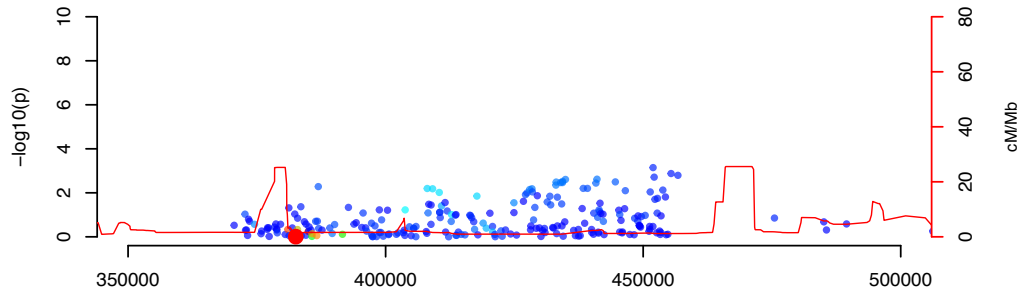
EAS: rs7773324 CD



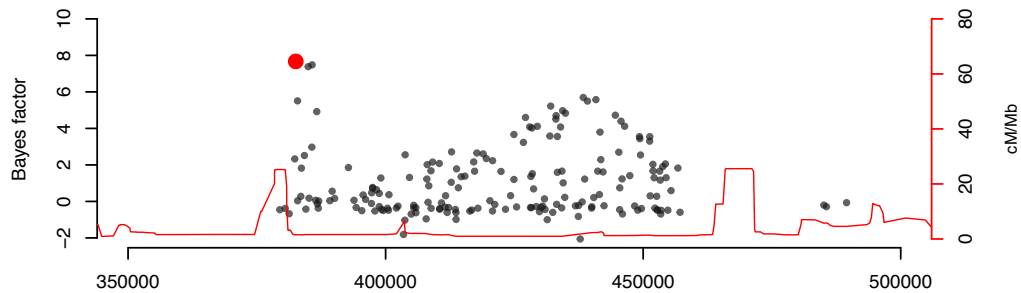
IND: rs7773324 CD



IRA: rs7773324 CD



MANTRA meta-analysis: rs7773324 CD

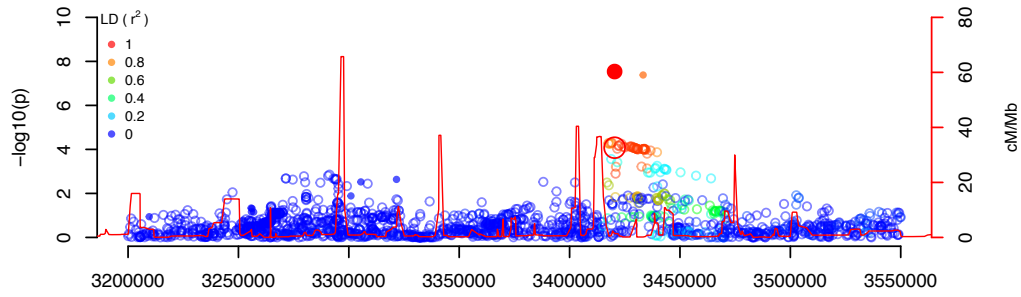


DUSP22

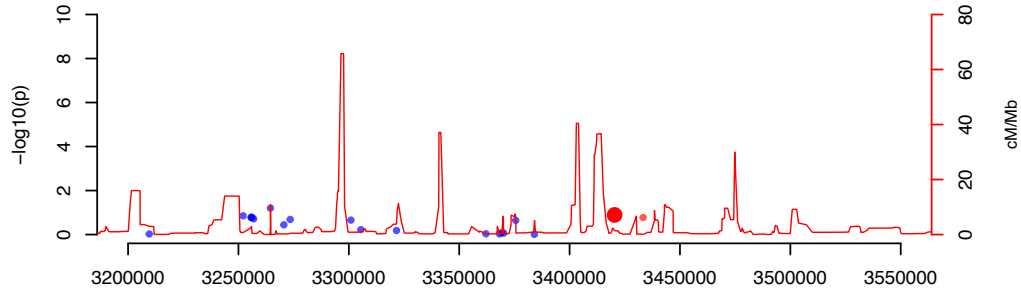
IRF4

EXOC2

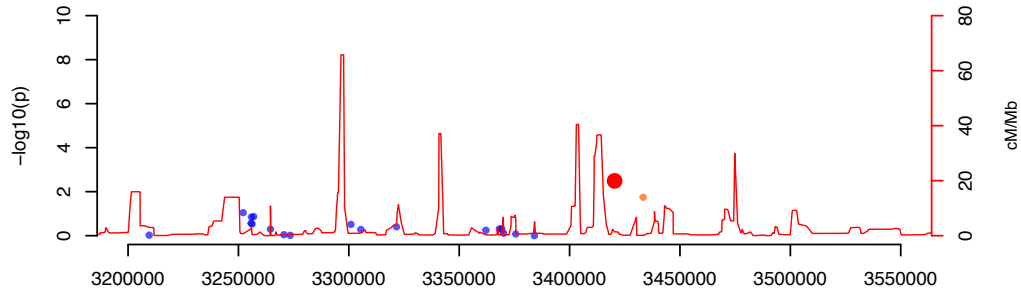
EUR: rs13204048 CD



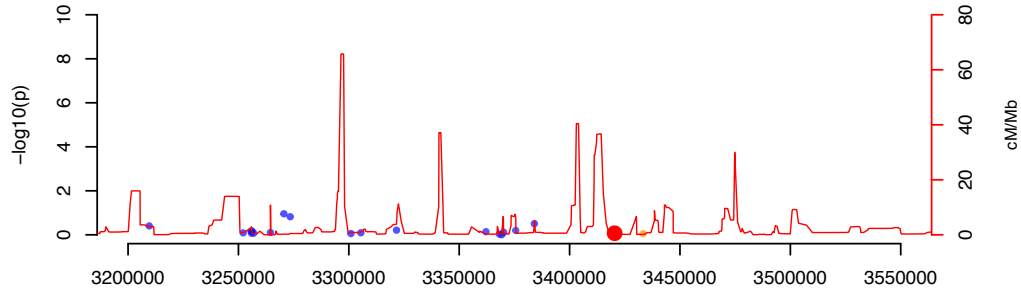
EAS: rs13204048 CD



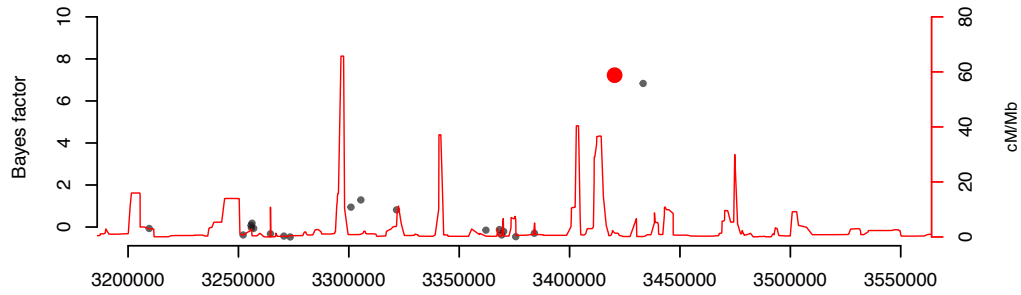
IND: rs13204048 CD



IRA: rs13204048 CD

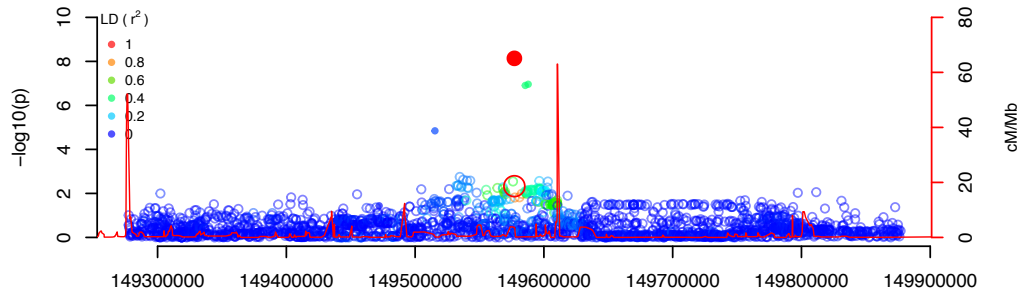


MANTRA meta-analysis: rs13204048 CD

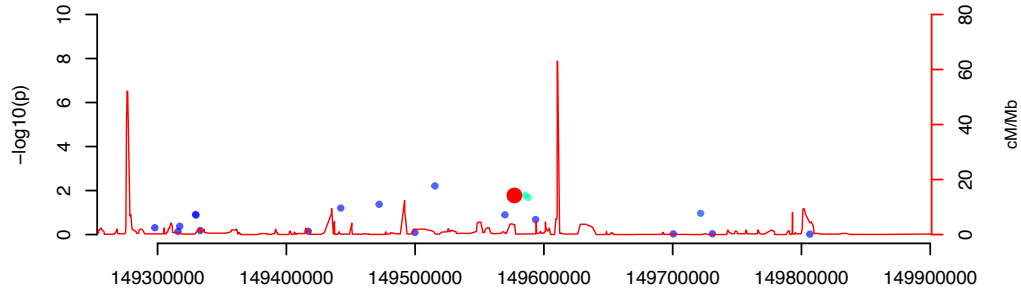




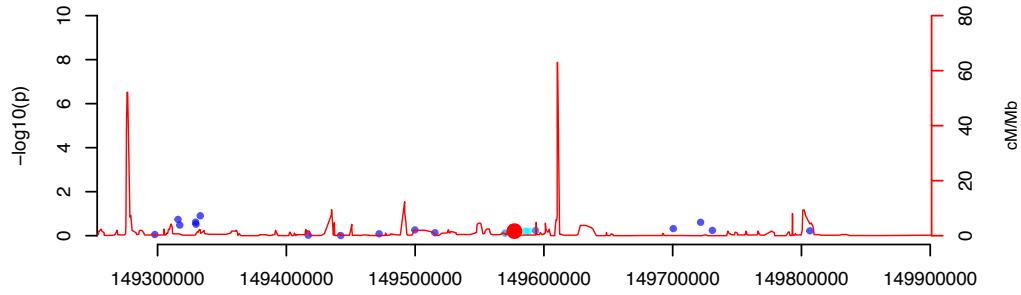
EUR: rs7758080 CD



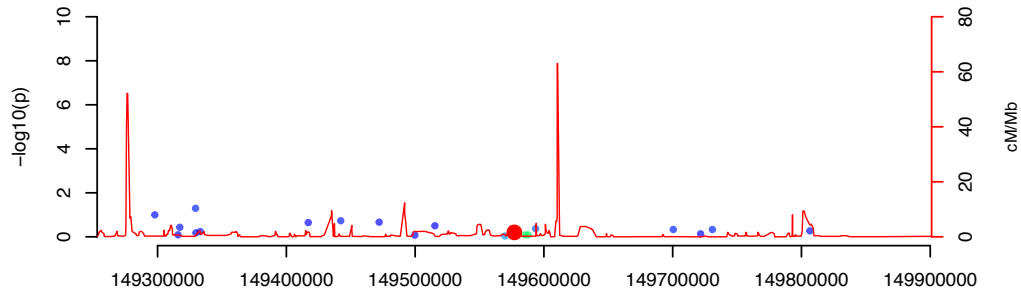
EAS: rs7758080 CD



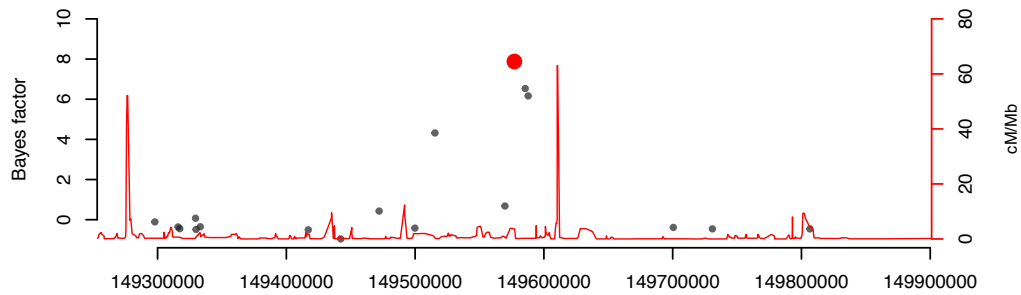
IND: rs7758080 CD



IRA: rs7758080 CD



MANTRA meta-analysis: rs7758080 CD



U ST

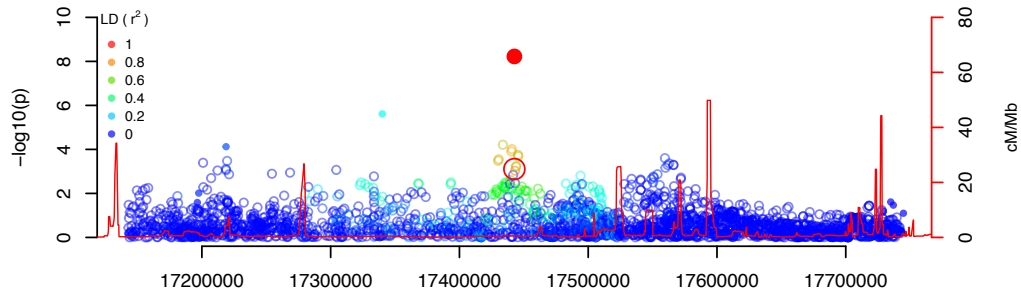
TAB2

SUMO4

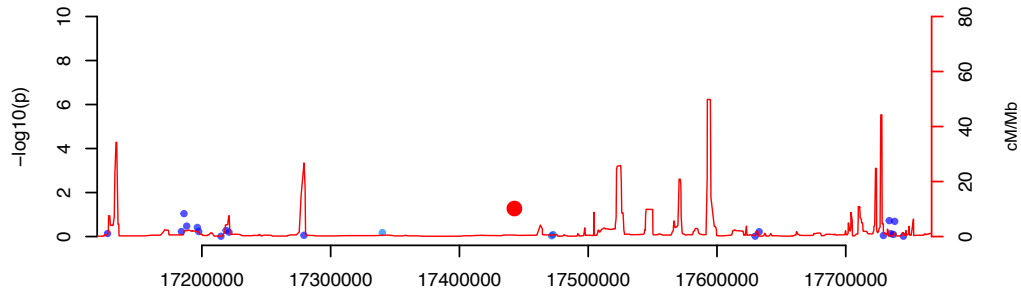
ZC3H12D

PPIL

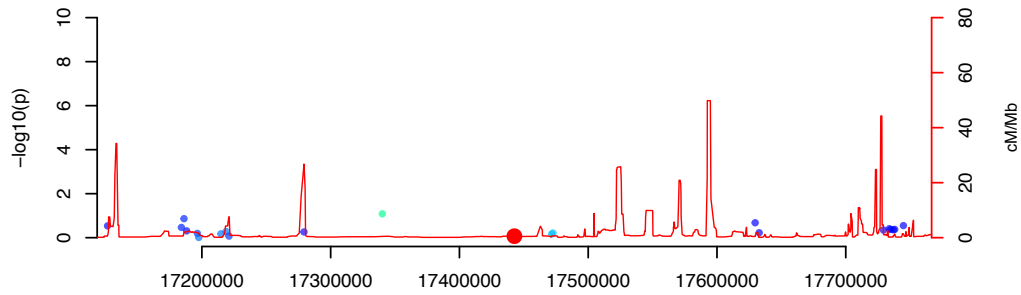
EUR: rs1077773 UC



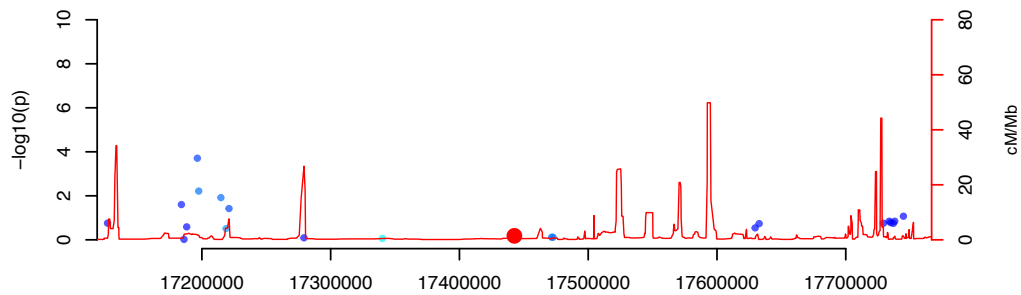
EAS: rs1077773 UC



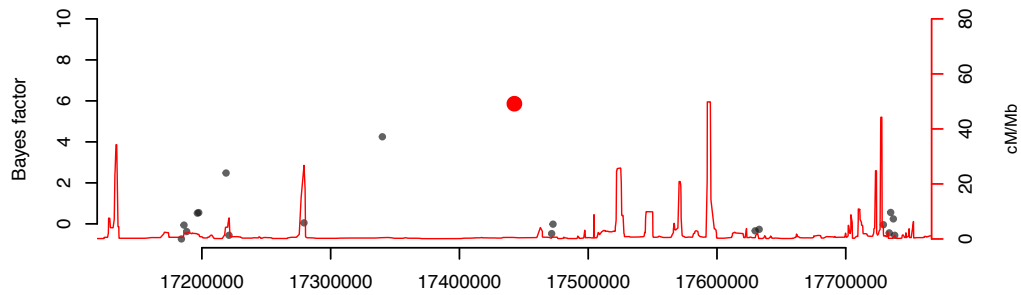
IND: rs1077773 UC



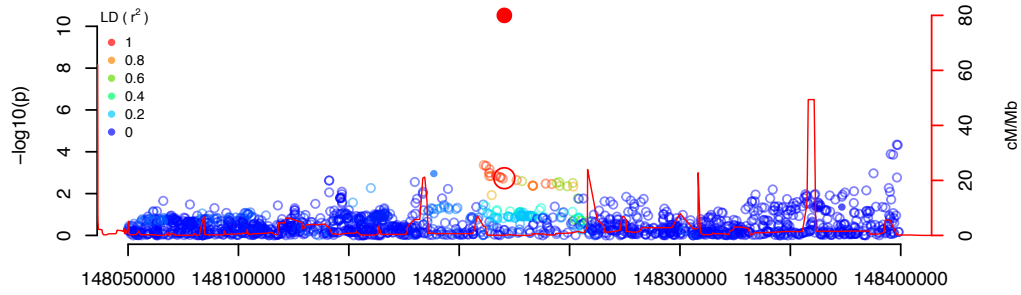
IRA: rs1077773 UC



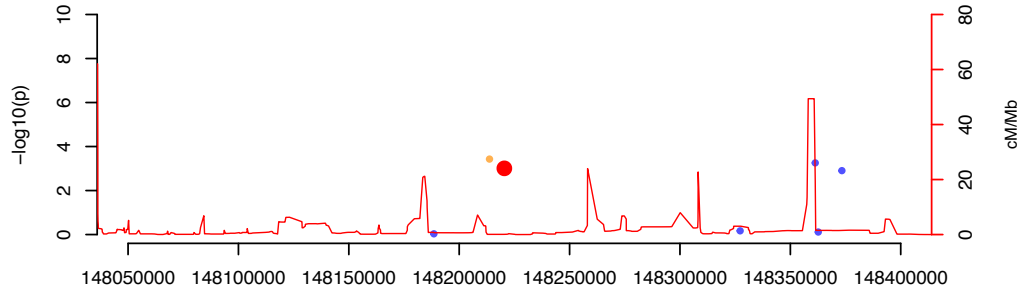
MANTRA meta-analysis: rs1077773 UC



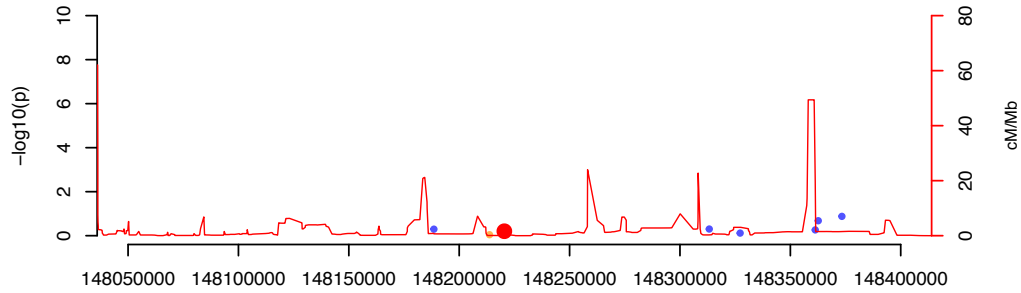
EUR: rs2538470 IBD



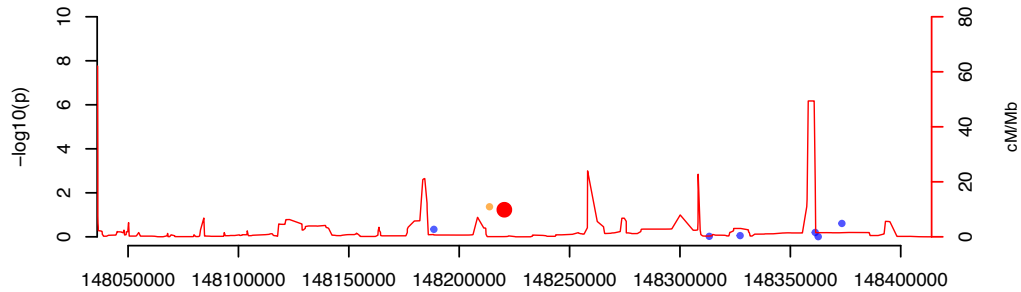
EAS: rs2538470 IBD



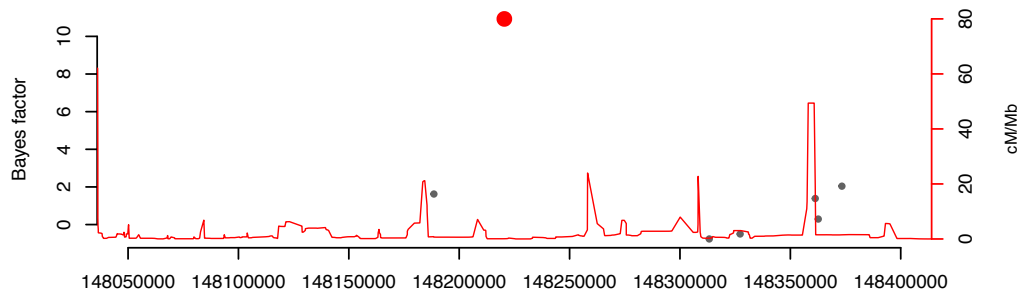
IND: rs2538470 IBD



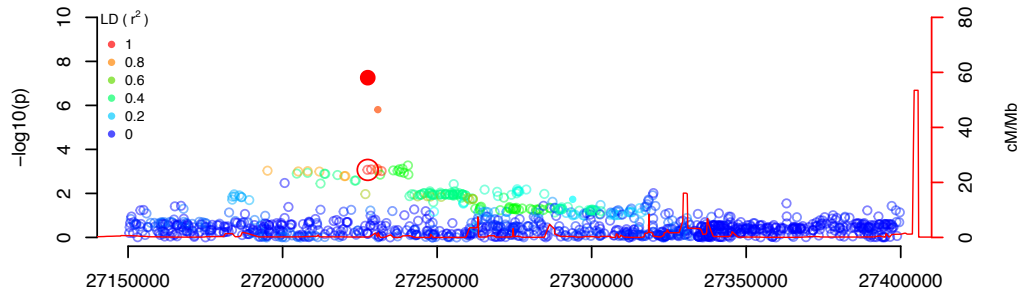
IRA: rs2538470 IBD



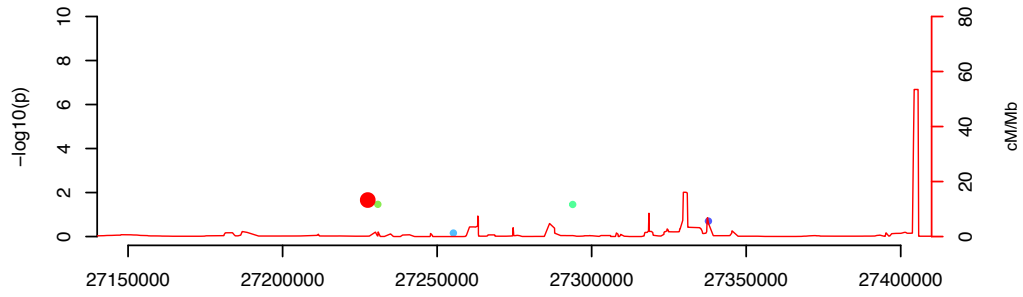
MANTRA meta-analysis: rs2538470 IBD



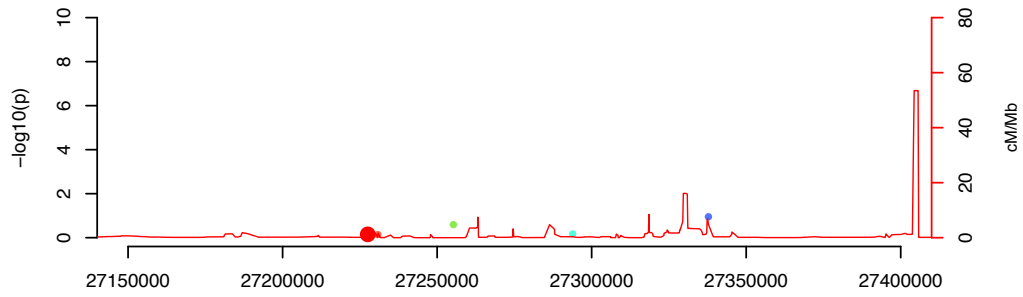
EUR: rs17057051 IBD



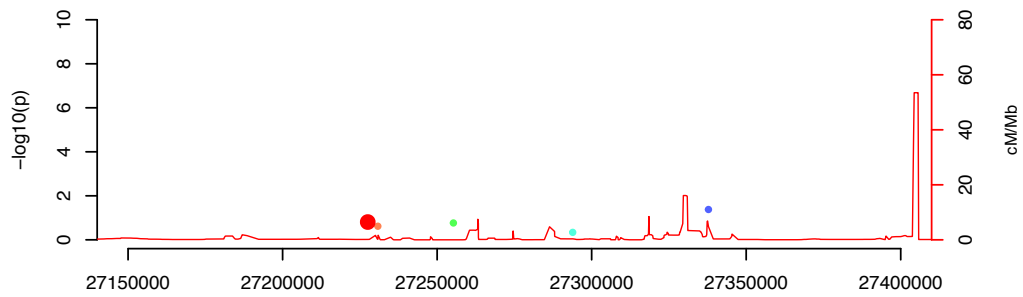
EAS: rs17057051 IBD



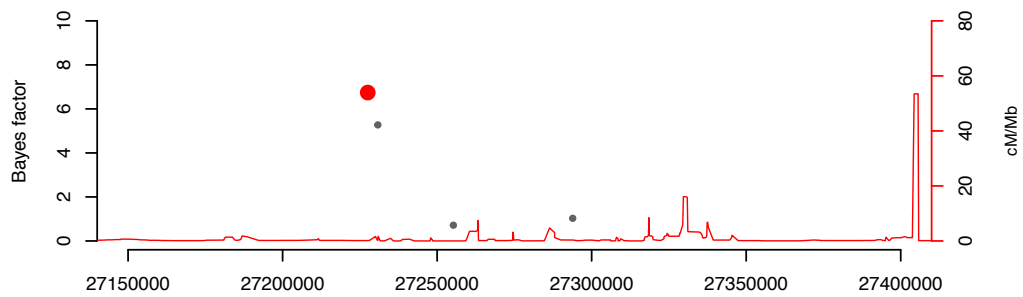
IND: rs17057051 IBD



IRA: rs17057051 IBD



MANTRA meta-analysis: rs17057051 IBD



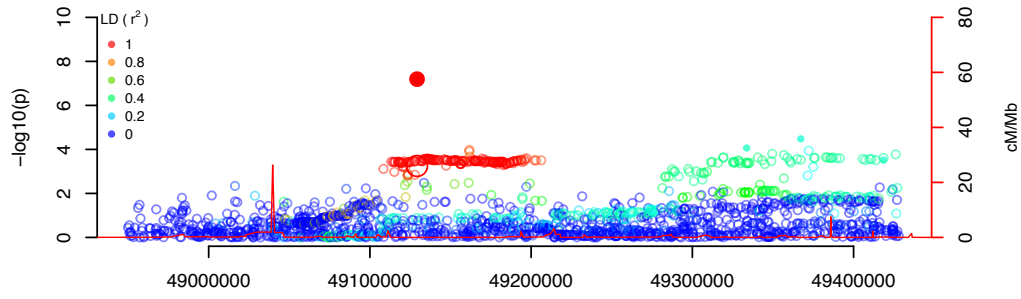
TRIM35

PTK2B

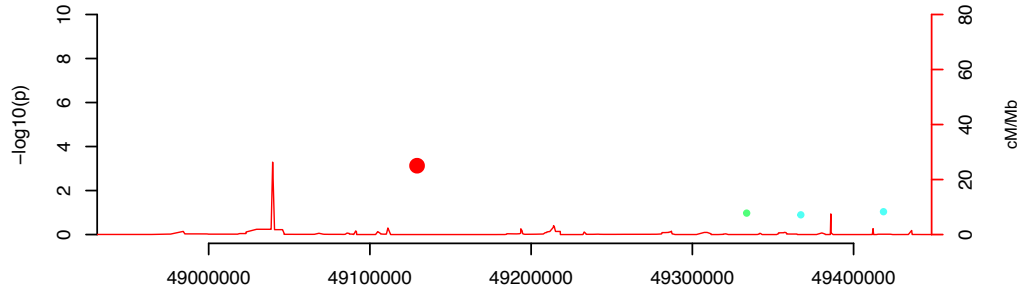
CHRNA2

EPH

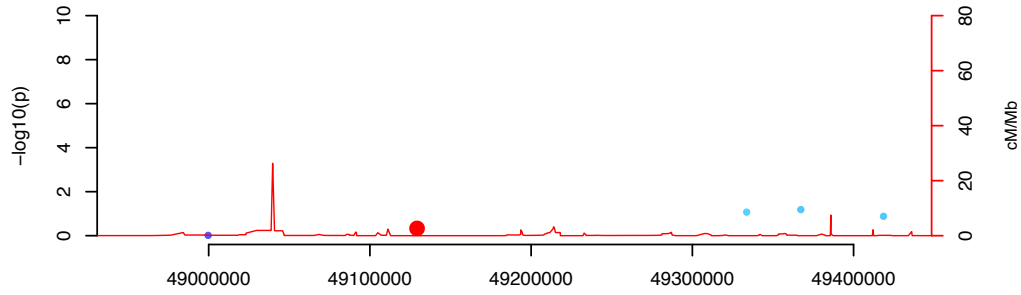
EUR: rs7011507 UC



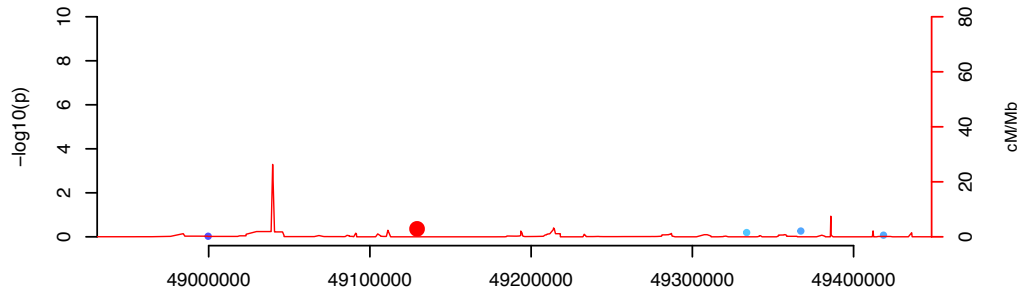
EAS: rs7011507 UC



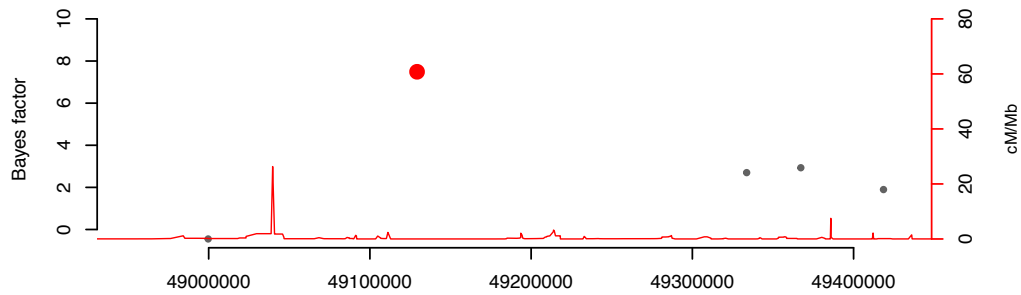
IND: rs7011507 UC



IRA: rs7011507 UC

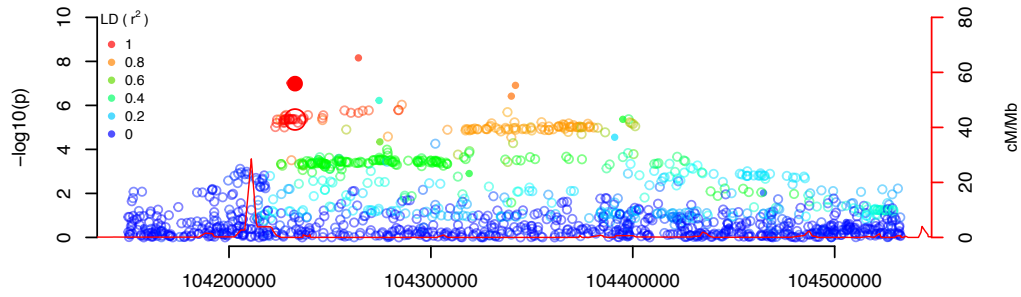


MANTRA meta-analysis: rs7011507 UC

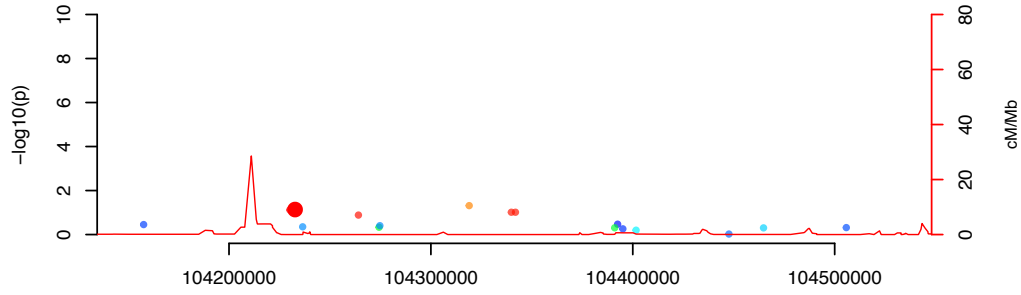


—|—|—| UBE2V2

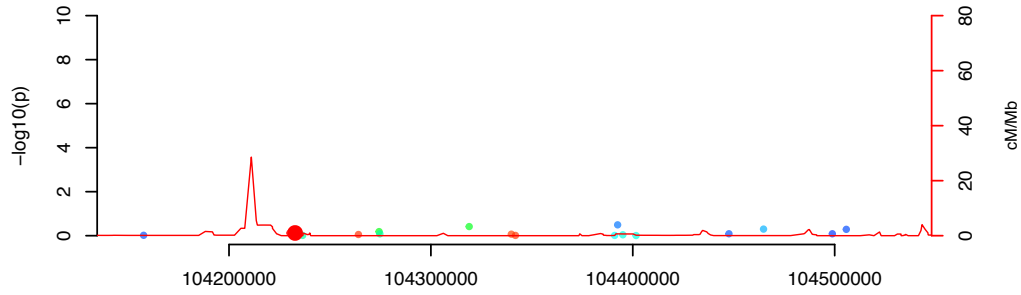
EUR: rs3740415 IBD



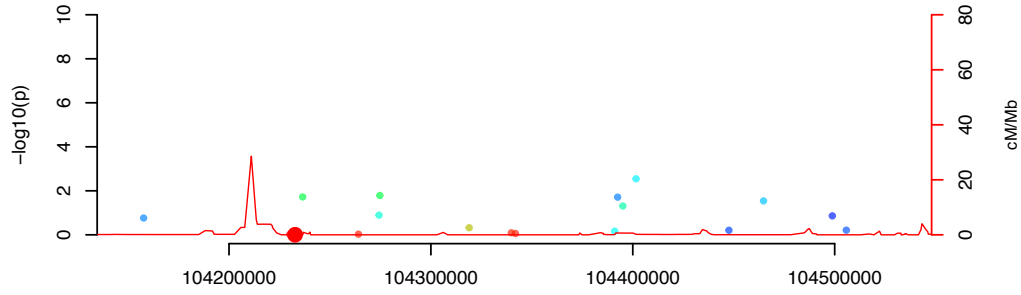
EAS: rs3740415 IBD



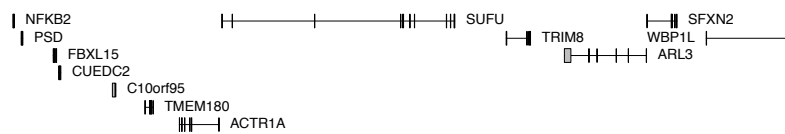
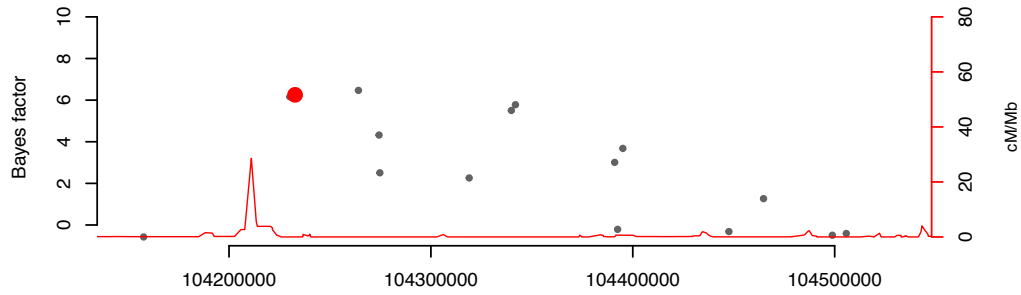
IND: rs3740415 IBD



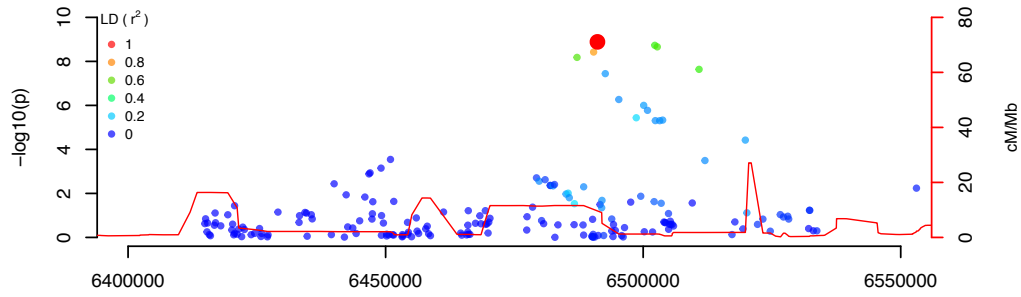
IRA: rs3740415 IBD



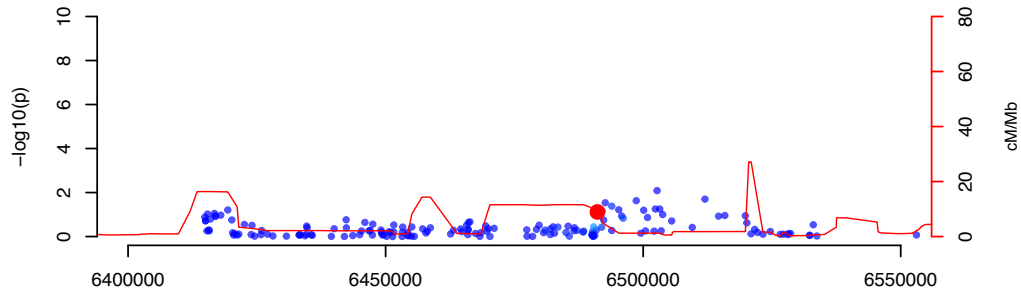
MANTRA meta-analysis: rs3740415 IBD



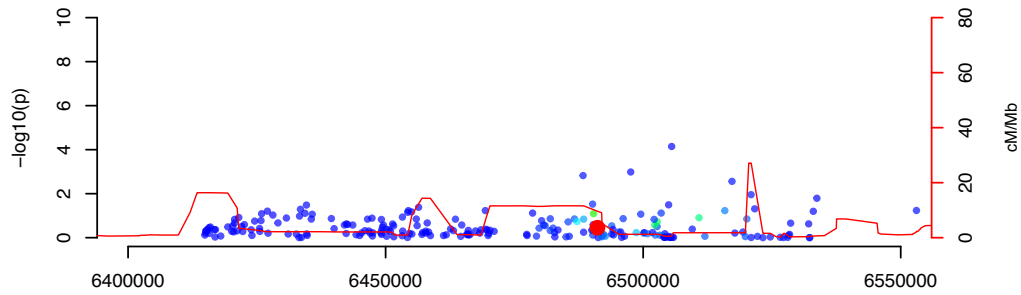
EUR: rs7954567 CD



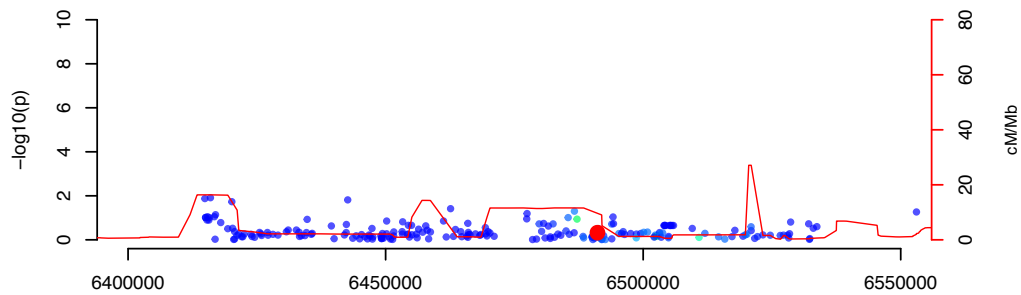
EAS: rs7954567 CD



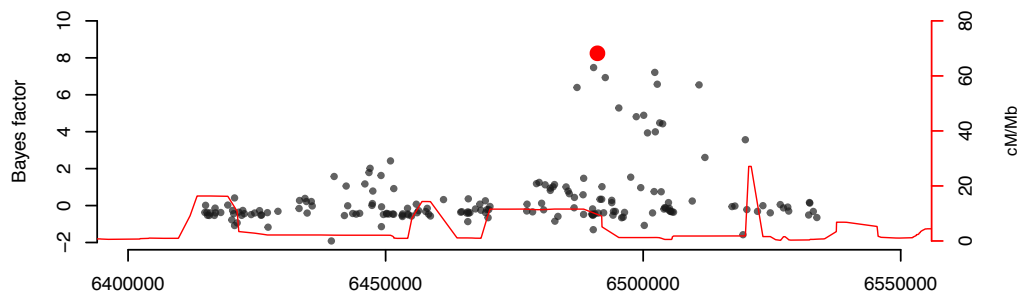
IND: rs7954567 CD



IRA: rs7954567 CD

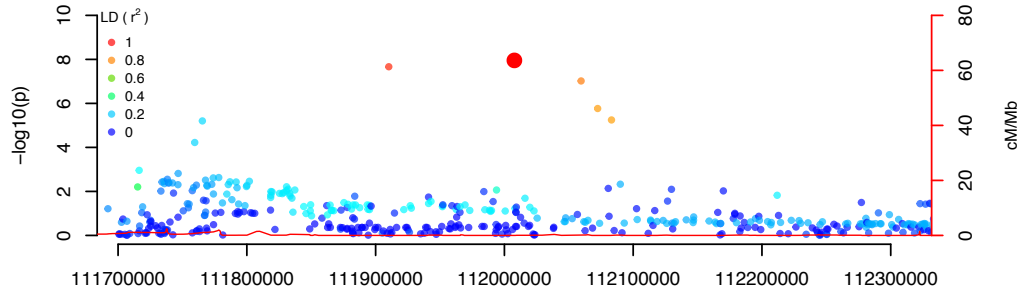


MANTRA meta-analysis: rs7954567 CD

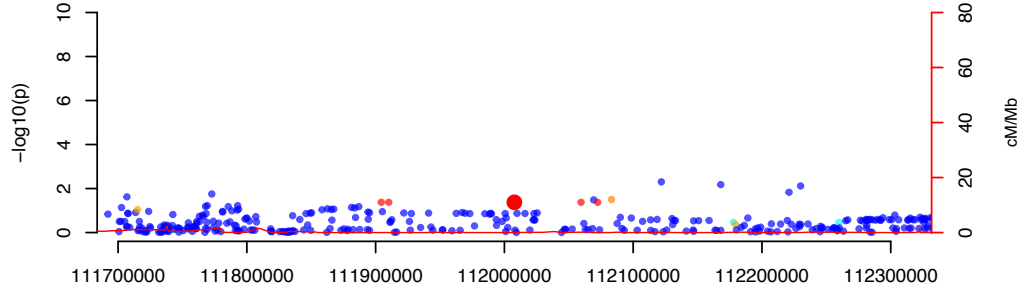


||||| PLEKHG6      ||| SCNN1A  
||| TNFRSF1A      ||| LTBR

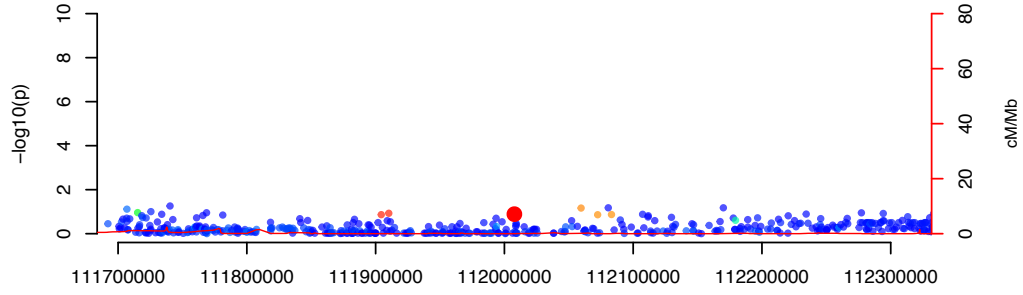
EUR: rs653178 IBD



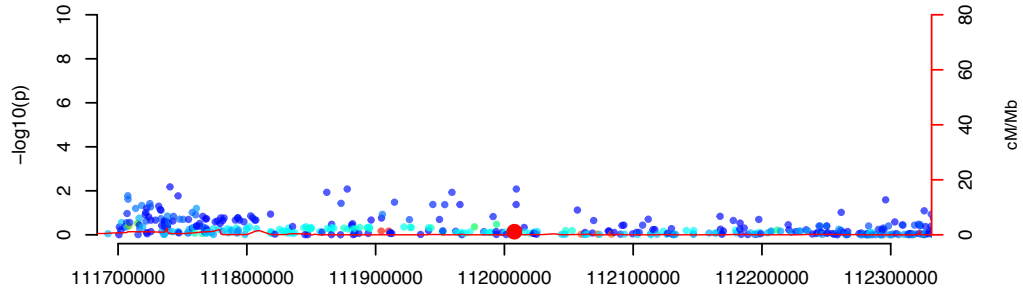
EAS: rs653178 IBD



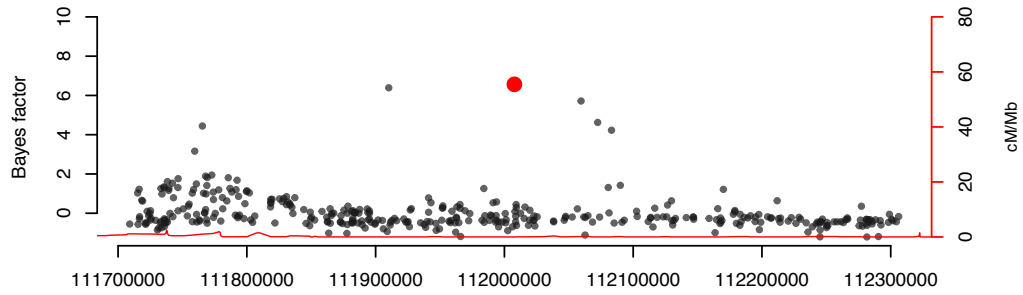
IND: rs653178 IBD



IRA: rs653178 IBD

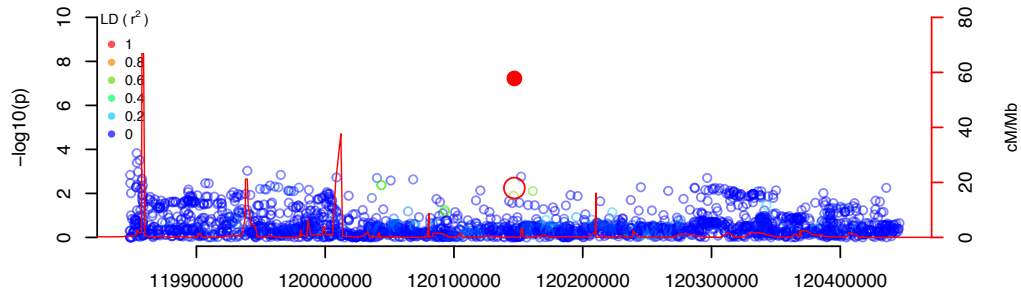


MANTRA meta-analysis: rs653178 IBD

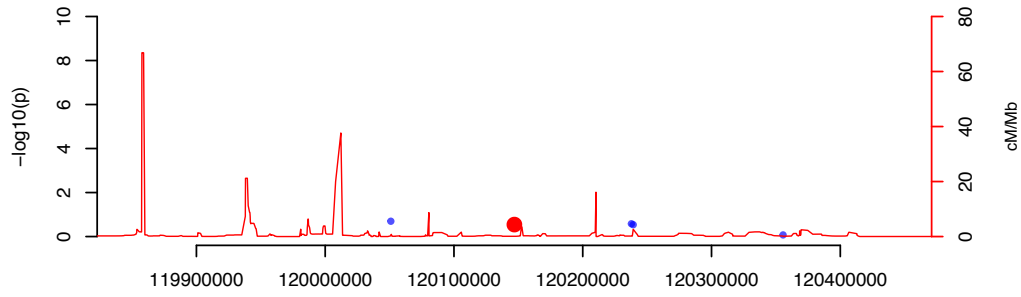




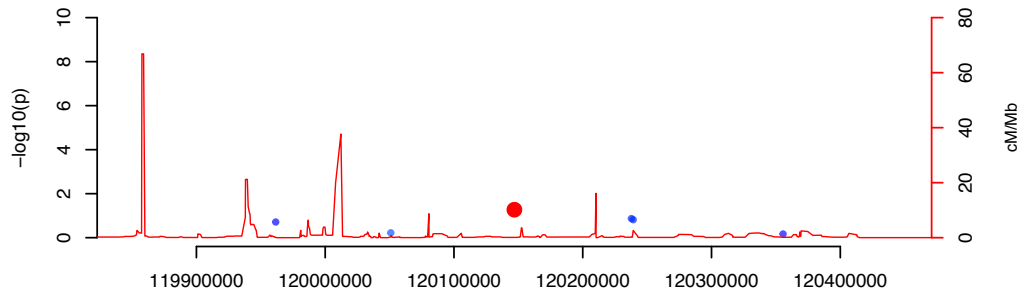
EUR: rs11064881 IBD



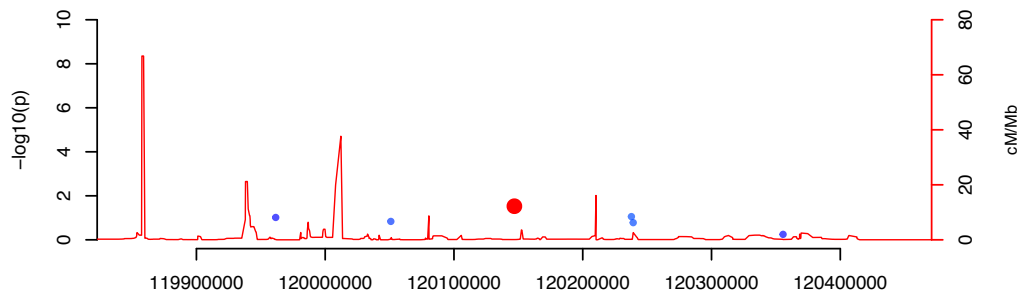
EAS: rs11064881 IBD



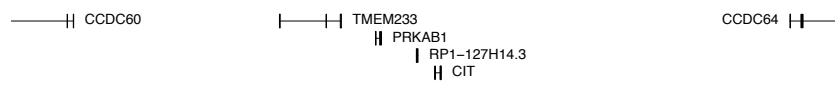
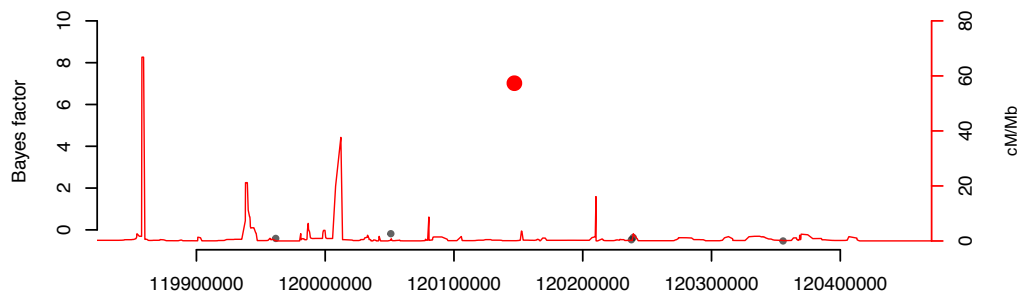
IND: rs11064881 IBD



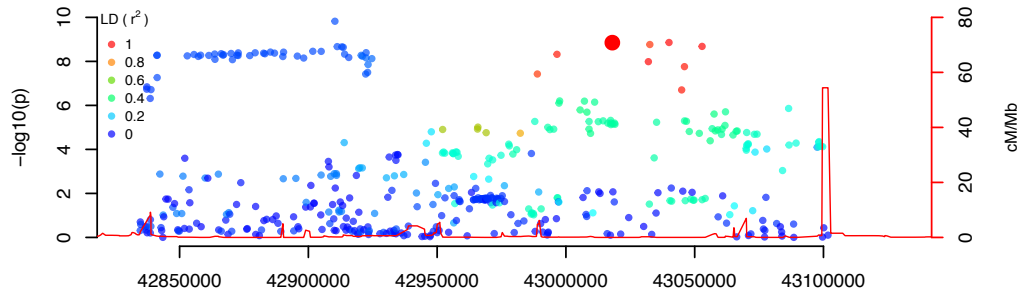
IRA: rs11064881 IBD



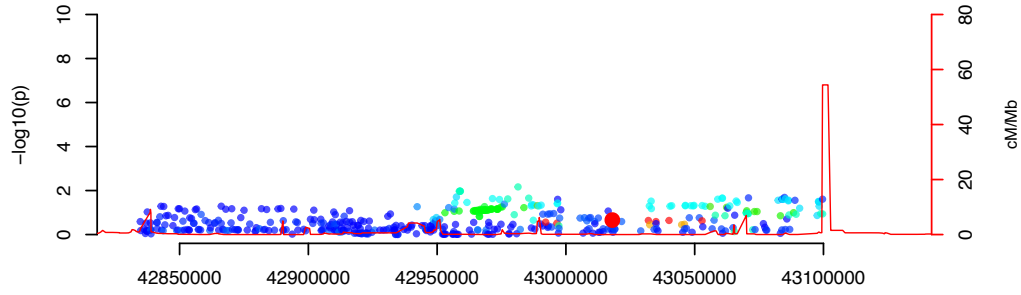
MANTRA meta-analysis: rs11064881 IBD



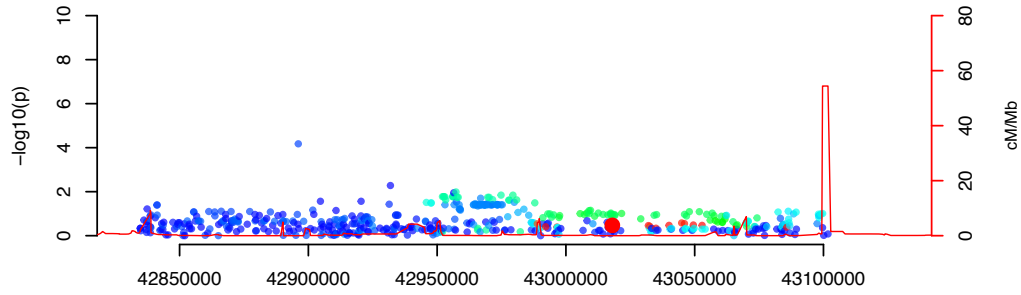
EUR: rs9525625 CD



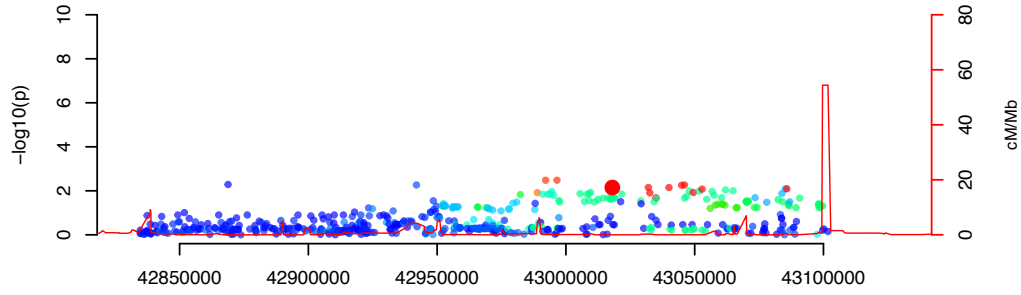
EAS: rs9525625 CD



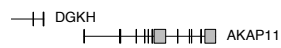
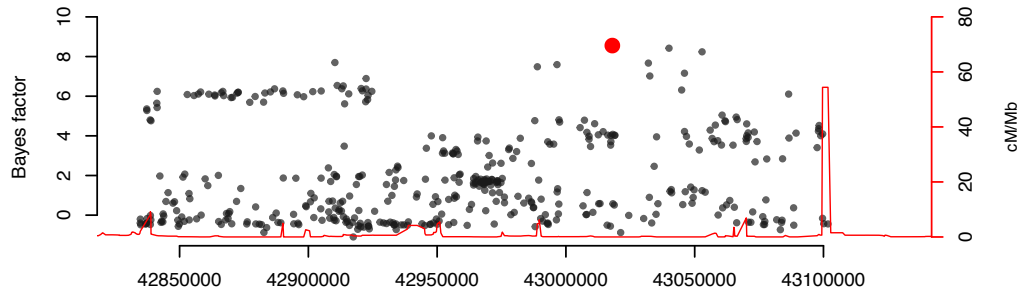
IND: rs9525625 CD



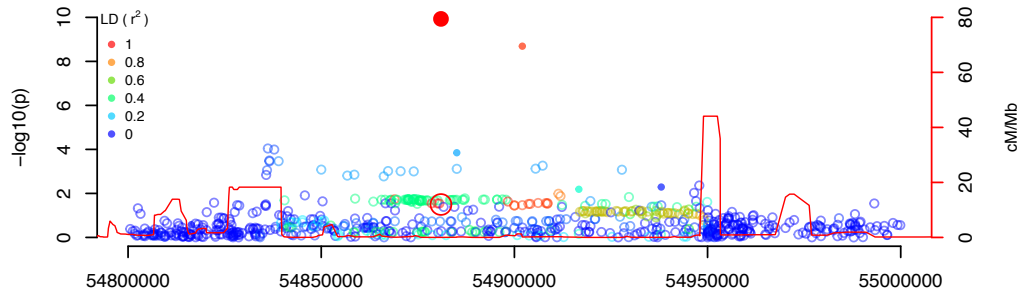
IRA: rs9525625 CD



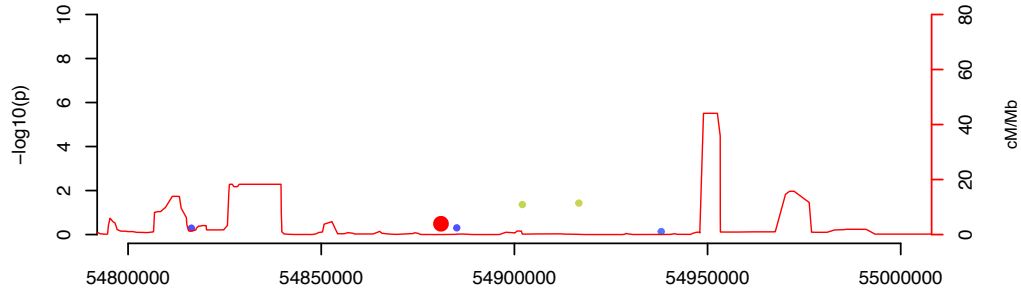
MANTRA meta-analysis: rs9525625 CD



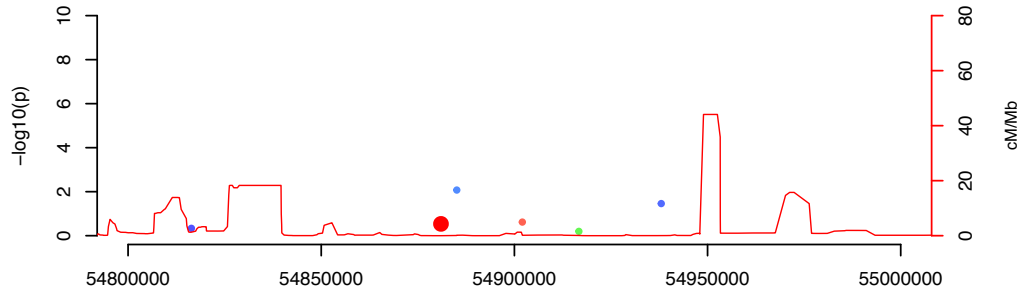
EUR: rs3853824 CD



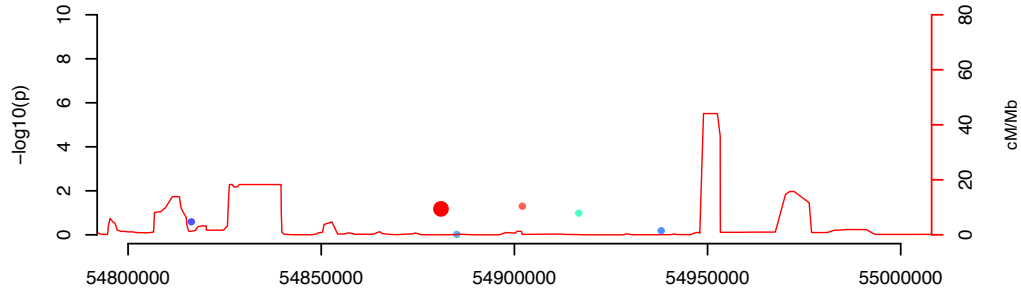
EAS: rs3853824 CD



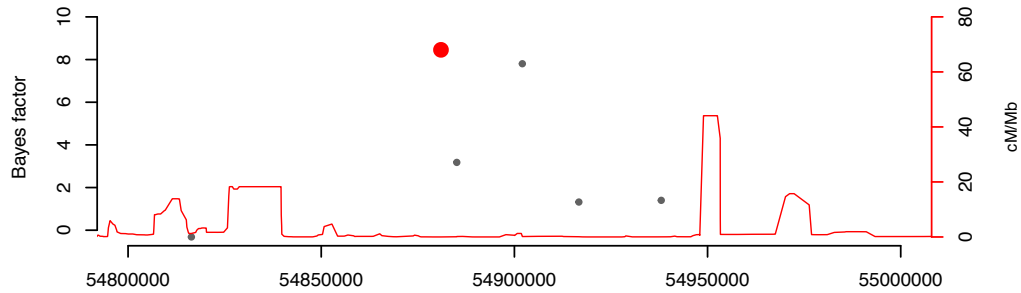
IND: rs3853824 CD



IRA: rs3853824 CD



MANTRA meta-analysis: rs3853824 CD

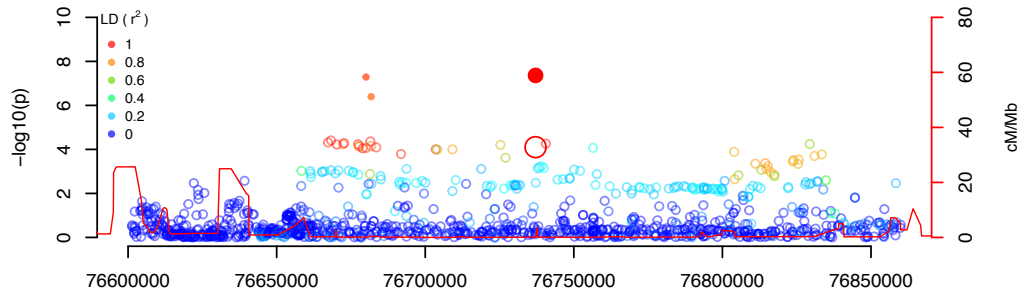


H C17orf67

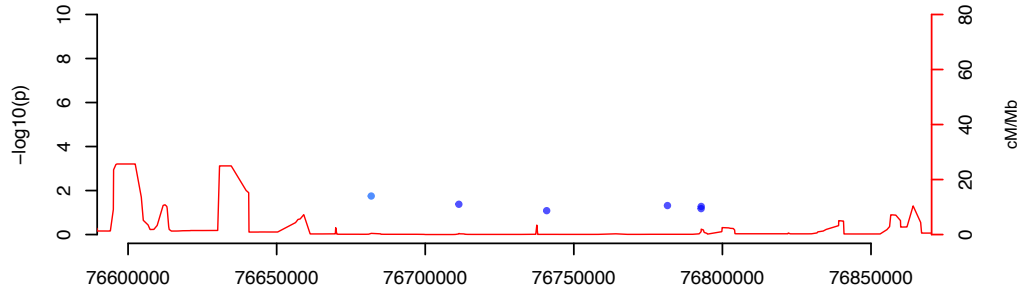
H DGKE

H TRIM25

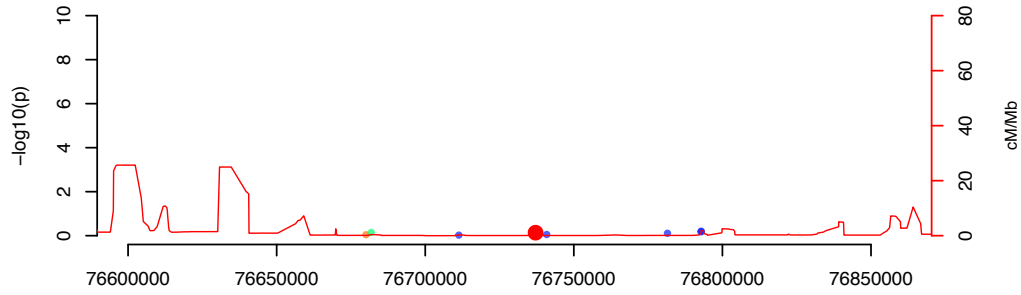
EUR: rs17736589 UC



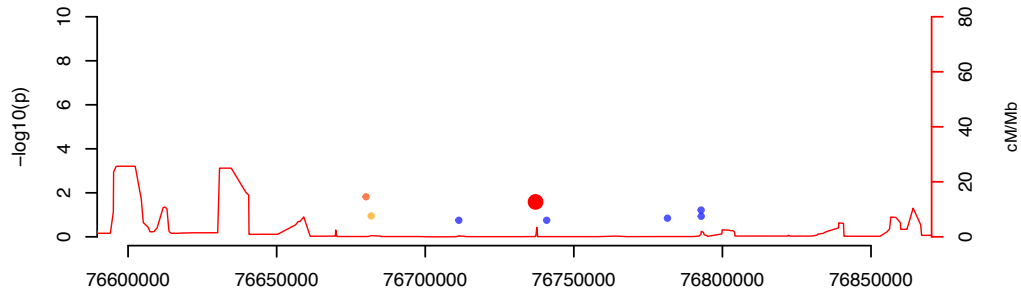
EAS: rs17736589 UC



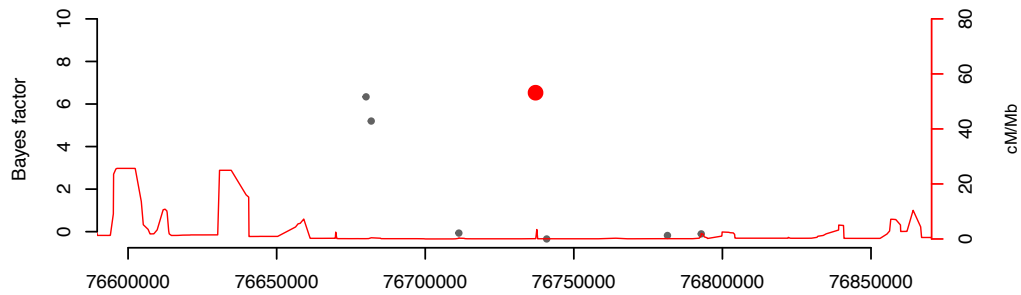
IND: rs17736589 UC



IRA: rs17736589 UC



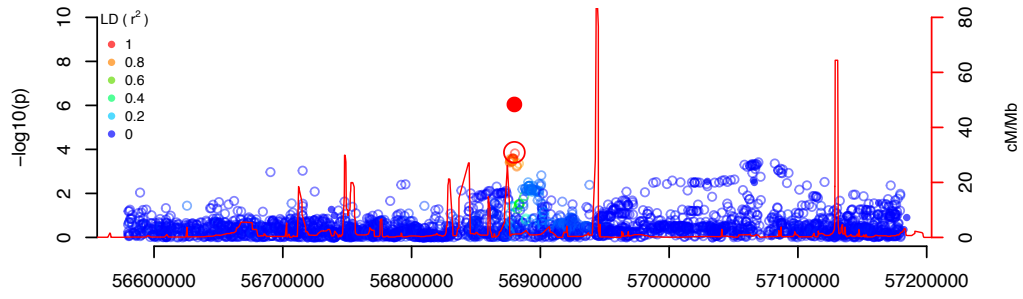
MANTRA meta-analysis: rs17736589 UC



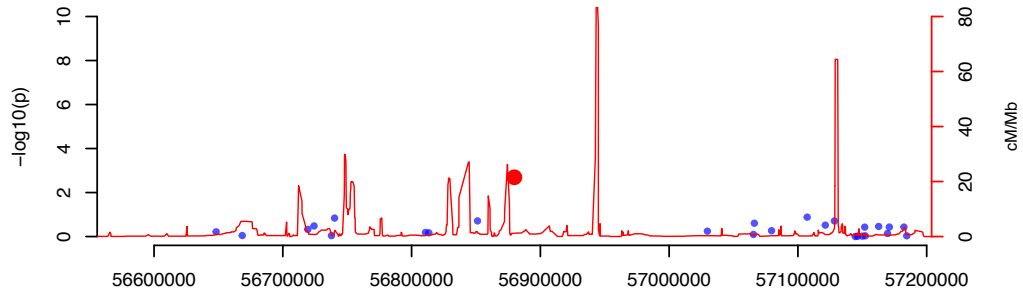
■|■|■|■|■| CYTH1

■|■|■|■| USP36  
■|■|■| TIMP2

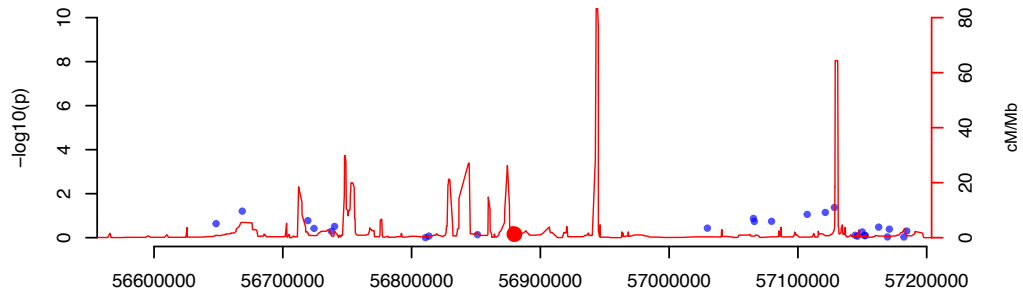
EUR: rs9319943 CD



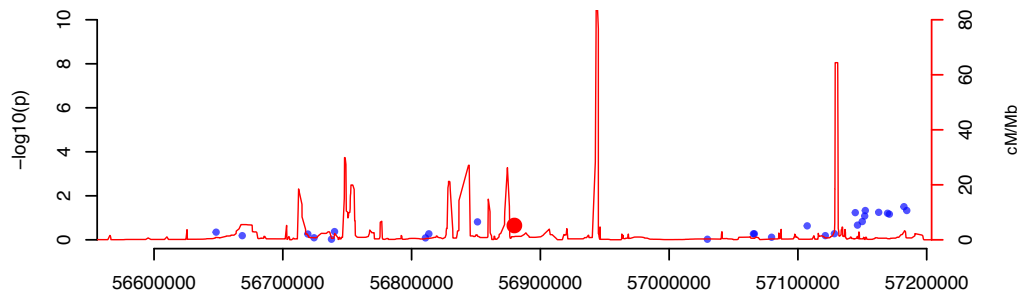
EAS: rs9319943 CD



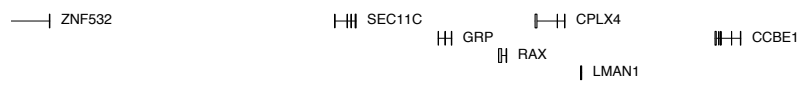
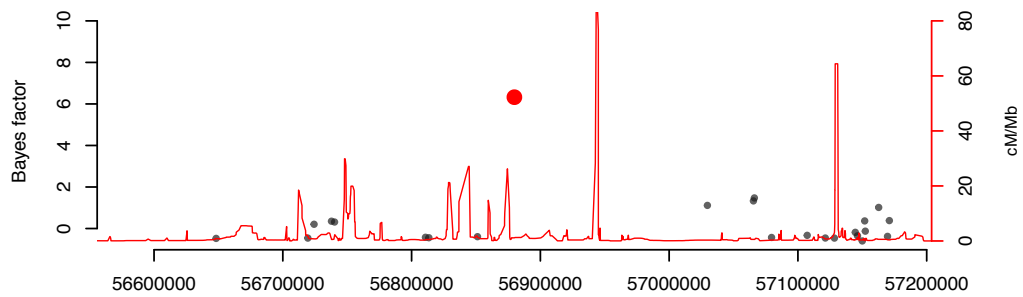
IND: rs9319943 CD



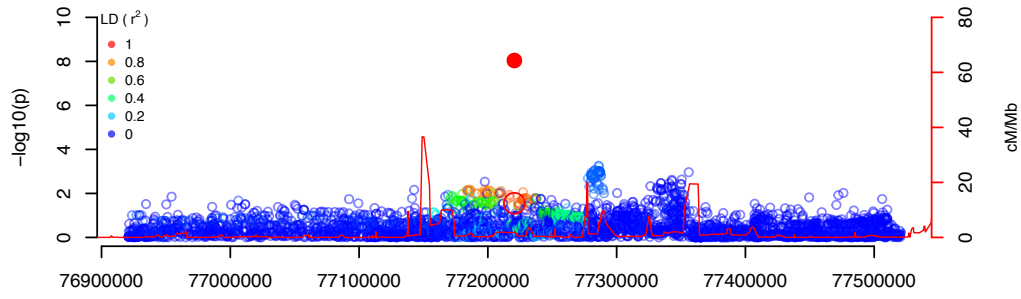
IRA: rs9319943 CD



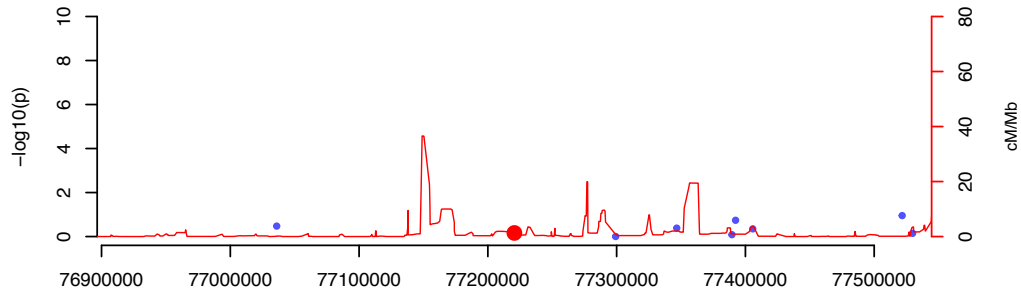
MANTRA meta-analysis: rs9319943 CD



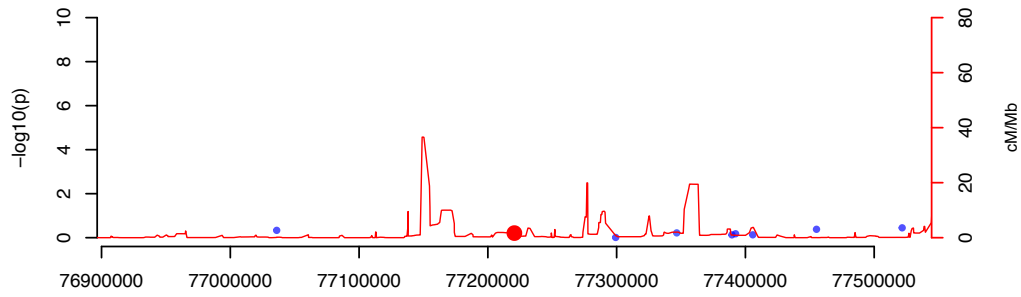
EUR: rs7236492 CD



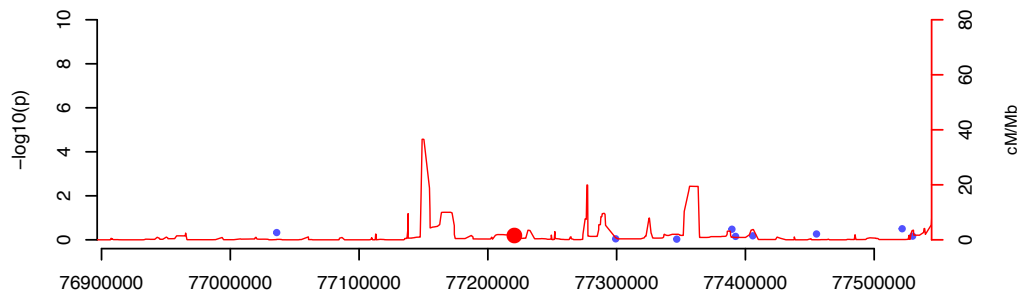
EAS: rs7236492 CD



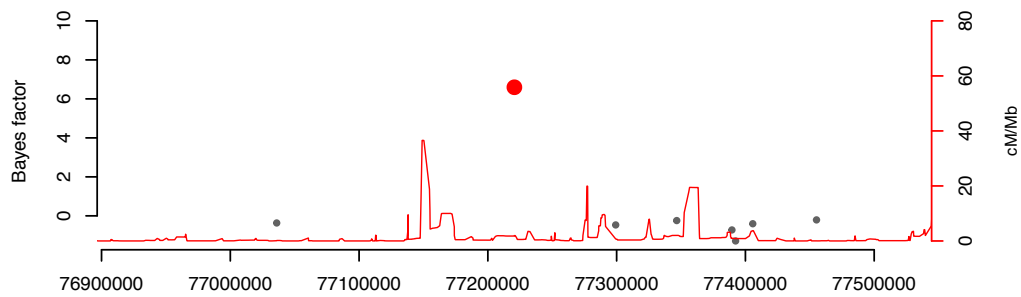
IND: rs7236492 CD



IRA: rs7236492 CD



MANTRA meta-analysis: rs7236492 CD

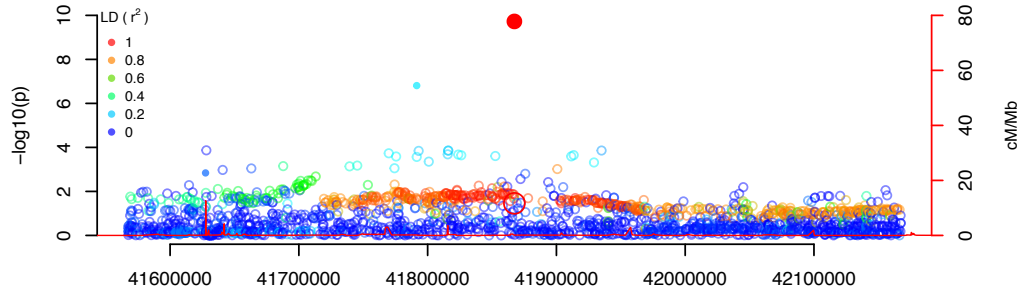


ATP9B

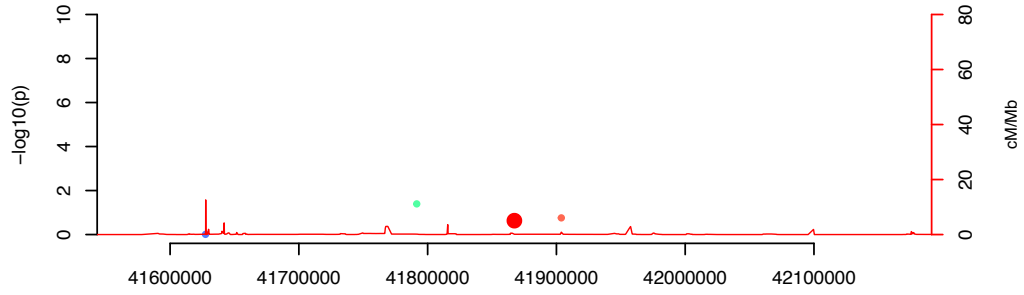
AC018445.1  
NFATC1

CTD

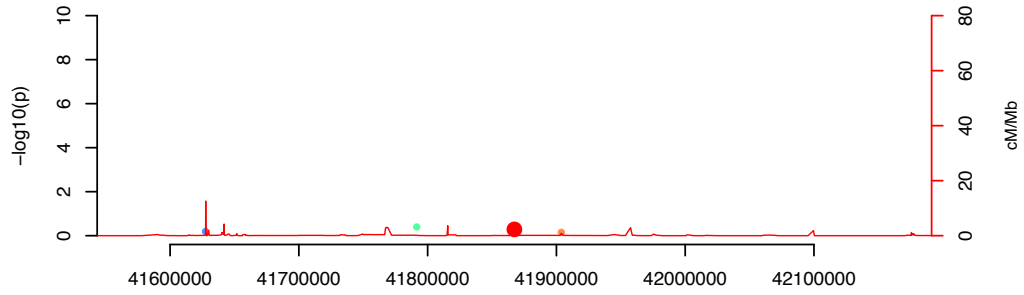
EUR: rs727563 CD



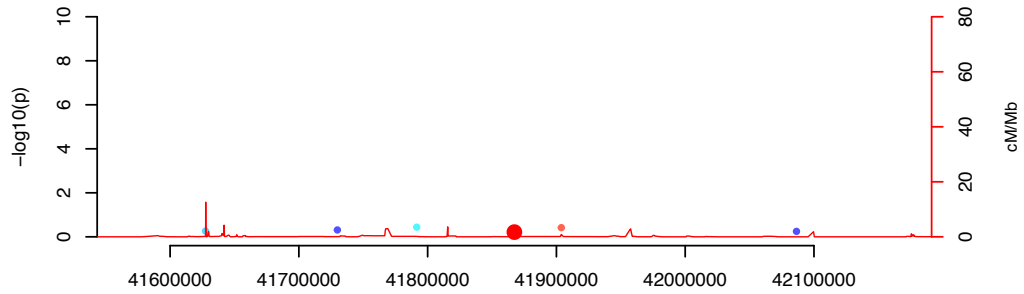
EAS: rs727563 CD



IND: rs727563 CD



IRA: rs727563 CD



MANTRA meta-analysis: rs727563 CD

