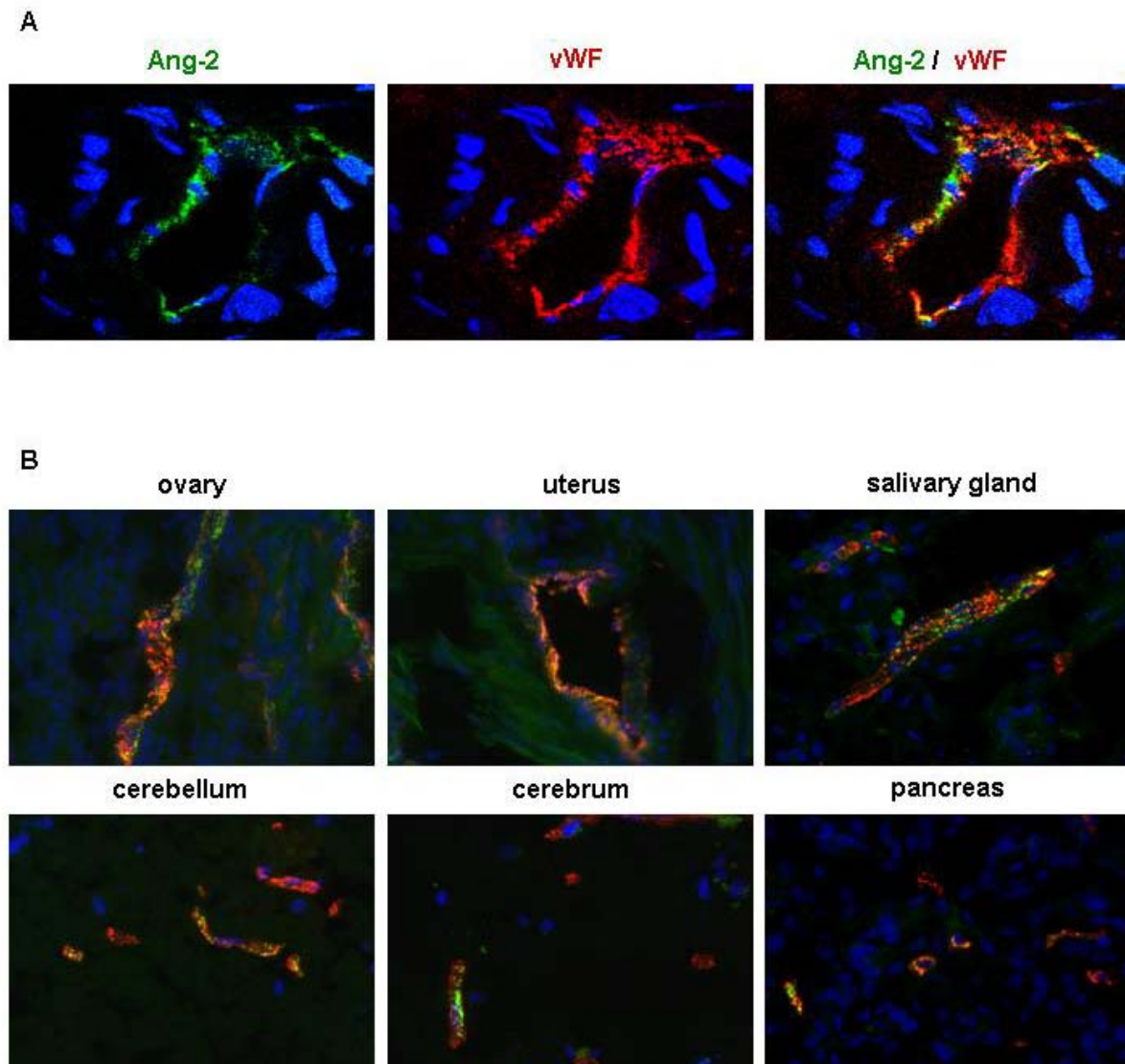


Fiedler et al.

Supplementary Figure 2



Supplementary Figure 2. Ang-2 expression and storage in human tissues. Human tissues were stained for vWF (red) and Ang-2 (green). High resolution confocal microscopy on human colon tissue reveals Ang-2 expression and storage in Weibel-Palade bodies *in vivo* (A). Furthermore, Ang-2 expression and storage was detected in all analyzed tissues (B). Yet, there is regional heterogeneity. Granular Ang-2 is detectable in most endothelial cells of the female reproductive system. Prominent expression is also detectable in the brain. Ang-2 is found in a subset of endothelial cells in most other tissues. Some tissues (e.g., skeletal muscle, cardiac muscle) contain hardly any detectable Weibel-Palade body-stored Ang-2.