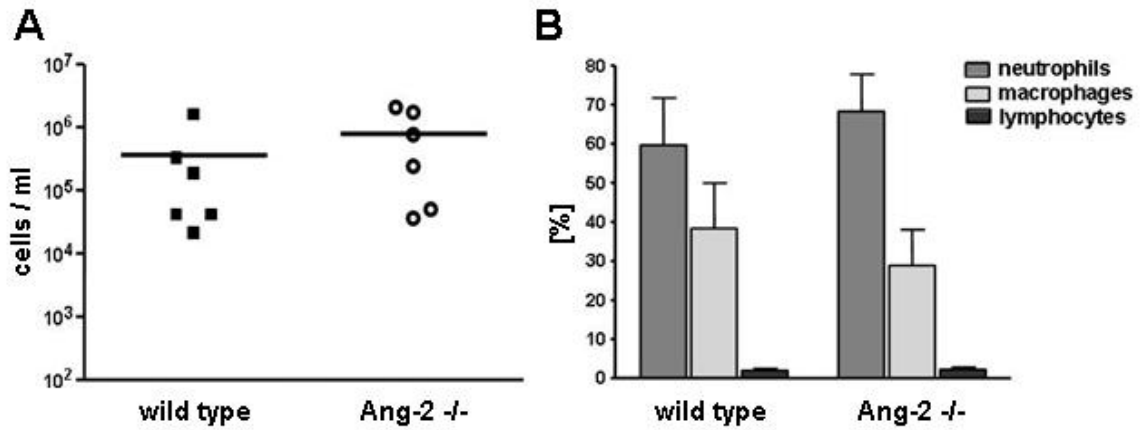


Supplementary Figure 3



Supplementary Figure 3. Analysis of cells recruited into the lung of wild type and Ang2-deficient mice after *Streptococcus pneumoniae* infection. Cells in the bronchoalveolar lavage were quantitated after 36 h of intranasal *Streptococcus pneumoniae* infection (5×10^6 cfu) (A). The composition of the individual cell types was determined by FACS analyses (B). The figure shows the results of one out of two experiments with similar results.