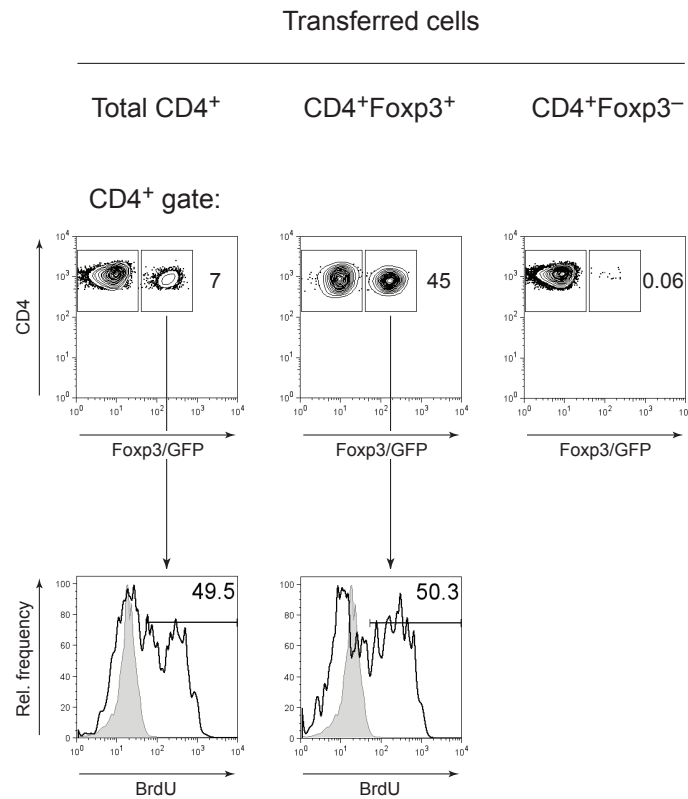


Supplementary Figure 3



Supplementary Figure 3. Natural Foxp3⁺ T-reg proliferate *in vivo*. *Rag2*^{-/-} mice received 10x10⁶ CD4⁺ T-cells (containing a fraction of 8% Foxp3⁺ cells), 1.5x10⁶ FACS-sorted CD4⁺Foxp3⁺ T-cells, or 5x10⁶ FACS-sorted CD4⁺Foxp3⁻ T-cells. After five days, the hosts were immunized with MOG₃₅₋₅₅/CFA followed by BrdU treatment. On d16 after immunization, the spleens were analyzed for Foxp3/GFP expression and BrdU incorporation. The percentage fractions in the corresponding gates are indicated. The histograms illustrate the BrdU incorporation within the CD4⁺ Foxp3/GFP⁺ gate. The shaded curves represent the CD4⁺Foxp3/GFP⁺ T-cell population recovered from a host that was not treated with BrdU (negative control).