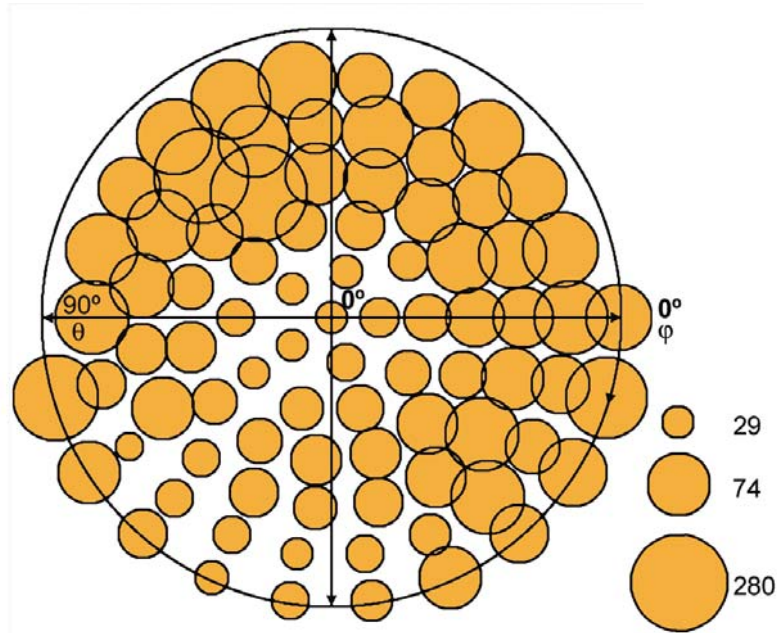
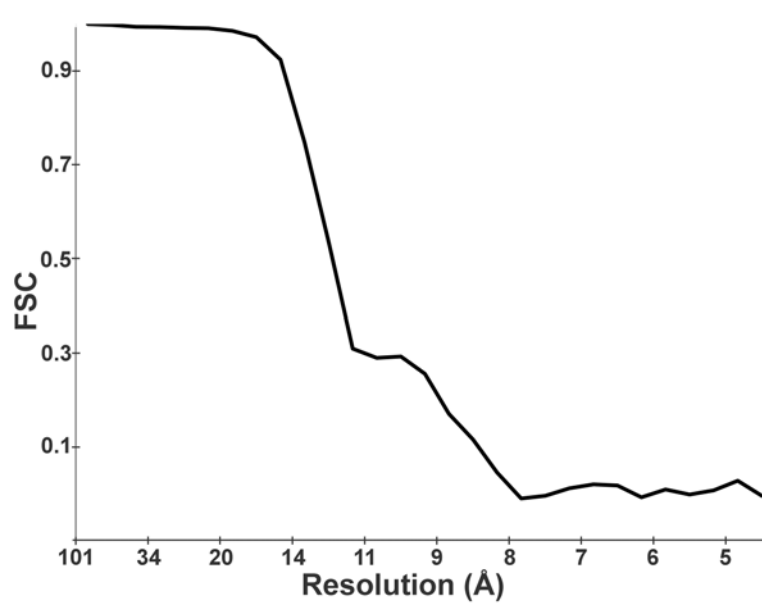


## Supplementary Figure 2.

a



b



**Supplementary Figure 2** Characteristics of final FAS reconstruction from unstained specimens. **(a)** Distribution of orientations (as a function of  $\theta$  and  $\phi$  Euler angles) for the cryo-image data set. **(b)** Fourier-Shell Correlation plot measuring the resolution of the 3-D reconstruction.