

Supplementary Figures

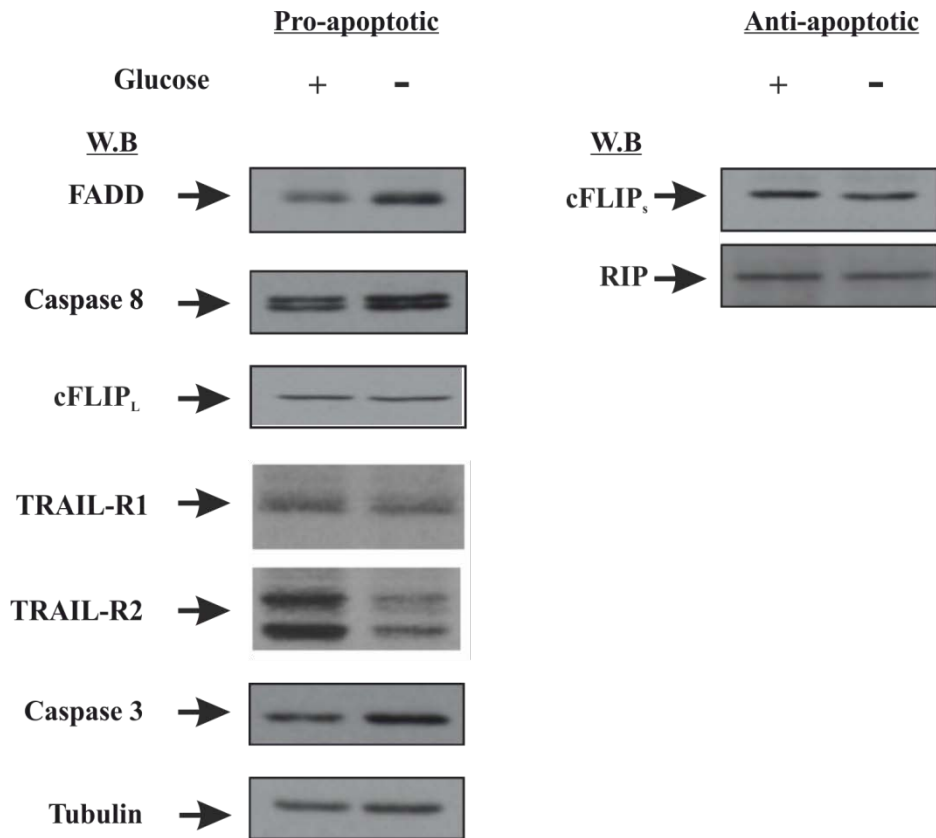


Figure S3 Protein expression levels of key pro- and anti-apoptotic proteins involved in the extrinsic cell death pathway. Whole cell lysates from Z138 cells grown in the presence (+) or absence (-) of glucose for a minimum of 1 week prepared and immunoblotted for the indicated pro- and anti-apoptotic proteins as described in Supplementary Materials and Methods. Tubulin was used as a loading control and immunoblots are representative of three independent experiments. Note that cFLIP_L is shown here as an anti-apoptotic protein but in certain tumor cell lines and cellular contexts this may not be the case.