

Supplementary Figures

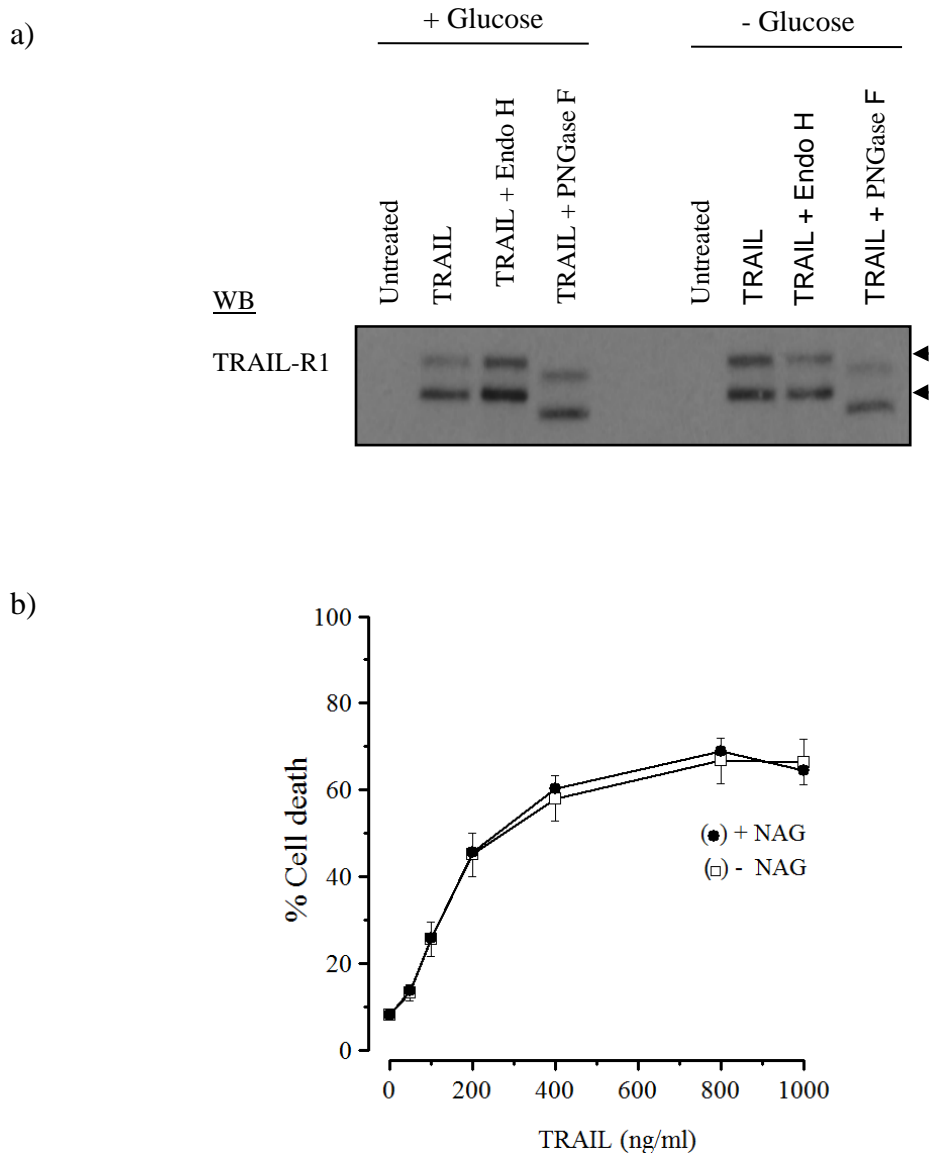


Figure S4 Glycosylation of TRAIL –R1 in Z138 cells is maintained when cells are grown under in glucose-free conditions. a) TRAIL-R1 DISC was isolated from Z138 cells grown with or without glucose and and treated with the endoglycosidase enzymes, Endo H (cleaves oligomannose and hybrid glycans) and PNGase F (cleaves linker between core GlcNaAc and asparagine residues) as described in Supplementary Materials and Methods. Immunoblots are representative of three independent experiments. Position of glycosylated TRAIL-R1 proteins is indicated with arrows. b) Glucose-free grown Z138 cells were pre-incubated with (●) or without (□) N-acetylglucosamine (NAG) for 2 h followed by 4 h with various concentrations of TRAIL (0-1000 ng/ml) and assessed for cell death as described in Supplementary Methods. Data for –NAG is average of two experiments and + NAG is mean \pm SEM (n =3).