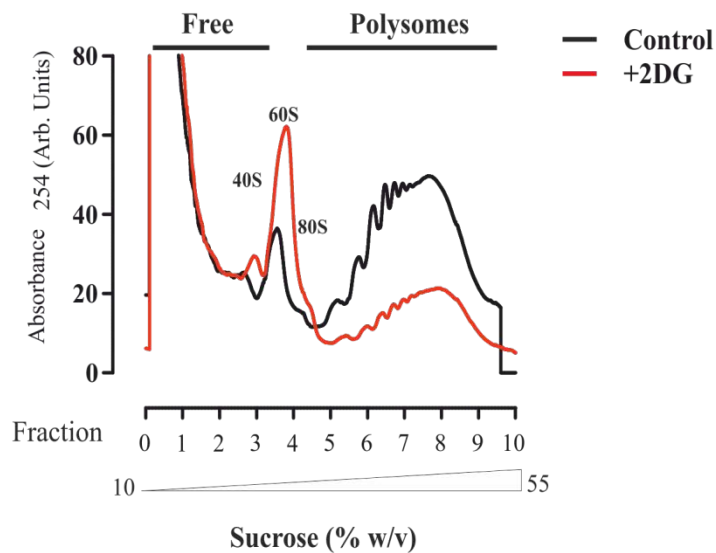


Supplementary Figures

a) Translational profiling of 2DG treated cells



b) mRNA profiling of Z138 cells grown in absence of glucose

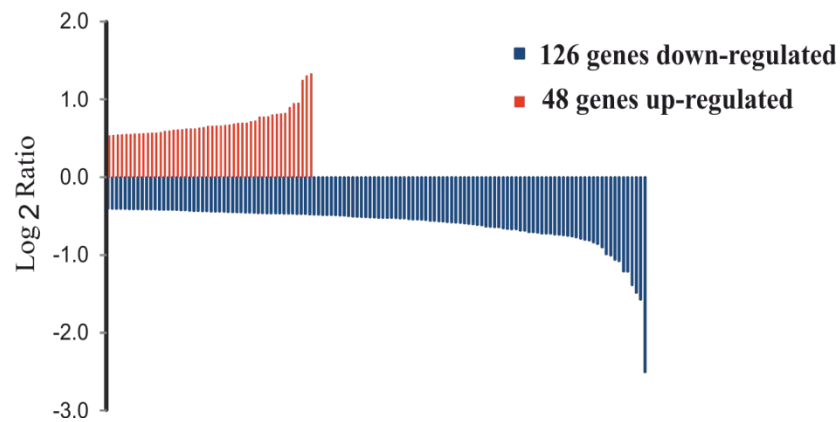


Figure S6 Translational and transcriptional effects of 2DG and glucose deprivation on Z138 cells. a) Translational profiling was performed on Z138 cells treated with (red line) and without (black line) 5 mM 2DG for 20 h as described in the Supplementary Material and Methods. Cellular extracts were separated on sucrose density gradients as described in Supplementary Material and Methods. The absorbance profile for the gradient is shown along with indicated position of free 40S and 60S monosomes, and polysomes. In b) Z138 cells were cultured for a minimum of 1 week in plus and minus glucose media as described in Figure 2. Microarray analysis of plus and minus maintained cells was carried out and analysed as described in Supplementary Materials and Methods.