

In the format provided by the authors and unedited.

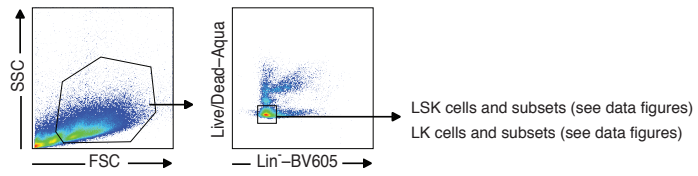
Microbial signals drive pre-leukaemic myeloproliferation in a *Tet2*-deficient host

Marlies Meisel^{1,2,15}, Reinhard Hinterleitner^{1,2,15}, Alain Pacis^{3,4}, Li Chen^{1,2}, Zachary M. Earley^{1,2}, Toufic Mayassi^{1,2}, Joseph F. Pierre^{1,5}, Jordan D. Ernest^{1,2}, Heather J. Galipeau⁶, Nikolaus Thuille⁷, Romain Bouziat^{1,2}, Manuel Buscarlet⁸, Daina L. Ringus¹, Yitang Wang⁹, Ye Li⁹, Vu Dinh^{1,2}, Sangman M. Kim^{1,2}, Benjamin D. McDonald^{1,9}, Matthew A. Zurenski^{1,2}, Mark W. Musch¹, Glaucia C. Furtado¹⁰, Sergio A. Lira¹⁰, Gottfried Baier⁷, Eugene B. Chang¹, A. Murat Eren^{1,11}, Christopher R. Weber⁹, Lambert Busque^{8,12}, Lucy A. Godley^{1,13}, Elena F. Verdú⁶, Luis B. Barreiro^{3,14} & Bana Jabri^{1,2,9*}

¹Department of Medicine, University of Chicago, Chicago, IL, USA. ²Committee on Immunology, University of Chicago, Chicago, IL, USA. ³Department of Genetics, CHU Sainte-Justine Research Center, Montreal, Quebec, Canada. ⁴Department of Biochemistry, Faculty of Medicine, Université de Montréal, Montreal, Quebec, Canada. ⁵Department of Pediatrics, University of Tennessee Health Science Center, Memphis, TN, USA. ⁶Farncombe Family Digestive Health Research Institute, McMaster University, Hamilton, Ontario, Canada. ⁷Translational Cell Genetics, Department for Pharmacology and Genetics, Medical University of Innsbruck, Innsbruck, Austria. ⁸Research Centre, Hôpital Maisonneuve-Rosemont, Montreal, Quebec, Canada. ⁹Department of Pathology and Pediatrics, University of Chicago, Chicago, IL, USA. ¹⁰Immunology Institute, Icahn School of Medicine at Mount Sinai, New York, NY, USA. ¹¹Marine Biological Laboratory, Woods Hole, MA, USA. ¹²Hematology Division, Hôpital Maisonneuve-Rosemont, Université de Montréal, Montreal, Quebec, Canada. ¹³Section of Hematology/Oncology, University of Chicago, Chicago, IL, USA. ¹⁴Department of Pediatrics, Faculty of Medicine, Université de Montréal, Montreal, Quebec, Canada. ¹⁵These authors contributed equally: Marlies Meisel, Reinhard Hinterleitner. *e-mail: bjabri@bsd.uchicago.edu

Supplementary Figure 1

a HSC gating (post lineage depletion)



b Myeloid cell gating (same for blood and spleen)

