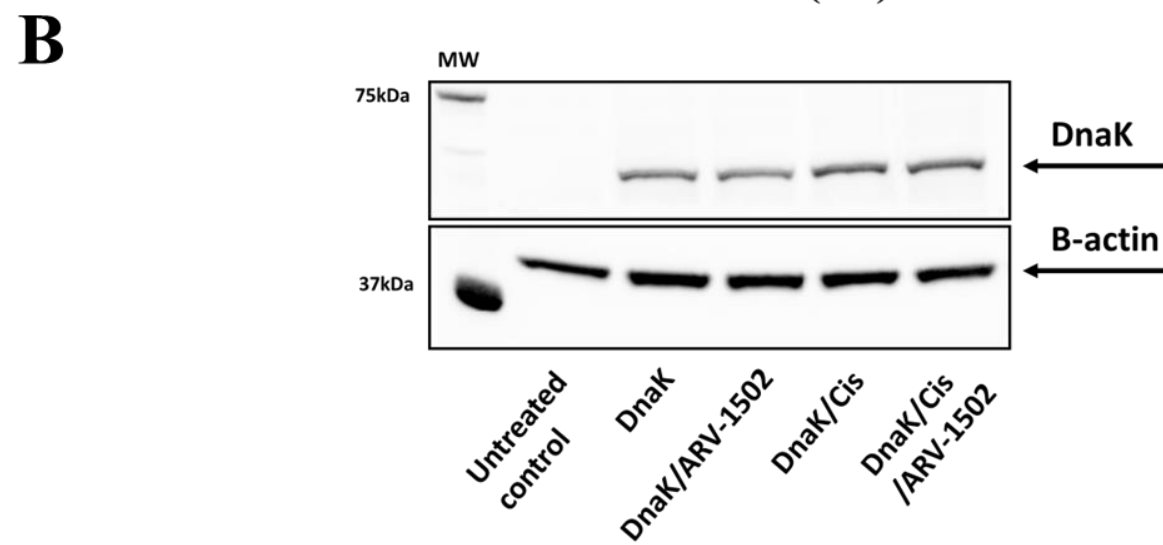
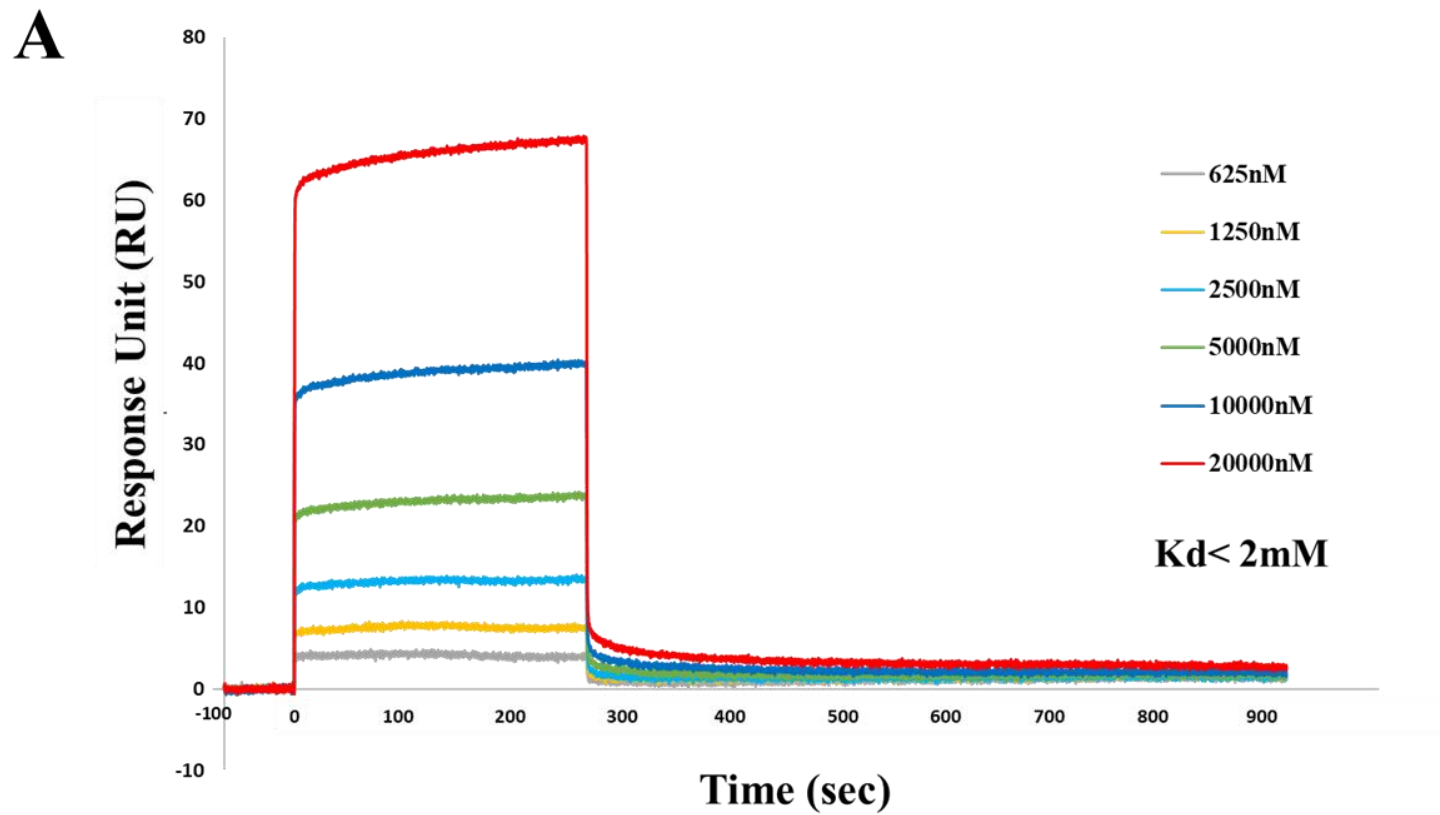


Fig.S1



**Fig.S1 A) Direct binding of eM-DnaK to ARV-1502 as determined by surface plasmon resonance (SPR).** Association of ARV-1502 at different concentrations on 2274.9 response units of eM-DnaK immobilized on a CM5 biosensor chip proceeded at a flow rate of 35  $\mu$ l/min for 250 sec, followed by a 600 sec dissociation in HBS-EP. A preliminary kinetic analysis yielded a Kd value of  $1.899e^{-6}$ M. **B) ARV-1502 binds to eM-DnaK and does not prevent eM-DnaK entry into HCT116 cells.** eM-DnaK was incubated for 3 hours with ARV-1502 and then added to HCT116 cells. After 24 hours of incubation cells were treated for 48 hours with cisplatin. Western blotting analysis shows that eM-DnaK is able to enter into HCT116 cell line despite the binding of ARV-1502 to DnaK and the treatment with cisplatin. Cells not treated with eM-DnaK, ARV-1502 and cisplatin were used as control.