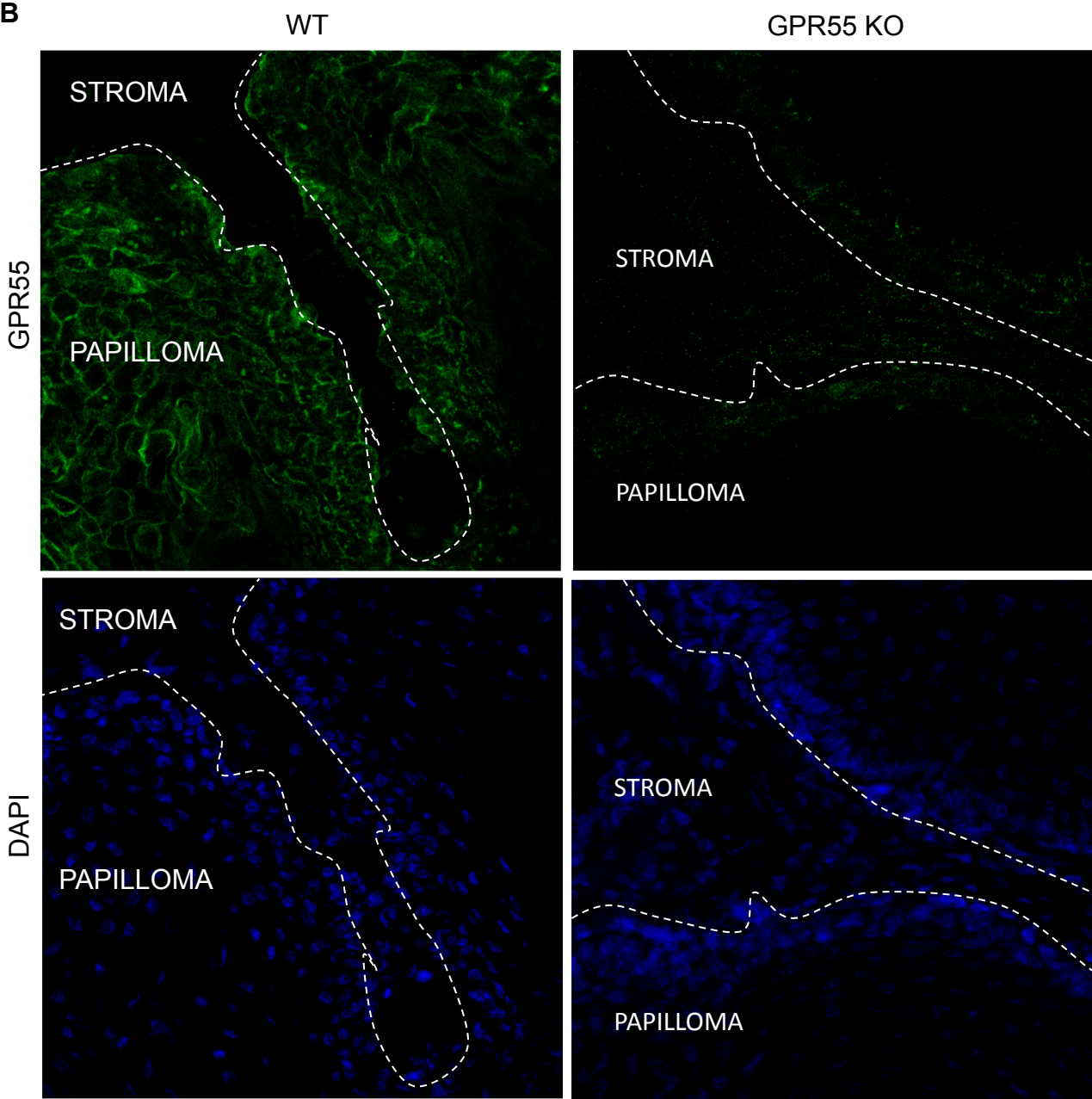
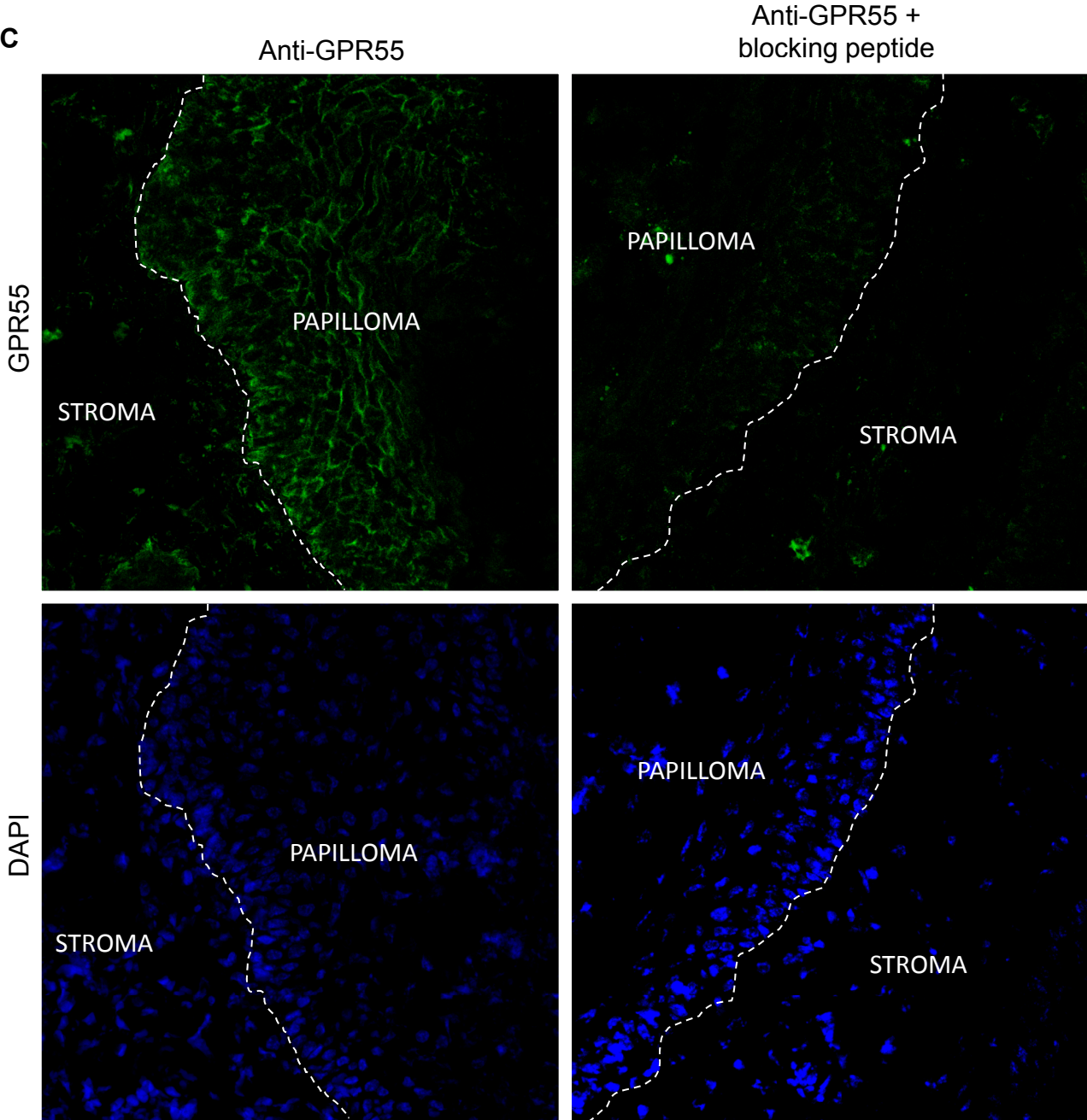


Immunohistochemical staining of GPR55 in papillomas generated in the skin of wild type (WT) and GPR55-deficient (GPR55 KO) mice. GPR55 appears in brown and cell nuclei in blue.



Immunofluorescence staining of GPR55 in papillomas generated in the skin of wild type (WT) and GPR55-deficient (GPR55 KO) mice. GPR55 appears in green and cell nuclei in blue.



Immunofluorescence staining of GPR55 in a papilloma generated in the skin of a wild type mouse. Left panels, sections were incubated with anti-GPR55 antibody. Right panels, sections were incubated with the anti-GPR55 antibody preincubated with the corresponding blocking peptide. GPR55 appears in green and cell nuclei in blue.