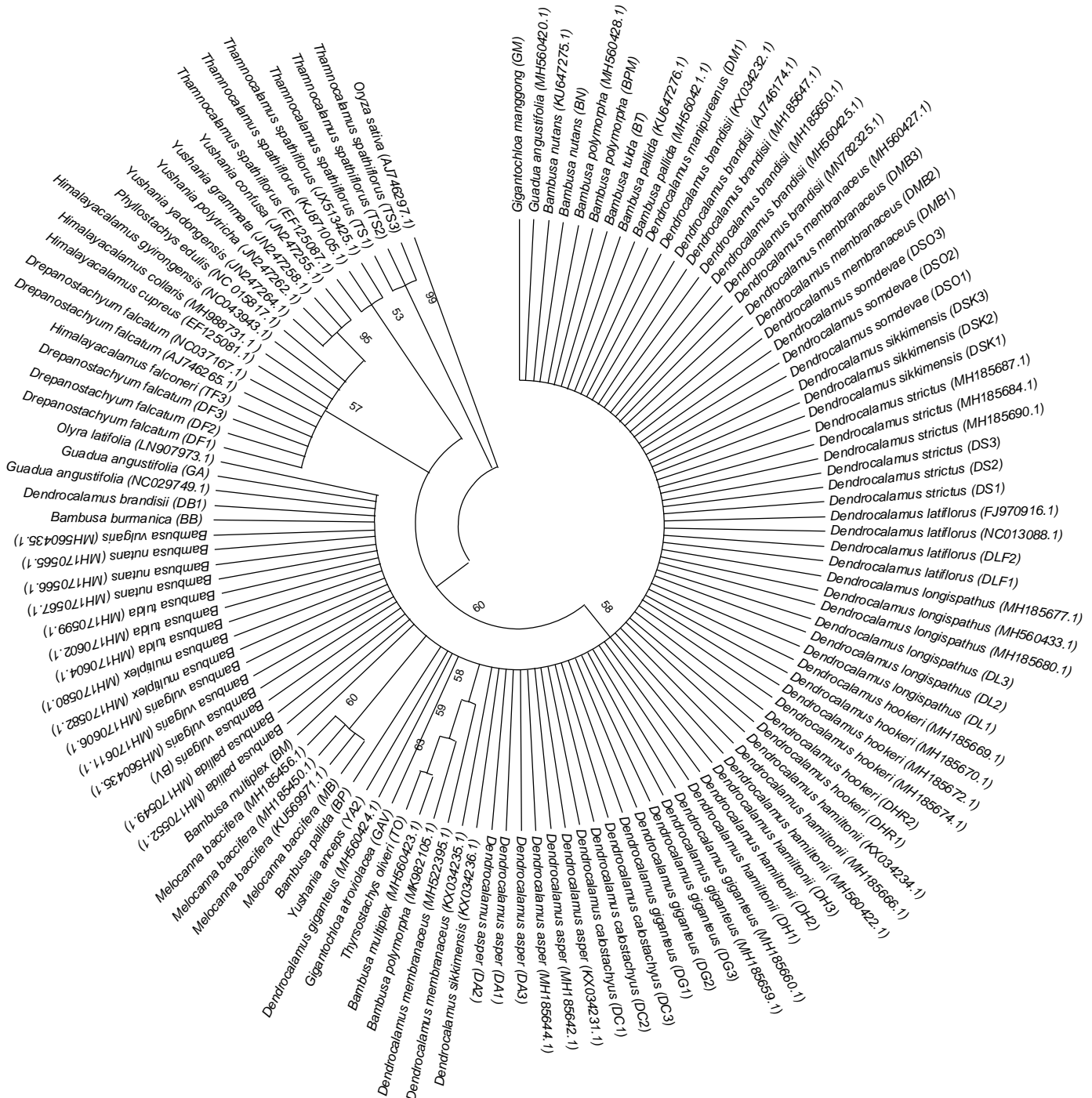
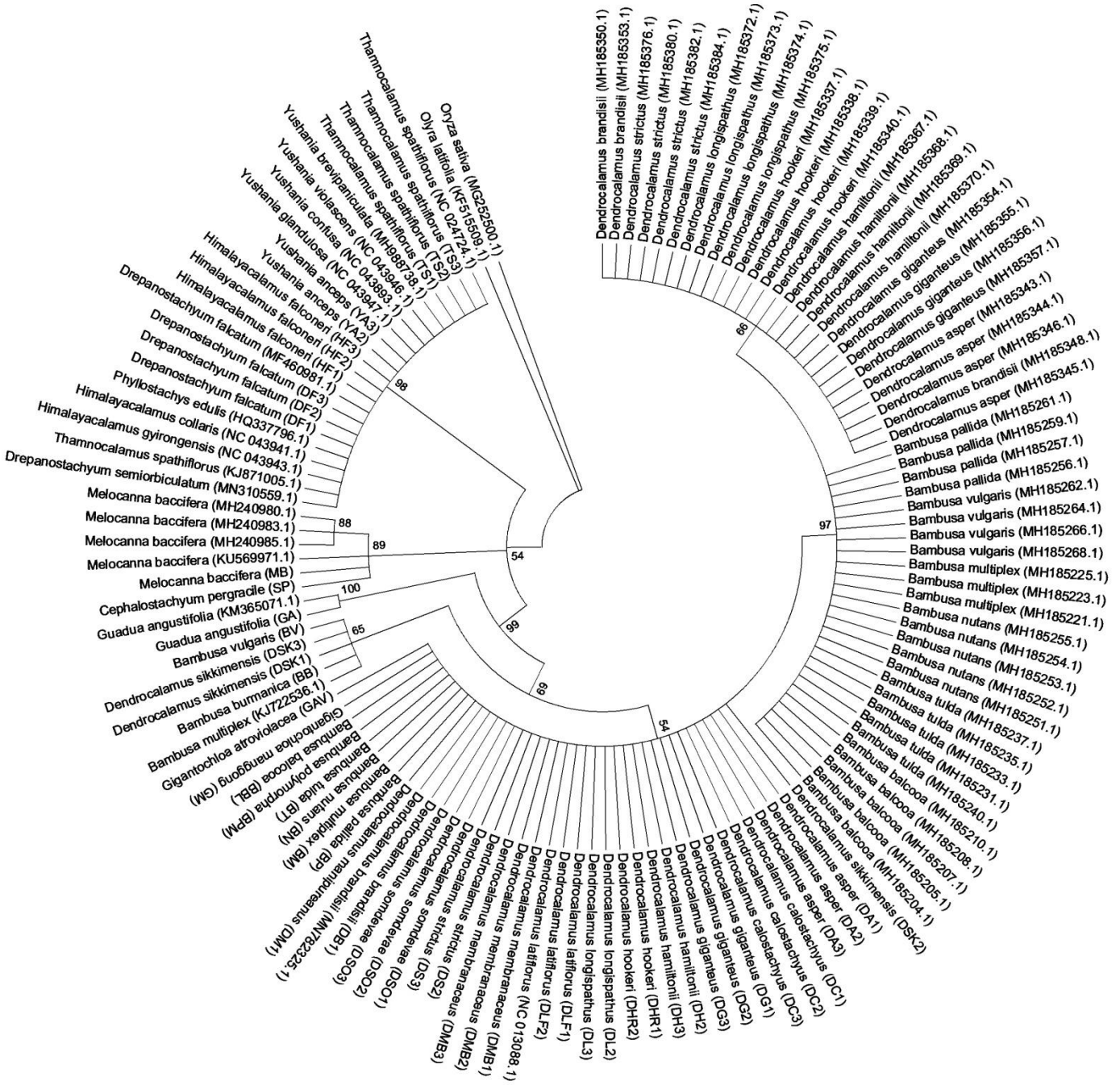


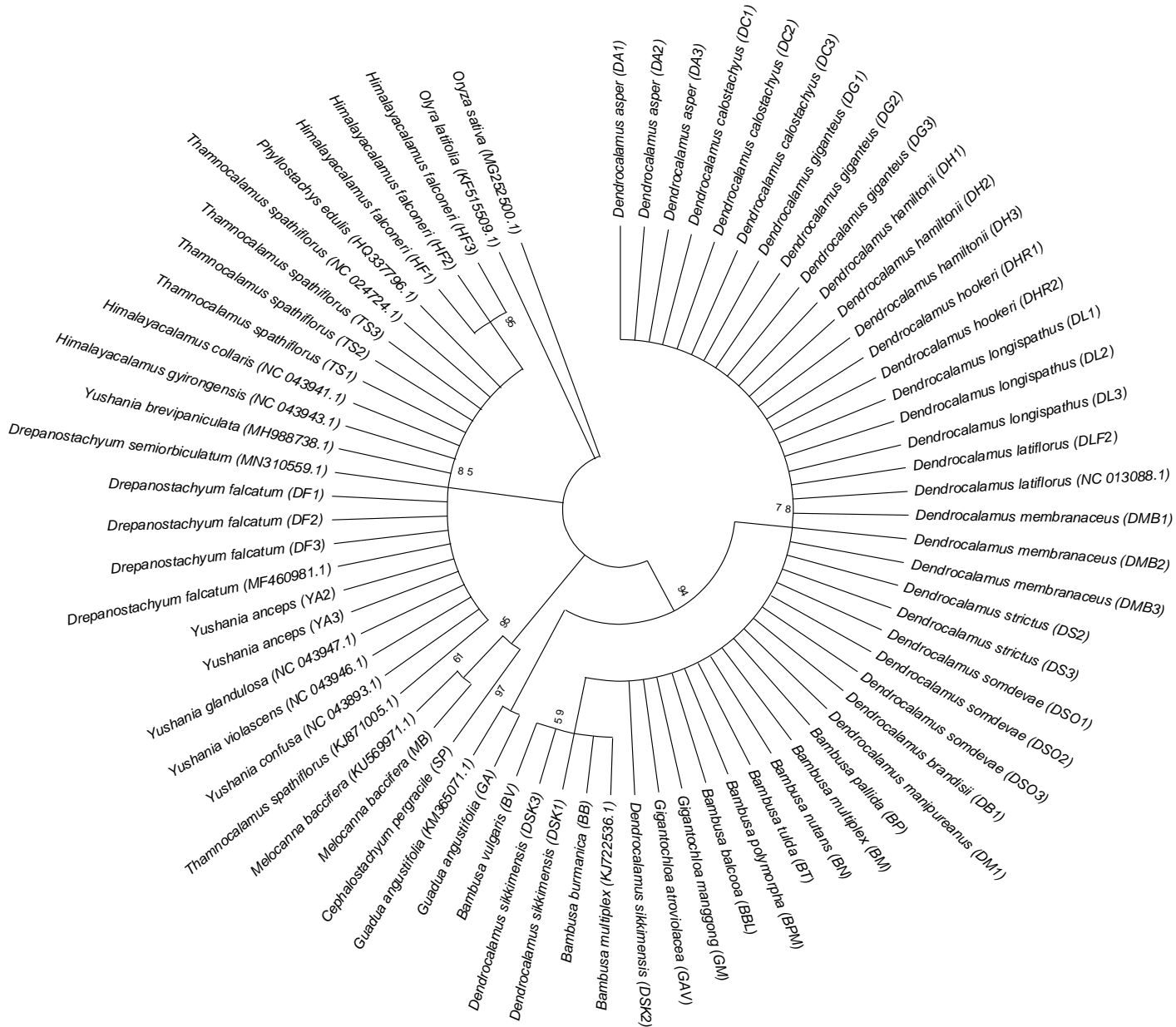
Supplementary Figure 1: Maximum likelihood tree based on the *rbcL* region using Tamura-Nei model. Bootstrap values (>50) are shown above the relevant branches.



Supplementary Figure 2a: Maximum likelihood tree based on the *psbK-I* with all database sequences using Tamura-Nei model. Bootstrap values (>50) are shown above the relevant branches.



Supplementary Figure 2b: Maximum likelihood tree based on the *psbK-I* region after removal of problematic database sequences using Tamura-Nei model. Bootstrap values (>50) are shown above the relevant branches.





Supplementary Figure 4: Maximum likelihood tree based on the four-locus combination (*matK+rbcL+psbK-I+rps16-trnQ*) using Tamura-Nei model. Bootstrap values (>50) are shown above the relevant branches.

