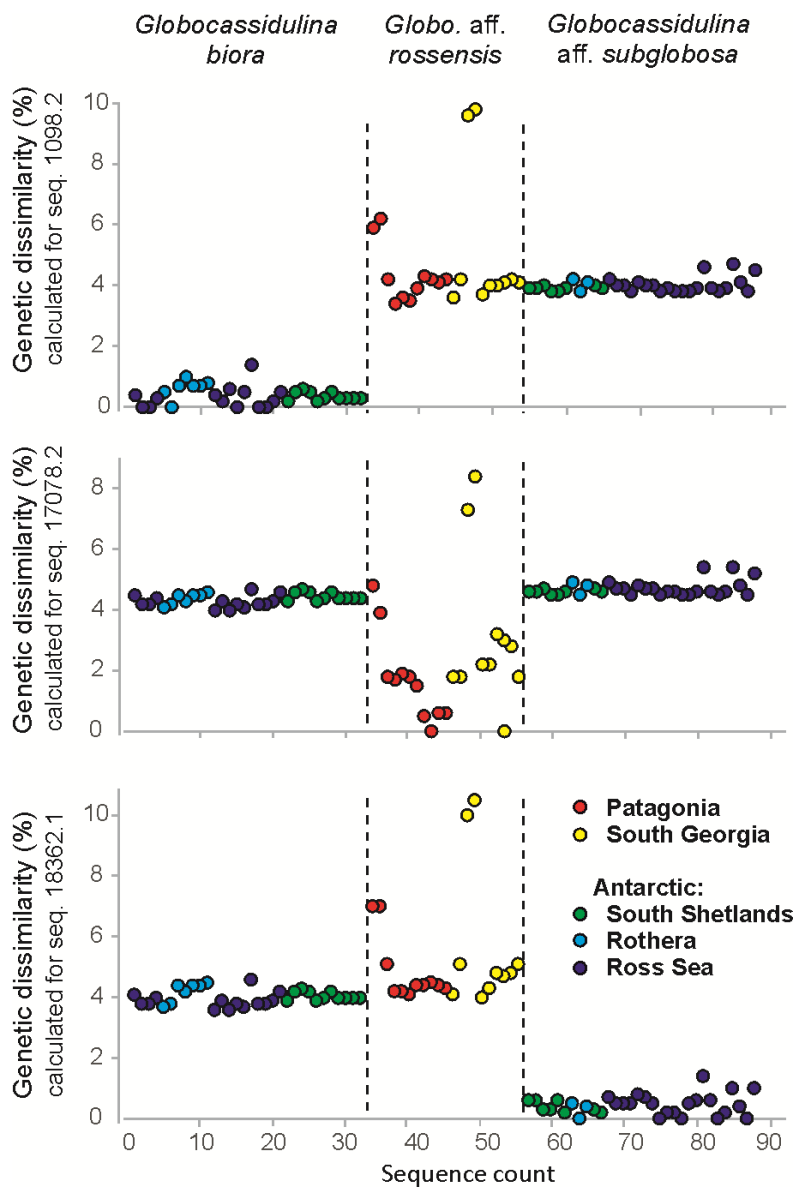
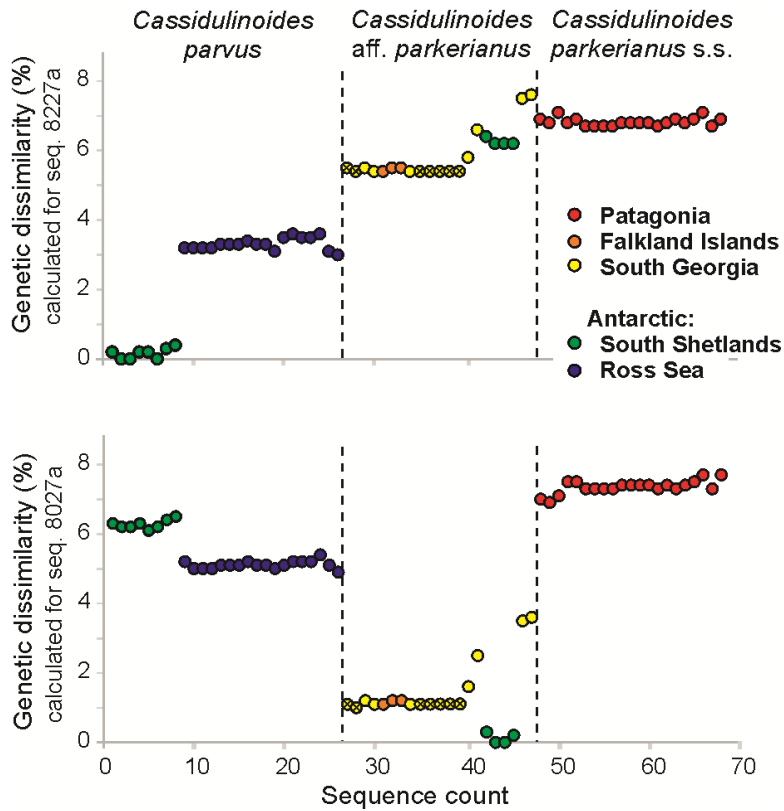


Appendix 5. Genetic dissimilarity.



Genetic dissimilarity between different species of Southern Ocean *Globocassidulina* calculated for the most common/centrally located sequences in the haplotype networks shown on Fig. 4. Different colors represent different locations.



Genetic dissimilarity between different species of Southern Ocean *Cassidulinoides* calculated for the most common/centrally located sequences from Admiralty Bay (South Shetlands) in the haplotype networks shown on Fig 5. Different colors represent different locations. Crossed yellow circles indicate data obtained from the smoothly-walled, subdominant morphotype of *C. aff. parkerianus* from South Georgia.