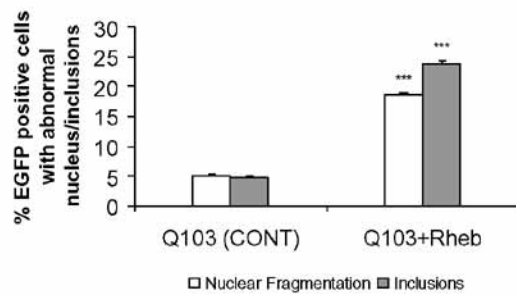
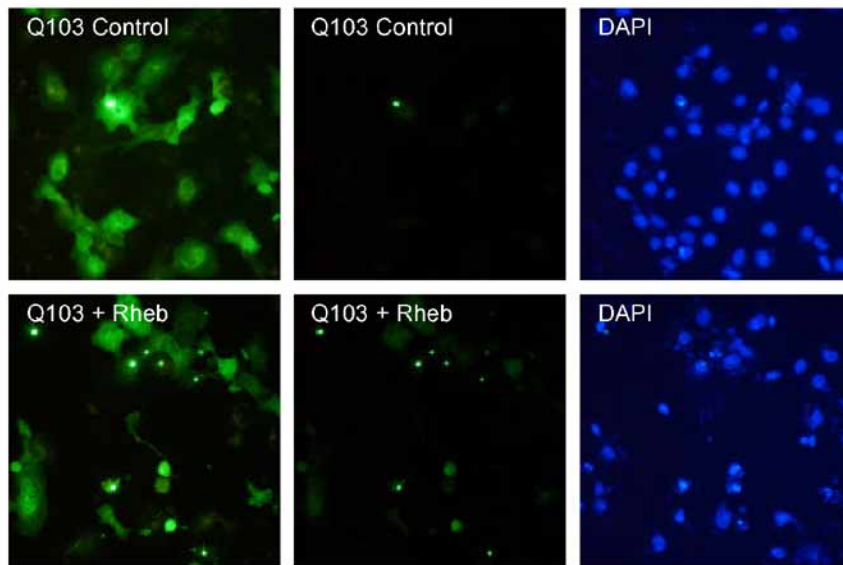


Figure 10



Supplementary figure 10

Rheb overexpression increases Q103 aggregation and toxicity.

COS-7 cells were cotransfected with mammalian expression vector encoding Rheb (or empty vector control) and Q103 for 48 hours. A 3:1 mass ratio of rheb (or empty vector)/huntingtin DNA was used. The percentages of EGFP-positive cells with aggregates or apoptotic nuclear morphology are dramatically increased with Rheb overexpression (Q103+Rheb). Q103 cells (green) without rheb (Q103 Control) or with rheb (Q103+Rheb) are shown. The middle panels show images captured at the same comparatively low gain in order to clearly distinguish aggregates from soluble EGFP. To show that the effect shown in these middle panels is not due to loss of cells, these same fields were captured at a similar higher gain to give an indication of the total number of EGFP-positive cells in the field (left most panels). Nuclear staining with DAPI (blue) is shown in the right-most panels. ***: $P < 0.0001$. Data show SEs for triplicate experiment.