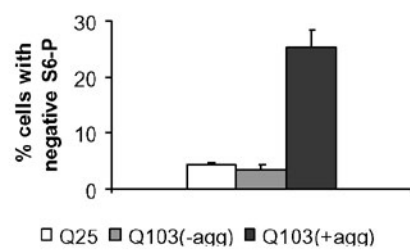
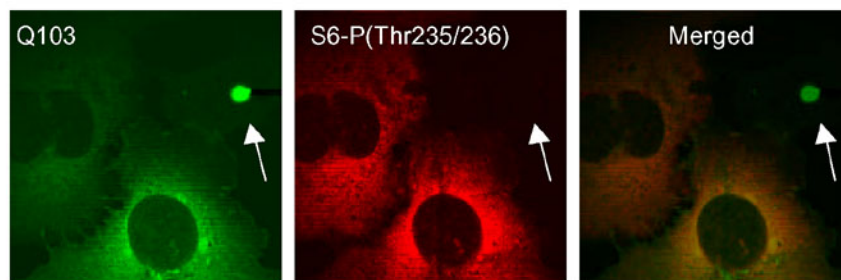


Figure 3



Supplementary figure 3

Q103 cells with aggregates have decreased phospho-S6 immunoactivity.

COS-7 cells transiently transfected with huntingtin exon-1 constructs with 25 (Q25) or 103(Q103) glutamine repeats (green) were labelled for phospho-S6 (Ser 235/236; red). Cell expressing Q103 with aggregate showed negative staining for phospho-S6 (arrow). Wild-type and mutant cells with (+agg) and without (-agg) aggregates were scored for negative phospho-S6 staining and showed that a significant proportion of mutant cells with aggregates stained negative for phospho-S6.