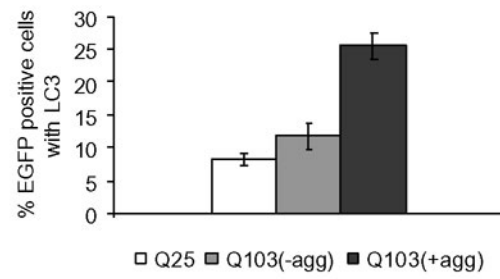
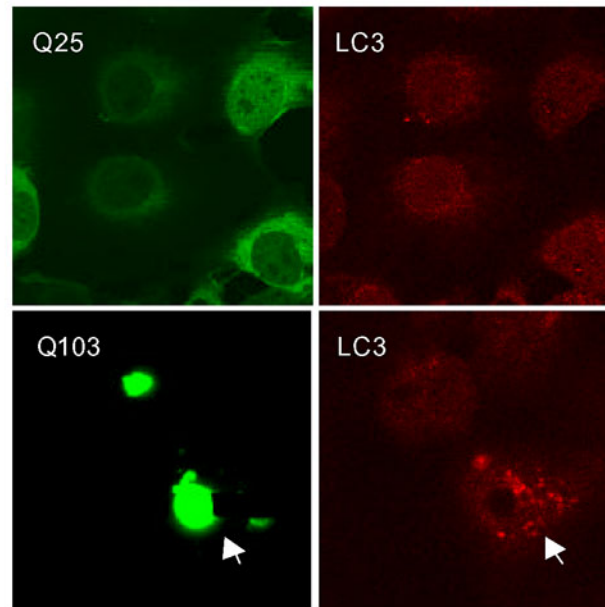


Figure 6



Supplementary figure 6

Cells with Q103 aggregates show increased autophagy.

Immunofluorescence analysis of COS-7 cells expressing Q25 (top panel) or Q103 (middle panel) with anti-LC3 antibody shows increased autophagic vacuoles in Q103 expressing cells with aggregates (bottom). Data were analysed with ANOVA. In each case, there was no significant difference between wild-type cells and cells expressing the mutant protein without aggregates, but there was a significant difference ($p < 0.005$) between wild-type cells and mutant cells with aggregates or between cells expressing the mutant protein without aggregates and mutant cells with aggregates.