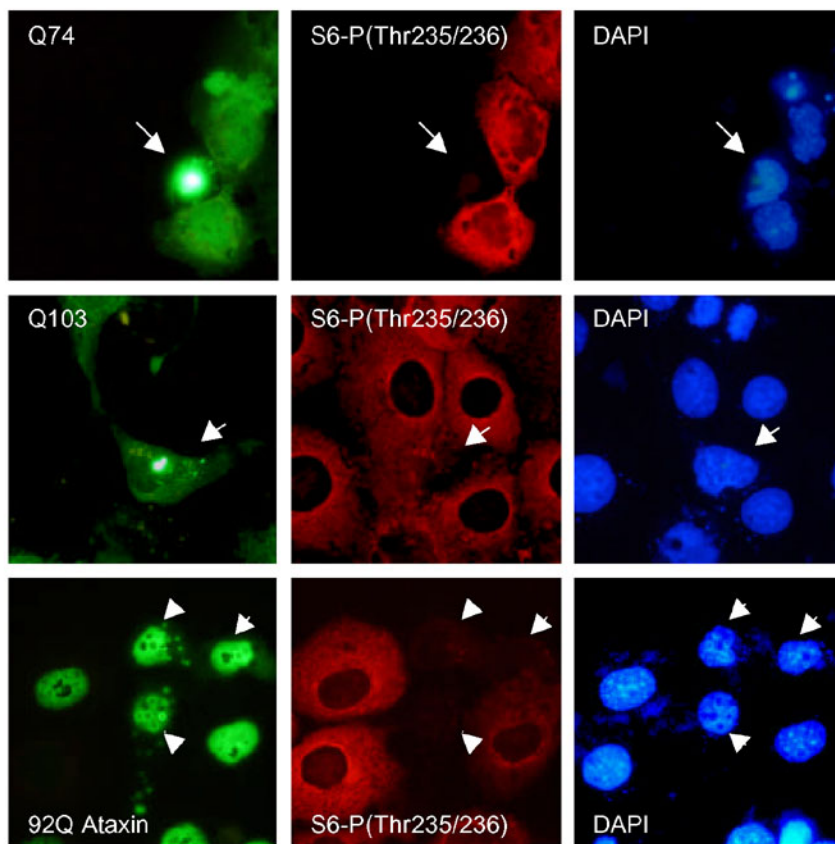


Figure 8



Supplementary figure 8

Decreased phospho-S6 immunoreactivity in non-apoptotic cells with aggregates.

Immunostaining of COS-7 cells expressing Q74 (top panel), Q103 (middle panel) or Ataxin 92Q (bottom panel) (green) with anti-phospho-S6 antibody (red) shows negative staining in aggregate-containing cells (arrows) that are healthy, as judged by morphology of DAPI stained nuclei (blue). Note that some of the nuclei in the top two panels are indented as a consequence of perinuclear aggresome formation by the cytosolic aggregates. This is a phenomenon we and others have frequently observed in HD cell models.