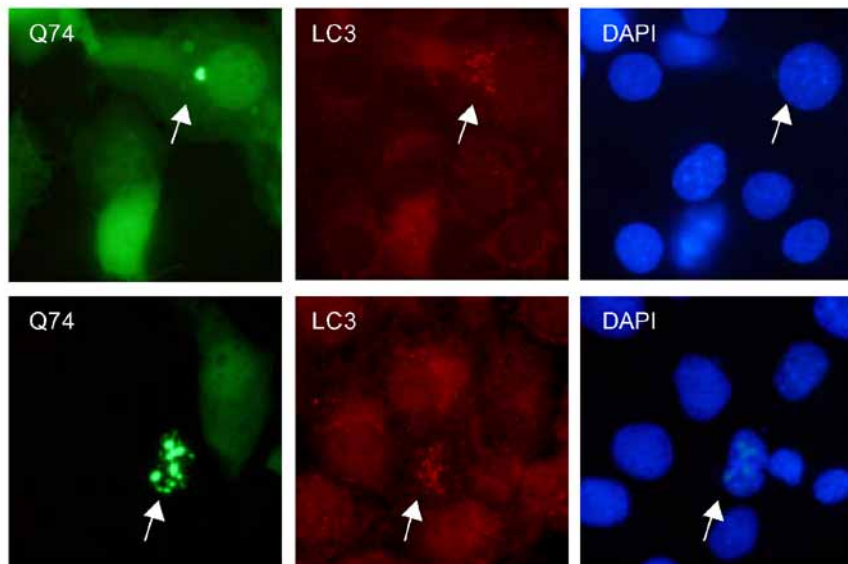


Figure 9



Supplementary figure 9

Increased autophagy in non-apoptotic cells with aggregates.

Immunostaining of COS-7 cells expressing Q74 (green) with anti-LC3 antibody (red) shows increased vesicular staining corresponding to autophagic vacuoles in aggregate-containing cells (arrows) that are healthy as judged by morphology of DAPI stained nuclei (blue).