

**Sudoku** Difficult No 14,859

					2			
			7		9		5	
				4			2	3
	1				6	9		
		9			8	4	3	
6	7		5	9			1	
			3	6			9	
	6	5		8	1	2		
		1						

**Fiendish** No 14,860

								6
	5			4			1	
7	3	9					8	
	4			3	9	1		
			4			7	6	
	6			7	1	9		
2	1	6					5	
	8			9			7	
								1

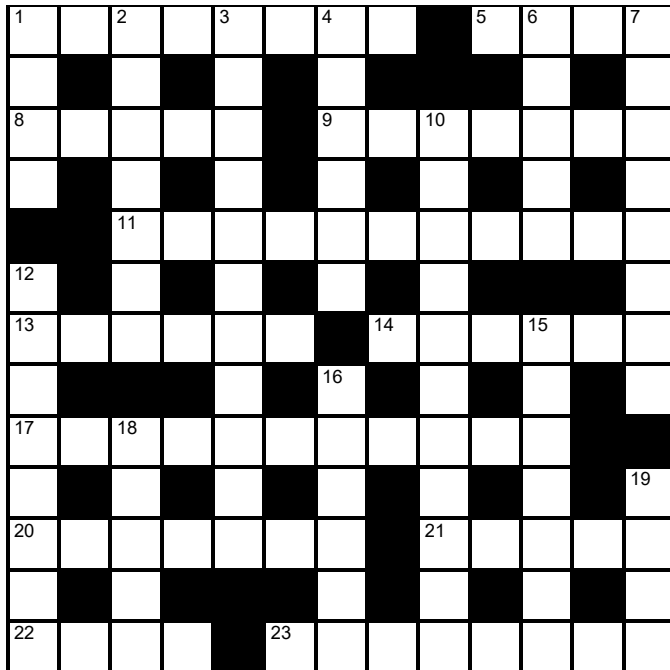
**Super fiendish** No 14,861

								5
	7		5	1				9
	3				8	1		4
		4			1			
		2				7	5	
		9			3			
	9				6	3		7
	1		7	4				6
								8

© PUZZLER MEDIA

**Cluelines** Stuck on Sudoku, Killer or KenKen? Call 0901 293 6263 before midnight to receive four clues for any of today's puzzles. Calls cost £1 plus your telephone company's network access charge. SP: Spoke, 0333 202 3390 (Mon-Fri 9am-5.30pm).

The Times Quick Cryptic No 2658 by Izetti



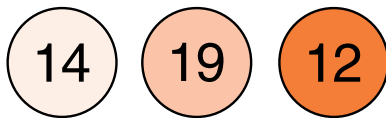
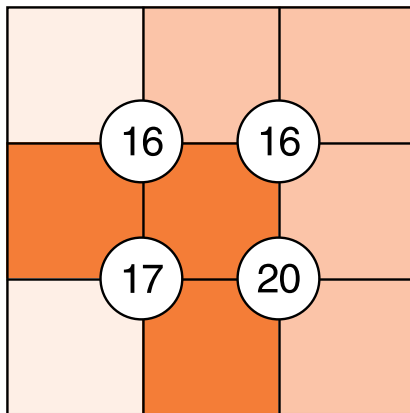
Across

- 1 Distinct part played with ease (8)
- 5 Vehicle parking? Grumble (4)
- 8 Males revolting in US city (5)
- 9 Greek character, villain in canoe (7)
- 11 Activists — people in tents drinking a gin excitedly (11)
- 13 Something in wardrobe husband found with annoyance (6)
- 14 Food component — gorge to get energy needed initially (6)
- 17 Emotional part of hospital involved in various ailments (11)
- 20 Needing to make arrangements for the match? (7)
- 21 Delayed in a slippery situation? (2,3)
- 22 Time to demand a job (4)
- 23 One of the 11 less sophisticated, going round South Africa (8)

Down

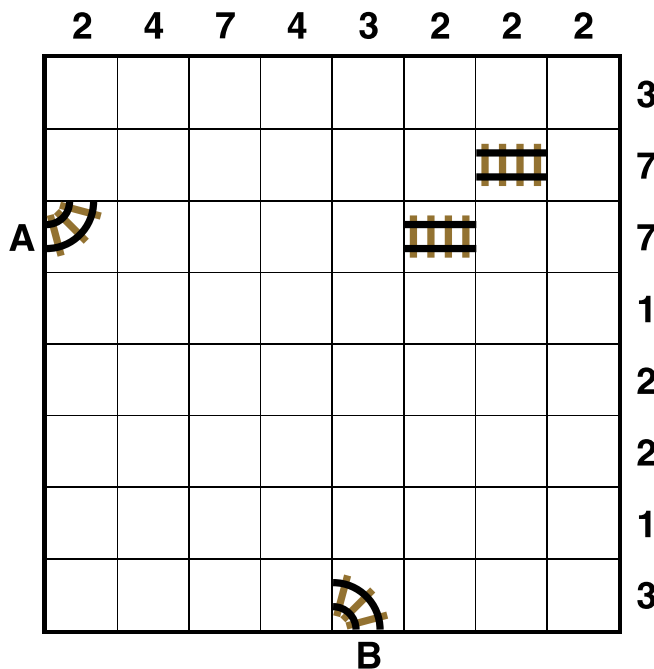
- 1 Thus repeatedly less than brilliant (2-2)
- 2 Bird priest trapped in soft container (7)
- 3 Recalling English person in club, in clique? (11)
- 4 Piece of headgear that is seen outside work (3,3)
- 6 View of one of Britain's invaders? (5)
- 7 Request to render song is delightful (8)
- 10 Members of family embracing good upper-class rules (11)
- 12 Most pure Charles facing ordeal? (8)
- 15 Agreed to be restricted about everything (7)
- 16 Top person offers newspaper article (6)
- 18 Emperor, say, being entertained by rising star (5)
- 19 Explosive Irish fellow expecting to succeed? (4)

Suko No 4098



Place the numbers 1 to 9 in the spaces so that the number in each circle is equal to the sum of the four surrounding spaces, and each colour total is correct

Train Tracks No 2227



Lay tracks to enable the train to travel from village A to village B. The numbers indicate how many sections of track go in each row and column. There are only straight sections and curved sections. The track cannot cross itself.

Word watch David Parfitt

Whitling

- a A fraction of a second
- b A young sea trout
- c A shaving of wood

Rogation

- a Pleading, supplication
- b The overuse of synonyms
- c Rakish misbehaviour

Guichet

- a A socially awkward person
- b A ticket-seller's hatch
- c A small egg tart or flan

**Poker** Byron Jacobs

**Pre-flop three-betting**

There are occasions in poker when, believe it or not, you are dealt a premium hand. If things are not going your way it may feel as though you have to wait an eternity for this happy event. However, there are also days when you run hot and seem to pick up a monster hand every other deal. Knowing how to play the big hands is crucial as the vast majority of any player's profit is generated from premium hands. These can be considered as A-A, K-K, Q-Q and A-K. In the long run, they always make money.

Having a premium hand can quickly become an anticlimax if you open, everyone else folds and you collect a miniscule pot. However, when someone else opens and you have a biggie, there is the promise of action and potentially a sizeable pot. With a premium you (almost) always want to 3-bet to build the pot. You have a big hand and are likely to win. You want the chips in the middle.

This is where the first decision arises. What sizing works best for the 3-bet? Many players have a fixed response here. They simply 3x (triple) the original bet. So if the opener made it 2.5BB (big blinds), they will make it 7.5BB. Much of the time this is OK but disregarding the particular circumstances of the hand can make this a bad mistake.

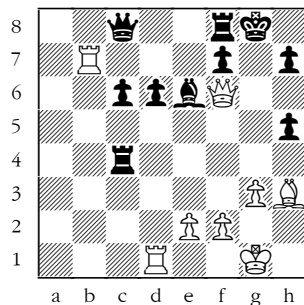
The most important factors to be considered when deciding on a

3-bet sizing are your position vis a vis the original bettor, and stack sizes. What will happen often is you 3-bet, everyone else folds and the original bettor calls. You then play post-flop against this Villain and you will either be "in position" (IP) or "out of position" (OOP). Playing OOP means you will have to make the first play on each post-flop street and Villain (who is IP) can then react. It is a considerable disadvantage to be OOP as Villain gets to see what you do before deciding on their play and so has an information advantage.

This advantage (playing IP) is magnified when stacks are deep. Deep stacks mean there is plenty of room for post-flop play, which greatly favours the IP player. So, if you are deep and are going to play the pot IP you should tend towards a modest 3-bet size to encourage action. Something between 2.5x and 3x generally works well as these raises offer Villain good pot odds so they will rarely fold. However, when OOP you are vulnerable in the post-flop play so you would (generally) prefer to take the pot down immediately. Now, bigger sizings are appropriate with 4x-5x being a more effective choice. This makes it expensive for the IP player to call and will encourage more folds.

If you do bet big and they call, you will be playing a large pot OOP. This is not ideal but in poker, as in life, you can't always avoid tricky situations. We'll look at an example next week.

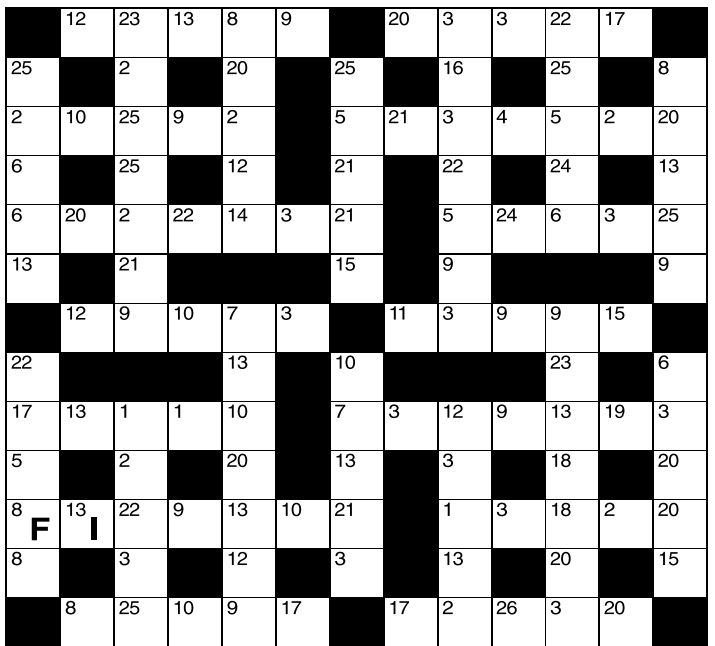
**Winning Move**



**White to play.** This position is from Makarian-Nigalidze, Titled Tuesday, chess.com 2024.

The feature here that immediately catches the eye is Black's shattered kingside. However, Black does have two threats: 1 ... Qxb7 and 1 ... Bxh3. At first sight it appears the only way to alleviate both threats is with 1 Bxe6 but after 1 ... Qxe6 Black is well in the game. What did White play instead?

**Codeword No 5197**



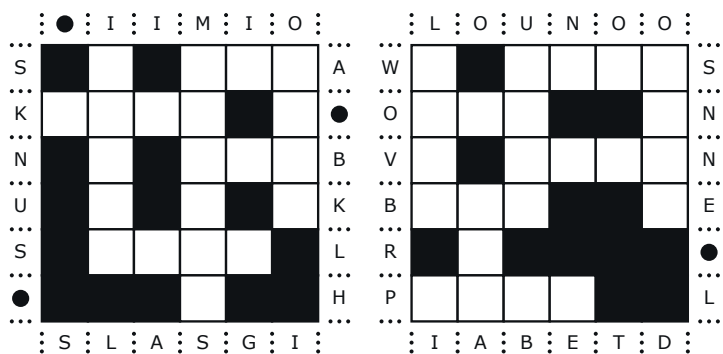
A B C D E F G H I J K L M N O P Q R S T U V W X Y Z

1	2	3	4	5	6	7	8	9	10	11	12	13
14	15	16	17	18	19	20	21	22	23	24	25	26

Every letter in this crossword-style grid is represented by a number from 1 to 26. Each letter of the alphabet appears in the grid at least once. Use the letters already provided to work out the identity of further letters. Enter letters in the main grid and the smaller reference grid until all 26 letters of the alphabet have been accounted for. Proper nouns are excluded. *Yesterday's solution, right*

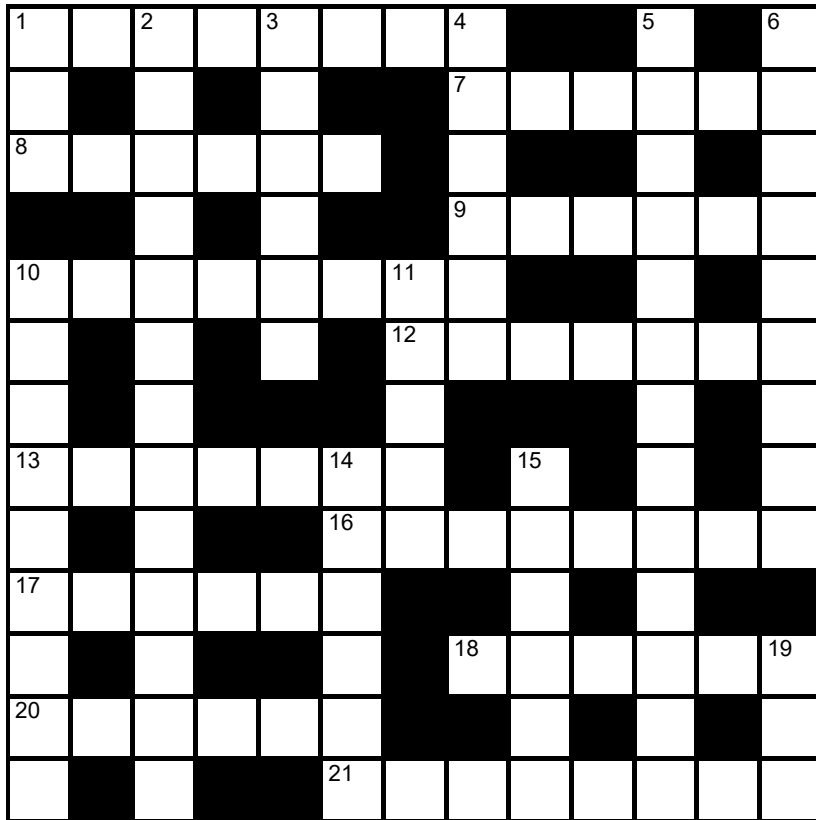
**Cluelines Stuck on Codeword?** To receive 4 random clues call 0901 293 6262 or text TIMECODE to 64343. Calls cost £1 plus your telephone company's network access charge. Texts cost £1 plus your standard network charge. For the full solution call 0905 757 0142. Calls cost £1 per minute plus your telephone company's network access charge. SP: Spoke, 0333 202 3390 (Mon-Fri, 9am-5.30pm).

**Lexica Easy No 7369 Hard No 7370**



Slide the letters either horizontally or vertically back into the grid to produce a completed crossword. Letters are allowed to slide over other letters

**times2 Crossword No 9513**



**Across**

- 1 Wonderful (8)
- 7 Insignificant person (6)
- 8 Enlargement, expansion (6)
- 9 Trees or mosses, eg (6)
- 10 Spy's alias (4,4)
- 12 --- number, third or tenth, eg (7)
- 13 Circus tumbler (7)

- 16 One sponsored at a baptism (8)
- 17 Underground room (6)
- 18 Satay sauce ingredient (6)
- 20 Ice cream dessert (6)
- 21 Pessimistic, gloomy (8)

**Down**

- 1 Pear-shaped tree fruit (3)
- 2 Terrifying, spine-chilling (13)
- 3 Of hidden potential (6)
- 4 Person shooting from cover (6)
- 5 German wartime mortar; habitual complainer (7,6)
- 6 Former name of Malawi (9)
- 10 Smoking accessory (5,4)
- 11 Maxim on a coat of arms (5)
- 14 Concurred (6)
- 15 Protective partition (6)
- 19 Baby or toddler (3)

**Solution to Crossword 9512**

G	U	A	R	D	I	A	N	W	E	E	D	
R	C	I	S					G	E			
O	L	E	S	I	T	E	A	R	T	S		
S	R	C	U	F	E	E						
S	U	B	C	O	N	T	R	A	C	T	O	R
		I	U	E	V			V				
E	N	C	O	R	E		C	O	F	F	E	E
L		A	S	U	R							
A	L	L	I	G	A	T	O	R	P	E	A	R
T	O	E	R	A	I	O						
I	R	O	N		B	A	R	B	G	I	G	
O	K				I	L	H	U				
N	E	S	T		U	N	S	E	T	T	L	E

**Need help with today's puzzle?** Call 0905 757 0143 to check the answers. Calls cost £1 per minute plus your telephone company's network access charge. SP: Spoke, 0333 202 3390 (Mon-Fri 9am-5.30pm).

**KenKen** Medium No 6189

24×			10×		36×
30×		11+			
	3+			60×	
6+	2-		72×		5-
	20×				
6		8+		2÷	

All the digits 1 to 6 must appear in every row and column. In each thick-line "block", the target number in the top left-hand corner is calculated from the digits in all the cells in the block, using the operation indicated by the symbol.

© 2010 KENKEN PUZZLE & TIM MEXTOY, DIST. BY U.S. INC. WWW.KENKEN.COM

**Futoshiki** No 4737

<input type="text"/>	<input type="text"/>	<input type="text"/>	<input type="text"/>	<input type="text"/>
<input type="text"/>	<input type="text"/>	<input type="text"/>	<input type="text"/>	<input type="text"/>
<input type="text"/>	<input type="text"/>	<input type="text"/>	<input type="text"/>	<input type="text"/>
<input type="text"/>	<input type="text"/>	<input type="text"/>	<input type="text"/>	<input type="text"/>
<input type="text"/>	<input type="text"/>	<input type="text"/>	<input type="text"/>	<input type="text"/>
<input type="text"/>	<input type="text"/>	<input type="text"/>	<input type="text"/>	<input type="text"/>
<input type="text"/>	<input type="text"/>	<input type="text"/>	<input type="text"/>	<input type="text"/>
<input type="text"/>	<input type="text"/>	<input type="text"/>	<input type="text"/>	<input type="text"/>
<input type="text"/>	<input type="text"/>	<input type="text"/>	<input type="text"/>	<input type="text"/>

Fill the blank squares so that every row and column contains each of the numbers 1 to 5 once only. The symbols between the squares indicate whether a number is larger (>) or smaller (<) than the number next to it.

**Kakuro** No 3696

	17	6	23	16		26	17		32	4
21					16			3		
34					4			4		
	6			3			14			
		17		27		12				
9	30			28						17
39				23				16		
4			34					28		
	10		3			6			23	
	4			3		6		16		3
	16			3			16			
17			34							
16			6			26				

Fill the grid using the numbers 1 to 9 only. The numbers in each horizontal or vertical run of white squares add up to the total in the triangle to its left or above it. The same number may occur more than once in a row or column, but not within the same run of white squares.

© PUZZLER MEDIA

**Quintagram®**

Solve all five cryptic clues using each letter underneath once only

1 Cap taken from madame's good bag (6)

— — — — —

2 Some answered negatively about sex (6)

— — — — —

3 Did like fish without pastry (6)

— — — — —

4 Few rats moving around, one with fine teeth (4,3)

— — — — —

5 Son, cunning, concealing newspaper fast (7)

— — — — —

A	B	C	D	D	E	E	E
E	E	F	F	G	I	I	L
N	N	N	O	O	P	R	R
S	S	T	T	T	W	W	Y

**Brain Trainer**

<b>EASY</b>	5	SQUARE IT	+ 7	÷ 8	x 12	- 15	÷ 3	x 7	+ 4	÷ 9	<b>ANSWER</b>	
<b>MEDIUM</b>	85	x 4	- 56	50% OF IT	+ 74	÷ 6	7/9 OF IT	150% OF IT	- 15	x 13	<b>ANSWER</b>	
<b>HARDER</b>	98	+ 524	+ 1/2 OF IT	÷ 3	- 243	x 5	÷ 20	SQUARE IT	+ 473	+ 2/3 OF IT	<b>ANSWER</b>	

**Polygon**



From these letters, make words of **four** or more letters, always including the central letter. Answers must be in the *Concise Oxford Dictionary*, excluding capitalised words, plurals, conjugated verbs (past tense etc), adverbs ending in LY, comparatives and superlatives.  
**How you rate** 12 words, average; 17, good; 23, very good; 30, excellent

**Yesterday's answers**  
 cist, city, icky, icy, irk, its, kist, kit, kris, rick, risk, risky, sic, sick, sir, sit, ski, skirt, skit, stick, sticky, stir, stirk, tic, tick, trick, tricky, tricky

**Cell Blocks No 5080**

	4		2
	3	4	
	2		
6			5 5
		5 3	
			2
8			

Divide the grid into square or rectangular blocks, each containing one digit only. Every block must contain the number of cells indicated by the digit inside it.

**Set Square No 3699**

	+		x		= 18
x		+		-	
	+	8	-		= 4
+		-		+	
	+	3	÷		= 1
=		=	=		
14		6		4	

Enter each of the numbers from 1 to 9 in the grid, so that the six sums work. We've placed two numbers to get you started. Each sum should be calculated left to right or top to bottom.

Please note, BODMAS does not apply

**Killer Tricky No 9432**

30		8	11	7	17	14	10	
	7		18	9	22		12	
11							19	
		22	20				11	
4			10		21			
14			16			8	21	
	21			12				
		11		4		15		

**Killer Deadly No 9433**

10	6		10		35		21	
	25	18						
		21	14			9	19	10
22			25					
					19			
	21			30				
				12		20		11
10								
		23				14		

As with standard Sudoku, fill the grid so that every column, every row and every 3x3 box contains the digits 1 to 9. Each set of cells joined by dotted lines must add up to the target number in its top-left corner. Within each set of cells joined by dotted lines, a digit cannot be repeated.

**Cluelines** Stuck on Sudoku, Killer or KenKen? Call 0901 293 6263 before midnight to receive four clues for any of today's puzzles. Calls cost £1 plus your telephone company's network access charge. SP: Spoke, 0333 202 3390 (Mon-Fri 9am-5.30pm).

Times Crossword 28,899

1		2		3		4		5		6		7		8
9									10					
11						12								
		13						14				15		
16														
17				18						19				
														20
21		22				23				24				
25						26								
27								28						

ACROSS

- 1 Unfair attempt to limit travel time on vacation (7)
- 5 Calendar gals stripped (one not in the buff) (7)
- 9 Fragments taken from street of a trailer (9)
- 10 Sophisticated small drone close to plane (5)
- 11 Sinister body regulating ads in the City (5)
- 12 Plant that's difficult gardener is going to put in fine soil, initially (9)
- 13 Retire due to ill health, maybe eventually like one's teacher? (4,2,4,3)
- 17 Director finished with lists completely (4,4,5)
- 21 A sign radio programme has not ended (3,6)
- 24 Without question a difficulty pulling back loose garment (5)
- 25 Parade a symbol of victory that is not shown on BBC (5)
- 26 Decline to show hesitation, becoming vocal patriot? (4-5)
- 27 Like the clappers are striking: without end? (7)
- 28 Fear led to shift supporting Union (7)

DOWN

- 1 Happen to note there's a ringer going about! (6)
- 2 Fish, good variety of tuna, given to a huge glutton (9)
- 3 Bird heading away from its last animal sanctuary (7)
- 4 Take apart books in pitiful English (9)
- 5 Porter perhaps cross, meeting a smart home help (5)
- 6 Confuse A&E maybe, with obscure case of pinkeye (7)
- 7 Irish male eleven finally getting score draw? (5)
- 8 A contemptuous person roughly upended lover in play (8)
- 14 Spouse exercising for health (5,4)
- 15 One visiting stops at first by delta in Mississippi maybe (3,6)
- 16 Wife loathing extremely short, dismissive remark (8)
- 18 A measure of what attracts concertgoers — tedious shows! (7)
- 19 Gave way after reply, periodically getting jostled (7)
- 20 Hardy perennial, this? Yes and no (6)
- 22 Something cracked, holding up energy supply (5)
- 23 Big, strong guy with paper hanky's last (5)

Yesterday's solution 28,898

D	R	E	A	D	L	O	C	K	S	S	E	M	I
I	L	L	I	B	A	R	Y	N					
G	A	L	L	A	N	T	S	T	O	R	I	E	D
U	I	P	A	H	Y	N	U						
P	A	N	T	H	E	I	S	M	A	L	G	O	L
B	A	T	O	N	S	C	R	E	W	P	I	N	E
O	O	O											
C	O	N	S	U	L	T	E	E	R	O	A	S	T
A	S	P	E	N	Q	U	A	V	E	R	I	N	G
C	I	E	U	C	S	C	A						
C	O	L	O	S	S	I	U	N	T	I	N	G	
I	A	S	L	E	E	S	E						
O	N	U	S										

Check today's answers by ringing 0905 757 0141 by midnight. Calls cost £1 per minute plus your telephone company's network access charge. SP: Spoke 0333 202 3390.

Solutions

Quick Cryptic 2657

C	R	I	C	K	E	T	B	A	T				
H	N	I	U	I	C	F							
I	N	C	I	S	O	R	R	U	L	E	R		
L	A	S	K	F	O	E							
L	A	R	K	M	E	D	I	O	C	R	E		
	C	E	Y	E	K	L							
I	N	E	R	T									
M	R	H	C	D	A								
P	L	A	T	I	N	I	U	M		S	T	O	P
A	T	O	C	S	C	A							
C	H	E	A	P	K	I	T	C	H	E	N		
T	D	I	O	E	E	T							
	C	A	N	O	F	W	O	R	M	S			

Codeword 5196

K	N	I	G	H	T	L	Y	C	O	M	B
U	M	A	E	G	R	A					
D	E	P	O	T	C	A	R	I	B	O	U
O	I	E	T	A	I	X					
S	L	O	P	C	O	N	F	E	T	T	I
	U	B	E	R	T						
B	I	S	Q	U	E	R	E	S	C	U	E
R		C	G	R	A						
O	P	T	I	O	N	A	L	A	D	Z	E
W	U	L	T	J	E	L					
S	E	R	V	I	C	E	O	U	N	C	E
E	P	C	A	I	Z	G					
R	I	S	K	Q	U	A	N	D	A	R	Y

Kakuro 3695

2	4	1	6	7	9	5	1	
1	2	7	3	4	9	8	1	2
3	1	1	2	5	1	2	3	
3	1		2	4	3			
4	5	2	9	8	3	1	8	7
7	9	7	4	1	2	3	5	9
	2	3	1		1	2		
2	3	1	5	5	9	3	1	
5	1	1	3	8	7	6	9	2
1	2	2	1	4	1	7	3	

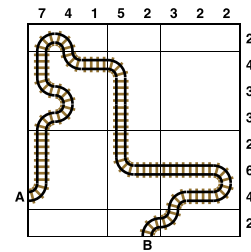
Sudoku 14,856

1	2	9	5	3	8	4	7	6
8	7	3	4	6	2	9	5	1
5	4	6	9	1	7	3	8	2
9	8	7	3	5	1	2	6	4
4	1	2	8	9	6	5	3	7
3	6	5	7	2	4	1	9	8
6	5	8	2	4	3	7	1	9
7	9	4	1	8	5	6	2	3
2	3	1	6	7	9	8	4	5

Tetonor 459

108	70	49	180
3 x 36	69 + 1	45 + 4	45 x 4
52	31	147	20
49 + 3	22 + 9	3 x 49	10 + 10
28	136	38	69
3 + 25	34 x 4	34 + 4	69 x 1
198	39	75	100
9 x 22	3 + 36	3 x 25	10 x 10

Train Tracks 2226



Sudoku 14,857

1	3	8	7	5	9	6	2	4
7	5	6	4	3	2	9	8	1
9	2	4	8	6	1	3	7	5
6	8	2	3	9	5	1	4	7
3	7	9	1	8	4	2	5	6
4	1	5	2	7	6	8	3	9
8	4	3	6	1	7	5	9	2
5	6	7	9	2	8	4	1	3
2	9	1	5	4	3	7	6	8

Cell Blocks 5079

		2		2	
2					2
2	12	3	6		
					2
		4			
			2		
3	5				2

Set Square 3698

3	x	7	-	9
x		-		+
4	-	1	-	2
+	x		x	x
8	-	6	x	5

Lexica 7367

						A
T	H	U	G			L
O			R	A		W
S			I			A
S	I	M	P	L		Y
						S

Sudoku 14,858

5	2	3	9	8	4	6	7	1
8	4	1	7	5	6	2	3	9
7	6	9	1	3	2	4	8	5
4	7	5	3	1	9	8	6	2
1	8	2	6	7	5	9	4	3
9	3	6	4	2	8	5	1	7
2	5	7	8	4	3	1	9	6
6	1	8	5	9	7	3	2	4
3	9	4	2	6	1	7	5	8

Futoshiki 4736

5	2	<	3	4	1		
					^		
4	>	3	2	1	5		
1	5	>	4	2	3		
3	4	1	5	2	v		
2	>	1	5	>	3	<	4

KenKen 6188

4	5	2	6	1	3
6	4	3	5	2	1
5	1	4	3	6	2
2	6	5	1	3	4
3	2	1	4	5	6
1	3	6	2	4	5

Lexica 7368

C	H	A	T		C
	U				H
	M	A	G		I
	P		A	I	L
				M	
A	S	H	E	N	

Today's solutions

Killer 9430

8	4	2	1	5	9	7	3	6
6	1	5	7	3	8	2	9	4
3	9	7	2	4	6	5	8	1
4	8	3	5	2	1	9	6	7
1	5	6	9	7	4	8	2	3
7	2	9	8	6	3	4	1	5
2	3	1	4	9	7	6	5	8
9	7	8	6	1	5	3	4	2
5	6	4	3	8	2	1	7	9

Killer 9431

7	6	8	3	4	1	5	9	2
5	9	2	7	8	6	3	4	1
4	3	1	5	2	9	8	6	7
8	2	3	9	6	7	4	1	5
9	4	5	2	1	8	7	3	6
1	7	6	4	3	5	2	8	9
6	5	7	8	9	4	1	2	3
2	8	9	1	7	3	6	5	4
3	1	4	6	5	2	9	7	8

Cryptic Quintagram

- 1 Bonnet
- 2 Gender
- 3 Copied
- 4 Fret saw
- 5 Swiftly

Suko 4098

9	1	8
16	16	
2	4	3
17	20	
5	6	7

Brain Trainer

- Easy 9
- Medium 351
- Harder 1,270

Word watch

- Whitling** (b) A young sea trout (*Collins*)
- Rogation** (a) Pleading, supplication (*Chambers*)
- Guichet** (b) A ticket-seller's hatch (*OED*)

Chess – Winning Move

1 Rxf7! exploits the pin along the h3-c8 diagonal. After 1... Rxf7 (1... Bxf7 2 Bxc8 Rxc8 3 Rxd6 is hopeless) 2 Bxe6 Qf8 3 Rxd6 White will win easily, eg 3... Rg4 4 Bxf7+ Qxf7 5 Rd8+ mating



# Samurai difficult

Fill each grid so that every column, every row and every 3x3 box contains the digits 1 to 9. Where the puzzles overlap, the rows and columns do not go beyond their usual length.

## Futoshiki

Fill the blank squares so that every row and column contains each of the numbers 1 to 5 once only. The symbols between the squares indicate whether a number is larger ( $>$ ) or smaller ( $<$ ) than the number next to it.

□	□	□	□	>	□	
∨						
□	□	>	□	□	□	
∧			∧			
□	□	□	□	□	□	
			∨			
□	5	□	<	□	□	
5	□	□	>	□	>	□

## Train Tracks

Lay tracks to enable the train to travel from village A to village B. The numbers indicate how many sections of track go in each row and column. There are only straight sections and curved sections. The track cannot cross itself.

	4	5	5	6	1	2	4	5	
									4
									6
									7
A									5
									4
									4
									1
									1
									B

## Sudoku easy

6					3
4	3	5		9	6
		1		6	
	5	8	3		1
	7	9	1		2
			8		
9	2	3		4	8
			3	7	2

## Killer gentle

Fill the grid so that every column, every row and every 3x3 box contains the digits 1 to 9. Each set of cells joined by dotted lines must add up to the target number in its top-left corner. Within each set of cells joined by dotted lines, a digit cannot be repeated.

5		21		6	8	4	17
22	19		4				
	6	4	13	16	16	9	
						14	9
5		15	7	28			
13	16				14	5	
		5				16	8
4	15		6	13			
	9		17	16			

## Suko

23	19	
18	12	

12	18	15
----	----	----

Place the numbers 1 to 9 in the spaces so that the number in each circle is equal to the sum of the four surrounding spaces, and each colour total is correct

## Codeword

Every letter in the crossword-style grid, right, is represented by a number from 1 to 26. Each letter of the alphabet appears in the grid at least once. Use the letters already provided to work out the identity of further letters. Enter letters in the main grid and the smaller reference grid until all 26 letters of the alphabet have been accounted for. Proper nouns are excluded.

	14	15	16	16	7	16	5		11	18	13	19
14		11				3		26		20		16
26	18	1	23	16	17	16		18	20	11	12	16
10		19		3		12		1		7		12
9	17	16	20	19		6	26	16	19	21	23	
12				10		19		2		17		23
11	5	4	26	21	17		22	13	U	17	8	11
17		13		23		1		21				21
	11	8	15	11	1	19		26	10	8	11	17
1		13		19		26		13		10		9
19	13	20	20	16		5	21	1	16	11	1	16
21		11		5		8				24		10
10	11	10	16		1	25	17	26	17	25	12	

A B C D E F G H I J K L M N O P Q R S T U V W X Y Z

1	2	3	4	5	6	7	8	G	9	10	11	12	13	U
14	15	H	16	17	18	19	20	21	22	23	24	25	26	

## Mini Sudoku

Fill in the grid so that every column, every row and every 3x2 box contains the digits 1 to 6

5				1	
					2
		6			
1			4		
6					
	3	2			5

Solutions in tomorrow's Times2

THE  TIMES

MindGames Wednesday April 24 2024  
Brain boost puzzles

# Yesterday's solutions

## SAMURAI

3	4	8	1	9	2	6	7	5				5	3	9	4	6	2	8	1	7
6	9	1	5	7	3	4	8	2				6	2	1	8	7	9	4	3	5
7	2	5	6	8	4	1	9	3				7	4	8	5	1	3	2	6	9
2	6	3	7	1	8	5	4	9				2	1	4	9	8	6	5	7	3
5	1	4	3	2	9	8	6	7				9	7	5	3	4	1	6	8	2
8	7	9	4	6	5	3	2	1				3	8	6	7	2	5	1	9	4
1	3	6	9	4	7	2	5	8	7	1	9	4	6	3	1	5	7	9	2	8
9	5	2	8	3	6	7	1	4	3	5	6	8	9	2	6	3	4	7	5	1
4	8	7	2	5	1	9	3	6	2	8	4	1	5	7	2	9	8	3	4	6
						1	8	5	4	6	7	3	2	9						
						3	9	7	1	2	5	6	8	4						
						4	6	2	8	9	3	7	1	5						
6	4	3	2	8	9	5	7	1	9	3	8	2	4	6	9	7	3	8	5	1
7	5	2	1	6	3	8	4	9	6	7	2	5	3	1	8	6	2	4	7	9
9	8	1	7	5	4	6	2	3	5	4	1	9	7	8	4	5	1	6	2	3
8	1	4	6	9	7	2	3	5				7	6	5	2	8	9	1	3	4
5	2	9	4	3	8	7	1	6				4	8	2	1	3	6	7	9	5
3	7	6	5	1	2	9	8	4				3	1	9	7	4	5	2	8	6
1	3	8	9	2	5	4	6	7				1	9	7	5	2	4	3	6	8
2	9	7	3	4	6	1	5	8				6	2	4	3	9	8	5	1	7
4	6	5	8	7	1	3	9	2				8	5	3	6	1	7	9	4	2

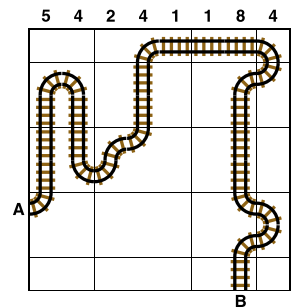
## SUKO

5	4	1
8	7	2
3	6	9

## MINI SUDOKU

4	5	2	1	3	6
1	3	6	2	4	5
5	4	3	6	2	1
6	2	1	3	5	4
3	1	5	4	6	2
2	6	4	5	1	3

## TRAIN TRACKS



## FUTOSHIKI

1	3	5	>	4	2
			∨		
5	2	>	1	3	4
			∧		
3	<	4	2	1	5
2	1	4	5	3	
	∧	∧			
4	5	3	2	1	

## SUDOKU

4	1	9	2	5	3	6	8	7
8	5	3	6	9	7	1	2	4
6	7	2	1	4	8	5	3	9
1	8	6	4	3	5	7	9	2
9	2	4	7	8	6	3	1	5
5	3	7	9	2	1	4	6	8
7	9	1	8	6	4	2	5	3
2	6	5	3	7	9	8	4	1
3	4	8	5	1	2	9	7	6

## KILLER

4	2	9	6	3	1	5	7	8
7	6	3	5	8	9	1	2	4
1	5	8	7	2	4	6	9	3
5	3	1	2	7	8	9	4	6
8	9	7	4	5	6	3	1	2
6	4	2	9	1	3	7	8	5
2	1	6	3	4	7	8	5	9
9	7	5	8	6	2	4	3	1
3	8	4	1	9	5	2	6	7

## CODEWORD

A	N	N	A	L	F	L	X	
I	O	R	I	I	N			
N	A	V	I	G	A	T	E	A
J	E	E	M	G	W	O		
U	G	L	Y	L	U	K	E	W
N		R	S	T	R	P		
C	A	S	H	E	W	R	E	V
T	Q	D	S	D				
I	N	U	N	D	A	T	E	Z
O	A	E	O	B	N	I		
N	I	L	N	E	W	S	A	G
		L	E	E	L	P	Y	
E	Y	E	D		D	E	M	O