

## Cherryburn Access Statement

Cherryburn, Station Bank, Mickley Square, Stocksfield NE43 7DD

T: 01661 843276

E: [cherryburn@nationaltrust.org.uk](mailto:cherryburn@nationaltrust.org.uk)

### Introduction

Cottage, farmhouse and garden, the birthplace of Thomas Bewick. Paths throughout property can be sloped, they are surfaced with fine grade material, stone or grass. Dogs, including Assistance Dogs are welcome on short leads in the garden. Livestock often grazing in the paddock.

Mobile phone signal is decent with main providers across site.

### Arrival & Parking Facilities

The car park at Cherryburn has space for 25 - 30 cars

The path from the car park is sloped, surfaced with fine gran material.

There is a drop off point in the courtyard, accessed via the right-hand gate



Entrance to  
Cherryburn car  
park



Gate to drop off point.



Path from car park.

## WCs

There is one accessible toilet, within the ladies toilet, at the end of the farmhouse. Toilet is on the right within the cubicle. Grab handle is fitted. No automatic doors.





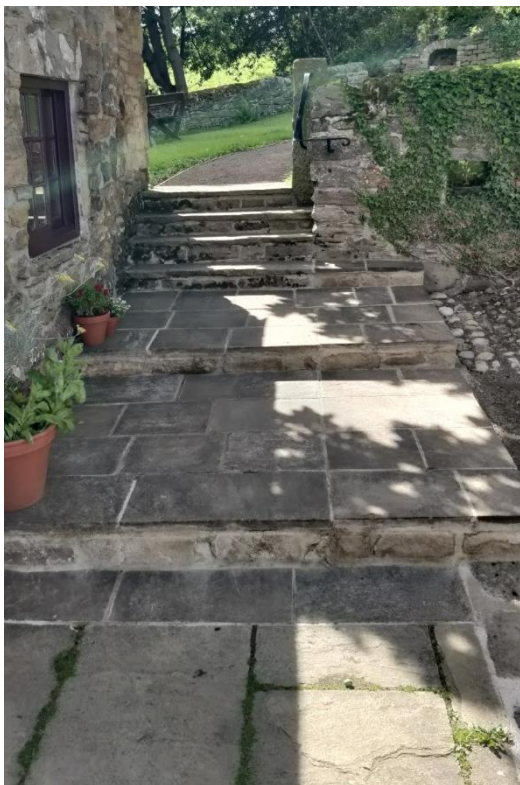
## Birthplace Cottage

Stone built 18<sup>th</sup> Century building across 30m of a gentle slope with a fine grain surface. Low door height. Cottage has flagstone floor. Small windows reduced natural light, spaces are lit by electric light. The right-hand door has a low threshold



## Farmhouse

Across yard from Birthplace Cottage up six steps, with a handrail. Yard entrance to Press Room has two steps, a temporary ramp is available. Flat entrance to Museum from the garden side. Carpeted floor, electric lighting. Down three steps into Press Room, tiled floor, electric light. Two-stepped exit from Press Room to yard, portable ramp is available.



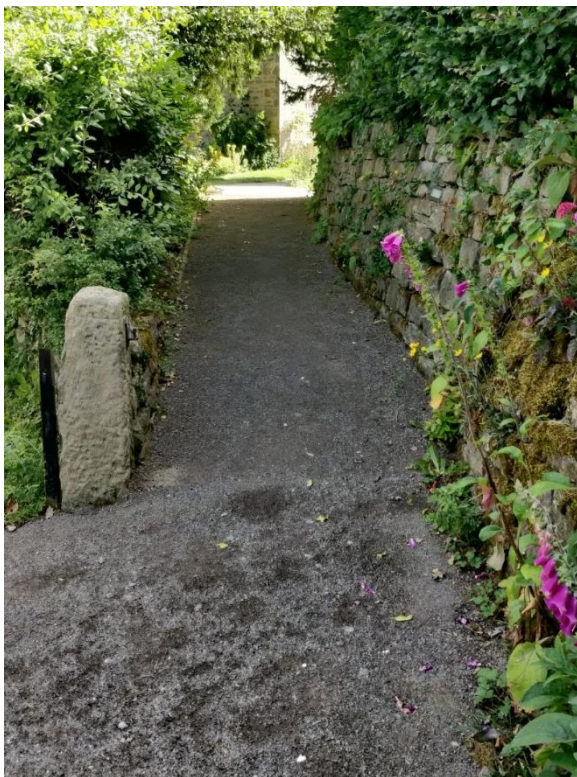
Steps from Yard towards Farmhouse



Yard entrance to Press Room



Yard entrance to Press Room with temporary ramp in place.



Wheelchair accessible path to front of Farmhouse



Flat entrance to Museum from Garden side



Three steps from Press Room to Museum



## Garden

Paths a mixture of stone, fine material and grass, sometimes uneven.



Path from Farmhouse to lawn and upper garden.

Benches in upper garden with space for wheelchair along side



## Contact details for more information

T: 01661 843276

E: [cherryburn@nationaltrust.org.uk](mailto:cherryburn@nationaltrust.org.uk)

June 2022





# National Trust

## Map

