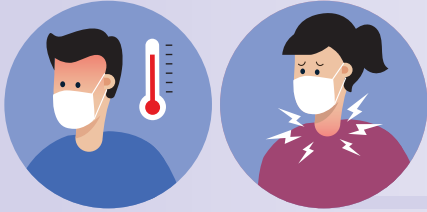




以下情況下建議戴口罩

Mask wearing for the following situations

1



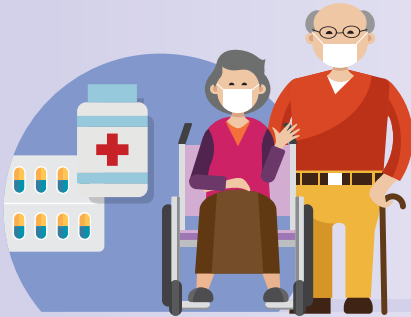
任何有發燒或呼吸道病徵的人士
Any persons with fever or respiratory symptoms;

2



任何到訪或工作於高風險場所如安老院舍 / 殘疾人士院舍、醫療設施臨床區域等的人士；
Any persons who are visiting or working in high risk places such as residential care homes for the elderly, residential care homes for persons with disabilities, and clinical areas of healthcare facilities;

3



高危人士 (如本身有健康問題或免疫力低的人士) 前往人多場所例如乘搭公共交通等；或
High risk persons (e.g. persons with underlying medical conditions or persons who are immunocompromised) who are going to crowded places such as public transport; or

4



當包括新冠病毒在內的各種呼吸道病毒的活躍程度預期會出現上升趨勢時，高危人士到訪公眾地方時應佩戴外科口罩，而市民在乘搭公共交通工具或在人多擠迫的地方逗留時亦應佩戴外科口罩
When an increasing trend in activity of respiratory viruses including SARS-CoV-2 virus is expected, high risk persons are recommended to wear a surgical mask when visiting public places, while the public should also wear a surgical mask when taking public transportations or staying at crowded places.

有關正確佩戴口罩的詳細信息，請參閱
https://www.chp.gov.hk/files/pdf/use_mask_properly_chi.pdf

For details on proper mask wearing, please refer to
https://www.chp.gov.hk/files/pdf/use_mask_properly.pdf