



TBILISI CITY HALL

TBILISI IN FIGURES 2018



Economic Development Office Tbilisi City Hall



PREFACE

The annual edition of Tbilisi Statistics overview is published by the Economic Development Office of Tbilisi City Hall.

The publication provides general information on city developments and captures main economic trends.

• • • • •

• • • • •

• • • • •

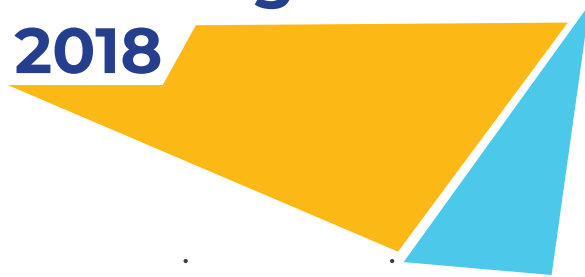
• • • • •

• • • • •

CONTENTS

■ International Ranking 2018	6
■ History of Tbilisi	8
■ Urban Area and Climate	11
■ Politics and Urban Administration	16
■ People in Tbilisi	19
■ Living in Tbilisi	23
■ Tourism in Tbilisi	26
■ Culture & Leisure	29
■ Education & Research	32
■ Economy of Tbilisi	34
■ Traffic and Mobility	43
■ International Cooperation	47

International Ranking 2018





DOING BUSINESS

1st place in Europe&Central Asia
9th place Worldwide



ECONOMIC FREEDOM INDEX

9th place in Europe
16th place Worldwide



THE GOOD COUNTRY

11th place in Open Trade
Worldwide



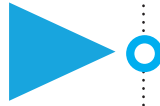
THE WORLDS CHEAPEST CITIES

3rd place in Central Asia
11th place Worldwide

History of Tbilisi



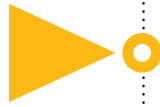
IV century
the most
important
crossroad in
Georgia



VI century
the capital city
and the political
center of the
country



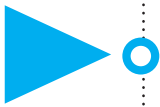
XII century
the cultural center
of Georgia and the
whole Caucasus



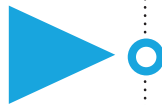
1755
A philosophical
Seminary in
Tbilisi



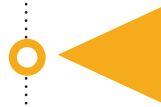
1872-1883
Establishment of
railway with Poti,
Batumi and Baku



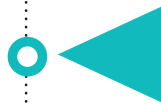
1918
Tbilisi State
University



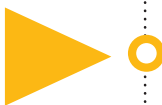
1918
The First
Democratic
Republic of Georgia



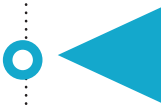
1928
Tbilisi
International
Airport



1966
establishment
of Tbilisi Metro



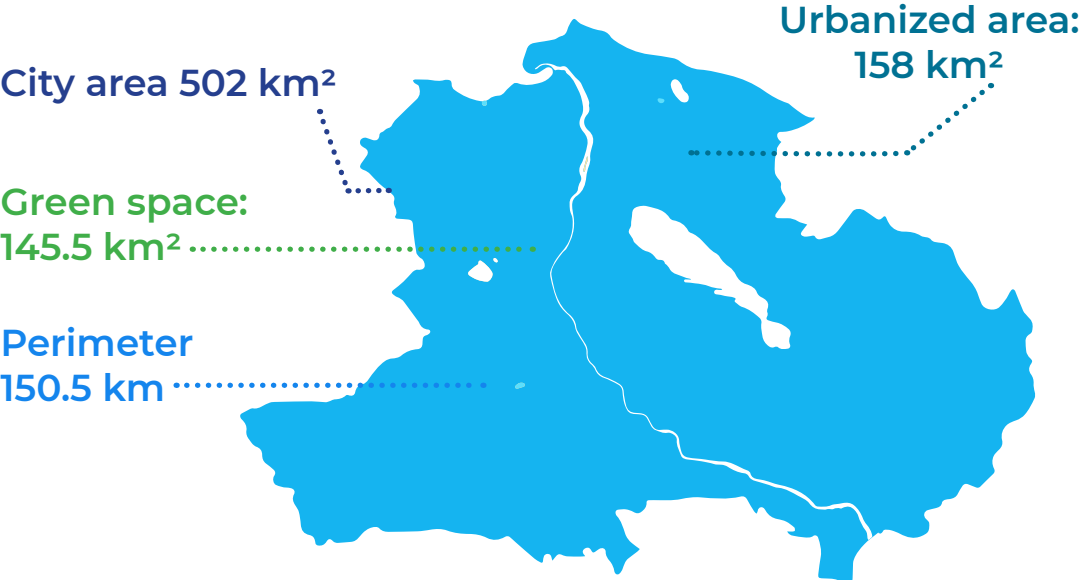
2010
the first direct
Mayoral elections
of the city



Urban Area and Climate



Land Use



Density: 2 217 pers. per km²

Districts km²

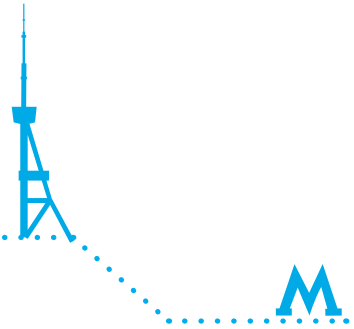


Buildings

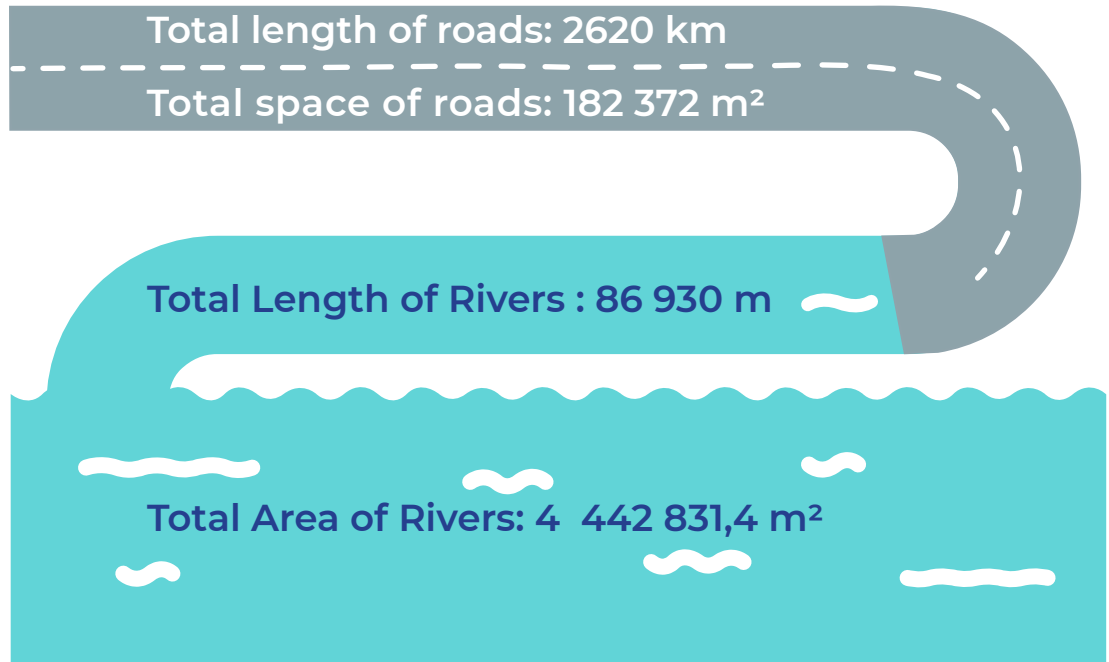
Tallest Building:
Tbilisi TV Broadcasting Tower 274.5 m

Lowest point:
Rustaveli Metro Station – 60 m

The highest elevation: 1495 m
The lowest elevation: 370 m



Roads and Rivers



Climate & Location



Average annual temperature: **12.7 °C**



Average monthly temperature:
January 0.9 °C, July 24.4 °C



Average annual precipitation: **560 mm**



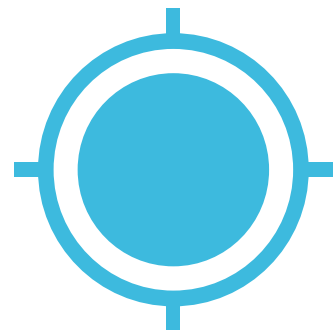
Absolute min: **-23 °C**



Absolute max: **40 °C**

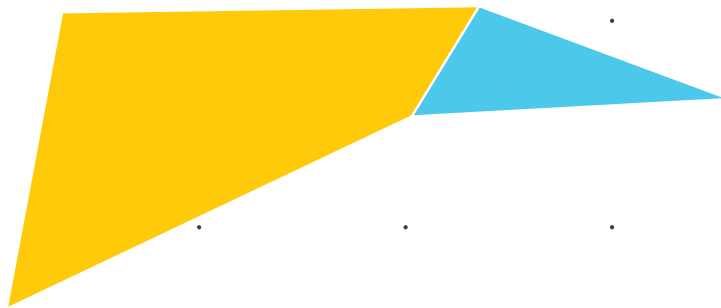
Coordinates:

**41°43'0"N, 44°47'0"E,
41.71667°N, 44.78333°E.**



Month	Air (t°C)	Precipitation (mm)	Sunshine (hours)	Relative Humidity (%)
January	0.9	16	96	73
February	2.5	22	100	69
March	7.2	31	150	66
April	13.4	52	180	62
May	18	86	250	64
June	21.9	72	269	60
July	25.2	48	271	56
August	24.1	37	267	57
September	20	42	203	64
October	15	42	161	73
November	8	35	94	77
December	3.1	22	42	76

Politics and Urban Administration



Politics and Urban Administration

Tbilisi is a self-governing city. Self-governance is exercised by a representative branch - Tbilisi City Assembly and an executive branch - Tbilisi City Hall.

The City Assembly is composed of 50 members from which 25 members are elected by the majoritarian and 25 members by the proportional electoral system.

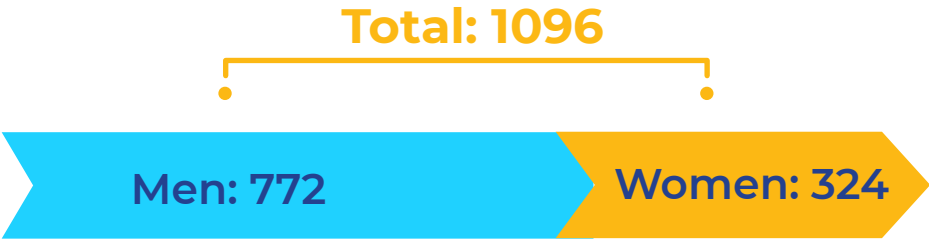
The term of the City Assembly as well as for Mayor's Office is 4 years. The last election was held in October 2017 in which the Mayor of Tbilisi was directly elected by the citizens of Tbilisi.

The Mayor is the highest-ranking official and the head of Tbilisi Government.

The government is made up of the Mayor, deputy mayors and heads of City Offices and governors of Tbilisi Administrative districts.

Tbilisi City Mayor is Mr. Kakha Kaladze

City Hall Staff 2018



People in Tbilisi



Population 2014



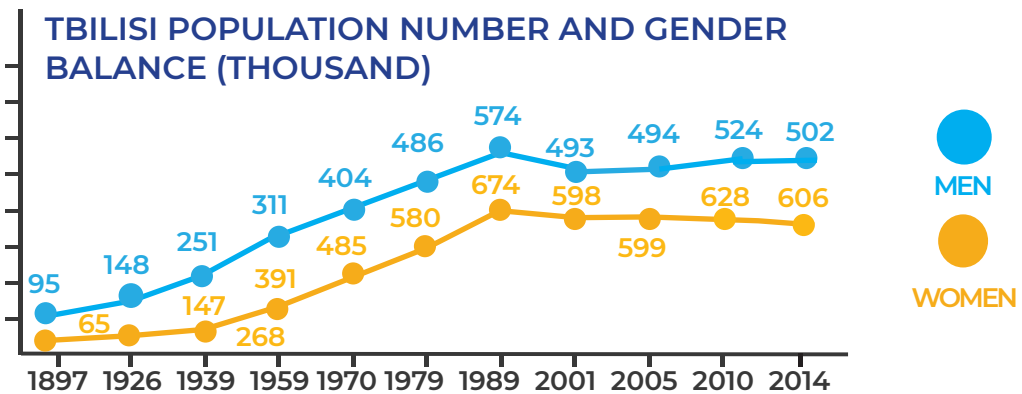
TOTAL
1 108.700



Vital Statistics 2017



Age Structure



Share of Tbilisi Population in Georgia

30%



Nationalities In Tbilisi

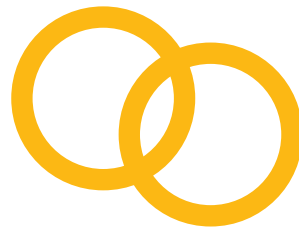
Azerbaijani, Armenian, Russian, Ossetian, Yezidi, Kist, Ukrainian, Greek, Assyrian and Others.

Average Age of Population: 36.6 y

Life Expectancy: 71 y



Marriage 2016: 7304
Divorce 2016: 3688



Median Age at First Marriage 2016: 30.1 y

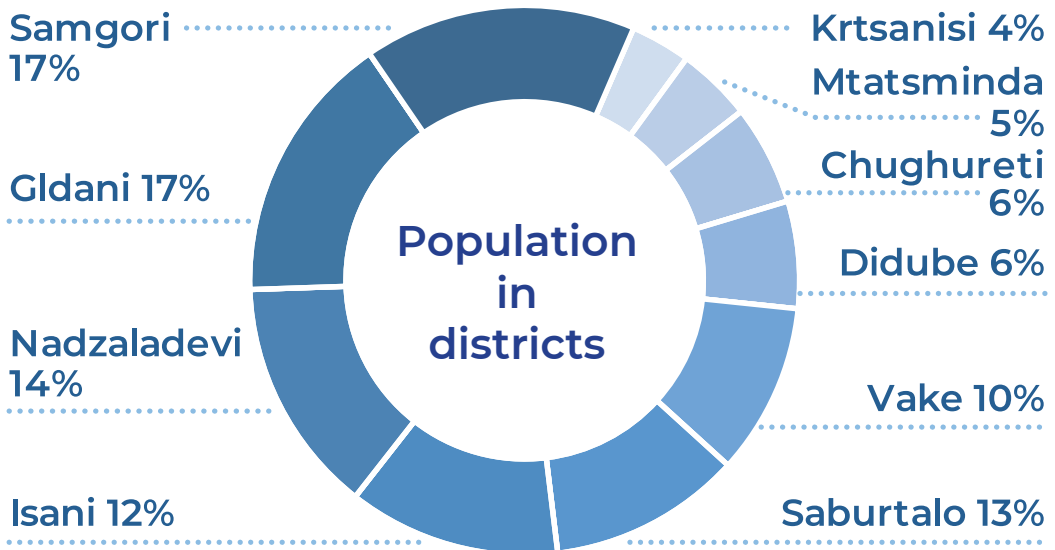
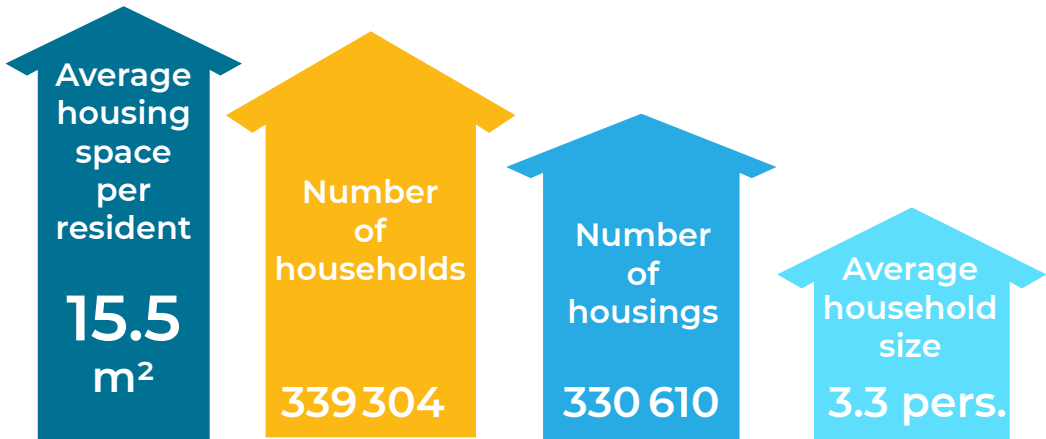


Multiple births 2016:

849

Share of multiple births:

3%



Living in Tbilisi



Economic Activity 2016

Labor force: **440 100 pers.**

Labor force share in population: **40%**

Employed: **343 100 pers. (78%)**

Unemployed: **97 000 pers. (22%)**

Outside labor force: **335 700**

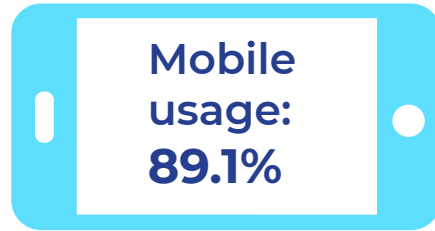
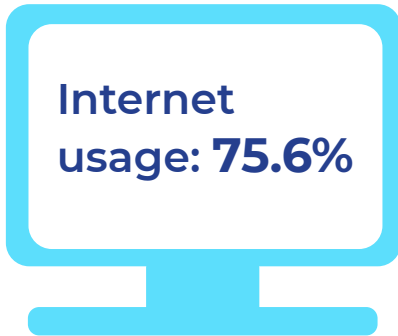
Labor force 15-24 y: **43 400 pers.**

Employed: **26 300 pers.**

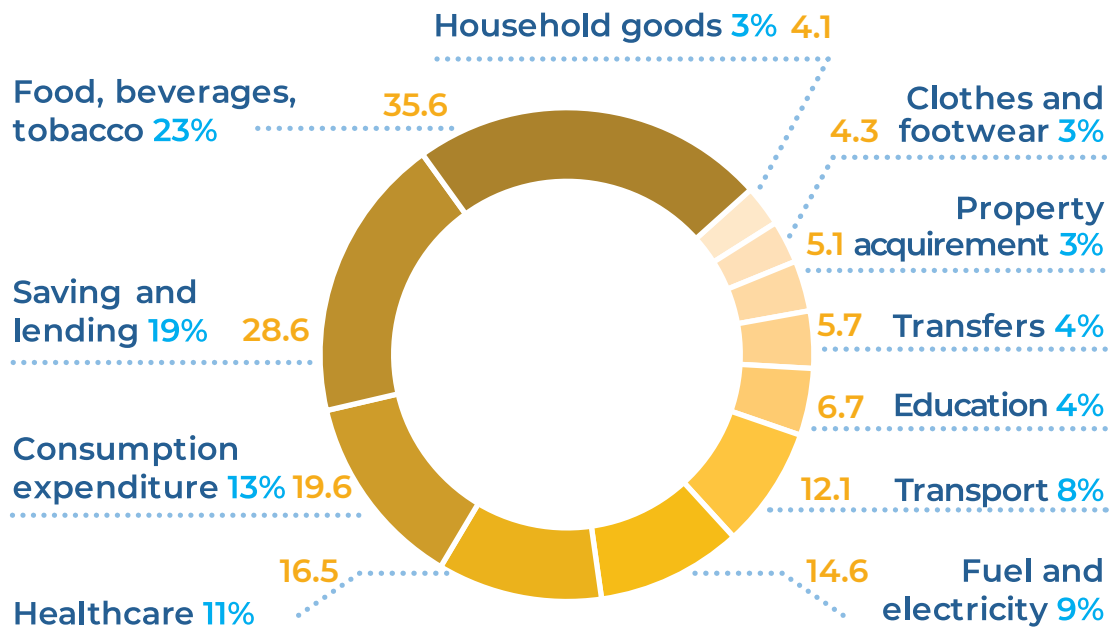
Average monthly salary
in Business Sector: **450 USD**

GINI index by revenues: **0.4**

Consumption by Population 2017:



Share of Expenditures per Capita 2016 (USD)



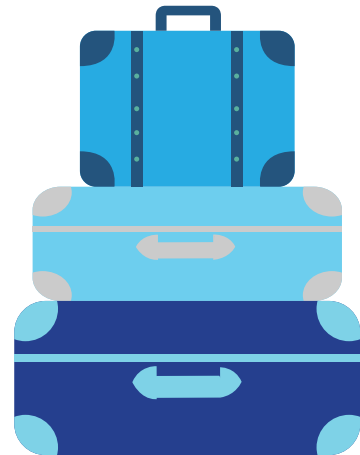
Tourism in Tbilisi



Visitors of Tbilisi according to Hotels Data 2016

Total: 1 113 484 pers.

Foreigners: 881 094 pers.



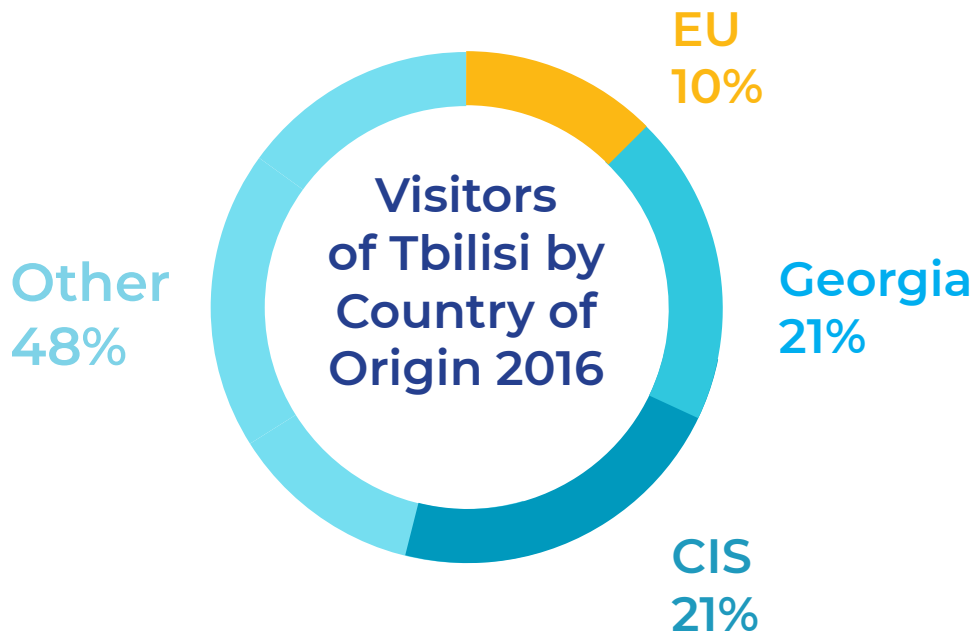
Visitors by Purpose of Arrival according to Hotels Data 2016

Leisure and Recreation	647 257 (58.1%)
------------------------	-----------------

Business Trip	274 054 (24.6%)
---------------	-----------------

Medical Treatment	4 768 (0.4%)
-------------------	--------------

Other	187 405 (16.8%)
-------	-----------------



Statistics of Hotels and Restaurants 2016

Turnover:	354.4 mln USD
Number of employed:	20 870 pers.
Average monthly salary:	303.3 USD
Investment in fixed assets:	85.8 mln USD

Culture & Leisure



Museums: 54

Visitors: **363 600**

Exhibitions: **329**

Guided tours: **2011**



Cinemas: 6

Screens:
30

Film premieres:
145

Theatres: 24

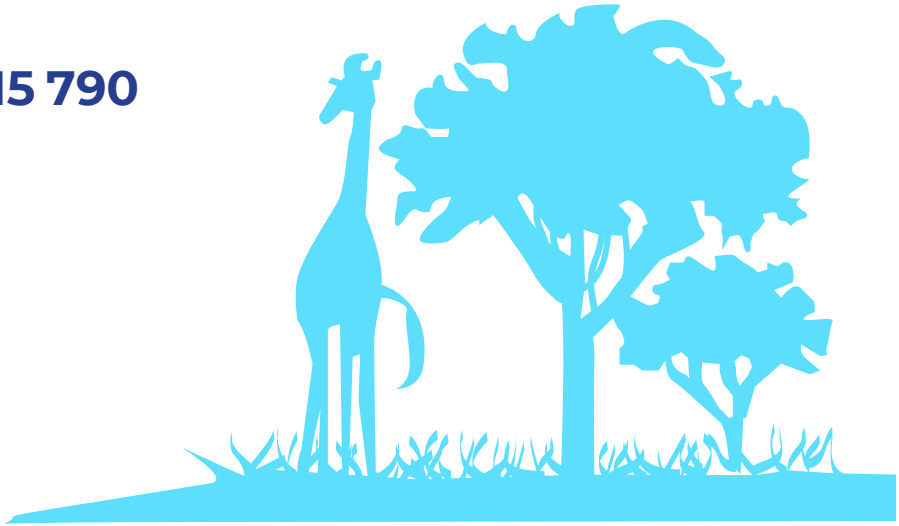
Attendance: **394 100**

Performances: **3 022**



Zoo:

Visitors: **115 790**

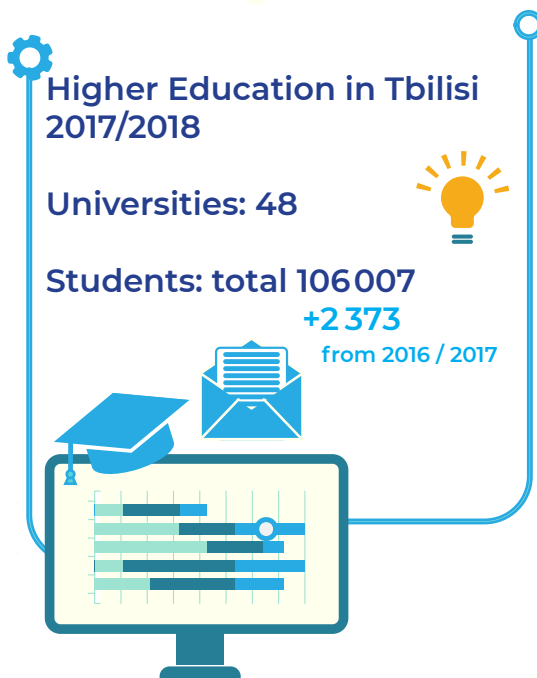
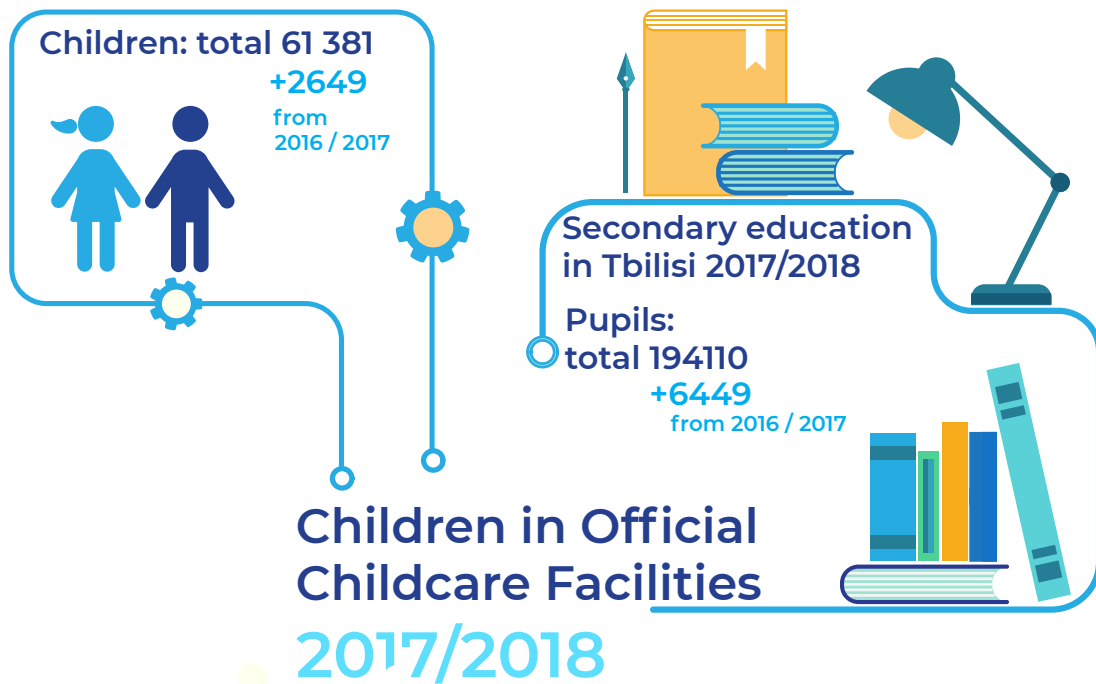


City-run Playgrounds

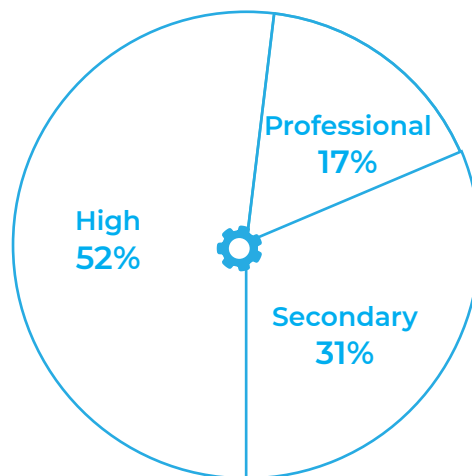


Education & Research





.....
Educational level of the population



Economy of Tbilisi



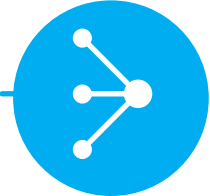


GDP per capita (basic): 5421.9 USD 2016



Share of GDP 2016

Tbilisi 49%
Georgia 51%



Wholesale and retail trade
26%

Other types of
services 18%

Transport and
Communication 16%

Industry 13%

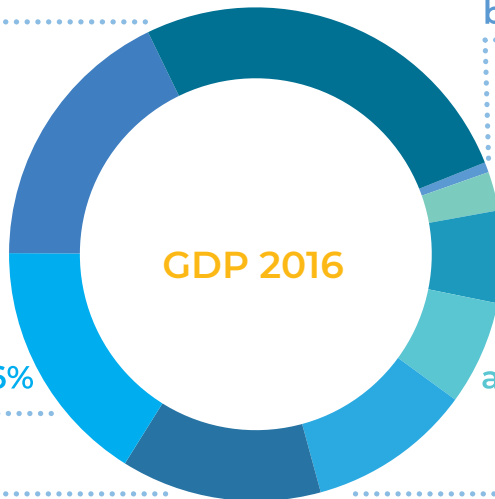
Processing of products
by households 1%

Education 2%

Health and
social work 6%

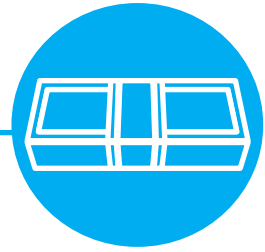
Public
administration 7%

Construction 11%



Average Exchange Rate 2017

USD - 2.50
EUR - 2.83

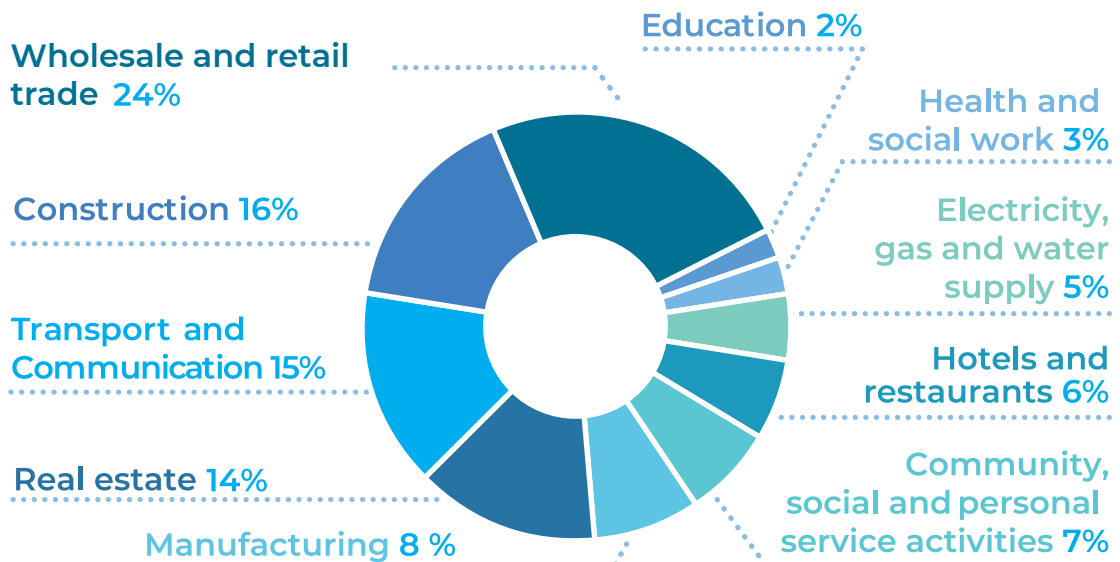


Inflation Rate 2017: 6.3%

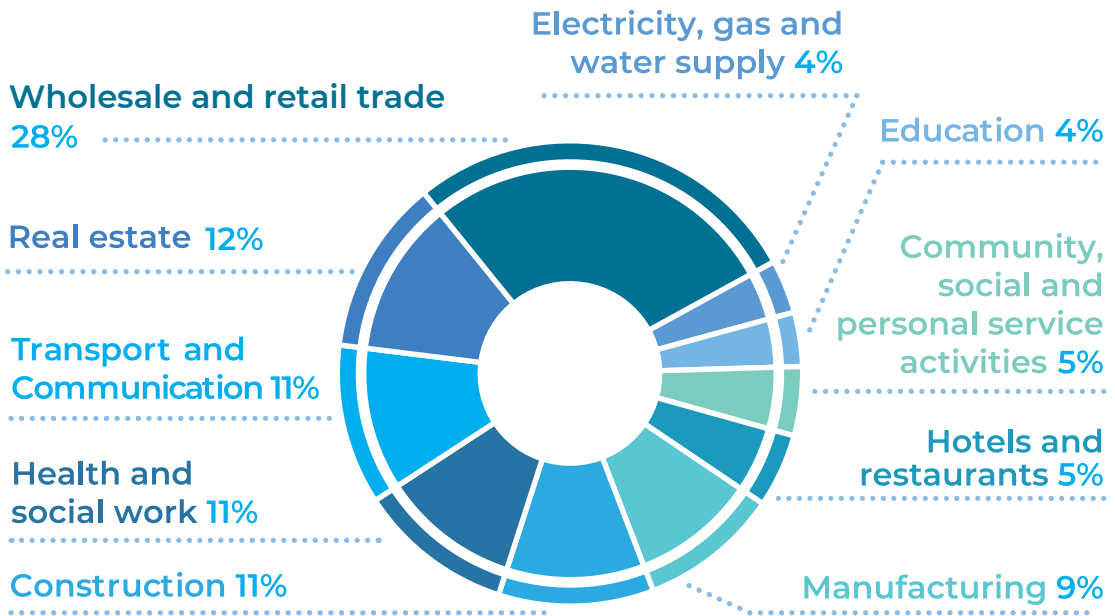
Share of Added Value in Business Sector 2016

Tbilisi 71%
Georgia 29%

Added Value by Sectors 2016



Number of Employed Persons by Sectors 2016



The Highest Average Salary

Construction Sector

590 USD



The Lowest Average Salary

Hotels and Restaurants

303 USD



Investment in Fixed Assets 2016 (mln USD)

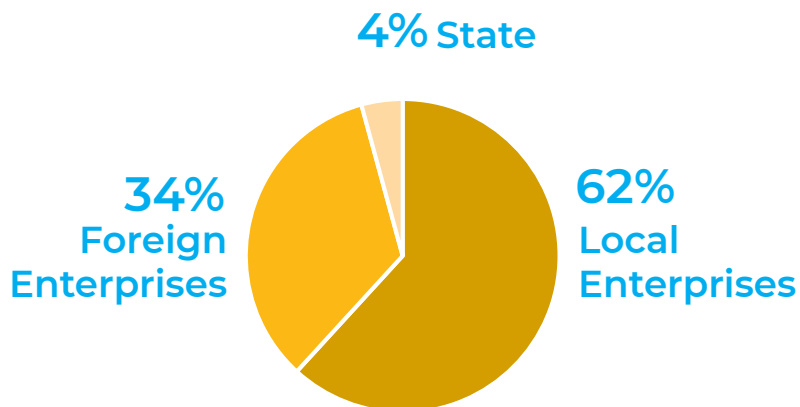
552.4

LOCAL
ENTERPRISES

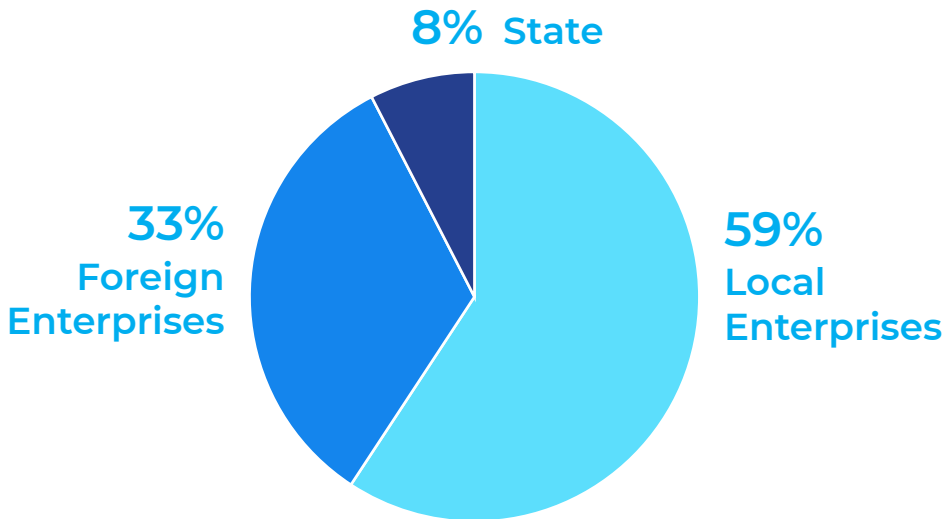
629.5

FOREIGN
ENTERPRISES

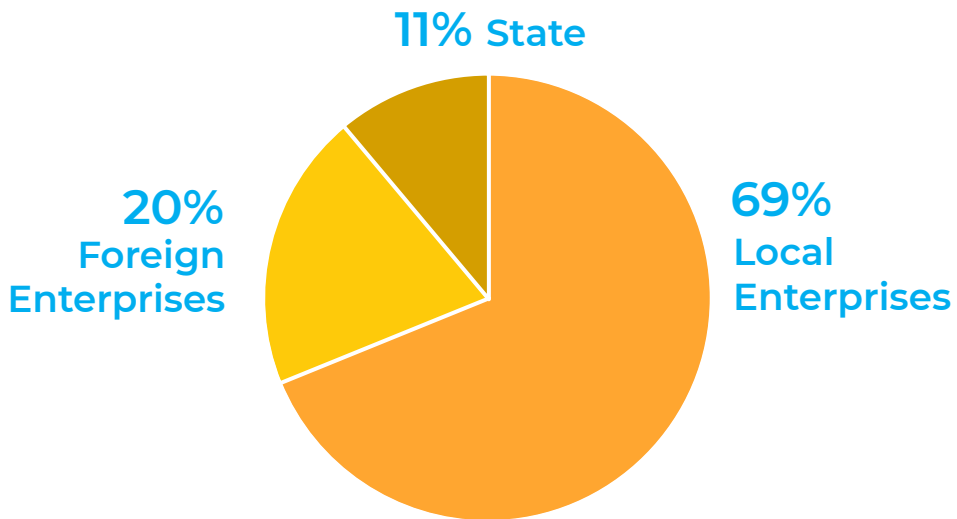
Turnover by Types of Ownership 2016



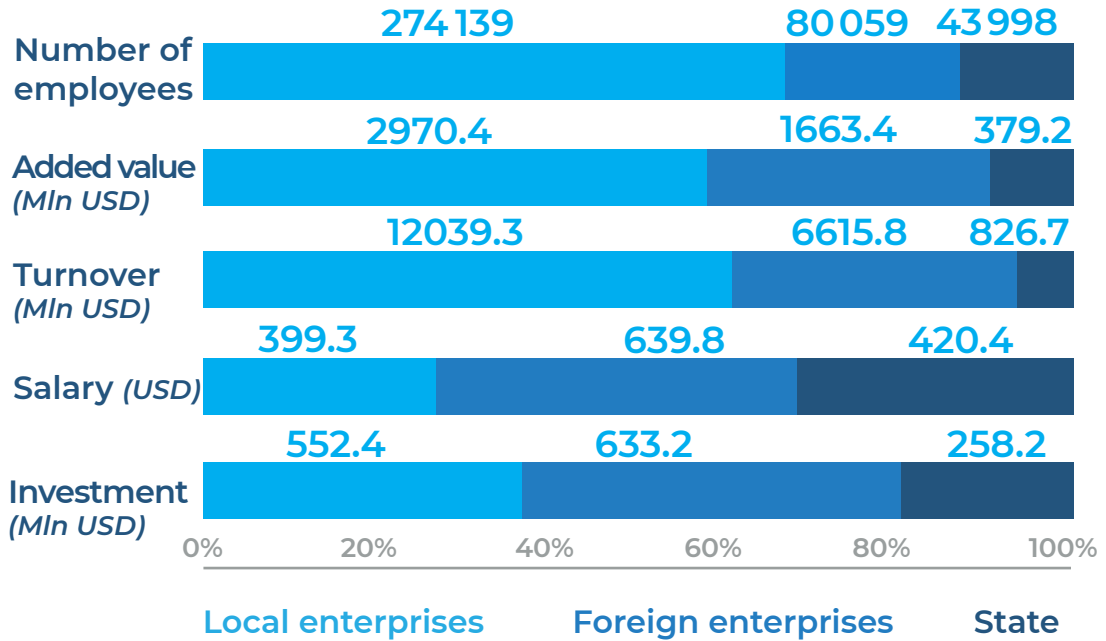
Added Value by Types of Ownership 2016



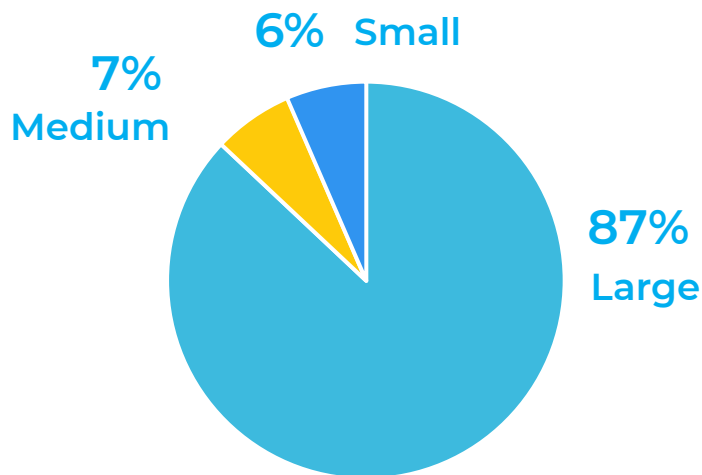
Number of Employed Persons by Types of Ownership 2016



Enterprise Data by Types of Ownership 2016



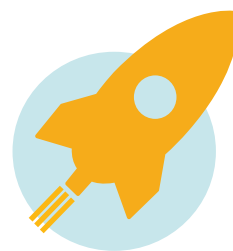
Investments in Fixed Assets by Enterprise Size 2016



Number of Registered Businesses by 2018

Totally or partly owned by women	88 705
Totally or partly owned by men	150 844
Not indicated	39 823

Start-ups 2017: +18 070

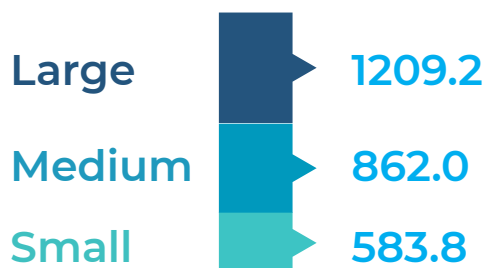


Foreign Branches in Tbilisi by March 1, 2018: 1 180

Number of Branches by countries

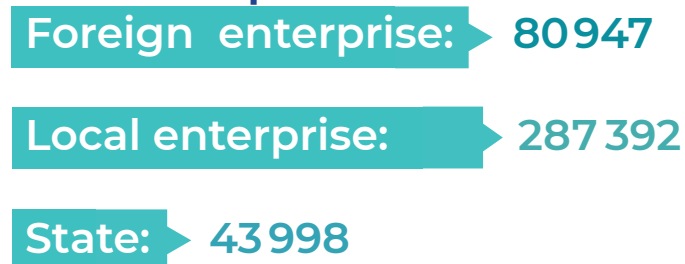
Turkey	162
Azerbaijan	130
UK	106
Russia	92
USA	91

Average Monthly Salary by Size of Enterprise 2016

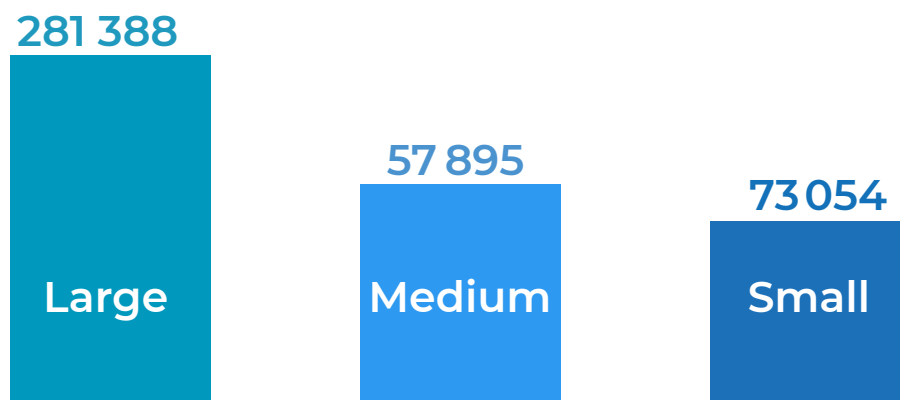


FDI 2017
1 457 mln USD

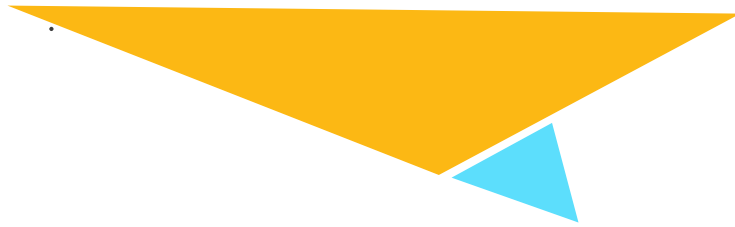
Number of Employed Persons by Type of Ownership 2016






Number of Employed Persons by Enterprise Size 2016

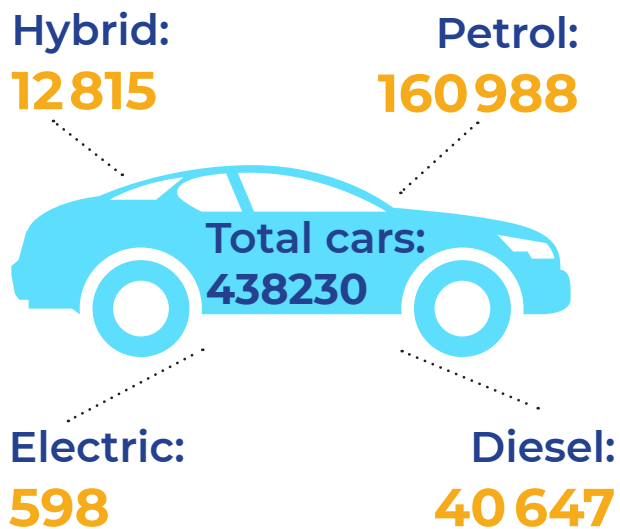


Traffic and Mobility



Public Transport 2017		Passengers	Network km	Number of lines
	Underground	113 827 037	53.7	2
	Buses	128 406 202	2450.5	101
	Cable car	1783 496	1.648	2

Private Traffic 2017



Number of Petrol stations: **761**

Tbilisi International Airport

2017 Total Numbers:



Airline

42



Passenger
flights

14,246



Cargo
flights

881



Arriving
passengers

1,589,901



Departing
passengers

1,574,374



International Cooperation



Twin and Partner cities



1975

Saarbrücken
www.saarbruecken.de



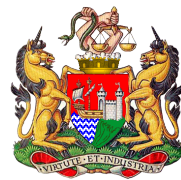
1987

Atlanta
www.atlantaga.gov



1977

Ljubljana.si
www.ljubljana.si



1988

Bristol
www.bristol.gov.uk



1979

Nantes
www.nantes.fr



1989

Bilbao
www.bilbao.net



1982

Innsbruck
www.innsbruck.at



1993

Baku
www.bakucity.az



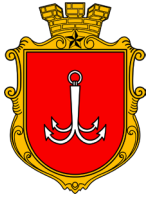
1987

Palermo
www.comune.palermo.it



1993

Minsk
www.minsk.gov.by



1996

Odessa
www.odessa.ua



2005

Astana
www.astana.kz



1996

Ankara
www.ankara.bel.tr



2006

Riga
www.riga.lv



1997

Athens
www.cityofathens.gr



2006

Istanbul
www.istanbul.gov.tr



1998

Jerusalem
www.jerusalem.muni.ilt



2007

Krakow
www.krakow.pl



1999

Kyiv
www.kmv.gov.ua



2009

Vilnius
www.vilnius.it



2009

Bucharest
www.pmb.ro



2012

Kharkiv
www.city.kharkov.ua



2010

Warsaw

www.e-warsaw.pl



2013

Lviv

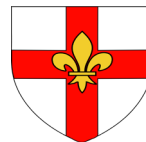
city-adm.lviv.ua



2011

Chisinau

www.Chisinau.md



2013

Lincoln

www.lincoln.ne.gov



2011

Budapest

www.budapest.hu



2015

Tehran

www.tehran.ir



2012

Cairo

www.cairo.gov.tr



2015

Prague

www.praha.eu



2012

Doha

www.baladiyay.qa



2016

Sofia

www.sofia.bg

Sources:

Tbilisi Municipality City Hall	www.tbilisi.gov.ge
Georgian National Statistics Agency	www.geostat.ge
Tbilisi Transport Company	www.ttc.com.ge
Georgian Water And Power	www.gwp.ge
Kindergarten Management Agency	www.kids.org.ge
The National Environmental Agency	www.meteo.gov.ge
Tbilisi Airport	www.tbilisiairport.com
National Agency of Public Registry	www.napr.gov.ge
Ministry of Internal Affairs	www.police.ge
Tbilisi Zoo	www.zoo.ge
2014 General Population Census	www.census.ge
The World Bank Ranking	www.doingbusiness.org
Index of Economic Freedom	www.heritage.org
Data and Tools for International Living	www.expatistan.com
The Good Country Index	www.goodcountry.org

Tbilisi Municipality City Hall
Economic Development Office



7 shartava str. 0160. Tbilisi. Georgia

economic@tbilisi.gov.ge

www.tbilisi.gov.ge



