

# WASTEWATER-BASED EPIDEMIOLOGICAL SURVEILLANCE OF THE SARS-COV-2

## — WEEKLY REPORT —

## RESULTS OF 25/10/2023

**Authors:** R. Janssens<sup>1</sup>, H. Maloux<sup>1</sup>, S. Hanoteaux<sup>1</sup>, V. Hutse<sup>1</sup>, L. Van Poelvoorde<sup>2</sup>, N. Roosens<sup>2</sup>, B. Verhaegen<sup>3</sup>, K. Van Hoorde<sup>3</sup>, K. Dierick<sup>3</sup>, K. Blot<sup>1</sup>, M. Lesenfants<sup>1\*</sup>

<sup>1</sup> Sciensano, Service Epidemiology of infectious diseases

<sup>2</sup> Sciensano, Transversal activities in Applied Genomics

<sup>3</sup> Sciensano, Service Foodborne pathogens

\*Contact and Info: [wastewater.info@sciensano.be](mailto:wastewater.info@sciensano.be)

In collaboration with:



# 1. Table of contents

|   |           |
|---|-----------|
| <b>1. Table of contents</b> .....                                 | <b>2</b>  |
| <b>2. Summary</b> .....   | <b>3</b>  |
| <b>3. Introduction</b> .....                                      | <b>4</b>  |
| <b>4. Methodology</b> .....                                       | <b>4</b>  |
| 4.1. SAMPLE COLLECTION AND ANALYSIS .....                         | 4         |
| 4.2. WASTEWATER RESULTS .....                                     | 5         |
| 4.3. ALERTING INDICATORS .....                                    | 5         |
| 4.4. CAUTION POINTS FOR THE RESULTS INTERPRETATION.....           | 6         |
| <b>5. Results</b> .....   | <b>7</b>  |
| 5.1. NATIONAL LEVEL .....   | 7         |
| 5.2. REGIONAL LEVEL.....  | 10        |
| 5.3. PROVINCIAL LEVEL .....                                       | 12        |
| 5.4. INDIVIDUAL CATCHMENT AREAS LEVEL.....                        | 14        |
| <b>6. Appendix – Areas classified by alerting indicator</b> ..... | <b>16</b> |

## 2. Summary

In the present work, the circulation of the SARS-CoV-2 virus in the environment is assessed based on three alerting indicators. The analysis of wastewater samples collected in 41 wastewater treatment plants covers 42% of the Belgian population. The results of the wastewater surveillance are a complementary source of information to the infection cases number. Indeed, the wastewater results do notably include all asymptomatic persons, and are independent of the testing strategy.

Here are the conclusions based on the latest results of October 25<sup>th</sup> 2023 (Week 43)<sup>1</sup>:

- At the national level: The number of areas in High Circulation has decreased, with 8 areas positive. The Increasing Trend indicator is stable, with 8 areas positive. Overall, the viral loads are at a moderate level compared to the 9th wave and stable.
  - At the regional level: The situation is similar in all regions.
  - At the provincial level: The High Circulation indicator is positive in 4 provinces: Brabant Wallon, Liège, Luxembourg and Namur, and was in 3 last week.
  - At the covered areas level: among the 41 areas covered, the number of treatment plants positive to the different indicators are 8 for the Increasing Trend indicator, 7 for the Fast Increase indicator, and 8 for the High Circulation indicator.
- 

The wastewater situation can be followed on a weekly basis on:

- The graphics available on the public [COVID-19 dashboard](#)
  - The epidemiological update published on Fridays by the Risk Assessment Group (RAG) after validation by the Risk Management Group (RMG) in [French](#) and [Dutch](#).
  - Further details on the methodology applied for the wastewater surveillance can be found in [the Appendix Methodology document \(access available online\)](#).
- 

---

<sup>1</sup> The wastewater surveillance is based on 41 areas. If areas were not sampled this week due to technical issues, they are listed in table in Appendix A5.

## 3. Introduction

The national wastewater-based surveillance of COVID-19 started in September 2020. The present report aims to assess the wastewater-based epidemiological situation in Belgium. It is updated weekly on Tuesday based on the concentration measured in the samples during the previous week.

The SARS-CoV-2 concentrations are measured twice per week in 41 wastewater treatment plants (WWTPs). The evolution of these concentrations is assessed in the present report thanks to three wastewater-based alerting indicators. The assessment is performed at 4 different spatial levels: national, regional, provincial, and the areas covered by the treatment plants.

Finally, the remaining sources of uncertainties are discussed together with their expected impacts on the interpretation of the wastewater results.

## 4. Methodology

### 4.1. SAMPLE COLLECTION AND ANALYSIS

Samples are collected twice a week in several wastewater treatment plants (WWTP) covering around 42% of the Belgian population: 36% in the Flemish region, 35% in the Walloon region, and nearly 100% in the Brussels region. Figure 1 shows the catchment areas covered by the WWTP located in areas with high population density. The catchment area of a WWTP corresponds to the geographical area from which the wastewater are collected.

Samples are collected on Mondays and Wednesdays by auto-samplers (24-hour composite) at the influent of WWTP. The analysis are distributed amongst 3 different laboratories to quantify the concentration of SARS-CoV-2 RNA. The results corresponding to the samples of the Mondays and Wednesdays are made publicly available on Wednesdays and Fridays, respectively.

Further details on the coverage, sampling plan, and analytical method can be found in [the Appendix Methodology document](#)

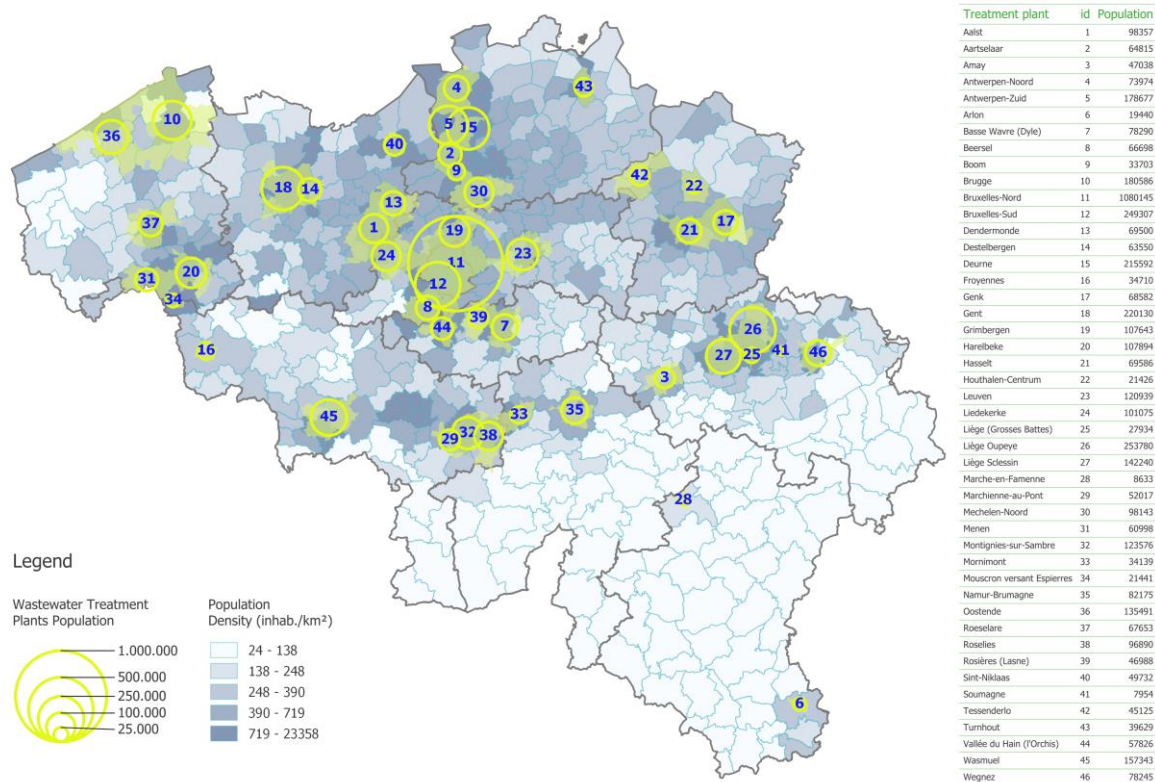


Figure 1: The population located in the areas covered by the wastewater treatment plants (highlighted in yellow) and the population density for each municipality (indicated by the blue scale). The sampling of Wegnez, Mouscron versant Espierres, Soumagne, Boom and Menen are discontinued.

## 4.2. WASTEWATER RESULTS

In order to account for possible dilution by rainy events and for the number of people living in the catchment area of each WWTP, a correction is applied on the viral concentration: the concentration is multiplied by the inlet flow and divided by the number of inhabitant of its respective WWTP and expressed by 100k inhabitant. The viral loads are expressed in copy/day/100k inhabitants.

The limit of quantification of the analytical method was estimated at 10 copies/ml.

## 4.3. ALERTING INDICATORS

To highlight the areas of possible concern, the three alerting indicators are assessed twice a week, based on viral loads (RNA copies/day/100k inhabitants):

1. The **Increasing Trend** indicator highlights the catchment areas where the viral loads have been increasing for more than 6 days. The indicator is computed based on the moving average on the past two weeks of the viral load.
2. The **Fast Increase** indicator highlights the catchment areas where the viral loads have rapidly increased for the last week. It corresponds to a situation where the moving average on the past 7 days of the viral load has increased faster than 70% per week if being above the estimated limit of quantification. The increasing slope is normalized for each treatment plant.
3. The **High Circulation** indicator highlights the catchment areas where the viral loads are high. It corresponds to a situation where the viral loads exceed half of the highest value recorded during the ninth wave (i.e. from 21th of November 2022 till first of January 2023).

The indicators were developed to monitor the different phases of an outbreak. the indicator Increasing Trend will be on alert first in the emerging phase. If the viral loads increase quickly, the Fast Increase indicator will then turn on alert. Finally, the viral loads may be sufficiently high to result in the High Circulation indicator to turn on alert.

#### **4.4. CAUTION POINTS FOR THE RESULTS INTERPRETATION**

The viral loads should not be directly compared between catchment areas, provinces, nor regions because analyses are conducted by three different laboratories. To mitigate this bias, the indicators are computed on normalized viral loads, allowing for comparison between the different areas. Further details are available in [the methodology document \(access online\)](#).

# 5. Results

## 5.1. NATIONAL LEVEL

Table 1 shows, at the national level, the results obtained on the last sample of October 25<sup>th</sup> 2023, week 43, compared to the ones obtained on October 18<sup>th</sup> 2023. In this table, any change in indicator positivity (i.e. if the value for any indicator has changed from 0 to 1 or from 1 to 0) is indicated in **coloured bold text**.

None of the indicators is positive at the national level.

**Table 1: Alerting indicators positive (1) or not (0) on October 25<sup>th</sup> 2023. Columns represent the population coverage of Belgium (Pop. coverage) and the three alerting indicators High Circulation (High), Fast Increase (Fast) and Increasing Trend (Incr.). The specifications of the four last columns are explained in the footnotes 1-4 below the table. Missing data is indicated with a “/”.**

| Country | Pop. coverage | High | Fast | Incr. | Norm. viral load (%) <sup>1</sup> | Mean viral load <sup>2</sup> | Norm. evol. (%/week) <sup>3</sup> | Incr. days <sup>4</sup> |
|---------|---------------|------|------|-------|-----------------------------------|------------------------------|-----------------------------------|-------------------------|
| Belgium | 42%           | 0    | 0    | 0     | 26                                | 0.68                         | 26                                | 3                       |

<sup>1</sup> : the viral load normalized with the maximum viral load measured in the corresponding catchment area during the ninth wave (i.e. from 21<sup>th</sup> of November 2022 till the first of January 2023).

<sup>2</sup> : the viral load computed on the mean of the replicate of the three targeted gene fragments as explained in section “3.2 Wastewater results”. The mean viral load is expressed in 10<sup>12</sup> copies/day/100k inhabitants.

<sup>3</sup> : the slope (%/week) of the past 7 days moving average of the viral load if the corresponding concentration is above the estimated limit of quantification.

<sup>4</sup> : the cumulative number of days of increase of the past 14 days moving average of the viral load.

The geographical location of the areas is presented in Figure 2 together with the status of the three indicators.

The number of areas in High Circulation has decreased, with 8 areas positive. The Increasing Trend indicator is stable, with 8 areas positive. Overall, the viral loads are at a moderate level compared to the 9th wave and stable.

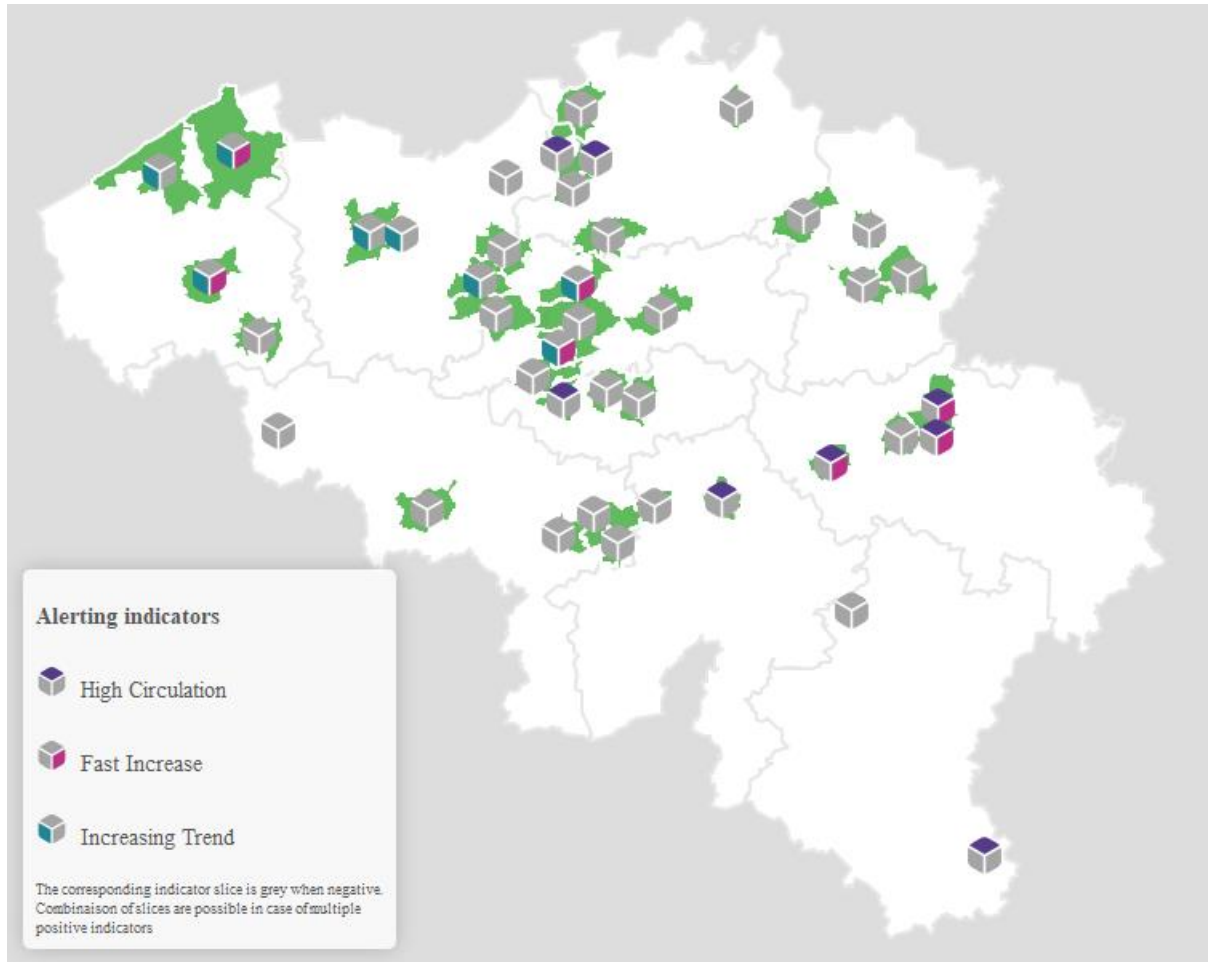


Figure 2: The geographical location of the covered areas with the corresponding status of the three alerting indicators: High circulation, Fast Increase and Increasing trend. If an indicator is positive its corresponding slice is displayed in its colour (see legend) whereas when negative the same slice is greyed out. The names of the covered areas with respect of their localization can be found in Figure 1.



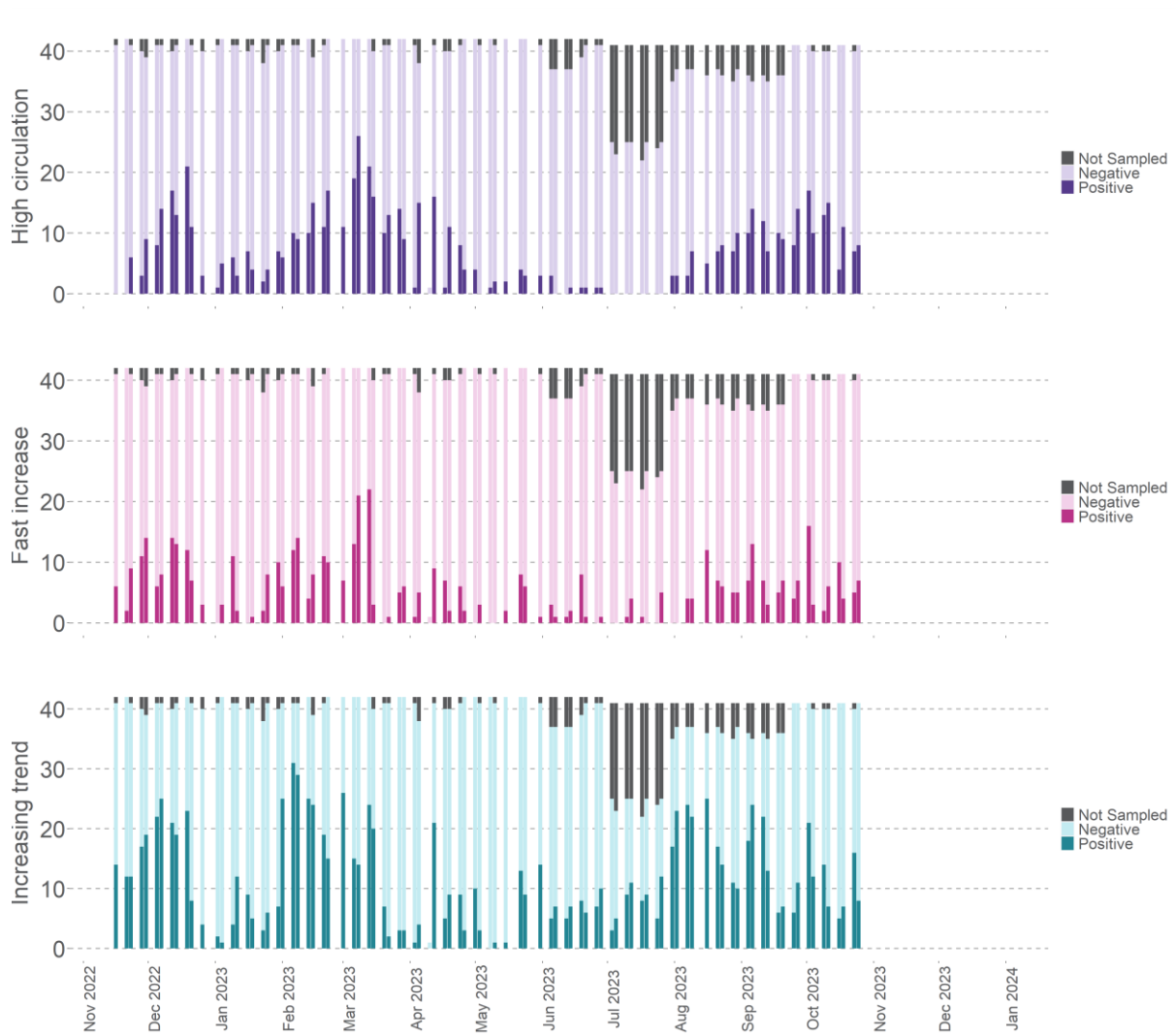


Figure 3: Number of areas having a positive alerting indicator (coloured bars), number of areas having a negative indicator (lighter coloured bars) and number of areas not sampled (greyed out bars). Latest results correspond to October 25<sup>th</sup> 2023, week 43.

## 5.2. REGIONAL LEVEL

Figure 4 shows, at the regional level, the viral loads in the wastewaters.

Two waves can be seen in Figure 4:

- The 9th wave starting on 21st November 2022.
- The 10th wave starting on 23rd January 2023.

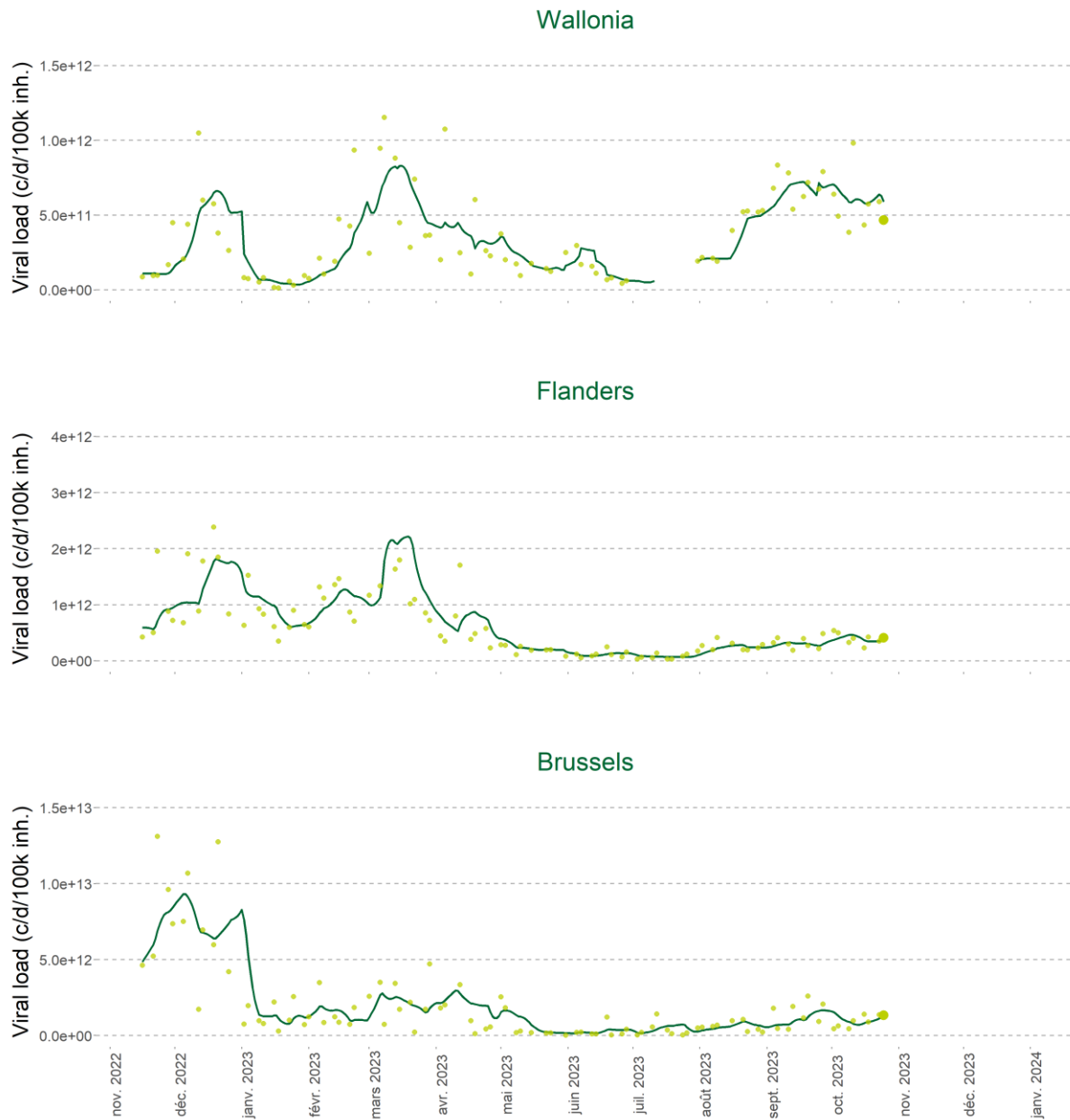


Figure 4: The SARS-CoV-2 RNA viral loads expressed as copies/days/100k inhabitants (based on the past two weeks moving average) for the three regions.

Table 2 shows, at the regional level, the results obtained on the last sample of Wednesday October 25<sup>th</sup> 2023, week 43. It allows to track the changes between the situation as of today (October 25<sup>th</sup> 2023) and the situation as of last week (October 18<sup>th</sup> 2023). Hereby, two distinct cases are taken into account:

1. If a region has at least one indicator fulfilled this week and it was not the case last week, its **name is displayed in bold** in the table.
2. If a region has at least one indicator fulfilled this week and if it also was the case last week, any change in indicator fulfilment (i.e. if the value for any indicator has changed from 0 to 1 or from 1 to 0) is indicated in **coloured bold text**.

None of the indicators is positive at the regional level.

**Table 2: Alerting indicators positive (1) or not (0) on October 25<sup>th</sup> 2023. Columns represent the population coverage of the regions (Pop. coverage) and the three alerting indicators High Circulation (High), Fast Increase (Fast) and Increasing Trend (Incr.). The specifications of the four last columns are explained in the footnotes 1-4 below the table. Missing data is indicated with a “/”.**

| Region   | Pop. coverage | High     | Fast | Incr. | Norm. viral load (%) <sup>1</sup> | Mean viral load <sup>2</sup> | Norm. evol. (%/week) <sup>3</sup> | Incr. days <sup>4</sup> |
|----------|---------------|----------|------|-------|-----------------------------------|------------------------------|-----------------------------------|-------------------------|
| Brussels | 100%          | 0        | 0    | 0     | 13                                | 1.33                         | 17                                | 3                       |
| Flanders | 36%           | 0        | 0    | 0     | 23                                | 0.41                         | 0                                 | 5                       |
| Wallonia | 35%           | <b>0</b> | 0    | 0     | 47                                | 0.47                         | 0                                 | 0                       |

<sup>1</sup> : the viral load normalized with the maximum viral load measured in the corresponding catchment area during the ninth wave (i.e. from 21<sup>th</sup> of November 2022 till the first of January 2023).

<sup>2</sup> : the viral load computed on the mean of the replicate of the three targeted gene fragments as explained in section “3.2 Wastewater results”. The mean viral load is expressed in 10<sup>12</sup> copies/day/100k inhabitants.

<sup>3</sup> : the slope (%/week) of the past 7 days moving average of the viral load if the corresponding concentration is above the estimated limit of quantification.

<sup>4</sup> : the cumulative number of days of increase of the past 14 days moving average of the viral load.

### 5.3. PROVINCIAL LEVEL

Table 3 shows, at the provincial level, the results obtained on the last sample of Wednesday October 25<sup>th</sup> 2023, week 43. It allows to track the changes between the situation as of today (October 25<sup>th</sup> 2023) and the situation as of last week (October 18<sup>th</sup> 2023). Hereby, two distinct cases are taken into account:

1. If a province has at least one indicator fulfilled this week and it was not the case last week, its **name is displayed in bold** in the table.
2. If a province has at least one indicator fulfilled this week and if it also was the case last week, any change in indicator fulfilment (i.e. if the value for any indicator has changed from 0 to 1 or from 1 to 0) is indicated in **coloured bold text**.

Table 3 shows, for each Province, the results associated with the samples of Wednesday October 25<sup>th</sup> 2023, for the three alerting indicators:

- The Increasing Trend indicator is positive in 2 provinces: Oost-Vlaanderen and West-Vlaanderen, and was in 1 last week.
- The Fast Increase indicator is not positive in any province, and was in 1 last week.
- The High Circulation indicator is positive in 4 provinces: Brabant Wallon, Liège, Luxembourg and Namur, and was in 3 last week.
- It should be noted that although the 50% threshold of viral load is not exceeded (in comparison to the highest level observed during the 9th wave), the viral load in the province of Antwerpen remains high (with 46.7%).

**Table 3: Alerting indicators positive (1) or not (0) on October 25<sup>th</sup> 2023. Columns represent the population coverage of the WWTPs within the Province (Pop. coverage) and the three alerting indicators High Circulation (High), Fast Increase (Fast) and Increasing Trend (Incr.). The specifications of the four last columns are explained in the footnotes 1-4 below the table. Missing data is indicated with a “/”.**

| Province               | Pop. coverage | High | Fast     | Incr.    | Norm. viral load (%) <sup>1</sup> | Mean viral load <sup>2</sup> | Norm. evol. (%/w) <sup>3</sup> | Incr. days <sup>4</sup> |
|------------------------|---------------|------|----------|----------|-----------------------------------|------------------------------|--------------------------------|-------------------------|
| Antwerpen              | 36%           | 0    | 0        | 0        | 46.7                              | 0.32                         | 0                              | 1                       |
| Brabant Wallon         | 44%           | 1    | 0        | 0        | 55.7                              | 0.41                         | 0                              | 0                       |
| Brussels               | 100%          | 0    | 0        | 0        | 13.0                              | 1.33                         | 17                             | 3                       |
| Hainaut                | 34%           | 0    | 0        | 0        | 24.1                              | 0.27                         | 0                              | 0                       |
| <b>Liège</b>           | 42%           | 1    | 0        | 0        | 60.8                              | 0.65                         | 61                             | 0                       |
| Limburg                | 23%           | 0    | 0        | 0        | 19.2                              | 0.25                         | 0                              | 1                       |
| Luxembourg             | 10%           | 1    | 0        | 0        | 86.5                              | 1.21                         | 0                              | 0                       |
| Namur                  | 25%           | 1    | 0        | 0        | 55.0                              | 0.38                         | 0                              | 0                       |
| <b>Oost-Vlaanderen</b> | 34%           | 0    | 0        | 1        | 17.4                              | 0.49                         | 0                              | 7                       |
| Vlaams-Brabant         | 43%           | 0    | 0        | <b>0</b> | 4.2                               | 0.41                         | 0                              | 6                       |
| West-Vlaanderen        | 41%           | 0    | <b>0</b> | <b>1</b> | 11.4                              | 0.53                         | 0                              | 7                       |

<sup>1</sup> : the viral load normalized with the maximum viral load measured in the corresponding catchment area during the ninth wave (i.e. from 21<sup>st</sup> of November 2022 till the first of January 2023).

- <sup>2</sup> : the viral load computed on the mean of the replicates of the three targeted gene fragments as explained in section "3.2 Wastewater results". The mean viral load is expressed in  $10^{12}$  copies/day/100k inhabitants.
- <sup>3</sup> : the slope (%/week) of the past 7 days moving average of the viral load if the corresponding concentration is above the estimated limit of quantification.
- <sup>4</sup> : the cumulative number of days of increase of the past 14 days moving average of the viral load.

## 5.4. INDIVIDUAL CATCHMENT AREAS LEVEL

Table 4 shows, at the catchment area level, the results obtained on the last sample of Wednesday October 25<sup>th</sup> 2023, week 43. It allows to track the changes between the situation as of today (October 25<sup>th</sup> 2023) and the situation as of last week (October 18<sup>th</sup> 2023). Hereby, three distinct cases are taken into account:

1. If an area has at least one indicator fulfilled this week and it was not the case last week, its **name is displayed in bold** in the table.
2. If an area has at least one indicator fulfilled this week and if it also was the case last week, any change in indicator fulfilment (i.e. if the value for any indicator has changed from 0 to 1 or from 1 to 0) is indicated in **coloured bold text**.

Any area which had at least one indicator fulfilled last week but not this week is listed below Table 4.

Here are the results associated with the samples of October 25<sup>th</sup> 2023:

- The Increasing Trend indicator is positive in 8 covered areas. Amongst these areas, the viral load is continually increasing since two or more weeks in 2 areas: Grimbergen (23 days) and Brussels-South (14 days). Further details can be found in Appendix A3. Last week, this indicator was positive in 7 covered areas.
- The Fast Increase is positive in 7 covered areas: Roeselare (422.1% increase per week), Grimbergen (205.8% increase per week), Amay (169.2% increase per week), Brugge (122.9% increase per week), Brussels-South (82% increase per week), Liege (Grosses Battes) (76.2% increase per week) and Liege Oupeye (73.8% increase per week) (see Appendix A2 for more details). Last week, this indicator was positive in 4 covered areas.
- The High Circulation indicator is positive in 8 covered areas. The full list of these areas can be found in Appendix A1. Last week, this indicator was positive in 11 covered areas.
- The wastewater results at the level of the local covered areas can be accessed online for each area on the [COVID-19 dashboard](#).

**Table 4: Alerting indicators positive (1) or not (0) on October 25<sup>th</sup> 2023. Columns represent the provinces, different WWTPs within the Provinces and the three alerting indicators High Circulation (High), Fast Increase (Fast) and Increasing Trend (Incr.). The specifications of the four last columns are explained in the footnotes 1-4 below the table. Missing data is indicated with a “P”.**

| Province        | WWTP                  | High | Fast     | Incr.    | Norm. viral load (%) <sup>1</sup> | Mean viral load <sup>2</sup> | Norm. evol. (%/week) <sup>3</sup> | Incr. days <sup>4</sup> |
|-----------------|-----------------------|------|----------|----------|-----------------------------------|------------------------------|-----------------------------------|-------------------------|
| Oost-Vlaanderen | <b>Aalst</b>          | 0    | 0        | 1        | 12.52                             | 0.31                         | 0.0                               | 9                       |
| Liège           | Amay                  | 1    | <b>1</b> | 0        | 168.01                            | 0.81                         | 169.2                             | 0                       |
| Antwerpen       | <b>Antwerpen-Zuid</b> | 1    | 0        | 0        | 53.49                             | 0.43                         | 0.0                               | 2                       |
| Luxembourg      | Arlon                 | 1    | 0        | <b>0</b> | 103.27                            | 1.43                         | 0.0                               | 0                       |
| West-Vlaanderen | <b>Brugge</b>         | 0    | 1        | 1        | 19.96                             | 0.91                         | 122.9                             | 9                       |
| Brussels        | Brussels-South        | 0    | 1        | 1        | 41.53                             | 2.90                         | 82.0                              | 14                      |
| Oost-Vlaanderen | Destelbergen          | 0    | <b>0</b> | <b>1</b> | 4.10                              | 0.11                         | 0.0                               | 9                       |
| Antwerpen       | Deurne                | 1    | 0        | 0        | 79.79                             | 0.44                         | 0.0                               | 0                       |
| Oost-Vlaanderen | <b>Gent</b>           | 0    | 0        | 1        | 18.51                             | 0.84                         | 26.7                              | 9                       |

| Province        | WWTP                          | High | Fast | Incr. | Norm. viral load (%) <sup>1</sup> | Mean viral load <sup>2</sup> | Norm evol. (%/week) <sup>3</sup> | Incr. days <sup>4</sup> |
|-----------------|-------------------------------|------|------|-------|-----------------------------------|------------------------------|----------------------------------|-------------------------|
| Vlaams-Brabant  | Grimbergen                    | 0    | 1    | 1     | 5.16                              | 0.75                         | 205.8                            | 23                      |
| Liège           | <b>Liege (Grosses Battes)</b> | 1    | 1    | 0     | 53.26                             | 0.65                         | 76.2                             | 0                       |
| Liège           | Liege Oupeye                  | 1    | 1    | 0     | 66.27                             | 0.78                         | 73.8                             | 0                       |
| Namur           | Namur-Brumagne                | 1    | 0    | 0     | 66.80                             | 0.31                         | 0.0                              | 0                       |
| West-Vlaanderen | Oostende                      | 0    | 0    | 1     | 2.30                              | 0.22                         | 0.0                              | 9                       |
| West-Vlaanderen | <b>Roeselare</b>              | 0    | 1    | 1     | 22.06                             | 0.74                         | 422.1                            | 9                       |
| Brabant Wallon  | Vallee du Hain (L'Orchis)     | 1    | 0    | 0     | 103.16                            | 0.81                         | 61.6                             | 0                       |

<sup>1</sup> : the viral load normalized with the maximum viral load measured in the corresponding catchment area during the ninth wave (i.e. from 21th of November 2022 till the first of January 2023).

<sup>2</sup> : the viral load computed on the mean of the replicates of the three targeted gene fragments as explained in section "3.2 Wastewater results"; The mean viral load is expressed in 10<sup>12</sup> copies/day/100k inhabitants.

<sup>3</sup> : the slope (%/week) of the past 7 days moving average of the viral load if the corresponding concentration is above the estimated limit of quantification.

<sup>4</sup> : the cumulative number of days of increase of the past 14 days moving average of the viral load.

The following areas had the corresponding indicator positive last week but not this week:

- Increasing Trend indicator: Froyennes, Leuven, Liedekerke and Montignies-sur-Sambre.
- Fast Increase indicator: Liedekerke.
- High Circulation indicator: Basse Wavre (Dyle), Froyennes, Genk, Marche-en-Famenne and Roselies.

Further details on covered area without positive indicators can be found in Table A4.

## 6. Appendix – Areas classified by alerting indicator

**Table A1: Areas for which the High Circulation indicator is positive (8 out of 41 on October 25<sup>th</sup> 2023).**

| Province       | WWTP                      | High | Fast | Incr. | Norm. viral load (%) <sup>1</sup> | Mean viral load <sup>2</sup> | Norm evol. (%/week) <sup>3</sup> | Incr. days <sup>4</sup> | Date Max cc <sup>5</sup> |
|----------------|---------------------------|------|------|-------|-----------------------------------|------------------------------|----------------------------------|-------------------------|--------------------------|
| Liège          | Amay                      | 1    | 1    | 0     | 168.01                            | 0.81                         | 169.2                            | 0                       | 15/03/2023               |
| Luxembourg     | Arlon                     | 1    | 0    | 0     | 103.27                            | 1.43                         | 0.0                              | 0                       | 30/08/2023               |
| Brabant Wallon | Vallee du Hain (L'Orchis) | 1    | 0    | 0     | 103.16                            | 0.81                         | 61.6                             | 0                       | 25/09/2023               |
| Antwerpen      | Deurne                    | 1    | 0    | 0     | 79.79                             | 0.44                         | 0.0                              | 0                       | 08/03/2023               |
| Namur          | Namur-Brumagne            | 1    | 0    | 0     | 66.80                             | 0.31                         | 0.0                              | 0                       | 27/09/2023               |
| Liège          | Liege Oupeye              | 1    | 1    | 0     | 66.27                             | 0.78                         | 73.8                             | 0                       | 08/03/2023               |
| Antwerpen      | Antwerpen-Zuid            | 1    | 0    | 0     | 53.49                             | 0.43                         | 0.0                              | 2                       | 15/03/2023               |
| Liège          | Liege (Grosses Battes)    | 1    | 1    | 0     | 53.26                             | 0.65                         | 76.2                             | 0                       | 25/09/2023               |

<sup>1</sup> : the viral load normalized with the maximum viral load measured in the corresponding catchment area during the ninth wave (i.e. from 21<sup>th</sup> of November 2022 till the first of January 2023).

<sup>2</sup> : the viral load computed on the mean of the replicates of the three targeted gene fragments as explained in section “3.2 Wastewater results”. The mean viral load is expressed in 10<sup>12</sup> copies/day/100k inhabitants.

<sup>3</sup> : the slope (%/week) of the past 7 days moving average of the viral load if the corresponding concentration is above the estimated limit of quantification.

<sup>4</sup> : the cumulative number of days of increase of the past 14 days moving average of the viral load.

<sup>5</sup> : date at which the measured viral load was the highest since the beginning of the ninth wave. If the date was between the 21<sup>th</sup> of November 2022 and the first of January 2023, the date is considered to be during the ninth wave and mentioned as such.

**Table A2: Areas for which the Fast Increase indicator is positive (7 out of 41 on the October 25<sup>th</sup> 2023).**

| Province        | WWTP                   | High | Fast | Incr. | Norm. viral load (%) <sup>1</sup> | Mean viral load <sup>2</sup> | Norm evol. (%/week) <sup>3</sup> | Incr. days <sup>4</sup> | Date Max cc <sup>5</sup> |
|-----------------|------------------------|------|------|-------|-----------------------------------|------------------------------|----------------------------------|-------------------------|--------------------------|
| West-Vlaanderen | Roeselare              | 0    | 1    | 1     | 22.06                             | 0.74                         | 422.1                            | 9                       | 05/10/2022               |
| Vlaams-Brabant  | Grimbergen             | 0    | 1    | 1     | 5.16                              | 0.75                         | 205.8                            | 23                      | 9 <sup>th</sup> wave     |
| Liège           | Amay                   | 1    | 1    | 0     | 168.01                            | 0.81                         | 169.2                            | 0                       | 15/03/2023               |
| West-Vlaanderen | Brugge                 | 0    | 1    | 1     | 19.96                             | 0.91                         | 122.9                            | 9                       | 04/01/2023               |
| Brussels        | Brussels-South         | 0    | 1    | 1     | 41.53                             | 2.90                         | 82.0                             | 14                      | 03/10/2022               |
| Liège           | Liege (Grosses Battes) | 1    | 1    | 0     | 53.26                             | 0.65                         | 76.2                             | 0                       | 25/09/2023               |
| Liège           | Liege Oupeye           | 1    | 1    | 0     | 66.27                             | 0.78                         | 73.8                             | 0                       | 08/03/2023               |

<sup>1</sup> : the viral load normalized with the maximum viral load measured in the corresponding catchment area during the ninth wave (i.e. from 21<sup>th</sup> of November 2022 till the first of January 2023).



<sup>2</sup> : the viral load computed on the mean of the replicates of the three targeted gene fragments as explained in section “3.2 Wastewater results”. The mean viral load is expressed in 10<sup>12</sup> copies/day/100k inhabitants.

<sup>3</sup> : the slope (%/week) of the past 7 days moving average of the viral load if the corresponding concentration is above the estimated limit of quantification.

<sup>4</sup> : the cumulative number of days of increase of the past 14 days moving average of the viral load.

<sup>5</sup> : date at which the measured viral load was the highest since the beginning of the ninth wave. If the date was between the 21th of November 2022 and the first of January 2023, the date is considered to be during the ninth wave and mentioned as such.

**Table A3: Areas for which the Increasing Trend indicator is positive (8 out of 41 on the October 25<sup>th</sup> 2023).**

| Province        | WWTP           | High | Fast | Incr. | Norm. viral load (%) <sup>1</sup> | Mean viral load <sup>2</sup> | Norm evol. (%/week) <sup>3</sup> | Incr. days <sup>4</sup> | Date Max cc <sup>5</sup> |
|-----------------|----------------|------|------|-------|-----------------------------------|------------------------------|----------------------------------|-------------------------|--------------------------|
| Vlaams-Brabant  | Grimbergen     | 0    | 1    | 1     | 5.16                              | 0.75                         | 205.8                            | 23                      | 9 <sup>th</sup> wave     |
| Brussels        | Brussels-South | 0    | 1    | 1     | 41.53                             | 2.90                         | 82.0                             | 14                      | 03/10/2022               |
| Oost-Vlaanderen | Aalst          | 0    | 0    | 1     | 12.52                             | 0.31                         | 0.0                              | 9                       | 08/03/2023               |
| West-Vlaanderen | Brugge         | 0    | 1    | 1     | 19.96                             | 0.91                         | 122.9                            | 9                       | 04/01/2023               |
| Oost-Vlaanderen | Destelbergen   | 0    | 0    | 1     | 4.10                              | 0.11                         | 0.0                              | 9                       | 17/10/2022               |
| Oost-Vlaanderen | Gent           | 0    | 0    | 1     | 18.51                             | 0.84                         | 26.7                             | 9                       | 08/03/2023               |
| West-Vlaanderen | Oostende       | 0    | 0    | 1     | 2.30                              | 0.22                         | 0.0                              | 9                       | 9 <sup>th</sup> wave     |
| West-Vlaanderen | Roeselare      | 0    | 1    | 1     | 22.06                             | 0.74                         | 422.1                            | 9                       | 05/10/2022               |

<sup>1</sup> : the viral load normalized with the maximum viral load measured in the corresponding catchment area during the ninth wave (i.e. from 21th of November 2022 till the first of January 2023).

<sup>2</sup> : the viral load computed on the mean of the replicates of the three targeted gene fragments as explained in section “3.2 Wastewater results”. The mean viral load is expressed in 10<sup>12</sup> copies/day/100k inhabitants.

<sup>3</sup> : the slope (%/week) of the past 7 days moving average of the viral load if the corresponding concentration is above the estimated limit of quantification.

<sup>4</sup> : the cumulative number of days of increase of the past 14 days moving average of the viral load.

<sup>5</sup> : date at which the measured viral load was the highest since the beginning of the ninth wave. If the date was between the 21th of November 2022 and the first of January 2023, the date is considered to be during the ninth wave and mentioned as such.

**Table A4: Areas for which none of the three indicators is positive (25 out of 41 on the October 25<sup>th</sup> 2023).**

| Province        | WWTP               | High | Fast | Incr. | Norm. viral load (%) <sup>1</sup> | Mean viral load <sup>2</sup> | Norm evol. (%/week) <sup>3</sup> | Incr. days <sup>4</sup> | Date Max cc <sup>5</sup> |
|-----------------|--------------------|------|------|-------|-----------------------------------|------------------------------|----------------------------------|-------------------------|--------------------------|
| Antwerpen       | Aartselaar         | 0    | 0    | 0     | 21.79                             | 0.11                         | 0                                | 0                       | 08/03/2023               |
| Antwerpen       | Antwerpen-Noord    | 0    | 0    | 0     | 24.42                             | 0.13                         | 0                                | 0                       | 08/03/2023               |
| Brabant Wallon  | Basse Wavre (Dyle) | 0    | 0    | 0     | 39.67                             | 0.26                         | -76.4                            | 0                       | 11/10/2023               |
| Vlaams-Brabant  | Beersel            | 0    | 0    | 0     | 1.04                              | 0.07                         | 0                                | 0                       | 9 <sup>th</sup> wave     |
| Brussels        | Brussels-North     | 0    | 0    | 0     | 6.37                              | 0.97                         | 2                                | 0                       | 9 <sup>th</sup> wave     |
| Oost-Vlaanderen | Dendermonde        | 0    | 0    | 0     | 41.3                              | 0.22                         | 0                                | 0                       | 06/02/2023               |

| Province        | WWTP                  | High | Fast | Incr. | Norm. viral load (%) <sup>1</sup> | Mean viral load <sup>2</sup> | Norm evol. (%/week) <sup>3</sup> | Incr. days <sup>4</sup> | Date Max cc <sup>5</sup> |
|-----------------|-----------------------|------|------|-------|-----------------------------------|------------------------------|----------------------------------|-------------------------|--------------------------|
| Hainaut         | Froyennes             | 0    | 0    | 0     | 37.25                             | 0.42                         | 0                                | 0                       | 11/10/2023               |
| Limburg         | Genk                  | 0    | 0    | 0     | 34.29                             | 0.52                         | 0                                | 0                       | 08/03/2023               |
| West-Vlaanderen | Harelbeke             | 0    | 0    | 0     | 1.85                              | 0.14                         | 0                                | 0                       | 9 <sup>th</sup> wave     |
| Limburg         | Hasselt               | 0    | 0    | 0     | 22.42                             | 0.21                         | 0                                | 2                       | 08/03/2023               |
| Limburg         | Houthalen-Centrum     | 0    | 0    | 0     | 1.31                              | 0.05                         | 0                                | 2                       | 9 <sup>th</sup> wave     |
| Vlaams-Brabant  | Leuven                | 0    | 0    | 0     | 7.11                              | 0.54                         | 0                                | 0                       | 9 <sup>th</sup> wave     |
| Vlaams-Brabant  | Liedekerke            | 0    | 0    | 0     | 1.74                              | 0.09                         | 0                                | 0                       | 9 <sup>th</sup> wave     |
| Liège           | Liege Sclessin        | 0    | 0    | 0     | 17.18                             | 0.36                         | 0                                | 0                       | 08/03/2023               |
| Luxembourg      | Marche-en-Famenne     | 0    | 0    | 0     | 48.58                             | 0.7                          | 0                                | 0                       | 27/09/2023               |
| Hainaut         | Marchienne-au-Pont    | 0    | 0    | 0     | 15.33                             | 0.33                         | 0                                | 0                       | 9 <sup>th</sup> wave     |
| Antwerpen       | Mechelen-Noord        | 0    | 0    | 0     | 13.4                              | 0.26                         | 0                                | 2                       | 08/03/2023               |
| Hainaut         | Montignies-sur-Sambre | 0    | 0    | 0     | 31.21                             | 0.31                         | 0                                | 0                       | 22/03/2023               |
| Namur           | Mornimont             | 0    | 0    | 0     | 26.65                             | 0.56                         | 11.6                             | 0                       | 18/09/2023               |
| Hainaut         | Roselies              | 0    | 0    | 0     | 29.84                             | 0.3                          | 0                                | 0                       | 06/09/2023               |
| Brabant Wallon  | Rosieres (Lasne)      | 0    | 0    | 0     | 23.94                             | 0.19                         | 0                                | 0                       | 06/09/2023               |
| Oost-Vlaanderen | Sint-Niklaas          | 0    | 0    | 0     | 6.01                              | 0.15                         | 0                                | 2                       | 9 <sup>th</sup> wave     |
| Limburg         | Tessenderlo           | 0    | 0    | 0     | 0                                 | 0                            | 0                                | 0                       | 15/03/2023               |
| Antwerpen       | Turnhout              | 0    | 0    | 0     | 1.15                              | 0.03                         | 0                                | 0                       | 01/03/2023               |
| Hainaut         | Wasmuel               | 0    | 0    | 0     | 15.11                             | 0.18                         | 0                                | 0                       | 9 <sup>th</sup> wave     |

<sup>1</sup> : the viral load normalized with the maximum viral load measured in the corresponding catchment area during the ninth wave (i.e. from 21th of November 2022 till the first of January 2023).

<sup>2</sup> : the viral load computed on the mean of the replicates of the three targeted gene fragments as explained in section "3.2 Wastewater results". The mean viral load is expressed in 10<sup>12</sup> copies/day/100k inhabitants.

<sup>3</sup> : the slope (%/week) of the past 7 days moving average of the viral load if the corresponding concentration is above the estimated limit of quantification.

<sup>4</sup> : the cumulative number of days of increase of the past 14 days moving average of the viral load.

<sup>5</sup> : date at which the measured viral load was the highest since the beginning of the ninth wave. If the date was between the 21th of November 2022 and the first of January 2023, the date is considered to be during the ninth wave and mentioned as such.

**Table A5: Areas for which the data are missing on October 25<sup>th</sup> 2023.**

| Province | WWTP |
|----------|------|
| none     | none |