

234,119 cases of COVID-19*

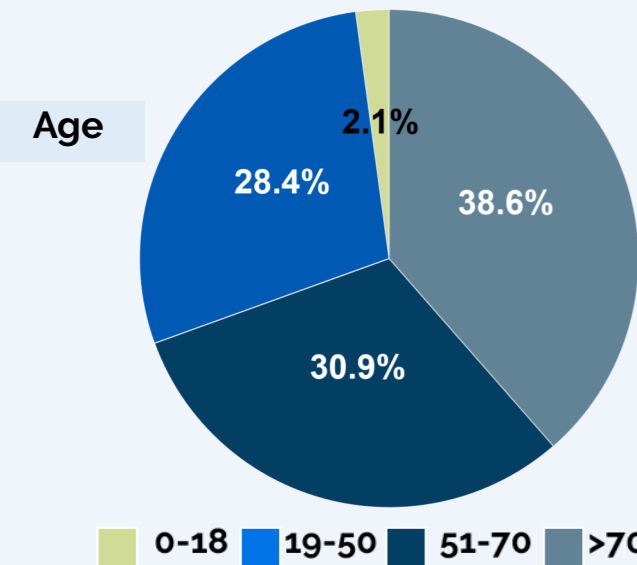
28,276 health-care workers[§]

32,354 associated deaths

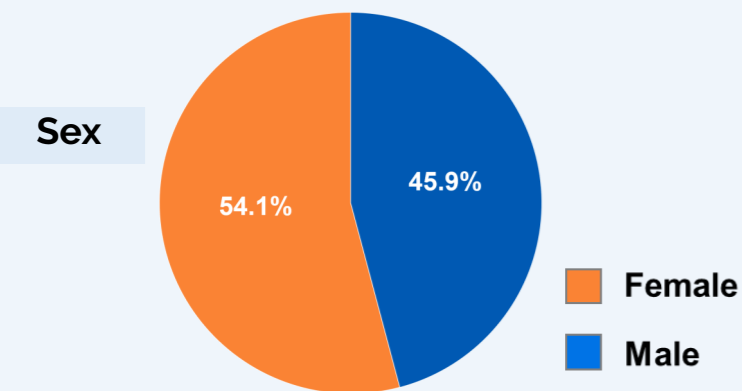
Integrated surveillance of COVID-19 in Italy

(Ordinanza n. 640 del 27/02/2020)

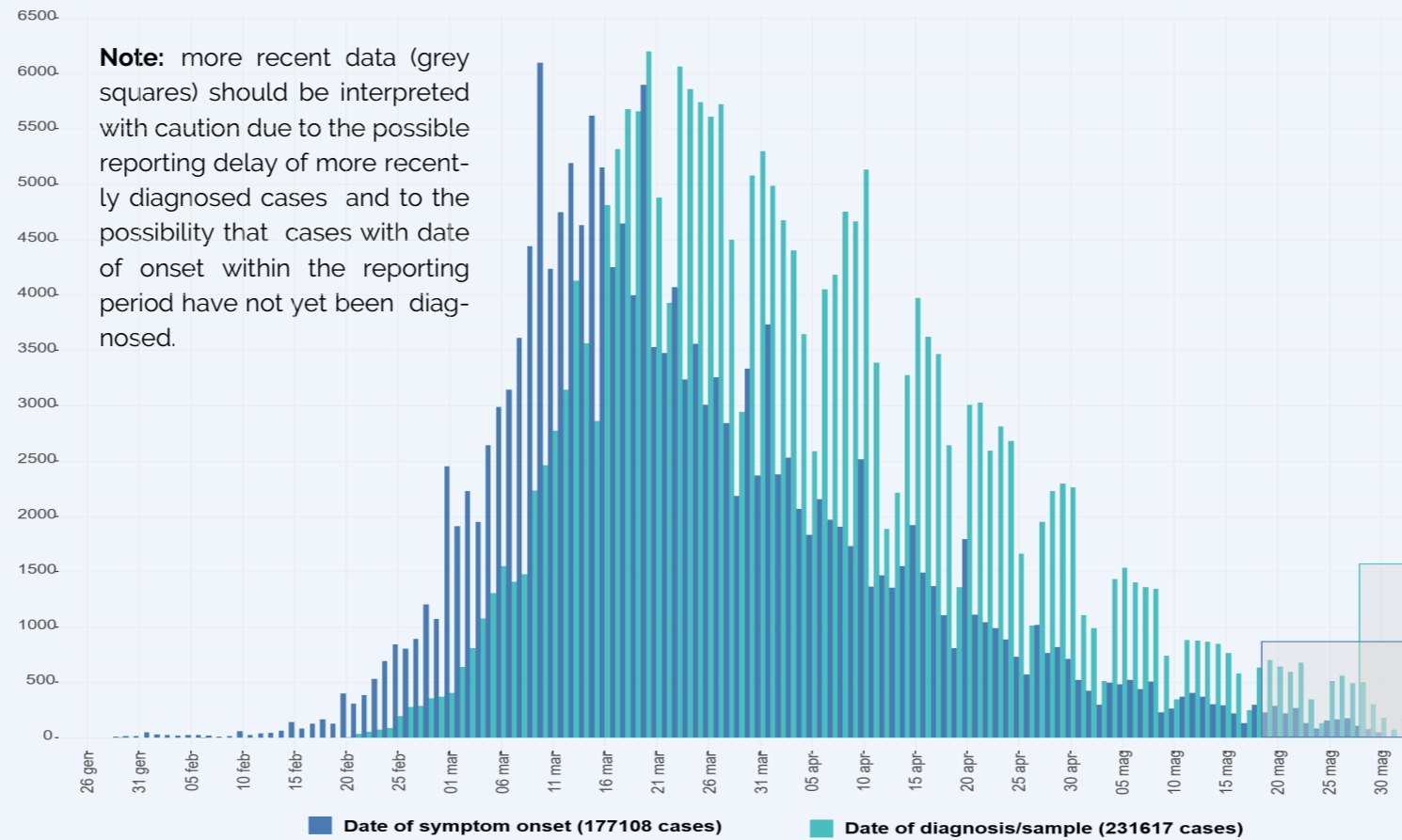
3 June 2020 UPDATE



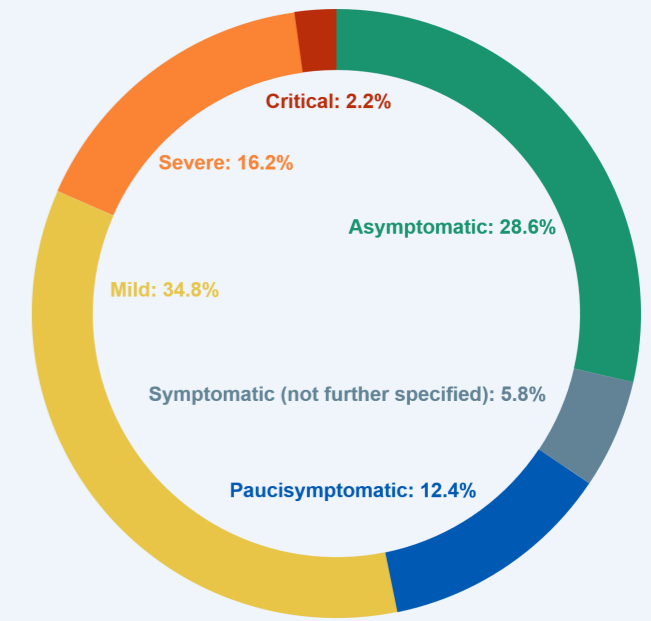
Median age of cases; **62 years**



Age (years)	Deaths [n (%)]	CFR [§]
0-9	5 (0%)	0.3%
10-19	0 (0%)	0%
20-29	15 (0%)	0.1%
30-39	63 (0.2%)	0.3%
40-49	279 (0.9%)	0.9%
50-59	1133 (3.5%)	2.7%
60-69	3307 (10.2%)	10.6%
70-79	8677 (26.8%)	25.9%
80-89	13233 (40.9%)	32.4%
>=90	5641 (17.4%)	29.9%
Not reported	1 (0%)	2.2%
Total	32354 (100%)	13.8%

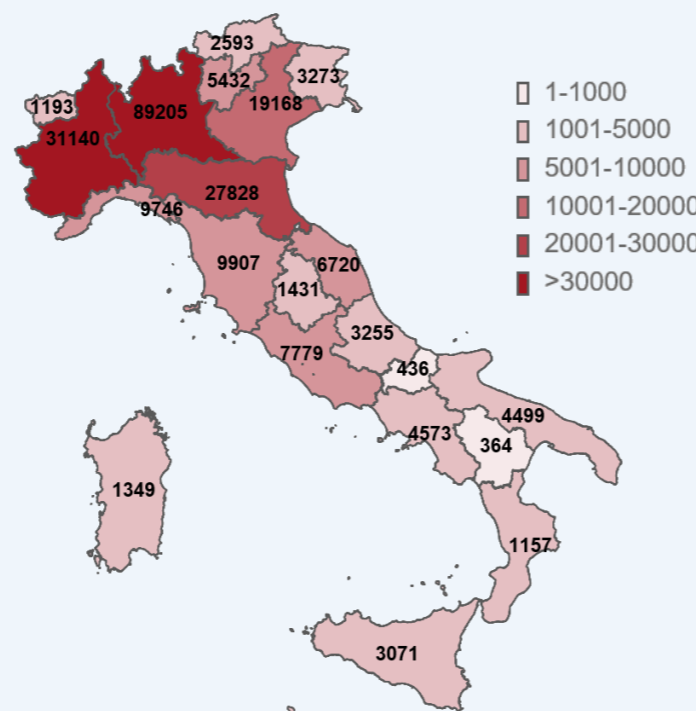


99% of the clinical samples processed were confirmed by the National Reference Laboratory at the Istituto Superiore di Sanità

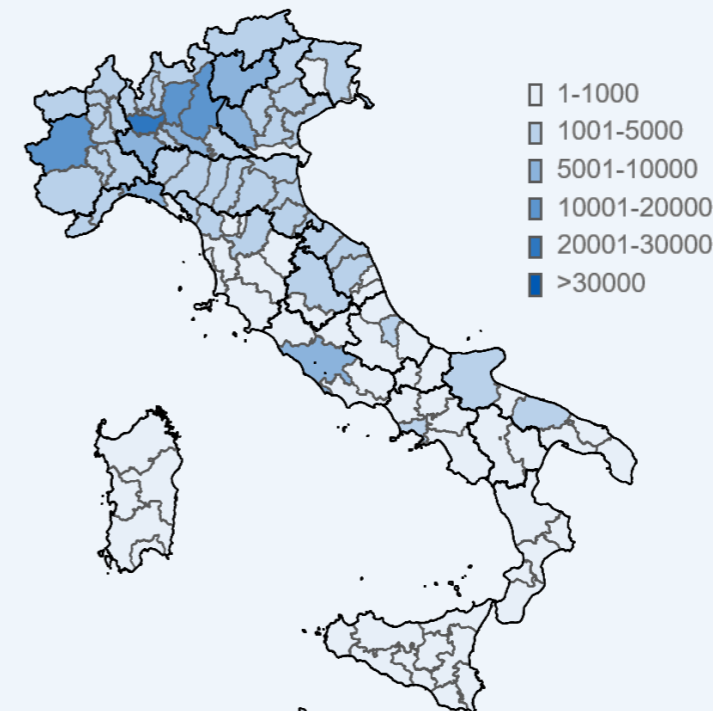


Data available for **31,845** cases

Total number of COVID-19 cases diagnosed by the Italian Regional Reference Laboratories



By Re-
gion/Autonomous Province of diagnosis



By province of residence
(data available for 231,167)

*The case definition considers as a confirmed case any person with laboratory confirmation of virus causing COVID-19 infection, irrespective of clinical signs and symptoms <https://www.ecdc.europa.eu/en/case-definition-and-european-surveillance-human-infection-novel-coronavirus-2019-ncov>

*ISS collects data on cases that tested positive for SARS-COV-2 infection diagnosed by all Italian Regions/Autonomous Provinces. Data could differ from aggregated data from the Italian Ministry of Health and the Italian Civil Protection. [§]The term "health-care worker" is based on the occupation and not on the place of exposure. [§]Case Fatality Rate