

1 **Results From the REsCue Trial: A Randomized Controlled Trial with**
2 **Extended-Release Calcifediol in Symptomatic Outpatients with COVID-19.**

3
4 **Short Title:** A Randomized Controlled Trial with Extended-Release Calcifediol in Symptomatic COVID-19
5 Outpatients.

6
7 Charles W. Bishop^a, Akhtar Ashfaq^a, Joel Z. Melnick^b, Enrique Vazquez-Escarpanter^c, Jonathan A.
8 Fialkow^d, Stephen A. Strugnell^a, John Choe^a, Kamyar Kalantar-Zadeh^e, Noah C. Federman^f, David Ng^g,
9 John S. Adams^g.

10 ^a Renal Division, OPKO Health, Miami, FL, USA, ^b SCDadvisor, Evanston, IL, USA; ^c Kendall South Medical
11 Center, Miami, FL, USA; ^d Cardiovascular Research Center of South Florida, Miami, FL, USA; ^e Division of
12 Nephrology, Hypertension and Kidney Transplantation, University of California Irvine, Orange, CA, USA; ^f
13 Department of Pediatrics, David Geffen School of Medicine, UCLA, Los Angeles, CA, USA; ^g WuXi Clinical
14 Development, Austin, TX, USA; ^h Department of Orthopaedic Surgery and Molecular, Cell and
15 Developmental Biology, UCLA, Los Angeles, CA, USA

16
17 **Article Type:** Clinical Trial

18 **Corresponding Author:**

19 Stephen A. Strugnell, PhD, Senior Director, Scientific Affairs

20 Renal Division, OPKO Health, Inc.

21 4400 Biscayne Blvd.

22 Miami, FL 33137 (USA)

23 sstrugnell@opko.com

24 **Word count for abstract:** 350

25 **Word count for article text:** 2,997

26 **Number of Tables and Figures:** 5

ABSTRACT

1
2 **Importance:** The benefit of vitamin D treatment for coronavirus disease 2019 (COVID-19)
3 remains unclear.

4 **Objective:** To investigate the effect of raising serum total 25-hydroxyvitamin D (25D) to 50-100
5 ng/mL with oral extended-release calcifediol (ERC) on time to symptom resolution in mild to
6 moderate COVID-19.

7 **Design, Setting, and Participants:** A multicenter, randomized, double-blind, placebo-controlled
8 study evaluated treatment of 160 outpatients with COVID-19 diagnosed between November
9 2020 and October 2021.

10 **Interventions:** Patients were treated for 4 weeks with ERC (30 mcg/capsule; 300 mcg on Days
11 1-3 and 60 mcg on Days 4-27) or placebo.

12 **Outcome Measures:** Primary endpoints were raising serum 25D to ≥ 50 ng/mL at Day 14 and
13 resolution time for five aggregated symptoms. Secondary endpoints included resolution time
14 for aggregated and individual symptoms as a function of serum 25D and changes in clinical
15 biomarkers.

16 **Results:** 171 subjects randomized, 160 treated and 134 (65 ERC and 69 placebo) retained.
17 Average age was 43 (range: 18-71); 59% female, 92% White, 80% Hispanic, 7% African-
18 American, 1% Other, 76% overweight, 40% obese, 26% comorbidities, mean baseline 25D of
19 37 ± 1 (SE) ng/mL. ERC increased mean 25D to 82 ± 4 ng/mL ($p < 0.001$) by Day 7; 88% of subjects
20 attained a level ≥ 50 ng/mL; the placebo group trended lower. Resolution time for five
21 aggregated symptoms was unchanged by ERC given that two composite non-respiratory

1 symptoms responded poorly. Prespecified analyses showed that respiratory symptoms tended
2 to resolve earlier when serum 25D levels reached ≥ 50 ng/mL, but statistical significance was
3 limited by small sample size and non-compliance: 25D increased in seven placebo subjects
4 (unauthorized supplementation) and none occurred in five ERC subjects (failure to dose). A
5 post-hoc composite of three respiratory symptoms (trouble breathing, chest congestion and
6 dry or hacking cough) resolved 3.0 days faster when 25D was elevated at Days 7 and 14
7 ($p < 0.05$); chest congestion resolved 4.0 days faster with 25D increases of ≥ 25 ng/mL ($p < 0.05$).
8 Safety concerns including hypercalcemia were absent with ERC treatment.

9 **Conclusions and Relevance:** ERC was effective in increasing serum 25D in outpatients with
10 COVID-19, which may have accelerated resolution of respiratory symptoms suggesting
11 mitigation of COVID-19 pneumonia risk, findings which warrant further study.

12

13 **Trial Registration:** ClinicalTrials.gov identifier NCT04551911

14

1 **Introduction**

2 Vitamin D repletion is purported to reduce the risk of infection with severe acute
3 respiratory syndrome coronavirus 2 (SARS-CoV-2)^{1,2}, mitigate severity of coronavirus disease
4 2019 (COVID-19)³ and accelerate recovery⁴. Sufficient serum total 25-hydroxyvitamin D (25D) is
5 postulated to potentiate COVID-19 vaccine effectiveness⁵, boost innate and control adaptive
6 immunity^{6,7}, and reduce post-infection cytokine storm⁶ and lung injury⁸. A serum 25D level of
7 approximately 50 ng/mL is proposed as the theoretical threshold for zero mortality from
8 COVID-19 based on regression analysis of decreasing deaths rates with rising serum 25D levels⁹.

9 The purported benefits of 25D repletion remain fully unsubstantiated in prospective
10 randomized controlled trials (RCTs). In one of only a few RCTs, administration of a single oral
11 dose of 200,000 IU of cholecalciferol (vitamin D₃) to patients with moderate to severe COVID-19
12 failed to shorten hospital stays despite raising mean serum 25D from a baseline of 21.2 to 44.4
13 ng/mL, diminishing support for vitamin D repletion¹⁰.

14 The present RCT sought to explore the benefit of raising serum 25D to at least 50 ng/mL,
15 a level considered by some to be of concern¹¹, on time to resolution of symptoms in COVID-19
16 outpatients. The working hypothesis was that controlled, progressive elevation of 25D to this
17 level with extended-release calcifediol (ERC) would safely boost the human innate immune
18 response to SARS-CoV-2 and accelerate recovery via intracrine production of calcitriol in
19 immune cells, such as macrophages, which co-express 25-hydroxyvitamin D-1 α -hydroxylase
20 (CYP27B1) and vitamin D receptor (VDR) in response to viral infection¹². Apt selection of
21 appropriate patient-reported outcomes as endpoints was hampered by the dearth of
22 information regarding which COVID-19 symptoms respond to vitamin D treatment, leading to

1 selection of a primary efficacy endpoint representing a “best guess” for finding a clinically
2 meaningful vitamin D signal. To compensate, this proof-of-concept study explored a broad
3 range of symptoms and used numerous prespecified and post-hoc analyses to characterize
4 potential signals.

5 **METHODS**

6 This multicenter trial (NCT04551911) titled “A Randomized, Double-Blind Placebo-
7 Controlled Study to Evaluate the Safety and Efficacy of **Royaldee** (calcifediol) **Extended-release**
8 **Capsules** to Treat Symptomatic Patients Infected with SARS-CoV-2 (**REsCue**)” enrolled
9 symptomatic COVID-19 outpatients from 10 sites across the United States and randomized
10 them in a 1:1 ratio for 4 weeks of treatment with ERC (30 mcg/capsule) or placebo and a 2-
11 week follow-up. ERC was chosen as the test intervention because it has been previously shown
12 to safely and effectively raise serum 25D to targeted levels of 50-100 ng/mL and suppress
13 elevated intact parathyroid hormone (iPTH) when administered at 30 mcg/day and escalating,
14 as needed, to 60 mcg/day in patients with stage 3 or 4 chronic kidney disease (CKD).¹³ Dosing
15 with ERC in the current study was designed to raise 25D more quickly, but in a controlled,
16 progressive manner, to this same target range well before Day 7, beginning with 300 mcg (10
17 capsules) on each of Days 1, 2 and 3 followed by 60 mcg (2 capsules) on Days 4 through 27.
18 Doses were administered at bedtime after fasting for three hours following dinner, and subjects
19 were instructed to remain fasting for 3 hours after dosing. Thirty-four COVID-19 symptoms
20 were self-reported daily using the FLU-PRO Plus[®] questionnaire, an outcome tool validated for
21 respiratory tract viral infections¹⁴. Symptoms were scored using multipoint scales ranging, most

1 frequently, from 0 to 4. Blood samples and safety assessments were obtained at baseline and 7-
2 day intervals.

3 **Participants**

4 All patients provided written informed consent before participation in the study.

5 Patients were enrolled between November 2, 2020 and August 27, 2021 after testing positive
6 for SARS-CoV-2 infection within the previous three days via reverse transcription polymerase
7 chain reaction (RT-PCR) or another substitutable FDA-authorized test. They were ≥ 18 years of
8 age, and had mild to moderate COVID-19 (absence of clinical signs indicative of more severe
9 disease such as oxygen saturation $< 94\%$ or respiration rate > 30 bpm). They were required to
10 have symptoms during screening with mean scores of ≥ 1.5 for each of the chest/respiratory
11 and body/systemic domains of the FLU-PRO Plus[®] questionnaire. They were instructed to forgo
12 use of vitamin D supplements during the study. Patients were excluded if: they were pregnant
13 or breastfeeding; had recently taken systemic glucocorticoid medications; had a recent history
14 of primary hyperparathyroidism, kidney stones, hypercalciuria or hypercalcemia, cardiovascular
15 disease, poorly controlled hypertension, arrhythmias, chronic granuloma-forming disease or
16 chronic liver disease; history in the past five years of multiple myeloma or carcinoma of the
17 breast, lung or prostate; any surgical or medical condition that might significantly alter the
18 absorption, distribution, metabolism, or excretion of vitamin D; ongoing treatment with
19 thiazide diuretics; history of hyperphosphatemia, hyperuricemia or gout; estimated glomerular
20 filtration rate (eGFR) < 15 mL/min/1.73m²; or serum calcium ≥ 9.8 mg/dL within the last three
21 months.

22

1 **Independent Oversight and Blinding**

2 The study was approved by Advarra (Columbia, MD), a central Institutional Review
3 Board (IRB), and overseen by an independent five-member Data Safety Monitoring Board
4 (DSMB) comprised of an expert in viral disease pathogenesis, a nephrologist, a biostatistician, a
5 pulmonary medicine expert and an endocrinologist experienced in clinical safety monitoring.
6 The monitor reduced the maintenance dose to one capsule per day at Day 21 if serum total 25D
7 exceeded 100 ng/mL or serum total calcium (corrected for low albumin) exceeded 10.5 mg/dL.
8 Subjects, study personnel and the sponsor (and its designees, with the exception of the DSMB
9 and three unblinded members of the data management team) were blinded until after
10 database lock to treatment assignments and to serum vitamin D metabolite laboratory data.

11 **Outcome Measures**

12 One primary endpoint was attainment of the targeted serum total 25D level by Day 14.
13 A second was time to resolution of five composite COVID-19 symptoms (trouble breathing,
14 chest congestion, dry or hacking cough, body aches or pains, chills or shivering). These
15 symptoms were part of the chest/respiratory and body/systemic domains of the FLU-PRO Plus[®]
16 questionnaire for which mean scores of ≥ 1.5 were required for enrollment. The composite
17 respiratory symptoms (trouble breathing, chest congestion, dry or hacking cough) were
18 considered indicative of pulmonary compromise. The other two composite symptoms (body
19 aches or pains, chills or shivering) were considered indicative of systemic inflammatory
20 responses to viral infection. An aggregate score for the primary endpoint related to five COVID-
21 19 symptoms was selected in view of the observed heterogeneity in COVID-19 symptom
22 profiles; not all subjects experienced the same symptoms or degree of symptom severity. A

1 score of ≤ 5 , or a mean of ≤ 1 for each composite symptom, was deemed appropriate because
2 the threshold of ≤ 1 described minor symptom severity (at worst “a little bit”) which seemed
3 unlikely to presage a poor outcome. Resolution was defined as a reduction in the total baseline
4 score (maximum of 20) for the five symptoms to or below 5 for a minimum of three consecutive
5 days. Secondary endpoints included time to resolution of each composite symptom and of
6 aggregated symptoms as a function of serum 25D.

7 Safety endpoints included adverse events detected by physical examinations, vital signs,
8 electrocardiograms, hematology and clinical chemistries. Special attention was given to
9 changes in serum calcium and phosphorus, and eGFR, which presage potential hypercalcemia,
10 hyperphosphatemia and kidney damage. Exploratory endpoints included changes in serum
11 1,25-dihydroxyvitamin D (1,25D) and LL37 cathelicidin antimicrobial peptide, and plasma iPTH.

12 **Laboratory Procedures**

13 BioReference Laboratories (Elmwood Park, NJ) analyzed serum total 25D by LC-MS,
14 plasma iPTH by electrochemiluminescence (Roche Elecsys) and serum total 1,25D by
15 chemiluminescence (DiaSorin Liason). Syneos Health (Quebec, Canada) analyzed serum LL37 by
16 ELISA (LSBio). The circulating neutrophil:lymphocyte ratio was obtained from the complete
17 blood cell count as routinely performed.

18 **Statistical Analysis**

19 Results from analysis of the per-protocol (PP) population rather than the full analysis set
20 (FAS) are presented herein as the study merely sought to identify a clinically meaningful vitamin
21 D signal in the treatment of COVID-19 outpatients and guide the design of a larger,
22 confirmatory follow-on study.

1 The two primary endpoints were tested hierarchically to maintain an overall one-sided
2 alpha level of 0.025. The first, attainment of serum 25D levels of ≥ 50 ng/mL, was assessed with
3 a Chi-square statistic. The second, number of days to resolution of five aggregated symptoms,
4 was analyzed with a Cox proportional hazards model with three covariates considered to have
5 possible influence on treatment efficacy: baseline FLU-PRO Plus[®] score for the five aggregated
6 symptoms, baseline serum 25D, and body weight. The log-rank test was used post-hoc to
7 compare Kaplan-Meier curves examining time to resolution of individual or aggregated
8 symptoms as a function of increase (versus lack thereof) in serum total 25D at both Days 7 and
9 14. Subjects who did not achieve symptom resolution prior to ending participation in the study
10 (3 to 19% depending on the symptom being evaluated; mean = 8.8%) were right censored after
11 the last day when data were obtained. Other efficacy endpoints were analyzed at each time
12 point using appropriate *t*-tests.

13 **RESULTS**

14 **Patients**

15 A total of 241 patients provided written informed consent and were screened for
16 eligibility (**Figure 1**). Of these, 171 met all selection criteria and were randomized to one of the
17 two treatment groups. The most common reason for failing screening was insufficient severity
18 of COVID-19 symptoms. Five subjects withdrew consent prior to dosing, and six failed to receive
19 the shipment of study drug, leaving 160 subjects (80 per treatment group) who received at
20 least one dose of study drug (safety population). Eight subjects assigned to ERC and 5 subjects
21 assigned to placebo achieved symptom resolution prior to dosing and were excluded from
22 analysis, leaving 147 subjects (72 ERC and 75 placebo) in the FAS. Thirteen subjects had major

1 deviations from the protocol (e.g., less than 80% dosing compliance as documented in daily
2 diaries) prior to resolution of symptoms and were excluded from the PP population, which
3 consisted of 134 subjects (65 ERC and 69 placebo).

4 The average age of PP subjects was 43 (range: 18-71); 59% were female, 92% White, 7%
5 African-American, 1% Other, 76% were overweight and 40% obese based on body mass index
6 (BMI) greater than 25 and 30, respectively. Approximately 26% had comorbidities, most
7 commonly hypertension. Baseline mean serum total 25D was 37 ± 1 (SE) ng/mL, with 95% or
8 72% of subjects having values of at least 20 or 30 ng/mL, respectively, two thresholds widely
9 viewed as lower limits of adequacy^{11,15}. Baseline characteristics of the PP population are shown
10 in **Table 1**; no significant differences were evident between treatment groups.

11 **Outcomes**

12 Mean serum 25D levels increased with ERC treatment to 82 ± 4 (SE) ng/mL ($p < 0.001$) by
13 Day 7 and remained elevated for the duration of the study, with 88% of subjects attaining the
14 targeted level of ≥ 50 ng/mL (**Figure 2A**). Attainment of this endpoint was unaffected by body
15 weight or BMI. In contrast, mean serum 25D trended lower with placebo treatment. Ten
16 subjects receiving ERC required dose reductions at Day 21 due to 25D levels rising above 100
17 ng/mL. ERC treatment produced similar mean increases in serum 25D in each baseline 25D
18 category (**Figure 2B**).

19 The time to resolution for the five aggregated COVID-19 symptoms was statistically
20 unchanged by ERC given that two composite non-respiratory symptoms responded poorly
21 (**Figure 3A**). Prespecified analyses showed that the other three respiratory symptoms tended to
22 resolve sooner, for example, chest congestion (**Figure 3B**), when serum 25D levels reached at

1 least 50 ng/mL; however, significance of the changes was limited by small sample size and
2 dosing non-adherence: 25D increases occurred in seven placebo subjects (unauthorized
3 supplementation) and none occurred in five ERC subjects (failure to dose). These three
4 respiratory symptoms (trouble breathing, chest congestion and dry or hacking cough), when
5 analyzed together post-hoc, resolved 3.0 days faster (**Figure 3C**) on average when serum 25D
6 was elevated above baseline at Days 7 and 14 ($p<0.05$); chest congestion resolved 3.4 (**Figure**
7 **3D**) days faster ($p<0.05$). Resolution time for chest congestion was accelerated by 4.0 days with
8 25D increases of at least 25 ng/mL ($p<0.05$).

9 The sample size of the study was too small to evaluate the effect of treatment on
10 incidence of urgent care visits, oxygen saturation below 94% and hospitalizations. Changes in
11 laboratory measurements during treatment are summarized in **Table 2**. Serum total 1,25D,
12 serum LL37 and the neutrophil:lymphocyte ratio all trended upward with ERC treatment and
13 downward with placebo, while serum calcium and phosphorus, plasma iPTH and eGFR
14 remained stable. Mean serum calcium in the ERC group was unaffected by baseline or post-
15 treatment serum 25D level. Episodes of hypercalcemia or hyperphosphatemia were not
16 observed, even in subjects whose serum 25D exceeded 100 ng/mL. Other safety endpoints
17 showed no clinically meaningful changes with treatment.

18 **DISCUSSION**

19 This randomized, double-blind, placebo-controlled clinical trial showed that ERC
20 treatment was effective in increasing serum total 25D to levels of at least 50 ng/mL, which may
21 have yielded significantly shorter resolution times for three aggregated respiratory symptoms
22 (trouble breathing, chest congestion and dry or hacking cough) commonly observed in patients

1 with mild to moderate COVID-19. Of these symptoms, chest congestion showed the greatest
2 response, resolving 3.4 to 4.0 days earlier, depending on the degree to which 25D was elevated.
3 These findings suggest that raising serum 25D with ERC may mitigate, without adverse effects,
4 the risk of COVID-19 pneumonia.

5 A possible mechanism¹² underlying these findings is induction of endogenous human
6 antimicrobial peptides, such as LL37, that can boost the host's immune response to the virus.
7 Serum LL37, which trended upwards in this study, is the product of the cathelicidin
8 antimicrobial peptide (*CAMP*) gene and is secreted from monocyte/macrophages, dendritic
9 cells and neutrophils in response to viral or bacterial infection. The innate immune response is
10 initiated and perpetuated in antigen-presenting cells by pathogen-associated molecular
11 patterns derived from the viral capsid and other unique signatures of the infecting virus
12 interacting with pattern recognition receptors (e.g., Toll-like receptors [TLR]). TLR activation
13 leads to up-regulation of expression of the intracellular CYP27B1 and VDR; the former event up-
14 regulates the enzymatic conversion of the prohormone calcifediol to its active metabolite,
15 calcitriol, which can then engage the VDR in an intracrine mode and control *CAMP* gene
16 expression. Only in higher primates, including man, is the *CAMP* gene regulated by calcitriol¹⁷.

17 Serum 25D of approximately 50 ng/mL or more is thought sufficient to support
18 intracellular generation of 1,25D, activation of the VDR, transactivation of the *CAMP* gene and
19 production and release of LL37 to combat SARS-CoV-2 proliferation in the host¹⁶. Serum levels
20 of 1,25D and LL37 were observed to trend upward with ERC treatment, reflecting their elevated
21 intracellular concentrations in the inflammatory microenvironment of the lung. The circulating
22 neutrophil:lymphocyte ratio, a purported biomarker of disease activity in COVID-19¹⁸, went up

1 in this study, but declined significantly with immediate-release calcifediol (IRC) in a previously
2 reported RCT¹⁹ conducted in patients hospitalized with more severe COVID-19. Aside from this
3 biomarker, no other significant differences between IRC and placebo treatment were reported
4 in that earlier RCT. Possible explanations for these divergent findings include fewer participants
5 (28 active, 34 placebo), more severe COVID-19, more rapid and proximal release of calcifediol,
6 and lower achieved mean (SD) serum 25D level (42.0±13.7 ng/mL). Release of calcifediol from
7 ERC is gradual, continues over a period of 12 hours (based on *in vitro* dissolution), and likely
8 occurs primarily in the colon.

9 The current study differed from previous evaluations of vitamin D supplementation in
10 COVID-19 patients in two ways. First, it targeted achievement of a high serum 25D exposure
11 (50-100 ng/mL) with downward dose adjustment, as needed. This approach was chosen in view
12 of the reported inverse relationship between baseline 25D and observed increase with vitamin
13 D supplementation²⁰ (a relationship that was not observed in this study), and the known
14 adverse impact of adipose tissue on 25D bioavailability that can be readily overcome with ERC,
15 but not with vitamin D supplements²¹. Prescription and non-prescription supplements of
16 cholecalciferol (vitamin D₃) and ergocalciferol (vitamin D₂) are fat-soluble, poorly absorbed in
17 the intestine, accumulate preferentially in adipose tissue^{22,23}, possess low affinities for the
18 serum vitamin D binding protein (DBP)²² and are poorly mobilized from adipose into circulation
19 for hepatic activation²⁴. Such supplements have multi-day delays in raising serum 25D²⁵, and
20 prove to be unreliable in raising serum 25D in overweight or obese patients who are at high risk
21 for COVID-19^{15,26}. Further, hepatic 25-hydroxylase activity is reduced in obesity, also blunting
22 the intended elevation of serum 25D²⁷. In contrast, calcifediol requires no hepatic activation²⁸,

1 is more water soluble²⁹ and avidly binds to DBP³⁰, reducing accumulation in adipose tissue³¹
2 and enabling ready availability to peripheral tissues, including virus-activated immune cells
3 containing CYP27B1. Second, consistent with the excellent safety profile established for ERC in
4 patients with stage 3-4 CKD¹³, the slow release formulation of ERC safely achieved high serum
5 25D exposures (50 to 100 ng/mL) that have been considered concerning for vitamin D
6 supplements¹¹.

7 **Strengths**

8 The strengths of this study are the randomized, double-blind, placebo-controlled design;
9 targeting, safely achieving and maintaining uncommonly high and sustained serum 25D levels
10 of ≥ 50 ng/mL; examination of a broad spectrum of symptoms commonly associated with
11 COVID-19; and in-depth monitoring of patient outcomes and safety via weekly in-person clinic
12 visits.

13 **Limitations**

14 The inability of this study to show more significant differences in time to resolution for
15 respiratory symptoms is likely due to inadequate power (small sample size); the modest
16 severity of COVID-19 in the enrolled subjects; the fact that 17% of subjects assigned to placebo
17 treatment had, unexpectedly, serum 25D levels above 50 ng/mL at baseline; dosing
18 noncompliance (four previous but unpublished pharmacokinetic studies of a single 900 mcg ERC
19 loading dose in healthy volunteers have shown that no subject failed to achieve an increase in
20 serum 25D of at least 6 ng/mL); and, varying periods of time between onset of symptoms and
21 diagnosis in of COVID-19 as well as between diagnosis and initiation of ERC treatment. The
22 observed positive effect of 25D elevation on resolution of COVID-19 respiratory symptoms is

1 based on a post-hoc analysis and needs to be confirmed in a larger study with an appropriate
2 prespecified endpoint.

3 **CONCLUSIONS**

4 ERC was effective in increasing serum total 25D to levels of at least 50 ng/mL in
5 outpatients with COVID-19 that may have accelerated resolution of respiratory symptoms,
6 suggesting mitigation of COVID-19 pneumonia risk. The positive findings from this RCT warrant
7 confirmation in additional larger studies.

8

1 **Article Information**

2 **Author Contributions:** Drs. Bishop, Ashfaq, Melnick, Ng and Choe had full access to data that
3 are currently available from the study and take responsibility for the integrity of the data and
4 the accuracy of the data analysis.

5 *Concept and design:* Drs. Bishop, Ashfaq, Melnick, Federman and Adams.

6 *Acquisition, analysis and interpretation:* All authors.

7 *Drafting of the manuscript:* All authors.

8 *Critical revision of the manuscript for important intellectual content:* All authors.

9 *Statistical analysis:* Drs. Bishop, Strugnell, Choe and Ng.

10 *Supervision:* Drs. Ashfaq and Melnick.

11 **Competing interests:** All authors have completed the ICMJE uniform disclosure form at

12 www.icmje.org/coi_disclosure.pdf and declare: funding support was received from OPKO

13 Health, Inc. (OPKO); Drs. Bishop, Ashfaq, Strugnell and Choe are employed by OPKO and have

14 received stock options; Drs. Melnick and Kalantar-Zadeh are OPKO consultants; Dr. Ng is an

15 employee of WuXi Clinical Trials engaged as a contractor for OPKO; Drs. Vazquez and Fialkow

16 are paid OPKO clinical investigators; no other relationships or activities that could appear to

17 have influenced the submitted work.

18 **Funding Support:** The study was funded by OPKO.

19 **Data Sharing Statement:** All top-line data produced in the present study are summarized in the

20 manuscript. Additional analyses are ongoing as further laboratory data become available.

REFERENCES

1. Kaufman HW, Niles JK, Kroll MH et al. SARS-CoV-2 positivity rates associated with circulating 25-hydroxyvitamin D levels. *Plos One* 2020;15(9):e0239252. doi: 10.1371/journal.pone.0239252.
2. Grant WB, Lahore H, McDonnell SL, et al. Evidence that vitamin D supplementation could reduce risk of Influenza and COVID-19 infections and deaths. *Nutrients* 2020;12(4):988. doi: 10.3390/nu12040988.
3. Jude EB, Ling SF, Allcock R, et al. Vitamin D deficiency is associated with higher hospitalization risk from COVID-19: a retrospective case-control study. *J Clin Endocrinol Metab* 2021;106(11):e4708-e4715. doi: 10.1210/clinem/dgab439.
4. Wang Z, Joshi A, Leopold K, et al. Association of vitamin D deficiency with COVID-19 infection severity: systematic review and meta-analysis. *Clin Endocrinol* 2021;10.1111/cen.14540. doi: 10.1111/cen.14540.
5. Chiu S-K, Tsai K-W, Wu C-C, et al. Putative role of vitamin D for COVID-19 vaccination. *Int J Mol Sci* 2021; 22(16):8988. doi: 10.3390/ijms22168988.
6. Bilezikian JP, Bikle D, Hewison M, et al. Mechanisms in endocrinology: vitamin D and COVID-19. *Eur J Endocrinol* 2020;183(5):R133-R147. doi: 10.1530/EJE-20-0665.
7. Martens P-J, Gysemans C, Verstuyf A et al. Vitamin D's effect on immune function. *Nutrients* 2020;12(5):1248. doi: 10.3390/nu12051248.
8. Ghelani D, Alesi S, Mousa A. Vitamin D and COVID-19: an overview of recent evidence. *Int J Mol Sci* 2021;22(19):10559. doi: 10.3390/ijms221910559.
9. Borsche L, Glauner B, von Mendel J. COVID-19 mortality risk correlates inversely with vitamin D₃ status, and a mortality rate close to zero could theoretically be achieved at 50 ng/mL 25(OH)D₃: results of a systematic review and meta-analysis. *Nutrients* 2021;13:3596. doi: 10.3390/nu13103596.
10. Murai IH, Fernandes AL, Sales LP, et al. Effect of a single high dose of vitamin D₃ on hospital length of stay in patients with moderate to severe COVID-19: a randomized clinical trial. *JAMA* 2021;doi: 10.3390/nu13103596
11. Institute of Medicine. 2011. Dietary reference intakes for calcium and vitamin D. Washington, DC: the *National Academies Press*. doi:10.17226/13050.
12. White JH. Emerging roles of vitamin D-induced antimicrobial peptides in antiviral innate immunity. *Nutrients* 2022;14:284. doi:10.3390/nu14020284.
13. Sprague SM, Crawford PW, Melnick JZ et al. Use of extended-release calcifediol to treat secondary hyperparathyroidism in stages 3 and 4 chronic kidney disease. *Am J Nephrol* 2016;44:316-325.
14. Powers JH, Guerrero ML, Leidy NK, et al. Development of the Flu-PRO: a patient-reported outcome (PRO) instrument to evaluate symptoms of influenza. *BMC Infect Dis* 2016;16:1. doi: 10.1186/s12879-015-1330-0.
15. Holick MF, Binkley NC, Bischoff-Ferrari HA, et al. Evaluation, treatment, and prevention of vitamin D deficiency: an Endocrine Society clinical practice guideline. *J Clin Endocrinol Metab* 2011;96:1911-30.
16. Grant WB. Vitamin D's role in reducing risk of SARS-CoV-2 and COVID-19 incidence, severity, and death. *Nutrients* 2022;14:183. doi:10.3390/nu14010183.
17. Gombart, AF, Saito T, Koeffler HP. Exaptation of an ancient Alu short interspersed element provides a highly conserved vitamin D-mediated innate immune response in humans and primates. *BMC Genomics* 2009;10:321. doi:10.1186/1471-2164-10-321.
18. Qin C, Zhou L, Hu Z, et al. Dysregulation of immune response in patients with coronavirus 2019 (COVID-19) in Wuhan, China. *Clin Infect Dis* 2020;71:762-768.
19. Maghbooli Z, Sahraian MA, Jamalimoghadamsiahkali S, et al. Treatment with 25-hydroxyvitamin D₃ (calcifediol) is associated with a reduction in the blood neutrophil-to-lymphocyte ratio marker of disease severity in hospitalized patients with COVID-19: a pilot multicenter, randomized, placebo-controlled, double-blinded clinical trial. *Endocr Pract* 2021;27:1242-1251.
20. Didriksen A, Grimnes G, Hutchinson MS, et al. The serum 25-hydroxyvitamin D response to vitamin D supplementation is related to genetic factors, BMI, and baseline levels. *Eu J Endocrinol* 2013;169:559-567.

21. Bishop CW, Strugnell SA, Csomor P, et al. Obesity: a key consideration in the management of secondary hyperparathyroidism. *Am J Nephrol* 2022 (submitted; pending acceptance)
22. Hengist A, Perkin O, Gonzelez JT, et al. Mobilizing vitamin D from adipose tissue: the potential impact of exercise. *Nutr Bull* 2019; doi: 111/nbu.12369.
23. Comozzi V, Frigo AC, Zaninotto M, et al. 25-Hydroxycholecalciferol response to single oral cholecalciferol loading in the normal weight, overweight and obese. *Osteoporosis Int* 2016;27:2593-2602.
24. Michaud J, Naud J, Ouimet D, et al. Reduced hepatic synthesis of calcidiol in uremia. *J Am Soc Nephrol* 2010;21:1488-1498.
25. Armas LAG, Hollis BW, Heaney RP. Vitamin D₂ is much less effective than vitamin D₃ in humans. *J Clin Endocrinol Metab* 2004;89:5387-91.
26. Ekwaru JP, Zwicker JD, Holick MF, et al. The importance of body weight for the dose response relationship of oral vitamin D supplementation and serum 25-hydroxyvitamin D in healthy volunteers. *Plos One* 2014;e111265.
27. Roizen JD, Long C, Casella A, et al. Obesity decreases hepatic 25-hydroxylase activity causing low serum 25-hydroxyvitamin D. *J Bone Miner Res* 2019;34:1068-1073.
28. Petkovich M, Bishop CW. Extended-Release calcifediol in renal disease. *Vitamin D, Volume 2, Health, Disease and Therapeutics, Fourth Edition* 2018;667-678.
29. Sitrin MD, Bengoa JM. Intestinal absorption of cholecalciferol and 25-hydroxycholecalciferol in chronic cholestatic liver disease. *Am J Clin Nutr* 1987;46:1011.
30. Bishop JE, Collins ED, Okamura WH, et al. Profile of ligand specificity of the vitamin D binding protein for 1- α ,25-dihydroxyvitamin D₃ and its analogs. *J Bone Miner Res* 1994;9:1277-88.
31. Didriksen A, Build A, Jakobsen, et al. Vitamin D₃ increase in abdominal subcutaneous fat tissue after supplementation with vitamin D₃. *Eur J Endocrinol* 2015;172:235-41.

FIGURE LEGENDS

Figure 1: Consort Diagram

Figure 2:

(Panel A): Mean (SE) Serum Total 25-hydroxyvitamin D by Study Day and Treatment Group (Per-protocol Population). Percentages at the base of each bar indicate the proportion of subjects achieving serum 25D levels of at least 50 ng/mL. Asterisks indicate significant differences between treatment groups ($p < 0.001$).

(Panel B): Mean (SE) Increases in Serum Total 25-hydroxyvitamin D with ERC Treatment by Study Day (Per-protocol Population). The horizontal dotted line indicates the mean increase for all treated subjects.

Figure 3:

(Panel A): Kaplan-Meier Curves Displaying the Time to Resolution of Five Aggregated Symptoms (Trouble Breathing, Chest Congestion, Dry or Hacking Cough, Body Aches or Pains, Chills or Shivering) by Treatment Group (Per-protocol Population). Active group: symptoms resolved in 61 subjects but not in 4 who were right-censored. Placebo group: symptoms resolved in 67 subjects but not in 2 who were right-censored. The difference between the plotted curves is not statistically significant.

(Panel B): Kaplan-Meier Curves Displaying the Time to Resolution of Chest Congestion in Subjects Achieving at both Days 7 and 14 Serum Total 25-Hydroxyvitamin D Levels of At Least 50 ng/mL Versus Less than 50 ng/mL (Per-protocol Population). High 25D group: symptoms resolved in 42 subjects but not in 8 who were right-censored. Low 25D group: symptoms resolved in 62 subjects but not in 3 who were right-censored. The difference between the plotted curves is not statistically significant. A total of 19 subjects did not have chest congestion at treatment initiation (Day 1) and were excluded from analysis.

(Panel C): Kaplan-Meier Curves Displaying the Time to Resolution of a Composite of Three Respiratory Symptoms (Trouble Breathing, Chest Congestion, Dry or Hacking Cough) in Subjects Achieving at both Days 7 and 14 Increases Versus No Increases in Serum Total 25-

Hydroxyvitamin D Levels (Per-protocol Population). Increase group: symptoms resolved in 66 subjects but not in 4 who were right-censored. No increase group: symptoms resolved in 49 subjects but not in 5 who were right-censored. The difference between the plotted curves is statistically significant ($P < 0.05$). A total of 10 subjects did not have a total score of >3 at treatment initiation (Day 1) and were excluded from analysis.

(Panel D): Kaplan-Meier Curves Displaying the Time to Resolution of Chest Congestion in Subjects Achieving at both Days 7 and 14 Increases Versus No Increases in Serum Total 25-Hydroxyvitamin D Levels (Per-protocol Population). Increase group: symptoms resolved in 56 subjects but not in 7 who were right-censored. No increase group: symptoms resolved in 48 subjects but not in 4 who were right-censored. The difference between the plotted curves is statistically significant ($P < 0.05$). A total of 19 subjects did not have chest congestion at treatment initiation (Day 1) and were excluded from analysis.

TABLES

Table 1: Baseline Characteristics of Per-protocol Subjects.

	ERC (n=65) n (%)	Placebo (n=69) n (%)
Age, mean (SD), y	42.1 (14.1)	43.8 (14.3)
Sex, No. (%)		
Men	27 (41.2)	28 (40.6)
Women	38 (58.8)	41 (59.4)
Race/Ethnicity No. (%)		
Black	7 (10.8)	3 (4.3)
Other	0	1 (1.4)
White	58 (89.2)	65 (94.2)
Hispanic	52 (80.0)	55 (79.7)
Body mass index, mean (SD)	28.6 (5.5)	30.0 (5.9)
Acute COVID-19 symptoms, No. (%)		
Trouble breathing	46 (70.8)	46 (66.7)
Chest congestion	49 (75.4)	59 (85.5)
Dry or hacking cough	57 (87.7)	57 (82.6)
Body aches and pains	63 (96.9)	68 (98.6)
Chills and shivering	52 (80.0)	52 (75.4)
Co-existing diseases, No. (%)		
Hypertension	13 (20.0)	16 (23.2)
Type 2 diabetes mellitus	3 (4.6)	4 (5.8)
Asthma	1 (1.5)	2 (2.9)
Chronic kidney disease	0	4 (5.8)
Rheumatologic Disease	3 (4.6)	2 (2.9)
Type 1 diabetes mellitus	1 (1.5)	0
COVID-19 Vaccination, No. (%)	3 (4.6)	1 (1.4)

Table 2: Changes in Clinical Chemistries From Baseline to Day 7 and Day 14 by Treatment Group.

Lab test Mean (SD)	Treatment	Baseline (Visit 1)	Day 7 (Visit 2)	Day 14 (Visit 3)
1,25-Dihydroxyvitamin D (pg/mL)	CTAP101	71.1 (29.6)	78.4 (34.7) *	74.8 (23.8)**
	Placebo	74.1 (25.0)	66.6 (20.5)	59.4 (21.7)
25-Hydroxyvitamin D (ng/mL)	CTAP101	37.7 (12.1)	81.8 (30.5)**	79.9 (32.6)**
	Placebo	37.1 (15.6)	34.8 (13.8)	36.4 (13.5)
Calcium Corrected (mg/dL)	CTAP101	8.81 (0.37)	9.03 (0.38)	8.99 (0.34)
	Placebo	8.74 (0.37)	8.90 (0.33)	9.01 (0.35)
Glomerular Filtration Rate (mL/min/1.73m ²)	CTAP101	98.0 (17.07)	99.1 (16.4)	98.2 (14.4)
	Placebo	99.2 (19.4)	100.5 (19.9)	101.3 (18.6)
LL37 (ng/mL)	CTAP101	1.61 (1.41)	1.67 (1.43)	1.76 (1.68)
	Placebo	1.66 (1.63)	1.69 (1.43)	1.63 (1.32)
Neutrophil/Lymphocyte ratio (%)	CTAP101	2.01 (1.24)	2.12 (1.05)	2.05 (1.00)
	Placebo	2.04 (1.07)	2.00 (1.06)	2.02 (0.73)
Parathyroid Hormone, Intact (pg/mL)	CTAP101	28.8 (14.7)	27.6 (15.9)	26.6 (11.5)
	Placebo	30.2 (13.0)	33.8 (15.1)	33.4 (14.6)
Phosphorus (mg/dL)	CTAP101	3.36 (0.49)	3.43 (0.61)	3.44 (0.54)
	Placebo	3.37 (0.65)	3.28 (0.52)	3.41 (0.61)

*Differences between treatment groups are significant: * P<0.05 or ** P<0.001*

Figure 1

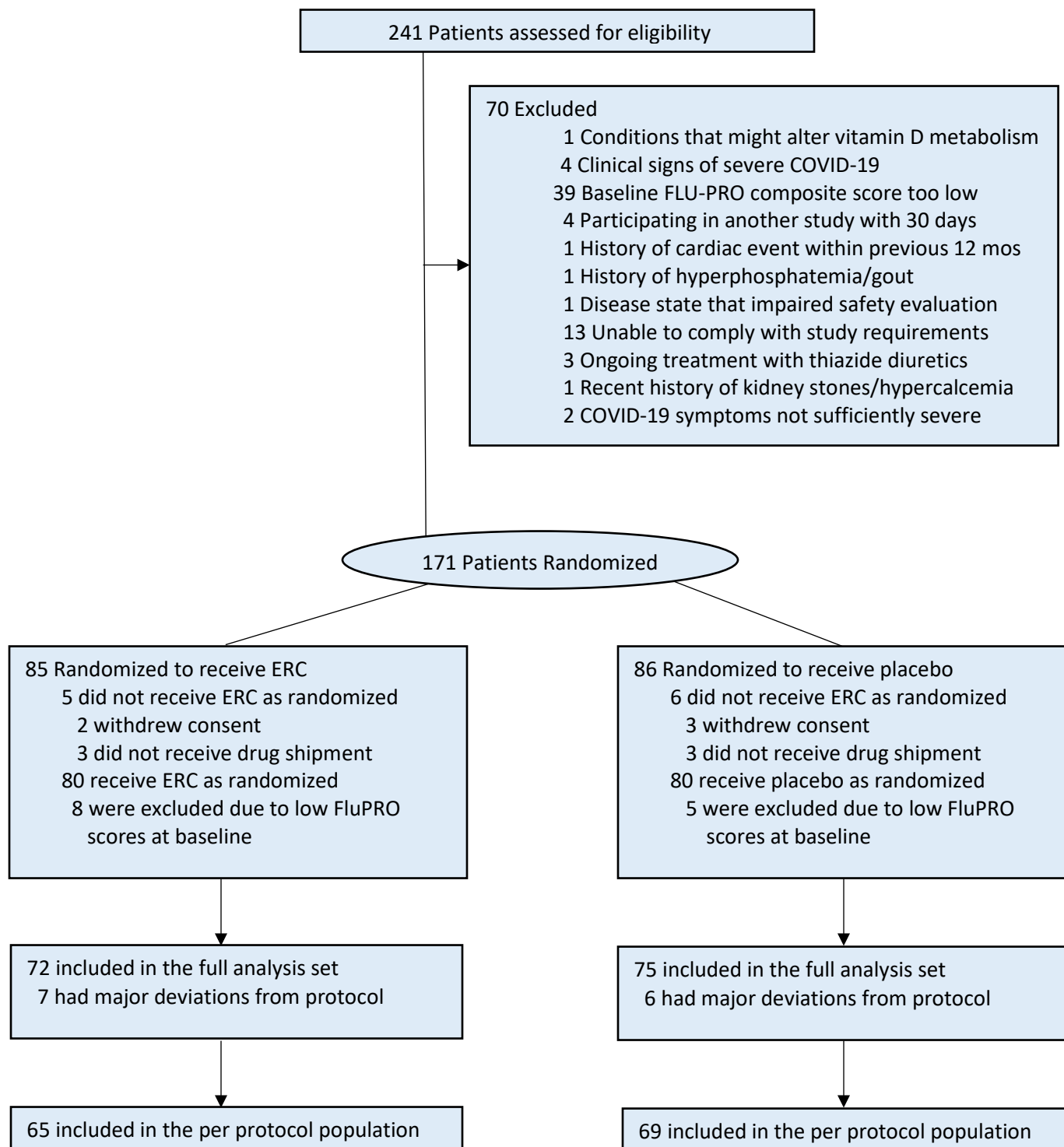
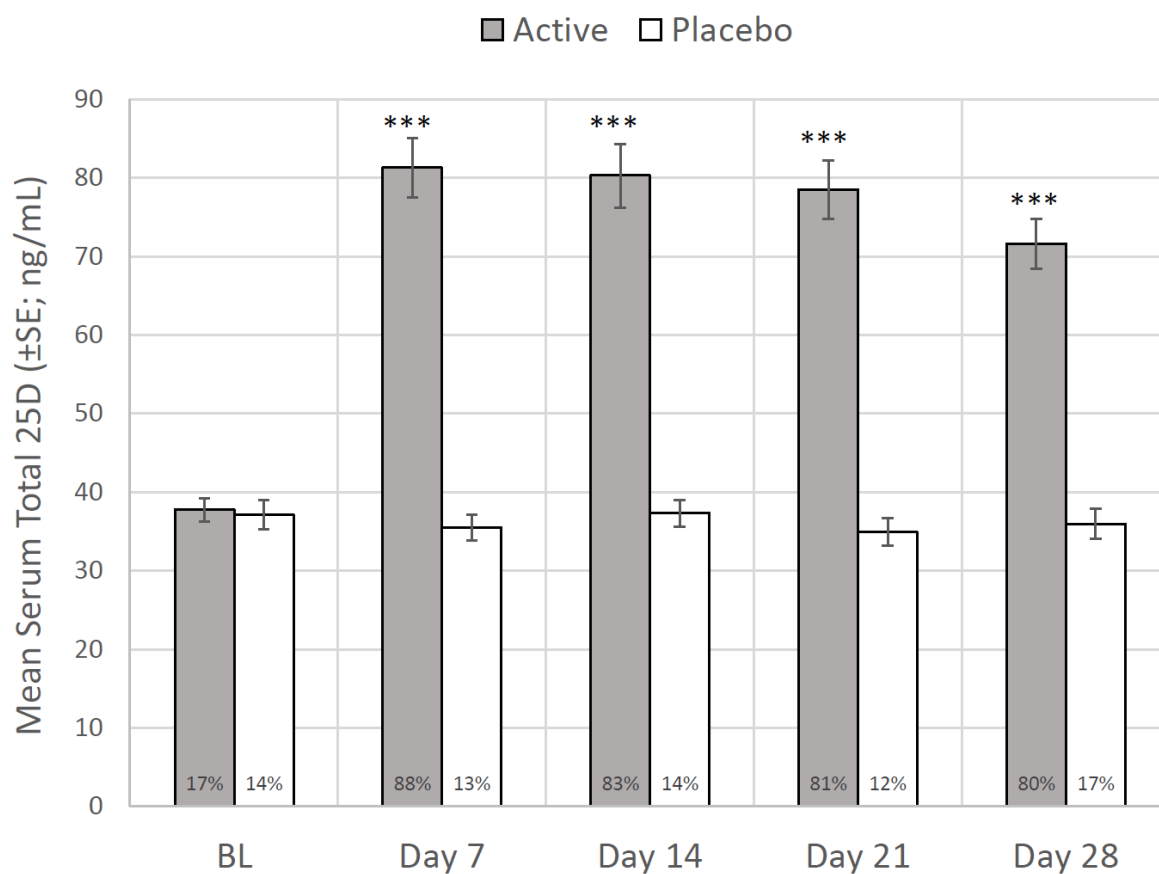


Figure 2A



***Significantly different from Placebo, $p < 0.001$

Figure 2B

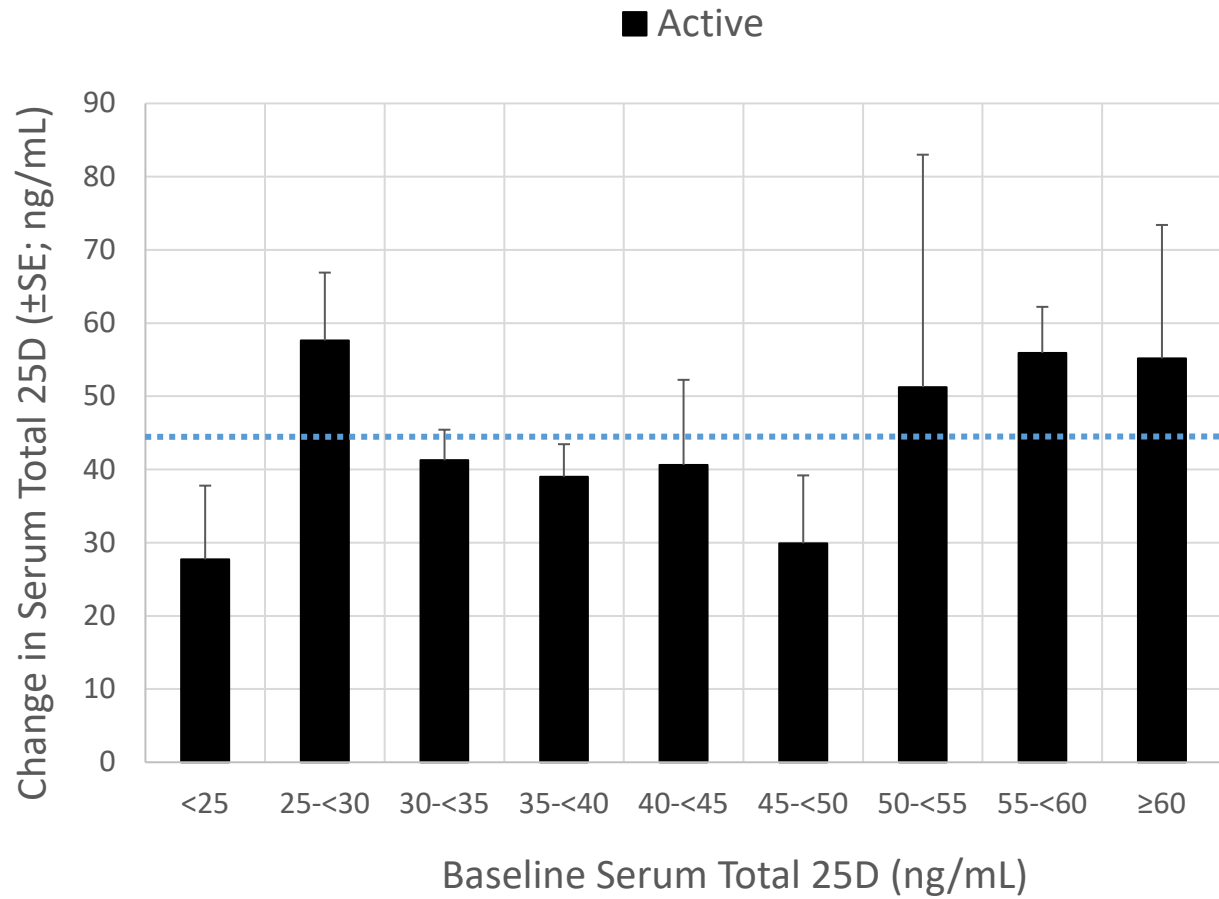


Figure 3A

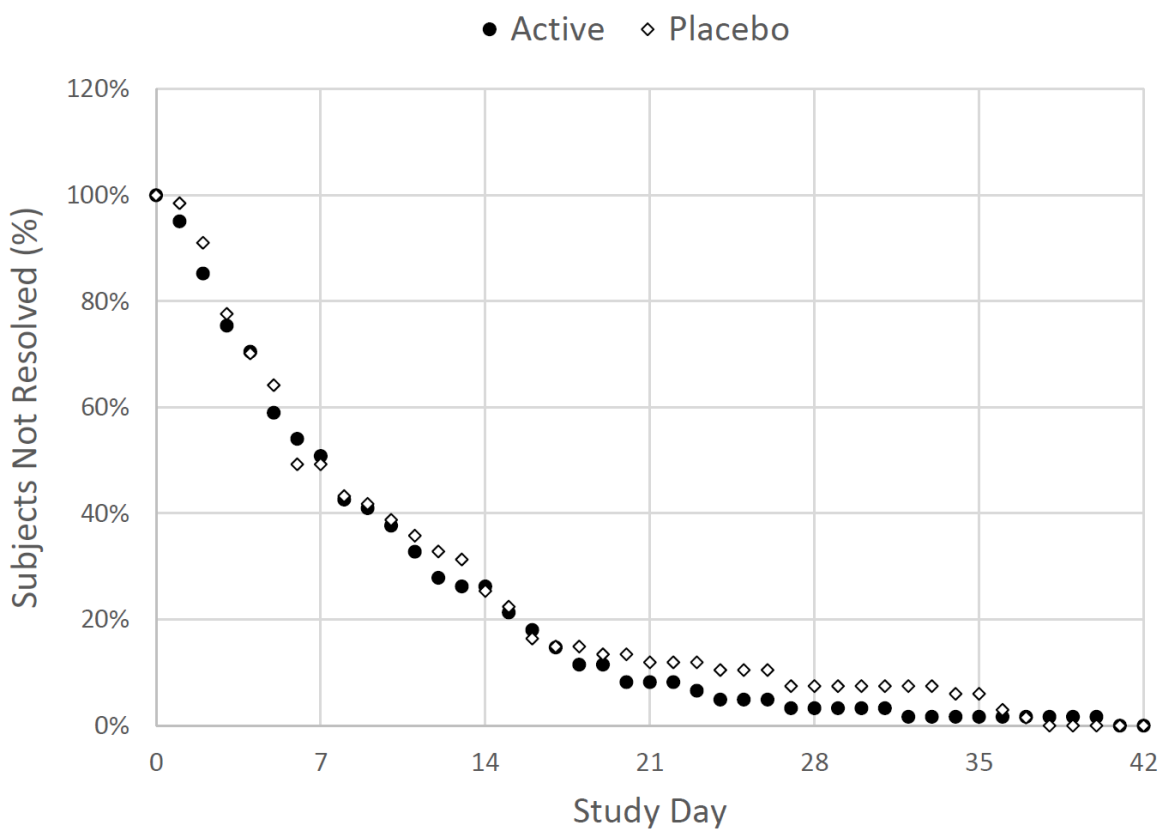


Figure 3B

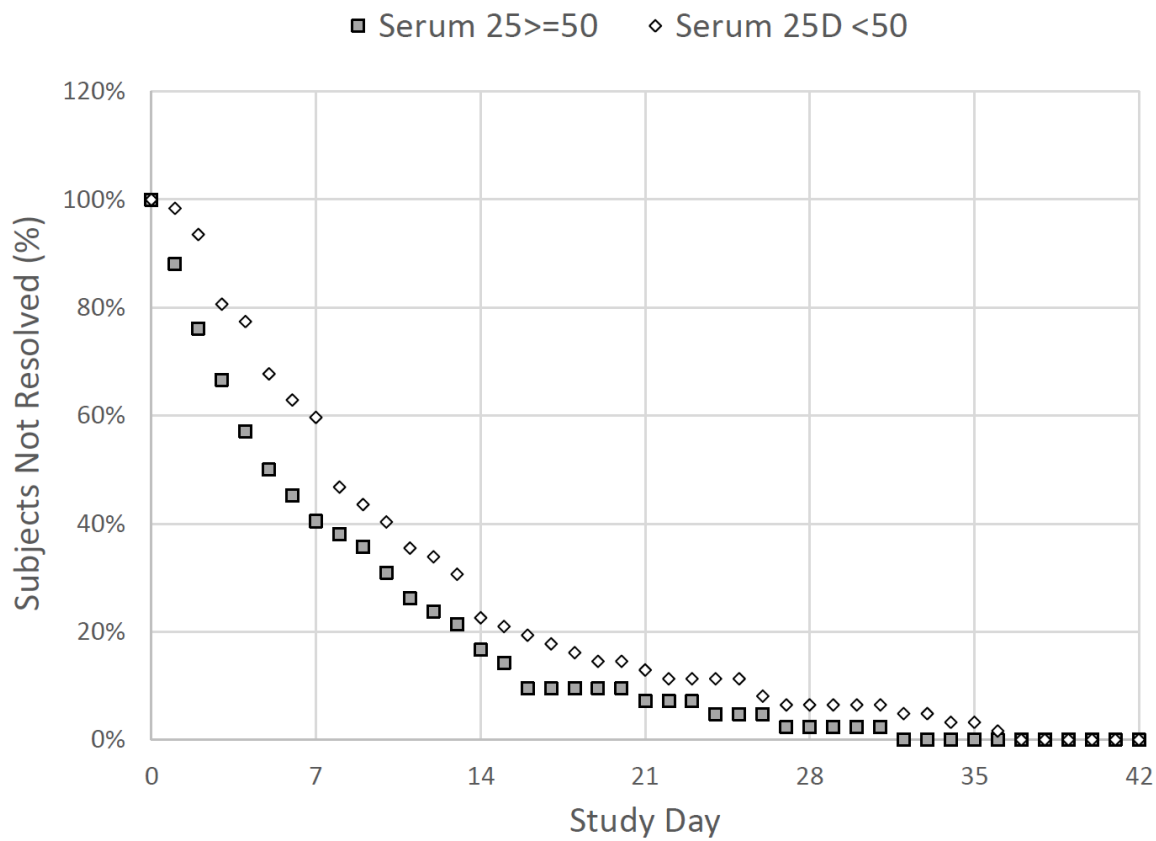


Figure 3C

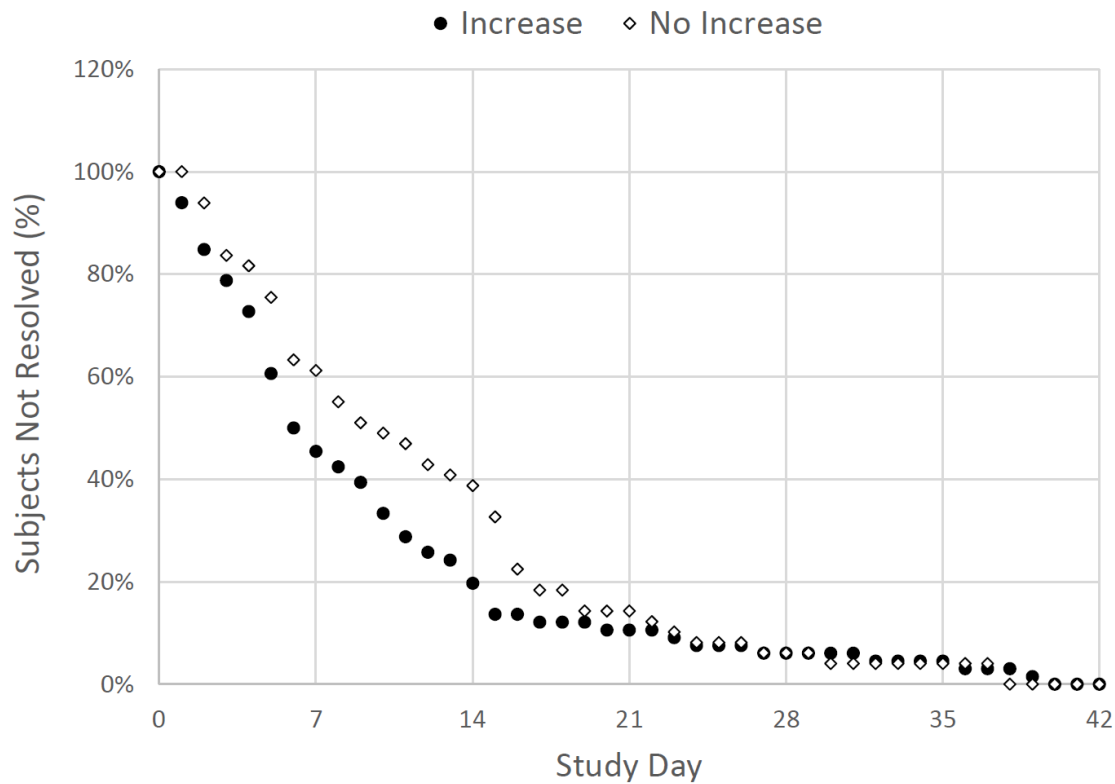


Figure 3D

